

Survivin Antibody



Orders ■ 877-616-CELL (2355)
orders@cellsignal.com
Support ■ 877-678-TECH (8324)
info@cellsignal.com
Web ■ www.cellsignal.com

rev. 12/30/15

For Research Use Only. Not For Use In Diagnostic Procedures.

Entrez-Gene ID # 332
Swiss-Prot Acc. #015392

Applications	Species Cross-Reactivity*	Molecular Wt.	Source
W, IP Endogenous	H	16 kDa	Rabbit**

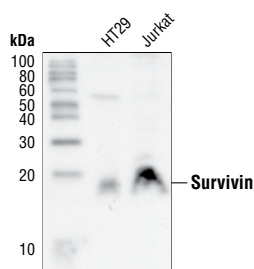
Background: Survivin is a 16 kDa anti-apoptotic protein highly expressed during fetal development and cancer cell malignancy (1). By binding and inhibiting caspase-3, survivin controls the checkpoint in the G2/M-phase of the cell cycle by inhibiting apoptosis and promoting cell division (2,3). This regulatory process requires the phosphorylation of survivin at Thr34 by p34 cdc2 kinase (4). Gene targeting using a Thr34 phosphorylation-defective survivin mutant, as well as antisense survivin, has been shown to inhibit tumor growth (5,6).

Specificity/Sensitivity: Survivin Antibody detects endogenous levels of total human survivin. The antibody does not cross-react with other types of apoptotic inhibitor proteins at physiological conditions.

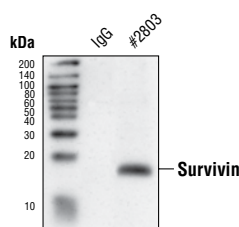
Source/Purification: Polyclonal antibodies are produced by immunizing animals with a synthetic peptide corresponding to residues near the carboxyl terminus of human survivin. Antibodies are purified by protein A and peptide affinity chromatography.

Background References:

- (1) Reed, J.C. and Reed, S.I. (1999) *Nature Cell Biol.* 1, 199–200.
- (2) Li, F. et al. (1998) *Nature* 396, 580–584.
- (3) Li, F. et al. (1999) *Nature Cell Biol.* 1, 461–466.
- (4) O'Connor, D.S. et al. (2000) *Proc. Natl. Acad. Sci. USA* 97, 13103–13107.
- (5) Olie, R.A. et al. (2000) *Cancer Res.* 60, 2805–2809.
- (6) Grossman, D. et al. (2001) *Proc. Natl. Acad. Sci. USA* 98, 635–640.



Western blot analysis of extracts from HT29 and Jurkat cells, using Survivin Antibody.



Immunoprecipitation of lysates from Jurkat cells using either control rabbit IgG or Survivin Antibody and then probed by Western blot, using Survivin (6E4) Mouse mAb #2802.

Storage: Supplied in 10 mM sodium HEPES (pH 7.5), 150 mM NaCl, 100 µg/ml BSA and 50% glycerol. Store at -20°C. Do not aliquot the antibody.

***Species cross-reactivity is determined by western blot.**

****Anti-rabbit secondary antibodies must be used to detect this antibody.**

Recommended Antibody Dilutions:

Western blotting 1:1000
Immunoprecipitation 1:100

For application specific protocols please see the web page for this product at www.cellsignal.com.

Please visit www.cellsignal.com for a complete listing of recommended companion products.

IMPORTANT: For western blots, incubate membrane with diluted antibody in 5% w/v BSA, 1X TBS, 0.1% Tween-20 at 4°C with gentle shaking, overnight.

Applications Key: W—Western IP—Immunoprecipitation IHC—Immunohistochemistry ChIP—Chromatin Immunoprecipitation IF—Immunofluorescence F—Flow cytometry E-P—ELISA-Peptide
Species Cross-Reactivity Key: H—human M—mouse R—rat Hm—hamster Mk—monkey Mi—mink C—chicken Dm—D. melanogaster X—Xenopus Z—zebrafish B—bovine
Dg—dog Pg—pig Sc—S. cerevisiae Ce—C. elegans Hr—Horse All—all species expected Species enclosed in parentheses are predicted to react based on 100% homology.