

GSK-3 β -Tag Antibody



Orders ■ 877-616-CELL (2355)
orders@cellsignal.com

Support ■ 877-678-TECH (8324)
info@cellsignal.com

Web ■ www.cellsignal.com

rev. 04/18/16

For Research Use Only. Not For Use In Diagnostic Procedures.

| Applications | Species Cross-Reactivity* | Molecular Wt. | Source |
|-----------------|---------------------------|---------------|----------|
| W Endogenous | All | n/a | Rabbit** |

Background: Epitope tags are useful for the labeling and detection of proteins using immunoblotting, immunoprecipitation and immunostaining techniques. Due to their small size, they are unlikely to affect the tagged protein's biochemical properties.

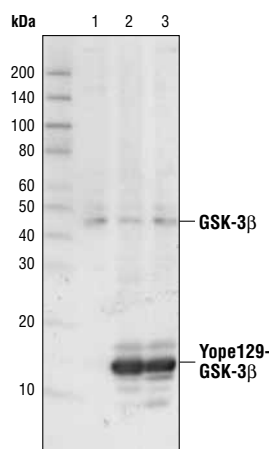
Short phosphorylatable peptide tags, such as the GSK-3 β -tag, can be used to determine translocation of effector proteins in type III secretion systems (1).

Specificity/Sensitivity: GSK-3 β -Tag Antibody is optimized to detect transfected levels of GSK-3 β -tagged proteins and weakly detects endogenous GSK-3 β (46 kDa)

Source/Purification: Polyclonal antibodies are produced by immunizing animals with a synthetic GSK-3 β -Tag peptide. Antibodies are purified by protein A and peptide affinity chromatography.

Background References:

- (1) Hohlfeld, S. et al. (2006) *Mol. Microbiol.* 59, 1624–1637.



Western blot analysis of extracts from HeLa cells, control (lane 1) or infected with YopE129-GSK-3 β (lane 2 and 3), using GSK-3 β -Tag Antibody (lysates kindly provided by Dr. Gregory Plano, University of Miami).

Entrez-Gene ID #2932
Swiss-Prot Acc. #P49841

Storage: Supplied in 10 mM sodium HEPES (pH 7.5), 150 mM NaCl, 100 μ g/ml BSA and 50% glycerol. Store at -20°C. Do not aliquot the antibody.

***Species cross-reactivity is determined by western blot.**

****Anti-rabbit secondary antibodies must be used to detect this antibody.**

Recommended Antibody Dilutions:

Western blotting 1:1000

For application specific protocols please see the web page for this product at www.cellsignal.com.

Please visit www.cellsignal.com for a complete listing of recommended companion products.

IMPORTANT: For western blots, incubate membrane with diluted antibody in 5% w/v BSA, 1X TBS, 0.1% Tween-20 at 4°C with gentle shaking, overnight.

Applications Key: W—Western IP—Immunoprecipitation IHC—Immunohistochemistry ChIP—Chromatin Immunoprecipitation IF—Immunofluorescence F—Flow cytometry E-P—ELISA-Peptide

Species Cross-Reactivity Key: H—human M—mouse R—rat Hm—hamster Mk—monkey Mi—mink C—chicken Dm—D. melanogaster X—Xenopus Z—zebrafish B—bovine

Dg—dog Pg—pig Sc—S. cerevisiae Ce—C. elegans Hr—horse All—all species expected Species enclosed in parentheses are predicted to react based on 100% homology.