

# Cytochrome c Antibody



**Orders** ■ 877-616-CELL (2355)  
orders@cellsignal.com  
**Support** ■ 877-678-TECH (8324)  
info@cellsignal.com  
**Web** ■ www.cellsignal.com

rev. 01/20/16

**For Research Use Only. Not For Use In Diagnostic Procedures.**

Applications	Species Cross-Reactivity*	Molecular Wt.	Source
W, IHC-P Endogenous	H, M, R, Mk, Dm, (B)	14 kDa	Rabbit**

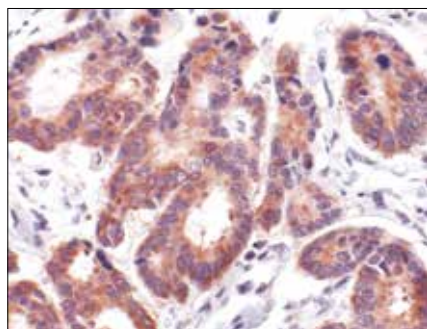
**Background:** Cytochrome c is a well conserved electron-transport protein and is part of the respiratory chain localized to mitochondrial intermembrane space (1). Upon apoptotic stimulation, cytochrome c released from mitochondria associates with procaspase-9 (47 kDa)/Apaf 1. This complex processes caspase-9 from inactive proenzyme to its active form (2). This event further triggers caspase-3 activation and eventually leads to apoptosis (3).

**Specificity/Sensitivity:** Cytochrome c Antibody detects endogenous levels of cytochrome c protein.

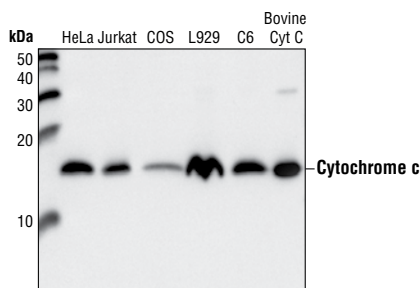
**Source/Purification:** Polyclonal antibodies are produced by immunizing animals with a synthetic peptide corresponding to residues surrounding Pro72 of human cytochrome c. Antibodies are purified by protein A and peptide affinity chromatography.

## Background References:

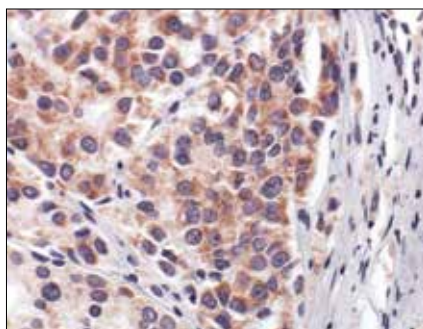
- (1) Schagger H.H. et al. (2002) *Biochem. Biophys. Acta*. 1555, 154–159.
- (2) Li, P. et al. (1997) *Cell* 91, 479–489
- (3) Liu, X. et al. (1996) *Cell* 86, 147–157.



Immunohistochemical analysis of paraffin-embedded human colon carcinoma, using Cytochrome c Antibody.



Western analysis of cell extracts from human (HeLa and Jurkat), monkey (COS), mouse (L929), rat (C6) and purified bovine cytochrome c, using Cytochrome c Antibody.



Immunohistochemical analysis of paraffin-embedded human prostate carcinoma, using Cytochrome c Antibody.

Entrez-Gene ID # 54205  
UniProt ID # P99999

**Storage:** Supplied in 10 mM sodium HEPES (pH 7.5), 150 mM NaCl, 100 µg/ml BSA and 50% glycerol. Store at -20°C. Do not aliquot the antibody.

**\*Species cross-reactivity is determined by western blot.**

**\*\*Anti-rabbit secondary antibodies must be used to detect this antibody.**

## Recommended Antibody Dilutions:

Western blotting 1:1000  
Immunohistochemistry (Paraffin) 1:200†

Unmasking buffer: Citrate

Antibody diluent: SignalStain® Antibody Diluent #8112

Detection reagent: SignalStain® Boost (HRP, Rabbit) #8114

†Optimal IHC dilutions determined using SignalStain® Boost IHC Detection Reagent.

**For product specific protocols and a complete listing of recommended companion products please see the product web page at [www.cellsignal.com](http://www.cellsignal.com)**

**IMPORTANT:** For western blots, incubate membrane with diluted antibody in 5% w/v nonfat dry milk, 1X TBS, 0.1% Tween®20 at 4°C with gentle shaking, overnight.

Tween is a registered trademark of ICI Americas, Inc.

**Applications Key:** W—Western IP—Immunoprecipitation IHC—Immunohistochemistry ChIP—Chromatin Immunoprecipitation IF—Immunofluorescence F—Flow cytometry E-P—ELISA-Peptide  
**Species Cross-Reactivity Key:** H—human M—mouse R—rat Hm—hamster Mk—monkey Mi—mink C—chicken Dm—D. melanogaster X—Xenopus Z—zebrafish B—bovine  
Dg—dog Pg—pig Sc—S. cerevisiae Ce—C. elegans Hr—Horse All—all species expected Species enclosed in parentheses are predicted to react based on 100% homology.