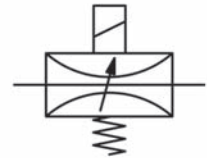
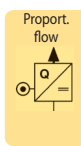


Description	The miniature flow valve is highly reliable and combines precise control of flow rate with compact design and only 80 g weight. It can be used for vacuum or pressure up to 12 bar. Plug amplifier required.		
Media	50 µm filtered compressed air, vacuum or non-corrosive gases		
Plug amplifier	Conversion of the analogue signal into a pulse-wide modulated current.		
Power consumption	Supply voltage: 24 V DC, max. 1.1 A	Adjustment:	zero point and range
Electrical connector	Switchable signal: 0...10 V, 0...20 mA, 4...20 mA	Time ramp:	0.1 to 3 s selectable
Operating pressure	Close function: < 2% of max. signal	Hum frequency:	40 to 700 Hz selectable
Repeatability	< 3% FS	Life cycle	> 100 million cycles
Response sensitivity	< 2% FS	Linearity	< 8% FS
Polarity	any for valve	Hysteresis	< 5% FS
Mounting position	any	Protection class	IP 65 with coupling socket
Material	Body: brass	Temperature range	0 °C to 60 °C / 32 °F to 140 °F
	Inner valve: stainless steel and brass	Elastomer: NBR/Buna	
		Manifold: brass (M5), zinc die-cast (G1/8), polyamide (Ø4)	



**DN 0.8 to 2.0
compressed air or gases**



Description	Dimensions			K _v value (m ³ /h)	Flow rate l/min*1	Operating pressure max. bar	Nominal size DN	Order number
	A	B	C					

Proportional flow valve								PV212	
flangeable, w/o manifold block, with coupling socket, for compressed air, 24 V DC, direct control, w/o amplifier									
NC		15	48	53	0.01	0...11	12	0.8	PV212-008
					0.02	0...22	7	1.2	PV212-012
					0.025	0...22	4	1.6	PV212-016
					0.045	0...28	2.5	2.0	PV212-020



PV212

Special options, add the appropriate letter

12 V DC supply voltage PV212-0...V

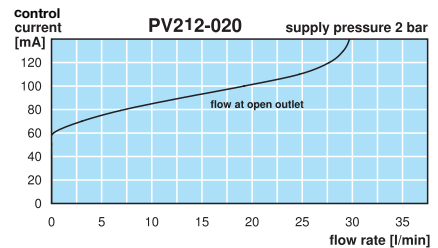
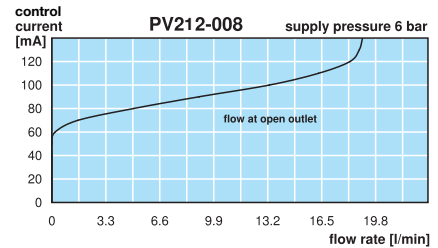
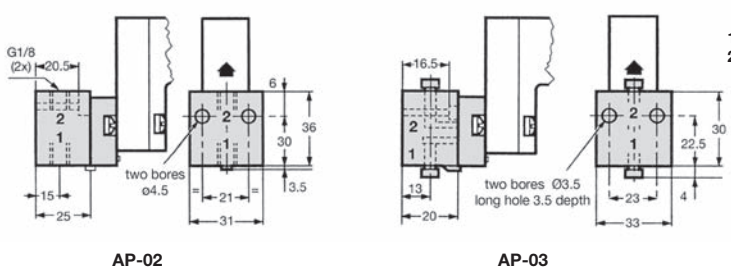
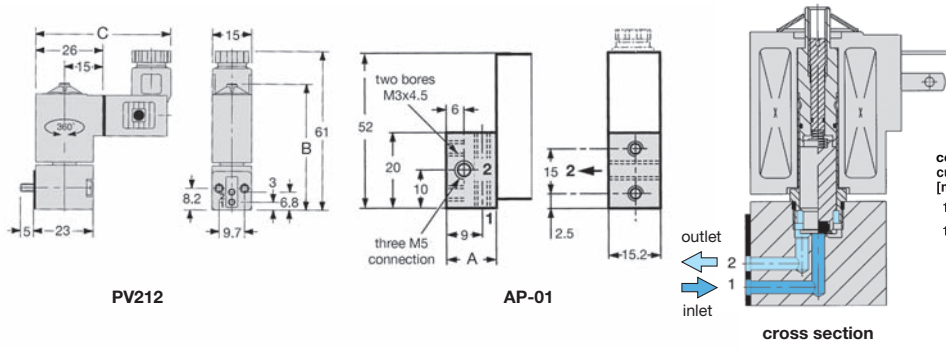


PV212
accessory: manifold block M5

Accessories, enclosed			
plug amplifier	24 V DC, switchable 0...10 V, 0...20 mA, 4...20 mA		PVY-05
manifold block	M5		AP-01
	G1/8		AP-02
	Ø4		AP-03
in-line manifold	Ø4		AP-04
	G1/8		AP-05



PVY-05



*1 at supply pressure 6 bar for DN 0.8 and DN 1.2, 4 bar for DN 1.6, 2 bar for DN 2.0 and Δp = 1 bar



Order example:
PV212-008
China website: www.duray-control.cn