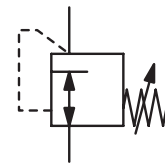


Low Pressure Regulator from 20 mbar, also for Oil

R02/RL14

Description	Hand-operated, spring-loaded low pressure regulator with diaphragm and integrated safety valve, thus not suitable for gas pressure regulation in closed rooms.		
Media	compressed air, propane, butane or other non-corrosive gases as well as oil		
Supply pressure Accuracy	max. 16 bar at R02-5/-6,	max. 10 bar at R02-2/-3/-4 and RL14-5,	max. 6 bar at RL14-0
Air consumption	at min. supply pressure and flow: < 5% FS pressure deviation		
Mounting position	at max. supply pressure and flow: < 15% FS pressure deviation		
Adjustment	at max. supply pressure without flow: < 25% FS pressure deviation without constant bleed		
Relieving function	any		
Gauge port	RL14-0: no individual settings		
Temperature range	R02-5/-6: by adjusting knob and dial enabling eleven settings for different outlet pressures		
Material	R02-2/-3/-4: by T-handle with locknut	non-relieving	
	G $\frac{1}{4}$ on one side of the body, except on R02-5/-6 and RL14-0		
	-20 °C to 60 °C / -4 °F to 140 °F		
	Body: zinc die-cast	Elastomer: NBR/Buna-N	Inner valve: brass



G $\frac{1}{4}$ up to G $\frac{3}{4}$
25 ... 50 / 1400 mbar

Dimensions			Flow rate	Supply pressure recommended	Connection thread	Pressure range	Order number
A	B	ØT					

Low pressure regulator							supply pressure max. 16 bar, non-relieving, without gauge port	R02-5/-6
100	68	68	13	2.5	G $\frac{1}{4}$	25... 50	R02-524-00	
100	68	68	7	6.0	G $\frac{1}{4}$	20... 200	R02-524-05	
100	68	68	26	6.0	G $\frac{1}{4}$	70... 200	R02-522-01	
100	68	68	50	2.5	G $\frac{1}{4}$	30... 200	R02-524-06	
100	68	68	7	2.5	G $\frac{1}{4}$	20... 1400	R02-524-08	
103	50	83	40	6.0	G $\frac{3}{8}$ *1	350... 1400	R02-626	
103	50	83	140	6.0	G $\frac{3}{8}$ *1	350... 1400	R02-627	



R02-524-00

Low pressure regulator							supply pressure max. 10 bar, non-relieving	R02-2/-3/-4
138	127	117	140	2.5	G $\frac{1}{2}$	20... 150	R02-411-01	
138	127	117	140	2.5	G $\frac{1}{2}$	50... 500	R02-211	
160	136	145	280	2.5	G $\frac{3}{4}$ *2	50... 500	R02-321	



R02-627

Oil pressure regulator							supply pressure max. 6/10 bar, non-relieving	RL14
65	32	59	0.3	max. 6	G $\frac{1}{4}$	preset 100	RL14-001	
65	70	68	3.0	max. 10	G $\frac{3}{8}$ *1	0... 2500	RL14-504	



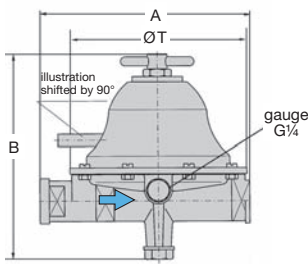
R02-411-01
accessory: gauge

Accessories, enclosed

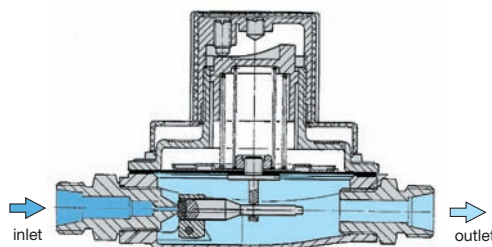
pressure gauge	Ø 50 mm, 0... 4 bar,	G $\frac{1}{4}$, Bourdon tube	for RL14-504	MA5002-04
	Ø 63 mm, 0... 250 mbar,	G $\frac{1}{4}$, capsule type	for R02-411-01	MA6302-C3
	Ø 63 mm, 0... 0.6 bar,	G $\frac{1}{4}$, Bourdon tube	for R02-2/-3	MA6302-C6



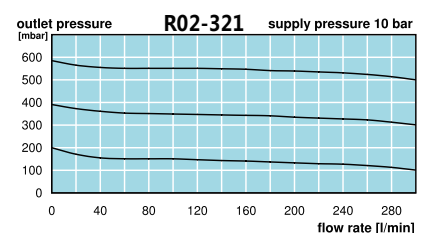
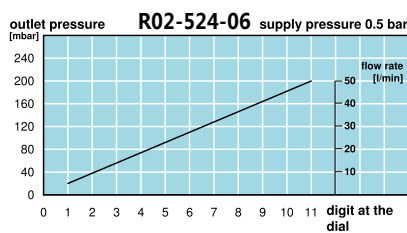
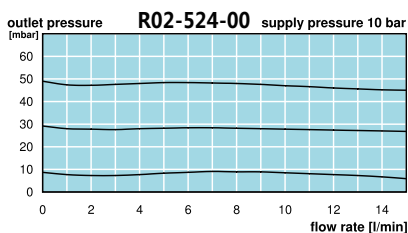
RL14-504
accessory: gauge



R02-211 / -321 / -411



cross section



*1 G $\frac{1}{4}$ on the input side *2 G $\frac{1}{2}$ on the input side



Order example
R02-524-00

China website: www.duray-control.cn