

Modular Miniature Pressure Regulator

R M 6 / R M P / M5000



Description

Pressure regulator RM6 Design as R7 but for bottom-sided flange assembly via fittings and o-rings made of NBR/Buna-N. Mounting through four screws (M3) with extremely small screw heads.

Pressure regulator RMP This model guards against unauthorised tampering of pressure. Alternatively available with preset pressure. The pressure is to be set between 30 mbar and 2.8 bar. Its headroom is reduced to 49 mm.

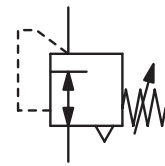
Diverter block M5000 M3000 features four ports sideways and one on top. All ports can be provided with threads or blank slides, the ports sideways optionally with connector slides.

Top cover • blank cover (B) • with G $\frac{1}{8}$ thread (1) • with G $\frac{1}{4}$ thread (2) • with M5 thread (10-32 UNF)

Connector slide Assembly to join two units • without through hole (C) • with through hole (U)

Temperature range 4 °C to 70 °C / 39.2 °F to 158 °F

Material Body: glass fiber-reinforced Celcon Inner valve: stainless steel and Celcon
Elastomer: NBR/Buna-N



M5, G $\frac{1}{8}$, G $\frac{1}{4}$ or quick connector

Dimensions			Flow rate l/min*1	Supply pressure max. bar	Connection thread G/flange	Pressure range bar	Order number
A	B	C					

Precision regulator with flange					with adjusting knob, relieving, gauge port G $\frac{1}{8}$ on one side		RM6
47	92	-	140	10	flange	0.01 ... 0.7	RM6-010-B1BB
						0.02 ... 2.1	RM6-030-B1BB
						0.03 ... 4.1	RM6-060-B1BB
						0.03 ... 7.0	RM6-100-B1BB



RM6

RM6

Regulator with adjustment lock					adjustment with socket wrench, relieving, gauge port G $\frac{1}{8}$ on one side		RMP
47	49	14	140	10	G $\frac{1}{8}$	0.03 ... 2.8	RMP7 -...-111B
32	49	-			flange	0.03 ... 2.8	RMP6 -...-B1BB



RMP7

for socket wrench

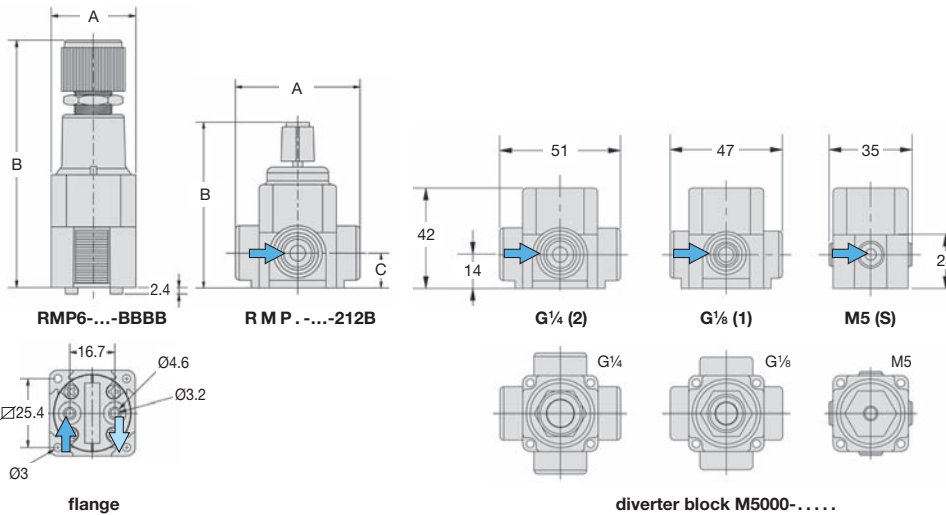
RMP6

with flange

Diverter block G $\frac{1}{8}$				e.g. all ports G $\frac{1}{8}$		M5000
47	42	14	without filter	-	G $\frac{1}{8}$	M5000-11111
			with filter, 380 μ m		connection	M5001-11111

Special options and accessories

see adjoining page



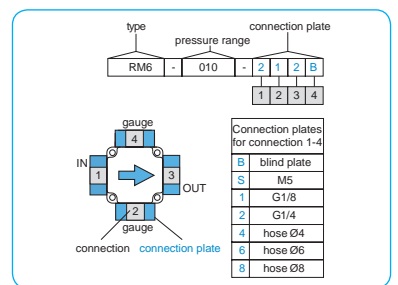
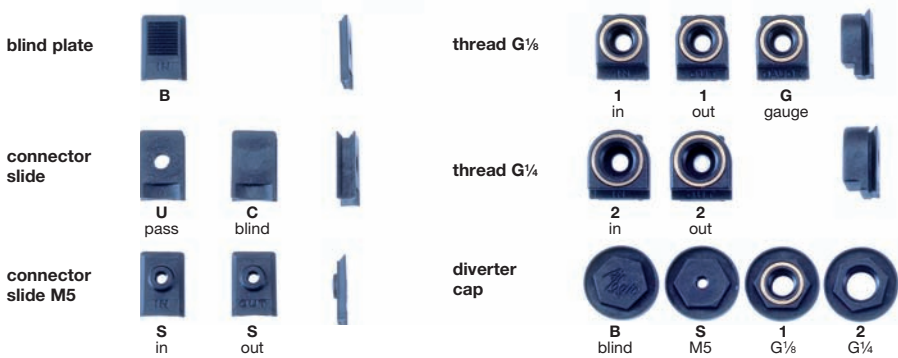
M5000-SBSBS

M5000-1S1SB



M5000-11111, G $\frac{1}{8}$

M5000-22222, G $\frac{1}{4}$



connector slides configuration

*1 at 7 bar supply pressure, 6 bar outlet pressure and 1 bar pressure drop



Order example:
RM6-010-B1BB
China website: www.duray-control.cn