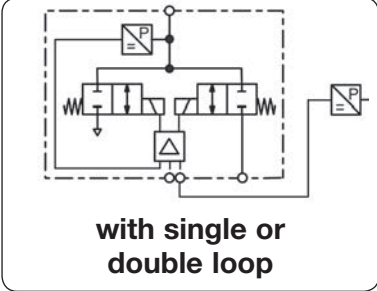


|                               |   |  |
|-------------------------------|---|--|
| <b>Description</b>            | Proportional control valve with closed loop control technology for better control of pressurised gases. The instrument can be built as single closed loop or dual closed loop control valve. dry, lubricated or unlubricated and 5 µm filtered compressed air or non-corrosive gases constant outlet pressure at voltage drop |  |
| <b>Media</b>                  | 0 ... 10 V, impedance 4.7 kΩ, ratio of internal to external relationship is 10% to 90%  |  |
| <b>Fail freeze</b>            | 15 ... 24 V DC, residual ripple < 10%, with reverse voltage protection  |  |
| <b>Second loop</b>            | 0 ... 10 V / 4.7 kΩ, 4 ... 20 mA / 100 Ω, jumper selectable command   |  |
| <b>Supply voltage</b>         | 0 ... 10 V at max. 10 mA  |  |
| <b>Impedance</b>              | terminal strip for 2.5 mm <sup>2</sup>  |  |
| <b>Monitor signal</b>         | 3.6 W regulating, 0.5 W non-regulating  |  |
| <b>Electrical ports</b>       | < 0.15% FS  |  |
| <b>Power consumption</b>      | < 1% FS at 0 °C to 50 °C / 32 °F to 122 °F  |  |
| <b>Linearity / Hysteresis</b> | 0 °C to 70 °C / 32 °F to 158 °F   |  |
| <b>Temperature influence</b>  | Ports: brass  |  |
| <b>Temperature range</b>      | Transducer: aluminium and silicon   |  |
| <b>Material</b>               | <b>Air consumption</b>  | without constant bleed < 0.02 FS             |
|                               | <b>Repeatability</b>  | zero point and span any, vibration-resistant |
|                               | <b>Adjustment</b>   | FKM  |
|                               | <b>Mounting position</b>  | nickel-plated brass                          |
|                               |   | Valves:                                      |



| Dimensions |    |    | Flow rate | Supply pressure | Accuracy | Connection thread | Pressure range | Order number |
|------------|----|----|-----------|-----------------|----------|-------------------|----------------|--------------|
| A          | B  | C  | l/min*1   | max. mbar/bar*2 | %        | G                 | mbar/bar       |              |
| mm         | mm | mm |           |                 |          |                   |                |              |

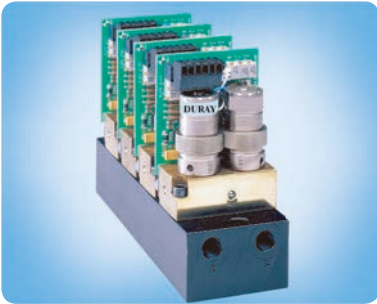
| Prop. pressure regulator  |    |    |    |           |     |                               |                | PM       |
|---|----|----|----|-----------|-----|-------------------------------|----------------|----------|
| 0 ... 10 V input and monitor signal, supply voltage 24 V DC, fail freeze, single loop, for DIN rail |    |    |    |           |     |                               |                |          |
| 56  | 78 | 54 | 35 | 20 mbar   | 5   | G <sup>1</sup> / <sub>8</sub> | 0 ... 10 mbar  | PM1DE-B1 |
|   |    |    |    | 200 mbar  | 0.8 |                               | 0 ... 100 mbar | PM1DE-C1 |
|   |    |    |    | 1000 mbar | 0.2 |                               | 0 ... 600 mbar | PM1DE-C6 |
| 56  | 78 | 54 | 35 | 2 bar     | 0.2 | G <sup>1</sup> / <sub>8</sub> | 0 ... 1 bar    | PM1DE-01 |
|   |    |    |    | 2 bar     |     |                               | 0 ... 2 bar    | PM1DE-02 |
|   |    |    |    | 3 bar     |     |                               | 0 ... 4 bar    | PM1DE-04 |
|   |    |    |    | 9 bar     |     |                               | 0 ... 6 bar    | PM1DE-06 |
|   |    |    |    | 9 bar     |     |                               | 0 ... 10 bar   | PM1DE-10 |
|   |    |    |    | 15 bar    |     |                               | 0 ... 16 bar   | PM1DE-16 |
|   |    |    |    | 24 bar    |     |                               | 0 ... 20 bar   | PM1DE-20 |
| 56  | 78 | 54 | 35 | 2 bar     | 0.2 | G <sup>1</sup> / <sub>8</sub> | 0 ... -1 bar   | PM1DE-V0 |
|   |    |    |    | 2 bar     |     |                               | -1 ... +1 bar  | PM1DE-V1 |



PM . D  
DIN rail mounting



PM . P  
panel mounting



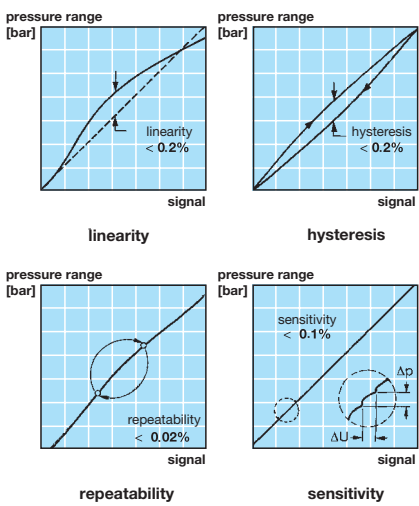
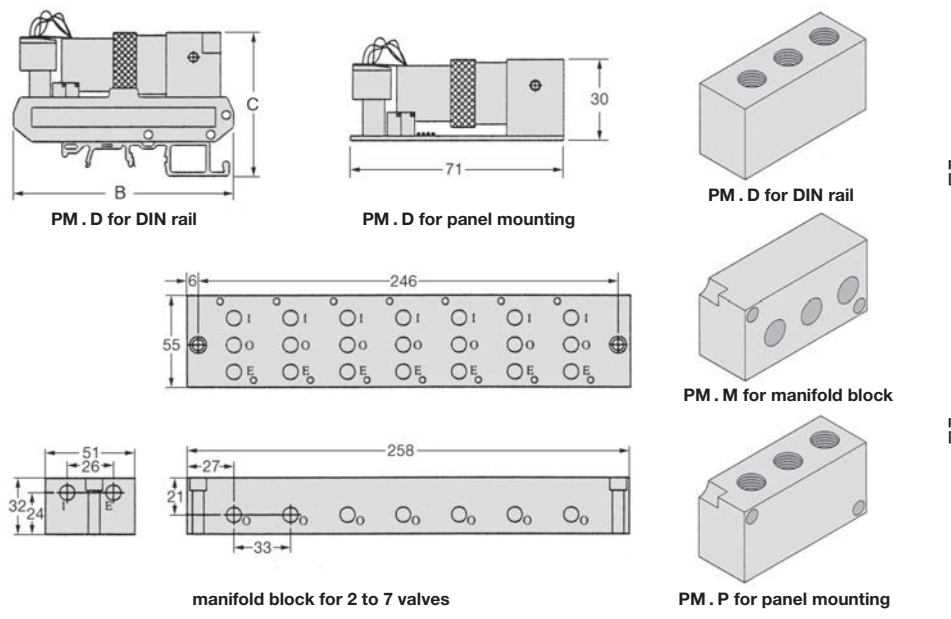
PM . M  
mounting on manifold block

### Special options, add the appropriate letter

|                               |  |               |
|-------------------------------|--|---------------|
| <b>double loop</b>            | second loop feedback 0 ... 10 V          | PM2 . . . .   |
| <b>4 ... 20 mA</b>            | supply signal, jumper selectable command | PM . . I . .  |
| <b>flow 100 l/min</b>         | increased flow rate                      | PM . . . . HF |
| <b>panel mounting</b>         | on plane level                           | PM . P . . .  |
| <b>mounting for manifolds</b> | connections downwards                    | PM . M . . .  |

### Accessories, enclosed

**manifold block** for 2 to 7 valves number of valves added to order number **SBM-**



\*1 at 7 bar supply pressure and open outlet, at regulated flow rate of 3 l/min  
\*2 higher supply pressures on request



Order example:  
**PM1DE-B1**  
China website: www.duray-control.cn

