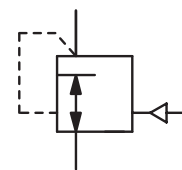


# High Pressure Volume Booster with Transmission Ratio, up to 310 bar

RH3-J

<b>Description</b>	Highly reliable high pressure volume booster with diaphragm and high flow. In addition, the booster features high sensitivity and excellent regulating characteristics.		
<b>Media</b>	compressed air, non-corrosive gases or liquids		
<b>Supply pressure</b>	max. 260 bar, optionally 345 bar or 310 bar		
<b>Test pressure</b>	150% of maximum supply pressure according to regulations ANSI / ASME B31.3		
<b>Pilot pressure</b>	see chart, pilot port G $\frac{1}{8}$		
<b>Leakage rate</b>	< 1x 10 <sup>-4</sup> mbar l/s He		
<b>Air consumption</b>	without constant bleed		
<b>Relieving function</b>	non-relieving		
<b>Gauge port</b>	not available, optionally 1/4" NPT at inlet and outlet		
<b>Mounting position</b>	any		
<b>Temperature range</b>	-25 °C to 100 °C / -13 °F to 212 °F		
<b>Material</b>	Body: brass, optionally stainless steel	Elastomer: FKM	
	Inner valve: PTFE, brass or optionally stainless steel		



1/2" NPT, 1:2 up to 1:19  
P<sub>1</sub>: max. 260/310 bar

Dimensions			K <sub>v</sub>	Flow rate	Signal pressure	Pressure range	Transmission ratio	Order number
A	B	C	value	m <sup>3</sup> /h*1	l/min*1	max. bar	bar	signal : outlet
mm	mm	mm	(m <sup>3</sup> /h)					

High pressure booster						supply pressure max. 260 bar, non-relieving, without constant bleed, connection thread 1/2" NPT			RH3-J
76	170	45	1.7	420	7000	21	0... 42	1 : 2	RH3-J402
						17	0... 70	1 : 4	RH3-J404
						5	0... 42	1 : 8	RH3-J408
						5	0... 70	1 : 13	RH3-J413
						5	0... 104	1 : 19	RH3-J419



RH3-J

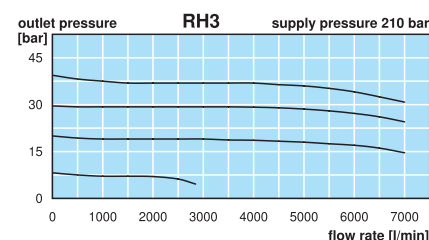
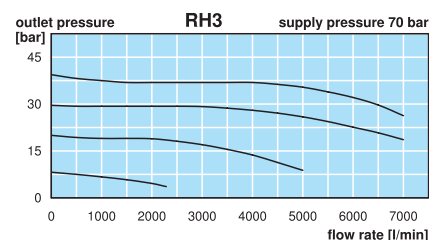
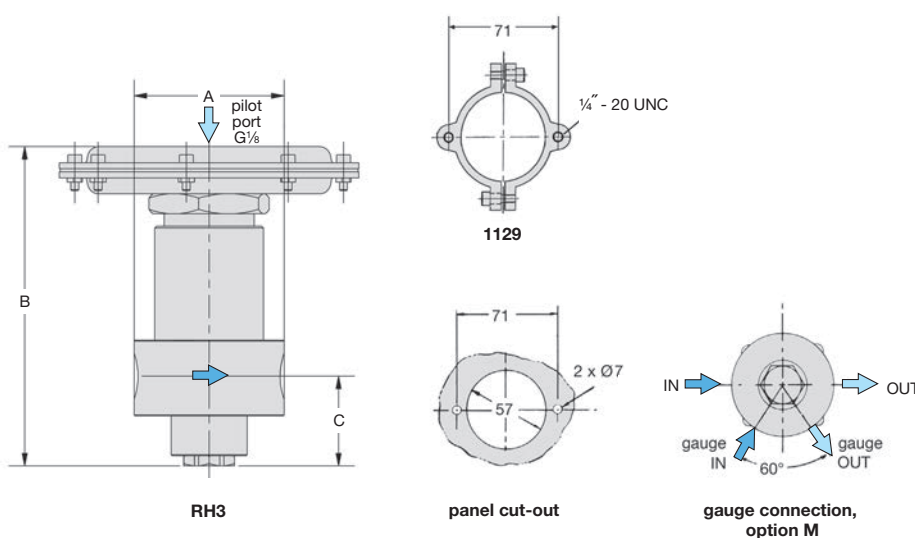
## Special options, add the appropriate letter

3/4" NPT	connection thread								RH3-J6 . .
SST, 310 bar	body made of stainless steel 316								RH3-J . . . S1
gauge port	1/4" NPT for inlet and outlet								RH3-J . . . M
brass gauge	for brass body,	on the input side	HM	output side					RH3-J . . . MGM
SST gauge	for stainless steel body,	on the input side	H	output side					RH3-J . . . MG

## Accessories, enclosed

set of brackets for panel mounting

1129



\*1 at 210 bar supply pressure and 40 bar outlet pressure



Order example:  
RH3-J402

China website: [www.duray-control.cn](http://www.duray-control.cn)