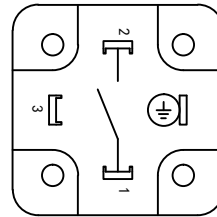
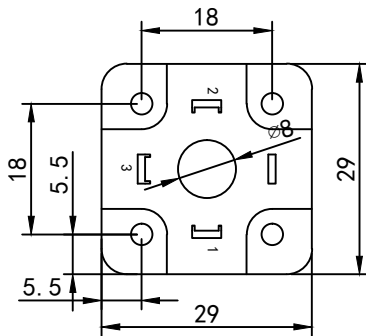
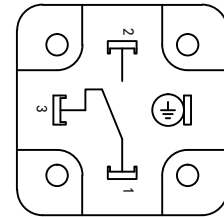


[外形尺寸] Outline Demension

接线图 (PIN OUT)



Form A (normally open)



Form C (change over)

Hirschmann Connector

开关参数 Switch Characteristic

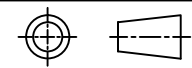
1. 干簧管型号 Switching Specifaction	1: (Normally open)	2: (Normally open High voltage)	3: (change over)
	Form A	Form A (HV)	Form C
2. 最大接点容量 Max Contact Rating	10W	10W	5W
3. 最大开关电压 Max Switch Voltage	DC200V	AC265V/DC200V	DC175V
4. 最小击穿电压 Min Breakdown Voltage	DC250V	DC400V	DC400V
5. 最大开关电流 Max Switch Current	0.5A	AC0.3A/DC0.4A	0.25A
6. 最大负载电流 Max Carry Current	1.0A	1.4A	1.5A

性能参数 Physical Characteristic

1. 耐冲击性 Min Shock:	30G
2. 耐振动性 Min Vibration:	30G (10~50Hz)
3. 使用温度范围 Temp. Rating:	-30~80°C
4. 热冲击性 Heat Shock:	-40~85°C

订购信息 Order Information

系列 Series	触点形式 Contact Form	开关参数 Switch Characteristic	磁性特征 (灵敏度) Magnetical Specifaction (Sensitivity)
MS31-	XX	X	X
选项 OPTIONS	1A: 1Form A 1C: 1Form C	1: 10W 2: 10W (HV) 3: 5W	1: 10AT-15AT 2: 15AT-20AT 3: 20AT-25AT 4: 25AT-30AT

备注 Remark: RoHS	设计 Designed by	zhangxiaojing	品名 TITLE	
	审查 Checked by	Xu Deng Kui	接近开关 Proximity Switch	
	批准 Approved by	Xu Tao	产品型号 P/N	版本 Version: V1.0
	日期 Date	2014. 12. 24	MS31	页次 Page: 1/1