



Standard



RENAULT

OMCR
STANDARD DIE COMPONENTS

15

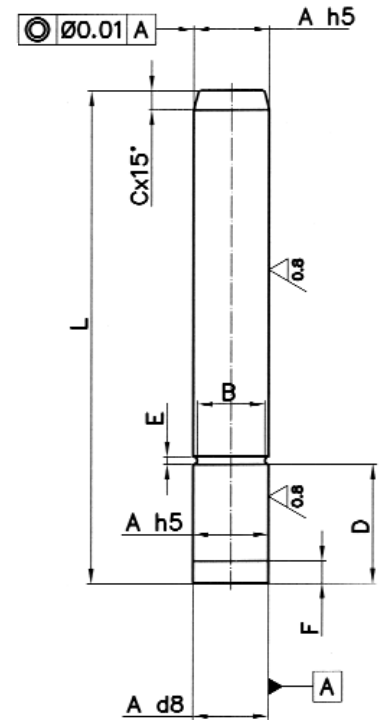
Mat.: 16MnCr5
HRC 60÷62



OMCR CODE
E45.12.040280



PSA MABEC CODE	RENAULT MABEC CODE	OMCR CODE	A	L	B	C	D	E	F
-	-	E45.12.025100		100					
-	R100 018 363	E45.12.025125		125					
-	-	E45.12.025140		140					
-	-	E45.12.025160	025	160	22,3	8	25	2,7	8
-	-	E45.12.025180		180					
-	-	E45.12.025200		200					
-	-	E45.12.025220		220					
-	-	E45.12.032125		125					
-	P446 116 817	E45.12.032140		140					
-	P446 116 815	E45.12.032160		160					
-	-	E45.12.032180	032	180	27,8	10	32		
-	P446 116 816	E45.12.032200		200					
-	-	E45.12.032220		220					
-	-	E45.12.032250		250					
P446 117 470	-	E45.12.040180		180					
P446 117 401	-	E45.12.040200		200					
P446 117 476	-	E45.12.040220		220					
-	-	E45.12.040250	040	250	35,8	12	63	4,2	12
-	-	E45.12.040280		280					
-	-	E45.12.040315		315					
-	-	E45.12.050200		200					
P446 118 170	P446 118 100	E45.12.050220		220					
P446 118 174	-	E45.12.050250		250					
P446 118 101	P446 118 101	E45.12.050280	50	280	45,8	16	80		
-	-	E45.12.050315		315					
-	-	E45.12.050355		355					
-	-	E45.12.050400		400					
P446 118 701	P446 118 701	E45.12.063250		250					
-	P446 118 707	E45.12.063280		280					
P446 118 702	P446 118 702	E45.12.063315	63	315	56,8		100		
-	-	E45.12.063355		355					
-	-	E45.12.063400		400					
P446 119 200	P446 119 200	E45.12.080315		315					
P446 119 270	P446 119 201	E45.12.080355	80	355	73,8		125	6,2	18
-	R100 221 692	E45.12.080400		400					
-	-	E45.12.080450		450					
-	-	E45.12.100355		355					
-	P446 119 800	E45.12.100400		400					
-	P446 119 801	E45.12.100450	100	450	93,8		160		
-	-	E45.12.100500		500					



E24.52.120.G/EM24.52.100.J

Ed. 01/2005
File: E4713025÷E4713100

Ed. 06/2006

AFNOR CLAMPING FLANGE SPANNFLANSCH AFNOR RITEGNO PER COLONNA AFNOR

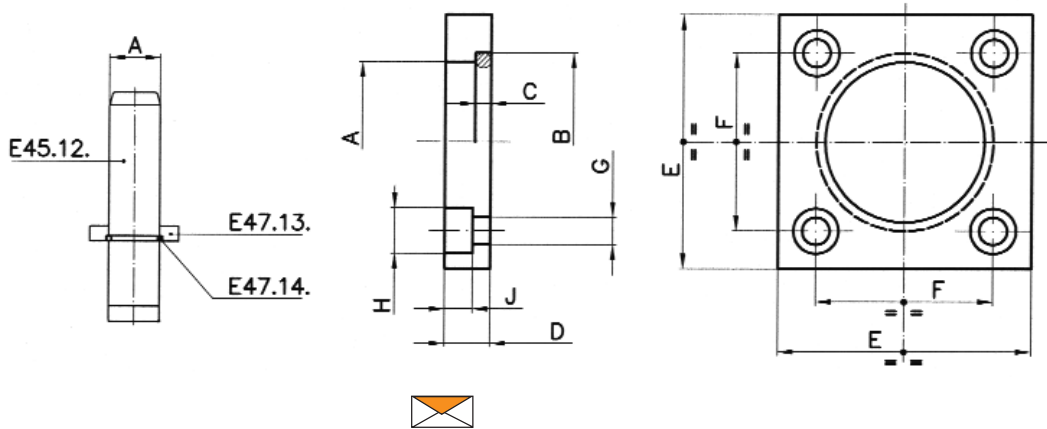
STOCK

Mat.: CK45



OMCR CODE

E47.13.025



PSA MABEC CODE	RENAULT MABEC CODE	OMCR CODE	A	B	G	H	J	D	C	E	F
Z000 248 844	P483 784 100	E47.13.025	025	28	6,6	11	7	10	2,7	45	31
P446 932 711	P483 784 600	E47.13.032	032	37							
P446 932 701	P483 795 100	E47.13.040	040	45	9	16	9	14	4,2	70	50
P446 932 702	P483 795 401	E47.13.050	050	55							
P446 932 703	P483 795 801	E47.13.063	063	70	11	18	11	18	6,2	100	70
P446 932 704	P483 796 001	E47.13.080	080	87							
-	P483 796 401	E47.13.100	100	107	13	22	14	20	6,2	140	100

E24.52.128.G/EM24.52.100.J

Ed. 11/1987
File: E4612025040÷E4612100160

Ed. 06/2006

GUIDE BUSH AFNOR FÜHRUNGSBUCHSE AFNOR BOCCOLA AUTOLUBRIFICANTE AFNOR

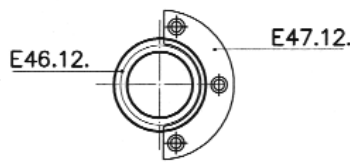
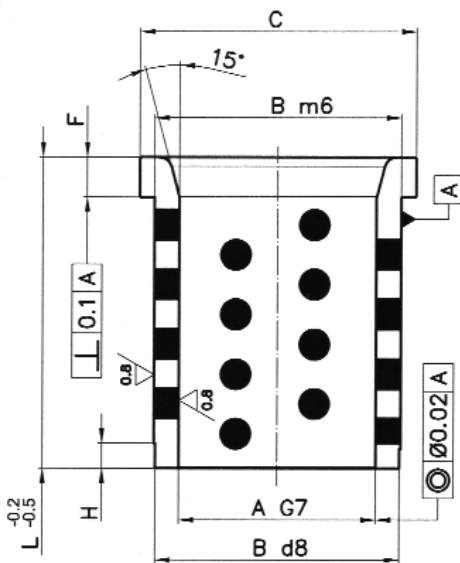
STOCK

Mat.: Bronze + Graphite
HB>190



OMCR CODE

E46.12.080125



PSA MABEC CODE	RENAULT MABEC CODE	OMCR CODE	A	B	C	L	F	H
-	-	E46.12.025040	025	35	40	040	5	5
-	-	E46.12.032050	032	44	50	050	6	
X345 274 670	M764 539 401	E46.12.040063	040	52	60	063	8	8
X345 281 970	M764 544 501	E46.12.050080	050	63	71	080	10	
X345 287 270	M764 549 501	E46.12.063100	063	80	90	100	12	
X345 292 370	M764 554 601	E46.12.080125	080	100	112	125	16	10
-	X345 298 500	E46.12.100160	100	125	140	160	20	



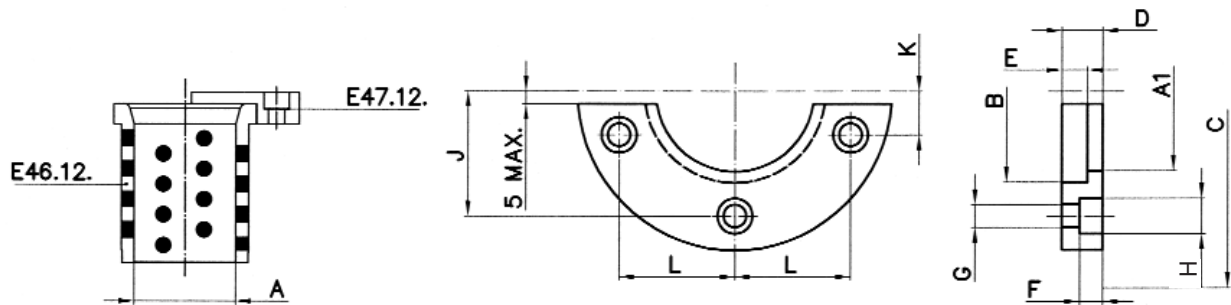
AFNOR RETAINING FLANGE
SICHERUNGSFLANSCH AFNOR
RITEGNO AFNOR

E24.52.130.G/EM24.52.100.J

Ed. 01/1995

Ed. 06/2006
 File: E4712025÷E4712100

STOCK	Mat.: CK45	 OMCR CODE E47.12.025
-------	------------	--



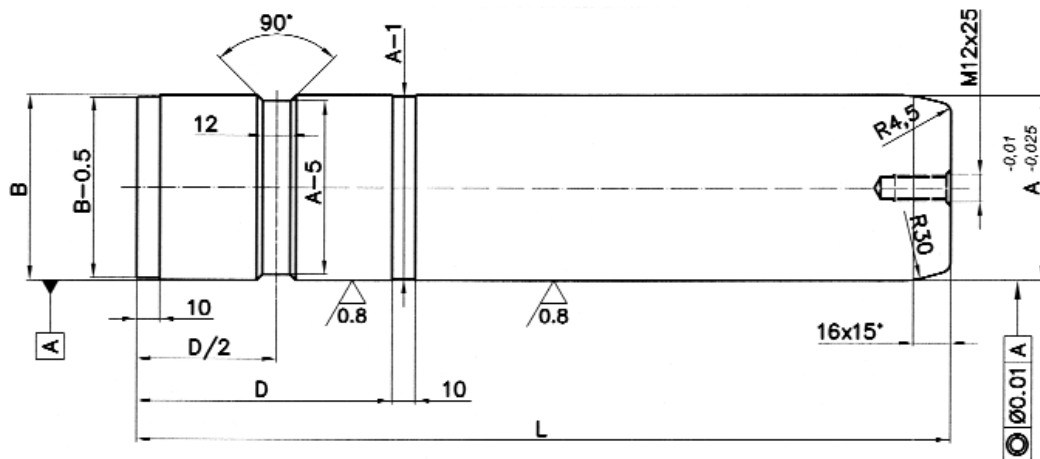
PSA MABEC CODE	RENAULT MABEC CODE	OMCR CODE	A	A1	B	C	D	E	F	G	H	K	J	L	
-	M321 534 500	E47.12.025	025	032	41	72	10	5					20	-	20
P446 932 717	M321 544 501	E47.12.032	032	040	51	80	12	6	7	6,6	12		21	-	25
P446 932 712	M321 548 501	E47.12.040	040	050	61	100		8					14	41	38,5
P446 932 713	M321 552 601	E47.12.050	050	063	72	125	16	10	9	9	16		17	49	46
P446 932 714	M321 556 601	E47.12.063	063	080	91	140	20	12	11	11	18			57,5	55
P446 932 715	M321 560 601	E47.12.080	080	100	113	180	25	16					20	72	70
-	M321 562 700	E47.12.100	100	125	141	200	32	20	13	14	22		25	85	81

GUIDE POST
FÜHRUNGSSÄULE
COLONNA GUIDA

EM24.52.100.J

Ed. 06/2006

 15	Mat.: 16MnCr5 HRC 60÷62		 OMCR CODE A07.25.080350
--	----------------------------	---	---



RENAULT MABEC CODE	OMCR CODE	A	B	D	L
R100 342 962	A07.25.080350	80	80 ^{+0,05} _{+0,04}	120	350
R100 342 963	A07.25.080400				400
R100 342 964	A07.25.100400	100	100 ^{+0,055} _{+0,045}	150	400
R100 342 965	A07.25.100450				450



EM24.52.100.J

Ed. 06/2006
File: E4714025÷E4714100

AFNOR RETAINING RING HALTERING AFNOR ANELLO DI TENUTA AFNOR

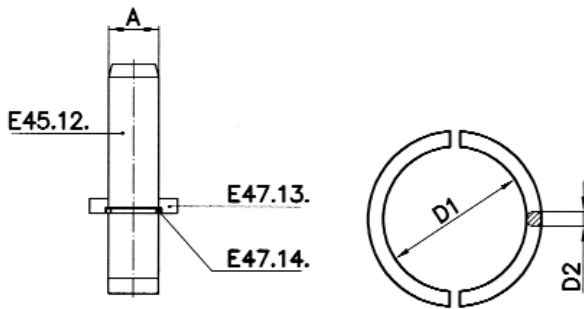
STOCK

Mat.: St37



OMCR CODE

E47.14.080



RENAULT MABEC CODE	OMCR CODE	A	D1	D2
P446 180 200	E47.14.025	025	22,5	2,5
P446 180 300	E47.14.032	032	28	4
P446 180 400	E47.14.040	040	36	
P446 180 500	E47.14.050	050	46	6
P446 180 600	E47.14.063	063	57	
P446 180 700	E47.14.080	080	74	
P446 180 800	E47.14.100	100	94	

EM24.52.100.J

Ed. 06/2006

TOE CLAMP HALTESTÜCK RITEGNO

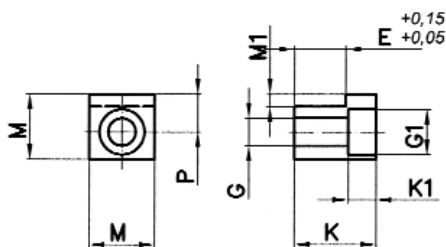
STOCK

Mat.: CK45



OMCR CODE

A07.30.1812



RENAULT MABEC CODE	OMCR CODE	E	G	G1	K	K1	M	M1	P
R100 171 981	A07.30.1812	8	6,5	11	12	7	18	3	9,5
R100 171 995	A07.30.2216	10	9	15	16	9	22	4	12
R100 171 998	A07.30.2620	12	11	18	20	11	26	5	15
R100 172 000	A07.30.2625	16			25				
R100 172 001	A07.30.2632	20			32				

AFNOR CLAMPING FLANGE
SPANNFLANSCH AFNOR
RITEGNO PER BOCCOLA AFNOR

E24.52.130.G

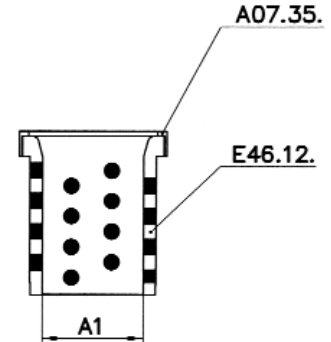
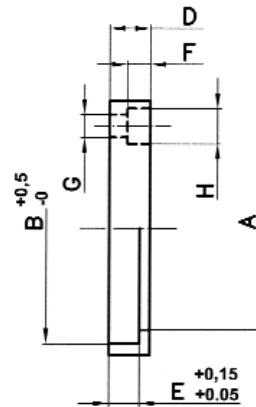
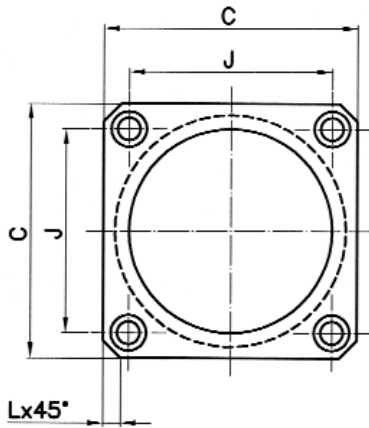
Ed. 01/1995

STOCK

Mat.: CK45



OMCR CODE
A07.35.040



PSA MABEC CODE	OMCR CODE	A	A1	B	C	D	E	F	G	H	J	L
P446 932 719	A07.35.040	50	40	61	75	12	8	7	6,5	12	58	6
P446 932 720	A07.35.050	60	50	72	85	16	10	9	9	16	65	7
P446 932 721	A07.35.063	80	63	91	100		12	80				
P446 932 722	A07.35.080	100	80	113	117	20	16	12			98	9

BLOCK
ABSTANDSBLOCK
TASSELLO

E24.52.135.G

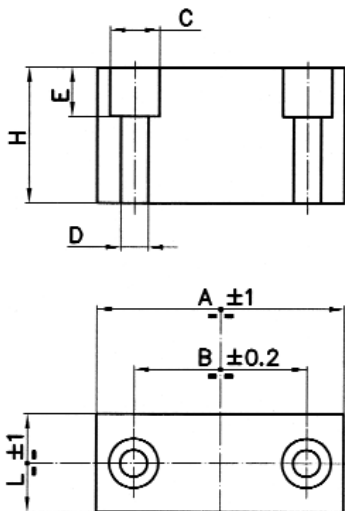
Ed. 11/1991

STOCK

Mat.: CK45



OMCR CODE
A01.10.08040055



PSA MABEC CODE	OMCR CODE	A	L	H	B	C	D	E
A699 101 605	A01.10.08030055	080	30	055	55	18	9	20
A699 101 604	A01.10.08040055		40					
A699 101 704	A01.10.10040055	100						
A699 101 804	A01.10.11040055	110	30	062	50	13	7	54
A699 101 504	A01.10.07030062	070						
J859 912 001	A01.10.08035101	080	35	101	55	18	9	57
J856 750 087	A01.10.10050137	100	50	137	60	22	13	55
J859 912 002	A01.10.12550137	125			85			
A699 101 705	A01.10.10040138	100	40	138	55		14	43
A699 101 805	A01.10.12060138	120	60		80			

E24.52.150.G/EM24.52.100.J

Ed. 01/2007

Ed. 06/2006

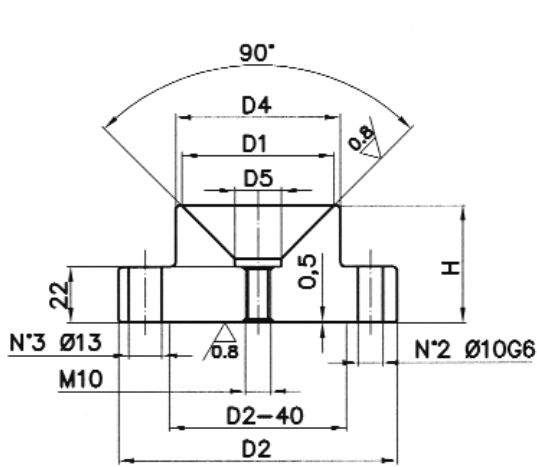
LOCATING CONE KEGELDISTANZ CONO DI CENTRAGGIO

STOCK ...

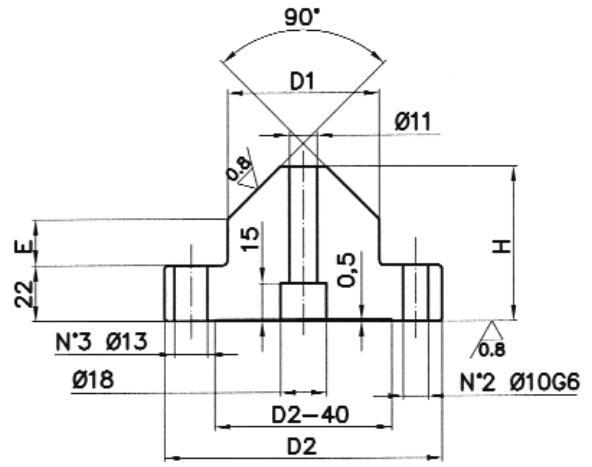


OMCR CODE

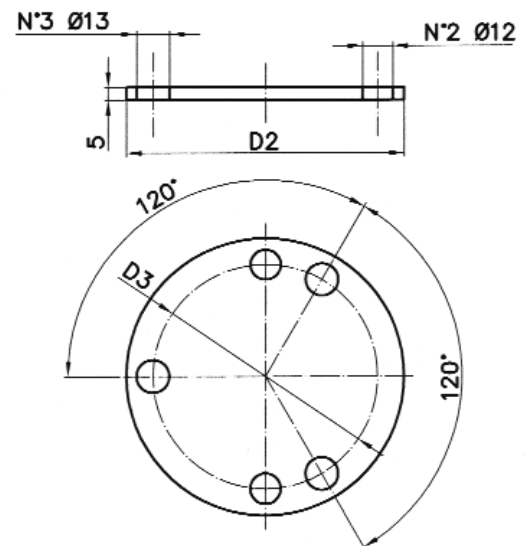
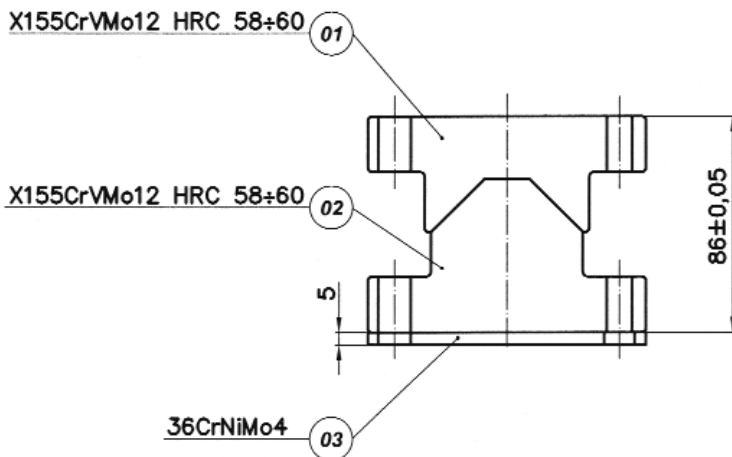
A02.10.090



FORM "A"



FORM "B"



PSA MABEC CODE	RENAULT MABEC CODE	OMCR CODE	Form	D1	D2	D3	D4	D5	E	H
Z000 400 139	R901 138 222	A02.10.090	A	40	090	69	45	18,5	-	36
			B			67	-	-	28	61
Z000 400 140	R901 138 223	A02.10.110	A	60	110	89	65	18,5	-	46
			B			-	-	18	61	



**WEAR PLATE AFNOR
GLEITPLATTE AFNOR
PIASTRA GUIDA AFNOR**

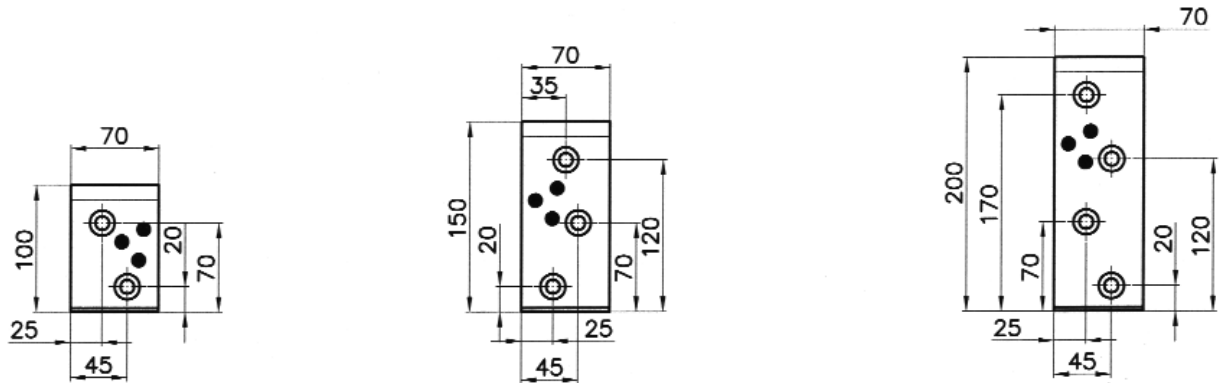
E24.52.504.G/EM24.52.300.B

Ed. 06/2006

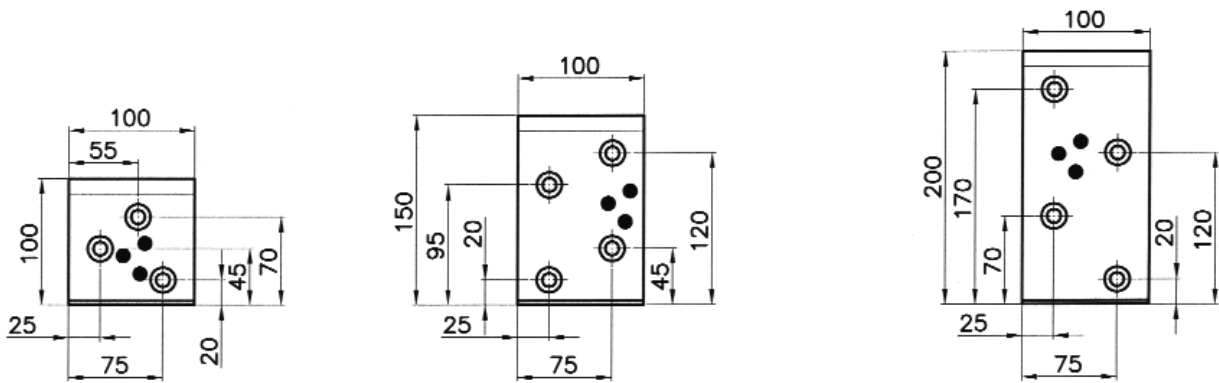
Ed. 05/2006

File: E401407020100÷E401410020300

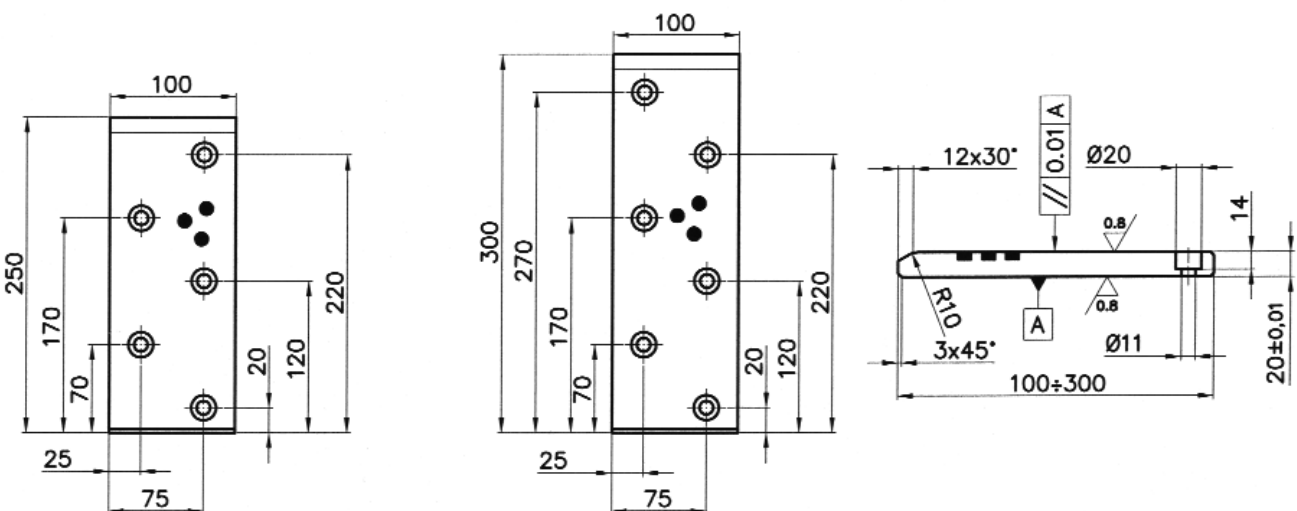
STOCK	Mat.: Bronze + Graphite HB>190	OMCR CODE E40.14.07020200
-------	-----------------------------------	------------------------------



PSA MABEC CODE	Z000 166 214	PSA MABEC CODE	Z000 166 216	PSA MABEC CODE	Z000 166 221
RENAULT MABEC CODE	R100 092 843	RENAULT MABEC CODE	R100 092 844	RENAULT MABEC CODE	R100 092 845
OMCR CODE	E40.14.07020100	OMCR CODE	E40.14.07020150	OMCR CODE	E40.14.07020200



PSA MABEC CODE	Z000 166 215	PSA MABEC CODE	Z000 166 217	PSA MABEC CODE	Z000 166 222
RENAULT MABEC CODE	R100 092 846	RENAULT MABEC CODE	R100 092 883	RENAULT MABEC CODE	R100 092 884
OMCR CODE	E40.14.10020100	OMCR CODE	E40.14.10020150	OMCR CODE	E40.14.10020200



PSA MABEC CODE	Z000 166 225	PSA MABEC CODE	Z000 166 227
RENAULT MABEC CODE	R100 092 885	RENAULT MABEC CODE	R100 092 886
OMCR CODE	E40.14.10020250	OMCR CODE	E40.14.10020300

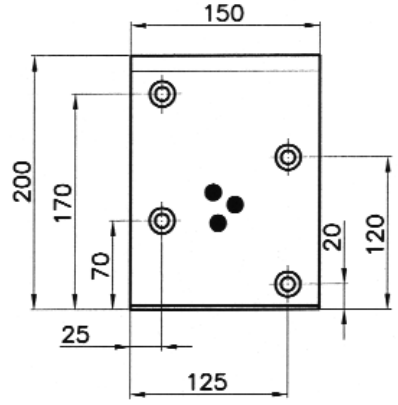
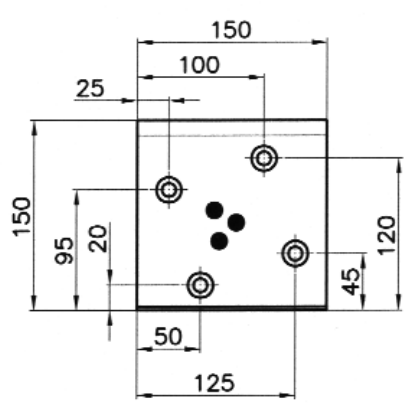
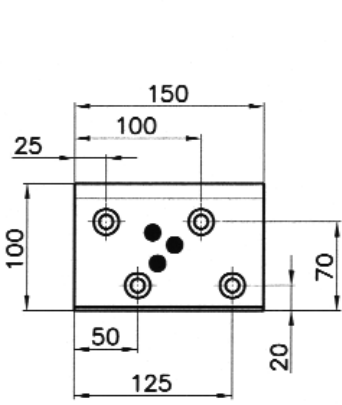


E24.52.504.G/EM24.52.300.B

Ed. 06/2006 Ed. 05/2006
File: E401415020100÷E401420020100

**WEAR PLATE AFNOR
GLEITPLATTE AFNOR
PIASTRA GUIDA AFNOR**

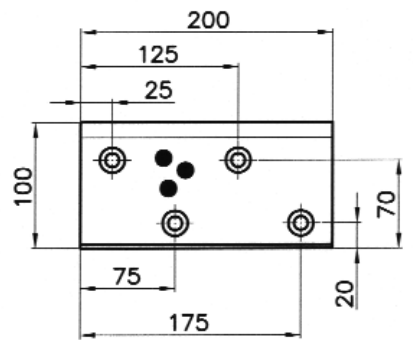
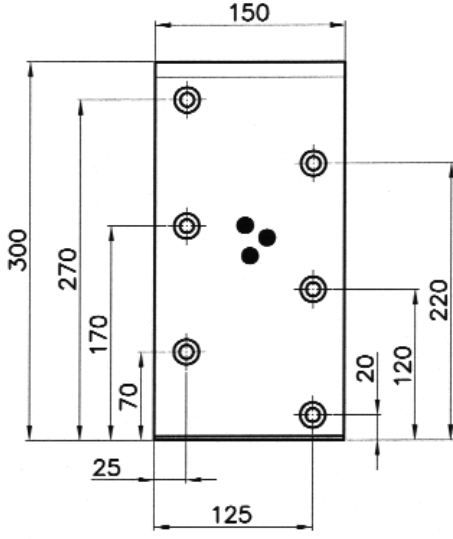
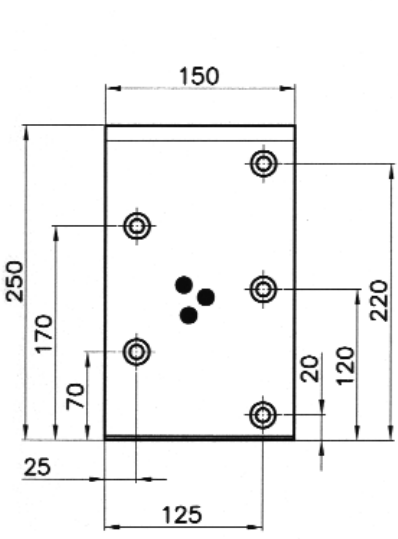
STOCK		Mat.: Bronze + Graphite HB>190			OMCR CODE E40.14.15020200
--------------	--	--	--	--	-------------------------------------



PSA MABEC CODE	Z000 166 218
RENAULT MABEC CODE	R100 092 887
OMCR CODE	E40.14.15020100

PSA MABEC CODE	Z000 166 219
RENAULT MABEC CODE	R100 092 888
OMCR CODE	E40.14.15020150

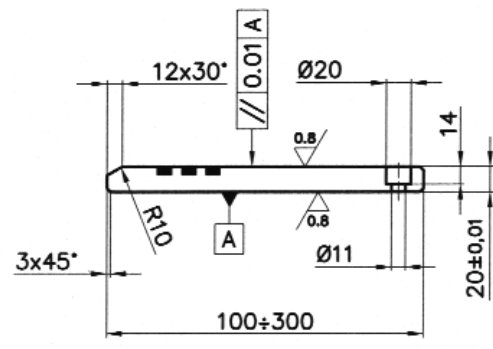
PSA MABEC CODE	Z000 166 223
RENAULT MABEC CODE	R100 092 890
OMCR CODE	E40.14.15020200



PSA MABEC CODE	Z000 166 226
RENAULT MABEC CODE	R100 092 893
OMCR CODE	E40.14.15020250

PSA MABEC CODE	Z000 166 228
RENAULT MABEC CODE	R100 092 894
OMCR CODE	E40.14.15020300

PSA MABEC CODE	Z000 166 224
RENAULT MABEC CODE	R100 092 895
OMCR CODE	E40.14.20020100



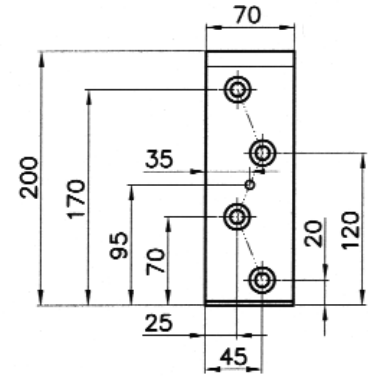
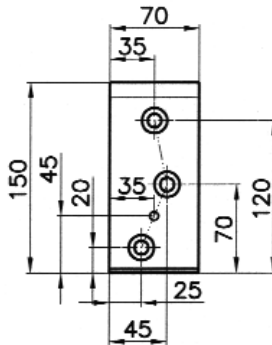
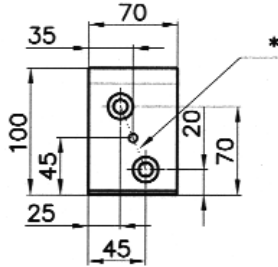
STOCK



Mat.: 16MnCr5
HRC 58±60



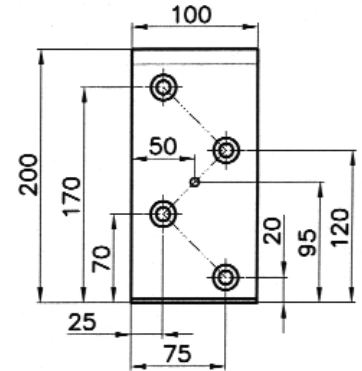
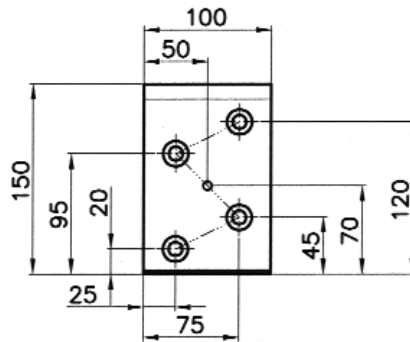
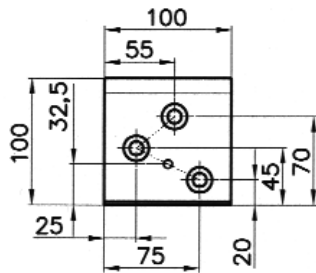
OMCR CODE
A07.10.07021200



		H
PSA CODE	Z000 166 213	
RENAULT CODE	P446 625 854	21±0.25
OMCR CODE	A07.10.07021100	
	A07.10.07020100	20±0.01

		H
PSA CODE	P446 626 558	
RENAULT CODE	P446 626 558	21±0.25
OMCR CODE	A07.10.07021150	
	A07.10.07020150	20±0.01

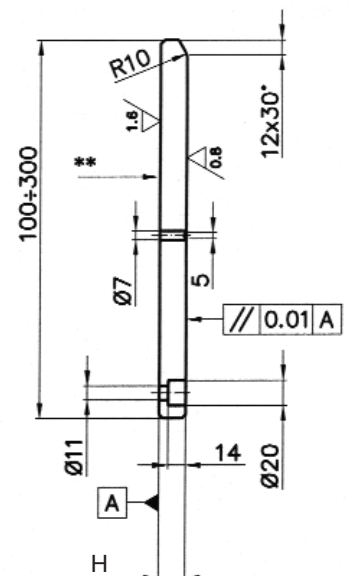
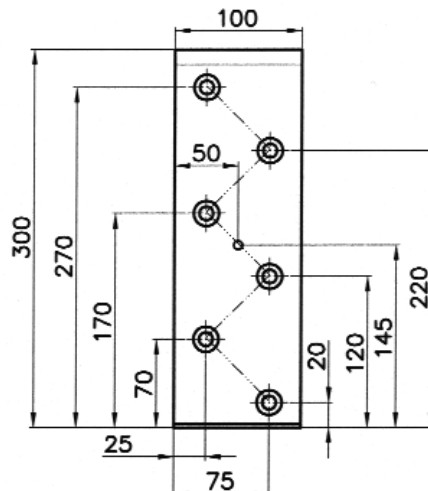
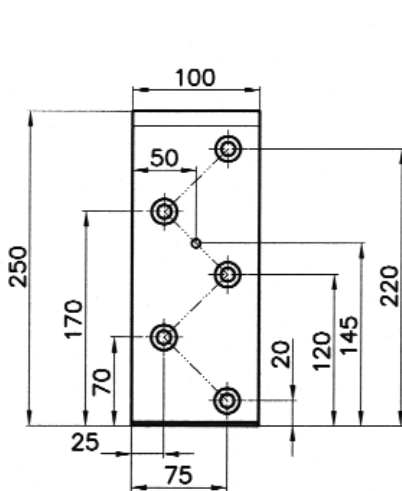
		H
PSA CODE	P446 627 059	
RENAULT CODE	P446 627 059	21±0.25
OMCR CODE	A07.10.07021200	
	A07.10.07020200	20±0.01



		H
PSA CODE	P446 625 855	
RENAULT CODE	P446 625 855	21±0.25
OMCR CODE	A07.10.10021100	
	A07.10.10020100	20±0.01

		H
PSA CODE	P446 626 559	
RENAULT CODE	P446 626 559	21±0.25
OMCR CODE	A07.10.10021150	
	A07.10.10020150	20±0.01

		H
PSA CODE	P446 627 060	
RENAULT CODE	P446 627 060	21±0.25
OMCR CODE	A07.10.10021200	
	A07.10.10020200	20±0.01



		H
PSA CODE	P446 627 454	
RENAULT CODE	P446 627 454	21±0.25
OMCR CODE	A07.10.10021250	
	A07.10.10020250	20±0.01

		H
PSA CODE	P446 627 754	
RENAULT CODE	P446 627 754	21±0.25
OMCR CODE	A07.10.10021300	
	A07.10.10020300	20±0.01

*Lubricating groove
Für schmierung
Rainura di lubrificazione

**Not hardened surface
Nicht einseitgehärtet fläche
Superficie non temprata

E24.52.504.G/EM24.52.300.B

Ed. 06/2006

Ed. 05/2006

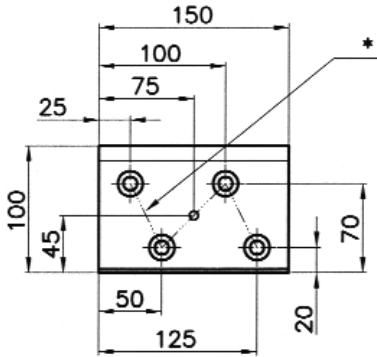
WEAR PLATE AFNOR TYPE GLEITPLATTE AFNOR TYP PIASTRA GUIDA TIPO AFNOR

STOCK

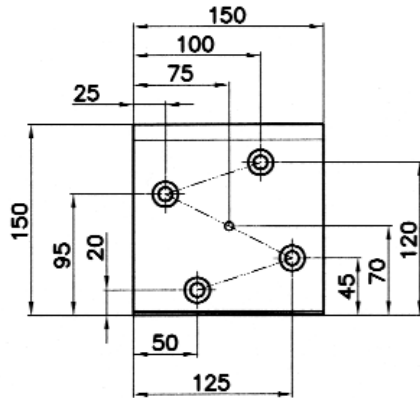
Mat.: 16MnCr5
HRC 58±60



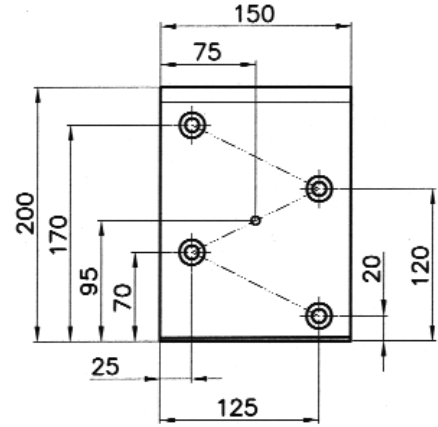
OMCR CODE
A07.10.15021150



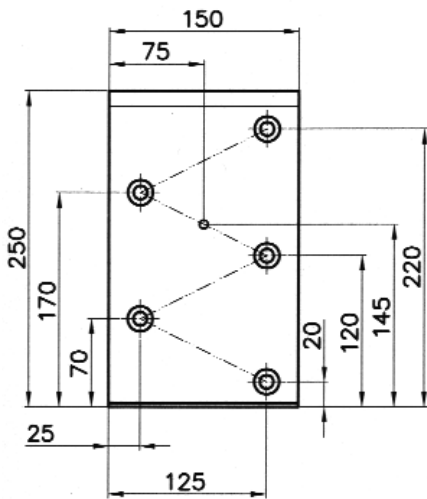
		H
PSA CODE	P446 626 560	
RENAULT CODE	P446 626 560	21±0.25
OMCR CODE	A07.10.15021100	
	A07.10.15020100	20±0.01



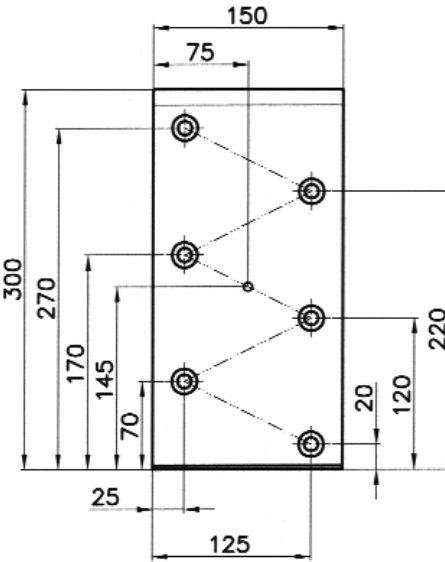
		H
PSA CODE	P446 626 561	
RENAULT CODE	P446 626 561	21±0.25
OMCR CODE	A07.10.15021150	
	A07.10.15020150	20±0.01



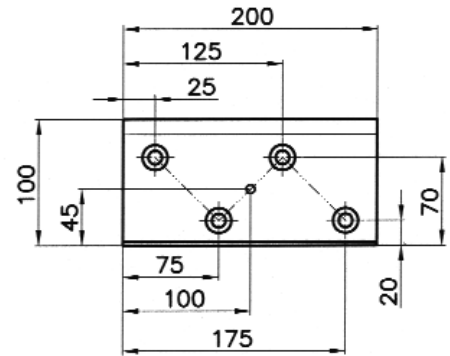
		H
PSA CODE	P446 627 061	
RENAULT CODE	P446 627 061	21±0.25
OMCR CODE	A07.10.15021200	
	A07.10.15020200	20±0.01



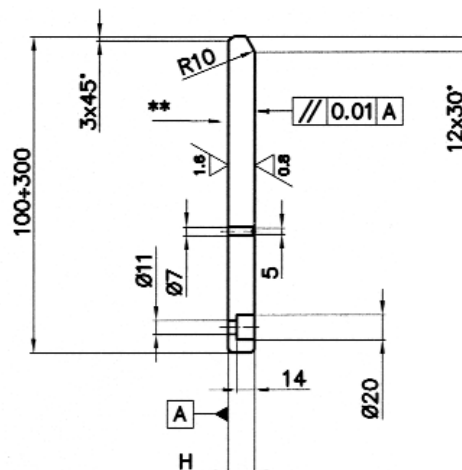
		H
PSA CODE	P446 627 455	
RENAULT CODE	P446 627 455	21±0.25
OMCR CODE	A07.10.15021250	
	A07.10.15020250	20±0.01



		H
PSA CODE	P446 627 755	
RENAULT CODE	P446 627 755	21±0.25
OMCR CODE	A07.10.15021300	
	A07.10.15020300	20±0.01



		H
PSA CODE	Z000 166 220	
RENAULT CODE	P446 627 062	21±0.25
OMCR CODE	A07.10.20021100	
	A07.10.20020100	20±0.01



* Lubricating groove
Für schmierung
Rainura di lubrificazione

** Not hardened surface
Nicht einsatzgehärtet fläche
Superficie non temprata



**ANGULAR GUIDE
WINKELLEISTE
GUIDA ANGOLARE**

EM24.52.500.B

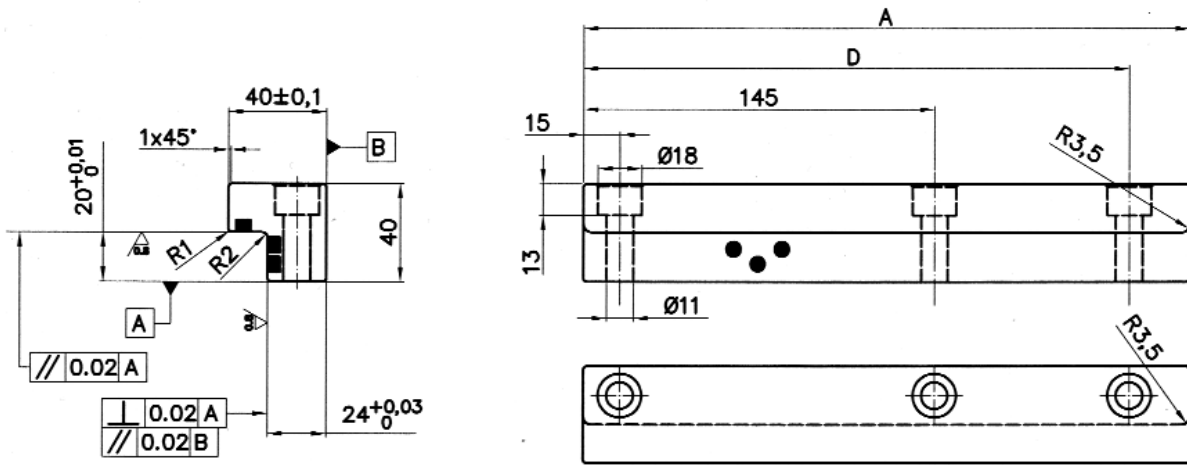
Ed. 07/2004

STOCK

Mat.: Bronze + Graphite
HB>190



OMCR CODE
A07.15.40250



RENAULT MABEC CODE	OMCR CODE	A	D
M764 523 701	A07.15.40250	250	225
M764 523 702	A07.15.40160	160	-

**SLIDER
FÜHRUNGSLEISTE
GUIDA**

EM24.52.500.B

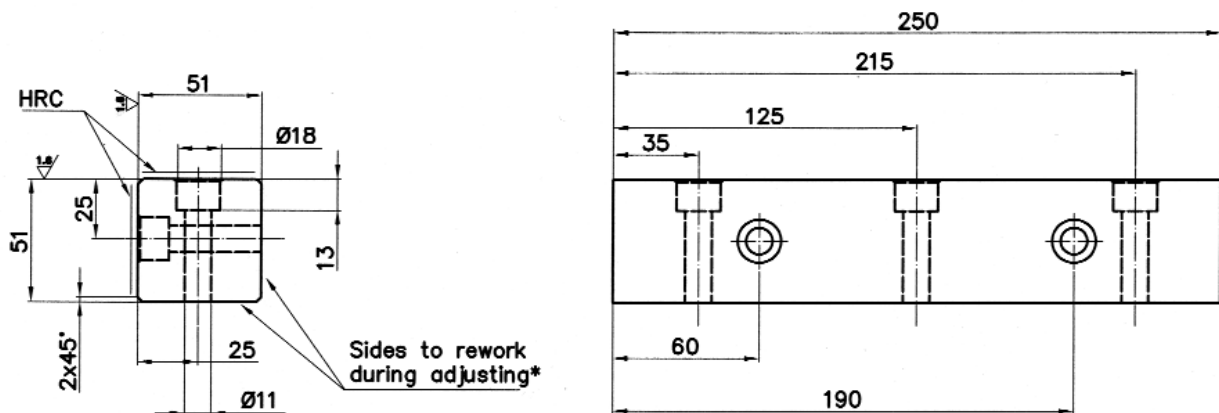
Ed. 07/2004

15

Mat.: 16MnCr5
HRC 60÷62



OMCR CODE
A07.20.50250



*Anpassung der Flächen zur Abstimmung
Lati da rilavorare in adattamento



OMCR CODE
A07. 20.50250

E24.55.265.G/EM24.55.100.F

Ed. 09/2007

Ed. 06/2006

PAD RETAINER PIN STECKBOLZEN PERNO DI ARRESTO

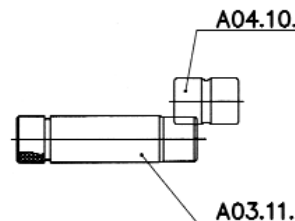
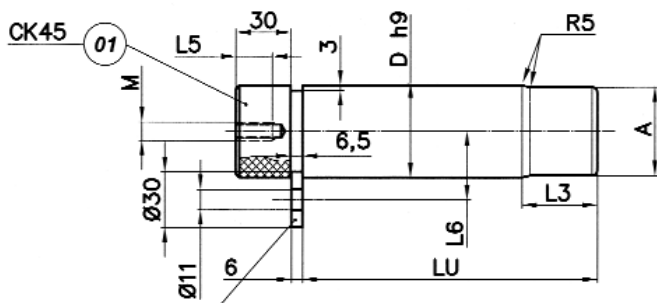
STOCK ...

Mat.: CK45



OMCR CODE

A03.11.50165



PSA CODE	RENAULT CODE	OMCR CODE	A	D	L3	LU	M	L5	L6
Z000 400 337	R100 306 188	A03.11.20081	18	20	19	081	M8	15	23
Z000 400 338	R100 306 190	A03.11.25081	23	25					25
Z000 400 339	R100 306 191	A03.11.25098	30	32					26
Z000 400 487	R100 306 194	A03.11.32103				148			
Z000 400 342	R100 306 198	A03.11.32148							
Z000 400 345	R100 306 201	A03.11.40132	38	40	33	132	M10	20	32
Z000 400 346	R100 306 204	A03.11.40192				192			
Z000 400 349	R100 306 207	A03.11.50165	48	50	41	165			37,5
Z000 400 350	R100 306 209	A03.11.50220				220			
Z000 400 353	R100 306 210	A03.11.63210				210	M12	25	44
Z000 400 354	R100 306 213	A03.11.63250	61	63	51	250			44
Z000 424 846	R100 357 232	A03.11.80210	78	80		210			52,5

E24.55.265.G/EM24.55.100.F

Ed. 09/2007

Ed. 06/2006

PAD RETAINER PIN STECKBOLZEN PERNO DI ARRESTO

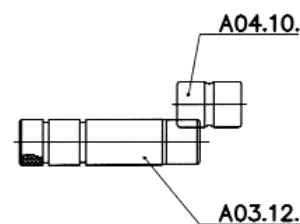
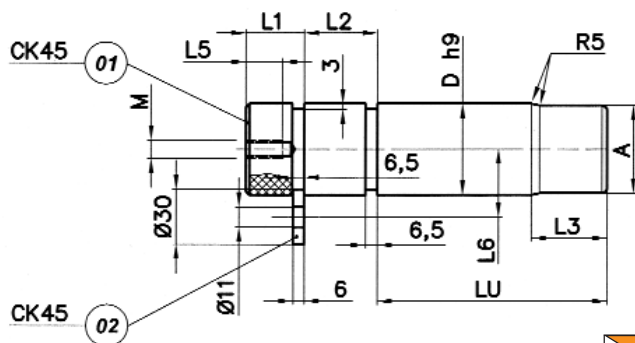
STOCK ...

Mat.: CK45



OMCR CODE

A03.12.50165



PSA CODE	RENAULT CODE	OMCR CODE	A	D	L1	L2	L3	LU	M	L5	L6
Z000 400 340	R100 306 215	A03.12.25081	23	25	22	20	19	081	M8	15	25
Z000 400 341	R100 306 217	A03.12.25098									
Z000 400 343	R100 306 218	A03.12.32103	30	32							25
Z000 400 344	R100 306 219	A03.12.32148					148				
Z000 400 347	R100 306 220	A03.12.40132	38	40		32	33	132	M10	20	32
Z000 400 348	R100 306 221	A03.12.40192					192				
Z000 400 351	R100 306 223	A03.12.50165	48	50	32	40	41	165			37,5
Z000 400 352	R100 306 225	A03.12.50220					220				
Z000 400 355	R100 306 226	A03.12.63210	61	63	50	51	210	M12	25	44	
Z000 400 356	R100 306 227	A03.12.63250									



**SHOCK ABSORBER
HALTELEMENTE
AMMORTIZZATORE**

E24.55.265.G/EM24.55.100.F

Ed. 09/2007

Ed. 06/2006

STOCK

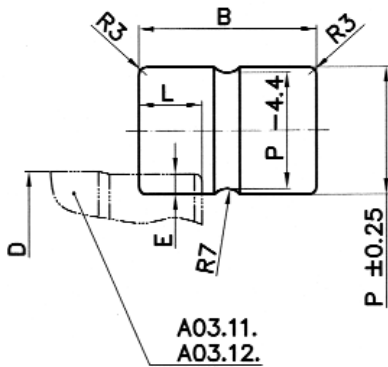
Mat.: Elastomer
92SH.



Without silicone
Ohne silikon
Senza silicone



OMCR CODE
A04.10.5070



PSA CODE	RENAULT CODE	OMCR CODE	D	P	B	L	E
Z000 404 675	X346 566 000	A04.10.2545	20	25	45	17	3
Z000 404 676	X346 566 801	A04.10.3250	25	32	50	17	6
X346 563 970	X346 567 400	A04.10.4060	32	40	60	18	6
Z000 404 677	X346 568 100	A04.10.5070	40	50	70	25	8
X346 564 970	X346 568 700	A04.10.6380	50	63	80	30	8
Z000 404 678	X346 569 201	A04.10.8090	63	80	90	34	10

**KEY
PASSFEDERN
CHIAVETTA**

E24.56.630.G

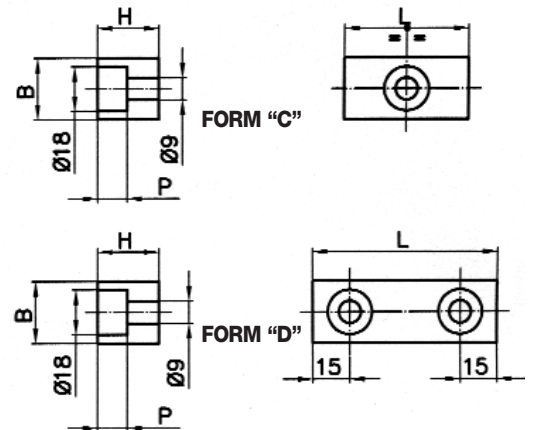
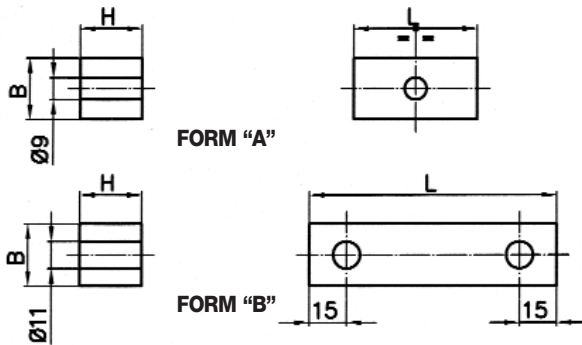
Ed. 02/1998

STOCK

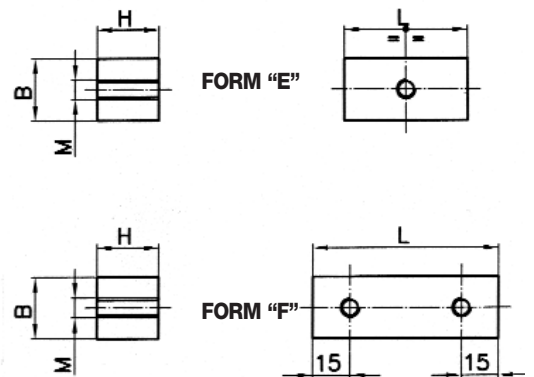
Mat.: CK45



OMCR CODE
A05.10.010



MABEC CODE	OMCR CODE	B	H	L	Form	M	P
X548 292 170	A05.10.001	20	20	50	A	-	-
J859 623 008	A05.10.002	25	25				
X548 299 870	A05.10.003	32	32	100	B	-	-
J859 623 003	A05.10.004	25	25	50	C	-	12
J859 623 004	A05.10.005			75	D	-	-
J859 623 013	A05.10.006	32	32	50	C	-	9
J859 623 014	A05.10.007			75	D	-	
J859 623 001	A05.10.008	25	25	50	E	M8	-
J859 623 002	A05.10.009			75	F		-
J859 623 006	A05.10.010			50	E		-
J859 623 007	A05.10.011	32	32	75	F	M10	-
J859 623 011	A05.10.012			50	E		-
J859 623 012	A05.10.013	32	32	75	F	M8	-
J859 623 016	A05.10.014			50	E		-
J859 623 017	A05.10.015	32	32	75	F	M10	-
				50	E		-



E24.57.385.G

Ed. 09/2001
File: C151145112÷C151145200

SLEEVE FÜHRUNGSEINHEIT CANOTTO GUIDA

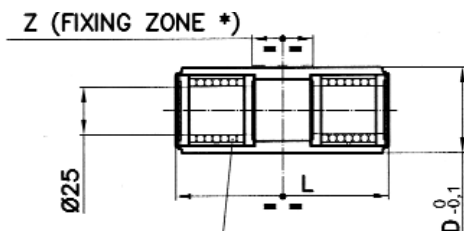
STOCK

Mat.: CK45



OMCR CODE

C15.11.45112



LINEAR BALL BEARING **
STAR 0658-225-40

*Befestigungsbereich klammer
Zona di fissaggio

**Kugelkäfig
Manicotto a sfere



MABEC CODE	OMCR CODE	D	L	Z
P446 905 005	C15.11.45112	45	112	32
P446 905 006	C15.11.45200		200	120

E24.57.385.G

Ed. 09/2001
File: C151010025

CLAMP BEFESTIGUNGSELEMENT MORSETTO

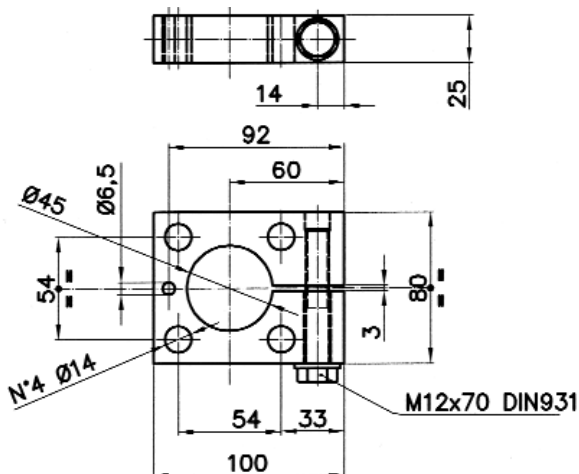
STOCK

Mat.: CK45



OMCR CODE

C15.10.10025



MABEC CODE	OMCR CODE
P446 932 718	C15.10.10025

E24.57.385.G

Ed. 09/2001

GUIDE POST FÜHRUNGSSÄULE COLONNA

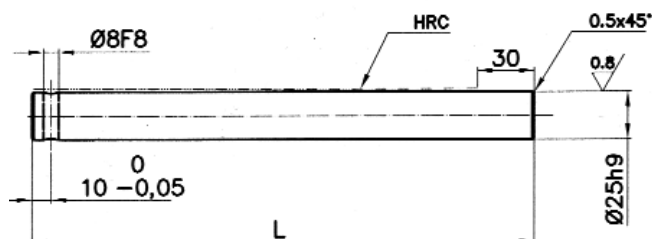
STOCK

Mat.: 16MnCr5
HRC 60÷62



OMCR CODE

A06.25.25500



MABEC CODE	OMCR CODE	L
P446 940 700	A06.25.25265	265
P446 940 701	A06.25.25350	350
P446 940 702	A06.25.25400	400
P446 940 703	A06.25.25450	450
P446 940 704	A06.25.25500	500



UNION BLOCK
BEFESTIGUNGSELEMENT
TASSELLO DI UNIONE

E24.57.385.G

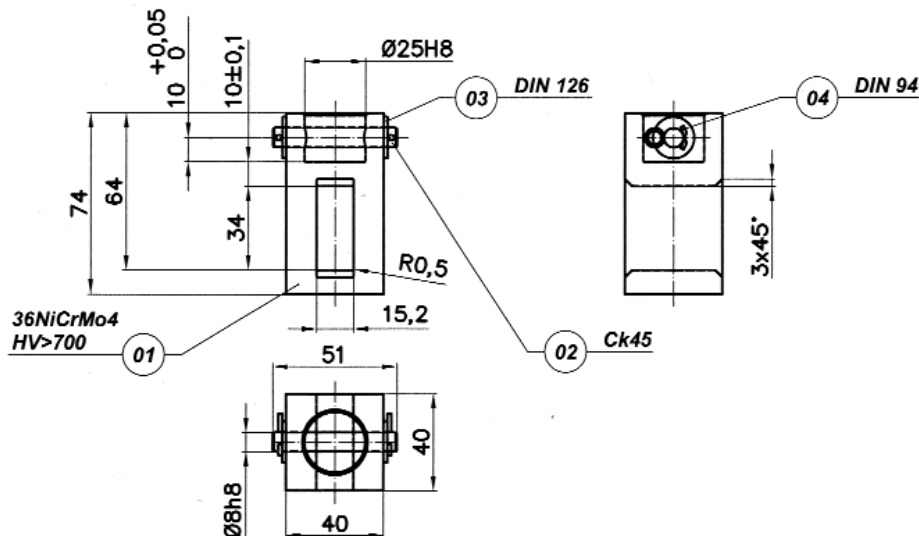
Ed. 09/2001

STOCK



OMCR CODE

A06.30.4025



MABEC CODE OMCR CODE

P446 942 700

A06.30.4025

VISUAL LOCATOR
ENDKONTROLLSTEMPEL
PUNZONE DI VISUALIZZAZIONE

E24.59.105.N/EM24.59.500

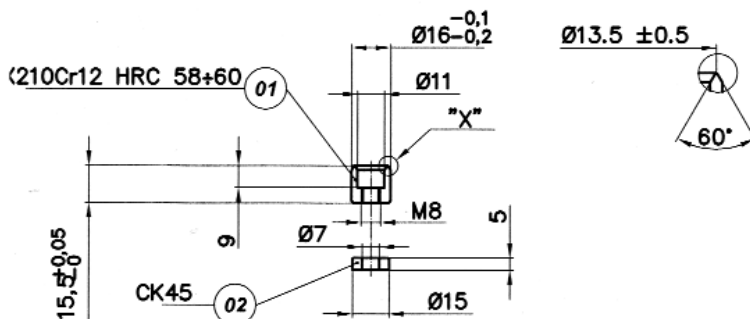
Ed. 09/1993

STOCK



OMCR CODE

A06.10.1615



PSA CODE RENAULT CODE OMCR CODE

P785 283 005

P785 283 005

A06.10.1615

PRESSURE PLATE
DRUCKPLATTE
PIASTRA DI REAZIONE

E24.59.330.G

Ed. 03/1995

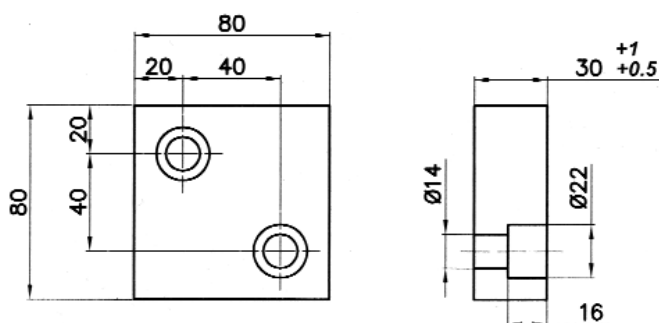
STOCK

Mat.: 36CrNiMo4



OMCR CODE

A01.11.8030



PSA CODE OMCR CODE

A699 101 906

A01.11.8030

E24.59.380.G/EM24.59.500

Ed. 09/2007

Ed. 06/2006

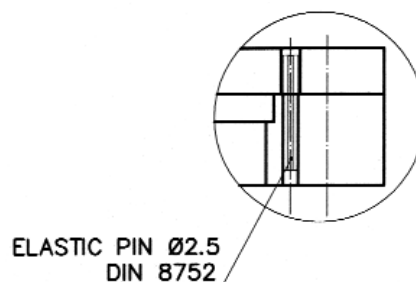
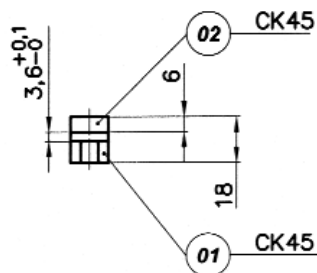
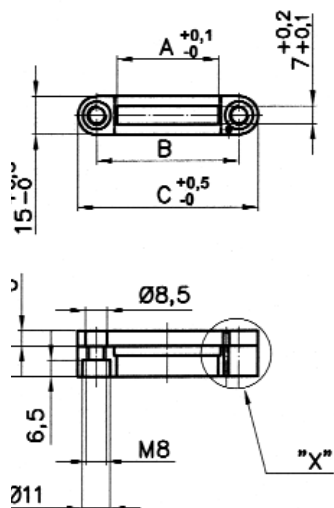
STAMP RETAINER HALTEPLATTE PORTATIMBRI

STOCK



OMCR CODE

A06.12.71



PSA CODE	RENAULT CODE	OMCR CODE	A	B	C	Nr. stamps
P399 391 701	R100 050 232	A06.12.47	16	32	47	4
-	R100 197 803	A06.12.55	24	40	55	6
P399 391 702	R100 050 234	A06.12.63	32	48	63	8
P399 391 703	R100 352 214	A06.12.71	40	56	71	10

E24.59.380.G/EM24.59.500

Ed. 09/2007

Ed. 06/2006

BACKING PLATE DRUCK PLATTE DISTANZIALE

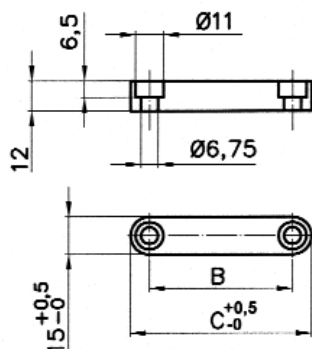
STOCK

Mat.: CK45
800 N/mm²



OMCR CODE

A06.13.71



PSA CODE	RENAULT CODE	OMCR CODE	B	C	Nr. stamps
Z000 151 091	R100 050 235	A06.13.47	32	47	4
-	R100 197 805	A06.13.55	40	56	6
Z000 151 092	R100 050 236	A06.13.63	48	63	8
Z000 151 093	R100 352 230	A06.13.71	56	71	10

**BRACKET
LUFTANSCHLUSSBOCK
STAFFA**

E24.59.920.G

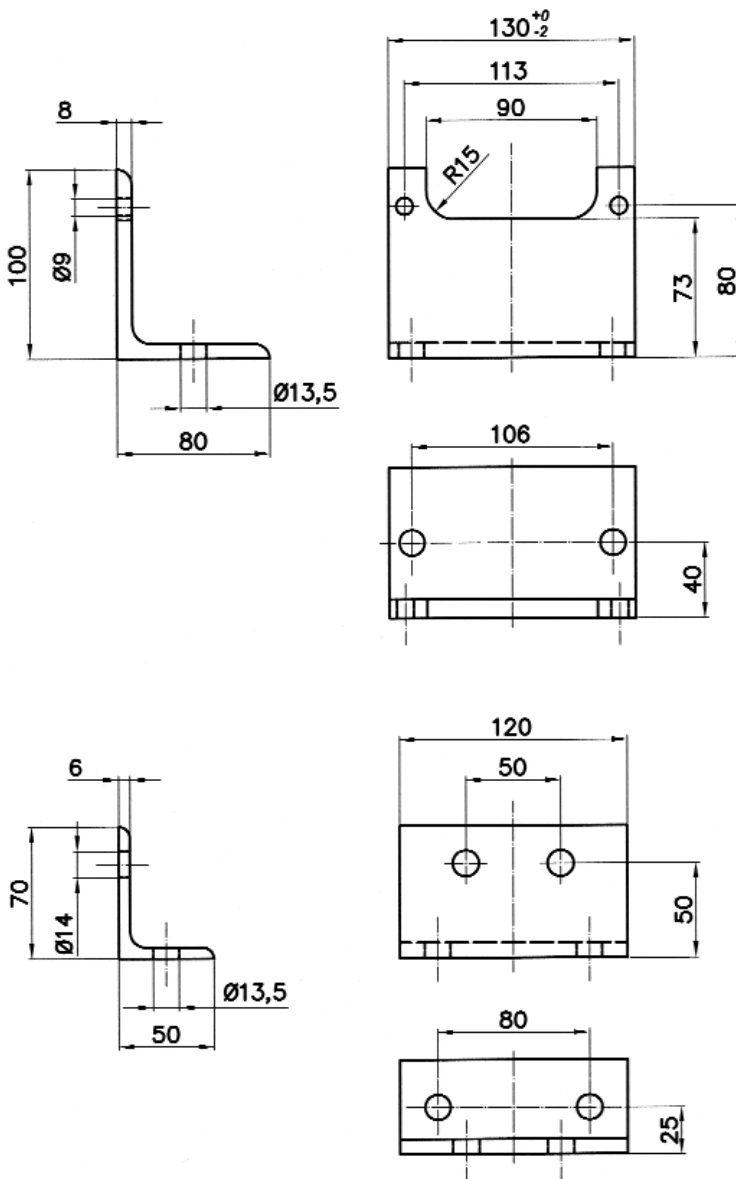
Ed. 09/2007

STOCK

Mat.: Steel



OMCR CODE
A06.18.130100



MABEC CODE OMCR CODE
G858 900 051 A06.18.130100



MABEC CODE OMCR CODE
G858 900 054 A06.18.120070

**SENSOR SUPPORT
HALTERUNG
SUPPORTO SENSORE**

E24.59.960.G

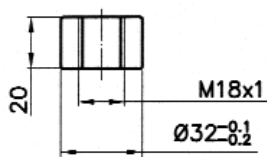
Ed. 05/2004

STOCK

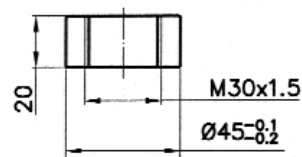
Mat.: CK45



OMCR CODE
A06.15.4530



PSA CODE OMCR CODE
G858 900 077-32 A06.15.3218



PSA CODE OMCR CODE
G858 900 077-45 A06.15.4530



E24.59.960.G

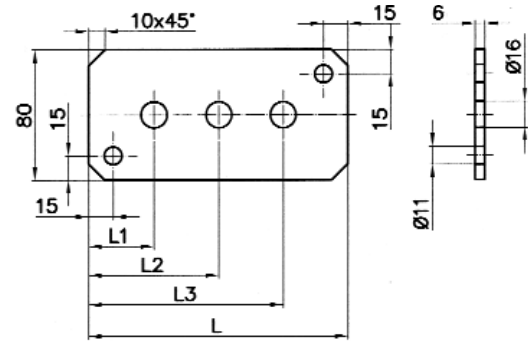
BRACKET BÜGEL STAFFA

Ed. 09/2007

STOCK	Mat.: CK45		OMCR CODE A06.35.80080
-------	------------	---	---------------------------



MABEC CODE	OMCR CODE	L	L1	L2	L3
G858 900 134-1	A06.35.80080	080	40	-	-
G858 900 134-2	A06.35.80120	120		80	-
G858 900 134-3	A06.35.80160	160		-	120



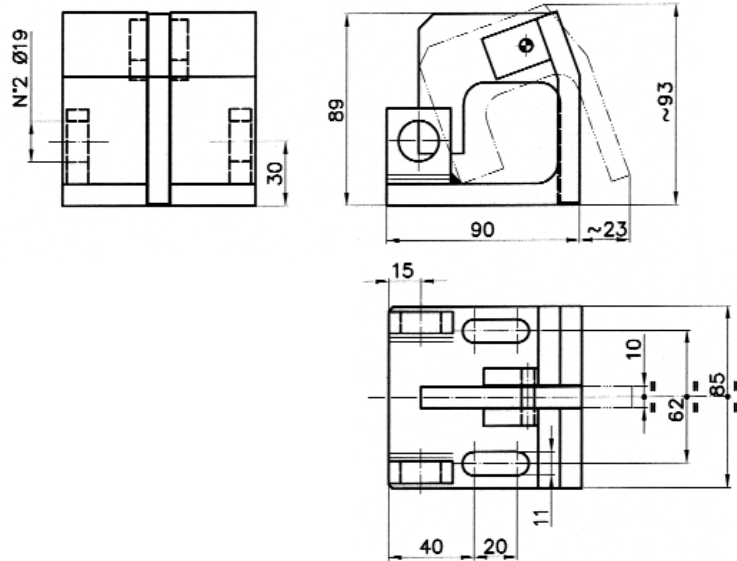
G856 340 010

FRONT GAGE FÜHLERHALTERUNG SUPPORTO SENSORE

STOCK	Mat.: Steel		OMCR CODE A06.16.085089
-------	-------------	---	----------------------------



MABEC CODE	OMCR CODE
G856 340 010	A06.16.085089



G856 699 002÷010

ELASTOMER SPRING PIN AUFNAHMEBOLZEN PERNO PER MOLLE IN ELASTOMERO

STOCK	Mat.: CK45		OMCR CODE A04.12.3842
-------	------------	---	--------------------------



PSA CODE	OMCR CODE	A	B	C	L	H
G856 699 002	A04.12.3842	38	28	14	42	15
G856 699 005	A04.12.3040	30	22	11	40	
G856 699 010	A04.12.2535	25	18	9	35	13

