

Grid visualization software



GridVis[®]

GridVis[®] 7.3

Energy management, power quality, ground fault monitoring (RCM):
visualizing, analyzing, alerting, reporting

Janitza[®]

GridVis®

THREE APPLICATIONS IN A SINGLE SOFTWARE TOOL: ENERGY MANAGEMENT, POWER QUALITY, GROUND FAULT MONITORING (RCM)

GridVis® reveals potential energy savings. In addition, the measured parameters measured can be analyzed to detect possible production stoppages at an early stage and thus to optimize your operating equipment uptime. The scalable, user-friendly software is perfect for building standard-compliant energy, fault monitoring / RCM and power quality monitoring systems.



ENERGY MANAGEMENT (ENMS)

Certified in accordance with ISO 50001. You are on the safe side with Janitza GridVis® when it comes to topics such as energy management.

TRANSPARENCY

Keep track of consumption data and costs. Recognize cost generators as well as problems in the power quality. Discover rising fault currents and overloads. Define key performance figures from consumption and measurement data in line with the specifications of ISO 50006.

NETWORK ANALYSIS & EVALUATION

Analyze and evaluate measurement data. The GridVis® software offers numerous functions, such as statistics, line diagrams, pie charts, heat maps, CBEMA curves, continuous lines, tables, Sankey diagrams, key performance indicators, etc. The functions can be designed intuitively. Measurement data can be analyzed as required by the user.

SAFETY & ALARM MANAGEMENT

Monitor limit values of measured variables, consumption data, residual currents as well as device communication. Reliable alerting via e-mail and the web interface. With Janitza's GridVis® measurement technology and network visualization software, you give your company more reliability and safety.

VISUALIZATION & DOCUMENTATION

Web visualization in line with your needs. Quickly and easily create your own dashboards and overview with a large selection of functions and graphics, without programming skills. Benefit from prepared reports and documentation on the topics of energy management, power quality and residual current monitoring.

OPEN SYSTEM

Regardless of whether it's OPC UA, REST API or CSV, we offer many data import and export options as well as data access options. An open and future-proof system. Third-party devices can be easily integrated via OPC UA or Modbus. No other system offers more connectivity.



- FREE LAYOUT DESIGN
- APPLICATION-ORIENTED FUNCTIONS

- PROFESSIONAL TOOLS FOR EVALUATING ALL MEASUREMENT AND CONSUMPTION DATA

VISUALIZATION

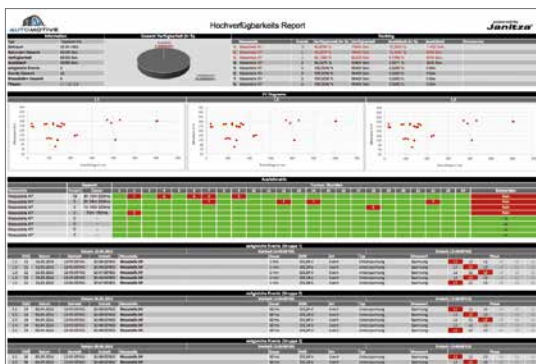
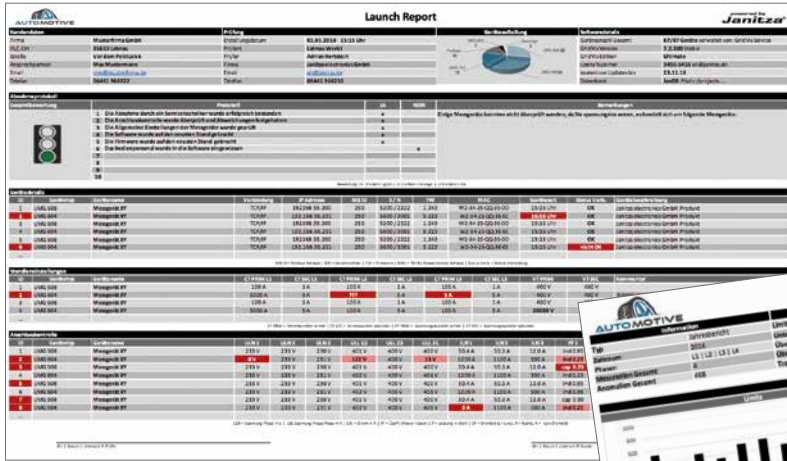
Design your own overviews with numerous functions and graphics

- Professional editor for the creation of dashboards
- Dashboards and templates: free design of overviews
- User management and regulation of access rights
- Numerous widgets and functions: line diagrams, bar charts and pie charts, heat maps, Sankey diagrams, key performance indicators (KPI), tables, indicators, continuous lines, weather, live values, links and much more.

ANALYSIS & EVALUATION

All details in an overview, with our tools for analyzing and evaluating your measurement data

- Result and transient browser
- Graph and graph set functions
- Statistical evaluations
- CBEMA curve
- Continuous line
- Dashboards & widgets
- Ground fault monitoring (RCM) analysis



- XLS AND PDF-OUTPUT
- AUTOMATIC E-MAIL SENDING



- FUTURE-PROOF SOLUTIONS
- OPEN SYSTEM
- THE LATEST TECHNOLOGIES

DOCUMENTATION

Reports optimized for EnMS, power quality and ground fault monitoring (RCM)

- EN 50160 & EN 61000-2-4 evaluation
- High availability analysis as well as statistical analyses
- Results, transients and limit-value violation
- Energy overviews
- Energy billing
- Residual current analysis
- System acceptance

CONNECTIVITY

Data access, data export and import made easy

- OPC UA client and server (optional)
- REST API (M2M solution)
- Modbus third-party devices
- CSV, XLS import & export
- GridVis® Collector (mobile data collector)
- MSCONS (load profile and counter data)
- COMTRADE (transients and events)



- HIGH AVAILABILITY
- RELIABILITY AND SAFETY THROUGH MONITORING
- MEASUREMENT TECHNOLOGY AND MEASURED VALUES UNDER CONTROL



- TIMED TASK MANAGEMENT
- EASY SYSTEM HANDLING THROUGH AUTOMATION FUNCTIONS

ALERTING

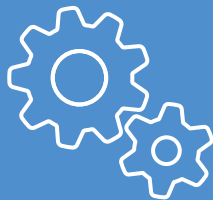
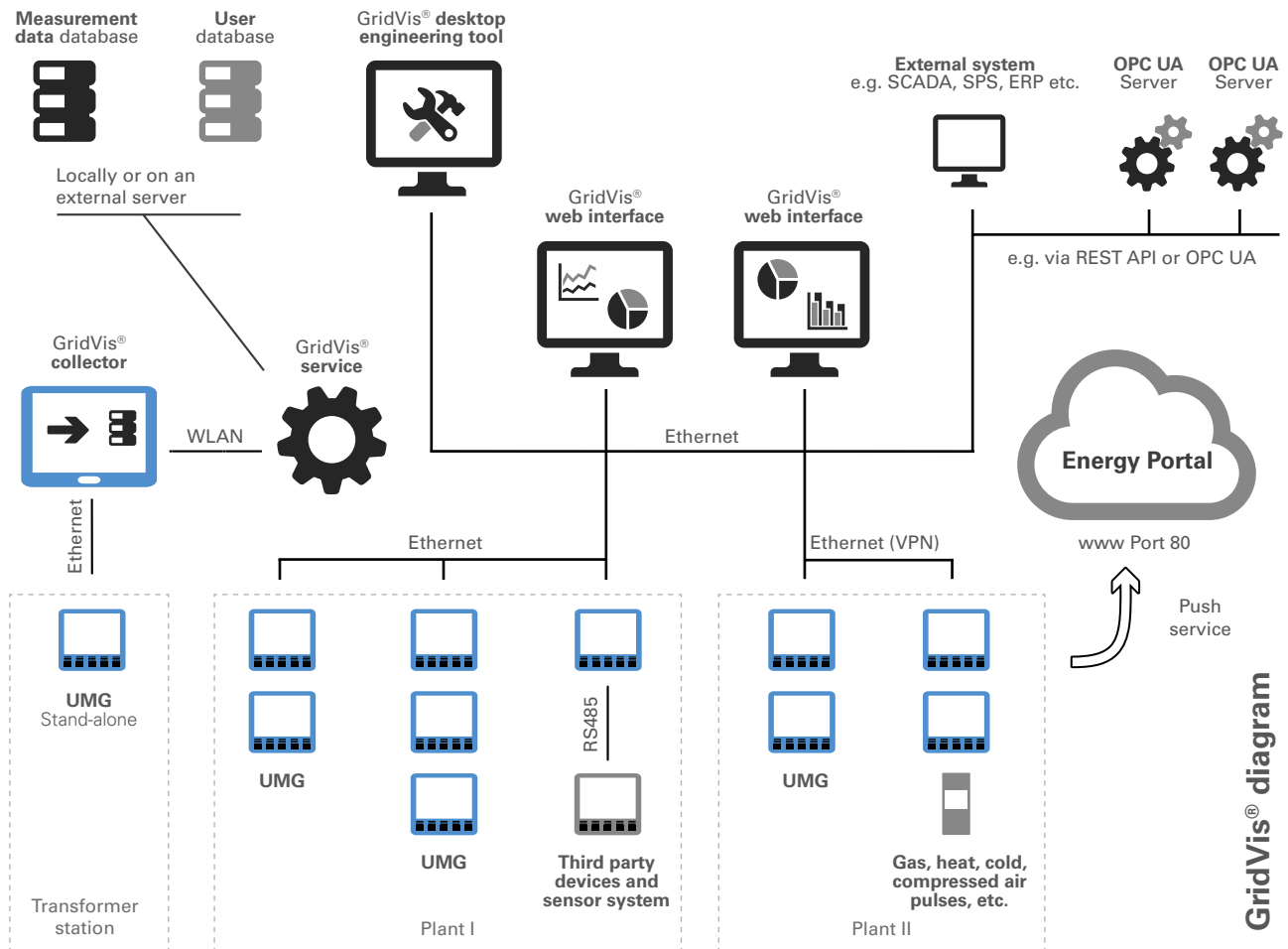
System and energy monitoring at the highest level

- Monitoring communication, limit values and much more
- Alerting via web UI, e-mail or external program
- Acknowledgement requirement with logging & history
- Escalation levels for needs-based alerting
- Full access to measurement data and communication parameters

AUTOMATION

Plan the functions and automate your system

- Planning of device readouts, time synchronization, report creation or e-mail sending
- Automatic data import
- Database management with automation functions
- Shift schedules and rates



OTHER SYSTEM FUNCTIONS

WEB INTERFACE

- Dashboards and widgets
- No local installation required

ENGINEERING TOOL

- Local installation
- Commissioning and parameterization of measuring devices
- Analysis and evaluation

DATABASE

- Jan DB (database in the scope of delivery)
- MySQL (driver) ■ MSSQL (driver)

SERVICE

- Background process
- Operable without registered users

USER ADMINISTRATION & LANGUAGE

- Password protection and access control
- User management
- German, English, Spanish

VIRTUAL MEASUREMENT POINTS & LOGIC

- Measurement points without measuring device
- Mathematic operations

DATA RECORDING & DEVICE CONFIGURATION

- Memory readout
- Online recorder
- Device parameterization

SERVICES



Our support engineers as well as a network of professional solution partners offer you a large range of services. From installation or retrofitting, or the complete commissioning of the entire measurement system, to the power quality analysis by certified experts.

TRUST IN A STRONG PARTNER

Extensive service

Benefit from custom in-house training workshops and seminars and a diverse range of training courses at our training center in Lahnau. Professional consultation and support services are free for GridVis® customers. We will provide you with on-site assistance during your commissioning and offer fair maintenance contracts to ensure optimal system availability. Customized adjustments to reports are possible.

You can rely on a partner with an extensive product portfolio and many years of experience. As a partner with experience and know-how in numerous industries, we can help you to integrate a perfect solution in your company.



GridVis[®] – EDITIONS

THE RIGHT PACKAGE OF FUNCTIONS FOR EVERY REQUIREMENT PROFILE

GridVis[®] – ULTIMATE

51.00.190

Like GridVis[®]– Service, plus:

- Web interface GridVis[®]-Energy
- Enhanced user administration
- Dashboard and template manager
- Widgets
- Key performance indicator evaluation (KPI)
- Sankey diagram (energy flow analysis)
- Device overview with graph function
- NEW starting with version 7.3: OPC UA Client
- NEW starting with version 7.3: Image and symbol library

GridVis[®] – SERVICE

51.00.180

Like GridVis[®]– Professional, plus:

- NEW starting with version 7.3:
Enhanced reports:
 - High availability
 - LET (Limits, Events, Transients)
 - Energy billing
- NEW starting with version 7.3*:
COMTRADE & MSCONS Export
- Service, including REST API
- Online recorder
- Alarm management
- Measurement and consumption data export (CSV)
- Third party devices (generic Modbus)
- Enhanced automation:
 - Reports
 - Database actions
 - E-mail/alerting
 - Cost centers and rate formation

01

GridVis[®]
Ultimate

02

GridVis[®]
Service

GridVis® – PROFESSIONAL

51.00.160

Like GridVis®– Basic, plus:

- Unlimited number of devices and data points
- Database driver (MSSQL, MySQL)
- Automation (readout, time setting, etc.)
- Virtual measuring devices and logic
- User administration

GridVis® – BASIC

51.00.116

Free basic version:

- Maximum of five measuring devices
- Graphs and analysis tools
- Database (Jan-DB)
- Reports:
 - NEW starting with version 7.3:
 - Commissioning report
 - Energy and consumption reports
 - PQ reports (EN 50160, EN 61000-2-4 etc.)
 - Fault monitoring /RCM report



GridVis® 7.3

RELY ON CONNECTIVITY AND A PROFESSIONAL ALERTING ON THE WEB

With GridVis® 7.3, Janitza has expanded the powerful GridVis® to include many interesting functions. Add-on tools (e.g. the OPC UA server and GridVis® Collector), which are not included in the standard functions package, expand your options for data collection and processing.

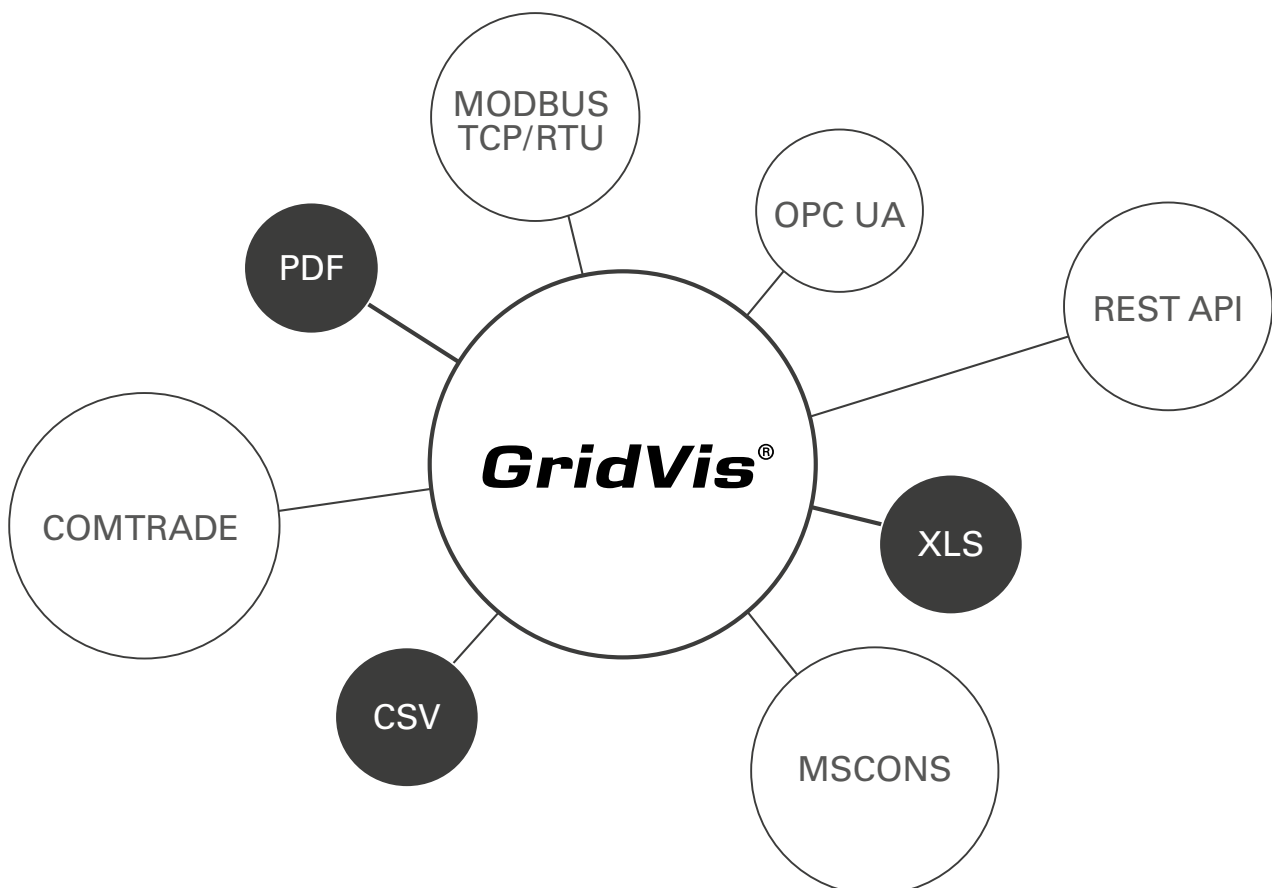
Expanded functions of GridVis® 7.3:

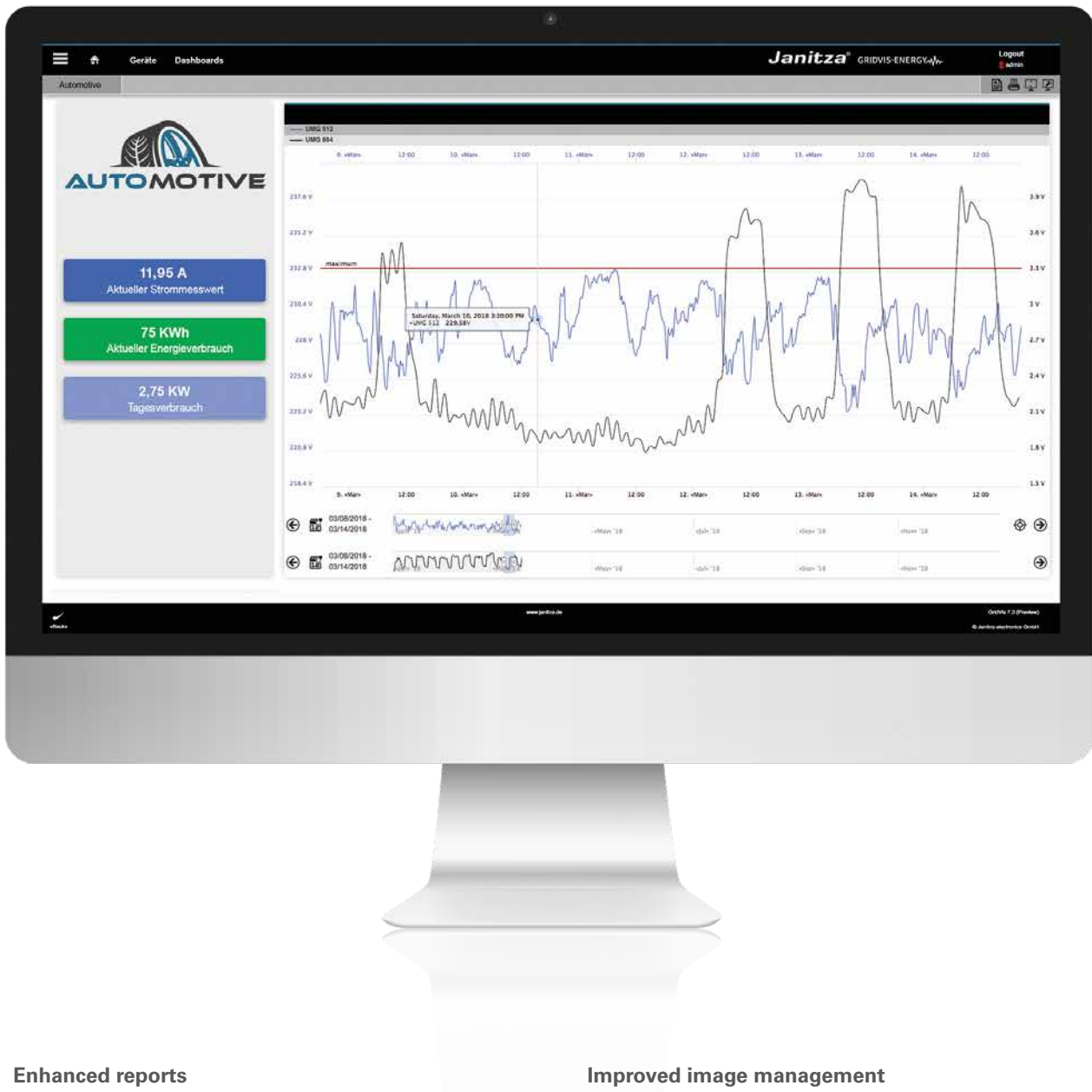
Connectivity

- OPC UA client: fully integrate the OPC UA server in our system, use the values for mathematical operations, key performance indicators or record them with our online recorder.
- COMTRADE export
- MSCONS export

Alarm list in the WEB

- User-friendly and intuitive web interface
- Acknowledgment and history on the web
- Search and filter functions





Enhanced reports

- High availability report – maximum system reliability with statistical evaluation
- LET report – events, transients, limit value violations
- Energy billing calculation – support of price groups, performance values and extra reactive energy, rates
- Commissioning report – acceptance protocol with connection check

Improved image management

- Pre-installed image and symbol library
- Grouping and search function

New line diagram

- Simple and intuitive configuration
- Dual time axis mode
- Limit value line
- Continuous line as a function
- Improved layout design

OPC UA SERVER

INCREASE YOUR CONNECTIVITY

Increase the connectivity with the OPC UA server. In addition to the OPC UA client (part of the GridVis® Edition Ultimate), Janitza offers you an OPC UA server. With the OPC UA server, measured values, key performance indicators and other numerical values can be provided directly to an OPC UA client and processed further. In addition to the direct GridVis® connection, the OPC UA server also offers KNX, SNMP as well as BACnet clients.

The additionally installed server communicates directly with GridVis® and offers online values for all of the devices and functions incorporated in GridVis®. The OPC UA server is not a part of a GridVis® edition. It can be purchased as an option.

We would be happy to create an offer for you. The prices are based on the required data points.

OPC UA Server 250	item no. 51.00.151
OPC UA Server 1000	item no. 51.00.152
OPC UA Server 2500	item no. 51.00.153
OPC UA Server 10000	item no. 51.00.154



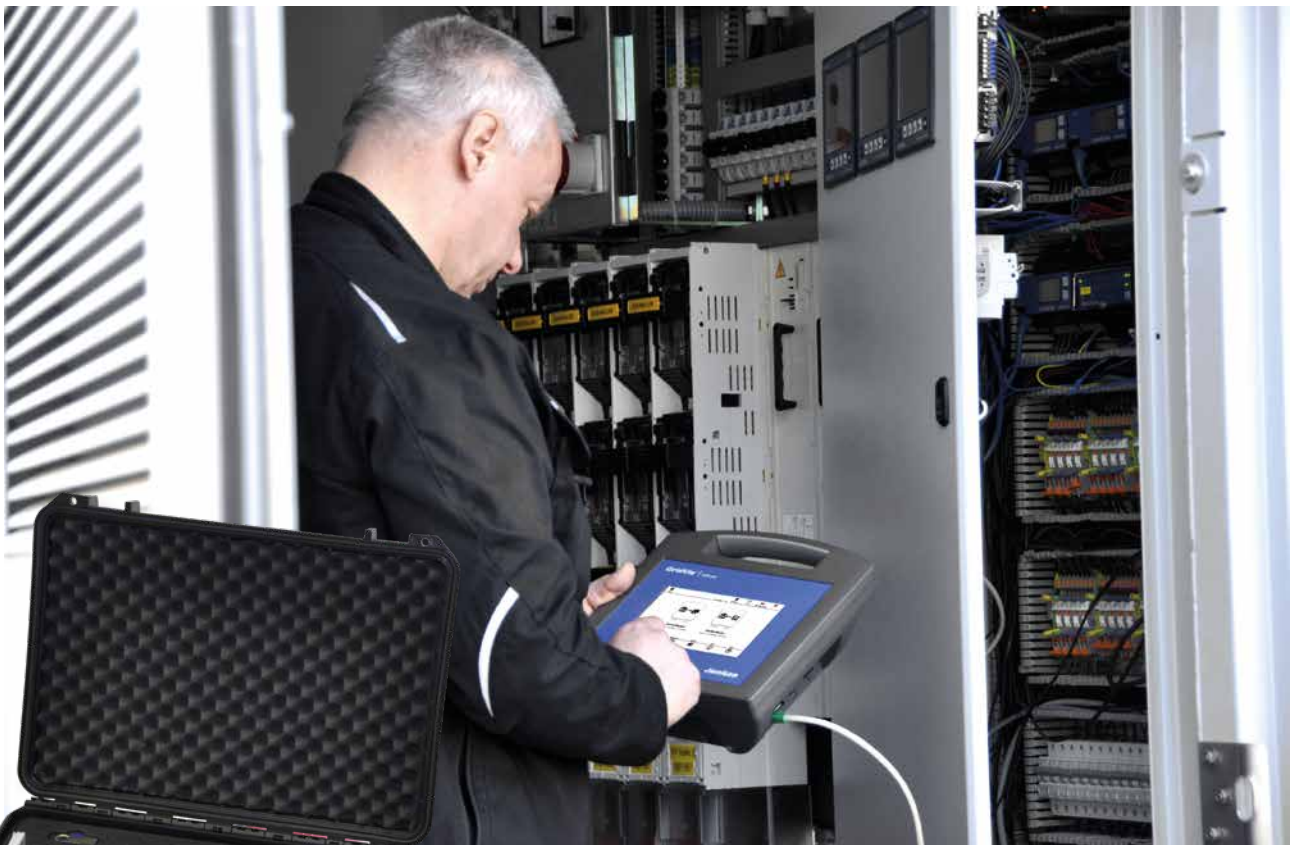
GridVis® COLLECTOR

MOBILE DATA READOUT

As a mobile unit, the GridVis® Collector makes it possible to read out measurement data from Janitza measurement devices on site without a communication connection. This data can be compared and evaluated in a project with other measurement points. With a battery runtime of up to 9 hours, the GridVis® Collector can manage up to 200 measuring devices. The handling is easy to understand and can be done by a qualified electrician in just a few easy steps.

The synchronization of measurement data with a locally installed GridVis® can be done via Ethernet or WLAN.

The GridVis® Collector offers the ideal solution for collecting measurement data in local network stations or other autonomous electrical distribution systems, which do not have a wireless or network connection.



GridVis® Collector
Item no. 51.00.400

The GridVis® Collector is not part of a GridVis® edition and can be purchased as an option.



Janitza electronics GmbH
Vor dem Polstück 6 | 35633 Lahnau
Germany

Phone: +49 6441 9642-0
Fax: +49 6441 9642-30
info@janitza.de | www.janitza.com

Sales partner

Item no.: 33.03.645 • Doc. no.: 2.500.012.3 • 04/2018 • Subject to technical alterations.
The latest version of the brochure is available at www.janitza.com.