

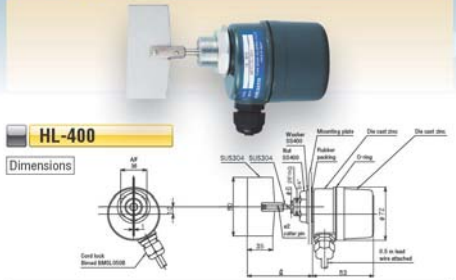
# Super Compact Paddle Type Level Switch

## Standard Specifications

Power supply voltage	100/110 VAC 50/60 Hz 200/220 VAC 50/60 Hz *Made-to-order Other voltages are also available.
Connection	Threaded attachment G 3/4"
Power consumption	1.5 W
Contact output	1C contact 250 VAC 5 A (resistive load)
Detection torque	Approx. 4.9 N-cm
Slip torque	11.76 to 14.70 N-cm
Revolutions	1 RPM

Material	Main unit case & flange Shaft & paddle Seal	Die cast zinc SUS 304 Nitrile rubber/silicone rubber (heat-resistant model)
Operating temperature	Inside tank: Max. 60°C Outside tank: Max. 55°C	
Operating pressure	Inside tank: 0 to 30 kPa	
Paint color	Munsell 7.5BG 4/1.5	
Lead wire	VCT 0.75 mm <sup>2</sup> core 500 mm lead wire attached (Models with extended lead wire also available)	

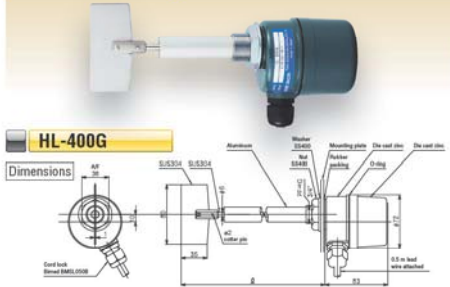
## Basic Type



This is our most commonly used standard model. It can be used in a wide range of applications such as for high or low level detection in small hoppers.

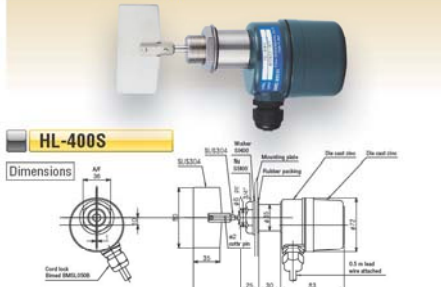
Available lengths for dimension L are 85, 100, or 135 mm.

## Protective Tube Type



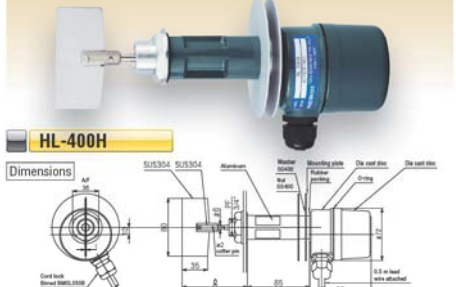
Has a longer length for dimension L than the standard type and comes with a protection tube to maintain shaft strength. Available with four lengths of dimension L. Available lengths for dimension L are 150, 200, 250, or 300 mm.

## Stainless Steel Type



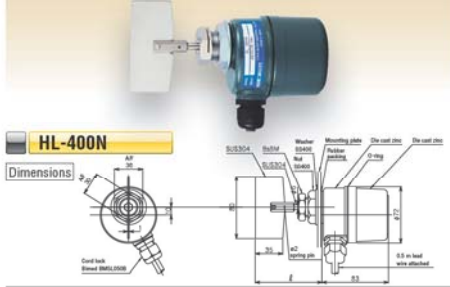
Parts that come into contact with powder are made of stainless steel. Ideal for hoppers in food handling applications. Available lengths for dimension L are 85, 100, or 135 mm.

## Heat-resistant Type



Heat-resistant model able to withstand temperatures of up to 100°C inside tank. For maximum heat-resistance of 150°C, select model number HL-400HH. Available lengths for dimension L are 150, 200, 250, or 300 mm.

## Detachable Shaft Type



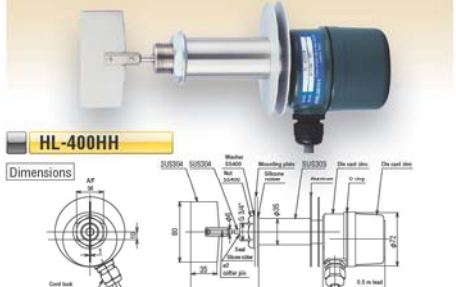
This type allows the paddle, shaft, and attachment nut to be separated from the main unit. The paddle is secured using a roll pin, making it ideal for situations where there are concerns about using a cotter pin. Available lengths for dimension L are 85, 100, or 135 mm.

## Heat-resistant Protective Tube Type



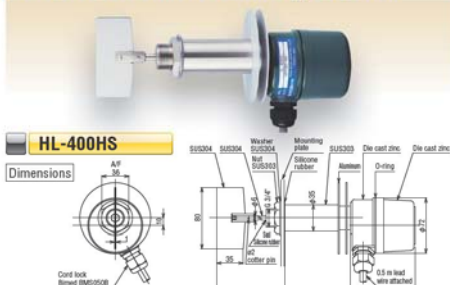
Protection tube type with long length for dimension L, with heat-resistance up to 100°C. Available lengths for dimension L are 150, 200, 250, or 300 mm.

## High-temperature Heat-resistant Type



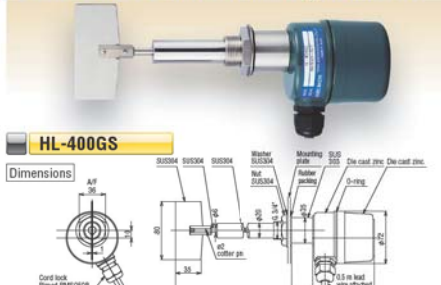
Heat-resistant model able to withstand temperatures of up to 150°C inside tank. Available lengths for dimension L are 85, 100, or 135 mm.

## Heat-resistant Stainless Steel Type HL-400HS



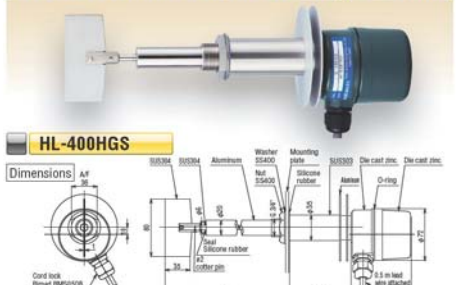
Heat-resistant model able to withstand temperatures of up to 100°C inside tank. Parts that come into contact with powder are made of stainless steel. Available lengths for dimension L are 85, 100, or 135 mm.

## Stainless Steel Protection Tube Type HL-400GS



Model with long length for dimension L. Parts that come into contact with powder are made of stainless steel. Available lengths for dimension L are 150, 200, 250, or 300 mm.

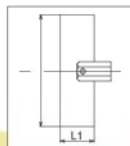
## Heat-resistant Protection Tube Stainless Steel Type HL-400HGS



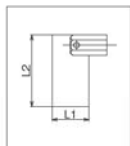
Model with long length for dimension L. High-temperature model able to withstand temperatures of up to 100°C. Parts that come into contact with powder are made of stainless steel. Available lengths for dimension L are 150, 200, 250, or 300 mm.

## Optional Paddle Sizes

Double-bladed paddle - V paddle	
L1 x L2	Material
60 x 150	Aluminum
60 x 200	Aluminum



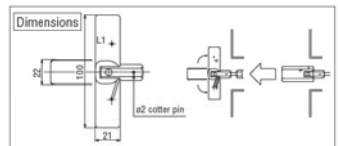
Single-bladed paddle - S paddle	
L1 x L2	Material
35 x 60	SUS 304
35 x 80	SUS 304



## Folding paddle - F Type

L1 x L2	Material
21 x 100	SUS 304

Paddle width when folded for insertion: 22 mm  
Dimension L2 when paddle is deployed (paddle width): 100 mm



Standard HL-400 series paddles are 35 x 80 mm.

Other paddle sizes are available. Specify L1 and L2 dimensions when ordering.

The minimum dimensions of the width of HL-400 series paddles (L1) is 35 mm. Narrower paddles are not available. (Restriction does not apply to folding paddles)