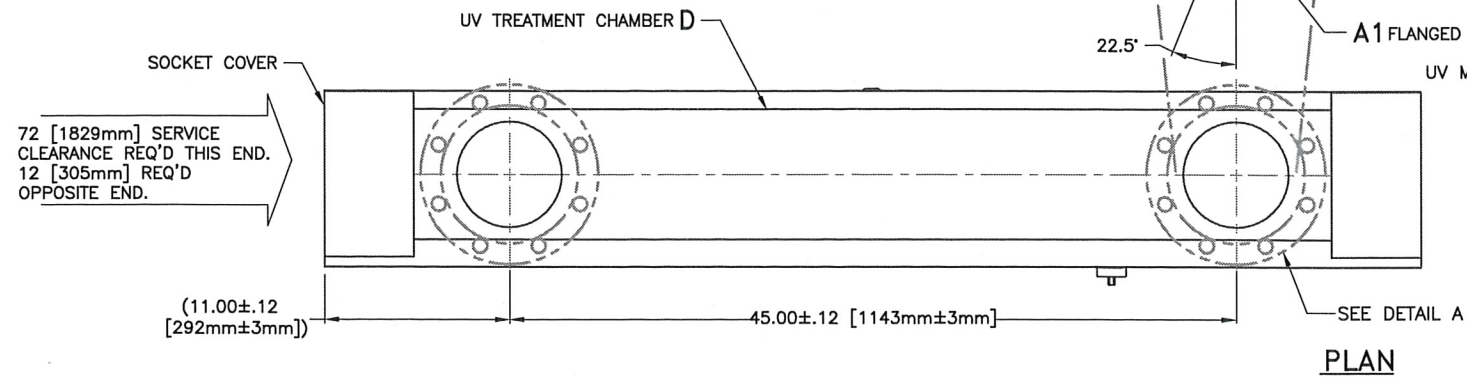
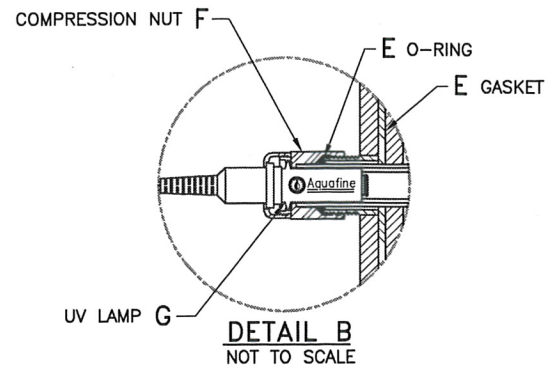


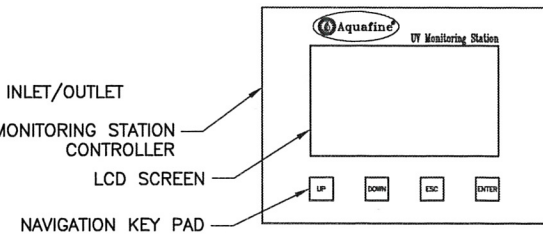
This drawing contains proprietary information of Aquafine Corporation. By accepting this drawing the recipient agrees that this drawing will not be used, reproduced in whole or in part, or its contents revealed to others, except to meet the purposes for which it was delivered. It is understood that no right is conveyed to reproduce or to have reproduced any item herein disclosed without express permission from Aquafine Corporation

REV.	DESCRIPTION	BY	DATE
A2	RELEASE #2	C.F.	5/12/15



DETAIL A
UNIT SHOWN IN FLANGED OPTION

VIEW SHOWN IN TRI-CLAMP OPTION

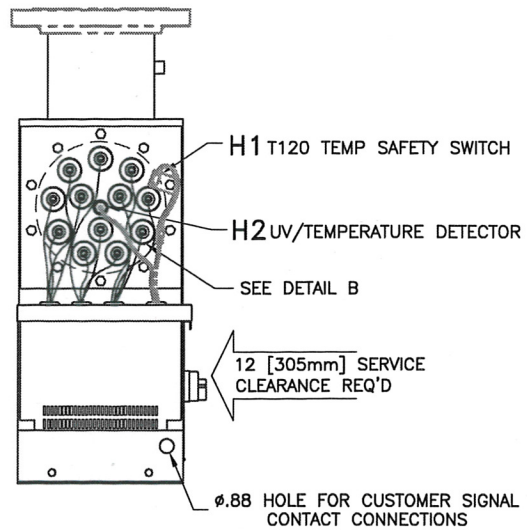


DETAIL C
NOT TO SCALE

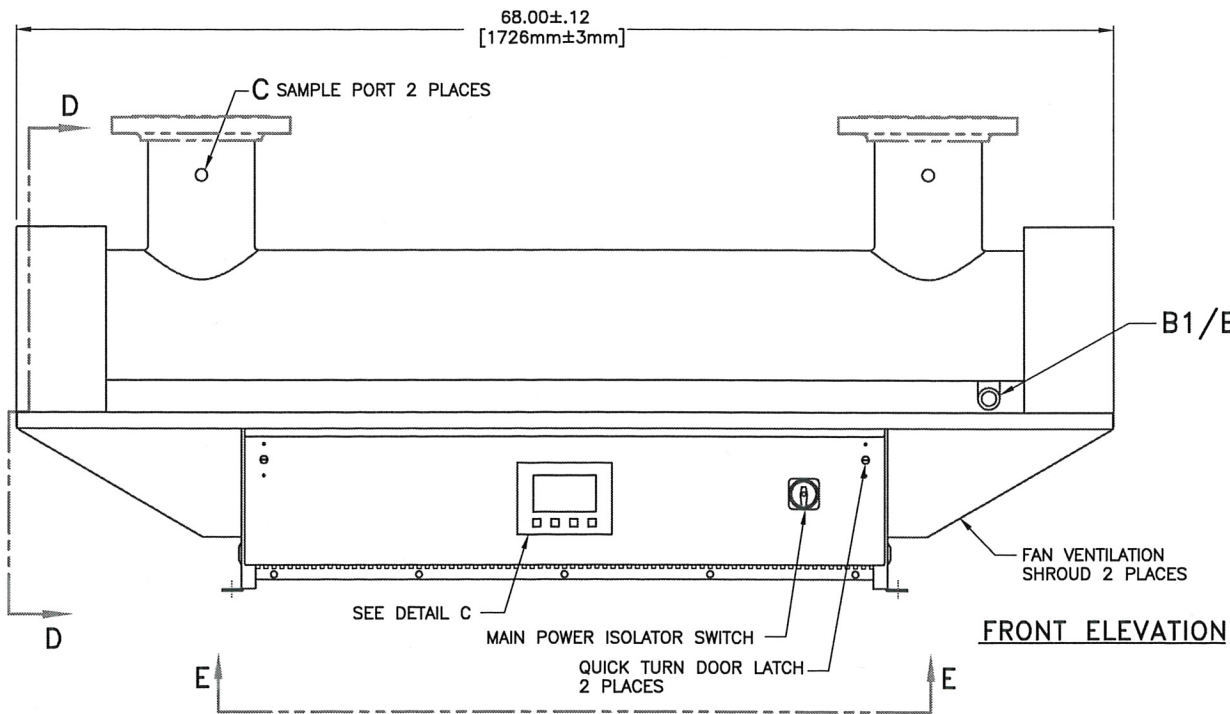
BASE MODEL FEATURES:
LAMP OPERATIONAL STATUS DISPLAY
SYSTEM RUNNING TIME HOUR
LAMP LIFE CYCLE HOUR
HIGH TEMPERATURE SHUTDOWN ALARM—H1
BASE + REMOTE MONITORING FEATURES:
REMOTE POWER START/STOP
LAMP OUT ALERT ALARM

BASE/REMOTE + UV MONITORING FEATURES:
UV INTENSITY DISPLAY
LOW UV ALARM
UV ALARM SET POINT
ANALOG OUTPUT SIGNAL 4–20 mA
ANALOG OUTPUT SIGNAL 0–1 VDC
BASE/REMOTE + NIST UV MONITORING FEATURES:
NIST TRACEABLE CERTIFIED UV INTENSITY DISPLAY

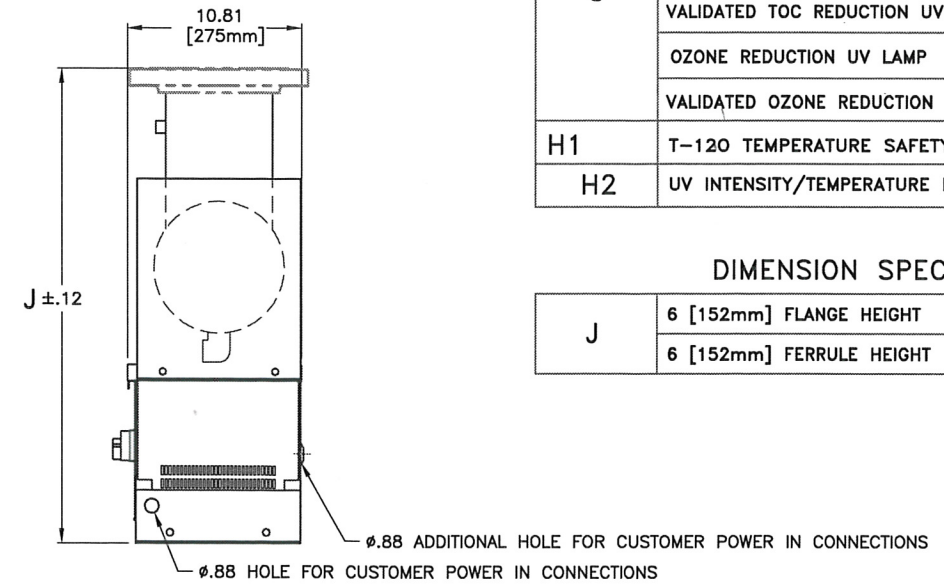
H2 SEE NOTE 2



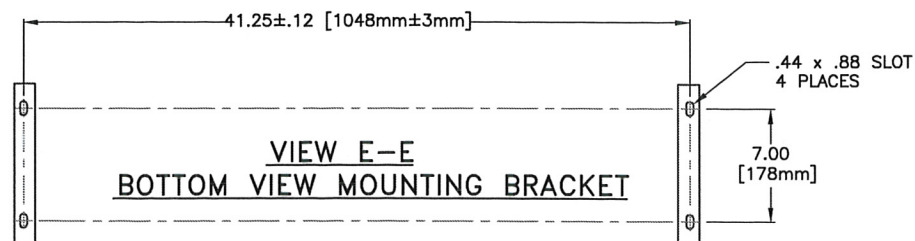
SECTION D-D



FRONT ELEVATION



SIDE ELEVATION



VIEW E-E
BOTTOM VIEW MOUNTING BRACKET

CUSTOMER CONNECTIONS

A1	6 [152mm] RAISED FACE FLANGE	STANDARD
B1	3/8 NPT FEMALE ELBOW	EQUIPPED W/ A1
C	1/4 NPT COUPLING	EQUIPPED W/ A1
A2	6 [152mm] TRI-CLAMP FERRULE	OPTIONAL
B2	1 [25mm] SANITARY TRI-CLAMP FERRULE	EQUIPPED W/ A2


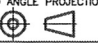
OPTIONAL FEATURES

D	UV CHAMBER INTERNAL RA32 FINISH	STANDARD
	UV CHAMBER INTERNAL RA15 FINISH	OPTIONAL
E	EPDM O-RINGS & GASKETS	STANDARD
	VITON O-RINGS & GASKETS	OPTIONAL
	SILICONE O-RINGS & GASKETS	OPTIONAL
F	CPVC COMPRESSION NUT	STANDARD
	STAINLESS STEEL COMPRESSION NUT	OPTIONAL
G	DISINFECTION UV LAMP	STANDARD
	VALIDATED DISINFECTION UV LAMP	OPTIONAL
	TOC REDUCTION UV LAMP	OPTIONAL
	VALIDATED TOC REDUCTION UV LAMP	OPTIONAL
	OZONE REDUCTION UV LAMP	OPTIONAL
	VALIDATED OZONE REDUCTION UV LAMP	OPTIONAL
H1	T-120 TEMPERATURE SAFETY SWITCH	STANDARD
H2	UV INTENSITY/TEMPERATURE DETECTOR	OPTIONAL

DIMENSION SPECIFICATION

J	6 [152mm] FLANGE HEIGHT	29.25 [743mm]
	6 [152mm] FERRULE HEIGHT	29.25 [743mm]

NOTES: 1. 12R60 UNIT SHOWN IN FLANGED OPTION.
2. H2 DETECTOR REPLACES H1 SWITCH, CONSOLIDATING UV AND TEMPERATURE MONITORING.

DIMENSIONS ARE IN INCHES PER ASME Y14.5-1994 UNLESS OTHERWISE SPECIFIED DO NOT SCALE DWG.			DRAWN BY FIORELLO		DATE 3/18/15		 Aquafine Corporation 29010 AVENUE PAINE VALENCIA, CA. 91355-4198 U.S.A.	
TOLERANCES UNLESS OTHERWISE SPECIFIED FRACTIONS DECIMALS ANGLES ± 1/32 .XX ± .03 ± 0.5° .XXX ± .015			CHECK Vik J 05.18.15 FIORELLO		DATE 05.18.15			
THIRD ANGLE PROJECTION 			APPROVED AS		DATE 5/18/15			
REFERENCE			SCALE 1/6		SHT 1 OF 1		DWG. NO. GO-37207-5	REV. A2