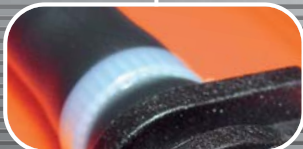


dynamik

digital multifunction peristaltic dosing pumps



innovation > technology > future

The Innovation for your dosing needs



Microprocessor technology

The entire line uses microprocessor technology for precise and reliable control over time



Easy and intuitive display

Luminous display for visualizing parameters consists of 4 digits, the first green and the others red. The green digit indicates the menu page and the 3 red digits indicate the value of the parameter being programmed



Transaxle Technology

Provides support and stability to the driveshaft, making the roller pressure on the squeeze tubes more uniform. This results in a longer lifetime of the motor and the squeeze tubes



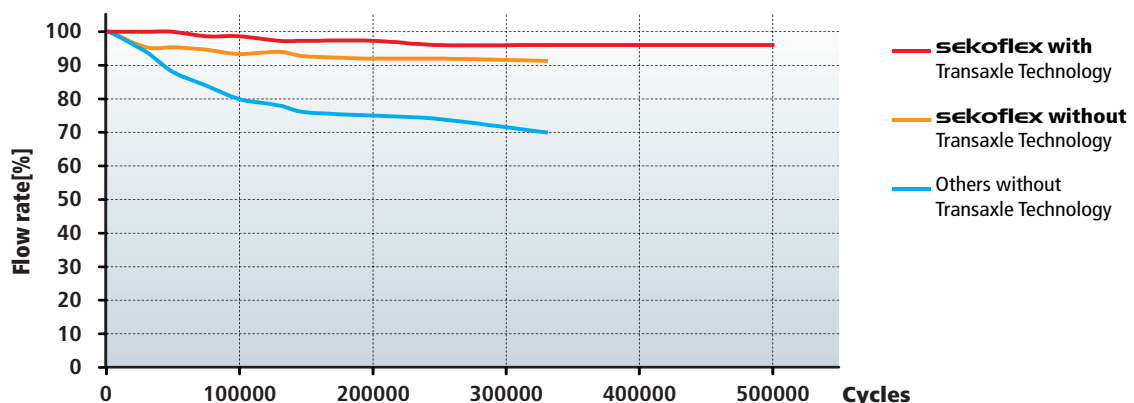
sekoflex and sekobril squeeze tubes

Innovative materials

- Guarantee high compatibility with chemical products
- Keep the pump's flow rate constant even after many hours of operation

New construction technology

- **sekoflex** and **sekobril** squeeze tubes are made to ensure a constant ratio between the internal and external diameter along the entire length of the squeeze tube
- The squeeze tubes are made using modern allow technologies that permit correct fiber positioning, to guarantee that the squeeze tubes are very reliable, mechanically and chemically resistant



dynamik

digital multifunction peristaltic dosing pumps

Precise programming of speed, time or conductivity value thanks to **microprocessor technology**

Improved lifetime of squeeze tube and motor thanks to the **Transaxle Technology** and to **new** technology of squeeze tubes



*rugged,
precise and long life*

Product versions



Easy to install

Thanks to convenient wall fixing brackets



Squeeze tube replacement

does not require pump starting, special tools or qualified personnel



Detergent

DR

Peristaltic pump with digital timing and dosing speed adjustment

Designed to be used on all single-tank dishwashers with one or two solenoid valves

Volumetric/Timed dosing mode:

Pumps dosing starts at set speed when a signal is detected and stops when the set dosing time finishes

Power supply

from 90 to 265 Vac 50-60 Hz
24 Vac 50-60 Hz upon request

Power consumption

3.5 W

Dosing time

from 0 to 999 s

Variable speed

from 10 to 100% V max

CR

Fixed speed peristaltic pump with digital dosing adjustment by conductivity probe

Designed to be used on all single-tank or tunnel dishwashers

Programming allows the setting of conductivity that corresponds to the desired concentration of detergent. The pump can also detect a lack of water.

Power supply

from 90 to 265 Vac 50-60 Hz
24 Vac 50-60 Hz upon request

Power consumption

3.5 W

Rinse Aid

SR

Peristaltic pump with digital timing and dosing speed adjustment

Designed to be used on all single-tank or tunnel dishwashers with one or two solenoid valves

Volumetric/Timed dosing mode:

Pumps dosing starts at set speed when a signal is detected and stops when the set dosing time finishes

Power supply

from 90 to 265 Vac 50-60 Hz
24 Vac 50-60 Hz upon request

Power consumption

3.5 W

Dosing time

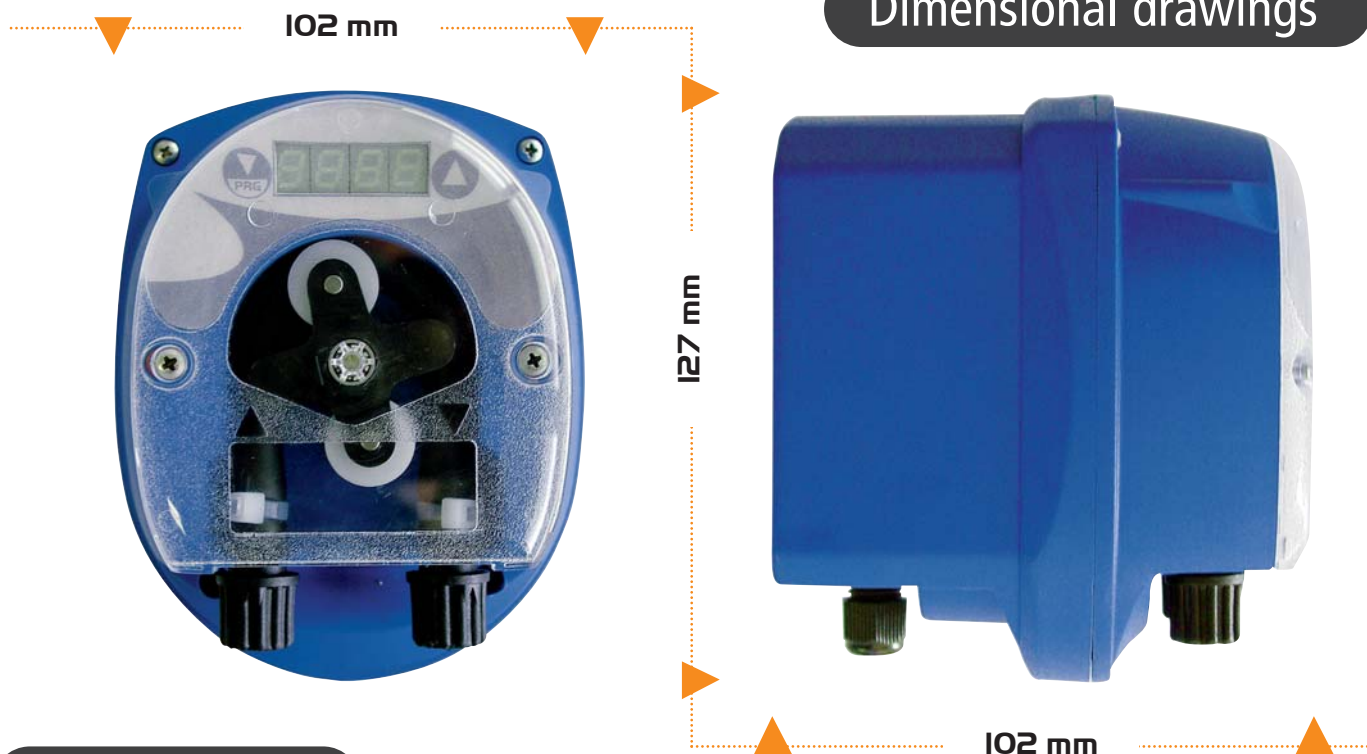
from 0 to 999 s

Variable speed

from 10 to 100% V max

Technical features

Dimensional drawings



Main features

Power Supply	from 90 to 265 Vac 50-60 Hz (24 Vac 50-60 Hz upon request) 230 Vac 50-60 Hz (24 Vac 50-60 Hz upon request) only for NPE						
Chemicals	Detergent				Rinse Aid		
Squeeze tubes	sekoflex 6x10				sekobril 3x8		
CC/round	2,7				0,6		
dynamik (digital version) Flow Rates	DR		CR		SR		
	0.7...7 lt/h 1...10 lt/h		7 lt/h 10 lt/h		0.1...1lt/h		
dynamik (analog version) Flow Rates	NPE	NPR	NPA	NRT	NPE	NPR	NPM
	1.5 lt/h 3 lt/h	0.6...4 lt/h 1.2...7 lt/h	6 lt/h 9 lt/h	6 lt/h 9 lt/h	0.4 lt/h	0.2...1 lt/h	0.4 lt/h 1.5 lt/h
Max working pressure	0.1 bar				3 bar		
Weight	1 Kg						
Inlet-Outlet connection	4 mm x 6 mm						

IP 65 enclosure

Made of PP reinforced with glass fiber so that it is extremely water and dust proof.

seko's construction technology continues to provide products with high resistance to impacts and the chemical agents.

Electrical class 2

Making a ground cable connection unnecessary.

Materials

The entire range is made using fire-retardant materials according to the **RoHS** directive (Restriction of Hazardous Substances Directive).

Wide range of options

All pumps can be supplied with the possibility of connecting a level probe, acoustic alarm and priming by means of a switch



seko

SEKO Asia Pacific **SINGAPORE** • SEKO China **CHINA** • SEKO do Brasil **BRAZIL** • SEKO Dosing Systems **USA** • SEKO Deutschland **GERMANY** • SEKO France **FRANCE** • SEKO Iberica **SPAIN** • SEKO Italia **ITALY** • OOO SEKO **RUSSIA** • SEKO Northern Europe **DENMARK** • SEKO SIETA **ROMANIA** • SEKO Southern Africa **SOUTH AFRICA** • SEKO UK **UNITED KINGDOM**

www.seko.com

BRO DYNUK 071
 Technical data can be change without warning. Pictures and technical drawings are indicative only