

# 穿墙式接线端子系列(Feed-through Terminal Blocks)



QCTB4



QCTB4V

Element width=8.1 mm

Element width=8.1 mm

## 技术参数(Technical data)

根据IEC/DIN VDE标准确定的技术参数  
(Technical data in accordance with IEC/DIN VDE)

额定负载 (Rated Voltage) [V] / [A]  
(Rated Current)

耐受电压(Rated surge voltage) [KV]

刚性导线(Solid) [mm<sup>2</sup>]

柔性导线(Stranded) [mm<sup>2</sup>]

剥线长度(Stripping length) [mm]

螺钉类型(Screw)

扭矩(Torque) [Nm]

绝缘材料(Insulation material)

使用温度(Operating temperial) °C

穿越壳体的厚度(Thick housing panels) [mm]

快速标记条(Zack marker strip)

E304128

E304128

400V / 40A

400V / 40A

4000V

4000V

0.2-6

0.2-6

0.2-4

0.2-4

9

9

M3

M3

0.6

0.6

PA66 / V0

PA66 / V0

-40°C ~ 120°C

-40°C ~ 120°C

Metal walls:1 to 2.5 (400V)

Metal walls:1 to 2.5 (400V)

Metal walls over:2.5 to 4 (250V)

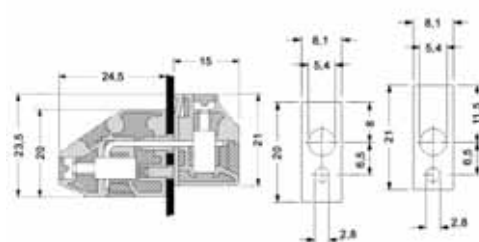
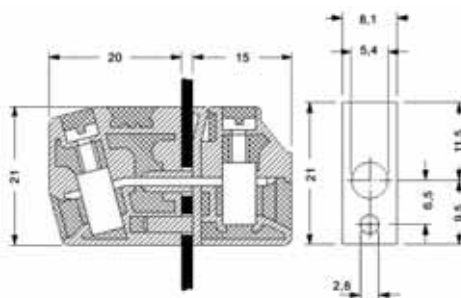
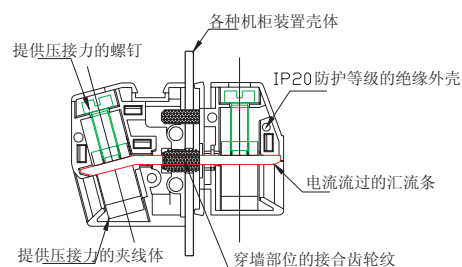
Metal walls over:2.5 to 4 (250V)

Plastic walls:1 to 4 (400V)

Plastic walls:1 to 4 (400V)

QB-8

QB-8



# (Feed-through Terminal Blocks) 穿墙式接线端子系列



QCTB4-CP



QCTB6

Element width=10.0 mm

Element width=10.0 mm

## 技术参数(Technical data)

根据IEC/DIN VDE标准确定的技术参数  
(Technical data in accordance with IEC/DIN VDE)

额定负载 (Rated Voltage) [V] / [A]  
(Rated Current)

耐受电压(Rated surge voltage) [KV]

刚性导线(Solid) [mm<sup>2</sup>]

柔性导线(Stranded) [mm<sup>2</sup>]

剥线长度(Stripping length) [mm]

螺钉类型(Screw)

扭矩(Torque) [Nm]

绝缘材料(Insulation material)

使用温度(Operating temperial) °C

穿越壳体的厚度(Thick housing panels) [mm]

快速标记条(Zack marker strip)

**E304128**

500V / 32A

4000V

0.2-6

0.2-4

8

M3

0.6

PA66 / V0

-40°C ~ 120°C

Metal walls:1 to 2.5 (500V)  
Metal walls over:2.5 to 4 (300V)  
Plastic walls:1 to 4 (600V)

QB-10

**E304128**

500V / 57A

4000V

0.2-10

0.2-6

9

M4

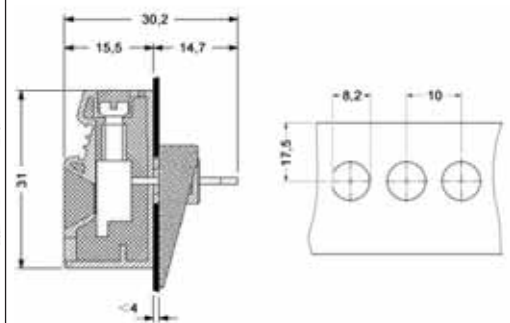
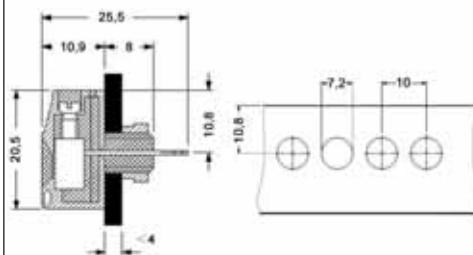
1.5

PA66 / V0

-40°C ~ 120°C

Metal walls:1 to 2.5 (500V)  
Metal walls over:2.5 to 4 (300V)  
Plastic walls:1 to 4 (600V)

QB-10



# 穿墙式接线端子系列 (Feed-through Terminal Blocks)



QCTB10

QCTB10V

Element width=10.1 mm

Element width=10.1 mm

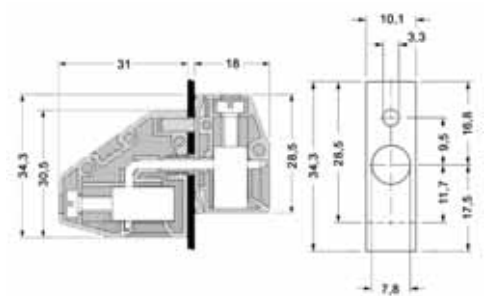
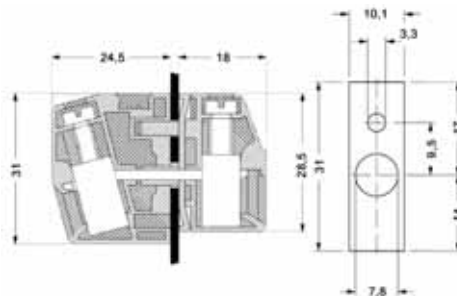
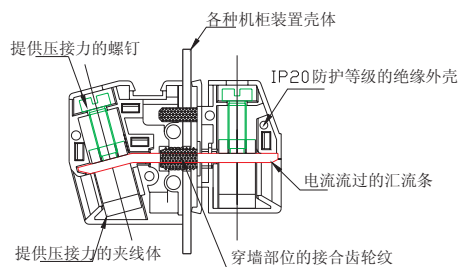
## 技术参数(Technical data)

**E304128** CE:C4M20501-0082-E-16

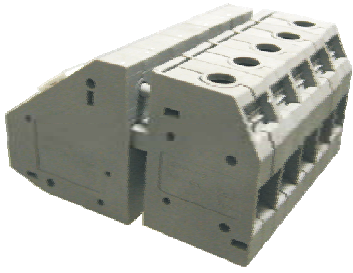
**E304128** CE:C4M20505-B40E-16

根据IEC/DIN VDE标准确定的技术参数  
(Technical data in accordance with IEC/DIN VDE)

额定负载 (Rated Voltage) [V] / [A] (Rated Current)	600V / 75A	600V / 75A
耐受电压(Rated surge voltage) [KV]	3000V	3000V
刚性导线(Solid) [mm <sup>2</sup> ]	0.2-16	0.2-16
柔性导线(Stranded) [mm <sup>2</sup> ]	0.2-10	0.2-10
剥线长度(Stripping length) [mm]	11	11
螺钉类型(Screw)	M4	M4
扭矩(Torque) [Nm]	1.2	1.2
绝缘材料(Insulation material)	PA66 / V0	PA66 / V0
使用温度(Operating temperial) °C	-40°C ~ 120°C	-40°C ~ 120°C
穿越壳体的厚度(Thick housing panels) [mm]	Metal walls:1 to 2.5 (400V) Metal walls over:2.5 to 4 (250V) Plastic walls:1 to 4 (500V)	Metal walls:1 to 2.5 (400V) Metal walls over:2.5 to 4 (250V) Plastic walls:1--4 (500V)
快速标记条(Zack marker strip)	QB-10	QB-10



# (Feed-through Terminal Blocks) 穿墙式接线端子系列



QCTB16



QCTB16V

Element width=12.1 mm

Element width=12.1 mm

## 技术参数(Technical data)

根据IEC/DIN VDE标准确定的技术参数  
(Technical data in accordance with IEC/DIN VDE)

额定负载 (Rated Voltage) [V] / [A]  
(Rated Current)

**E304128**

**E304128**

600V / 100A

600V / 100A

耐受电压(Rated surge voltage) [KV]

4000V

4000V

刚性导线(Solid) [mm<sup>2</sup>]

0.2-25

0.2-25

柔性导线(Stranded) [mm<sup>2</sup>]

0.2-16

0.2-16

剥线长度(Stripping length) [mm]

16

16

螺钉类型(Screw)

M5

M5

扭矩(Torque) [Nm]

2

2

绝缘材料(Insulation material)

PA66 / V0

PA66 / V0

使用温度(Operating temperial) °C

-40°C ~ 120°C

-40°C ~ 120°C

穿越壳体的厚度(Thick housing panels) [mm]

Metal walls:1 to 2.5 (500V)

Metal walls:1 to 2.5 (500V)

Metal walls over:2.5 to 4 (300V)

Metal walls over:2.5 to 4 (300V)

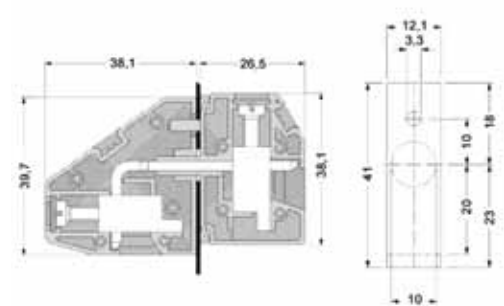
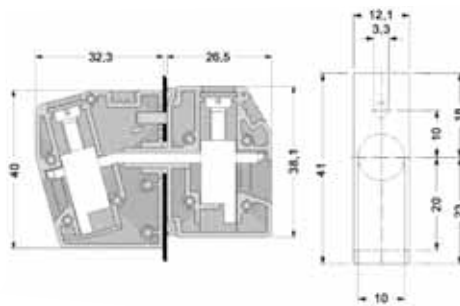
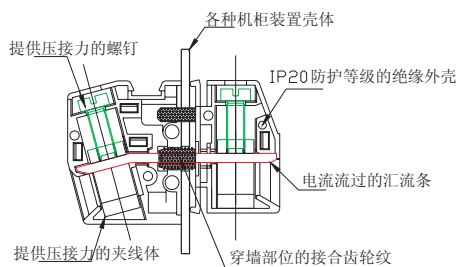
Plastic walls:1 to 4 (600V)

Plastic walls:1 to 4 (600V)

快速标记条(Zack marker strip)

QB-12

QB-12



# 穿墙式接线端子系列(Feed-through Terminal Blocks)



QCTB25



QCTB25V

Element width=15.1 mm

Element width=15.1 mm

## 技术参数(Technical data)

根据IEC/DIN VDE标准确定的技术参数  
(Technical data in accordance with IEC/DIN VDE)

额定负载 (Rated Voltage) [V] / [A]  
(Rated Current)

**E304128**

500V / 125A

**E304128**

500V / 125A

耐受电压(Rated surge voltage) [KV]

4000V

4000V

刚性导线(Solid) [mm<sup>2</sup>]

6-35

6-35

柔性导线(Stranded) [mm<sup>2</sup>]

10-25

10-25

剥线长度(Stripping length) [mm]

19

19

螺钉类型(Screw)

M6

M6

扭矩(Torque) [Nm]

3.0

3.0

绝缘材料(Insulation material)

PA66 / V0

PA66 / V0

使用温度(Operating temperial) °C

-40°C ~ 120°C

-40°C ~ 120°C

穿越壳体的厚度(Thick housing panels) [mm]

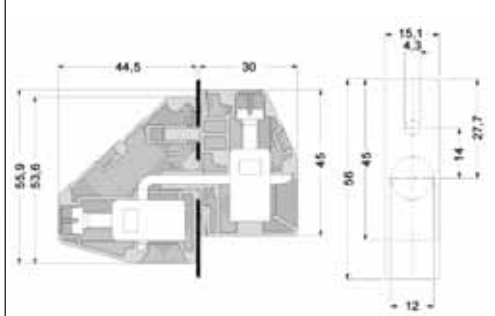
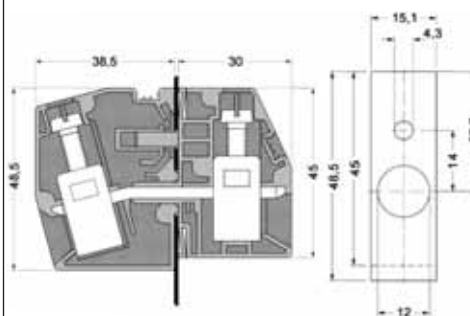
Metal walls:1 to 2.5 (500V)  
Metal walls over:2.5 to 4 (300V)  
Plastic walls:1 to 4 (600V)

Metal walls:1 to 2.5 (500V)  
Metal walls over:2.5 to 4 (300V)  
Plastic walls:1 to 4 (600V)

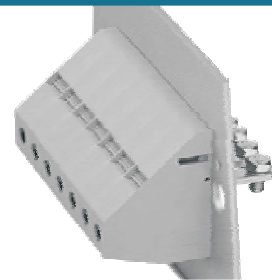
快速标记条(Zack marker strip)

QB-12

QB-12



# (Feed-through Terminal Blocks) 穿墙式接线端子系列



QCTB16-CP

QCTB16V-CP

Element width=12.1 mm

Element width=12.1 mm

## 技术参数(Technical data)

**E304128**

**E304128**

根据IEC/DIN VDE标准确定的技术参数  
(Technical data in accordance with IEC/DIN VDE)

额定负载 (Rated Voltage) [V] / [A]  
(Rated Current)

600V / 100A

600V / 100A

耐受电压(Rated surge voltage) [KV]

4000V

4000V

刚性导线(Solid) [mm<sup>2</sup>]

0.2-25

0.2-25

柔性导线(Stranded) [mm<sup>2</sup>]

0.2-16

0.2-16

剥线长度(Stripping length) [mm]

16

16

螺钉类型(Screw)

M5

M5

扭矩(Torque) [Nm]

2

2

绝缘材料(Insulation material)

PA66 / V0

PA66 / V0

使用温度(Operating temperial) °C

-40°C ~ 120°C

-40°C ~ 120°C

穿越壳体的厚度(Thick housing panels) [mm]

Metal walls:1 to 2.5 (500V)

Metal walls:1 to 2.5 (500V)

Metal walls over:2.5 to 4 (300V)

Metal walls over:2.5 to 4 (300V)

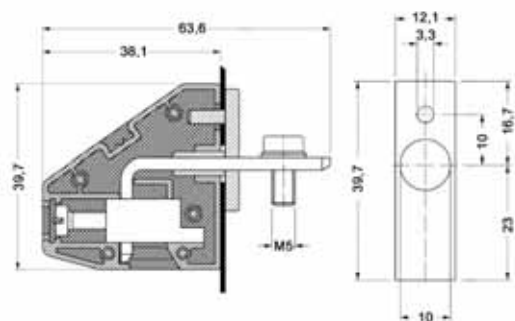
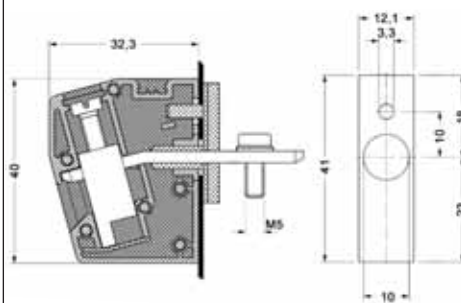
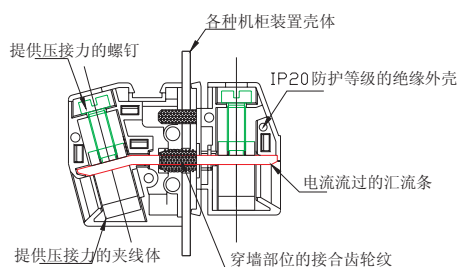
Plastic walls:1 to 4 (600V)

Plastic walls:1 to 4 (600V)

快速标记条(Zack marker strip)

QB-12

QB-12





# 穿墙式接线端子系列 (Feed-through Terminal Blocks)



QCTB25-CP



QCTB25V-CP

Element width=15.1 mm

Element width=15.1 mm

## 技术参数(Technical data)

根据IEC/DIN VDE标准确定的技术参数  
(Technical data in accordance with IEC/DIN VDE)

额定负载 (Rated Voltage) [V] / [A]  
(Rated Current)

耐受电压(Rated surge voltage) [KV]

刚性导线(Solid) [mm<sup>2</sup>]

柔性导线(Stranded) [mm<sup>2</sup>]

剥线长度(Stripping length) [mm]

螺钉类型(Screw)

扭矩(Torque) [Nm]

绝缘材料(Insulation material)

使用温度(Operating temperial) °C

穿越壳体的厚度(Thick housing panels) [mm]

快速标记条(Zack marker strip)

E304128

E304128

500V / 125A

500V / 125A

4000V

4000V

6-35

6-35

10-25

10-25

19

19

M6

M6

3.0

3.0

PA66 / V0

PA66 / V0

-40°C ~ 120°C

-40°C ~ 120°C

Metal walls:1 to 2.5 (500V)

Metal walls:1 to 2.5 (500V)

Metal walls over:2.5 to 4 (300V)

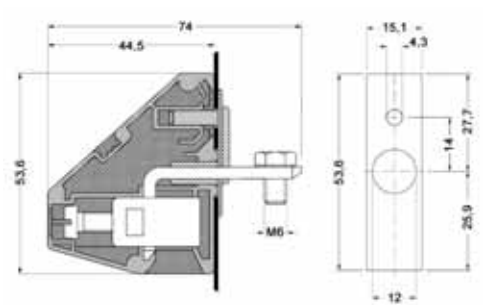
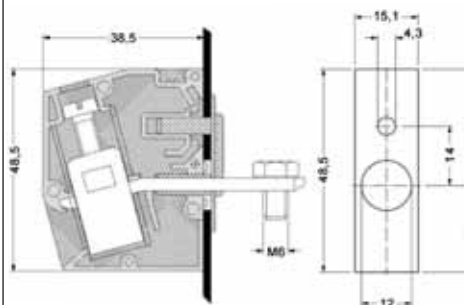
Metal walls over:2.5 to 4 (300V)

Plastic walls:1 to 4 (600V)

Plastic walls:1 to 4 (600V)

QB-12

QB-12



# (Feed-through Terminal Blocks) 穿墙式接线端子系列



QCTB50-CP



QCTB95-CP

Element width=15.1 mm

Element width=15.1 mm

## 技术参数(Technical data)

E304128

E304128

根据IEC/DIN VDE标准确定的技术参数  
(Technical data in accordance with IEC/DIN VDE)

额定负载 (Rated Voltage) [V] / [A]  
(Rated Current)

690V / 150A

800V / 232A

耐受电压(Rated surge voltage) [KV]

4000V

4000V

刚性导线(Solid) [mm<sup>2</sup>]

10-50

35-95

柔性导线(Stranded) [mm<sup>2</sup>]

10-50

35-95

剥线长度(Stripping length) [mm]

24

27

螺钉类型(Screw)

M8

M10

扭矩(Torque) [Nm]

6.0

15.0

绝缘材料(Insulation material)

PA66 / V0

PA66 / V0

使用温度(Operating temperial) °C

-40°C ~ 120°C

-40°C ~ 120°C

穿越壳体的厚度(Thick housing panels) [mm]

Metal walls:1 to 2.5 (500V)  
Metal walls over:2.5 to 6 (400V)  
Plastic walls:1 to 6 (690V)

Metal walls:1 to 2.5 (800V)  
Metal walls over:2.5 to 6 (690V)  
Plastic walls:1 to 6 (1000V)

快速标记条(Zack marker strip)

QB-12

QB-12

