

354809 Ckm (Creatine kinase M-type) BioAssay™ ELISA Kit (Mouse)

Specifications

Brand

BioAssay™

Kit Type

Sandwich ELISA

Tests

4896

Sample Volume

100ul

Sensitivity

0.938ng/ml

Detection Method

Colorimetric

Detection Range

1.563-100ng/ml

Sample Matrix

Serum, plasma, tissue homogenates and other biological fluids

EU Commodity Code

38220000

UN DOT Shipping

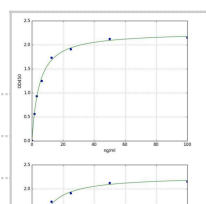
UN2796 PGII

Shipping Temp

Blue Ice

Storage Temp

4°C/-20°C

**Sensitivity**

0.938ng/ml

Range

1.563-100ng/ml

Detection Method

Sandwich ELISA, Double Antibody

Storage and Stability

Store powder at 4°C liquid at -20°C. Store other components at 4°C. Stable for at least 6 months For maximum recovery of product, centrifuge the original vial after thawing and prior to removing the cap.

Sample Type

Serum, plasma, tissue homogenates and other biological fluids

Pricing

List Price: \$588

Order

Sizes:

48Tests ▼

Please [sign in](#) to order and see discounted pricing.

Recently Viewed

[Ckm](#)

354809
