



whitedriveproducts



SERIES
913 -



STAND-ALONE
Hydraulic Brake

BK

苏州帕凯德自动化有限公司

BK (913 Series)

Hydraulic Brake



OVERVIEW

With safety an increasingly important factor in the design and manufacture of equipment, it has become necessary to add a brake to many critical machine functions. In response to that concern, White Drive Products offers the BK10 Series brake. Based on technology proven in White Drive Products integrated motor/brakes, this spring-applied, hydraulically released brake provides 1130 Nm [10,000 lb-in] of holding torque for static brake applications.

Other features contribute to the superior operation and durability of the brake. All internal components, including roller bearings, brake disks, springs and seals were chosen for maximum durability. To further extend the life of the unit and reduce noise, all internal components run in an oil bath. Two brake release ports are also provided to simplify plumbing and bleeding of the brake release circuit during installation. All of these features combine to make the BK 910 Series brake the top choice for any static brake application requiring 1130 Nm [10,000 lb-in] of holding torque.

FEATURES / BENEFITS

- Heavy-duty roller bearings support high shaft loads and provide long life.
- Dual release ports allow easier bleeding of brake release cavity.
- Oil-filled cavity immerses all components providing quiet operation and reduced wear.

HOUSINGS

4-HOLE, BRAKE MOUNT, ALIGNED PORTS

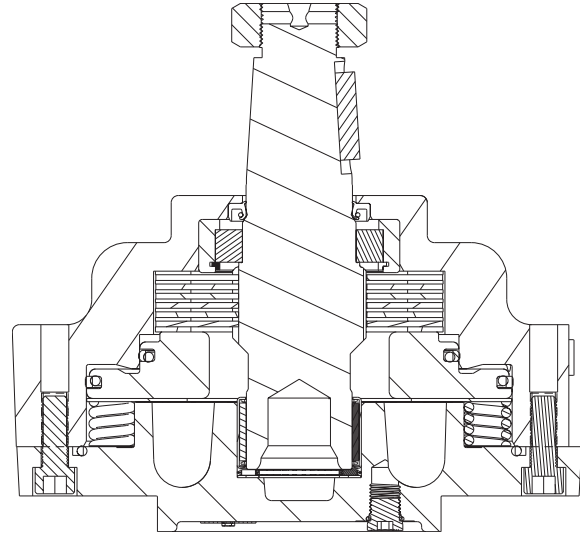
K30 7/16-20 UNF

TYPICAL APPLICATIONS

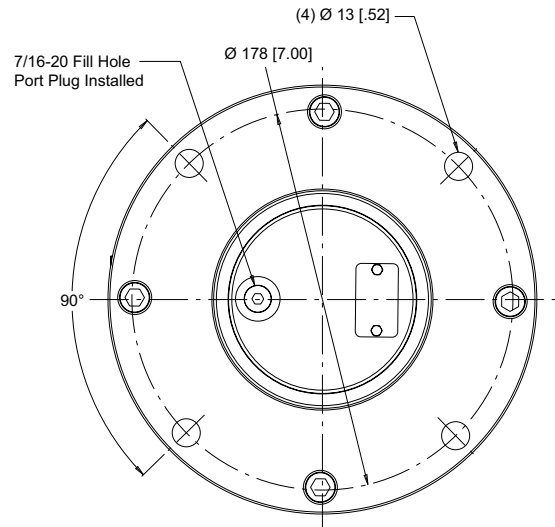
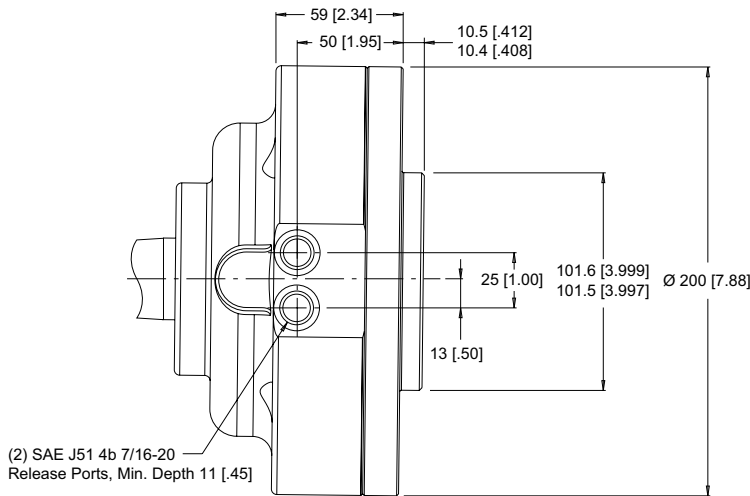
Wheel drives, positioners, conveyors, door openers, swing drives, aerial work platforms and more

SERIES DESCRIPTIONS

913 - Hydraulic Brake
Standard



► Dimensions shown are without paint. Paint thickness can be up to 0.13 [0.005].

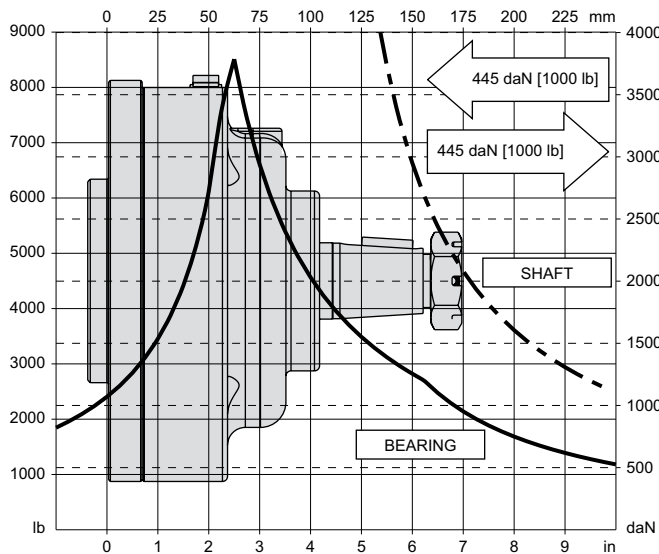


TECHNICAL INFORMATION

ALLOWABLE SHAFT LOAD / BEARING CURVE

The bearing curve represents allowable bearing loads based on ISO 281 bearing capacity for an L₁₀ life of 2,000 hours at 100 rpm. Radial loads for speeds other than 100 rpm may be calculated using the multiplication factor table below.

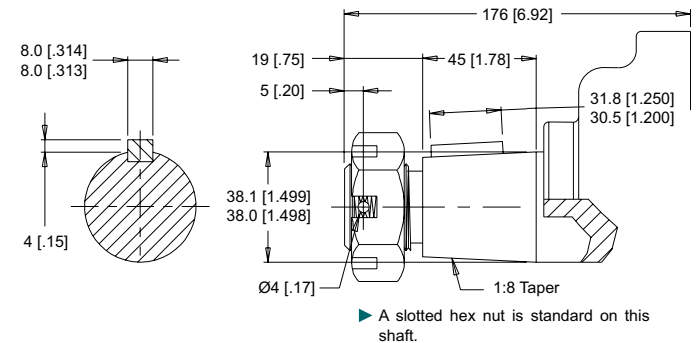
BRAKE MOUNT



BEARING LOAD MULTIPLICATION FACTOR TABLE			
RPM	FACTOR	RPM	FACTOR
50	1.23	500	0.62
100	1.00	600	0.58
200	0.81	700	0.56
300	0.72	800	0.50
400	0.66		

SHAFTS

31 1-1/2" Tapered

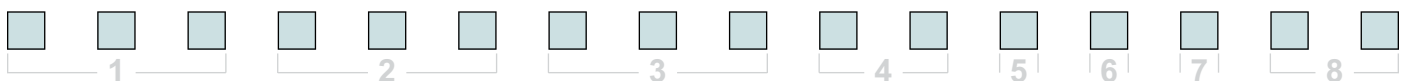


Max. Torque: 2700 Nm [19900 lb-in]

SPECIFICATIONS

- Holding Torque 1130 Nm [10,000 lb-in]
- Release Pressure28 bar [400 psi]
- Maximum release pressure 207 bar [3,000 psi]
- Release volume 11.5 cm³ [0.7 in³]
- Max. Speed 250 rpm
- Max. Operating Temperature 82°C [180°F]
- Weight 16.8 kg [37 lb]
- Fluid Type Mineral based oil

ORDERING INFORMATION



1. CHOOSE SERIES DESIGNATION

913 Hydraulic Brake

2. SELECT A DISPLACEMENT OPTION

000 No Displacement

3. SELECT A MOUNT & PORT OPTION

K30 4-Hole, Brake Mount, Aligned Ports, 7/16-20 UNF

4. SELECT A SHAFT OPTION

31 1-1/2" Tapered

5. SELECT A PAINT OPTION

- A** Black
- Z** No Paint

6. SELECT A VALVE CAVITY / CARTRIDGE OPTION

A None

7. SELECT AN ADD-ON OPTION

- A** Standard
- C** Solid Hex Nut

8. SELECT A MISCELLANEOUS OPTION

AA None

Delivering The Power
To Get Work Done!



whitedriveproducts