

Recorder/16 and Recorder/64 Neural Data Acquisition System

Features

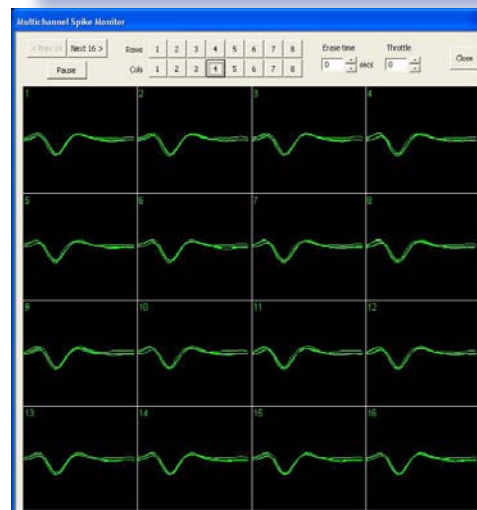
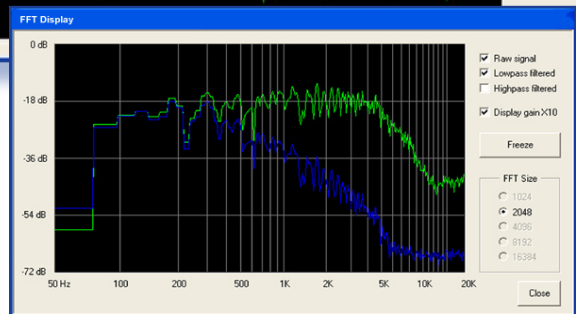
- Available in 16 or 64 channel configurations
- Digital filtering for flexible separation of spikes and field potentials
- Digital event recording (individual TTL or multi-bit strobed word format) of experimental and behavioral data
- Independently selectable digitizing rates for spikes and field potentials
- Programmable referencing (differencing) for artifact removal
- Output monitor channel for viewing raw signals on oscilloscope
- Multichannel display of spike waveforms and firing rates
- Wavestrip scrolling display of continuous wide-band or filtered signals
- Real-time FFT display of raw and filtered signals
- Remote start/stop capability for efficient trial-based recording



Description

Recorder/16 and Recorder/64 are Windows®-based neural data acquisition systems for continuous digitization of up to 16 channels (Recorder/16) or 64 channels (Recorder/64) of spike signals, thresholded spike segments, field potentials, and external digital events.

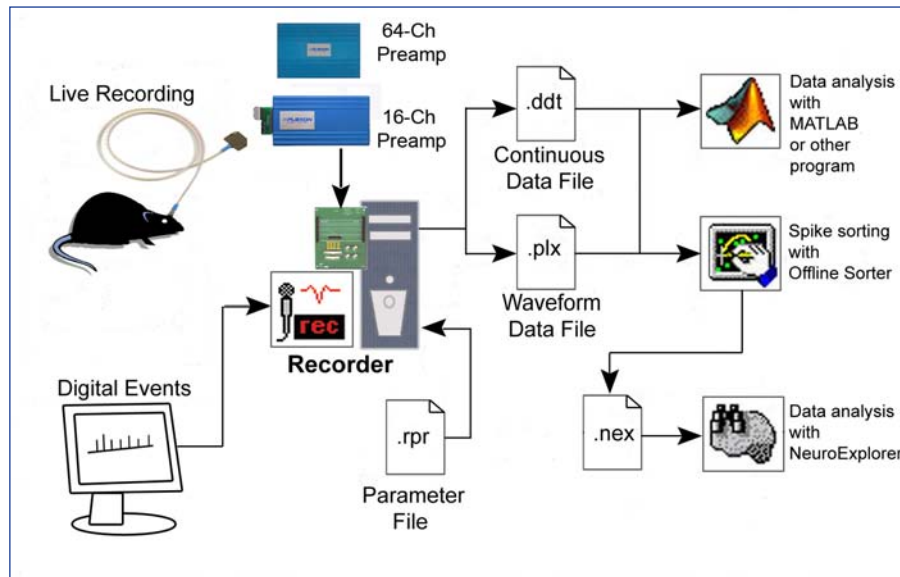
Data recorded from either system can be read by Plexon's Offline Sorter for spike classification, and can then be imported into NeuroExplorer® or MATLAB® for analysis.



Specifications

Technical Specifications - Recorder/16	
A/D Channels	16
A/D Resolution	16 bit or 12 bit
Sampling Frequency per Channel	Up to 50 kHz
Digital Filtering	Filter types: Butterworth, Bessel, Elliptic (1-pole, 2-pole, 4-pole) Bandpass, lowpass, highpass, notch
Digital Event Channels	16 TTL or up to 15 multi-bit strobed word
Bandwidth	1 Hz-6 kHz or as requested
Gain Steps	1000, 2000, 5000, 10000, 20000, 50000, 100000

Technical Specifications - Recorder/64	
A/D Channels	64
A/D Resolution	16 bits
Sampling Frequency per Channel	Up to 40 kHz
Digital Filtering	Filter types: Butterworth, Bessel, Elliptic (1-pole, 2-pole, 4-pole) Bandpass, lowpass, highpass, notch
Digital Event Channels	16 TTL or up to 15 multi-bit strobed word
Bandwidth	1 Hz-6 kHz or as requested
Gain Steps	500, 1000, 1500, 2000, 2500, 3000, 3500



Recorder system signal flow diagram

For ordering information contact Plexon Sales at (214) 369-4957 or info@plexoninc.com.