

華登廣告
0571-85128101
通特制作



營銷中心：無錫耐玖機電

Marketing Center: WuXi Resistant Electrical



營銷中心：無錫耐玖機電設備有限公司

Marketing Center: WuXi Resistant Electrical And MACHINE CO.,LTD.

地址: 无锡市锡山区锡沪东路108号 Add: No. 108 East Xihu road, Xishan district, Wuxi City

销售热线: 400 0000 190 网址: www.wxnjid.com

台灣: 鑫長虹實業有限公司

TAIWAN SKYBRIDGE INDUSTRIAL CO.,LTD.

地址: 台中縣霧峰鄉四德村北丰路68号 Add: No.68, Beifeng Road, Shih Te Village, Wu Feng Hsiang, Taichung Hsien



▶ 本公司享有规格变更之权利，恕不另行通知 (The specifications are subject to change by our company without prior notice.)

中国·杭州
销售热线: 400 0000 190

公司简介 | Company Profile

无锡耐玖机电设备有限公司是长虹机械设在江苏的营销中心，是专业从事“机床及机床附件类产品”的设计、生产、销售的企业。公司产品：“EVERTOP非标（钻、攻、铣、镗）组合专用机床系列；多轴器系列（也称：多轴钻孔器、多轴头、多轴钻、群钻、多孔钻）；EVERTOP龙门式多轴钻孔机床、油压钻孔机床、伺服钻孔攻牙机床、导螺杆攻牙机床系列；各类动力头、精密主轴头系列；油压、伺服滑台系列；传统型万向节系列”等六大系列产品。公司产品具有设计美、品质优、自动化程度高的特点，可为用户节省劳动用工、降低劳动强度，简化生产工序、稳定加工产品质量、大幅提升生产效率。

1996年应中国大陆市场需求，公司开始对中国大陆进行投资，投入了先进的CNC加工设备及检测设备，成立了杭州长虹机械制造有限公司；之后，又创办了杭州贝克机械有限公司。因股份制改造需要，2018年起继续延用杭州长虹机械制造有限公司，并不断开发新产品，以适应不断发展的市场需要。

公司秉承“以精品、精密、精美”为导向，坚持高起点、高标准、采用全新的生产设备、并吸收消化国外先进的生产技术，不断进行技术创新；“以质量为领航、以名牌为追求、以客户为中心”为企业理念，坚持“品质至上、技术领先、精美耐用、用户满意”的质量方针，公司在早期就已通过英国URS认证的ISO9001:2000质量体系标准认证。在生产过程中，建立了系统的质量管控体系，注重每个工作细节、确保了产品质量的稳定和提高。

公司产品销往世界各地，如美国、日本、泰国、法国、西班牙、韩国等国家和地区，内销全国各地，已形成完善的营销网络。生产一流的产品是长虹永恒的主题，一切为用户着想、让用户满意，是长虹机械最忠诚的承诺！

Hangzhou Evertop Machine Co., Ltd (Taiwan Skybridge Industrial Co., Ltd) is professional enterprise for designing, manufacturing, and selling "machine tools and machine tool accessories". Main products in our company includes six series, such as: "EVERTOP non-standard (drilling, tapping, milling, boring) combined special machine tool series; multi-spindle series(also called for multi -spindle drill, multi- spindle head, multi- drilling, multi -facet drill, multi- hole drill); EVERTOP gantry multi- spindle drilling machine tools, oil pressure drilling machine tools, servo drill and tapping machine tool, lead screw tapping machine tools series; various power heads, precision spindle head series; oil pressure, servo sliding series; traditional universal joint series" and other series. The products in our company have the characteristics of "great design, high quality, high degree of automation", which can save the labor, reduce labor intensity, simplify production procedure, stabilize the processing product quality, and improve the production efficiency significantly for users.

In 1996, for responding to the mainland demand, the company begins to invest to China mainland, and introduced the advanced CNC processing equipment and inspection equipment, and established Hangzhou Evertop Machine Co., Ltd; and after, founded Hangzhou Baker Machinery Co., Ltd. Due to the need of shareholding system reform, Since 2018, Hangzhou Evertop Machine Co., Ltd. will continue to be used, and it will continue to develop new products to meet the growing market demand.

The company adheres to the guild line of "competitive products, high precision, exquisiteness", insist on high starting point, high standard, and adopts full new manufacturing equipment, absorb and digest foreign advanced production technologies, and continue to carry out technology innovation; the company concept are: "taking the quality as the navigation, famous brand as the pursuit, customer as the center", and insist on the quality policy "supreme quality, advanced technology, exquisiteness and endurance , users satisfaction ", and in the early stage, the company has already passed the ISO 9001: 2000 quality system standard certification of URS certification in Britain. We had build systematic quality control system, focusing on every detail of work to ensure the stable product quality and improvement.

The products in our company are sold to all over the world, such as America, Japan, Thailand, France, Spain, Korea and other countries and region, domestic sales throughout the country, and had formed a perfect marketing network. It is the eternal theme of Evertop to manufacture first-class products, everything concerned for customer and make customer satisfied, which is most faithful promise of Evertop Machine!



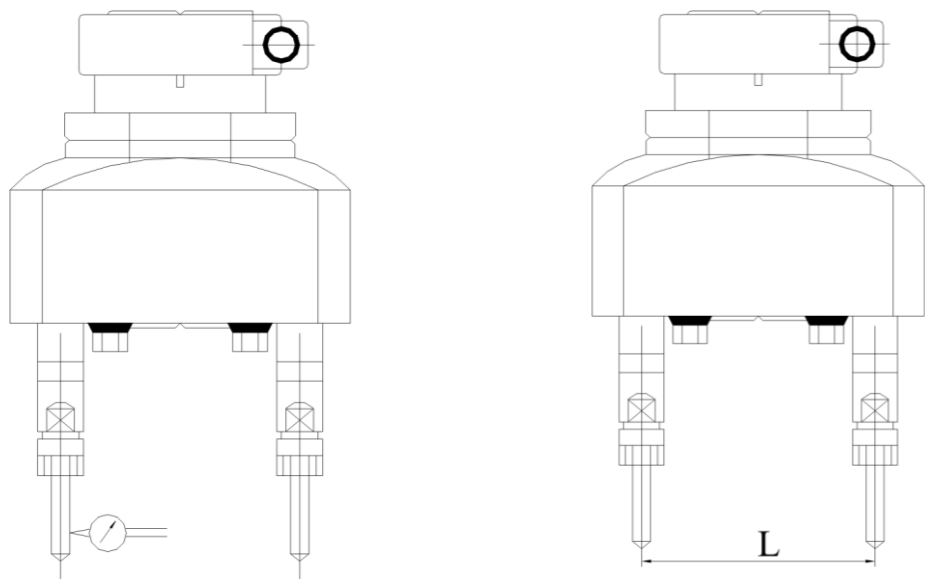
目录 | Contents

企业面貌 / The Picture of Ever top.....01	● 桌式伺服钻孔机.....27
多轴器系列 / Multi-Spindle Drilling & Tapping Head Series...03	Desk s Servo Drilling Machine
● 多轴器主要精度要求.....03	● 单机头龙门钻孔机.....28
Main specifications of multi-spindle Unit	Single Head Gantry Drilling Machine
● 噪声(由分贝仪测定).....03	● 龙门式一立三卧攻牙专用机.....28
Noise (measured by decibel meter)	Gantry type one-vertical three-horizontal tapping special machine
● 输出轴径向跳动.....04	● 三机头卧式钻孔专用机.....29
Radial run-out of output shaft	Three-head horizontal drilling special machine
● 两孔间距离L.....04	● 三机头卧式攻牙专用机.....29
Hole to hole distance L	Three-head horizontal tapping special machine
● 标准附件清单.....04	● 八工位转盘铣钻机床.....30
Standard accessory list	Eight-station rotary table milling machine tool
● (中切削)两轴可调式T型.....05	桌式方箱数控机床系列 /31
(Medium cutting) Type T with two adjustable spindles	Table Type Square box CNC machine tool series
● (中切削)可调式样A型.....05	● NC25/NC35/NC45数控机床/NC25 / NC35 / NC45 CNC machine tools.....31
(Medium cutting) Type A adjustable type	三轴数控机床系列 /32
● (中切削)U型圆型多轴器.....06	Series of three-axis CNC machine tools
(Medium cutting) Type U round shaft multi-spindle tool	台式机床系列 / Table type machine tool series.....33
● (中切削)U型方型多轴器.....07	● ZK-20台式数控钻床/ZK-20 bench CNC drilling machine.....33
(Medium cutting) Type U square shaft multi-spindle tool	● JT4508/JT6516/JT6532台式牙距攻丝机/table-top pitch tapping machine.....34
● (重切削)U型系列多轴器.....09	动力头系列 / Power Head series.....35
(Heavy cutting) Type U multi-spindle tool	● BHD5/6/8油压动力头.....35
● 固定式系列多轴器.....10	BHD5/6/8 Hydraulic Power Head
Fixed multi-spindle tool	● N6攻牙动力头.....38
● 固定型加导孔板(标准样式).....12	N6 Tapping Head
Fixed type with board of guiding hole (standard type)	● BHN6攻牙动力头.....39
● 多轴器加工结构图.....12	BHN6 Tapping Head
Multi-spindle tool structure chart	● N7攻牙动力头.....40
● 多轴器(固定式系列).....13	N7 Tapping Head
Multi-Spindle head(Fixed series)	● BHN8攻牙动力头.....41
● 配件.....14	BHN8 Tapping Head
(Accessory)	● NC-BHD6/8伺服动力头.....42
● 配合机种主轴端尺寸.....15	NC-BHD6/8 Servo Power Head
Dimension of spindle nose	● NC25/35/45伺服动力主轴外形尺寸图.....45
● 多轴器参数.....16	NC25/35/45 Servo Power Spindle Size Specification
Specs of the multi-spindle tool	滑台系列 / Slipway series.....47
加工零件实例 / Example of machining part.....20	● (伺服/油压)硬轨滑台.....47
机床系列 / Machine tools series.....22	The (Servo/Hydraulic) Slide With Hardened Way
● 桌式导螺杆自动进刀攻牙机.....22	● 伺服硬轨滑台.....48
Desk Lead Crew Automatic Feed Tapping Machine	The Servo Slide With Hardened Way
● 桌式油压自动进刀钻孔机床.....22	● 伺服硬轨十字滑台.....50
Desk Lead Crew Automatic Feed Tapping Machine	The Servo Cross Slide With Hardened Way
● 立式油压自动进刀钻孔机床.....23	● 立式伺服线轨卧式镗铣主轴头滑台.....52
Vertical Hydraulic Automatic Feed Drilling Machine	Vertical Servo Linear Slide With Horizontal Boring Spindle Head
● 立式导螺杆自动进刀攻牙机.....24	● 卧式三轴伺服镗铣主轴头滑台.....54
Vertical Lead Crew Automatic Feed Tapping Machine	3-Axis Simultaneous Motion Servo Slide With Horizontal Boring Spindle Head
● 桌式导螺杆自动进刀攻牙机.....24	主轴头系列 / Spindle Head series.....56
Desk Lead Crew Automatic Feed Tapping Machine	● Sr60 精密主轴头.....56
● 桌式油压自动进刀钻孔机.....25	SR60 Precision Spindle Head
Desk Hydraulic Automatic Feed Drilling Machine	● SR80 精密主轴头.....57
● 桌式导螺杆自动进刀攻牙机.....25	SR80 Precision Spindle Head
Desk Lead Crew Automatic Feed Tapping Machine	
● 桌式双联型钻攻机床.....26	
Desk Double Bits Drilling Machine	



多轴器主要精度要求

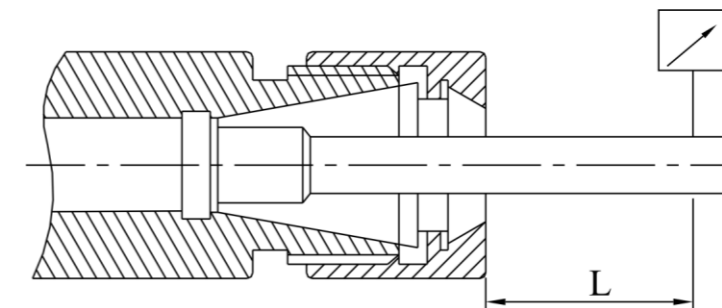
Main specifications of multi-spindle Unit



噪声(由分贝仪测定)

Noise (measured by decibel meter)

型號 Type	轉速(rpm) Rotation rate(rpm)	測點距離(cm) Point distance (cm)	最大噪聲值(dB) Max. Noise level (dB)
A型 Type A	2000	30	88
T型 Type T	2000	30	83
U型(8軸以內)最大軸距<200mm Max. shaft distance of Type U (equal or less than 8 shafts): < 200mm	2000	30	85
U型(8軸以內)最大軸距≥200mm Max. shaft distance of Type U (equal or less than 8 shafts): ≥ 200mm	2000	30	90
U型(8軸以上)最大軸距<200mm Max. shaft distance of Type U (more than eight spindles): < 200mm	2000	30	88
U型(8軸以上)最大軸距≥200mm Max. shaft distance of Type U (more than eight spindles): ≥ 200mm	2000	30	93

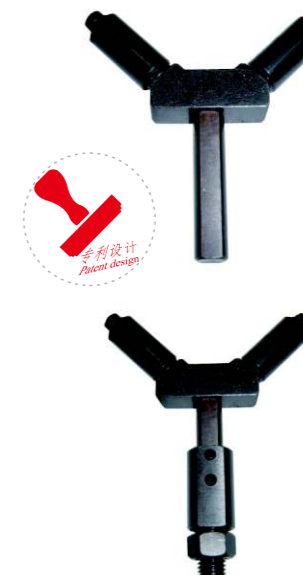


徑跳值由標準帶ER錐度芯棒測得 Radial runout value (measured by standard ER taper rod)

輸出軸徑向跳動

Radial run-out of output shaft

型號 Type	距離L(mm) Distance(mm)	徑向跳動 Radial runout
ER8	40	0.05
ER11	40	0.05
ER16	40	0.05
ER20	40	0.05
C5	40	0.10
C6	40	0.10
C9	40	0.10
C12	40	0.10



兩孔間距離L

Hole to hole distance L

類別 Category	距離L(mm) Distance(mm)
加導孔板 With board of guiding hole	±0.05
不加導孔板 Without board of guiding hole	±0.1



標準附件清單

Standard accessory list

- | | |
|----------------|---------------------------|
| 1. V型支架1套 | 1. V-Bracket 1 |
| 2. M14六角螺母1個 | 2. M 14 hexagonal nut 1 |
| 3. 彈簧2支 | 3. Spring 2 |
| 4. M8×45六角螺栓4個 | 4. M8×45 hexagonal bolt 4 |
| 5. M8螺母4個 | 5. M8 bolt 4 |

(中切削)两轴可调式T型

(Medium cutting) Type T with two adjustable spindles

- T型两轴可调式多轴器可做小距离之钻孔，攻牙作业，轻巧灵活，操作方便。
- T型两轴可调式多轴器结构轻巧，适合在普通台钻上使用，使机台发挥双倍效率。
- Type T multi-spindle tool with two adjustable spindles can be used for drilling small-distance holes and tapping work. It is very convenient and easy to operate.
- With a light structure, Type T multi-spindle head with two adjustable spindles, it is very suitable for the bench drill and make its efficiency double.

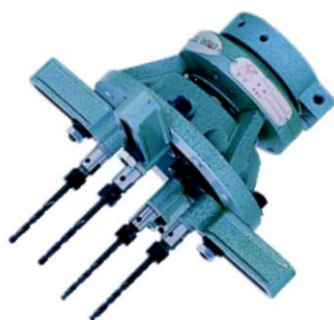


型号 Type	ST108	ST121	ST121	ST200	ST200
筒夹规格Collet/ 最大钻孔能力 Max.Drilling Capacity	ER11/7 C6/6	ER16/10 C9/9	ER20/13 C12/12	ER20/13 ER25/16	MT2/16 MT3/18
转速比 Gear Ratio	1:1 1:2	1:1 1:2	1:1	1:1	1:1
最小距离(二轴间) Lowest Distance(Two Spindle)	18	24	27	45	45
最大轴心范围 Max.Range of Centers	108	121	121	200	200
轴数 Spindle	2	2	2	2	2

(中切削)可调式样A型

(Medium cutting) Type A adjustable type

- A型四轴可调式多轴器用于小距离加工作业
- 可依实际需求选用2-4轴。
- A型四轴可调式多轴器结构轻巧，适合在普通台钻上使用，使机台发挥四倍的效率。
- Type A multi-spindle tool with four adjustable spindles can be used for short-distance work.
- 2-4 spindles can be selected according to actual situation.
- With a light structure, Type A multi-spindle tool with four adjustable spindles is very suitable for the bench drill and may increase its efficiency by four times.



型号 Type	SA116	SA124	SA124
筒夹规格Collet/ 最大钻孔能力 Max-Drilling Capacity	ER11/7 C6/6	ER16/10 C9/9	ER20/13 C12/12
转速比 Gear Ratio	1:1.35	1:1.3	1:1.3
最小距离(二轴间) Lowest Distance	18	26	28
最大轴心范围 Max.Range of Centers	100	124	124
轴数 Spindle	2-4	2-4	2-4

(中切削)U型圆型多轴器

(Medium cutting) Type U round shaft multi-spindle tool

- 本体结构利用齿轮箱配合万向节头所组成，容易调整加工孔距不受齿轮所限制，节省调整的时间，也少有死角的限制，适合加工接近圆周分布孔的工作，是可调式中最容易操作使用的规格。为保万向节头之寿命，移动范围不得超过15度，等于垂直之前后左右30mm以内。

(尽量配合工作之孔距坐标，设计齿轮箱结构即定镗孔位)

- The basic frame consists of gear case and cardan joint. The distance of hole will be easy to control and not to be restricted by gears. The set up time is thus saved and it is mostly free of dead angles. It is very suitable for working of round holes and is the easiest to operate among the adjustable type. To ensure the lifetime of the cardan joint, the moving range should be confined within 15 degrees, which means within a distance of 30mm to the vertical status.

(We will design the structure of gear case, that is, the position of the boring hole as much as possible according to the coordinate of per hole.)



※ 万向节注意事项:

- 1 调整时不能超过规定的角度15度
- 2 如超过此极限心轴易磨损或断裂
- 3 工作时应经常加润滑油

※ Note of cardan joint

1. Do not set the angle to more than the specified 15 degrees.
2. If the limit is exceeded, the shaft will be easy to wear or break.
3. During work, lubrication should be added frequently.

型号 Type	SU80	SU110	SU165	SU200	SU250	SU300
筒夹规格Collet/ 最大钻孔能力 Max.Drilling Capacity	D4	ER8/5 C5/5 ER11/7 C6/6 ER16/10 C9/9 ER20/13 C12/12	ER8/5 C5/5 ER11/7 C6/6 ER16/10 C9/9 ER20/13 C12/12	ER8/5 C5/5 ER11/7 C6/6 ER16/10 C9/9 ER20/13 C12/12	ER8/5 C5/5 ER11/7 C6/6 ER16/10 C9/9 ER20/13 C12/12	ER8/5 C5/5 ER11/7 C6/6 ER16/10 C9/9 ER20/13 C12/12
转速比 Gear Ratio	1:1	1:1 1:2	1:1 1:2	1:1 1:2	1:1 1:2	1:1 1:2
最小距离(二轴间) Lowest Distance(Two Spindle)	10	13 18 26 28	13 18 26 28	13 18 26 28	13 18 26 28	13 18 26 28
最大轴心范围 Max.Range of Centers	80	110	165	200	250	300
轴数 Spindle	2-4	2-6	2-10	4-12	4-12	4-14

(中切削)U型方型多轴器

(Medium cutting) Type U square shaft multi-spindle tool

- 方型可调式多轴器结构与圆型相同。工作孔距如属直线或长方形万向多轴器，以免移位量太大损害万向节接头寿命。使用方法与圆型相同。
(尽量配合工作之孔距坐标，设计齿轮箱结构即定镗孔位)
- The structure of the square shaft multi-spindle tool is the same as the structure of the round shaft multi-spindle tool. This multi-spindle tool is suitable for the straight line or the rectangular working hole. When using, don't move too much to reduce the lifetime of the cardan joint. The usage is also the same as the round shaft one.
(We will design the structure of gear case, that is, the position of the boring hole as much as possible according to the coordinate of per hole.)



※ 万向节注意事项：

- 1 调整时不能超过规定的角度15度
- 2 如超过此极限心轴易磨损或断裂
- 3 工作时应经常加润滑油脂

※ Note of cardan joint

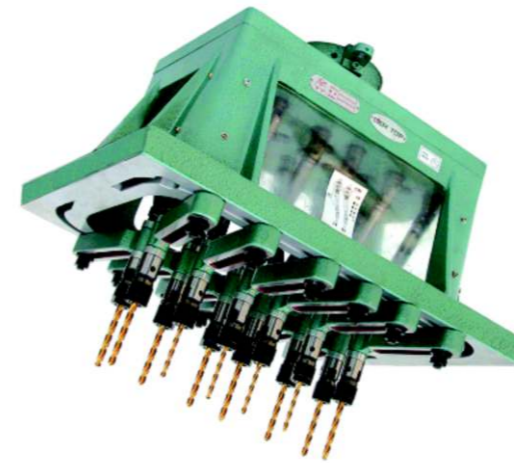
1. Do not set the angle to more than the specified 15 degrees.
2. If the limit is exceeded, the shaft will be easy to wear or break.
3. During work, lubrication should be added frequently.

型號 Type	SU100×165	SU120×200	SU120×300	SU160×450	SU220×360	SU250×500
筒夾規格Collet/ 最大鑽孔能力 Max.Drilling Capacity	ER8/5 ER11/7 ER16/10 ER20/13 C5/5 C6/6 C9/9 C12/12	ER8/5 ER11/7 ER16/10 ER20/13 C5/5 C6/6 C9/9 C12/12	ER8/5 ER11/7 ER16/10 ER20/13 C5/5 C6/6 C9/9 C12/12	ER8/5 ER11/7 ER16/10 ER20/13 C5/5 C6/6 C9/9 C12/12	ER8/5 ER11/7 ER16/10 ER20/13 C5/5 C6/6 C9/9 C12/12	ER8/5 ER11/7 ER16/10 ER20/13 C5/5 C6/6 C9/9 C12/12
轉速比 Gear Ratio	1:1 1:2	1:1 1:2	1:1 1:2	1:1 1:2	1:1 1:2	1:1 1:2
最小距離(二軸間) Lowest Distance(Two Spindle)	13 18 26 28	13 18 26 28	13 18 26 28	13 18 26 28	13 18 26 28	13 18 26 28
最大軸心範圍 Max.Range of Centers	100×165	120×200	120×300	160×450	220×360	250×500
軸數 Spindle	2-8	2-12	4-16	4-16	6-14	4-18

(中切削)U型方型多轴器

(Medium cutting) Type U square shaft multi-spindle tool

- 方型可调式多轴器结构与圆型相同。工作孔距如属直线或长方形万向多轴器，以免移位量太大损害万向节接头寿命。使用方法与圆型相同。
(尽量配合工作之孔距坐标，设计齿轮箱结构即定镗孔位)
- The structure of the square shaft multi-spindle tool is the same as the structure of the round shaft multi-spindle tool. This multi-spindle tool is suitable for the straight line or the rectangular working hole. When using, don't move too much to reduce the lifetime of the cardan joint. The usage is also the same as the round shaft one.
(We will design the structure of gear case, that is, the position of the boring hole as much as possible according to the coordinate of per hole.)



※ 万向节注意事项：

- 1 调整时不能超过规定的角度15度
- 2 如超过此极限心轴易磨损或断裂
- 3 工作时应经常加润滑油脂

※ Note of cardan joint

1. Do not set the angle to more than the specified 15 degrees.
2. If the limit is exceeded, the shaft will be easy to wear or break.
3. During work, lubrication should be added frequently.

型號 Type	SU170X200	SU300X400	SU400X550	SU450X550	SU150X800	SU300X1000
筒夾規格Collet/ 最大鑽孔能力 Max.Drilling Capacity	ER8/5 ER11/7 ER16/10 ER20/13 C5/5 C6/6 C9/9 C12/12	ER8/5 ER11/7 ER16/10 ER20/13 C5/5 C6/6 C9/9 C12/12	ER8/5 ER11/7 ER16/10 ER20/13 C5/5 C6/6 C9/9 C12/12	ER8/5 ER11/7 ER16/10 ER20/13 C5/5 C6/6 C9/9 C12/12	ER8/5 ER11/7 ER16/10 ER20/13 C5/5 C6/6 C9/9 C12/12	ER8/5 ER11/7 ER16/10 ER20/13 C5/5 C6/6 C9/9 C12/12
轉速比 Gear Ratio	1: 1 1: 2	1: 1 1: 2	1: 1 1: 2	1: 1 1: 2	1: 1 1: 2	1: 1 1: 2
最小距離(二軸間) Lowest Distance(Two Spindle)	13 18 26 28	13 18 26 28	13 18 26 28	13 18 26 28	13 18 26 28	13 18 26 28
最大軸心範圍 Max.Range of Centers	170×200	300×400	400×550	450×550	150×800	300×1000
軸數 Spindle	2-12	4-16	4-18	4-18	4-18	4-18

(重切削)U型系列多轴器

(Heavy cutting) Type U multi-spindle tool

- 本体结构利用齿轮箱配合万向节头所组成，容易调整加工孔距不受齿轮所限制，节省调整的时间，也少有死角的限制，适合加工接近圆周分布孔的工件。其齿轮、轴承、输出轴、万向节均采用强力系列，适合加工钢件等强力场合。为保万向节头之寿命，移动范围不得超过15度，等于垂直之前后左右30mm以内。

(尽量配合工作之孔距坐标，设计齿轮箱结构即定镗孔位)

- The basic frame consists of gear case and cardan joint. The hole-distance is easy to control and will not be affected by the gears. The set up time is thus saved and it is mostly free of dead angles. It is very suitable for working of round holes. The gear, bearing, output shaft and cardan joint are all intensified, so it is good at machining hard parts such as steel parts. To ensure the lifetime of the cardan joint, the moving range should be confined within 15 degrees, which means within a distance of 30mm to the vertical status.

(We will design the structure of gear case, that is, the position of the boring hole as much as possible according to the coordinate of per hole.)



注意事项

不能超过规定的角度15度

比极限心轴易磨损或断裂

经常加润滑油脂

cardan joint

set the angle to more than the specified 15 degrees. if it is exceeded, the shaft will be easy to wear or break. work, lubrication should be added frequently.

固定式系列多轴器 (中切削/重切削/超重切削)

Fixed multi-spindle tool (Medium cutting/Heavy cutting/overweight cutting)

- 固定型机种轴数不拘，钻轴型式，尺寸大小可依客户之需求设计。
- 大量生产高精度之产品，请使用固定型多轴器，外型小，比活动式更耐用、更精确，并可减少调整加工孔距的时间。
- 可避免因调整错误，以致产品损坏所受的损失。
- 不同尺寸的钻头或不同牙距的丝攻均可同时加工。
- 固定型多轴器，请加导孔治具，使多轴头容易对准工件，提升产品品质。

轴距分布尺寸：在尺寸可调整到的范围之内均可制作成固定式。



WWFB/WFB/FB型
(TYPE WWFB/WFB/FB)

WFT/FT型
(TYPE WFT/FT)

型号 Type	SWU165	SWU200	SWU250	SWU100×165	SWU120×200	SWU120×300
筒夹规格Collet/ 最大钻孔能力 Max.Drilling Capacity	ER20/13 C12/12	ER20/13 C12/12	ER20/13 C12/12	ER20/13 C12/12	ER20/13 C12/12	ER20/13 C12/12
转速比 Gear Ratio	1:1	1:1	1:1	1:1	1:1	1:1
最小距离(二轴间) Lowest Distance(Two Spindle)	42	42	42	42	42	42
最大轴心范围 Max.Range of Centers	165	200	250	100×165	120×200	120×300
轴数 Spindle	2-10	4-12	4-12	3-8	4-12	6-14

- There are various options for the number of shafts and the shaft types of the fixed type. The dimension can also be designed per customer's request.
- The fixed multi-spindle tool is very good for the volume production of high-precision parts. It is small but more durable than the non-fixed type. It is also more precise and may help to reduce the set up time for the working hole.
- Error due to set up mistake, which may lead to part damage, can be avoided.
- Drill bits and taps of different sizes may run at the same time.
- When running fixed multi-spindle tool, please use fixture of guiding holes, which can help the multi spindles to accurately aim at the part so to improve the quality of the part.
- Shaft distance distribution: as long as the dimension is within the range, fixed type can be made.



WFA/FA型
(TYPE WFA/FA)



FU/WFU方型
(FU/WFU SQUARE TYPE)



FU/WFU圆型
(FU/WFU ROUND TYPE)

型号 Type	最大轴心范围 Max. Axis scope	型号 Type	最大轴心范围 Max. Axis scope
FA124	Φ124	WFB130	Φ130
FA200	Φ200	WFB170	Φ170
FA250	Φ250	WFB210	Φ210
FA160×250	160×250	WFB250	Φ250
FA250×320	250×320	WFB300	Φ300
FA200×400	200×400	WFB400	Φ400
FA200×600	200×600	WFB450	Φ450
FB90	Φ90	WFB130×260	130×260
FB130	Φ130	WFB300×400	300×400
FB170	Φ170	WFT200	Φ200
FB210	Φ210	WFT250	Φ250
FB300	Φ300	WFT300	Φ300
FB400	Φ400	WFU110	Φ110
FB450	Φ450	WFU165	Φ152
FB130×260	130×260	WFU200	Φ190
FB300×400	300×400	WFU250	Φ240
FT52	Φ52	WFU100×165	90×152
FT121	Φ121	WFU120×200	102×190
FT200	Φ200	WFU120×300	102×290
FT300	Φ300	GFA124	Φ124
FT400	Φ400	GFA200	Φ200
FU110	Φ100	GFA250	Φ250
FU165	Φ165	GFA160×250	160×250
FU200	Φ200	GFA250×320	250×320
FU250	Φ250	GFA200×400	200×400
FU300	Φ300	GFA200×600	200×600
FU100×165	100×165	WWFB200	Φ200
FU120×200	120×200	WWFB300	Φ300
FU120×300	120×300	WWFB400	Φ400
FU160×450	160×450	WWFB500	Φ500
FU220×360	220×360		
FU250×500	250×500		
WFA124	Φ124		
WFA200	Φ200		
WFA250	Φ250		
WFA160×250	160×250		
WFA250×320	250×320		
WFA200×400	200×400		
WFA200×600	200×600		

固定型加导孔板(标准样式)

Fixed type with board of guiding hole (standard type)

固定型加导孔板多轴器准确耐用，在更换工件时，有很多空间取付方便，不会受到治具之妨碍。所加工出来的产品更精确，多轴器更耐用。使用多轴器最标准的方法。

Fixed multi-spindle tool with board of guiding hole is accurate and durable. There is enough room for changing parts and work won't be affected by fixture either. Parts machined with it are more accurate and the multi-spindle tool is more durable. It is most standard multi-spindle tool solution.

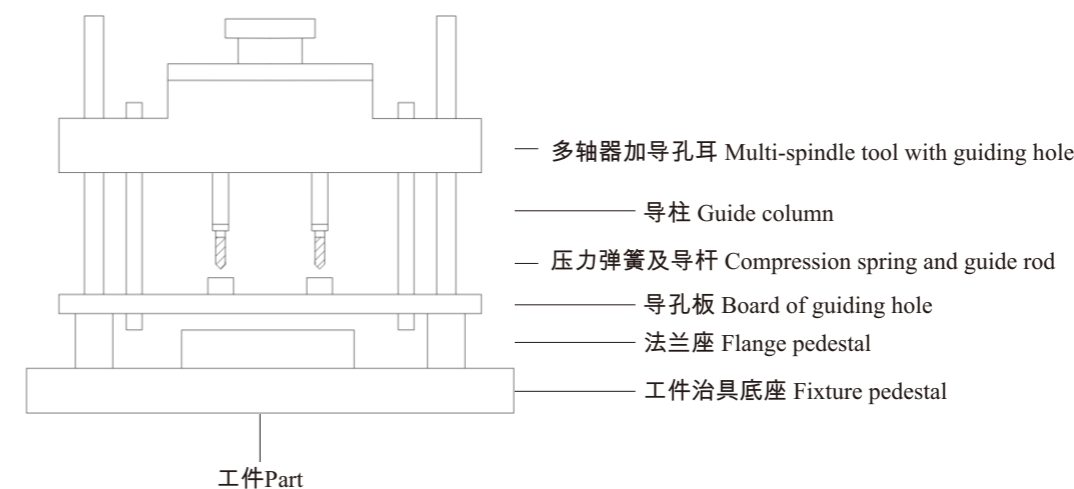
FIXED TYPE SPINDLE HEAD

- Fixed type spindle head is for mass product design. The spindle head depend on customer's requirement to design And make.
- The fixed type can save time to adjust and more durable. The fixed spindle head can avoid the worker make wrong adjustment to damage the materials. The fixed spindle head can add guide hole on the head to help the worker to adjust the tooing.
- The fixed type spindle head can add guide plate for special drilling, the guide plate can guide the correct position during the work and to avoid the bit slip.



多轴器加工结构图(多轴器+导孔板与工件治具可分解模式)

Multi-spindle tool structure chart (multi-spindle tool + board of guiding hole + fixtures)



多轴器(固定式系列) Multi-Spindle head(Fixed series)



一钻一攻双头机,配合夹具,加工气缸盖
Double head machine with one drill and one tap can process cylinder head using a jig.



超长型固定式多轴器
Extra length fixed multi-spindle too



小距离加工的固定式
Fixed processing of small distance



缝纫机机头加工样式
The head processing mode of sartorius



缝纫机机头加工样式
The head processing mode of sartorius



缸体加工,侧面定位,双油缸夹紧
Cylinder process, side locate and doublecylinder clamp



U型固定式,配合油压卡盘
(工件硬度28-32HRC)
U-type fixed model, with oil pressure chuck
(workpiece rigidity: 28-32HRC)



冷却系统与多轴器的结合
Combination of cooling system and multi-spindle head



单轴偏位加工的方案
Solution of uniaxial deviation process

配件 Accessory



传统万向节
Traditional cardan joint

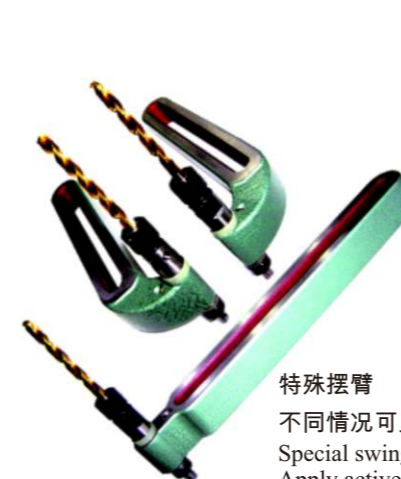


快换万向节
Quick set-up cardan joint

品名 Name	型号 Type	连接内孔直径 Connect I.D. (inner diameter)	外圆直径 O.D. (outer diameter)
传统万向节 Traditional cardan joint	NSC-10-01AA	φ10	φ22
传统万向节 Traditional cardan joint	NSC-10-01A	φ10	φ19
传统万向节 Traditional cardan joint	NSC-08-01A	φ8	φ15
传统万向节 Traditional cardan joint	NSC-06-01A	φ6	φ12

用六角传动的快换式万向节,具有高强度,高刚性,方便快捷之优点。
The hexagonal driven quick set-up cardan joint has the advantages of high strength, high rigidity, convenience and immediacy.

品名 Name	型号 Type	六角对边 Hexagonal subtense	外圆直径 O.D. (outer diameter)
快换万向节 Quick set-up cardan joint	NSC-14-06A6	12.8	φ29.5



特殊摆臂
不同情况可灵活运用
Special swing arm
Apply actively under different cases



径向浮动输出轴,
可以用于孔位微偏时的攻牙
The radial floating output shaft
can be used for tapping teeth when
the hole is small.

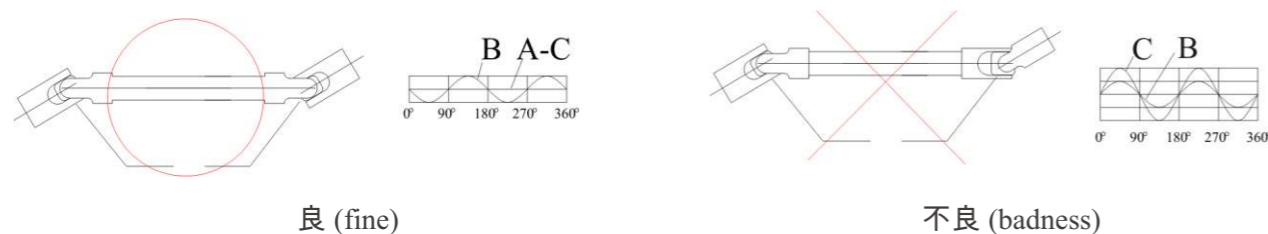


轴向浮动输出轴不同牙距螺
孔可同时加工
Axial Floating output shaft
Simutaneous processing of
screws with different pitch

万向节组装注意事项 (Note of cardan joint installation)

U型多轴器输出轴组由上下2个万向节配合六角传动轴组成，组装时须注意万向节内侧爪须同一位置，方向，以免造成挠曲偏摆量过大损及其寿命。

The output shafts of the Type U multi-spindle tool consist of two (up and down) cardan joint and hexagonal driven shafts. When installing, note to have the inner clutches of the cardan joint in the same position and direction, and avoid too much wrest or twist that may cause damage or influence the lifetime.

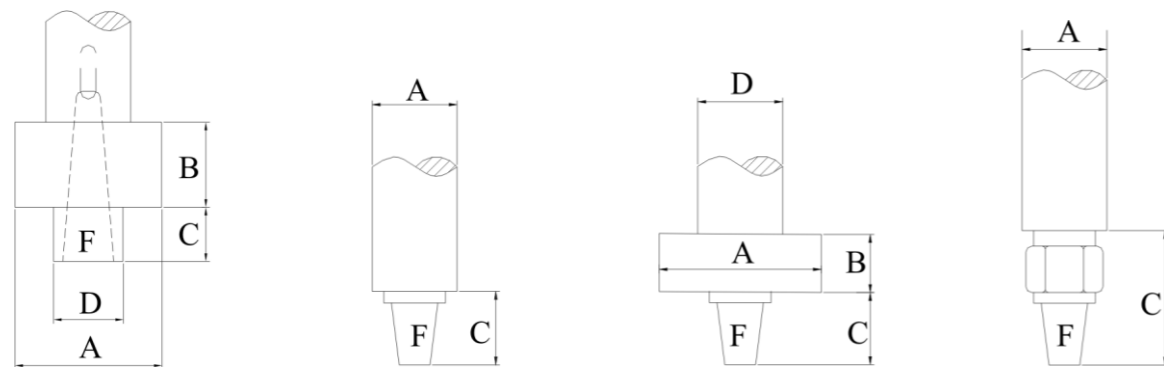


配合机种主轴端尺寸(常用规格如下列图型,如特殊规格请另传真尺寸)

Dimension of spindle nose (round shaft is the standard type, for specific type please fax the specified dimension)

钻床、自动攻牙机、两用钻孔攻牙机、综合中心机、空油压动力头、专用机之钻孔主轴头、攻牙主轴头。

Drilling machine, automatic tapping machine, drilling and tapping machine, machining center, air and oil pressure drilling head, special drilling spindle head, tapping spindle head



机台头部尺寸 (Dimension of machine/tool head)

厂牌 Manufacturer brand	机型 Machine type	A±0.01	B	C	D±0.01	F

A部尺寸请用分厘卡测定。Survey a size, please use micrometer.

加工条件注意事项 (Note of machining condition)

加工方式 Process method	加工材质 Process material	轴数 Number of shafts	导孔板 Board of guiding hole	定位孔 Locating hole

订购时机种的选择注意事项:

1. 加工尺寸之中心距离、孔径、材料。
2. 加工内容，钻床、攻牙、绞孔。
3. 配合钻床之型式及厂牌编号。

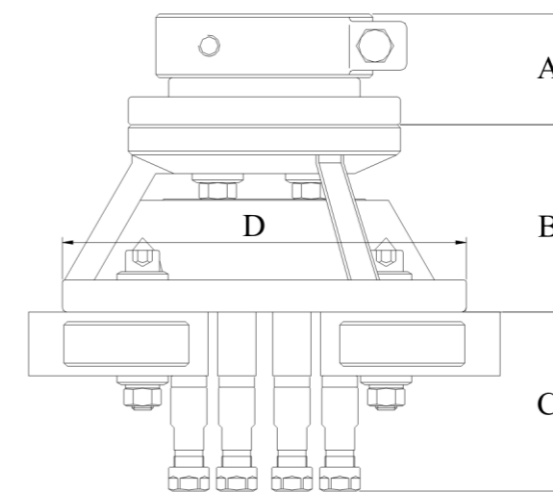
Purchase Note:

1. Processed center distance, hole size and material.
2. Process content, drilling machine, tapping, fraising.
3. Be compatible with the drilling machine (type and brand).

多轴器参数

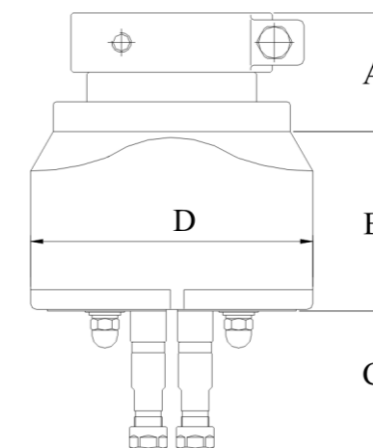
Specs of the multi-spindle tool

SA型 (SA Type)

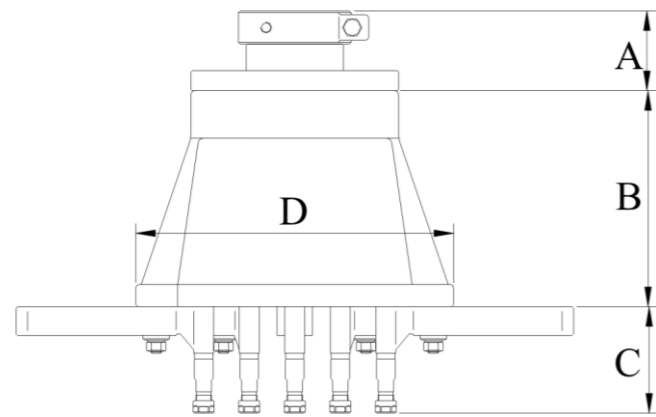


型号 Type	A		B	C								D
	Φ65(MT2)	Φ95(MT3)		ER8	ER11	ER16	ER20	C5	C6	C9	C12	
SA116	52	/	88	/	74	86	96	/	80	99	102	190
SA124	52	62	92	/	74	86	96	/	80	99	102	227

ST型 (ST Type)

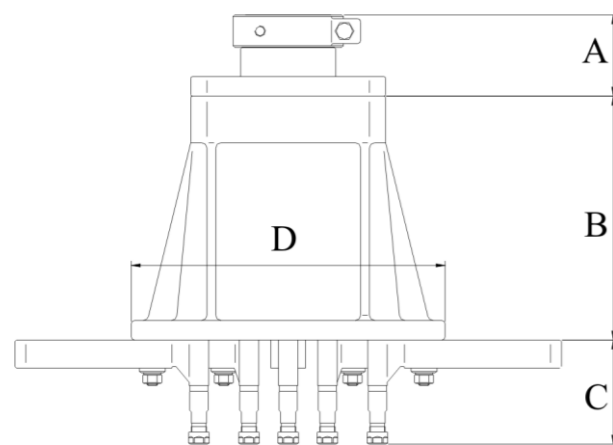


型号 Type	A			B	C								D	
	Φ65(MT2)	Φ95(MT3)	Φ95(MT4)		ER8	ER11	ER16	ER20	C5	C6	C9	C12		MT2
ST108	67	105	134	84	/	60	84	84	/	67	87	91	133	140×107
ST121	67	105	134	88	/	60	84	84	/	67	87	91	133	172×107
ST200	57	67	96	129.5	/	60	84	84	/	67	87	91	133	258.5×136

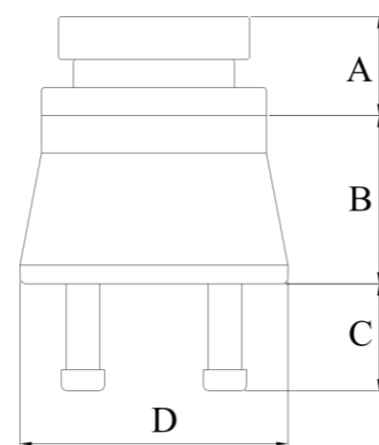


SU 圓型 (SU Round Type)

型号 Type	A			B	C								D	
	Φ65(MT2)	Φ95(MT3)	Φ95(MT4)		ER8	ER11	ER16	ER20	D4	C5	C6	C9		C12
SU80				185										Φ202
SU110														Φ288
SU165	72	82	111	225	75	73	94	94	60	75	81	96	100	Φ350
SU200														Φ396
SU250														Φ430
SU300														Φ490



SU 方型 (Su square type)

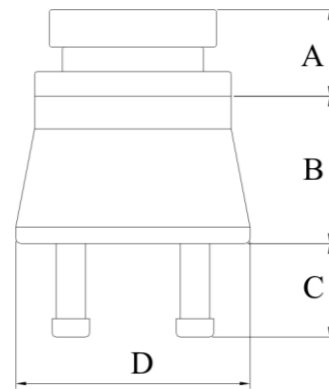


固定式 (Fixed type)

型号 Type	A			B	C								D	
	Φ65(MT2)	Φ95(MT3)	Φ95(MT4)		ER8	ER11	ER16	ER20	C5	C6	C9	C12		
SU100×165														342×288
SU120×200														390×302
SU120×300														490×304
SU160×450														585×285
SU220×360														520×380
SU250×500														660×400
SU170×200	72	82	111	225	75	73	94	94	75	81	96	100		客户指定
SU300×400														客户指定
SU400×550														客户指定
SU450×550														客户指定
SU150×800														客户指定
SU300×1000														客户指定

型号 Type	A			B	C						D		
	Φ65(MT2)	Φ95(MT3)	Φ95(MT4)		ER11	ER16	ER20	C6	C9	C12			
FA124	57	67	96	122									Φ207
FA200													Φ272
FA250													Φ322
FA160×250	72	82	111	108	48	62.5	65.5	54.3	67.3	73.1			326×236
FA250×320													410×340
FA200×400													500×280

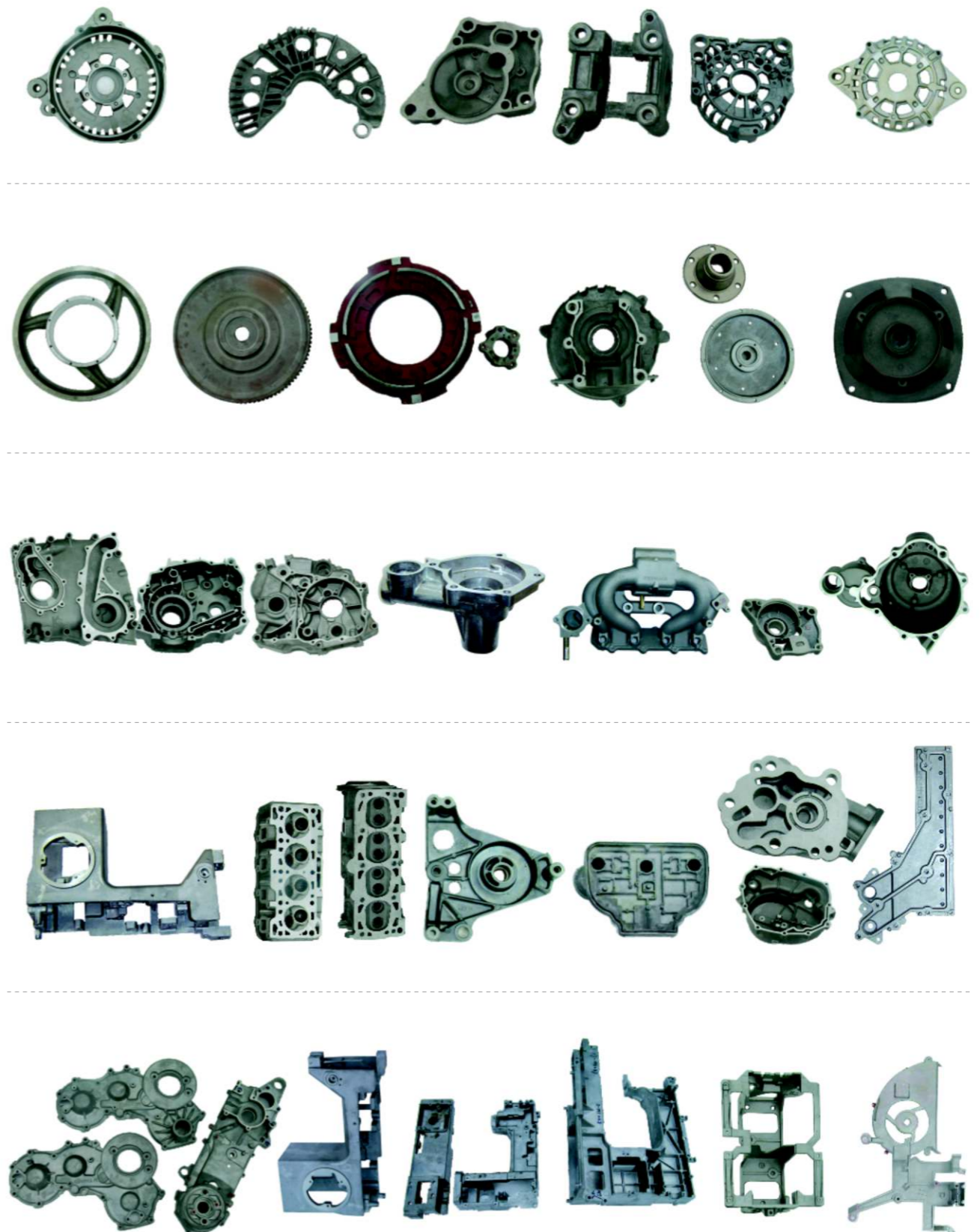
型号 Type	A			B	C								D	
	Φ65(MT2)	Φ95(MT3)	Φ95(MT4)		ER8	ER11	ER16	ER20	C5	C6	C9	C12		
FT52	67	76	105	72										Φ103
FT121				87.7	45									172×107
FT200	67	76	105	106		48	62.5	65.5		54.3	67.3	73.1		245×135
FT300														400×180
FT400	72	82	111	107.5		48	60.5	63.5		54.3	65.3	69.3		480×180

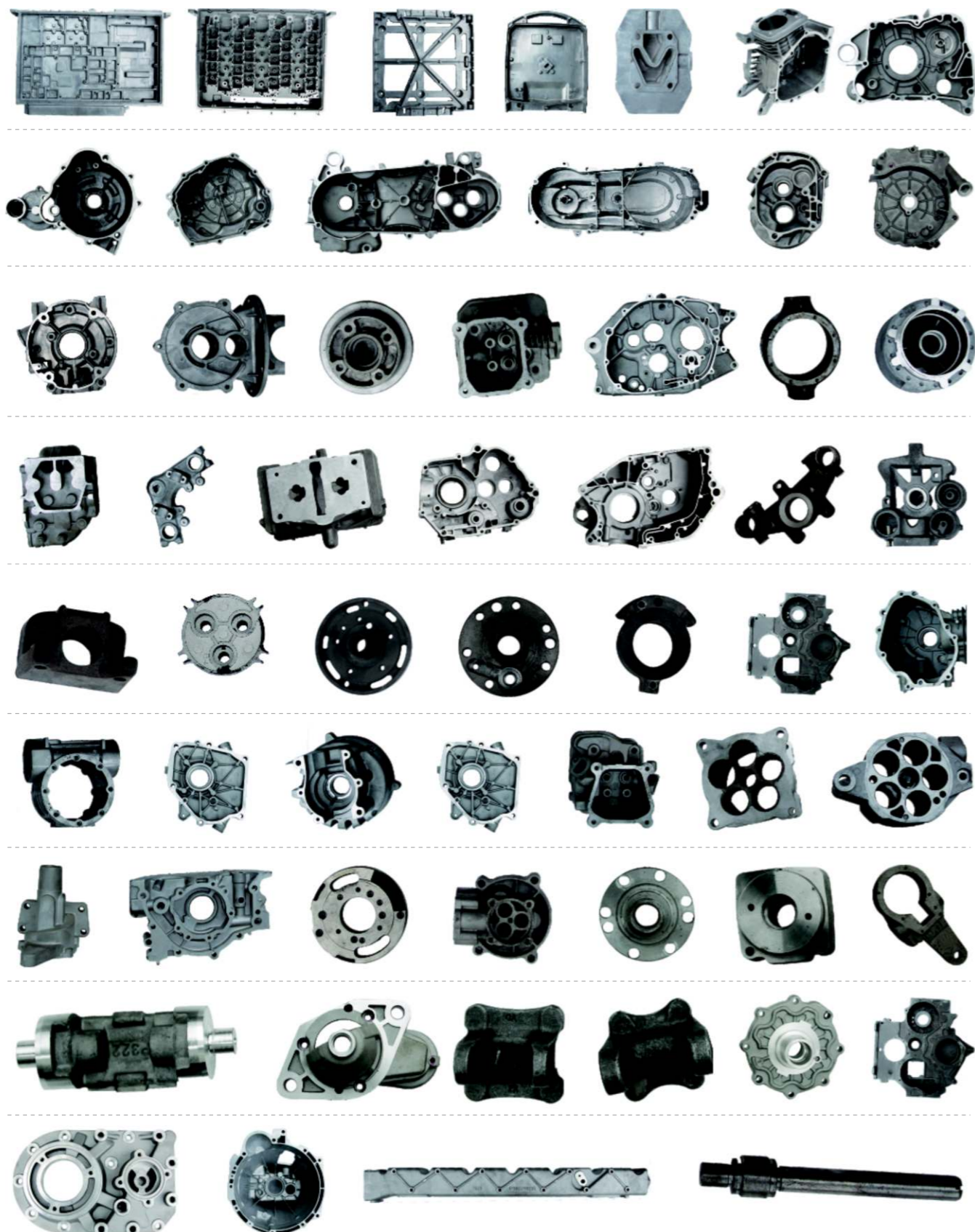


固定式(Fixed type)

型號 Type	A			B	C								D
	65(MT2)	95(MT3)	95(MT4)		ER8	ER11	ER16	ER20	C5	C6	C9	C12	
FU110													Φ230
FU165													Φ288
FU200													Φ340
FU250													Φ347
FU300													Φ434
FU100 × 165	72	82	111	256	43.5	48	62.5	65.5	44.5	56	64.5	71.5	282 × 228
FU120 × 200													332 × 244
FU120 × 300													434 × 248
FU160 × 450													585 × 285
FU220 × 360													520 × 380
FU250 × 500													660 × 400

型號 Type	A			B	C								D
	65(MT2)	95(MT3)	95(MT4)		ER8	ER11	ER16	ER20	C5	C6	C9	C12	
FB90													Φ138
FB130													Φ188
FB170													Φ236
FB210													Φ268
FB300	72	82	111	56				54				60	326 × 350
FB450													指定
FB130 × 260													340 × 210
FB300 × 400													指定





桌式导螺杆自动进刀攻牙机 Desk Lead Screw Automatic Feed Tapping Machine

规格	Specification	JTDM-16
工作台面有效尺寸	Table Diameter	Φ250
立柱外径	Column Diameter	Φ85
主轴外径	Spindle Diameter	Φ60
主轴锥度	Spindle Taper	MT2/JT6/ER20
主轴心至工作桌面的距离	Distance From Spindle To Table	200mm-650mm
主轴行程	Spindle Travel	65mm
主轴转速	Spindle Speed	500-750
主轴功率	Spindle power	2HP/4P
攻牙能力	Tapping Capacity(S45C)	M16



桌式油压自动进刀钻孔机床 Desk Hydraulic Automatic Feed Drilling Machine

规格	Specification	JTDZ-20
工作台面有效尺寸	Table Diameter	Φ250
立柱外径	Column Diameter	Φ85
主轴外径	Spindle Diameter	Φ60
主轴锥度	Spindle Taper	MT2/JT6/ER32
主轴心至工作桌面的距离	Distance From Spindle To Table	200mm-650mm
主轴行程	Spindle Travel	130mm
主轴转速	Spindle Speed	1000-2000
主轴功率	Spindle power	2HP/4P
最大钻孔能力	Max.Tapping Capacity	Φ20
标准压力	Hydrall Height	20Kg/cm ² (2MPa)



立式油压自动进刀钻孔机床

Vertical Hydraulic Automatic Feed Drilling Machine

规格	Specification	JDZ-25L
工作桌面有效尺寸	Table Diameter	Φ440
立柱外径	Column Diameter	Φ102
主轴外径	Spindle Diameter	Φ95
主轴锥度	Spindle Taper	MT3
主轴心至工作桌面的距离	Distance From Spindle To Table	100mm-1000mm
主轴行程	Spindle Travel	140mm
主轴转速	Spindle Speed	285-2150
主轴功率	Spindle power	2HP/6P
最大钻孔能力	Max.Tapping Capacity	(S45C)Φ25
标准压力	Hydrall Height	20Kg/cm ² (2MPa)
总重量	Weihgt	400kg



立式导螺杆自动进刀攻牙机

Vertical Lead Crew Automatic Feed Tapping Machine

规格	Specification	JDM-25L
工作桌面有效尺寸	Table Diameter	Φ440
立柱外径	Column Diameter	Φ102
主轴外径	Spindle Diameter	Φ95
主轴锥度	Spindle Taper	MT3
主轴心至工作桌面的距离	Distance From Spindle To Table	100mm-1000mm
主轴行程	Spindle Travel	70mm
主轴转速	Spindle Speed	定速
主轴功率	Spindle power	2HP/8P
最大攻牙能力	Max.Tapping Capacity	(S45C)M25
总重量	Weihgt	400kg



桌式油压自动进刀钻孔机床

Desk Hydraulic Automatic Feed Drilling Machine

规格	Specification	JTDZ-25
工作桌面有效尺寸	Table Diameter	Φ440
立柱外径	Column Diameter	Φ102
主轴外径	Spindle Diameter	Φ95
主轴锥度	Spindle Taper	MT3
主轴心至工作桌面的距离	Distance From Spindle To Table	300mm-850mm
主轴行程	Spindle Travel	140mm
主轴转速	Spindle Speed	285-2150
主轴功率	Spindle power	2HP/6P
最大钻孔能力	Max.Tapping Capacity	(S45C)Φ25
标准压力	Hydrall Height	20Kg/cm ² (2MPa)
总重量	Weihgt	500kg



桌式导螺杆自动进刀攻牙机

Desk Lead Crew Automatic Feed Tapping Machine

规格	Specification	JTDM-25
工作桌面有效尺寸	Table Diameter	Φ440
立柱外径	Column Diameter	Φ102
主轴外径	Spindle Diameter	Φ95
主轴锥度	Spindle Taper	MT3
主轴心至工作桌面的距离	Distance From Spindle To Table	300mm-850mm
主轴行程	Spindle Travel	70mm
主轴转速	Spindle Speed	定速
主轴功率	Spindle power	2HP/8P
最大攻牙能力	Max.Tapping Capacity	(S45C)M25
总重量	Weihgt	500kg



桌式油压自动进刀钻孔机

Desk Hydraulic Automatic Feed Drilling Machine

规格	Specification	JTDZ-35
工作台面有效尺寸	Table Diameter	Φ490
立柱外径	Column Diameter	Φ130
主轴外径	Spindle Diameter	Φ115
主轴锥度	Spindle Taper	MT4
主轴心至工作台面的距离	Distance From Spindle To Table	300mm-800mm
主轴行程	Spindle Travel	180mm
主轴转速	Spindle Speed	480-720
主轴功率	Spindle power	5HP/6P
最大钻孔能力	Max. Drilling Capacity	(S45C)Φ35
标准压力	Hydrall Height	20Kg/cm ² (2MPa)
总重量	Weihgt	850kg



桌式双联型钻攻机床

Desk Double Bits Drilling Machine

规格	Specification	JTDZ-25 / JTDZ-25
工作台面有效尺寸	Table Diameter	1120×550
立柱外径	Column Diameter	Φ102 / Φ102
主轴外径	Spindle Diameter	Φ95 / Φ95
主轴锥度	Spindle Taper	MT3 / MT3
主轴心至工作台面的距离	Distance From Spindle To Table	350-850mm / 350-850mm
主轴行程	Spindle Travel	140mm / 70mm
主轴转速	Spindle Speed	285-2150/定速
主轴功率	Spindle power	2HP/6P / 2HP/8P
主轴最大钻孔、攻牙能力	Max. Drilling, Tapping Capacity	(S45C)Φ25 / M25
总重量	Weihgt	900kg

注：双联型机床可以根据客户的需求机头可以任意组合；
如：JTDZ-25/JTDM-25 JTDZ-25/JTDM-30等



桌式导螺杆自动进刀攻牙机

Desk Lead Crew Automatic Feed Tapping Machine

规格	Specification	JTDM-30
工作台面有效尺寸	Table Diameter	Φ490
立柱外径	Column Diameter	Φ130
主轴外径	Spindle Diameter	Φ115
主轴锥度	Spindle Taper	MT4
主轴心至工作台面的距离	Distance From Spindle To Table	300mm-850mm
主轴行程	Spindle Travel	70mm
主轴转速	Spindle Speed	200-500
主轴功率	Spindle power	5HP/8P
最大攻牙能力	Max. Tapping Capacity	M30
总重量	Weihgt	800kg



桌式双联型钻攻机床

Desk Double Bits Drilling Machine

规格	Specification	JTDZ-35/JTDM30
工作台面有效尺寸	Table Diameter	1200×600
立柱外径	Column Diameter	Φ130/Φ130
主轴外径	Spindle Diameter	Φ115/Φ115
主轴锥度	Spindle Taper	MT4/MT4
主轴心至工作台面的距离	Distance From Spindle To Table	300mm-850mm/300mm-850mm
主轴行程	Spindle Travel	180mm/70mm
主轴转速	Spindle Speed	480-1700/200-500
主轴功率	Spindle power	5HP/8P/5HP/8P
标准压力	Hydraulic Height	20kg/cm ² (2MPa)
主轴最大钻孔、攻牙能力	Max. Drilling, Tapping Capacity	(S45C)Φ35 / M30
总重量	Weihgt	1500kg

注：双联型机床可以根据客户的需求机头可以任意组合；
如：JTDZ-35/JTDM-30 JTDZ-35/JTDZ-35等



桌式伺服钻孔机

Desk s Servo Drilling Machine

规格	Specification	NC-20
工作桌面有效尺寸	Table Diameter	Φ440
立柱外径	Column Diameter	Φ102
主轴外径	Spindle Diameter	Φ95
主轴锥度	Spindle Taper	MT3
主轴心至工作桌面的距离	Distance From Spindle To Table	300mm-850mm
主轴行程	Spindle Travel	140mm
主轴转速	Spindle Speed	285-2150
主轴功率	Spindle power	2HP/6P
主轴进刀	Spindle Feed	无极变速
最大钻孔能力	Max.Tapping Capacity	(S45C)Φ20
总重量	Weihgt	600kg

备注/Remarks: 可选配攻牙功能/Optional tapping function



单机头龙门钻孔机

Single Head Gantry Drilling Machine

规格	Specification	BK600-90L-1
工作桌面有效尺寸	Table Diameter	600×580
主轴外径	Spindle Diameter	Φ90
主轴锥度	Spindle Taper	MT3
主轴行程	Spindle Travel	140mm
主轴转速	Spindle Speed	定速
主轴功率	Spindle power	3HP-4P
最大钻孔能力	Max.Drilling Capacity	(S45C)Φ35
标准压力	Hydrall Height	20Kg/cm ² (2MPa)
总重量	Weihgt	800kg



桌式伺服钻孔机

Desk s Servo Drilling Machine

规格	Specification	NC-30
工作桌面有效尺寸	Table Diameter	Φ490
立柱外径	Column Diameter	Φ130
主轴外径	Spindle Diameter	Φ115
主轴锥度	Spindle Taper	MT4
主轴心至工作桌面的距离	Distance From Spindle To Table	300mm-800mm
主轴行程	Spindle Travel	160mm
主轴转速	Spindle Speed	选配
主轴功率	Spindle power	选配
最大钻孔能力	Max.Drilling Capacity	(S45C)Φ30
主轴进刀	Spindle Feed	无极变速
总重量	Weihgt	850kg

备注/Remarks: 可选配攻牙功能/Optional tapping function



龙门式一立三卧攻牙专用机

Gantry type one-vertical three-horizontal tapping special machine

规格	Specification	BK1120-75L50W-4
工作桌面有效尺寸	Table Dimension	1120×700
主轴外径	Spindle Diameter	Φ75 Φ50
主轴锥度	Spindle Taper	MT3 JT6
主轴心至工作桌面距离	Distance From Spindle to Table	500mm 165mm
主轴行程	Spindle Travel	70mm 50mm
主轴转速	Spindle Speed	500 500
主轴功率	Spindle power	2HP-8P 1HP-8P



三机头卧式钻孔专用机

Three-head horizontal drilling special machine

规格	Specification	TK960-90W/60W/60W-3
工作桌面有效尺寸	Table Dimension	960 580
主轴外径	Spindle Diameter	Φ60 90 Φ60
主轴锥度	Spindle Taper	JT6 MT4 JT6
主轴心至工作桌面距离	Distance From Spindle to Table	200mm 250mm 200mm
主轴行程	Spindle Travel	130mm 150mm 130mm
主轴转速	Spindle Speed	1300 1400 1300
主轴功率	Spindle power	2HP-4P 5HP-4P 2HP-4P
标准压力	Hydraulic Height	20Kg/cm ² (2MPa)



三机头卧式攻牙专用机

Three-head horizontal tapping special machine

规格	Specification	TK1600-1130-95W-3
工作桌面有效尺寸	Table Dimension	1600 1130
主轴外径	Spindle Diameter	Φ95
主轴锥度	Spindle Taper	MT3
主轴心至工作桌面距离	Distance From Spindle to Table	200mm
主轴行程	Spindle Travel	70mm
主轴转速	Spindle Speed	600
主轴功率	Spindle power	3HP-8P



八工位转盘铣钻机床

Eight-station rotary table milling machine tool



型号	Model number	TK2900*2500*7L*3W*EXT600-8
盘面	Table	Φ1200
主轴外径	Spindle Diameter	Φ120/Φ150
主轴锥度	Spindle Taper	BT30/BT40/BT50
主轴心至盘面的距离	Distance From Spindle To Table	400mm
主轴行程	Spindle Travel	140mm
主轴转速	Spindle Speed	1000-2000
主轴功率	Spindle power	4HP/4P
钻孔能力	Drilling Capacity(S45C)	Φ35
攻牙能力	Tapping Capacity(S45C)	M30
多轴器	Multi-spindle tool	GFA200

数控机床系列

CNC machine tool series



方箱数控机床特点：主軸鋼性好，行程大，重複定位精度高，採用數控系統編程，通熟易操作

NC-25桌式方箱数控钻孔机床

NC-25 Table Type Square box NC drilling machine

規格	Specification	NC-25
床身	Bed	TK550(焊接)
工作臺面有效尺寸	Table Dimension	Φ440
主軸鼻端至工作臺面距離	Distance from nose end of spindle to worktable	250mm-650mm
主軸外徑	Spindle Diameter	Φ95
主軸錐度	Spindle Taper	MT3
主軸行程	Spindle Travel	400mm
主軸轉速	Spindle speed	标配300-1500RPM(變頻調速) (可定制)
最大鑽孔能力	Max. Tapping Capacity	(S45C)Φ25
方箱立柱線軌	Square box rail	HIWIN/PMI HGH30CA2R760ZAH
方箱立柱絲杆	Square box stud screw	HIWIN/PMI R25-10T3
主軸功率	Spindle power	3HP/6P
進給功率	Feed power	1.5KW伺服
快進速度	Fast forward speed	30m/min
控制系統	Control System	達風數控系統
定位精度	Positioning accuracy	0.01
重複定位精度	Repeatable positioning accuracy	0.005

備註：可選配攻牙功能



NC-45桌式方箱数控钻孔机床

NC-45 Table Type Square box NC drilling machine

規格	Specification	NC-45
床身	Bed	TK700(鑄件)
工作臺面有效尺寸	Table Dimension	Φ550
主軸鼻端至工作臺面距離	Distance from nose end of spindle to worktable	310mm-810mm
主軸外徑	Spindle Diameter	Φ115
主軸錐度	Spindle Taper	MT4
主軸行程	Spindle Travel	500mm
主軸轉速	Spindle speed	标配300-1500RPM(變頻調速) (可定制)
最大鑽孔能力	Max. Tapping Capacity	(S45C)Φ45
方箱立柱線軌	Square box rail	HIWIN/PMI RGH35
方箱立柱絲杆	Square box stud screw	HIWIN/PMI R40
主軸功率	Spindle power	5.5KW
進給功率	Feed power	2.0KW伺服
快進速度	Fast forward speed	30m/min
控制系統	Control System	達風數控系統
定位精度	Positioning accuracy	0.01
重複定位精度	Repeatable positioning accuracy	0.005

備註：可選配攻牙功能



NC-35桌式方箱数控钻孔机床

NC-35 Table Type Square box NC drilling machine

規格	Specification	NC-35
床身	Bed	TK600(焊接)
工作臺面有效尺寸	Table Dimension	Φ510
主軸鼻端至工作臺面距離	Distance from nose end of spindle to worktable	389mm-839mm
主軸外徑	Spindle Diameter	Φ115
主軸錐度	Spindle Taper	MT4
主軸行程	Spindle Travel	450mm
主軸轉速	Spindle speed	标配300-1500RPM(變頻調速) (可定制)
最大鑽孔能力	Max. Tapping Capacity	(S45C)Φ35
方箱立柱線軌	Square box rail	HIWIN/PMI HGH35
方箱立柱絲杆	Square box stud screw	HIWIN/PMI R32
主軸功率	Spindle power	5HP/8P
進給功率	Feed power	1.8KW伺服
快進速度	Fast forward speed	30m/min
控制系統	Control System	達風數控系統
定位精度	Positioning accuracy	0.01
重複定位精度	Repeatable positioning accuracy	0.005

備註：可選配攻牙功能



NC-25-3三轴数控钻孔机床

NC-25-3 THREE-AXIS NC drilling machine tool

規格	Specification	NC-25-3
床身	Bed	TK550(焊接)
工作臺面有效尺寸	Table Dimension	230X300
主軸鼻端至工作臺面距離	Distance from nose end of spindle to worktable	250mm-650mm
主軸外徑	Spindle Diameter	Φ95
主軸錐度	Spindle Taper	MT3
主軸行程(Z軸)	Spindle Travel	400mm
X軸行程	X-axis travel	200mm
Y軸行程	Y-axis travel	200mm
主軸轉速	Spindle speed	标配300-1500RPM(變頻調速) (可定制)
最大鑽孔能力	Max. Tapping Capacity	(S45C)Φ25
方箱立柱線軌	Square box rail	HIWIN/PMI HGH30CA2R760ZAH
方箱立柱絲杆	Square box stud screw	HIWIN/PMI R25-10T3
主軸功率	Spindle power	3HP/6P
進給功率	Feed power	1.5KW伺服
快進速度	Fast forward speed	30m/min
控制系統	Control System	達風數控系統
定位精度	Positioning accuracy	0.01
重複定位精度	Repeatable positioning accuracy	0.005

備註：可選配攻牙功能



台式机床系列

CNC machine tool series



ZK-20/ZK-25 台式数控钻床 Zk-20/ZK-25 bench CNC drilling machine

规格	Specification	ZK-20	ZK-25
主轴中心到立柱表面	SPINDLE CENTER TO COLUMN surface	245mm	235mm
工作台面有效尺寸	Table Dimension	290mm*320mm	390mm*430mm
主轴鼻端至工作台面距离	Distance from nose end of spindle to worktable	380mm-650mm	380mm-800mm
主轴外径	Spindle Diameter	Φ70	Φ75
立柱外径	Outside diameter of column	Φ85	Φ102
主轴锥度	Spindle Taper	MT 2	MT 3
主轴行程	Spindle Travel	85mm	85mm
主轴转速	Spindle speed	645/918/1250/1690	645/918/1250/1690
最大钻孔能力	Max. Tapping Capacity	Φ20	Φ25
主轴功率	Spindle power	1.5KW/4极	1.5KW/4极
进给电机	Feed Servo Motor	1.0KW 12Nm	1.5KW 12Nm
重量	Weight	220kg	340kg



台式齿轮牙距自动攻丝机 Table type automatic tapping machine for tooth pitch of gears

规格	Specification	JT-6516
工作台面有效尺寸	Table Diameter	340mm*340mm
立柱外径	Column Diameter	Φ90
主轴外径	Spindle Diameter	Φ70
主轴锥度	Spindle Taper	MT2
主轴心至工作台面的距离	Distance From Spindle To Table	100mm-700mm
主轴行程	Spindle Travel	65mm
主轴转速	Spindle Speed	250 400 590
主轴功率	Spindle power	1.5KW/6P
最大攻牙能力	Maximum tapping capacity	(S45C)M16
总重量	Weight	250kg



台式齿轮牙距自动攻丝机 Table type automatic tapping machine for tooth pitch of gears

规格	Specification	JT-4508
工作台面有效尺寸	Table Diameter	220mm*225mm
立柱外径	Column Diameter	Φ60
主轴外径	Spindle Diameter	Φ42
主轴锥度	Spindle Taper	B16
主轴心至工作台面的距离	Distance From Spindle To Table	100mm-700mm
主轴行程	Spindle Travel	45mm
主轴转速	Spindle Speed	420 760 1340
主轴功率	Spindle power	1HP/4P
最大攻牙能力	Maximum tapping capacity	(S45C)M8
总重量	Weight	140kg



台式齿轮牙距自动攻丝机 Table type automatic tapping machine for tooth pitch of gears

规格	Specification	JT-6532
工作台面有效尺寸	Table Diameter	340mm*430mm
立柱外径	Column Diameter	Φ95
主轴外径	Spindle Diameter	Φ85
主轴锥度	Spindle Taper	MT3
主轴心至工作台面的距离	Distance From Spindle To Table	100mm-700mm
主轴行程	Spindle Travel	65mm
主轴转速	Spindle Speed	80 150 280
主轴功率	Spindle power	2.2KW/8P
最大攻牙能力	Maximum tapping capacity	(S45C)M32
总重量	Weight	380kg



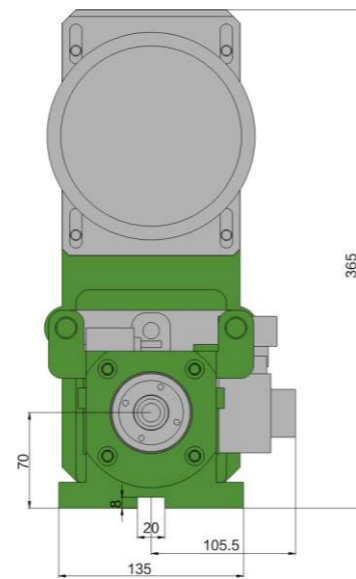
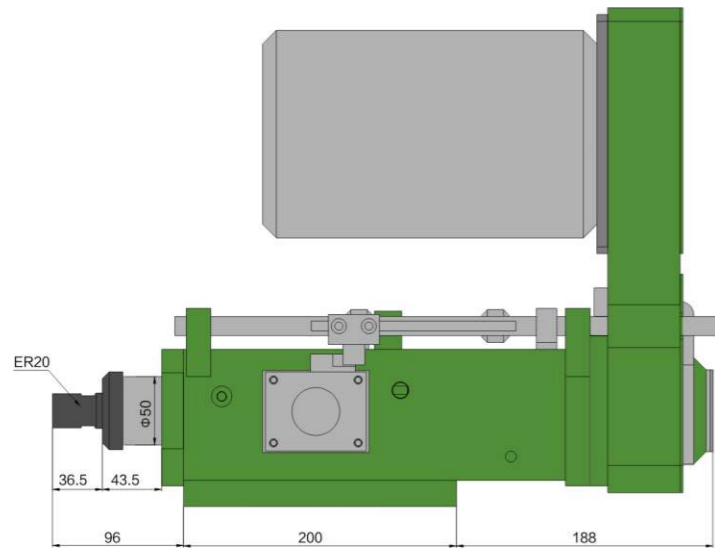
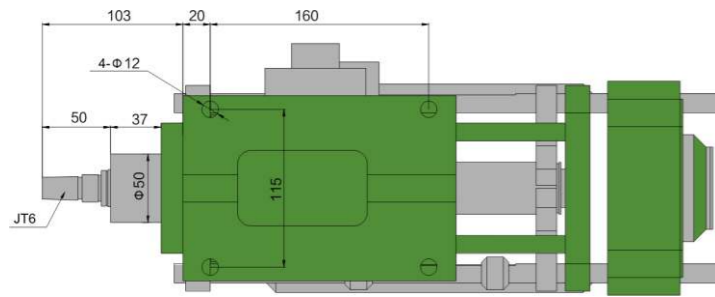
动力头系列

Power Head series



BHD5空压/油压钻孔动力头

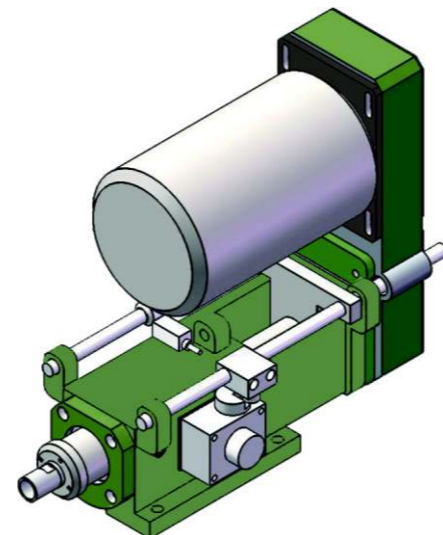
BHD5 Air pressure/Oil pressure drilling power head



BHD5-85空压/油压钻孔动力头

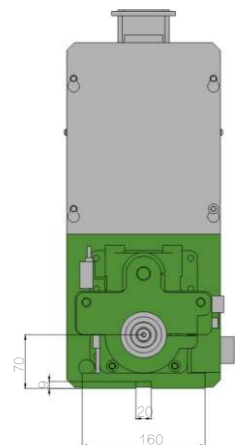
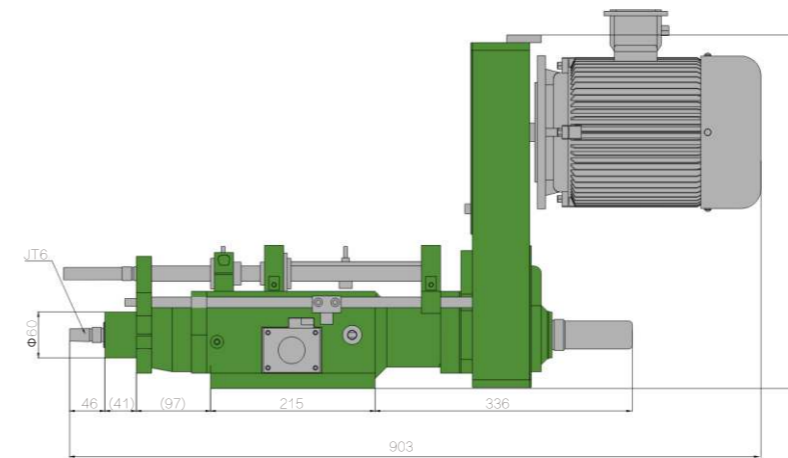
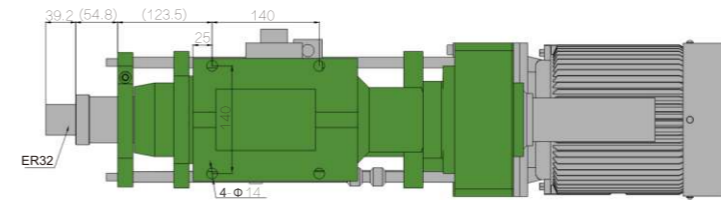
BHD5-85 Air pressure/Oil pressure drilling power head

规格	Model	BHD5-85
鑽孔能力	Drilling Capacity(S45C)	Φ 13mm
最大行程	Max.Stroke	85mm
最高轉速	Max.RPM	2500RPM
推進壓力	Propel Pressure	空壓(A)5~8kg/cm ² 油壓(H)20~25kg/cm ²
油缸面積	Cylinder Diameter	前進(F)21.8kg/cm ² 後退(B)13.5kg/cm ²
馬力	Horsepower,3 Phase	1HP,220V/380V
傳動皮帶	Transmission Belt	5M605或5M-655
總重	Net Weight	33kg
主軸軸承	Spindle Beaing	6004ZZ × 3 6004DDU × 1
皮帶輪軸承	Pulley Bearing	6007ZZ × 2
前蓋油封	Front Cover Seal	50 × 60 × 8
活塞O型環	Piston O-ring	油壓55 × 65 × 5, 空壓55 × 5
前塞O型環	Front Cover O-ring	68 × 3
後蓋油封	Back Cover Seal	38 × 50 × 8
主軸錐度	Spindle Taper	JT6/ER20
		Roundness: ≤ 0.003mm



BHD6空压/油压钻孔动力头

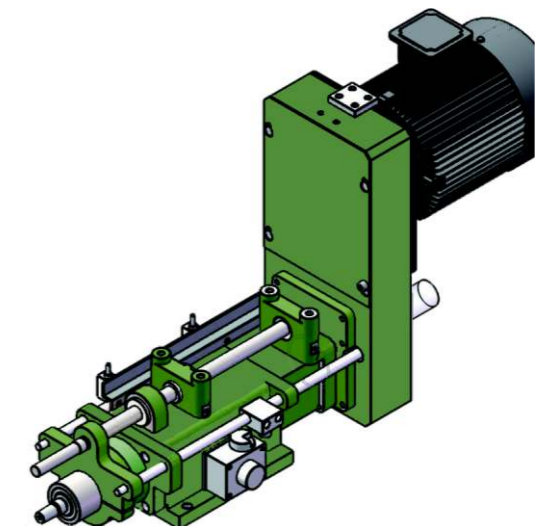
BHD6 Air pressure/Oil pressure drilling power head



BHD6-130空压/油压钻孔动力头

BHD6-130 Air pressure/Oil pressure drilling power head

规格	Model	BHD6-130
鑽孔能力	Drilling Capacity(S45C)	Φ 20mm
最大行程	Max.Stroke	130mm
最高轉速	Max.RPM	2000RPM
推進壓力	Propel Pressure	空壓(A)10~15kg/cm ² 油壓(H)20~30kg/cm ²
氣缸面積	Cylinder Diameter	前進(F)39.8kg/cm ² 後退(B)35.3kg/cm ²
馬力	Horsepower,3 Phase	2HP,220V/380V
傳動皮帶	Transmission Belt	A2 × Φ 100, 8M × 40T × 40W
總重	Net Weight	70kg
主軸軸承	Spindle Bearing	6004ZZ × 1,32004 6005DDU × 1,600ZZ × 1,32005
皮帶輪軸承	Pulley Bearing	6207ZZ × 2
前蓋油封	Front Cover Seal	60 × 70 × 10
活塞O型環	Piston O-ring	油壓80 × 90 × 6, 空壓80 × 5
前塞O型環	Front Cover O-ring	90 × 2
後蓋油封	Back Cover Seal	55 × 65 × 8
主軸錐度	Spindle Taper	JT6/ER32
		Roundness: ≤ 0.003mm



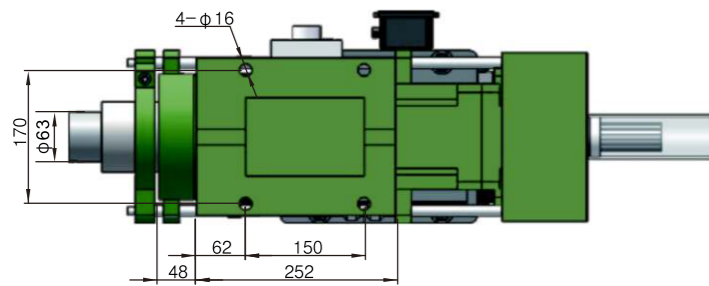
动力头系列

Power Head series



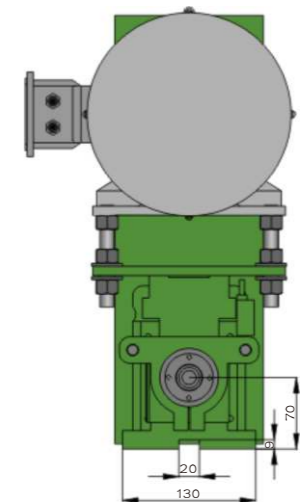
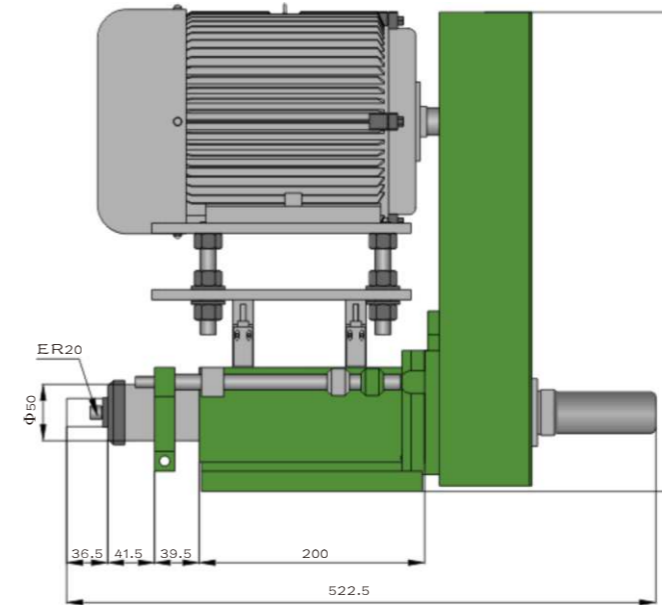
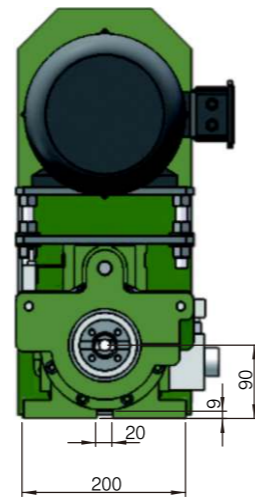
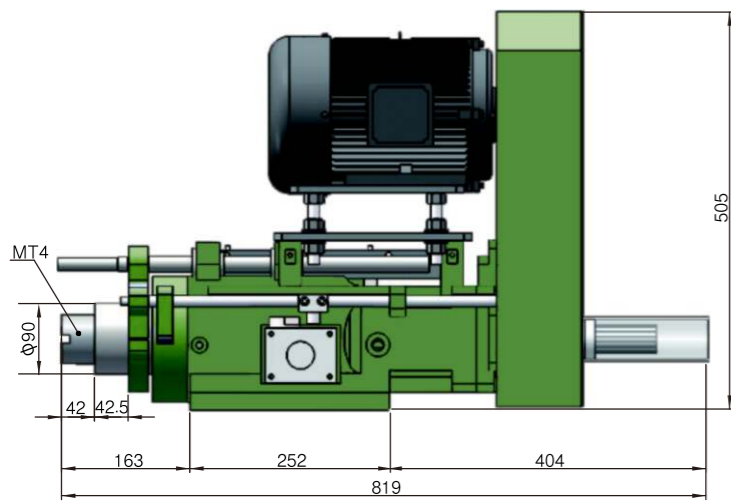
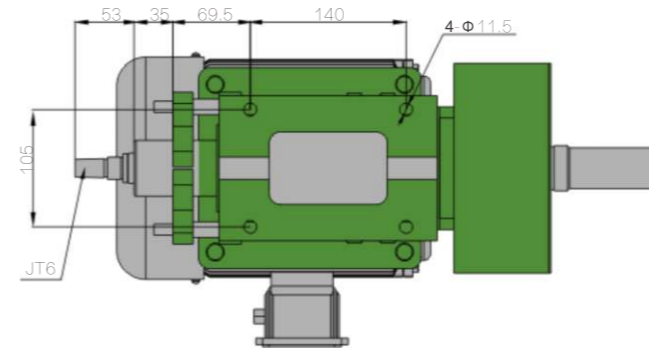
BHD8油压钻孔动力头

BHD8 Oil pressure drilling power head



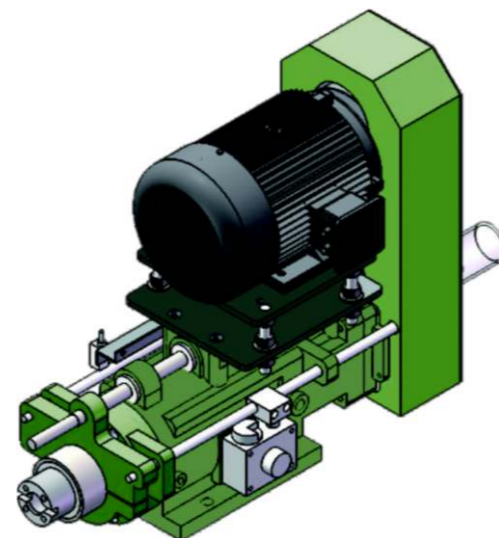
N6攻牙动力头

N6 Tapping Head



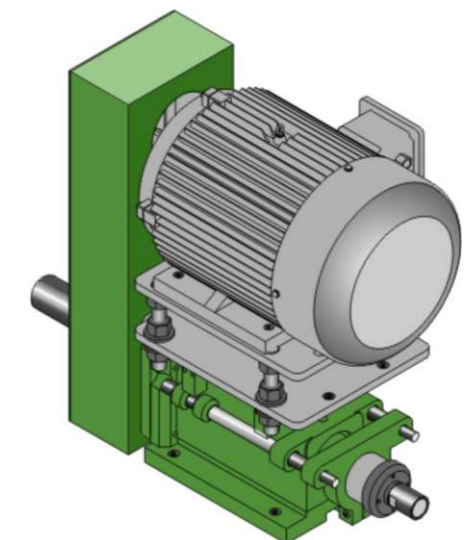
BHD8-150油压动力头 BHD8-150 Hydraulic Power Head

规格	Model	BHD8-150
钻孔能力	Drilling Capacity(S45C)	Φ 35mm
最大行程	Max.Stroke	150mm
最高转速	Max.RPM	1500RPM
推进压力	Propel Pressure	油压(H)20~35kg/cm2
油缸面积	Cylinder Diameter	前进(F)72.4kg/cm2 后退(B)59.1kg/cm2
马力	Horsepower,3 Phase	3HP,220V/380V
传动皮带	Transmission Belt	B2×Φ 140,8M×52T×45W
总重	Net Weight	100kg
主轴轴承	Spindle Bearing	6008ZZ×1,32008 6010DDU×1,6010ZZ×1,32010
皮带轮轴承	Pulley Bearing	6011ZZ×2
前盖油封	Front Cover Seal	90×110×8
活塞O型环	Piston O-ring	油压 110×125×9
前盖O型环	Front Cover O-ring	125×2
后盖油封	Back Cover Seal	80×100×10
主轴锥度	Spindle Taper	MT4
		Roundness: ≤0.003mm



N6-65攻牙动力头 N6 Tapping Head

规格	Model	N6-65
攻牙能力	Drilling Capacity(S45C)	M12
最大行程	Max.Stroke	65mm
螺旋导程	Thread Guide Pitch	0.4-2mm
马力	Horsepower,3 Phase	1HP,220V/380V
传动皮带	Transmission Belt	8M×35T×20W
总重	Net Weight	40kg
主轴轴承	Spindle Bearing	6004ZZ×3
皮带轮轴承	Pulley Bearing	6007ZZ×3
主轴油封	Spindle Seal	TC27×42×6,TC50×60×8
主轴锥度	Spindle Taper	ER20/JT6



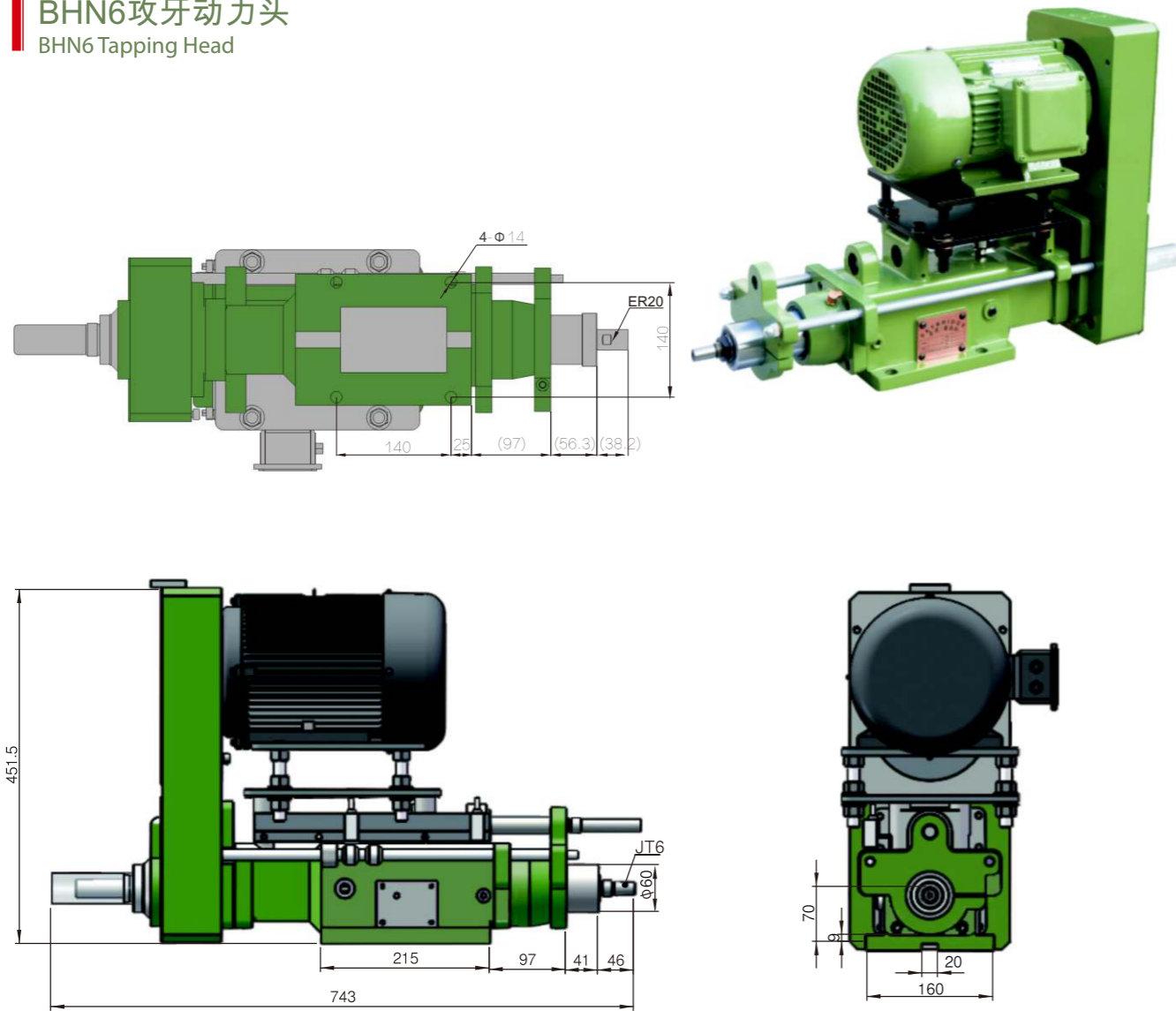
动力头系列

Power Head series



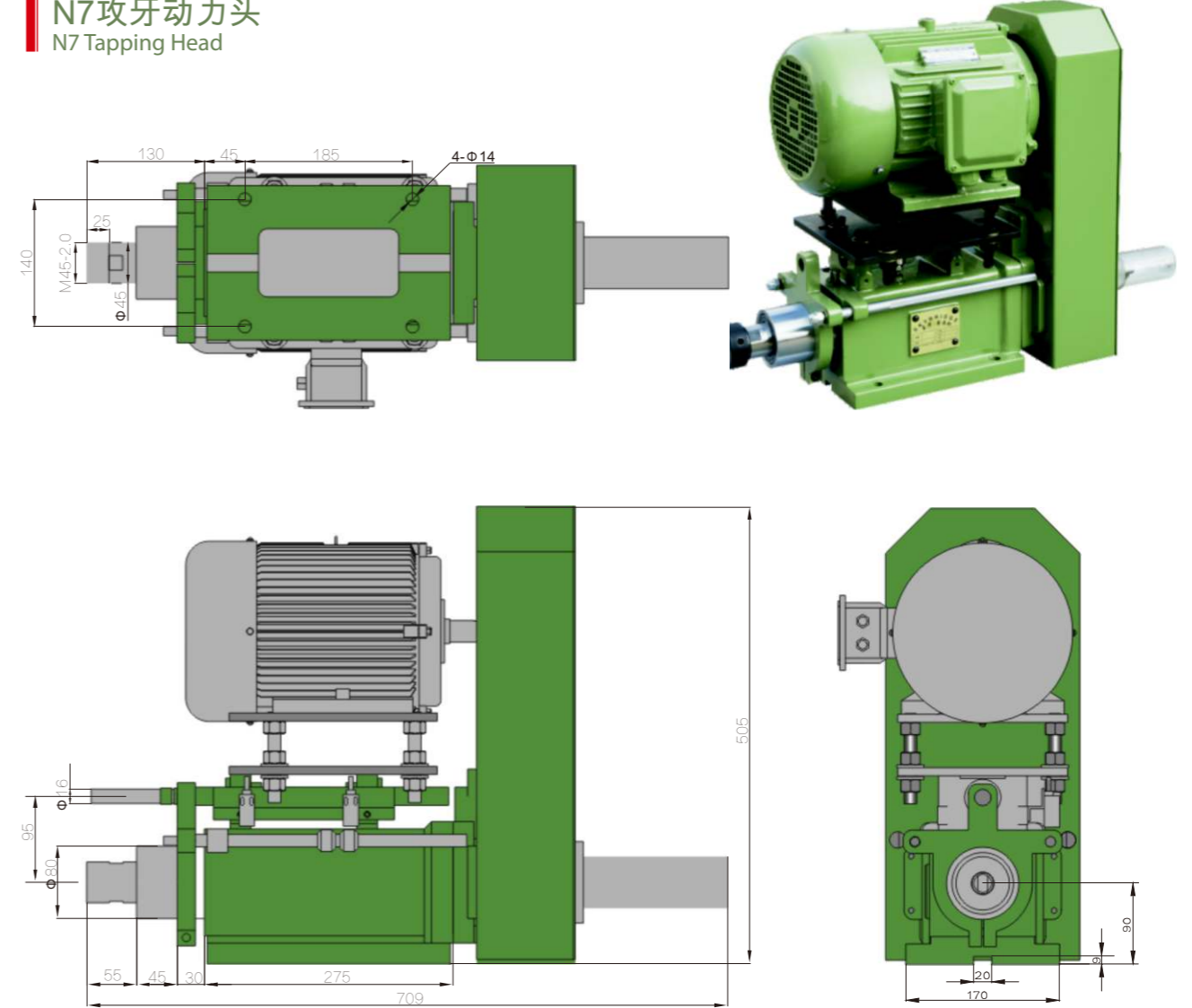
BHN6攻牙动力头

BHN6 Tapping Head



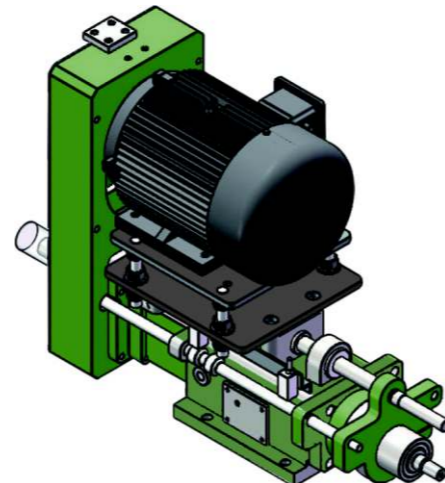
N7攻牙动力头

N7 Tapping Head



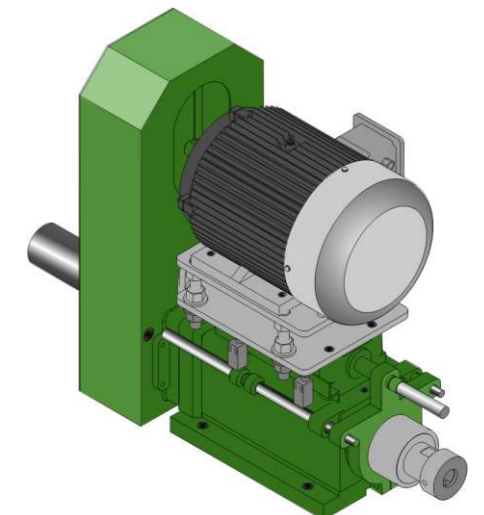
BHN6-65攻牙动力头 BHN6-65 Tapping Head

规格	Model	BHN6-65
攻牙能力	Drilling Capacity(S45C)	M16
最大行程	Max.Stroke	65mm
螺旋导程	Thread Guide Pitch	0.4-2mm
马力	Horsepower,3 Phase	2HP,220V/380V
传动皮带	Transmission Belt	A2×Φ 100,8M×40T×40W
总重	Net Weight	70kg
主轴轴承	Spindle Bearing	6004ZZ×1,3204 6005DDU×1,6005ZZ×1,32005
皮带轮轴承	Pulley Bearing	6207ZZ×2
前盖油封	Front Cover Seal	60×70×10
后盖油封	Back Cover Seal	55×65×8
主轴锥度	Spindle Taper	JT6/ER20
		Roundness: ≤0.003mm



N7-85攻牙动力头 N7 Tapping Head

规格	Model	N7-85
攻牙能力	Drilling Capacity(S45C)	M30
最大行程	Max.Stroke	85mm
螺旋导程	Thread Guide Pitch	0.7-3mm
马力	Horsepower,3 Phase	3HP,220V/380V
传动皮带	Transmission Belt	8M×55T×40W
总重	Net Weight	75kg
主轴轴承	Spindle Bearing	6008ZZ-3
皮带轮轴承	Pulley Bearing	6011ZZ-2/6211ZZ-1
主轴油封	Spindle Seal	800×100×10
主轴锥度	Spindle Taper	MT3

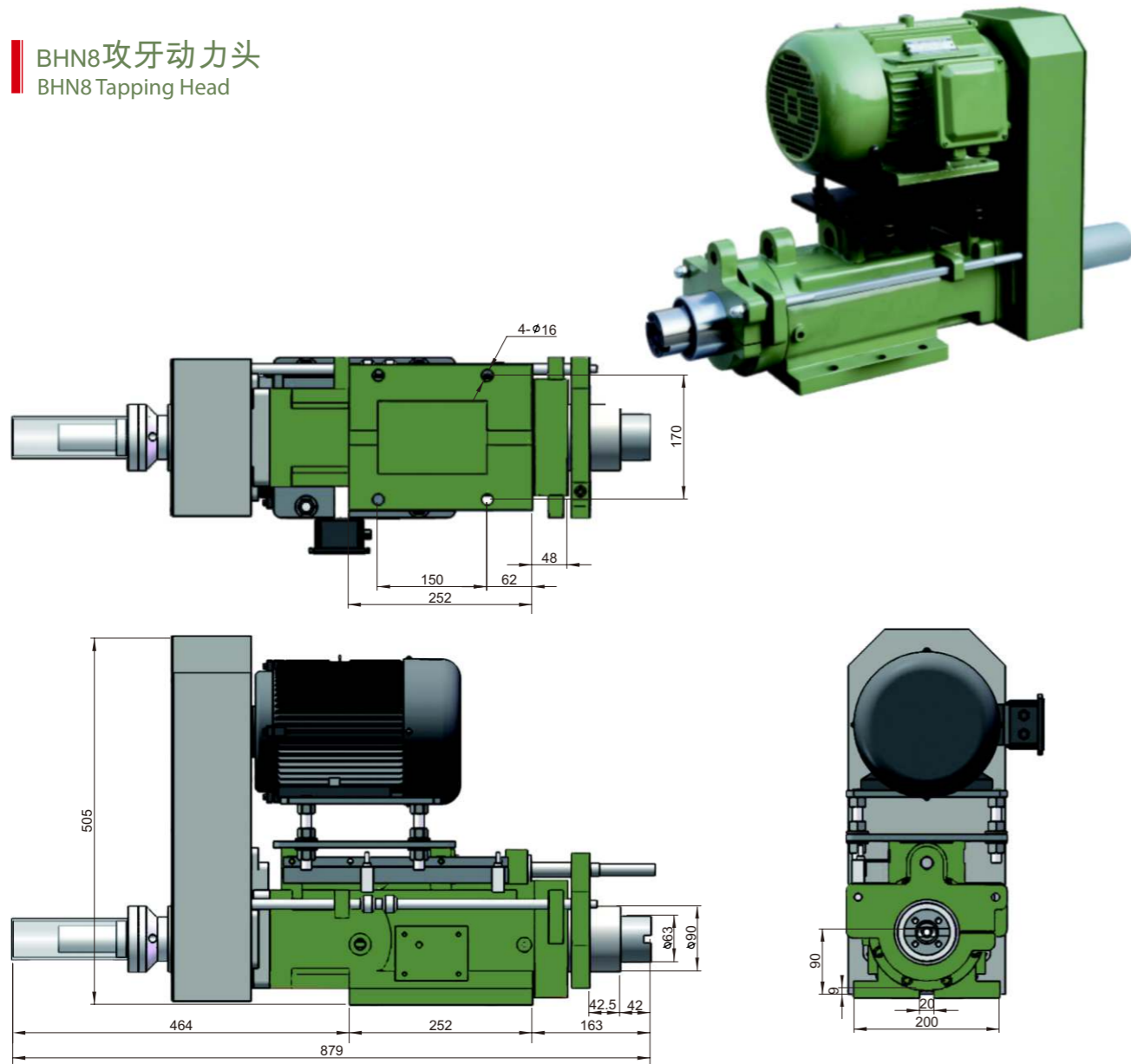


动力头系列

Power Head series

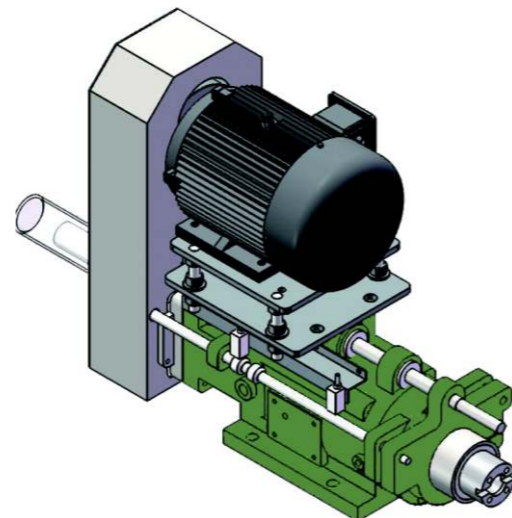


BHN8攻牙动力头
BHN8 Tapping Head

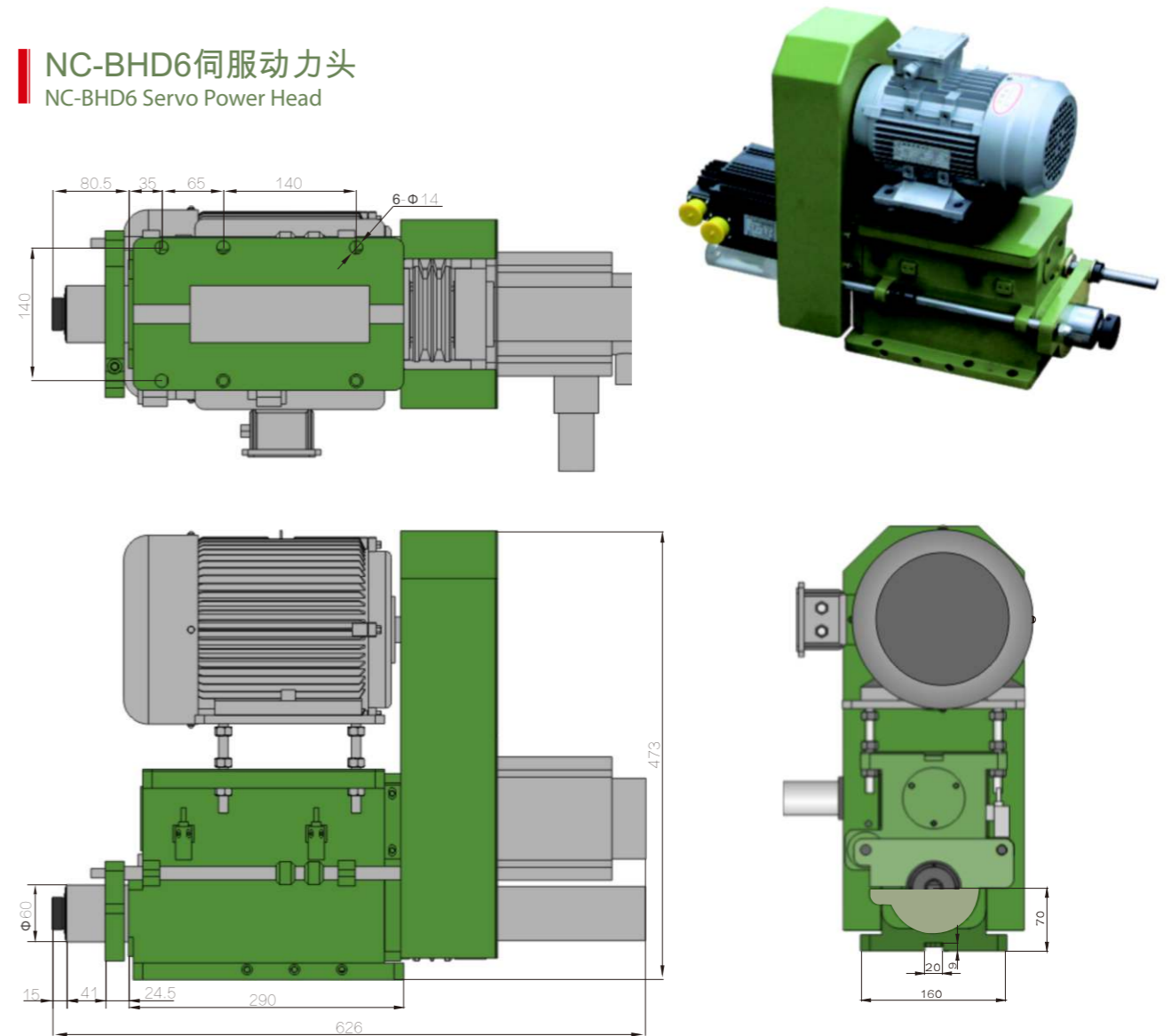


BHN8-85攻牙动力头 BHN8-85 TAPPING HEAD

规格	Model	BHN8-85
攻牙能力	Tapping Capacity(S45C)	M40
最大行程	Max.Stroke	85mm
螺距导程	Thread Guide Pitch	0.7~2.5mm
马力	Horsepower,3 Phase	3HP,220V/380V
传动皮带	Transmission Belt	B2×Φ140,8M×52T×45W
总重	Net Weight	95Kg
主轴轴承	Spindle Bearing	6008ZZ×1, 32008 6010DDU×1,6010ZZ×1,32010
皮带轮轴承	Pulley Bearing	6011ZZ×2
前盖油封	Front Cover Seal	90×110×8
后盖油封	Back Cover Seal	80×100×10
主轴锥度		MT4
		Roundness:≤0.003mm

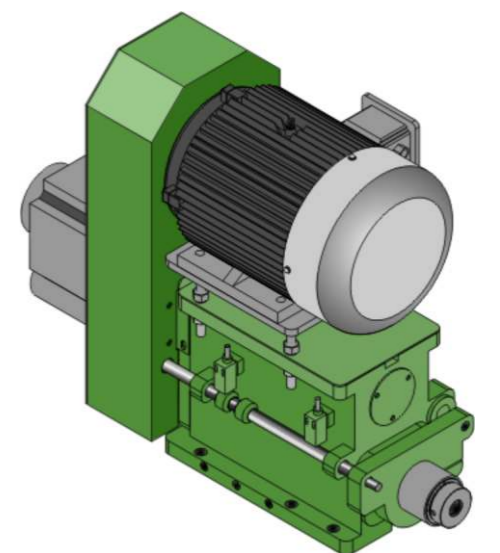


NC-BHD6伺服动力头
NC-BHD6 Servo Power Head



NC-BHD6伺服动力头 NC-BHD6 Servo Power Head

规格	Model	NC-BHD6-100	NC-BHD6-100H
鑽孔能力	Drilling Capacity(S45C)	Φ16mm	
最大行程	Max.Stroke	100mm	
最高转速	Max.RPM	2000RPM	5000RPM
马力	Horsepower,3 Phase	2HP × 4,220V/380V	
传动皮带	Transmission Belt	A2 × Φ100,8M × 52T × 40W	
总重	Net Weight	80kg	
主轴轴承	Spindle Bearing	6004ZZ × 1,32004 × 1	7005 × 3
		6005DDU × 1,32005 × 1	7004 × 2
皮带轮轴承	Pulley Bearing	6207ZZ × 2	
滚珠丝杆轴承	Ballscrew Bearing	6204ZZ × 1,7204 × 2	
主轴油封	Spindle Seal	60 × 70 × 10	
主轴锥度	Spindle Taper	MT2	

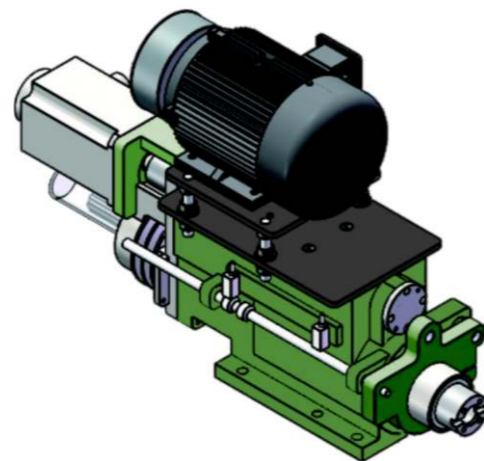
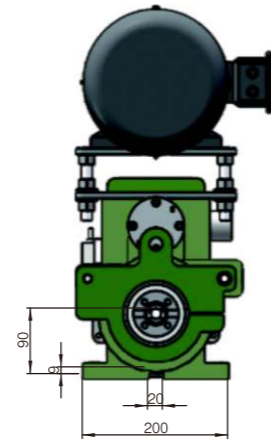
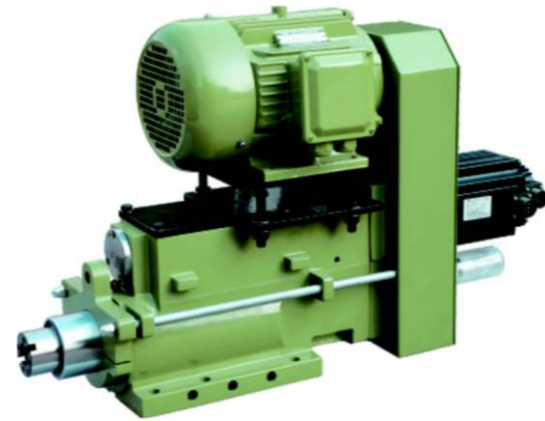
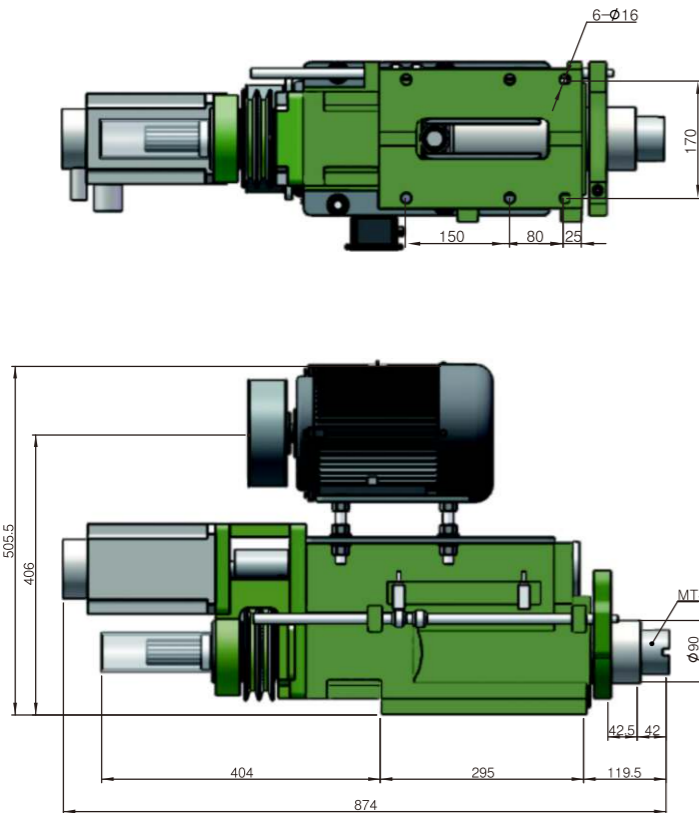


动力头系列

Power Head series



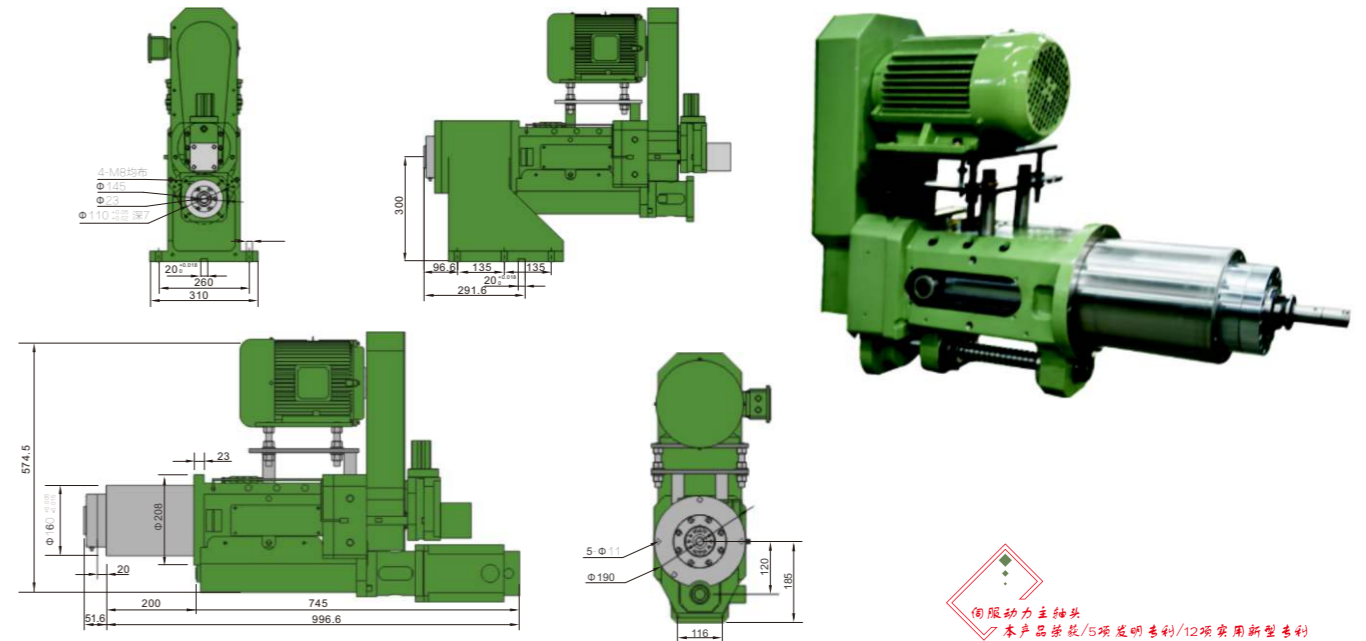
NC-BHD8伺服动力头 NC-BHD8 Servo Power Head



NC-BHD8-150 伺服钻孔、攻牙动力头 NC-BHD8-150 Drilling/Tapping Spindle Head-Servo Type

规格	Model	NC-BHD8-150
鑽孔(攻牙)能力	Drilling Capacity(S45C)	Φ35mm(M30)
最大行程	Max.Stroke	150mm
最高轉速	Max.RPM	1500RPM
馬力	Horsepower,3 Phase	3HP × 6,220V/380V
傳動皮帶	Transmission Belt	B2 × Φ 140,8M × 52T × 40W
總重	Net Weight	110kg
主軸軸承	Spindle Bearing	6008ZZ × 1,32008 6010DDU × 1,6010ZZ × 1,32010
皮帶輪軸承	Pulley Bearing	6011ZZ × 2
滾珠絲杆軸承	Ballscrew Bearing	6205A × 3,6205ZZ × 2
主軸油封	Spindle Seal	90 × 110 × 8
主軸錐度	Spindle Taper	MT4

NC25伺服动力主轴外形尺寸图 NC25 Servo Power Spindle Size Specification



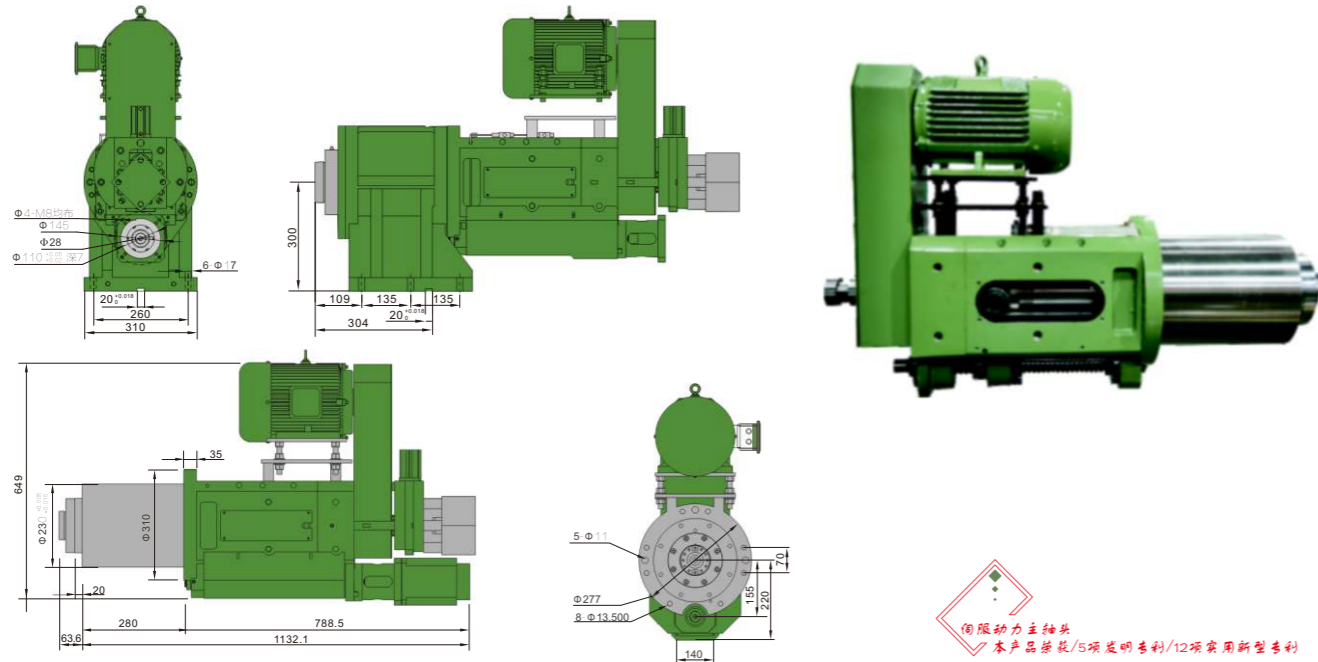
NC25伺服动力主轴头配置選型表

產品編碼: NC25-BT30-001至005 (001-002為鑽攻兩用型)

序號 Serial number	配置內容 Configuration content	001標準配置 001 standard configuration	002標準配置 002 standard configuration	003標準配置 003 standard configuration	004標準配置 004 standard configuration	005標準配置 005 standard configuration
1	主軸頭顏色 蘋果綠 The spindle head in apple green	●	●	●	●	customize
2	主軸電機為伺服電機2.9KW 參照主軸轉速與伺服電機轉速對照表 Spindle motor with AC servo motor, 2.9KW Motor specifics can see reference table in P...	●	●	×	×	Customer offer
3	2.2-1.5KW主軸電機一般交流電機 Spindle motor with AC induction motor,2.2KW-1.5KW.	×	×	參照一般交流電機 轉速配置對照表	參照一般交流電機轉 速配置對照表	Customer offer
4	0.85KW主軸進給驅動伺服電機 Feed motor with AC servo motor,0.85KW	●	●	●	●	Customer offer
5	主軸進給快速移位速度 Maximum feed speed	24m/min	24m/min	24m/min	24m/min	24m/min
6	主軸外徑、主軸型式BT30 Spindle Diameter, Spindle BT30	Φ 120mm	Φ 120mm	Φ 120mm	Φ 120mm	Φ 120mm
7	主軸外徑、主軸型式BT50 Spindle Diameter, Spindle BT50	Front: 7011P4 × 3 Back:7010P4 × 2	Front: 7011P5 × 3 Back:7010P5 × 2	Front: 7011P5 × 3 Back:6010 × 2	Front:6011 × 3 Back:6010 × 2	customize
8	主軸重復定位精度 Spindle positioning repeatability	0.02mm	0.02mm	0.02mm	0.02mm	customize
9	主軸行程 Spindle travel	150mm	150mm	150mm	150mm	150mm
10	主軸原點光電近接開關1個 Machine Origin with a photoelectric proximity switch	●	●	●	●	●
11	主軸轉速最高RPM/每分鐘 Spindle Maximum Speed [RPM]	4500參照主軸轉 速與伺服電機轉 速對照表	3500參照主軸轉 速與伺服電機轉 速對照表	2500(可指定轉速) 參照一般交流電機轉 速配置對照表	2000(可指定轉速) 參照一般交流電機轉 速配置對照表	(可指定轉速)參照 一般交流電機轉速 配置對照表
12	潤滑油給油管路系統 Lubrication system	●	●	●	●	●
13	軸承給油脂管路、油嘴 Oil pipeline for bearing	●	●	●	●	●
14	8YU齒輪皮帶輪、軸承6011 × 2 8YU timing pulley, pulley bearing 6011ZZ×2	40 teeth	40 teeth	40 teeth	40 teeth	40 teeth
15	三方向可轉向皮帶輪罩 3-direction rotatable belt cover	●	●	●	●	●
16	滾珠絲杆 φ32 × 10節距 Ball screw size φ32mm,pitch:10mm	●	●	●	●	●
17	滾珠絲杆軸承7205前2個后2個 Ball screw bearing: Front:7205×2 Back:7205×2	●	●	●	●	●
18	可配多軸器 Can insert multi-axis head	×	×	●	●	customize
19	手動油壓打刀\拉刀功能 Hydraulic manual tool changing	customer select	customer select	customer select	×	customer select
20	主軸精度 Roundness	0.003mm	0.005mm	0.008mm	0.01mm	customer select

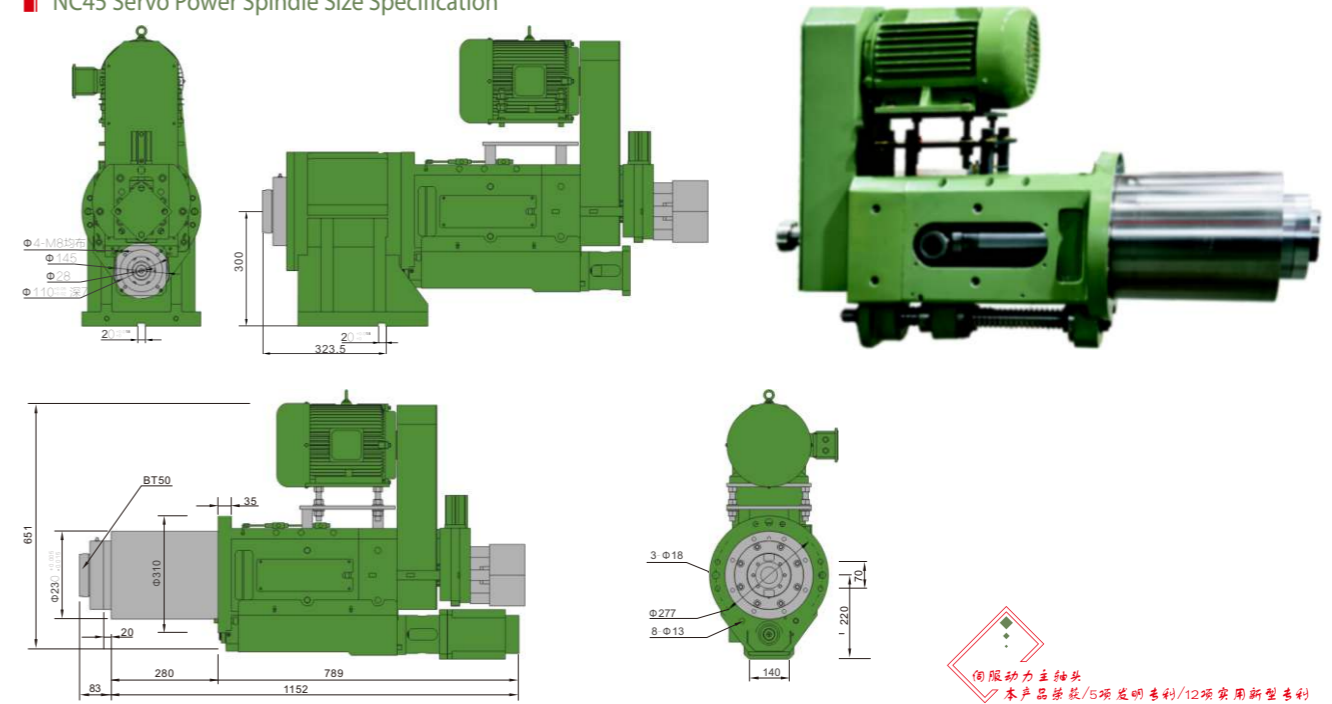
NC35伺服动力主轴外形尺寸图

NC35 Servo Power Spindle Size Specification



NC45伺服动力主轴外形尺寸图

NC45 Servo Power Spindle Size Specification



NC35伺服动力主轴头配置选型表

产品编码: NC35-BT40-001至005 (001-002为钻攻两用型) ●标配 ×不生产

序号 Serial number	配置内容 Configuration content	001标准配置 001 standard configuration	002标准配置 002 standard configuration	003标准配置 003 standard configuration	004标准配置 004 standard configuration	005标准配置 005 standard configuration
1	主轴头颜色 苹果绿 The spindle head in apple green	●	●	●	●	customize
2	主轴电机为伺服电机4.4KW 参照主轴转速与伺服电机转速对照表 Spindle motor with AC servo motor, 4.4KW Motor specifics can see reference table in P...	●	●	×	×	Customer offer
3	2.2-3.0KW主轴电机一般交流电机 Spindle motor with AC induction motor, 2.2KW-3.0KW.	×	×	参照一般交流电机 转速配置对照表	参照一般交流电机 转速配置对照表	Customer offer
4	1.8KW主轴进给驱动伺服电机 Feed motor with AC servo motor, 1.8KW	●	●	●	●	Customer offer
5	主轴进给快速移位速度 Maximum feed speed	24m/min	24m/min	24m/min	24m/min	24m/min
6	主轴外径、主轴型式BT40 Spindle Diameter, Spindle BT40	φ150mm	φ150mm	φ150mm	φ150mm	φ150mm
7	主轴轴承(日本NSK为主) Spindle bearings (Japan NSK)	Front: 7014P4×3 Back:7013P4×2	Front: 7014P5×3 Back:7013P5×2	Front:7014P5×3 Back:6013×2	Front:6014×3 Back:6013×2	Customer select
8	主轴重复定位精度 Spindle positioning repeatability	0.02mm	0.02mm	0.02mm	0.02mm	customize
9	主轴行程 Spindle travel	180mm	180mm	180mm	180mm	180mm
10	主轴原点光电接近开关1个 Machine Origin with a photoelectric proximity switch	●	●	●	●	●
11	主轴转速最高RPM/每分钟 Spindle Maximum Speed (R.P.M.)	4500参照主轴转速 与伺服电机转速 对照表	3500参照主轴转速 与伺服电机转速 对照表	2500(可指定转速) 参照一般交流电机 转速配置对照表	2000(可指定转速) 参照一般交流电机 转速配置对照表	(可指定转速)参照一 般交流电机转速配 置对照表
12	润滑油给油管路系统 Lubrication system	●	●	●	●	●
13	轴承给油脂管路、油嘴 Oil pipeline for bearing	●	●	●	●	●
14	8YU齿形皮带轮、轴承6216×2 8YU timing pulley, pulley bearing 6216ZZ-2	55 teeth	55 teeth	55 teeth	55 teeth	55 teeth
15	三方向可转向皮带轮罩 3-direction rotatable belt cover	●	●	●	●	●
16	滚珠丝杆φ40×10节距 Ball screw size φ40mm,pitch:10mm	●	●	●	●	●
17	滚珠丝杆轴承7206×3前7206×2后 Ball screw bearing: Front:7206×3 Back:7206×2	●	●	●	●	●
18	可配多轴器 Can insert multi-axis head	×	×	●	●	●
19	手动油压打刀、拉刀功能BT40 Hydraulic manual tool changing BT40	customer select	customer select	customer select	×	customer select
20	主轴精度 Roundness	0.003mm	0.005mm	0.008mm	0.01mm	customer select

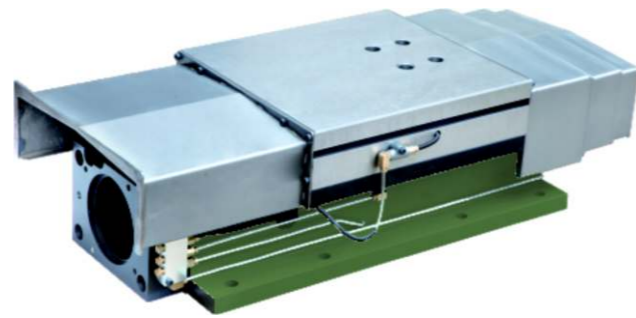
NC45伺服动力主轴头配置选型表

产品编码: NC45-BT50-001至005 (001-002为钻攻两用型) ●标配 ×不生产

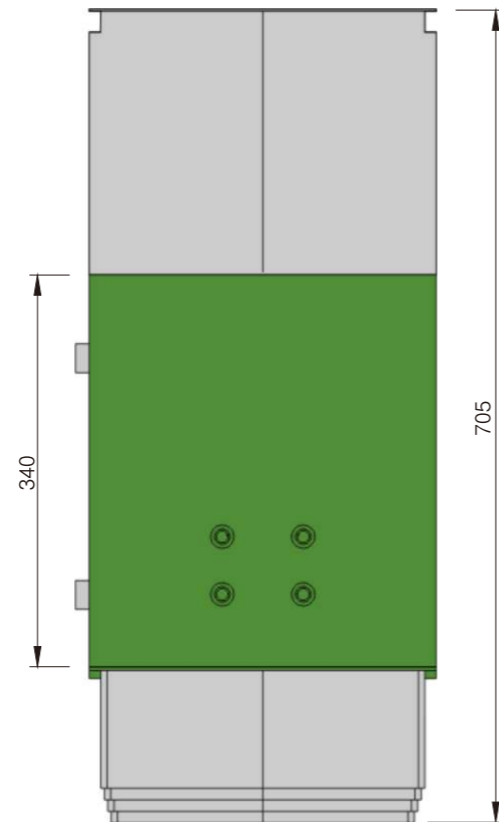
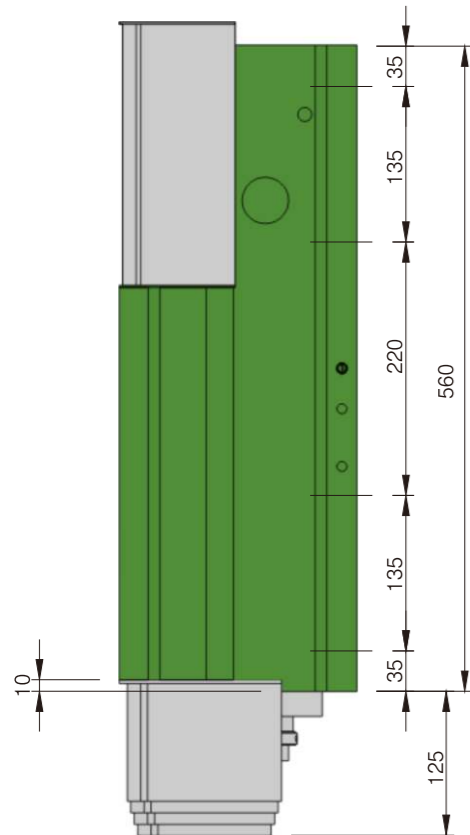
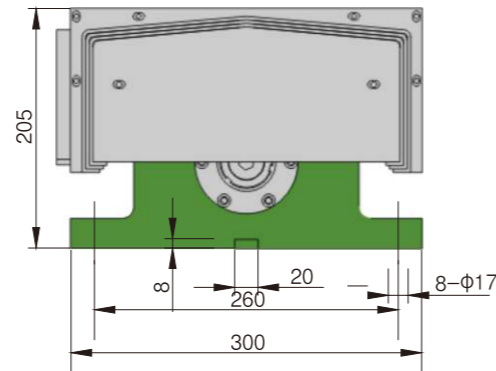
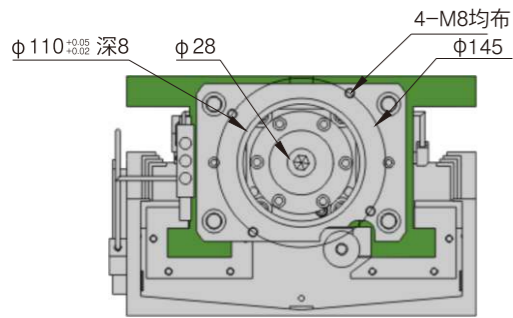
序号 Serial number	配置内容 Configuration content	001标准配置 001 standard configuration	002标准配置 002 standard configuration	003标准配置 003 standard configuration	004标准配置 004 standard configuration	005标准配置 005 standard configuration
1	主轴头颜色 苹果绿 The spindle head in apple green	●	●	●	●	customize
2	主轴电机为伺服电机4.4KW 参照主轴转速与伺服电机转速对照表 Spindle motor with AC servo motor, 4.4KW Motor specifics can see reference table in P...	●	×	×	×	Customer offer
3	主轴电机为伺服电机5.5KW 参照主轴转速与伺服电机转速对照表 Spindle motor with AC servo motor, 5.5KW Motor specifics can see reference table in P...	×	●	×	×	Customer offer
4	3.0-4.0KW主轴电机一般交流电机 Spindle motor with AC induction motor, 3.0KW-4.0KW.	×	×	参照一般交流电机 转速配置对照表	参照一般交流电机 转速配置对照表	Customer offer
5	1.8KW主轴进给驱动伺服电机 Feed motor with AC servo motor, 1.8KW	●	●	●	●	Customer offer
6	主轴进给快速移位速度 Maximum feed speed	24m/min	24m/min	24m/min	24m/min	●
7	主轴外径、主轴型式BT50 Spindle Diameter, Spindle BT50	φ180mm	φ180mm	φ180mm	φ180mm	●
8	主轴轴承(日本NSK为主) Spindle bearings (Japan NSK)	Front: 7216P4×3 Back:7015P4×2	Front:7216P5×3 Back:7015P5×2	Front:7216P5×3 Back:6015×2	Front:6216×3 Back:6015×2	Customer select
9	主轴重复定位精度 Spindle positioning repeatability	0.02mm	0.02mm	0.02mm	0.02mm	customize
10	主轴行程 Spindle travel	180mm	180mm	180mm	180mm	180mm
11	主轴原点光电接近开关1个 Machine Origin with a photoelectric proximity switch	●	●	●	●	●
12	主轴转速最高RPM/每分钟 Spindle Maximum Speed (R.P.M.)	3000参照主轴转速 与伺服电机转速 配置对照表	2500参照主轴转速 与伺服电机转速 配置对照表	2000(可指定转速)一 般交流电机转速配 置对照表	1500(可指定转速)一 般交流电机转速配 置对照表	客户(可指定转速)一 般交流电机转速配 置对照表
13	润滑油给油管路系统 Lubrication system	●	●	●	●	●
14	轴承给油脂管路、油嘴 Oil pipeline for bearing	●	●	●	●	●
15	8YU齿形皮带轮、轴承6216×2 8YU timing pulley, pulley bearing 6216ZZ-2	55 teeth	55 teeth	55 teeth	55 teeth	55 teeth
16	三方向可转向皮带轮罩 3-direction rotatable belt cover	●	●	●	●	●
17	滚珠丝杆φ40×10节距 Ball screw size φ40mm,pitch:10mm	●	●	●	●	●
18	滚珠丝杆轴承7206×3前7206×2后 Ball screw bearing: Front:7206×3 Back:7206×2	●	●	●	●	●
19	可配多轴器 Can insert multi-axis head	×	×	●	●	●
20	手动油压打刀功能BT50 Hydraulic manual tool changing (BT50)	customer select	customer select	customer select	×	customer select
21	主轴精度 Roundness	0.003mm	0.005mm	0.008mm	0.01mm	customer select

(伺服/油压)硬轨滑台

The (Servo/Hydraulic) Slide With Hardened Way

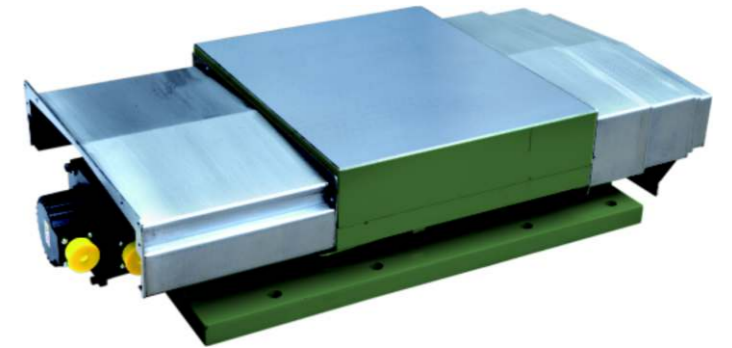


驅動方式 Drive type	型號 model number	行程 travel	軌道 Rail type
伺服 Servo	NCBH300-L200	200	硬軌 hardened way

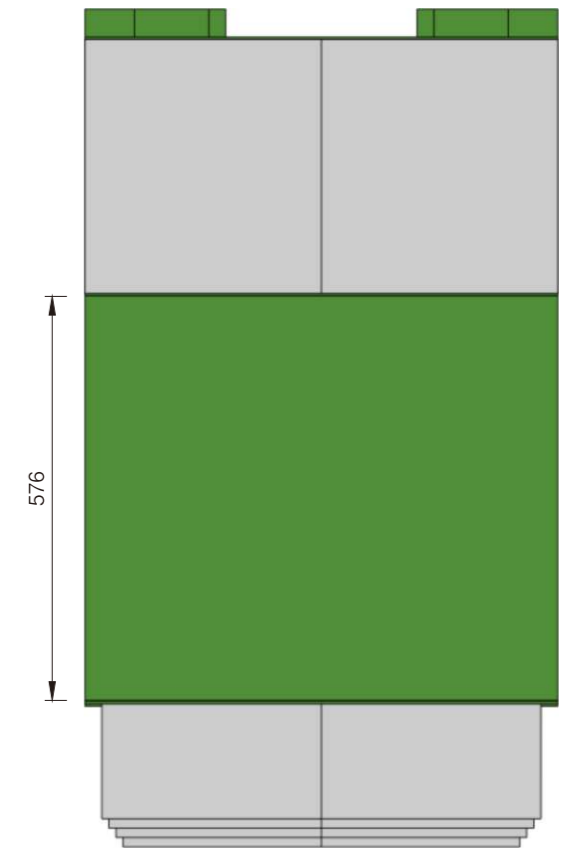
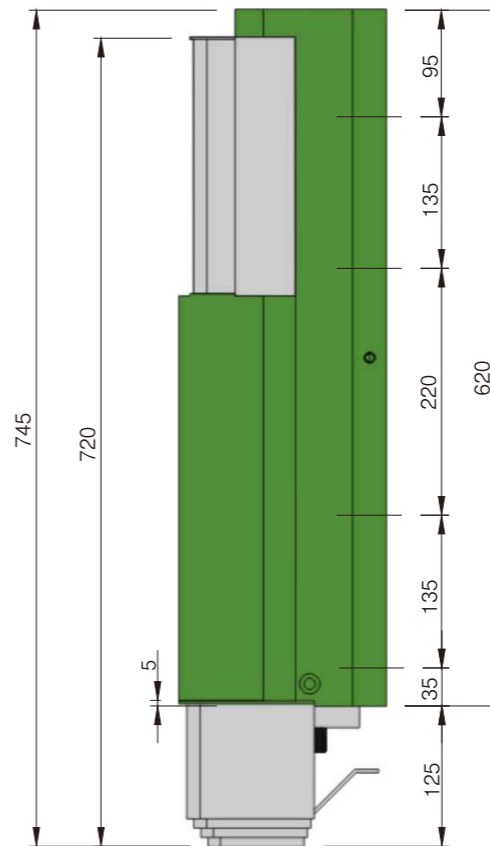
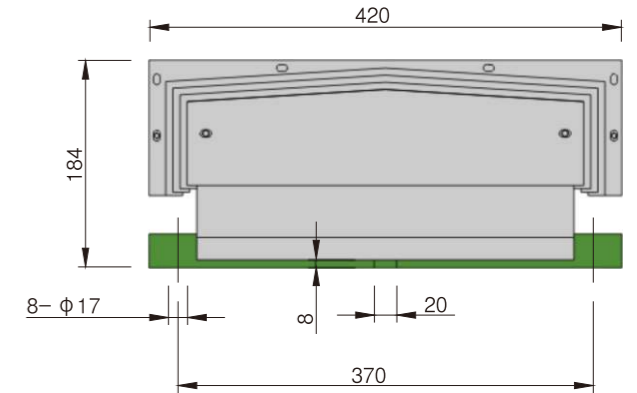
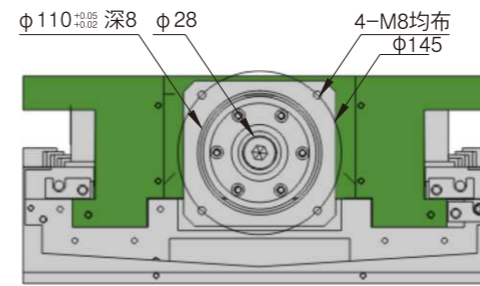


伺服硬轨滑台

The Servo Slide With Hardened Way

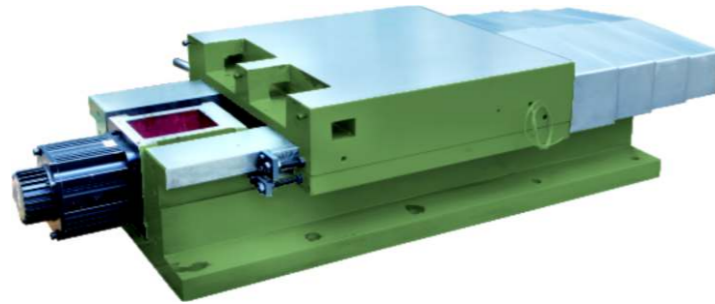


驅動方式 Drive type	型號 model number	行程 travel
伺服 Servo	NCBH420-L180	180

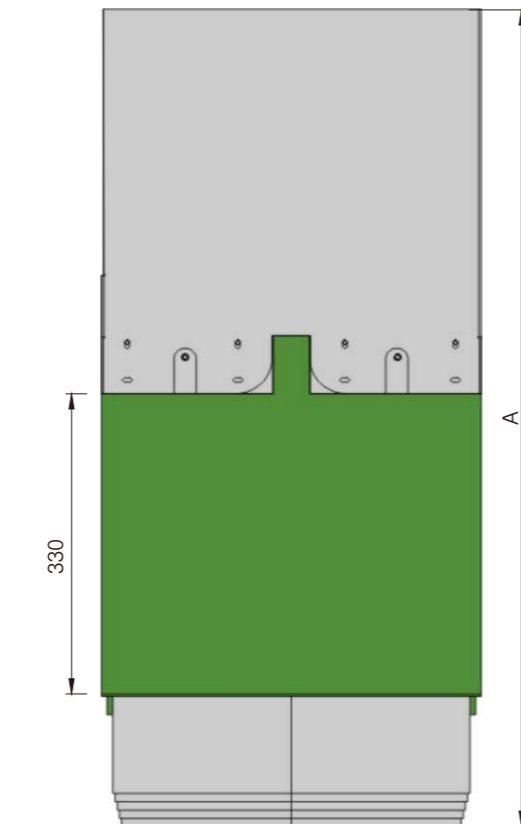
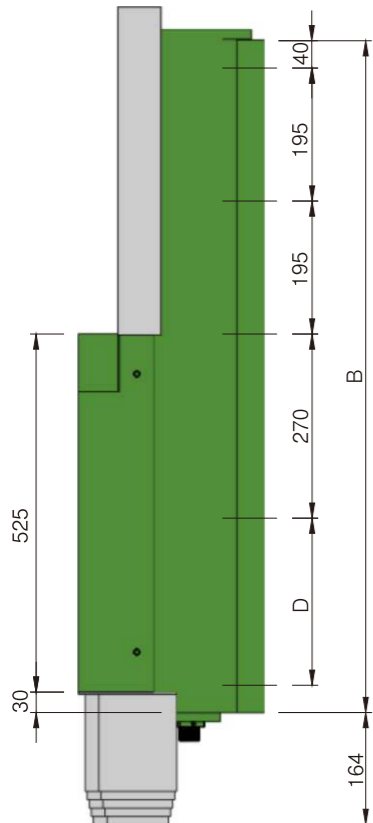
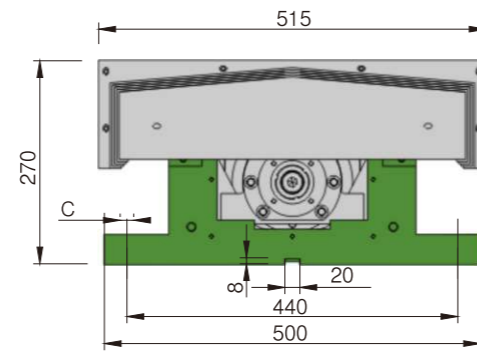
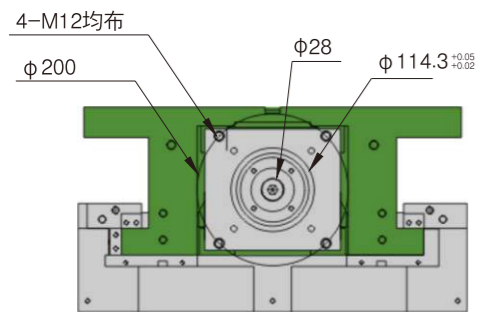


伺服硬轨滑台

The Servo Slide With Hardened Way (With Turcite)

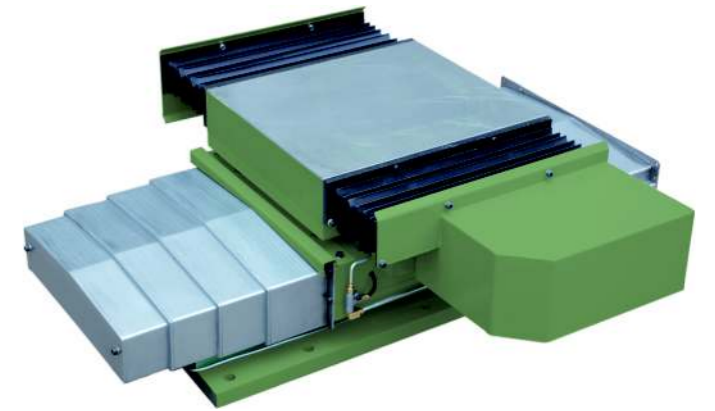


驅動方式 Drive type	型號 model number	A	B	C	D	E	行程 travel
伺服 Servo	NCBH500-L200	957	783	8-φ18	-	1128	200
伺服 Servo	NCBH500-L400	1197	985	10-φ18	245	1397	400

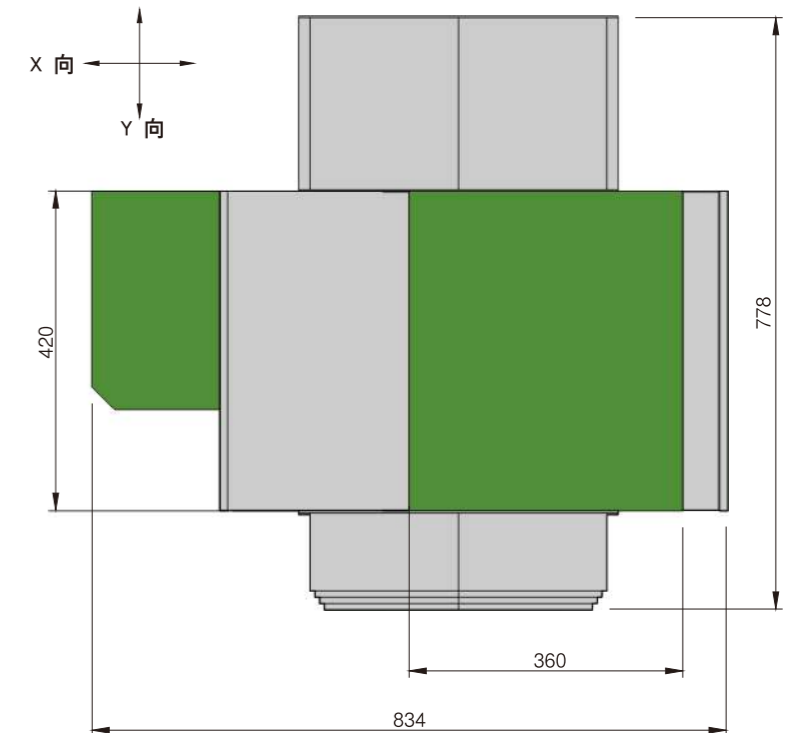
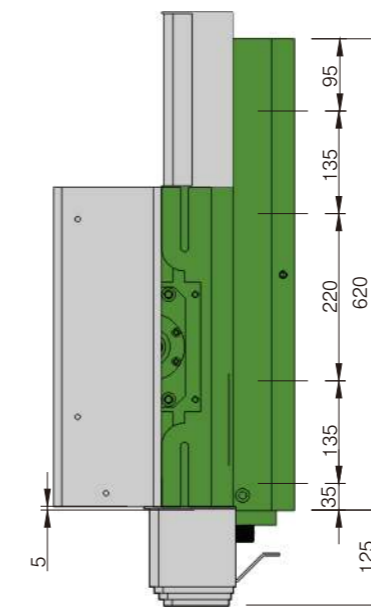
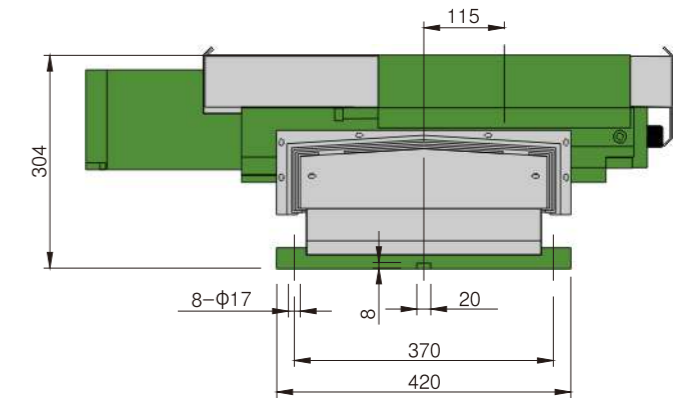
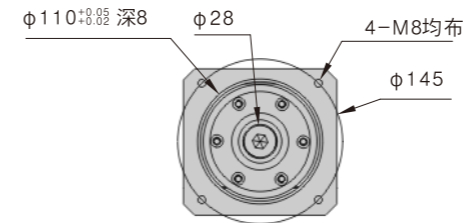


伺服硬轨十字滑台

The Servo Cross Slide With Hardened Way

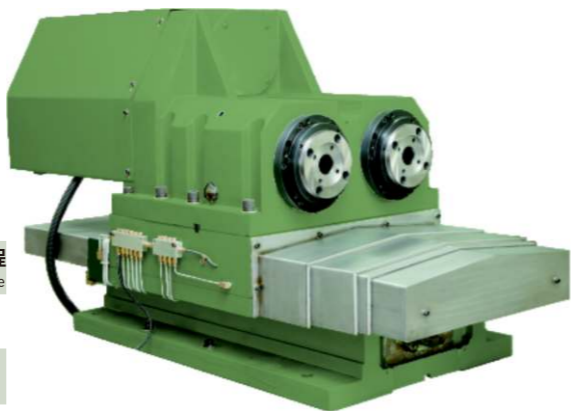


驅動方式 Drive type	型號 model number	X行程 X travel	Y行程 Y travel
伺服 Servo	NCBH420-XL180-YL180	180	180
伺服 Servo	NCBH420-XL120-YL180	120	180

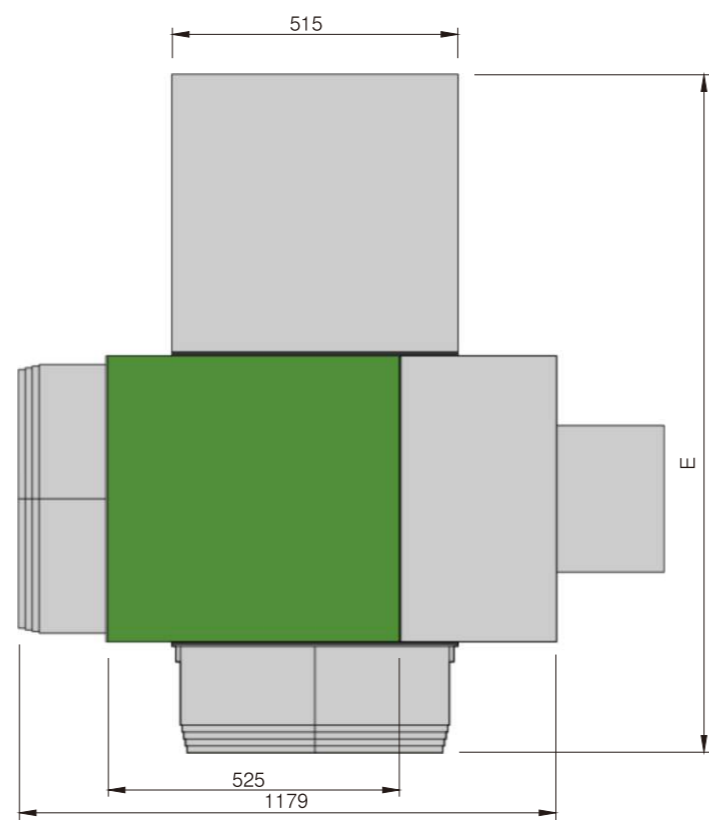
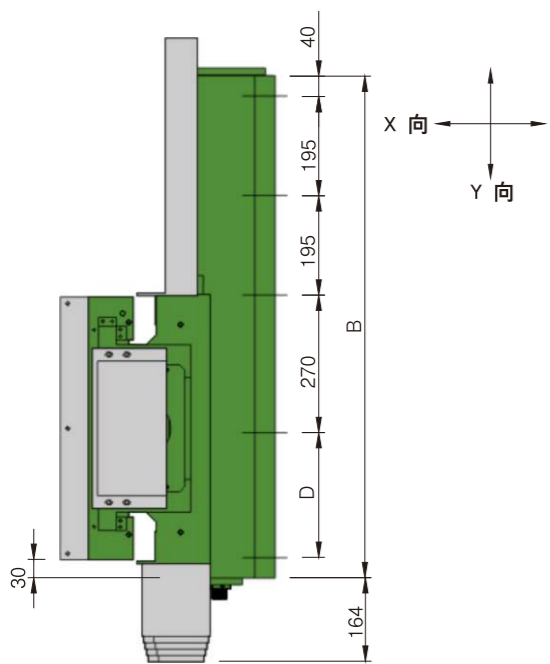
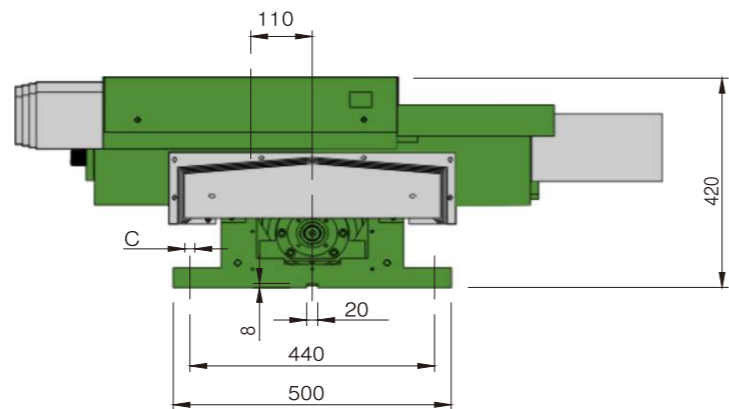
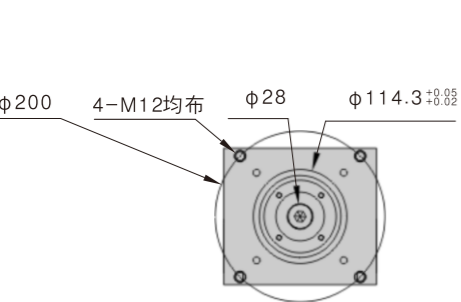


伺服硬轨十字滑台

The Servo Cross Slide With Hardened Way



驅動方式 Drive type	型號 model number	A	B	C	D	E	X 行程 X travel	Y 行程 Y travel
伺服 Servo	NCBH500-XL200-YL200	1128	783	8-φ18	-	956	200	200
伺服 Servo	NCBH500-XL200-YL400	1397	985	10-φ18	245	1197	200	400

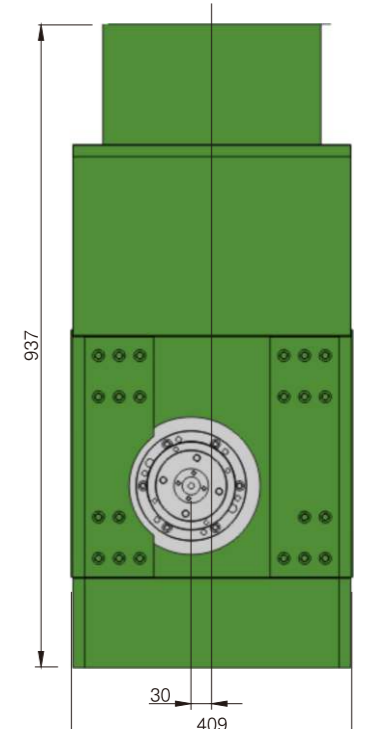
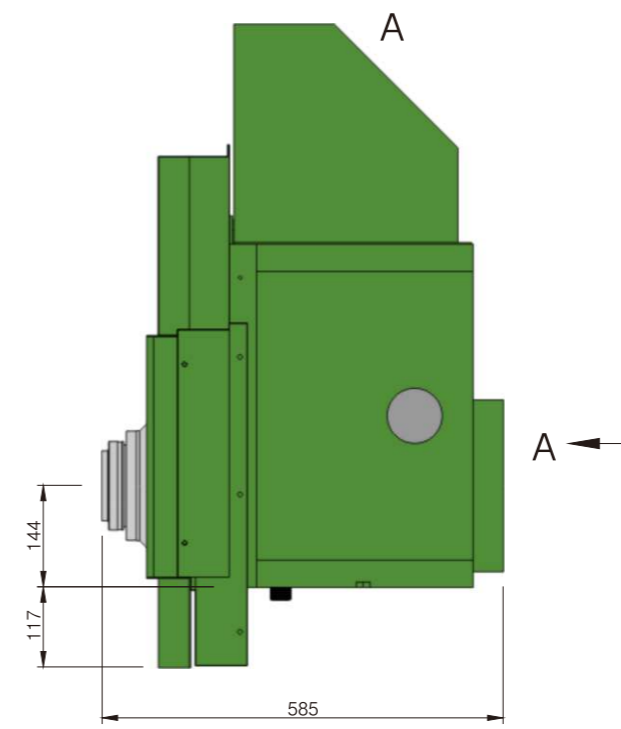
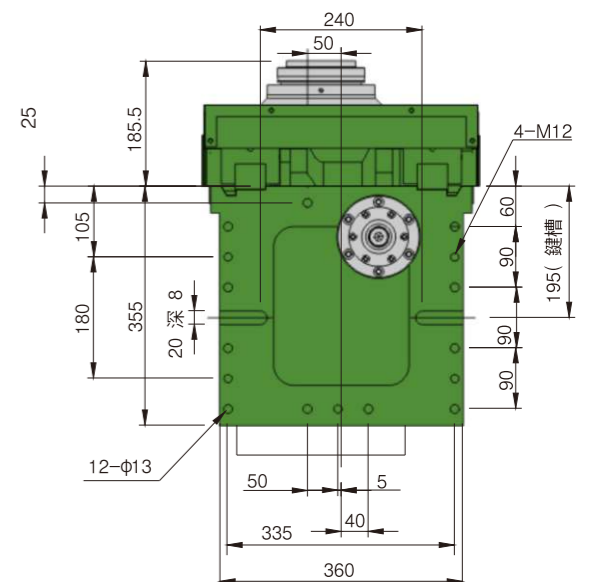
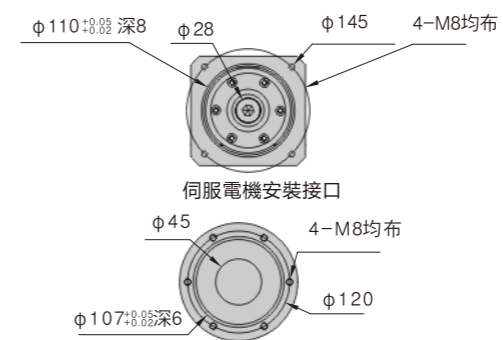


立式伺服线轨卧式镗铣主轴头滑台

Vertical Servo Linear Slide With Horizontal Boring Spindle Head



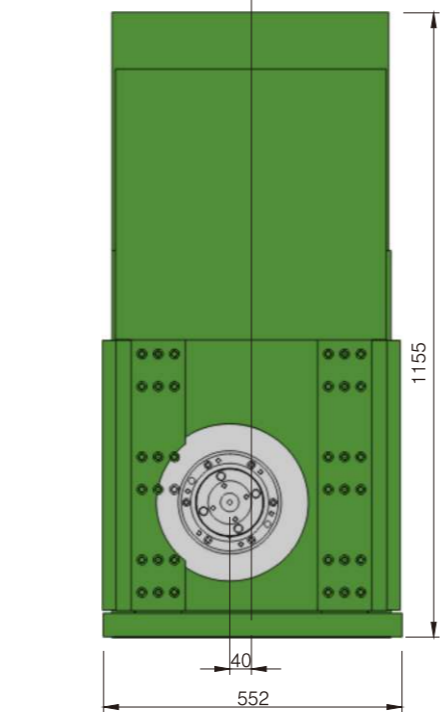
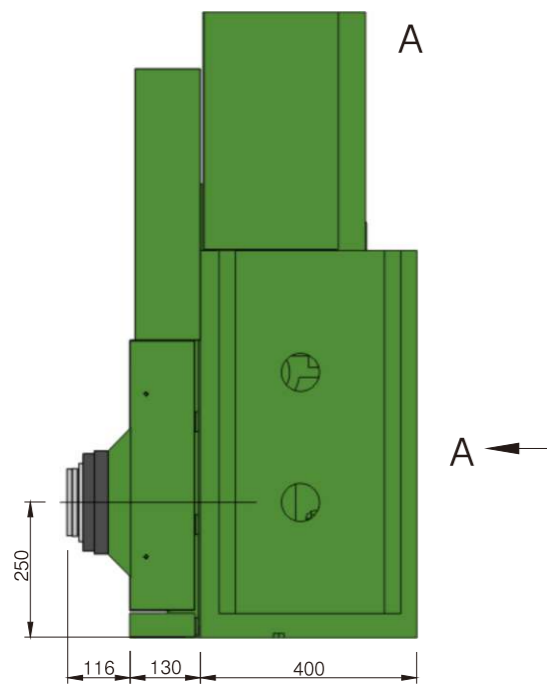
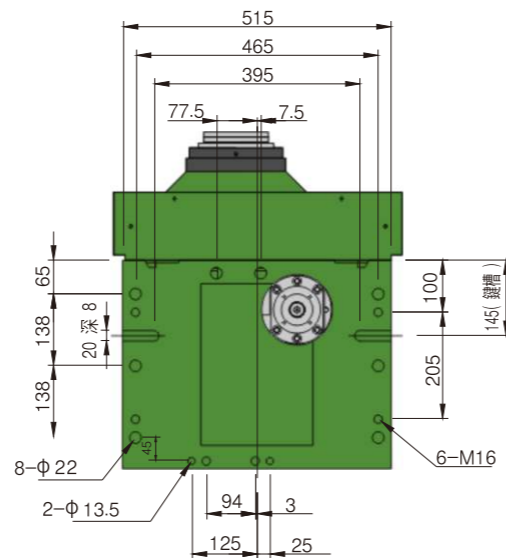
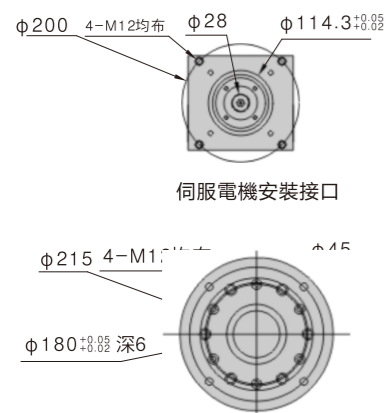
驅動方式 Drive type	型號 model number	行程 travel	主軸最高轉速 Spindle Maximum Speed
伺服 Servo	NCBH420-SR60-L140	140	3000
伺服 Servo	NCBH420-BT40-L140	140	6000



立式伺服线轨卧式镗铣主轴头滑台

Vertical Servo Linear Slide With Horizontal Boring Spindle Head

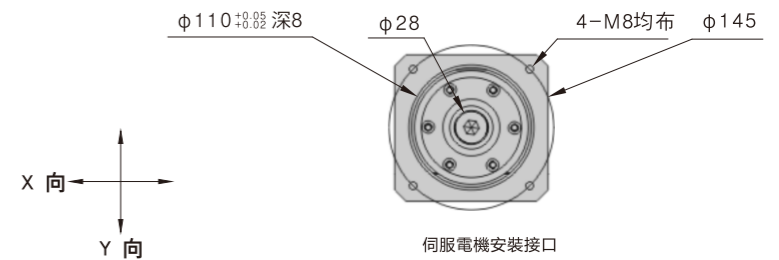
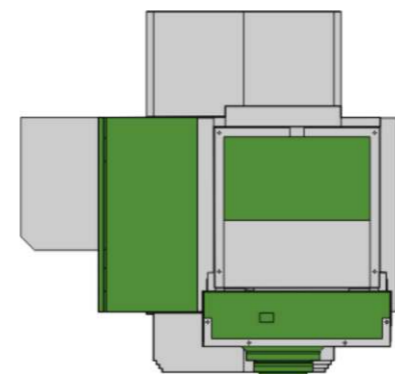
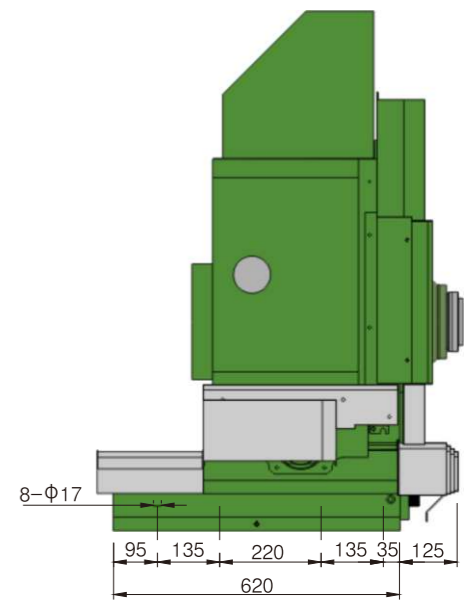
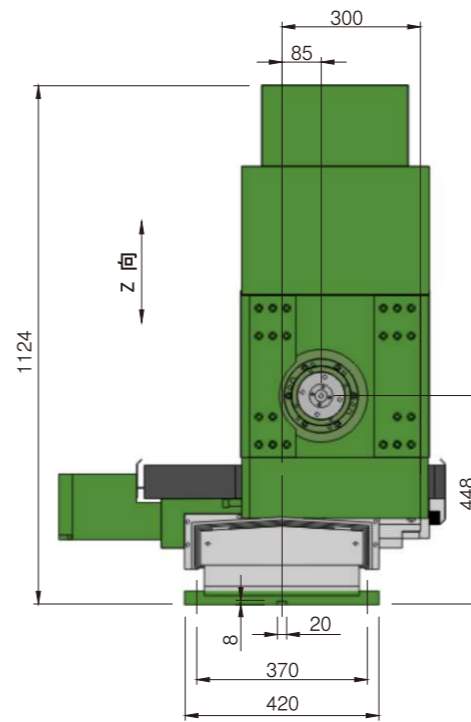
驅動方式 Drive type	型號 model number	行程 travel	主軸最高轉速 Spindle Maximum Speed
伺服 Servo	NCBH500-SR80-L200	200	1500



卧式三轴伺服镗铣主轴头滑台

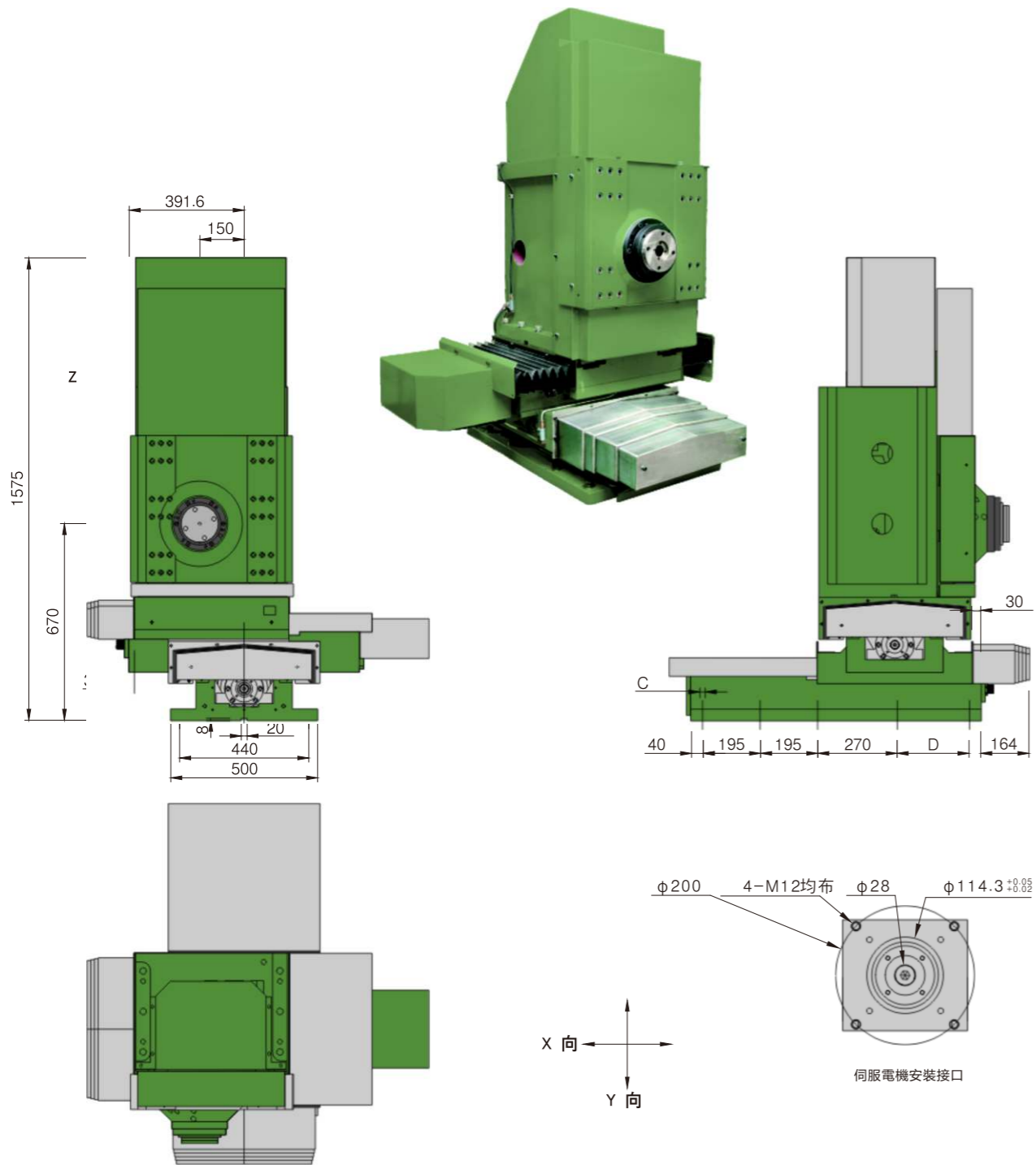
3-Axis Simultaneous Motion Servo Slide With Horizontal Boring Spindle Head

驅動方式 Drive type	型號 model number	X行程 X travel	Y行程 Y travel	Z行程 Z travel	主軸最高轉速 Spindle Maximum Speed
伺服 Servo	NCBH420-SR60-XL180-YL180	180	180	140	3000
伺服 Servo	NCBH420-BT40-XL180-YL180	180	180	140	6000
伺服 Servo	NCBH420-SR60-XL120-YL180	120	180	140	3000
伺服 Servo	NCBH420-BT40-XL120-YL180	120	180	140	6000



卧式三轴伺服镗铣主轴头滑台

3-Axis Simultaneous Motion Servo Slide With Horizontal Boring Spindle Head

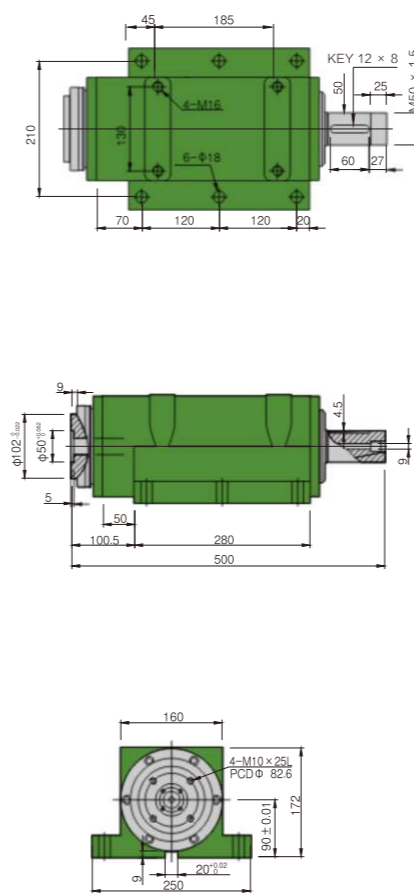


驅動方式 Drive type	型號 model number	B	C	D	X行程 X travel	Y行程 Y travel	Z行程 Z travel	主軸最高轉速 Spindle Maximum Speed
伺服 Servo	NCBH500-SR80-XL200-YL200	783	8-φ18	-	200	200	200	1500
伺服 Servo	NCBH500-SR80-XL200-YL400	985	10-φ18	245	200	400	200	1500

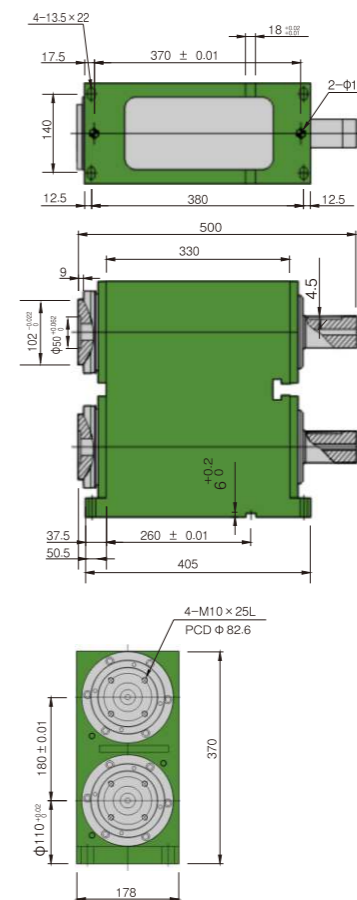
SR60精密主轴头

SR60 Precision Spindle Head

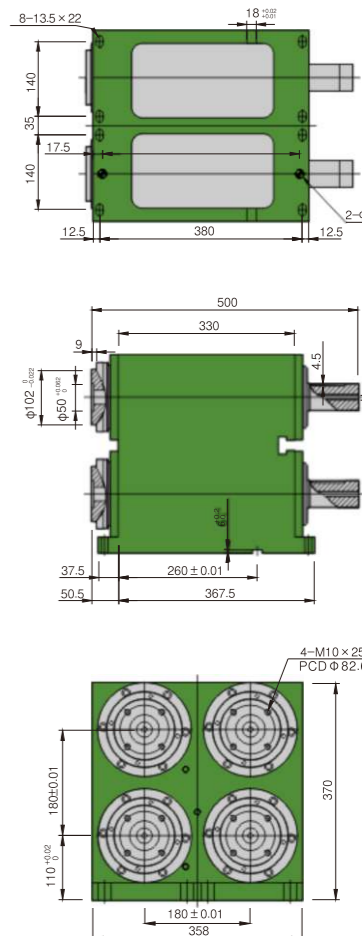
SR60精密主轴头
SR60 Precision Spindle Head



SR60-2T2S 双层两轴精密主轴头
SR60-2T2S Double-decker Two Axis Precision Spindle Head



SR60-2T4S 双层四轴精密主轴头
SR60-2T4S Double-decker Four Axis Precision Spindle Head



精度保證 Precision	潤滑方式 The types of lubrication Grease	最大馬力 Maximum Power	固定螺栓 Fixing screws	
主軸端面之偏轉 0.005mm End run out ≦ 0.005mm	黃油潤滑	3.7KW	4-M16 × 60L	
型式 Type	使用軸承 Bearing	最大回轉數 Maximum speed	重量 Weight	上升溫度 temperature rise
SR60-BT40	(NSK) 7212×2/7211×2	3000R.P.M.	70KG	20°
SR60-FB60	(NSK) 7212×2/7211×2	3000R.P.M.	70KG	20°
SR60-FB60-2T2S	(NSK) 7212×2/7211×2	3000R.P.M.	70KG	20°
SR60-FB60-2T4S	(NSK) 7212×2/7211×2	3000R.P.M.	70KG	20°

主轴头系列

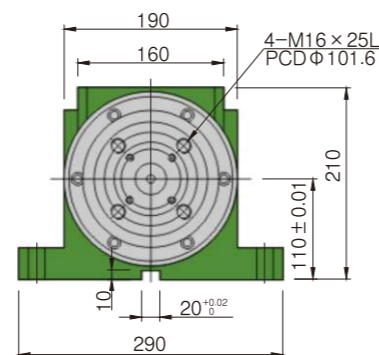
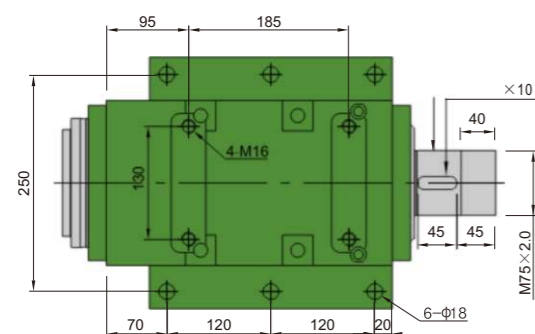
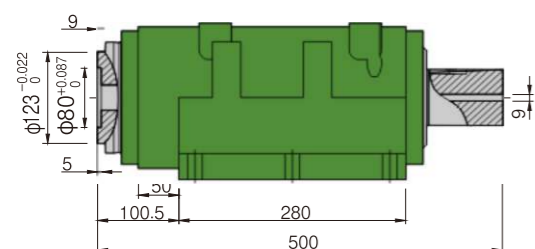
Spindle Head series



SR80精密主轴头

SR80 Precision Spindle Head

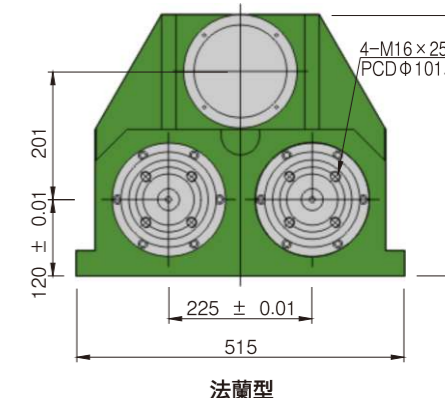
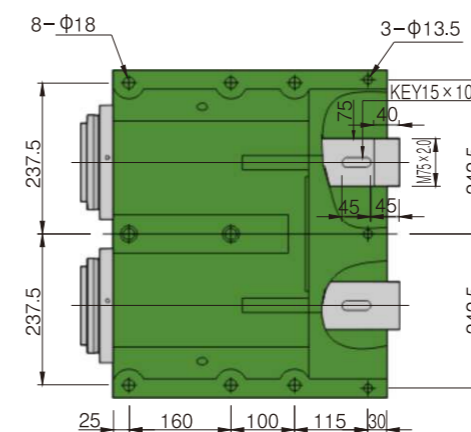
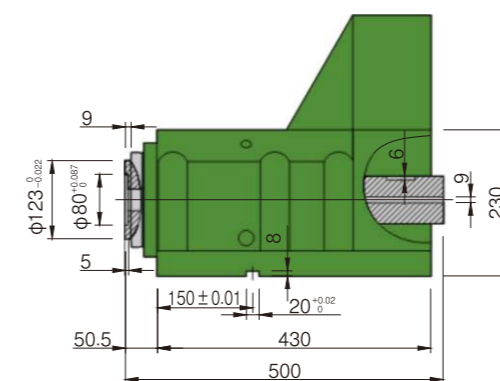
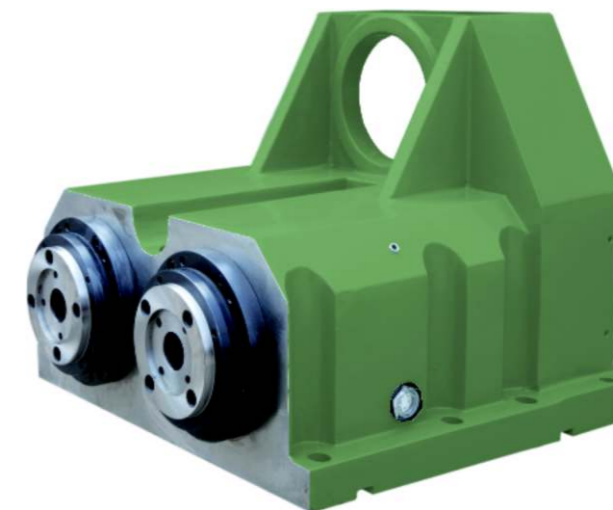
精密主轴头	
型號	SR80



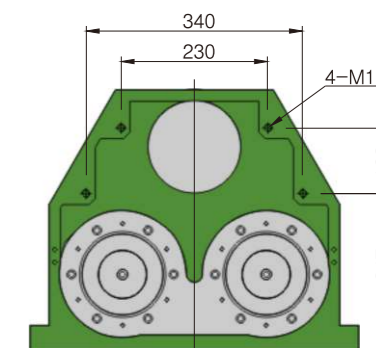
SR80精密主轴头

SR80 Precision Spindle Head

SR80 雙軸粗鏜主軸頭		SNC80 雙軸精鏜主軸頭	
型號	SR80-2S	型號	SNC80-2S



法蘭型



精度保證 Precision	潤滑方式 The types of lubrication Grease	最大馬力 Maximum Power	固定螺栓 Fixing screws
主軸端面之偏轉 0.005mm	黃油潤滑	3.7KW	4-M16×60L

型式 Type	使用軸承 Bearing	最大回轉數 Maximum speed	重量 Weight	上升溫度 temperature rise
SR80-BT40/BT50	(NSK)32216×2/6216×2	1800rpm	95kg	20°
SR80-FB80	(NSK)32216×2/6216×2	1800rpm	95kg	20°
SR80-BT40/BT50	(NSK)7216×2/7216×2	3000rpm	95kg	20°
SR80-FB80	(NSK)6216×2/6216×2	3000rpm	95kg	20°

型式 Type	使用軸承 Bearing	最大回轉數 Maximum speed	重量 Weight	上升溫度 temperature rise
SR80-2S-BT40	(NSK)32216×2/6216×2	1200rpm	290kg	20°
SR80-2S-FB80	(NSK)32216×2/6216×2	1200rpm	290kg	20°
SR80-2S-BT40	(NSK)7216×2/7216×2	3000rpm	290kg	20°
SR80-2S-FB80	(NSK)7216×2/7216×2	3000rpm	290kg	20°
SNC80-2S	(NSK)7016×5	6000rpm	360kg	20°