

# 耐玖機電設備

Wuxi Resistant Electrical and Mechanical Equipment Co.Ltd



## 營銷中心：無錫耐玖機電設備有限公司

Marketing Center: Wuxi Resistant Electrical and Mechanical Equipment Co.Ltd

地址：無錫市錫山區錫滬東路108號 Add:No.108.Xihu East Road, Xishan District, Wuxi

400熱線：400 0000 190 電話：0510-88700131 傳真：0510-68922002

## 臺灣：鑫長虹實業有限公司

TAIWAN SKYBRIDGE INDUSTRIAL CO.,LTD.

地址：臺中縣霧峰鄉四德村北豐路68號 Add: No.68, Beifeng Road, Shih Te Village, Wu Feng Hsiang, Taichung Hsien



▶ 本公司享有規格變更之權利，恕不另行通知 (The specifications are subject to change by our company without prior notice.)

熱線：400 0000 190

## 公司簡介 | Company Profile

杭州長虹機械制造有限公司（臺灣鑫長虹實業有限公司），是專業從事“機床及機床附件類產品”的設計、生產、銷售的企業。公司主要產品：“EVERTOP非標（鑽、攻、銑、鏜）組合專用機床系列；多軸器系列（也稱：多軸鑽孔器、多軸頭、多軸鑽、群鑽、多孔鑽）；EVERTOP龍門式多軸鑽孔機床、油壓鑽孔機床、伺服鑽孔攻牙機床、導螺桿攻牙機床系列；各類動力頭、精密主軸頭系列；油壓、伺服滑臺系列；傳統型萬向節系列”等六大系列產品。本公司產品具有設計美、品質優、自動化程度高的特點，可為用戶節省勞動用工、降低勞動強度，簡化生產工序、穩定加工產品質量、大幅提升生產效率。

1996年應中國大陸市場需求，公司開始對中國大陸進行投資，投入了先進的CNC加工設備及檢測設備，成立了杭州長虹機械制造有限公司；之後，又創辦了杭州貝克機械有限公司。因股份制改造需要，2018年起繼續延用杭州長虹機械製造機械有限公司，並不斷開發新產品，以適應不斷發展的市場需要。

公司秉承“以精品、精密、精美”為導向，堅持高起點、高標準、採用全新的生產設備、並吸收消化國外先進的生產技術，不斷進行技術創新；“以質量為引航、以名牌為追求、以客戶為中心”為企業理念，堅持“品質至上、技術領先、精美耐用、用戶滿意”的質量方針，公司在早期就已通過英國URS認證的ISO9001:2000質量體系標準認證。在生產過程中，建立了系統的質量管控體系，注重每個工作細節、確保了產品質量的穩定和提高。

本公司產品銷往世界各地，如美國、日本、泰國、法國、西班牙、韓國等國家和地區，內銷全國各地，已形成一個完善的營銷網絡。生產一流的產品是長虹永恒的主題，一切為用戶着想、讓用戶滿意，是長虹機械最忠誠的承諾！

Hangzhou Evertop Machine Co., Ltd (Taiwan Skybridge Industrial Co., Ltd ) is professional enterprise for designing, manufacturing, and selling "machine tools and machine tool accessories". Main products in our company includes six series, such as: "EVERTOP non-standard (drilling, tapping, milling, boring) combined special machine tool series; multi-spindle series(also called for multi-spindle drill, multi-spindle head, multi-drilling, multi-facet drill, multi-hole drill); EVERTOP gantry multi-spindle drilling machine tools, oil pressure drilling machine tools, servo drill and tapping machine tool, lead screw tapping machine tools series; various power heads, precision spindle head series; oil pressure, servo sliding series; traditional universal joint series" and other series. The products in our company have the characteristics of "great design, high quality, high degree of automation", which can save the labor, reduce labor intensity, simplify production procedure, stabilize the processing product quality, and improve the production efficiency significantly for users.

In 1996, for responding to the mainland demand, the company begins to invest to China mainland, and introduced the advanced CNC processing equipment and inspection equipment, and established Hangzhou Evertop Machine Co., Ltd; and after, founded Hangzhou Baker Machinery Co., Ltd. Due to the need of shareholding system reform, Since 2018, Hangzhou Evertop Machine Co., Ltd. will continue to be used, and it will continue to develop new products to meet the growing market demand.

The company adheres to the guild line of "competitive products, high precision, exquisiteness", insist on high starting point, high standard, and adopts full new manufacturing equipment, absorb and digest foreign advanced production technologies, and continue to carry out technology innovation; the company concept are: "taking the quality as the navigation, famous brand as the pursuit, customer as the center", and insist on the quality policy "supreme quality, advanced technology, exquisiteness and endurance, users satisfaction", and in the early stage, the company has already passed the ISO 9001: 2000 quality system standard certification of URS certification in Britain. We had build systematic quality control system, focusing on every detail of work to ensure the stable product quality and improvement.

The products in our company are sold to all over the world, such as America, Japan, Thailand, France, Spain, Korea and other countries and region, domestic sales throughout the country, and had formed a perfect marketing network. It is the eternal theme of Evertop to manufacture first-class products, everything concerned for customer and make customer satisfied, which is most faithful promise of Evertop Machine!



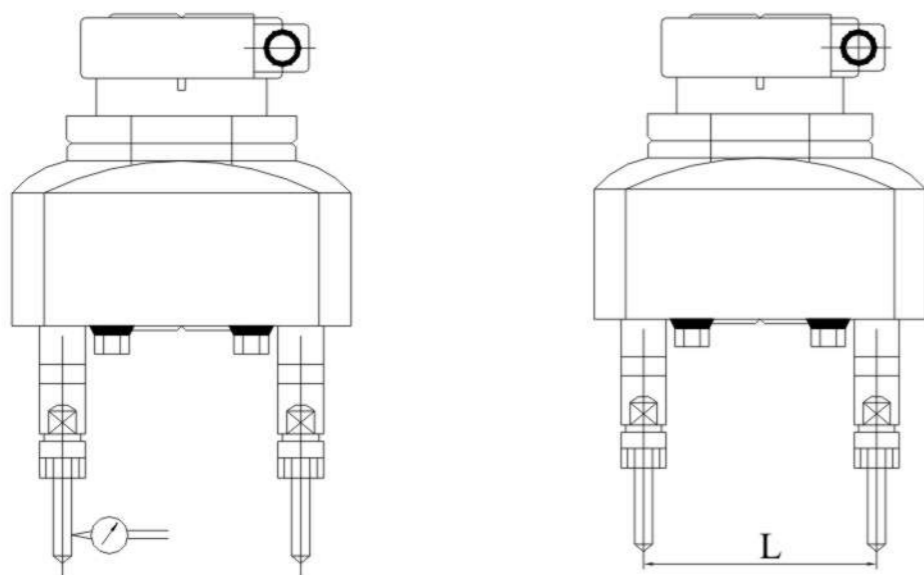
## 目錄 | Contents

|  |  |
|--|--|
| 企業面貌 / The Picture of Ever top.....01  | ● 桌式伺服鑽孔機.....27<br>Desk s Servo Drilling Machine  |
| 多軸器系列 / Multi-Spindle Drilling & Tapping Head Series...03                        | ● 單機頭龍門鑽孔機.....28<br>Single Head Gantry Drilling Machine   |
| ● 多軸器主要精度要求.....03<br>Main specifications of multi-spindle Unit                  | ● 龍門式一立三臥攻牙專用機.....28<br>Gantry type one-vertical three-horizontal tapping special machine           |
| ● 噪聲(由分貝儀測定).....03<br>Noise (measured by decibel meter)                         | ● 三機頭臥式鑽孔專用機.....29<br>Three-head horizontal drilling special machine                                |
| ● 輸出軸徑向跳動.....04<br>Radial run-out of output shaft                               | ● 三機頭臥式攻牙專用機.....29<br>Three-head horizontal tapping special machine                                 |
| ● 兩孔間距離L.....04<br>Hole to hole distance L                                       | ● 八工位轉盤銑鑽機床.....30<br>Eight-station rotary table milling machine tool                                |
| ● 標準附件清單.....04<br>Standard accessory list                                       |  |
| ● (中切削)兩軸可調式T型.....05<br>(Medium cutting) Type T with two adjustable spindles    |  |
| ● (中切削)可調式A型.....05<br>(Medium cutting) Type A adjustable type                   |  |
| ● (中切削)U型圓型多軸器.....06<br>(Medium cutting) Type U round shaft multi-spindle tool  |  |
| ● (中切削)U型方型多軸器.....07<br>(Medium cutting) Type U square shaft multi-spindle tool |  |
| ● (重切削)U型系列多軸器.....09<br>(Heavy cutting) Type U multi-spindle tool               |  |
| ● 固定式系列多軸器.....10<br>Fixed multi-spindle tool                                    |  |
| ● 固定型加導孔板(標準樣式).....12<br>Fixed type with board of guiding hole (standard type)  |  |
| ● 多軸器加工結構圖.....12<br>Multi-spindle tool structure chart                          |  |
| ● 多軸器(固定式系列).....13<br>Multi-Spindle head(Fixed series)                          |  |
| ● 配件.....14<br>(Accessory)   |  |
| ● 配合機種主軸端尺寸.....15<br>Dimension of spindle nose                                  |  |
| ● 多軸器參數.....16<br>Specs of the multi-spindle tool                                |  |
| 加工零件實例 / Example of machining part.....20  |  |
| 機床系列 / Machine tools series.....22   |  |
| ● 桌式導螺桿自動進刀攻牙機.....22<br>Desk Lead Crew Automatic Feed Tapping Machine           |  |
| ● 桌式油壓自動進刀鑽孔機床.....22<br>Desk Lead Crew Automatic Feed Tapping Machine           |  |
| ● 立式油壓自動進刀鑽孔機床.....23<br>Vertical Hydraulic Automatic Feed Drilling Machine      |  |
| ● 立式導螺桿自動進刀攻牙機.....24<br>Vertical Lead Crew Automatic Feed Tapping Machine       |  |
| ● 桌式導螺桿自動進刀攻牙機.....24<br>Desk Lead Crew Automatic Feed Tapping Machine           |  |
| ● 桌式油壓自動進刀鑽孔機.....25<br>Desk Hydraulic Automatic Feed Drilling Machine           |  |
| ● 桌式導螺桿自動進刀攻牙機.....25<br>Desk Lead Crew Automatic Feed Tapping Machine           |  |
| ● 桌式雙聯型鑽攻機床.....26<br>Desk Double Bits Drilling Machine                          |  |
|  | ● 動力頭系列 / Power Head series.....31   |
|  | ● BHD5/6/8油壓動力頭.....31<br>BHD5/6/8 Hydraulic Power Head  |
|  | ● N6攻牙動力頭.....34<br>N6 Tapping Head  |
|  | ● BHN6/8攻牙動力頭.....35<br>BHN6/8 Tapping Head  |
|  | ● N7攻牙動力頭.....37<br>N7 Tapping Head  |
|  | ● NC-BHD6/8伺服動力頭.....38<br>NC-BHD6/8 Servo Power Head  |
|  | ● NC16伺服動力主軸外形尺寸圖.....40<br>NC16 Servo Power Spindle Size Specification                              |
|  | ● 滑臺系列 / Slipway series.....41   |
|  | ● NC25/35伺服動力主軸外形尺寸圖.....41<br>NC25/35 Servo Power Spindle Size Specification                        |
|  | ● (伺服/油壓)硬軌滑臺.....43<br>The (Servo/Hydraulic) Slide With Hardened Way                                |
|  | ● 伺服硬軌滑臺.....44<br>The Servo Slide With Hardened Way   |
|  | ● 伺服硬軌十字滑臺.....46<br>The Servo Cross Slide With Hardened Way   |
|  | ● 立式伺服線軌臥式鏜銑主軸頭滑臺.....48<br>Vertical Servo Linear Slide With Horizontal Boring Spindle Head          |
|  | ● 臥式三軸伺服鏜銑主軸頭滑臺.....50<br>3-Axis Simultaneous Motion Servo Slide With Horizontal Boring Spindle Head |
|  | ● 主軸頭系列 / Spindle Head series.....51   |
|  | ● Sr60 精密主軸頭.....51<br>SR60 Precision Spindle Head   |
|  | ● SR80 精密主軸頭.....52<br>SR80 Precision Spindle Head   |



### 多軸器主要精度要求

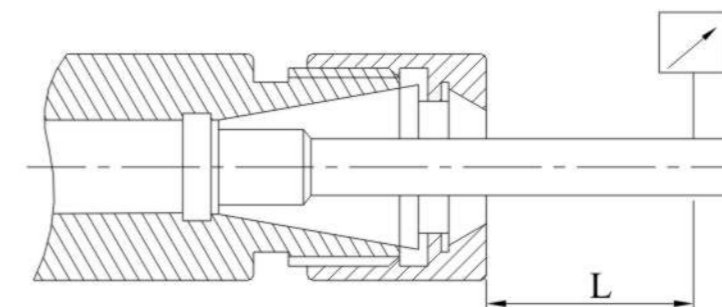
Main specifications of multi-spindle Unit



### 噪聲(由分貝儀測定)

Noise (measured by decibel meter)

| 型號 Type  | 轉速(rpm)<br>Rotation rate(rpm) | 測點距離(cm)<br>Point distance (cm) | 最大噪聲值(dB)<br>Max. Noise level (dB) |
|--|-------------------------------|---------------------------------|------------------------------------|
| A型 Type A  | 2000                          | 30                              | 88                                 |
| T型 Type T  | 2000                          | 30                              | 83                                 |
| U型(8軸以內)最大軸距<200mm<br>Max. shaft distance of Type U (equal or less than 8 shafts): < 200mm | 2000                          | 30                              | 85                                 |
| U型(8軸以內)最大軸距≥200mm<br>Max. shaft distance of Type U (equal or less than 8 shafts): ≥ 200mm | 2000                          | 30                              | 90                                 |
| U型(8軸以上)最大軸距<200mm<br>Max. shaft distance of Type U (more than eight spindles): < 200mm    | 2000                          | 30                              | 88                                 |
| U型(8軸以上)最大軸距≥200mm<br>Max. shaft distance of Type U (more than eight spindles): ≥ 200mm    | 2000                          | 30                              | 93                                 |



徑跳值由標準帶ER錐度芯棒測得 Radial runout value (measured by standard ER taper rod)

### 輸出軸徑向跳動

Radial run-out of output shaft

| 型號 Type | 距離L(mm)<br>Distance(mm) | 徑向跳動<br>Radial runout |
|---------|-------------------------|-----------------------|
| ER8     | 40                      | 0.05                  |
| ER11    | 40                      | 0.05                  |
| ER16    | 40                      | 0.05                  |
| ER20    | 40                      | 0.05                  |
| C5      | 40                      | 0.10                  |
| C6      | 40                      | 0.10                  |
| C9      | 40                      | 0.10                  |
| C12     | 40                      | 0.10                  |



### 兩孔間距離L

Hole to hole distance L

| 類別 Category                            | 距離L(mm)<br>Distance(mm) |
|--|-------------------------|
| 加導孔板<br>With board of guiding hole     | ± 0.05                  |
| 不加導孔板<br>Without board of guiding hole | ± 0.1                   |

### 標準附件清單

Standard accessory list

- |                  |                             |
|------------------|-----------------------------|
| 1. V型支架1套        | 1. V-Bracket 1              |
| 2. M14六角螺母1個     | 2. M 14 hexagonal nut 1     |
| 3. 彈簧2支          | 3. Spring 2                 |
| 4. M8 × 45六角螺栓4個 | 4. M8 × 45 hexagonal bolt 4 |
| 5. M8螺母4個        | 5. M8 bolt 4                |

### (中切削)兩軸可調式T型

(Medium cutting) Type T with two adjustable spindles

- T型兩軸可調式多軸器可做小距離之鑽孔，攻牙作業，輕巧靈活，操作方便。
- T型兩軸可調式多軸器結構輕巧，適合在普通臺鑽上使用，使機臺發揮雙倍效率。
- Type T multi-spindle tool with two adjustable spindles can be used for drilling small-distance holes and tapping work. It is very convenient and easy to operate.
- With a light structure, Type T multi-spindle head with two adjustable spindles, it is very suitable for the bench drill and make its efficiency double.

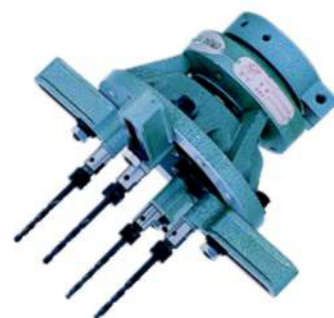


| 型號 Type  | ST108          | ST121           | ST121             | ST200              | ST200            |
|--|----------------|-----------------|-------------------|--------------------|------------------|
| 筒夾規格Collet/<br>最大鑽孔能力<br>Max.Drilling Capacity | ER11/7<br>C6/6 | ER16/10<br>C9/9 | ER20/13<br>C12/12 | ER20/13<br>ER25/16 | MT2/16<br>MT3/18 |
| 轉速比 Gear Ratio                                 | 1:1<br>1:2     | 1:1<br>1:2      | 1:1               | 1:1                | 1:1              |
| 最小距離(二軸間)<br>Lowest Distance(Two Spindle)      | 18             | 24              | 27                | 45                 | 45               |
| 最大軸心範圍<br>Max.Range of Centers                 | 108            | 121             | 121               | 200                | 200              |
| 軸數<br>Spindle                                  | 2              | 2               | 2                 | 2                  | 2                |

### (中切削)可調式樣A型

(Medium cutting) Type A adjustable type

- A型四軸可調式多軸器用于小距離加工作業
- 可依實際需求選用2-4軸。
- A型四軸可調式多軸器結構輕巧，適合在普通臺鑽上使用，使機臺發揮四倍的效率。
- Type A multi-spindle tool with four adjustable spindles can be used for short-distance work.
- 2-4 spindles can be selected according to actual situation.
- With a light structure, Type A multi-spindle tool with four adjustable spindles is very suitable for the bench drill and may increase its efficiency by four times.



| 型號 Type  | SA116          | SA124           | SA124             |
|--|----------------|-----------------|-------------------|
| 筒夾規格Collet/<br>最大鑽孔能力<br>Max-Drilling Capacity | ER11/7<br>C6/6 | ER16/10<br>C9/9 | ER20/13<br>C12/12 |
| 轉速比<br>Gear Ratio                              | 1:1.35         | 1:1.3           | 1:1.3             |
| 最小距離(二軸間)<br>Lowest Distance                   | 18             | 26              | 28                |
| 最大軸心範圍<br>Max-Range of Centers                 | 100            | 124             | 124               |
| 軸數<br>Spindle                                  | 2-4            | 2-4             | 2-4               |

### (中切削)U型圓型多軸器

(Medium cutting) Type U round shaft multi-spindle tool

- 本體結構利用齒輪箱配合萬向節所組成，容易調整加工孔距不受齒輪所限制，節省調整的時間，也少有死角的限制，適合加工接近圓周分布孔的工作，是可調式中最容易操作使用的規格。為保萬向節頭之壽命，移動範圍不得超過15度，等于垂直之前後左右30mm以內。  
(盡量配合工作之孔距坐標，設計齒輪箱結構即定鑽孔位)
- The basic frame consists of gear case and cardan joint. The distance of hole will be easy to control and not to be restricted by gears. The set up time is thus saved and it is mostly free of dead angles. It is very suitable for working of round holes and is the easiest to operate among the adjustable type. To ensure the lifetime of the cardan joint, the moving range should be confined within 15 degrees, which means within a distance of 30mm to the vertical status.  
(We will design the structure of gear case, that is, the position of the boring hole as much as possible according to the coordinate of per hole.)



#### ※ 萬向節注意事項:

- 1 調整時不能超過規定的角度15度
- 2 如超過此極限心軸易磨損或斷裂
- 3 工作時應經常加潤滑油脂

#### ※ Note of cardan joint

1. Do not set the angle to more than the specified 15 degrees.
2. If the limit is exceeded, the shaft will be easy to wear or break.
3. During work, lubrication should be added frequently.

| 型號 Type  | SU80 | SU110  | SU165  | SU200  | SU250  | SU300  |
|--|------|--|--|--|--|--|
| 筒夾規格Collet/<br>最大鑽孔能力<br>Max.Drilling Capacity | D4   | ER8/5 C5/5<br>ER11/7 C6/6<br>ER16/10 C9/9<br>ER20/13<br>C12/12 | ER8/5 C5/5<br>ER11/7 C6/6<br>ER16/10 C9/9<br>ER20/13<br>C12/12 | ER8/5 C5/5<br>ER11/7 C6/6<br>ER16/10 C9/9<br>ER20/13<br>C12/12 | ER8/5 C5/5<br>ER11/7 C6/6<br>ER16/10 C9/9<br>ER20/13<br>C12/12 | ER8/5 C5/5<br>ER11/7 C6/6<br>ER16/10 C9/9<br>ER20/13<br>C12/12 |
| 轉速比<br>Gear Ratio                              | 1:1  | 1:1<br>1:2   | 1:1<br>1:2   | 1:1<br>1:2   | 1:1<br>1:2   | 1:1<br>1:2   |
| 最小距離(二軸間)<br>Lowest Distance(Two Spindle)      | 10   | 13<br>18<br>26<br>28   | 13<br>18<br>26<br>28   | 13<br>18<br>26<br>28   | 13<br>18<br>26<br>28   | 13<br>18<br>26<br>28   |
| 最大軸心範圍<br>Max.Range of Centers                 | 80   | 110  | 165  | 200  | 250  | 300  |
| 軸數<br>Spindle                                  | 2-4  | 2-6  | 2-10   | 4-12   | 4-12   | 4-14   |

### (中切削)U型方型多軸器

(Medium cutting) Type U square shaft multi-spindle tool

- 方型可調式多軸器結構與圓型相同。工作孔距如屬直線或長方型萬向多軸器，以免移位置太大損害萬向節接頭壽命。使用方法與圓型相同。  
(盡量配合工作之孔距坐標，設計齒輪箱結構即定鏜孔位)
- The structure of the square shaft multi-spindle tool is the same as the structure of the round shaft multi-spindle tool. This multi-spindle tool is suitable for the straight line or the rectangular working hole. When using, don't move too much to reduce the lifetime of the cardan joint. The usage is also the same as the round shaft one.  
(We will design the structure of gear case, that is, the position of the boring hole as much as possible according to the coordinate of per hole.)



#### ※ 萬向節注意事項:

- 1 調整時不能超過規定的角度15度
- 2 如超過此極限心軸易磨損或斷裂
- 3 工作時應經常加潤滑油脂

#### ※ Note of cardan joint

1. Do not set the angle to more than the specified 15 degrees.
2. If the limit is exceeded, the shaft will be easy to wear or break.
3. During work, lubrication should be added frequently.

### (中切削)U型圓型多軸器

(Medium cutting) Type U round shaft multi-spindle tool

- 方型可調式多軸器結構與圓型相同。工作孔距如屬直線或長方型萬向多軸器，以免移位置太大損害萬向節接頭壽命。使用方法與圓型相同。  
(盡量配合工作之孔距坐標，設計齒輪箱結構即定鏜孔位)
- The structure of the square shaft multi-spindle tool is the same as the structure of the round shaft multi-spindle tool. This multi-spindle tool is suitable for the straight line or the rectangular working hole. When using, don't move too much to reduce the lifetime of the cardan joint. The usage is also the same as the round shaft one.  
(We will design the structure of gear case, that is, the position of the boring hole as much as possible according to the coordinate of per hole.)



#### ※ 萬向節注意事項:

- 1 調整時不能超過規定的角度15度
- 2 如超過此極限心軸易磨損或斷裂
- 3 工作時應經常加潤滑油脂

#### ※ Note of cardan joint

1. Do not set the angle to more than the specified 15 degrees.
2. If the limit is exceeded, the shaft will be easy to wear or break.
3. During work, lubrication should be added frequently.

| 型號 Type  | SU100×165   | SU120×200   | SU120×300   | SU160×450   | SU220×360   | SU250×500   |
|--|---|---|---|---|---|---|
| 筒夾規格Collet/<br>最大鑽孔能力<br>Max.Drilling Capacity | ER8/5<br>ER11/7<br>ER16/10<br>ER20/13<br>C5/5<br>C6/6<br>C9/9<br>C12/12 | ER8/5<br>ER11/7<br>ER16/10<br>ER20/13<br>C5/5<br>C6/6<br>C9/9<br>C12/12 | ER8/5<br>ER11/7<br>ER16/10<br>ER20/13<br>C5/5<br>C6/6<br>C9/9<br>C12/12 | ER8/5<br>ER11/7<br>ER16/10<br>ER20/13<br>C5/5<br>C6/6<br>C9/9<br>C12/12 | ER8/5<br>ER11/7<br>ER16/10<br>ER20/13<br>C5/5<br>C6/6<br>C9/9<br>C12/12 | ER8/5<br>ER11/7<br>ER16/10<br>ER20/13<br>C5/5<br>C6/6<br>C9/9<br>C12/12 |
| 轉速比 Gear Ratio                                 | 1:1<br>1:2  | 1:1<br>1:2  | 1:1<br>1:2  | 1:1<br>1:2  | 1:1<br>1:2  | 1:1<br>1:2  |
| 最小距離(二軸間)<br>Lowest Distance(Two Spindle)      | 13<br>18<br>26<br>28  | 13<br>18<br>26<br>28  | 13<br>18<br>26<br>28  | 13<br>18<br>26<br>28  | 13<br>18<br>26<br>28  | 13<br>18<br>26<br>28  |
| 最大軸心範圍<br>Max.Range of Centers                 | 100×165   | 120×200   | 120×300   | 160×450   | 220×360   | 250×500   |
| 軸數<br>Spindle                                  | 2-8   | 2-12  | 4-16  | 4-16  | 6-14  | 4-18  |

| 型號 Type  | SU170X200   | SU300X400   | SU400X550   | SU450X550   | SU150X800   | SU300X1000  |
|--|---|---|---|---|---|---|
| 筒夾規格Collet/<br>最大鑽孔能力<br>Max.Drilling Capacity | ER8/5<br>ER11/7<br>ER16/10<br>ER20/13<br>C5/5<br>C6/6<br>C9/9<br>C12/12 | ER8/5<br>ER11/7<br>ER16/10<br>ER20/13<br>C5/5<br>C6/6<br>C9/9<br>C12/12 | ER8/5<br>ER11/7<br>ER16/10<br>ER20/13<br>C5/5<br>C6/6<br>C9/9<br>C12/12 | ER8/5<br>ER11/7<br>ER16/10<br>ER20/13<br>C5/5<br>C6/6<br>C9/9<br>C12/12 | ER8/5<br>ER11/7<br>ER16/10<br>ER20/13<br>C5/5<br>C6/6<br>C9/9<br>C12/12 | ER8/5<br>ER11/7<br>ER16/10<br>ER20/13<br>C5/5<br>C6/6<br>C9/9<br>C12/12 |
| 轉速比 Gear Ratio                                 | 1:1<br>1:2  | 1:1<br>1:2  | 1:1<br>1:2  | 1:1<br>1:2  | 1:1<br>1:2  | 1:1<br>1:2  |
| 最小距離(二軸間)<br>Lowest Distance(Two Spindle)      | 13<br>18<br>26<br>28  | 13<br>18<br>26<br>28  | 13<br>18<br>26<br>28  | 13<br>18<br>26<br>28  | 13<br>18<br>26<br>28  | 13<br>18<br>26<br>28  |
| 最大軸心範圍<br>Max.Range of Centers                 | 170X200   | 300X400   | 400X550   | 450X550   | 150X800   | 300X1000  |
| 軸數<br>Spindle                                  | 2-12  | 4-16  | 4-18  | 4-18  | 4-18  | 4-18  |

### (重切削)U型系列多軸器

(Heavy cutting) Type U multi-spindle tool

■ 本體結構利用齒輪箱配合萬向節頭所組成，容易調整加工孔距不受齒輪所限制，節省調整的時間，也少有死角的限制，適合加工接近圓周分布孔的工件。其齒輪、軸承、輸出軸、萬向節均採用強力系列，適合加工鋼件等強力場合。為保萬向節頭之壽命，移動範圍不得超過15度，等于垂直之前後左右30mm以內。  
(盡量配合工作之孔距坐標，設計齒輪箱結構即定鏜孔位)

■ The basic frame consists of gear case and cardan joint. The hole-distance is easy to control and will not be affected by the gears. The set up time is thus saved and it is mostly free of dead angles. It is very suitable for working of round holes. The gear, bearing, output shaft and cardan joint are all intensified, so it is good at machining hard parts such as steel parts. To ensure the lifetime of the cardan joint, the moving range should be confined within 15 degrees, which means within a distance of 30mm to the vertical status.  
(We will design the structure of gear case, that is, the position of the boring hole as much as possible according to the coordinate of per hole.)



#### ※ 萬向節注意事項

- 1 調整時不能超過規定的角度15度
- 2 如超過此極限心軸易磨損或斷裂
- 3 工作時應經常加潤滑油脂

#### ※ Note of cardan joint

1. Do not set the angle to more than the specified 15 degrees.
2. If the limit is exceeded, the shaft will be easy to wear or break.
3. During work, lubrication should be added frequently.

### 固定式系列多軸器 (中切削/重切削/超重切削)

Fixed multi-spindle tool (Medium cutting/Heavy cutting/overweight cutting)

- 固定型機種軸數不拘，鑽軸型式，尺寸大小可依客戶之需求設計。
- 大量生產高精度之產品，請使用固定型多軸器，外型小，比活動式更耐用、更精確，并可減少調整加工孔距的時間。
- 可避免因調整錯誤，以致產品損壞所受的損失。
- 不同尺寸的鑽頭或不同牙距的絲攻均可同時加工。
- 固定型多軸器，請加導孔治具，使多軸頭容易對準工件，提升產品品質。
- 軸距分布尺寸：在尺寸可調整到的範圍之內均可制作成固定式。



WWFB/WFB/FB型  
(TYPE WWFB/WFB/FB)



WFT/FT型  
(TYPE WFT/FT)

- There are various options for the number of shafts and the shaft types of the fixed type. The dimension can also be designed per customer's request.
- The fixed multi-spindle tool is very good for the volume production of high-precision parts. It is small but more durable than the non-fixed type. It is also more precise and may help to reduce the set up time for the working hole.
- Error due to set up mistake, which may lead to part damage, can be avoided.
- Drill bits and taps of different sizes may run at the same time.
- When running fixed multi-spindle tool, please use fixture of guiding holes, which can help the multi spindles to accurately aim at the part so to improve the quality of the part.
- Shaft distance distribution: as long as the dimension is within the range, fixed type can be made.

| 型號 Type  | SWU165            | SWU200            | SWU250            | SWU100 × 165      | SWU120 × 200      | SWU120 × 300      |
|--|-------------------|-------------------|-------------------|-------------------|-------------------|-------------------|
| 筒夾規格Collet/<br>最大鑽孔能力<br>Max.Drilling Capacity | ER20/13<br>C12/12 | ER20/13<br>C12/12 | ER20/13<br>C12/12 | ER20/13<br>C12/12 | ER20/13<br>C12/12 | ER20/13<br>C12/12 |
| 轉速比<br>Gear Ratio                              | 1:1               | 1:1               | 1:1               | 1:1               | 1:1               | 1:1               |
| 最小距離(二軸間)<br>Lowest Distance(Two Spindle)      | 42                | 42                | 42                | 42                | 42                | 42                |
| 最大軸心範圍<br>Max.Range of Centers                 | 165               | 200               | 250               | 100 × 165         | 120 × 200         | 120 × 300         |
| 軸數<br>Spindle                                  | 2-10              | 4-12              | 4-12              | 3-8               | 4-12              | 6-14              |



WFA/FA型  
(TYPE WFA/FA)



FU/WFU方型  
(FU/WFU SQUARE TYPE)



FU/WFU圓型  
(FU/WFU ROUND TYPE)

| 型號<br>Type   | 最大軸心範圍<br>Max. Axis scope | 型號<br>Type   | 最大軸心範圍<br>Max. Axis scope |
|--------------|---------------------------|--------------|---------------------------|
| FA124        | Φ124                      | WFB130       | Φ130                      |
| FA200        | Φ200                      | WFB170       | Φ170                      |
| FA250        | Φ250                      | WFB210       | Φ210                      |
| FA160 × 250  | 160 × 250                 | WFB250       | Φ250                      |
| FA250 × 320  | 250 × 320                 | WFB300       | Φ300                      |
| FA200 × 400  | 200 × 400                 | WFB400       | Φ400                      |
| FA200 × 600  | 200 × 600                 | WFB450       | Φ450                      |
| FB90         | Φ90                       | WFB130 × 260 | 130 × 260                 |
| FB130        | Φ130                      | WFB300 × 400 | 300 × 400                 |
| FB170        | Φ170                      | WFT200       | Φ200                      |
| FB210        | Φ210                      | WFT250       | Φ250                      |
| FB300        | Φ300                      | WFT300       | Φ300                      |
| FB400        | Φ400                      | WFU110       | Φ110                      |
| FB450        | Φ450                      | WFU165       | Φ152                      |
| FB130 × 260  | 130 × 260                 | WFU200       | Φ190                      |
| FB300 × 400  | 300 × 400                 | WFU250       | Φ240                      |
| FT52         | Φ52                       | WFU100 × 165 | 90 × 152                  |
| FT121        | Φ121                      | WFU120 × 200 | 102 × 190                 |
| FT200        | Φ200                      | WFU120 × 300 | 102 × 290                 |
| FT300        | Φ300                      | GFA124       | Φ124                      |
| FT400        | Φ400                      | GFA200       | Φ200                      |
| FU110        | Φ100                      | GFA250       | Φ250                      |
| FU165        | Φ165                      | GFA160 × 250 | 160 × 250                 |
| FU200        | Φ200                      | GFA250 × 320 | 250 × 320                 |
| FU250        | Φ250                      | GFA200 × 400 | 200 × 400                 |
| FU300        | Φ300                      | GFA200 × 600 | 200 × 600                 |
| FU100 × 165  | 100 × 165                 | WWFB200      | Φ200                      |
| FU120 × 200  | 120 × 200                 | WWFB300      | Φ300                      |
| FU120 × 300  | 120 × 300                 | WWFB400      | Φ400                      |
| FU160 × 450  | 160 × 450                 | WWFB500      | Φ500                      |
| FU220 × 360  | 220 × 360                 |              |                           |
| FU250 × 500  | 250 × 500                 |              |                           |
| WFA124       | Φ124                      |              |                           |
| WFA200       | Φ200                      |              |                           |
| WFA250       | Φ250                      |              |                           |
| WFA160 × 250 | 160 × 250                 |              |                           |
| WFA250 × 320 | 250 × 320                 |              |                           |
| WFA200 × 400 | 200 × 400                 |              |                           |
| WFA200 × 600 | 200 × 600                 |              |                           |

### 固定型加導孔板 (標準樣式)

Fixed type with board of guiding hole (standard type)

固定型加導孔板多軸器準確耐用，在更換工件時，有很多空間取付方便，不會受到治具之妨礙。所加工出來的產品更精確，多軸器更耐用。使用多軸器最標準的方法。

Fixed multi-spindle tool with board of guiding hole is accurate and durable. There is enough room for changing parts and work won't be affected by fixture either. Parts machined with it are more accurate and the multi-spindle tool is more durable. It is most standard multi-spindle tool solution.

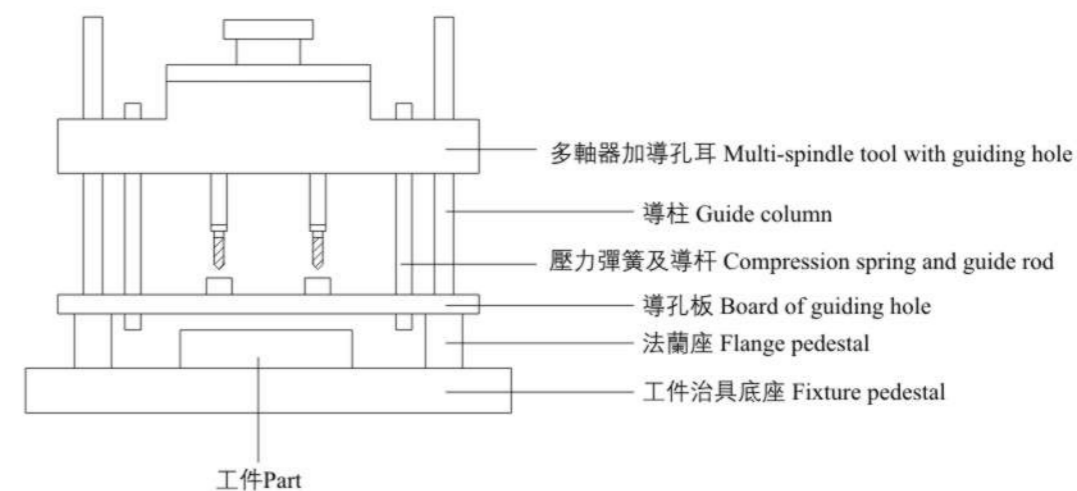
### FIXED TYPE SPINDLE HEAD

- Fixed type spindle head is for mass product design. The spindle head depend on customer's requirement to design And make.
- The fixed type can save time to adjust and more durable. The fixed spindle head can avoid the worker make wrong adjustment to damage the materials. The fixed spindle head can add guide hole on the head to help the worker to adjust the tooing.
- The fixed type spindle head can add guide plate for special drilling, the guide plate can guide the correct position during the work and to avoid the bit slip.



### 多軸器加工結構圖 (多軸器+導孔板與工件治具可分解模式)

Multi-spindle tool structure chart (multi-spindle tool + board of guiding hole + fixtures)





# 多軸器系列

Multi-Spindle Drilling & Tapping Head Series

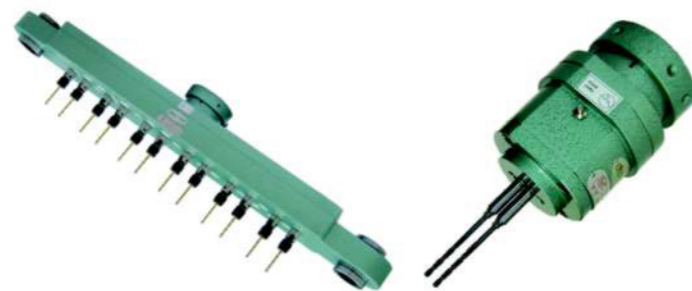
<http://www.wxnjkd.com>



## 多軸器 (固定式系列) Multi-Spindle head(Fixed series)



一鑽一攻雙頭機,配合治具,加工氣缸蓋  
Double head machine with one drill and one tap can process cylinder head using a jig.



超長型固定式多軸器  
Extra length fixed multi-spindle tool



小距離加工的固定式  
Fixed processing of small distance



縫紉機機頭加工樣式  
The head processing mode of sartorius



縫紉機機頭加工樣式  
The head processing mode of sartorius



缸體加工,側面定位,雙油缸夾緊  
Cylinder process, side locate and double cylinder clamp



U型固定式,配合油壓卡盤  
(工件硬度28-32HRC)  
U-type fixed model, with oil pressure chuck  
(workpiece rigidity: 28-32HRC)



冷卻系統與多軸器的結合  
Combination of cooling system and multi-spindle head



單軸偏位加工的解決方案  
Solution of uniaxial deviation process

## 配件 Accessory



傳統萬向節  
Traditional cardan joint



快換萬向節  
Quick set-up cardan joint

| 品名 Name                        | 型號 Type     | 連接內孔直徑<br>Connect I.D. (inner diameter) | 外圓直徑<br>O.D. (outer diameter) |
|--------------------------------|-------------|---|-------------------------------|
| 傳統萬向節 Traditional cardan joint | NSC-10-01AA | φ 10                                    | φ 22                          |
| 傳統萬向節 Traditional cardan joint | NSC-10-01A  | φ 10                                    | φ 19                          |
| 傳統萬向節 Traditional cardan joint | NSC-08-01A  | φ 8                                     | φ 15                          |
| 傳統萬向節 Traditional cardan joint | NSC-06-01A  | φ 6                                     | φ 12                          |

用六角傳動的快換式萬向節,具有高强度,高剛性,方便快捷之優點。  
The hexagonal driven quick set-up cardan joint has the advantages of high strength, high rigidity, convenience and immediacy.

| 品名 Name                         | 型號 Type     | 六角對邊<br>Hexagonal subtense | 外圓直徑 O.D. (outer diameter) |
|---------------------------------|-------------|----------------------------|----------------------------|
| 快換萬向節 Quick set-up cardan joint | NSC-14-06A6 | 12.8                       | φ 29.5                     |



特殊擺臂  
不同情況可靈活運用  
Special swing arm  
Apply actively under different cases



徑向浮動輸出軸,  
可以用于孔位微偏時的攻牙  
The radial floating output shaft  
can be used for tapping teeth when  
the hole is small.

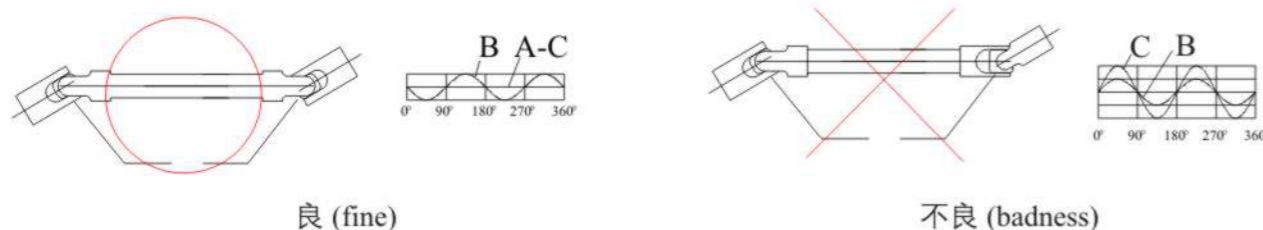


徑向浮動輸出軸不同牙距螺  
孔可同時加工  
Radial Floating output shaft  
Simultaneous processing of  
screws with different pitch

### 萬向節組裝注意事項 (Note of cardan joint installation)

U 型多軸器輸出軸組由上下 2 個萬向節配合六角傳動軸組成，組裝時須注意萬向節內側爪須同一位置，方向，以免造成撓曲偏擺量過大損及其壽命。

The output shafts of the Type U multi-spindle tool consist of two (up and down) cardan joint and hexagonal driven shafts. When installing, note to have the inner clutches of the cardan joint in the same position and direction, and avoid too much wrest or twist that may cause damage or influence the lifetime.

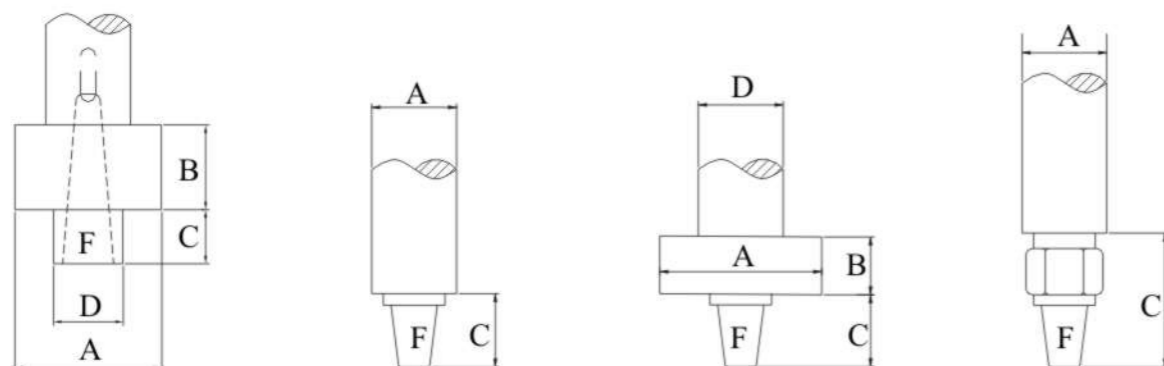


### 配合機種主軸端尺寸(常用規格如下列圖型，如特殊規格請另傳真尺寸)

Dimension of spindle nose (round shaft is the standard type, for specific type please fax the specified dimension)

鑽床、自動攻牙機、雙用鑽孔攻牙機、綜合中心機、空油壓動力頭、專用機之鑽孔主軸頭、攻牙主軸頭。

Drilling machine, automatic tapping machine, drilling and tapping machine, machining center, air and oil pressure drilling head, special drilling spindle head, tapping spindle head



### ▶ 機臺頭部尺寸 (Dimension of machine/tool head)

| 廠牌<br>Manufacturer brand | 機型<br>Machine type | A ± 0.01 | B | C | D ± 0.01 | F |
|--------------------------|--------------------|----------|---|---|----------|---|
|                          |                    |          |   |   |          |   |

A部尺寸請用分厘卡測定。Survey a size, please use micrometer.

### ▶ 加工條件注意事項 (Note of machining condition)

| 加工方式<br>Process method | 加工材質<br>Process material | 軸數<br>Number of shafts | 導孔板<br>Board of guiding hole | 定位孔<br>Locating hole |
|------------------------|--------------------------|------------------------|------------------------------|----------------------|
|                        |                          |                        |                              |                      |

#### 訂購時機種的選擇注意事項:

1. 加工尺寸之中心距離、孔徑、材料。
2. 加工內容，鑽床、攻牙、絞孔。
3. 配合鑽床之型式及廠牌編號。

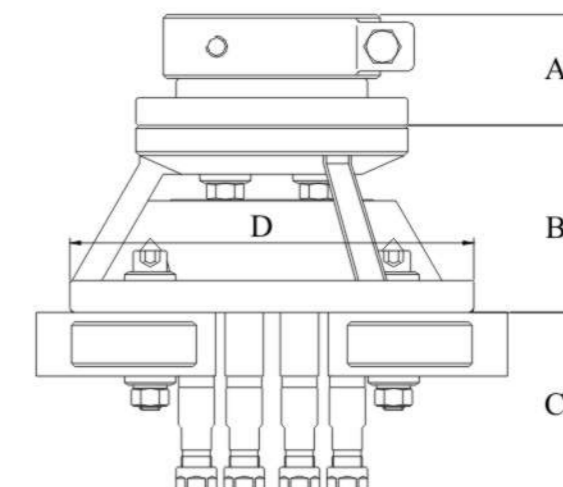
#### Purchase Note:

1. Processed center distance, hole size and material.
2. Process content, drilling machine, tapping, fraising.
3. Be compatible with the drilling machine (type and brand).

### 多軸器參數

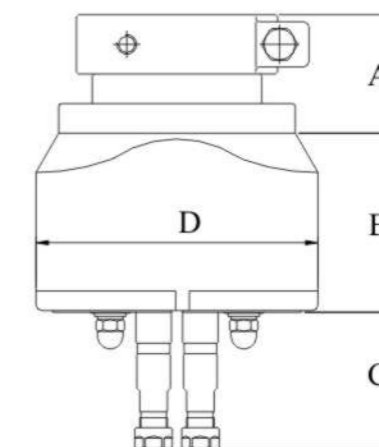
Specs of the multi-spindle tool

SA 型 (SA Type)



| 型號<br>Type | A        |          | B  | C   |      |      |      |    |    |    |     | D   |
|------------|----------|----------|----|-----|------|------|------|----|----|----|-----|-----|
|            | Φ65(MT2) | Φ95(MT3) |    | ER8 | ER11 | ER16 | ER20 | C5 | C6 | C9 | C12 |     |
| SA116      | 52       | /        | 88 | /   | 74   | 86   | 96   | /  | 80 | 99 | 102 | 190 |
| SA124      | 52       | 62       | 92 | /   | 74   | 86   | 96   | /  | 80 | 99 | 102 | 227 |

ST 型 (ST Type)

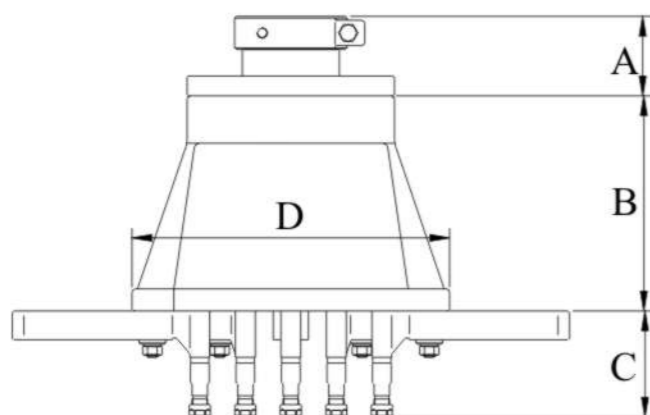


| 型號<br>Type | A        |          |          | B     | C   |      |      |      |    |    |    |     | D   |             |
|------------|----------|----------|----------|-------|-----|------|------|------|----|----|----|-----|-----|-------------|
|            | Φ65(MT2) | Φ95(MT3) | Φ95(MT4) |       | ER8 | ER11 | ER16 | ER20 | C5 | C6 | C9 | C12 |     | MT2         |
| ST108      | 67       | 105      | 134      | 84    | /   | 60   | 84   | 84   | /  | 67 | 87 | 91  | 133 | 140 × 107   |
| ST121      | 67       | 105      | 134      | 88    | /   | 60   | 84   | 84   | /  | 67 | 87 | 91  | 133 | 172 × 107   |
| ST200      | 57       | 67       | 96       | 129.5 | /   | 60   | 84   | 84   | /  | 67 | 87 | 91  | 133 | 258.5 × 136 |

# 多軸器系列

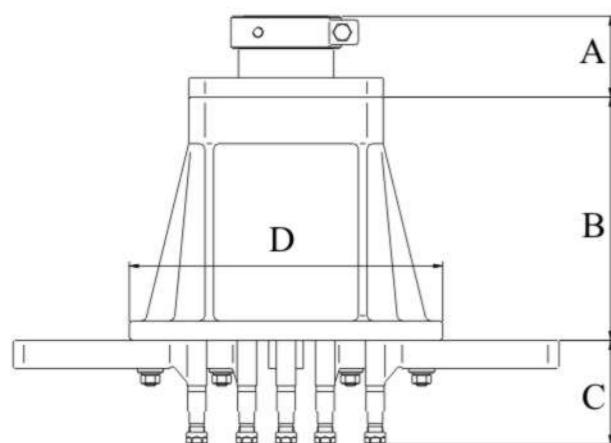
Multi-Spindle Drilling & Tapping Head Series

<http://www.wxnjjd.com>

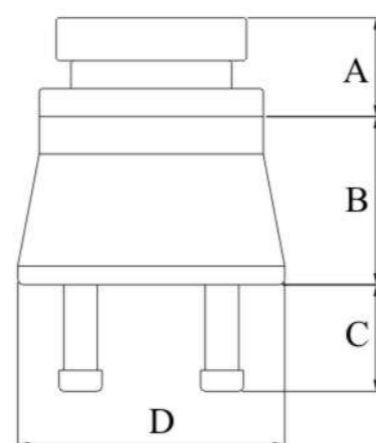


SU 圓型 (SU Round Type)

| 型號<br>Type | A         |           |           | B   | C   |      |      |      |    |    |    |    | D   |       |
|------------|-----------|-----------|-----------|-----|-----|------|------|------|----|----|----|----|-----|-------|
|            | Φ 65(MT2) | Φ 95(MT3) | Φ 95(MT4) |     | ER8 | ER11 | ER16 | ER20 | D4 | C5 | C6 | C9 |     | C12   |
| SU80       |           |           |           | 185 |     |      |      |      |    |    |    |    |     | Φ 202 |
| SU110      |           |           |           |     |     |      |      |      |    |    |    |    |     | Φ 288 |
| SU165      | 72        | 82        | 111       | 225 | 75  | 73   | 94   | 94   | 60 | 75 | 81 | 96 | 100 | Φ 350 |
| SU200      |           |           |           |     |     |      |      |      |    |    |    |    |     | Φ 396 |
| SU250      |           |           |           |     |     |      |      |      |    |    |    |    |     | Φ 430 |
| SU300      |           |           |           |     |     |      |      |      |    |    |    |    |     | Φ 490 |



SU 方型 (Su square type)



固定式 (Fixed type)

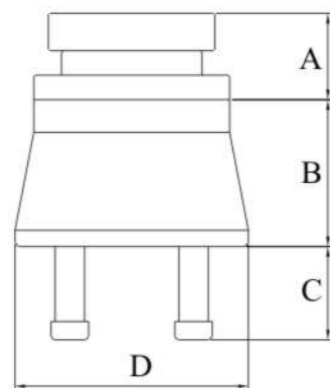
| 型號<br>Type   | A       |         |         | B   | C   |      |      |      |    |    |    |     | D |           |
|--------------|---------|---------|---------|-----|-----|------|------|------|----|----|----|-----|---|-----------|
|              | 65(MT2) | 95(MT3) | 95(MT4) |     | ER8 | ER11 | ER16 | ER20 | C5 | C6 | C9 | C12 |   |           |
| SU100 × 165  |         |         |         |     |     |      |      |      |    |    |    |     |   | 342 × 288 |
| SU120 × 200  |         |         |         |     |     |      |      |      |    |    |    |     |   | 390 × 302 |
| SU120 × 300  |         |         |         |     |     |      |      |      |    |    |    |     |   | 490 × 304 |
| SU160 × 450  |         |         |         |     |     |      |      |      |    |    |    |     |   | 585 × 285 |
| SU220 × 360  |         |         |         |     |     |      |      |      |    |    |    |     |   | 520 × 380 |
| SU250 × 500  |         |         |         |     |     |      |      |      |    |    |    |     |   | 660 × 400 |
| SU170 × 200  | 72      | 82      | 111     | 225 | 75  | 73   | 94   | 94   | 75 | 81 | 96 | 100 |   | 客户指定      |
| SU300 × 400  |         |         |         |     |     |      |      |      |    |    |    |     |   | 客户指定      |
| SU400 × 550  |         |         |         |     |     |      |      |      |    |    |    |     |   | 客户指定      |
| SU450 × 550  |         |         |         |     |     |      |      |      |    |    |    |     |   | 客户指定      |
| SU150 × 800  |         |         |         |     |     |      |      |      |    |    |    |     |   | 客户指定      |
| SU300 × 1000 |         |         |         |     |     |      |      |      |    |    |    |     |   | 客户指定      |

| 型號<br>Type  | A       |         |           | B   | C    |      |      |      |      |      | D |  |           |
|-------------|---------|---------|-----------|-----|------|------|------|------|------|------|---|--|-----------|
|             | 65(MT2) | 95(MT3) | Φ 95(MT4) |     | ER11 | ER16 | ER20 | C6   | C9   | C12  |   |  |           |
| FA124       | 57      | 67      | 96        | 122 |      |      |      |      |      |      |   |  | Φ 207     |
| FA200       |         |         |           |     |      |      |      |      |      |      |   |  | Φ 272     |
| FA250       |         |         |           |     |      |      |      |      |      |      |   |  | Φ 322     |
| FA160 × 250 | 72      | 82      | 111       | 108 | 48   | 62.5 | 65.5 | 54.3 | 67.3 | 73.1 |   |  | 326 × 236 |
| FA250 × 320 |         |         |           |     |      |      |      |      |      |      |   |  | 410 × 340 |
| FA200 × 400 |         |         |           |     |      |      |      |      |      |      |   |  | 500 × 280 |

| 型號<br>Type | A       |         |         | B     | C   |      |      |      |    |      |      |      | D |           |
|------------|---------|---------|---------|-------|-----|------|------|------|----|------|------|------|---|-----------|
|            | 65(MT2) | 95(MT3) | 95(MT4) |       | ER8 | ER11 | ER16 | ER20 | C5 | C6   | C9   | C12  |   |           |
| FT52       | 67      | 76      | 105     | 72    |     |      |      |      |    |      |      |      |   | Φ 103     |
| FT121      |         |         |         | 87.7  | 45  |      |      |      |    |      |      |      |   | 172 × 107 |
| FT200      | 67      | 76      | 105     | 106   |     | 48   | 62.5 | 65.5 |    | 54.3 | 67.3 | 73.1 |   | 245 × 135 |
| FT300      |         |         |         |       |     |      |      |      |    |      |      |      |   | 400 × 180 |
| FT400      | 72      | 82      | 111     | 107.5 |     | 48   | 60.5 | 63.5 |    | 54.3 | 65.3 | 69.3 |   | 480 × 180 |

# 多軸器系列

Multi-Spindle Drilling & Tapping Head Series



固定式(Fixed type)

| 型號 Type     | A       |         |         | B   | C    |      |      |      |      |    |      |      | D |           |
|-------------|---------|---------|---------|-----|------|------|------|------|------|----|------|------|---|-----------|
|             | 65(MT2) | 95(MT3) | 95(MT4) |     | ER8  | ER11 | ER16 | ER20 | C5   | C6 | C9   | C12  |   |           |
| FU110       |         |         |         |     |      |      |      |      |      |    |      |      |   | Φ230      |
| FU165       |         |         |         |     |      |      |      |      |      |    |      |      |   | Φ288      |
| FU200       |         |         |         |     |      |      |      |      |      |    |      |      |   | Φ340      |
| FU250       |         |         |         |     |      |      |      |      |      |    |      |      |   | Φ347      |
| FU300       |         |         |         |     |      |      |      |      |      |    |      |      |   | Φ434      |
| FU100 × 165 | 72      | 82      | 111     | 256 | 43.5 | 48   | 62.5 | 65.5 | 44.5 | 56 | 64.5 | 71.5 |   | 282 × 228 |
| FU120 × 200 |         |         |         |     |      |      |      |      |      |    |      |      |   | 332 × 244 |
| FU120 × 300 |         |         |         |     |      |      |      |      |      |    |      |      |   | 434 × 248 |
| FU160 × 450 |         |         |         |     |      |      |      |      |      |    |      |      |   | 585 × 285 |
| FU220 × 360 |         |         |         |     |      |      |      |      |      |    |      |      |   | 520 × 380 |
| FU250 × 500 |         |         |         |     |      |      |      |      |      |    |      |      |   | 660 × 400 |

| 型號 Type     | A       |         |         | B  | C   |      |      |      |    |    |    |     | D  |           |
|-------------|---------|---------|---------|----|-----|------|------|------|----|----|----|-----|----|-----------|
|             | 65(MT2) | 95(MT3) | 95(MT4) |    | ER8 | ER11 | ER16 | ER20 | C5 | C6 | C9 | C12 |    |           |
| FB90        |         |         |         |    |     |      |      |      |    |    |    |     |    | Φ138      |
| FB130       |         |         |         |    |     |      |      |      |    |    |    |     |    | Φ188      |
| FB170       |         |         |         |    |     |      |      |      |    |    |    |     |    | Φ236      |
| FB210       |         |         |         |    |     |      |      |      |    |    |    |     |    | Φ268      |
| FB300       | 72      | 82      | 111     | 56 |     |      |      | 54   |    |    |    |     | 60 | 326 × 350 |
| FB450       |         |         |         |    |     |      |      |      |    |    |    |     |    | 指定        |
| FB130 × 260 |         |         |         |    |     |      |      |      |    |    |    |     |    | 340 × 210 |
| FB300 × 400 |         |         |         |    |     |      |      |      |    |    |    |     |    | 指定        |

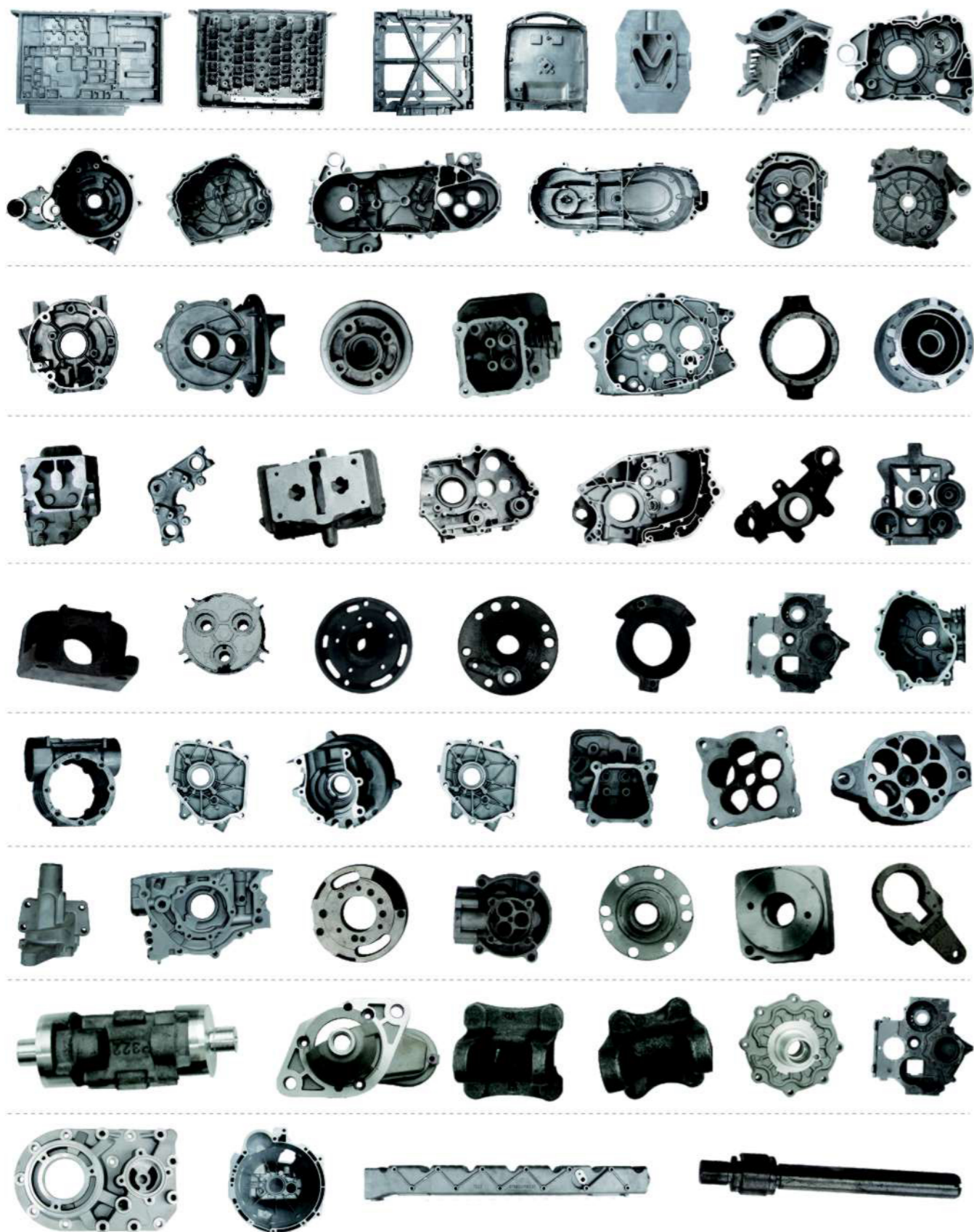
# 加工零件實例

Example of machining part



# 加工零件實例

Example of machining part



# 機床系列

Machine tools series



## 桌式導螺桿自動進刀攻牙機

Desk Lead Screw Automatic Feed Tapping Machine

| 規格          | Specification                  | JTDM-16      |
|-------------|--------------------------------|--------------|
| 工作桌面有效尺寸    | Table Diameter                 | Φ250         |
| 立柱外徑        | Column Diameter                | Φ85          |
| 主軸外徑        | Spindle Diameter               | Φ60          |
| 主軸錐度        | Spindle Taper                  | MT2/JT6/ER20 |
| 主軸心至工作桌面的距離 | Distance From Spindle To Table | 200mm-650mm  |
| 主軸行程        | Spindle Travel                 | 65mm         |
| 主軸轉速        | Spindle Speed                  | 500-750      |
| 主軸功率        | Spindle power                  | 2HP/4P       |
| 攻牙能力        | Tapping Capacity(S45C)         | M16          |



## 桌式油壓自動進刀鑽孔機床

Desk Hydraulic Automatic Feed Drilling Machine

| 規格          | Specification                  | JTDZ-20                     |
|-------------|--------------------------------|-----------------------------|
| 工作桌面有效尺寸    | Table Diameter                 | Φ250                        |
| 立柱外徑        | Column Diameter                | Φ85                         |
| 主軸外徑        | Spindle Diameter               | Φ60                         |
| 主軸錐度        | Spindle Taper                  | MT2/JT6/ER32                |
| 主軸心至工作桌面的距離 | Distance From Spindle To Table | 200mm-650mm                 |
| 主軸行程        | Spindle Travel                 | 130mm                       |
| 主軸轉速        | Spindle Speed                  | 1000-2000                   |
| 主軸功率        | Spindle power                  | 2HP/4P                      |
| 最大鑽孔能力      | Max. Tapping Capacity          | Φ20                         |
| 標準壓力        | Hydrall Height                 | 20Kg/cm <sup>2</sup> (2MPa) |



# 機床系列

Machine tools series



## 桌式油壓自動進刀鑽孔機床

Desk Hydraulic Automatic Feed Drilling Machine

| 規格          | Specification                  | JTDZ-25                     |
|-------------|--------------------------------|-----------------------------|
| 工作桌面有效尺寸    | Table Diameter                 | Φ 440                       |
| 立柱外徑        | Column Diameter                | Φ 102                       |
| 主軸外徑        | Spindle Diameter               | Φ 95                        |
| 主軸錐度        | Spindle Taper                  | MT3                         |
| 主軸心至工作桌面的距離 | Distance From Spindle To Table | 300mm-850mm                 |
| 主軸行程        | Spindle Travel                 | 140mm                       |
| 主軸轉速        | Spindle Speed                  | 285-2150                    |
| 主軸功率        | Spindle power                  | 2HP/6P                      |
| 最大鑽孔能力      | Max.Tapping Capacity           | (S45C)Φ 25                  |
| 標準壓力        | Hydrall Height                 | 20Kg/cm <sup>2</sup> (2MPa) |
| 總重量         | Weihgt                         | 500kg                       |



## 立式導螺桿自動進刀攻牙機

Vertical Lead Crew Automatic Feed Tapping Machine

| 規格          | Specification                  | JDM-25L      |
|-------------|--------------------------------|--------------|
| 工作桌面有效尺寸    | Table Diameter                 | Φ 440        |
| 立柱外徑        | Column Diameter                | Φ 102        |
| 主軸外徑        | Spindle Diameter               | Φ 95         |
| 主軸錐度        | Spindle Taper                  | MT3          |
| 主軸心至工作桌面的距離 | Distance From Spindle To Table | 100mm-1000mm |
| 主軸行程        | Spindle Travel                 | 70mm         |
| 主軸轉速        | Spindle Speed                  | 定速           |
| 主軸功率        | Spindle power                  | 2HP/8P       |
| 最大攻牙能力      | Max.Tapping Capacity           | (S45C)M25    |
| 總重量         | Weihgt                         | 400kg        |



## 立式油壓自動進刀鑽孔機床

Vertical Hydraulic Automatic Feed Drilling Machine

| 規格          | Specification                  | JDZ-25L                     |
|-------------|--------------------------------|-----------------------------|
| 工作桌面有效尺寸    | Table Diameter                 | Φ 440                       |
| 立柱外徑        | Column Diameter                | Φ 102                       |
| 主軸外徑        | Spindle Diameter               | Φ 95                        |
| 主軸錐度        | Spindle Taper                  | MT3                         |
| 主軸心至工作桌面的距離 | Distance From Spindle To Table | 100mm-1000mm                |
| 主軸行程        | Spindle Travel                 | 140mm                       |
| 主軸轉速        | Spindle Speed                  | 285-2150                    |
| 主軸功率        | Spindle power                  | 2HP/6P                      |
| 最大鑽孔能力      | Max.Tapping Capacity           | (S45C)Φ 25                  |
| 標準壓力        | Hydrall Height                 | 20Kg/cm <sup>2</sup> (2MPa) |
| 總重量         | Weihgt                         | 400kg                       |



## 桌式導螺桿自動進刀攻牙機

Desk Lead Crew Automatic Feed Tapping Machine

| 規格          | Specification                  | JTDM-25     |
|-------------|--------------------------------|-------------|
| 工作桌面有效尺寸    | Table Diameter                 | Φ 440       |
| 立柱外徑        | Column Diameter                | Φ 102       |
| 主軸外徑        | Spindle Diameter               | Φ 95        |
| 主軸錐度        | Spindle Taper                  | MT3         |
| 主軸心至工作桌面的距離 | Distance From Spindle To Table | 300mm-850mm |
| 主軸行程        | Spindle Travel                 | 70mm        |
| 主軸轉速        | Spindle Speed                  | 定速          |
| 主軸功率        | Spindle power                  | 2HP/8P      |
| 最大攻牙能力      | Max.Tapping Capacity           | (S45C)M25   |
| 總重量         | Weihgt                         | 500kg       |



# 機床系列

Machine tools series



## 桌式油壓自動進刀鑽孔機

Desk Hydraulic Automatic Feed Drilling Machine

| 規格          | Specification                  | JTDZ-35                     |
|-------------|--------------------------------|-----------------------------|
| 工作桌面有效尺寸    | Table Diameter                 | Φ 490                       |
| 立柱外徑        | Column Diameter                | Φ 130                       |
| 主軸外徑        | Spindle Diameter               | Φ 115                       |
| 主軸錐度        | Spindle Taper                  | MT4                         |
| 主軸心至工作桌面的距離 | Distance From Spindle To Table | 300mm-800mm                 |
| 主軸行程        | Spindle Travel                 | 140mm                       |
| 主軸轉速        | Spindle Speed                  | 480-720                     |
| 主軸功率        | Spindle power                  | 5HP/6P                      |
| 最大鑽孔能力      | Max.Drilling Capacity          | (S45C) Φ 35                 |
| 標準壓力        | Hydrall Height                 | 20Kg/cm <sup>2</sup> (2MPa) |
| 總重量         | Weihgt                         | 850kg                       |



## 桌式雙聯型鑽攻機床

Desk Double Bits Drilling Machine

| 規格          | Specification                   | JTDZ-25 / JTDZ-30     |
|-------------|---------------------------------|-----------------------|
| 工作桌面有效尺寸    | Table Diameter                  | 1120×550              |
| 立柱外徑        | Column Diameter                 | Φ 102 / Φ 102         |
| 主軸外徑        | Spindle Diameter                | Φ 95 / Φ 95           |
| 主軸錐度        | Spindle Taper                   | MT3 / MT3             |
| 主軸心至工作桌面的距離 | Distance From Spindle To Table  | 350-850mm / 350-850mm |
| 主軸行程        | Spindle Travel                  | 140mm / 70mm          |
| 主軸轉速        | Spindle Speed                   | 285-2150/定速           |
| 主軸功率        | Spindle power                   | 2HP/6P / 2HP/8P       |
| 主軸最大鑽孔、攻牙能力 | Max. Drilling, Tapping Capacity | (S45C) Φ 25 / M25     |
| 總重量         | Weihgt                          | 900kg                 |

注：雙聯型機床可以根據客戶的需要機頭可以任意組合；  
如：JTDZ-25/JTDM-25 JTDZ-25/JTDM-30等



## 桌式導螺桿自動進刀攻牙機

Desk Lead Crew Automatic Feed Tapping Machine

| 規格          | Specification                  | JTDM-30     |
|-------------|--------------------------------|-------------|
| 工作桌面有效尺寸    | Table Diameter                 | Φ 490       |
| 立柱外徑        | Column Diameter                | Φ 130       |
| 主軸外徑        | Spindle Diameter               | Φ 115       |
| 主軸錐度        | Spindle Taper                  | MT4         |
| 主軸心至工作桌面的距離 | Distance From Spindle To Table | 300mm-850mm |
| 主軸行程        | Spindle Travel                 | 70mm        |
| 主軸轉速        | Spindle Speed                  | 200-500     |
| 主軸功率        | Spindle power                  | 5HP/8P      |
| 最大攻牙能力      | Max.Tapping Capacity           | M30         |
| 總重量         | Weihgt                         | 800kg       |



## 桌式雙聯型鑽攻機床

Desk Double Bits Drilling Machine

| 規格          | Specification                  | JTDZ-35/JTDM30              |
|-------------|--------------------------------|-----------------------------|
| 工作桌面有效尺寸    | Table Diameter                 | 1200×600                    |
| 立柱外徑        | Column Diameter                | Φ 130/Φ 130                 |
| 主軸外徑        | Spindle Diameter               | Φ 115/Φ 115                 |
| 主軸錐度        | Spindle Taper                  | MT4/MT4                     |
| 主軸心至工作桌面的距離 | Distance From Spindle To Table | 300mm-850mm/300mm-850mm     |
| 主軸行程        | Spindle Travel                 | 180mm/70mm                  |
| 主軸轉速        | Spindle Speed                  | 480-1700/200-500            |
| 主軸功率        | Spindle power                  | 5HP/8P/5HP/8P               |
| 標準壓力        | Hydraulic Height               | 20kg/cm <sup>2</sup> (2MPa) |



# 機床系列

Machine tools series



## 桌式伺服鑽孔機

Desk s Servo Drilling Machine

| 規格          | Specification                  | NC-20       |
|-------------|--------------------------------|-------------|
| 工作桌面有效尺寸    | Table Diameter                 | Φ440        |
| 立柱外徑        | Column Diameter                | Φ102        |
| 主軸外徑        | Spindle Diameter               | Φ95         |
| 主軸錐度        | Spindle Taper                  | MT3         |
| 主軸心至工作桌面的距離 | Distance From Spindle To Table | 300mm-850mm |
| 主軸行程        | Spindle Travel                 | 140mm       |
| 主軸轉速        | Spindle Speed                  | 285-2150    |
| 主軸功率        | Spindle power                  | 2HP/6P      |
| 主軸進刀        | Spindle Feed                   | 無極變速        |
| 最大鑽孔能力      | Max.Tapping Capacity           | (S45C)Φ20   |
| 總重量         | Weihgt                         | 600kg       |

備注/Remarks: 攻牙功能/Tapping function



## 單機頭龍門鑽孔機

Single Head Gantry Drilling Machine

| 規格       | Specification         | BK600-90L-1                 |
|----------|-----------------------|-----------------------------|
| 工作桌面有效尺寸 | Table Diameter        | 600 × 580                   |
| 主軸外徑     | Spindle Diameter      | Φ90                         |
| 主軸錐度     | Spindle Taper         | MT3                         |
| 主軸行程     | Spindle Travel        | 140mm                       |
| 主軸轉速     | Spindle Speed         | 定速                          |
| 主軸功率     | Spindle power         | 3HP-4P                      |
| 最大鑽孔能力   | Max.Drilling Capacity | (S45C)Φ35                   |
| 標準壓力     | Hydrall Height        | 20Kg/cm <sup>2</sup> (2MPa) |
| 總重量      | Weihgt                | 800kg                       |



## 桌式伺服鑽孔機

Desk s Servo Drilling Machine

| 規格          | Specification                  | NC-30       |
|-------------|--------------------------------|-------------|
| 工作桌面有效尺寸    | Table Diameter                 | Φ490        |
| 立柱外徑        | Column Diameter                | Φ130        |
| 主軸外徑        | Spindle Diameter               | Φ115        |
| 主軸錐度        | Spindle Taper                  | MT4         |
| 主軸心至工作桌面的距離 | Distance From Spindle To Table | 300mm-800mm |
| 主軸行程        | Spindle Travel                 | 160mm       |
| 主軸轉速        | Spindle Speed                  | 選配          |
| 主軸功率        | Spindle power                  | 選配          |
| 最大鑽孔能力      | Max.Drilling Capacity          | (S45C)Φ30   |
| 主軸進刀        | Spindle Feed                   | 無極變速        |
| 總重量         | Weihgt                         | 850kg       |

備注/Remarks: 攻牙功能/Tapping function



## 龍門式一立三臥攻牙專用機

Gantry type one-vertical three-horizontal tapping special machine

| 規格         | Specification                  | BK1120-75L50W-4 |
|------------|--------------------------------|-----------------|
| 工作桌面有效尺寸   | Table Dimension                | 1120 700        |
| 主軸外徑       | Spindle Diameter               | Φ75 Φ50         |
| 主軸錐度       | Spindle Taper                  | MT3 JT6         |
| 主軸心至工作桌面距離 | Distance From Spindle to Table | 500mm 165mm     |
| 主軸行程       | Spindle Travel                 | 70mm 50mm       |
| 主軸轉速       | Spindle Speed                  | 500 500         |
| 主軸功率       | Spindle power                  | 2HP-8P 1HP-8P   |





# 機床系列

Machine tools series



## 三機頭臥式鑽孔專用機

Three-head horizontal drilling special machine

| 規格         | Specification                  | TK960-90W/60W/60W-3         |
|------------|--------------------------------|-----------------------------|
| 工作桌面有效尺寸   | Table Dimension                | 960 580                     |
| 主軸外徑       | Spindle Diameter               | Φ60 90 Φ60                  |
| 主軸錐度       | Spindle Taper                  | JT6 MT4 JT6                 |
| 主軸心至工作桌面距離 | Distance From Spindle to Table | 200mm 250mm 200mm           |
| 主軸行程       | Spindle Travel                 | 130mm 150mm 130mm           |
| 主軸轉速       | Spindle Speed                  | 1300 1400 1300              |
| 主軸功率       | Spindle power                  | 2HP-4P 5HP-4P 2HP-4P        |
| 標準壓力       | Hydraulic Height               | 20Kg/cm <sup>2</sup> (2MPa) |



## 八工位轉盤銑鑽機床

Eight-station rotary table milling machine tool



## 三機頭臥式攻牙專用機

Three-head horizontal tapping special machine

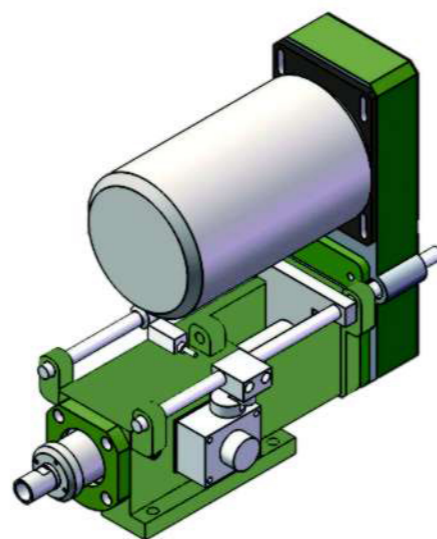
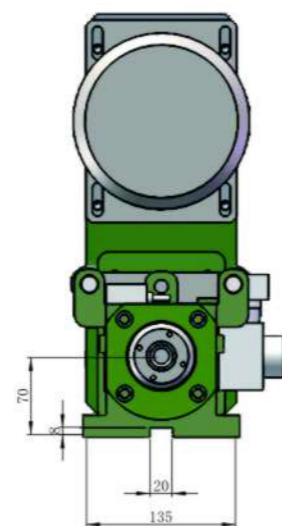
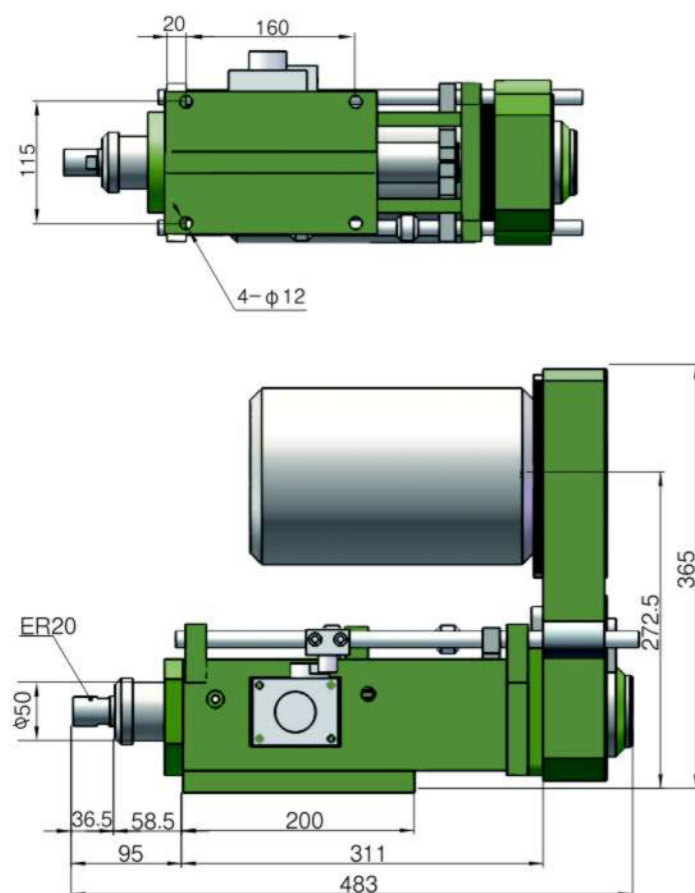
| 規格         | Specification                  | TK1600-1130-95W-3 |
|------------|--------------------------------|-------------------|
| 工作桌面有效尺寸   | Table Dimension                | 1600 1130         |
| 主軸外徑       | Spindle Diameter               | Φ95               |
| 主軸錐度       | Spindle Taper                  | MT3               |
| 主軸心至工作桌面距離 | Distance From Spindle to Table | 200mm             |
| 主軸行程       | Spindle Travel                 | 70mm              |
| 主軸轉速       | Spindle Speed                  | 600               |
| 主軸功率       | Spindle power                  | 3HP-8P            |



|           |                                |                            |
|-----------|--------------------------------|----------------------------|
| 型號        | Model number                   | TK2900*2500*7L*3W*EXT600-8 |
| 盤面        | Table                          | Φ1200                      |
| 立柱外徑      | Column Diameter                | Φ120/Φ150                  |
| 主軸錐度      | Spindle Taper                  | BT30/BT40/BT50             |
| 主軸心至盤面的距離 | Distance From Spindle To Table | 400mm                      |
| 主軸行程      | Spindle Travel                 | 140mm                      |
| 主軸轉速      | Spindle Speed                  | 1000-2000                  |
| 主軸功率      | Spindle power                  | 4HP/4P                     |
| 鑽孔能力      | Drilling Capacity(S45C)        | Φ35                        |
| 攻牙能力      | Tapping Capacity(S45C)         | M30                        |
| 多軸器       | Multi-spindle tool             | GFA200                     |

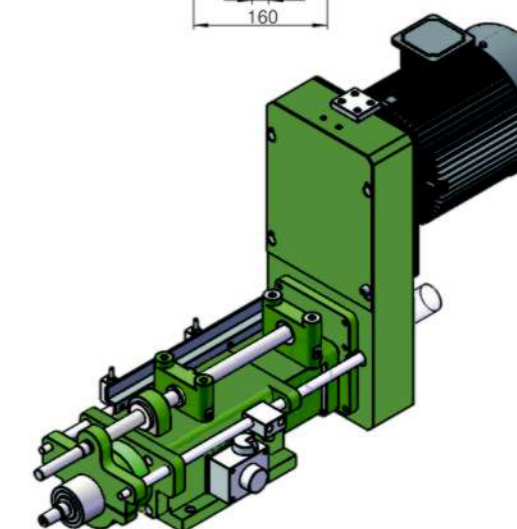
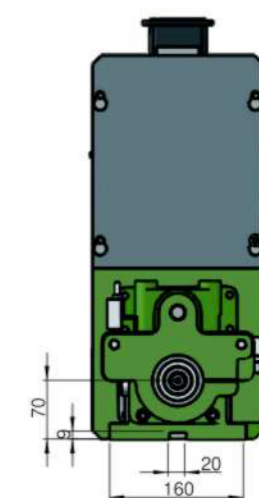
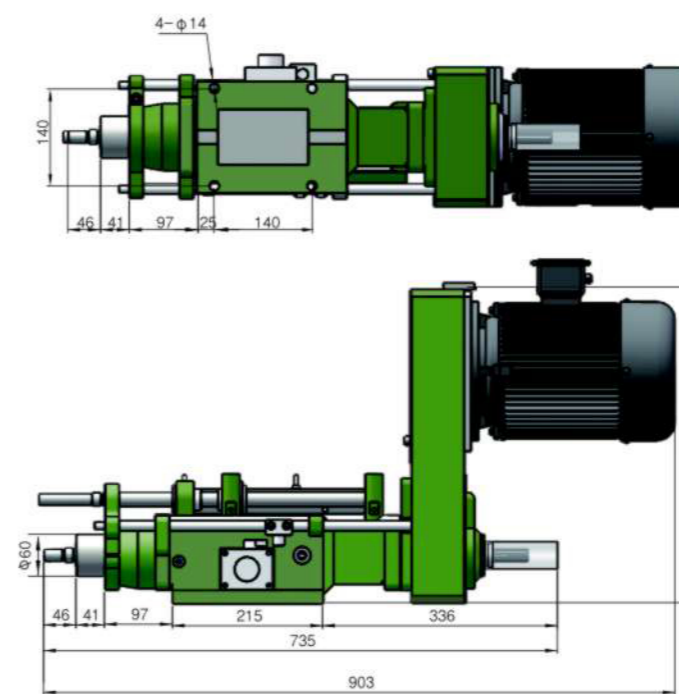
## BHD5空壓/油壓鑽孔動力頭

BHD5 Air pressure/Oil pressure drilling power head



## BHD6空壓/油壓鑽孔動力頭

BHD6 Air pressure/Oil pressure drilling power head



## BHD5-85空壓/油壓鑽孔動力頭

BHD5-85 Air pressure/Oil pressure drilling power head

| 規格    | Model                   | BHD5-85   |
|-------|-------------------------|---|
| 鑽孔能力  | Drilling Capacity(S45C) | Φ 13mm  |
| 最大行程  | Max.Stroke              | 85mm  |
| 最高轉速  | Max.RPM                 | 2500RPM   |
| 推進壓力  | Propel Pressure         | 空壓(A)5-8kg/cm <sup>2</sup> 油壓(H)20-25kg/cm <sup>2</sup> |
| 油缸面積  | Cylinder Diameter       | 前進(F)21.8kg/cm <sup>2</sup> 後退(B)13.5kg/cm <sup>2</sup> |
| 馬力    | Horsepower,3 Phase      | 1HP,220V/380V   |
| 傳動皮帶  | Transmission Belt       | 5M605或5M-655  |
| 總重    | Net Weight              | 33kg  |
| 主軸軸承  | Spindle Beaing          | 6004ZZ × 3 6004DDU × 1                                  |
| 皮帶輪軸承 | Pulley Bearing          | 6007ZZ × 2  |
| 前蓋油封  | Front Cover Seal        | 50 × 60 × 8   |
| 活塞O型環 | Piston O-ring           | 油壓55 × 65 × 5, 空壓55 × 5                                 |
| 前蓋O型環 | Front Cover O-ring      | 68 × 3  |
| 後蓋油封  | Back Cover Seal         | 38 × 50 × 8   |
| 主軸錐度  | Spindle Taper           | JT6/ER20  |
|       |                         | Roundness: ≤ 0.003mm                                    |

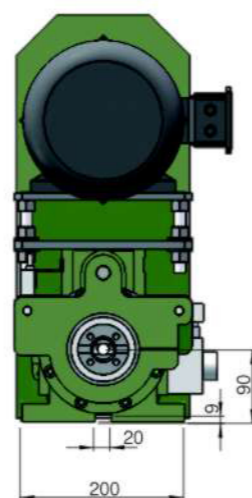
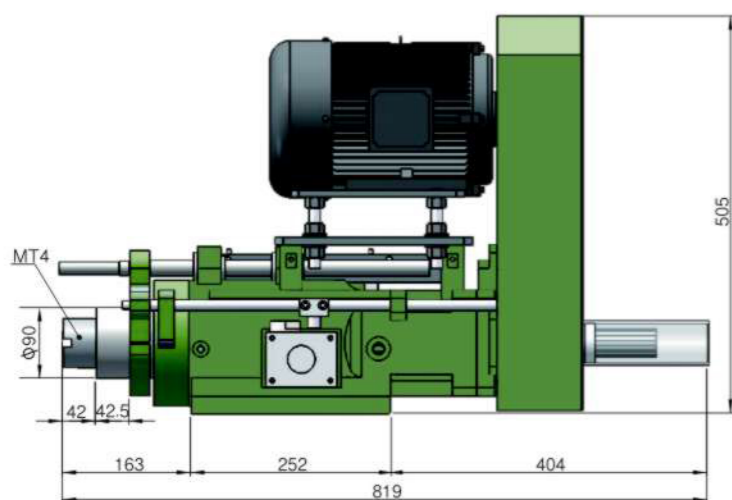
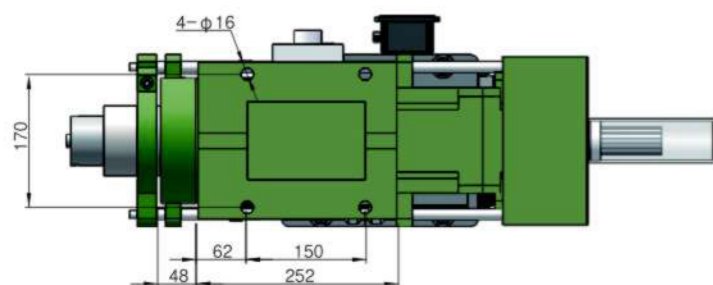
## BHD6-130空壓/油壓鑽孔動力頭

BHD6-130 Air pressure/Oil pressure drilling power head

| 規格    | Model                   | BHD6-130  |
|-------|-------------------------|---|
| 鑽孔能力  | Drilling Capacity(S45C) | Φ 20mm  |
| 最大行程  | Max.Stroke              | 130mm   |
| 最高轉速  | Max.RPM                 | 2000RPM   |
| 推進壓力  | Propel Pressure         | 空壓(A)10-15kg/cm <sup>2</sup> 油壓(H)20-30kg/cm <sup>2</sup> |
| 氣缸面積  | Cylinder Diameter       | 前進(F)39.8kg/cm <sup>2</sup> 後退(B)35.3kg/cm <sup>2</sup>   |
| 馬力    | Horsepower,3 Phase      | 2HP,220V/380V   |
| 傳動皮帶  | Transmission Belt       | A2 × Φ 100, 8M × 40T × 40W                                |
| 總重    | Net Weight              | 70kg  |
| 主軸軸承  | Spindle Bearing         | 6004ZZ × 1,32004 6005DDU × 1,600ZZ × 1,32005              |
| 皮帶輪軸承 | Pulley Bearing          | 6207ZZ × 2  |
| 前蓋油封  | Front Cover Seal        | 60 × 70 × 10  |
| 活塞O型環 | Piston O-ring           | 油壓80 × 90 × 6, 空壓80 × 5                                   |
| 前蓋O型環 | Front Cover O-ring      | 90 × 2  |
| 後蓋油封  | Back Cover Seal         | 55 × 65 × 8   |
| 主軸錐度  | Spindle Taper           | JT6/ER32  |
|       |                         | Roundness: ≤ 0.003mm                                      |

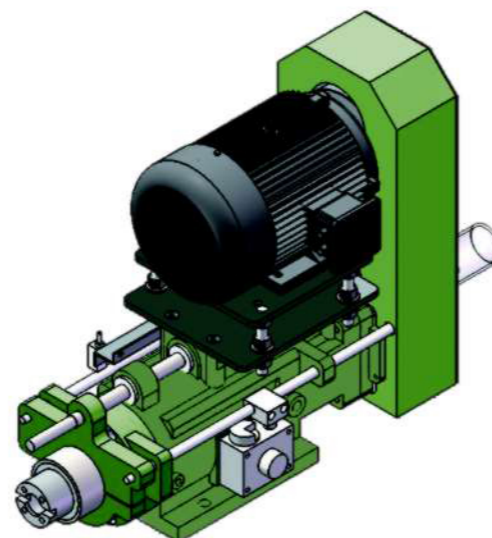
## BHD8油壓鑽孔動力頭

BHD8 Oil pressure drilling power head



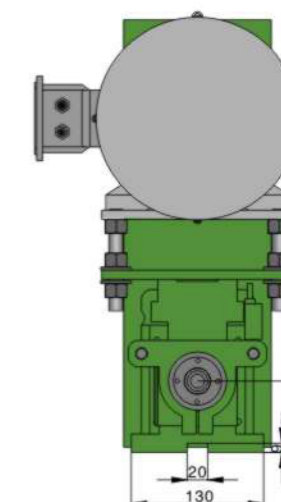
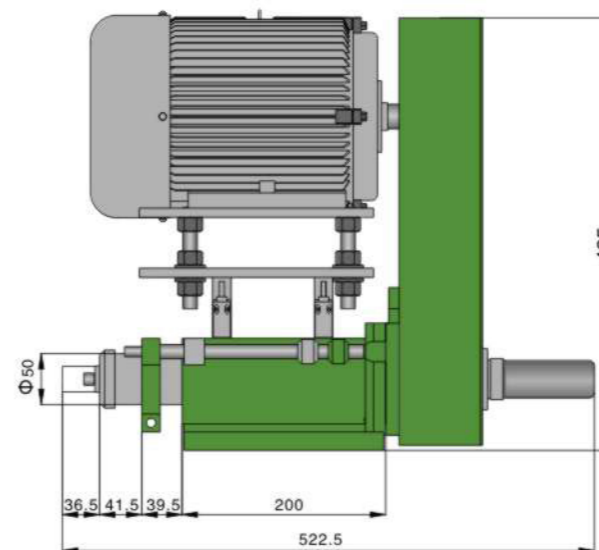
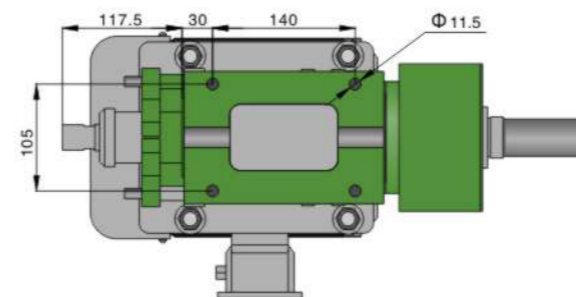
## BHD8-150油壓動力頭 BHD8-150 Hydraulic Power Head

| 規格    | Model                   | BHD8-150  |
|-------|-------------------------|---|
| 鑽孔能力  | Drilling Capacity(S45C) | Φ 35mm  |
| 最大行程  | Max.Stroke              | 150mm   |
| 最高轉速  | Max.RPM                 | 1500RPM   |
| 推進壓力  | Propel Pressure         | 油壓(H)20~35kg/cm <sup>2</sup>                            |
| 油缸面積  | Cylinder Diameter       | 前進(F)72.4kg/cm <sup>2</sup> 後退(B)59.1kg/cm <sup>2</sup> |
| 馬力    | Horsepower,3 Phase      | 3HP,220V/380V   |
| 傳動皮帶  | Transmission Belt       | B2 × Φ 140,8M × 52T × 45W                               |
| 總重    | Net Weight              | 100kg   |
| 主軸軸承  | Spindle Bearing         | 6008ZZ × 1,32008 6010DDU × 1,6010ZZ × 1,32010           |
| 皮帶輪軸承 | Pulley Bearing          | 6011ZZ × 2  |
| 前蓋油封  | Front Cover Seal        | 90 × 110 × 8  |
| 活塞O型環 | Piston O-ring           | 油壓 110 × 125 × 9  |
| 前蓋O型環 | Front Cover O-ring      | 125 × 2   |
| 後蓋油封  | Back Cover Seal         | 80 × 100 × 10   |
| 主軸錐度  | Spindle Taper           | MT4   |
|       |                         | Roundness: ≤ 0.003mm                                    |



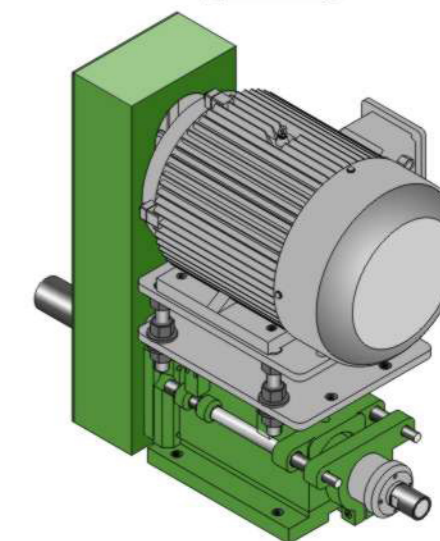
## N6攻牙動力頭

N6 Tapping Head

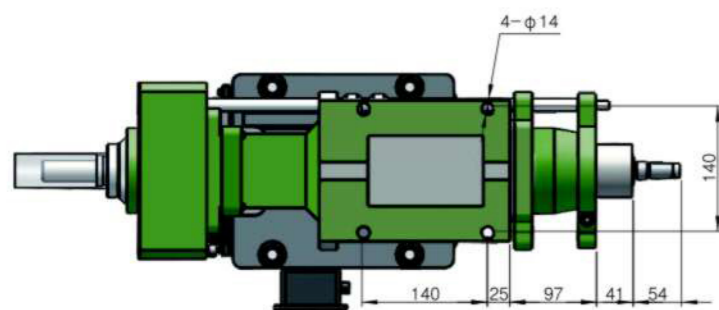


## N6-65攻牙動力頭 N6 Tapping Head

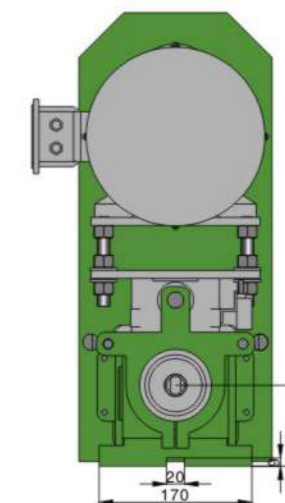
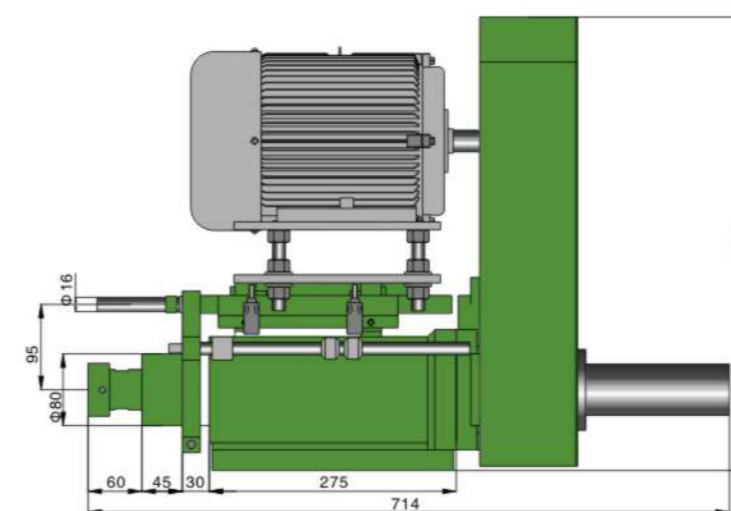
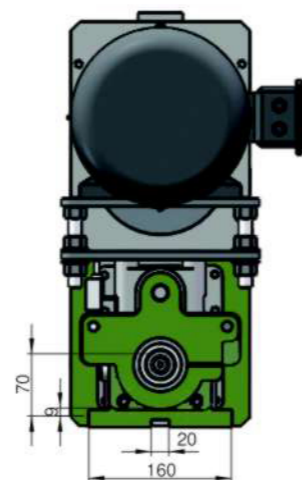
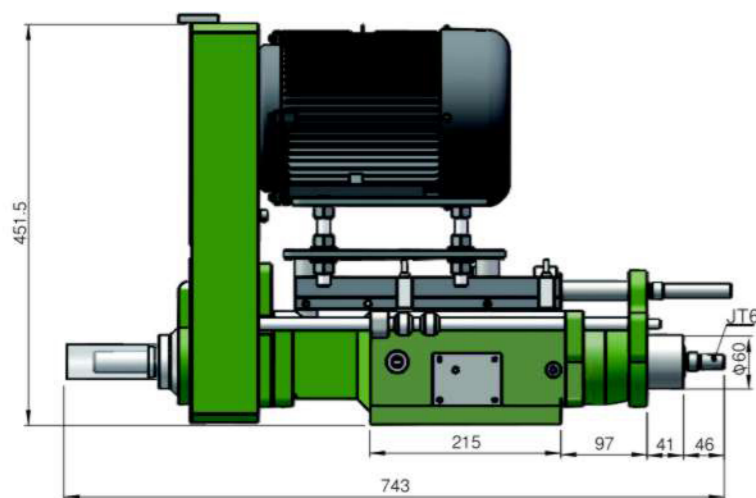
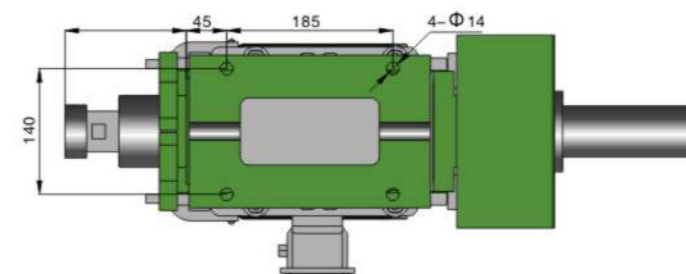
| 規格    | Model                   | N6-65                       |
|-------|-------------------------|-----------------------------|
| 攻牙能力  | Drilling Capacity(S45C) | M12                         |
| 最大行程  | Max.Stroke              | 65mm                        |
| 螺旋導程  | Thread Guide Pitch      | 0.4-2mm                     |
| 馬力    | Horsepower,3 Phase      | 1HP,220V/380V               |
| 傳動皮帶  | Transmission Belt       | 8M × 35T × 25W              |
| 總重    | Net Weight              | 40kg                        |
| 主軸軸承  | Spindle Bearing         | 6004ZZ × 3                  |
| 皮帶輪軸承 | Pulley Bearing          | 6007ZZ × 3                  |
| 主軸油封  | Spindle Seal            | TC27 × 42 × 6,TC50 × 60 × 8 |
| 主軸錐度  | Spindle Taper           | ER20/JT6                    |



**BHN6攻牙動力頭**  
BHN6 Tapping Head

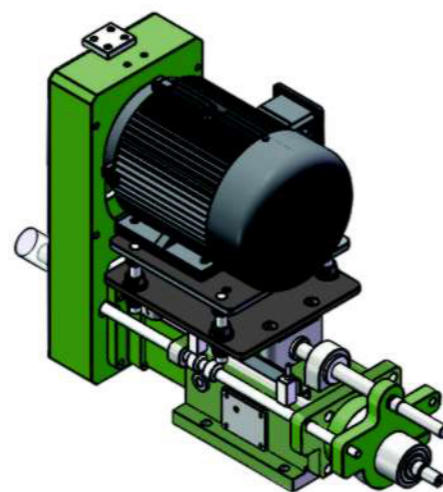


**N7攻牙動力頭**  
N7 Tapping Head



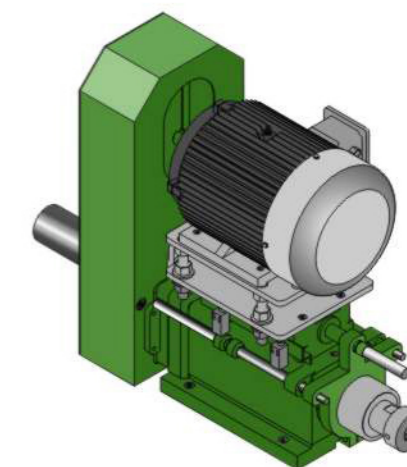
**BHN6-65攻牙動力頭** BHN6-65 Tapping Head

| 規格    | Model                   | BHN6-65                                       |
|-------|-------------------------|---|
| 攻牙能力  | Drilling Capacity(S45C) | M16   |
| 最大行程  | Max.Stroke              | 65mm  |
| 螺旋導程  | Thread Guide Pitch      | 0.4-2mm                                       |
| 馬力    | Horsepower,3 Phase      | 2HP,220V/380V                                 |
| 傳動皮帶  | Transmission Belt       | A2 × φ 100,8M × 40T × 40W                     |
| 總重    | Net Weight              | 70kg  |
| 主軸軸承  | Spindle Bearing         | 6004ZZ × 1,32004 6005DDU × 1,6005ZZ × 1,32005 |
| 皮帶輪軸承 | Pulley Bearing          | 6207ZZ × 2                                    |
| 前蓋油封  | Front Cover Seal        | 60 × 70 × 10                                  |
| 後蓋油封  | Back Cover Seal         | 55 × 65 × 8                                   |
| 主軸錐度  | Spindle Taper           | JT6/ER20                                      |
|       |                         | Roundness: ≤ 0.003mm                          |

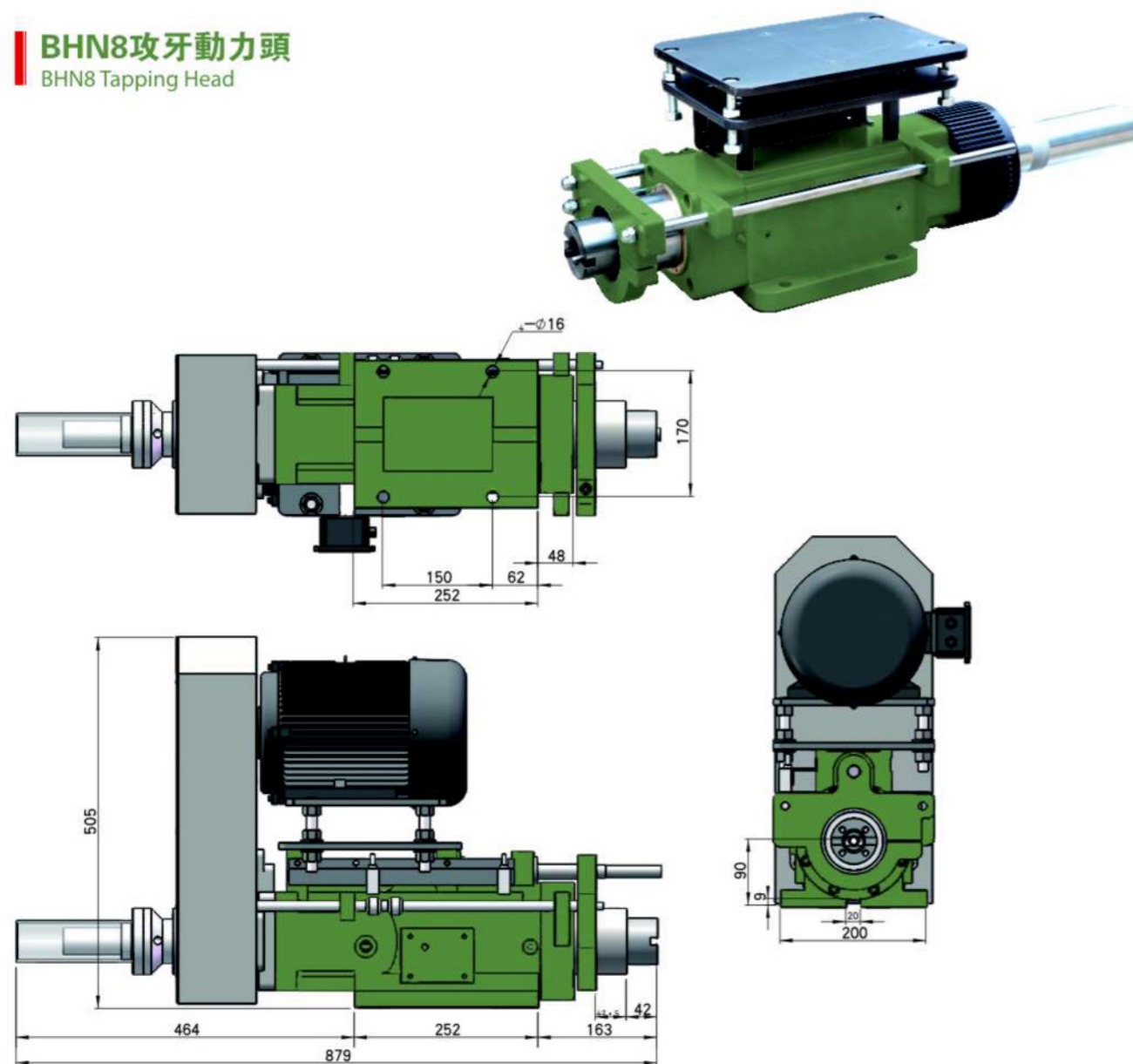


**N7-85攻牙動力頭** N7 Tapping Head

| 規格    | Model                   | N7-85             |
|-------|-------------------------|-------------------|
| 攻牙能力  | Drilling Capacity(S45C) | M30               |
| 最大行程  | Max.Stroke              | 85mm              |
| 螺旋導程  | Thread Guide Pitch      | 0.5-3mm           |
| 馬力    | Horsepower,3 Phase      | 3HP,220V/380V     |
| 傳動皮帶  | Transmission Belt       | 8M × 55T × 52W    |
| 總重    | Net Weight              | 100kg             |
| 主軸軸承  | Spindle Bearing         | 6008ZZ-3          |
| 皮帶輪軸承 | Pulley Bearing          | 6011ZZ-2/6211ZZ-1 |
| 主軸油封  | Spindle Seal            | 800 × 100 × 10    |
| 主軸錐度  | Spindle Taper           | MT3               |

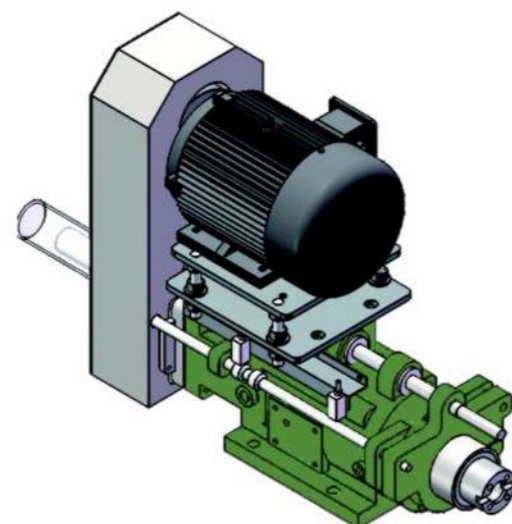


**BHN8攻牙動力頭**  
BHN8 Tapping Head

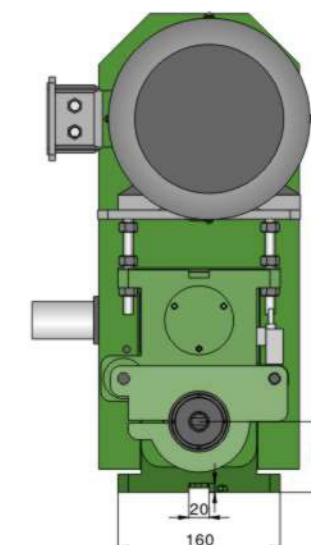
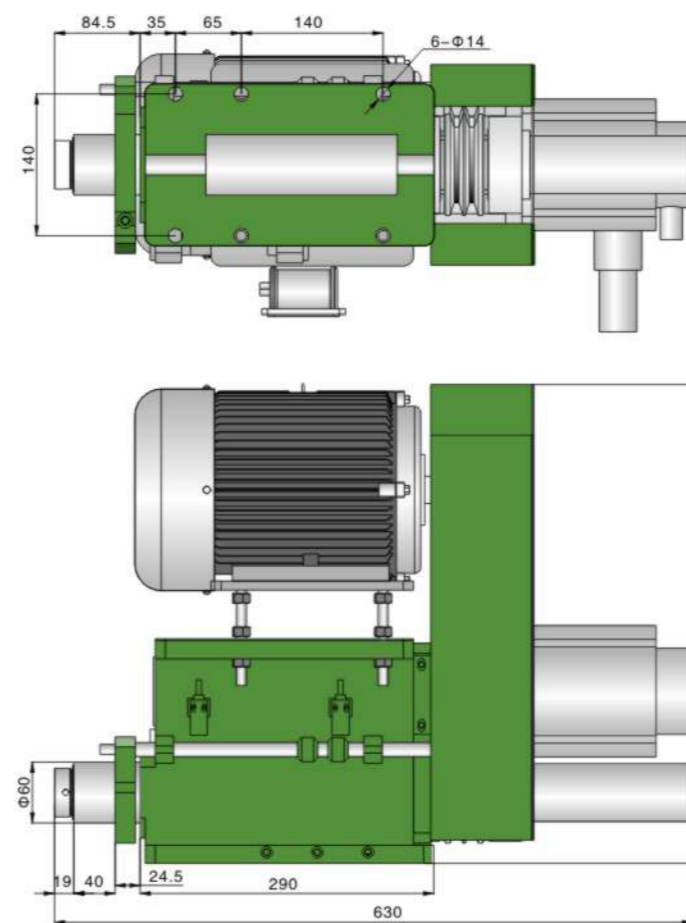


**BHN8-85攻牙動力頭 BHN8-85 TAPPING HEAD**

|       |                        |  |
|-------|------------------------|--|
| 規格    | Model                  | BHN8-85  |
| 攻牙能力  | Tapping Capacity(S45C) | M40  |
| 最大行程  | Max.Stroke             | 85mm   |
| 螺旋導程  | Thread Guide Pitch     | 0.7~2.5mm                                      |
| 馬力    | Horsepower,3 Phase     | 3HP,220V/380V                                  |
| 傳動皮帶  | Transmission Belt      | B2 × Φ140,8M × 52T × 45W                       |
| 總重    | Net Weight             | 95Kg   |
| 主軸軸承  | Spindle Bearing        | 6008ZZ × 1, 32008 6010DDU × 1,6010ZZ × 1,32010 |
| 皮帶輪軸承 | Pulley Bearing         | 6011ZZ × 2                                     |
| 前蓋油封  | Front Cover Seal       | 90 × 110 × 8                                   |
| 後蓋油封  | Back Cover Seal        | 80 × 100 × 10                                  |
| 主軸錐度  |                        | MT4  |
|       |                        | Roundness: ≤0.003mm                            |

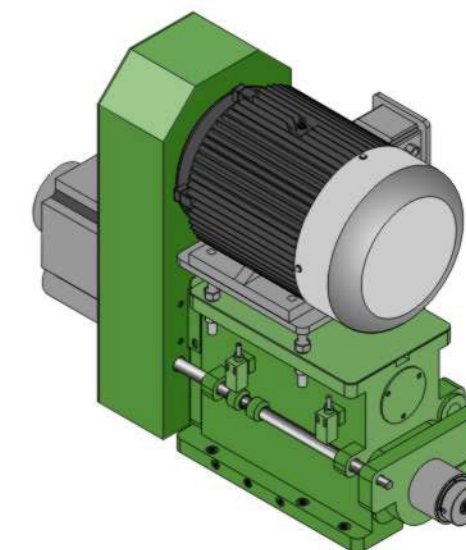


**NC-BHD6伺服動力頭**  
NC-BHD6 Servo Power Head

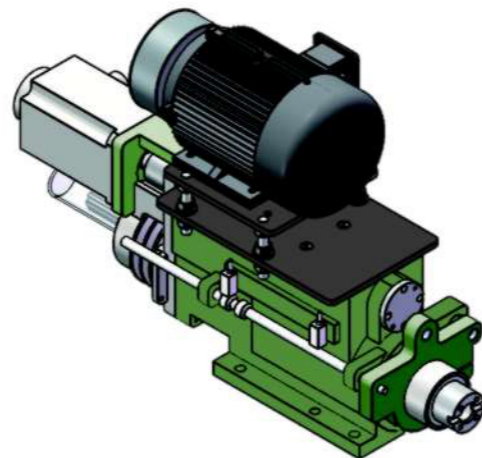
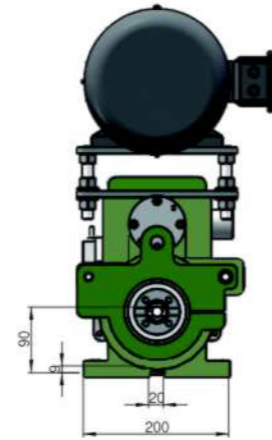
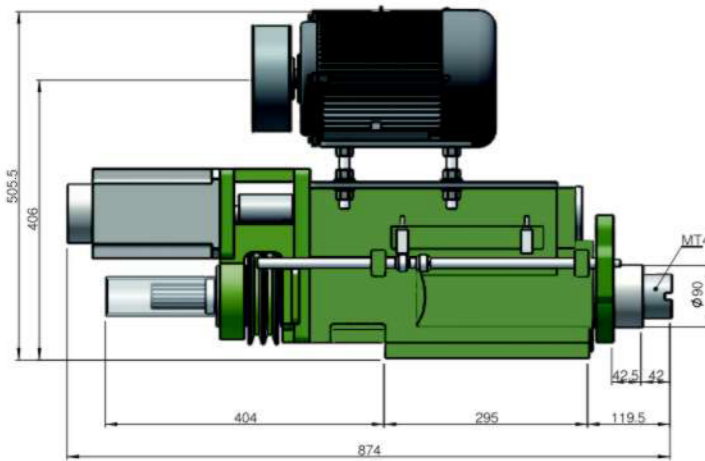
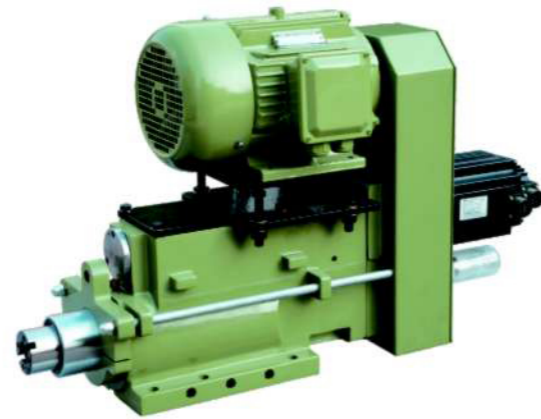
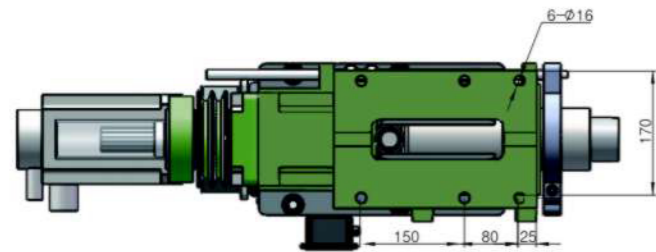


**NC-BHD6伺服動力頭 NC-BHD6 Servo Power Head**

|        |                         |                          |              |
|--------|-------------------------|--------------------------|--------------|
| 規格     | Model                   | NC-BHD6-100              | NC-BHD6-100H |
| 鑽孔能力   | Drilling Capacity(S45C) | Φ16mm                    |              |
| 最大行程   | Max.Stroke              | 100mm                    |              |
| 最高轉速   | Max.RPM                 | 2000RPM                  | 5000RPM      |
| 馬力     | Horsepower,3 Phase      | 2HP × 4,220V/380V        |              |
| 傳動皮帶   | Transmission Belt       | A2 × Φ100,8M × 52T × 40W |              |
| 總重     | Net Weight              | 80kg                     |              |
| 主軸軸承   | Spindle Bearing         | 6004ZZ × 1,32004 × 1     | 7005 × 3     |
|        |                         | 6005DDU × 1,32005 × 1    | 7004 × 2     |
| 皮帶輪軸承  | Pulley Bearing          | 6207ZZ × 2               |              |
| 滾珠絲杆軸承 | Ballscrew Bearing       | 6204ZZ × 1,7204 × 2      |              |
| 主軸油封   | Spindle Seal            | 60 × 70 × 10             |              |
| 主軸錐度   | Spindle Taper           | MT2                      |              |



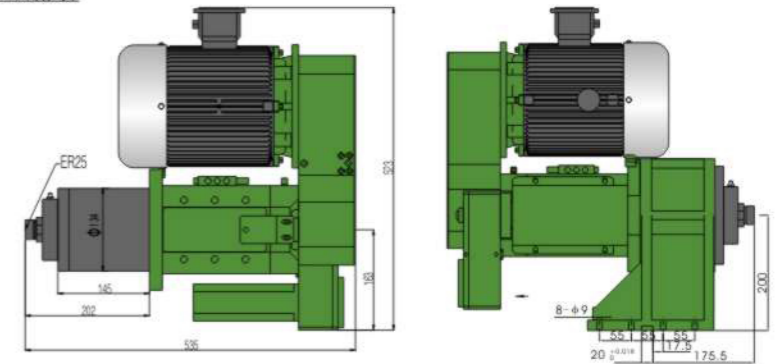
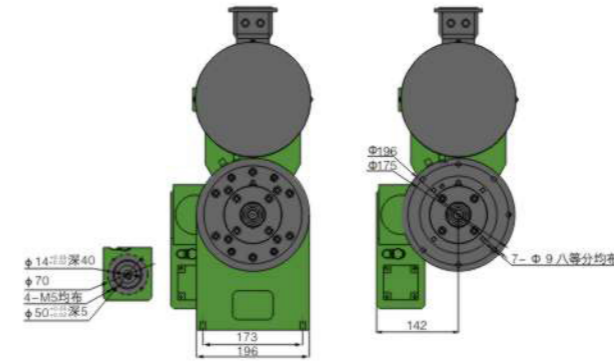
## NC-BHD8伺服動力頭 NC-BHD8 Servo Power Head



## NC-BHD8-150 伺服鑽孔、攻牙動力頭 NC-BHD8-150 Drilling/Tapping Spindle Head-Servo Type

| 規格       | Model                   | NC-BHD8-150                                   |
|----------|-------------------------|---|
| 鑽孔(攻牙)能力 | Drilling Capacity(S45C) | Φ 35mm(M30)                                   |
| 最大行程     | Max.Stroke              | 150mm   |
| 最高轉速     | Max.RPM                 | 1500RPM                                       |
| 馬力       | Horsepower,3 Phase      | 3HP × 6,220V/380V                             |
| 傳動皮帶     | Transmission Belt       | B2 × Φ 140.8M × 52T × 40W                     |
| 總重       | Net Weight              | 110kg   |
| 主軸軸承     | Spindle Bearing         | 6008ZZ × 1,32008 6010DDU × 1,6010ZZ × 1,32010 |
| 皮帶輪軸承    | Pulley Bearing          | 6011ZZ × 2                                    |
| 滾珠絲杆軸承   | Ball screw Bearing      | 6205A × 3,6205ZZ × 2                          |
| 主軸油封     | Spindle Seal            | 90 × 110 × 8                                  |
| 主軸錐度     | Spindle Taper           | MT4   |

## NC16伺服動力主軸外形尺寸圖 NC16 Servo Power Spindle Size Specification



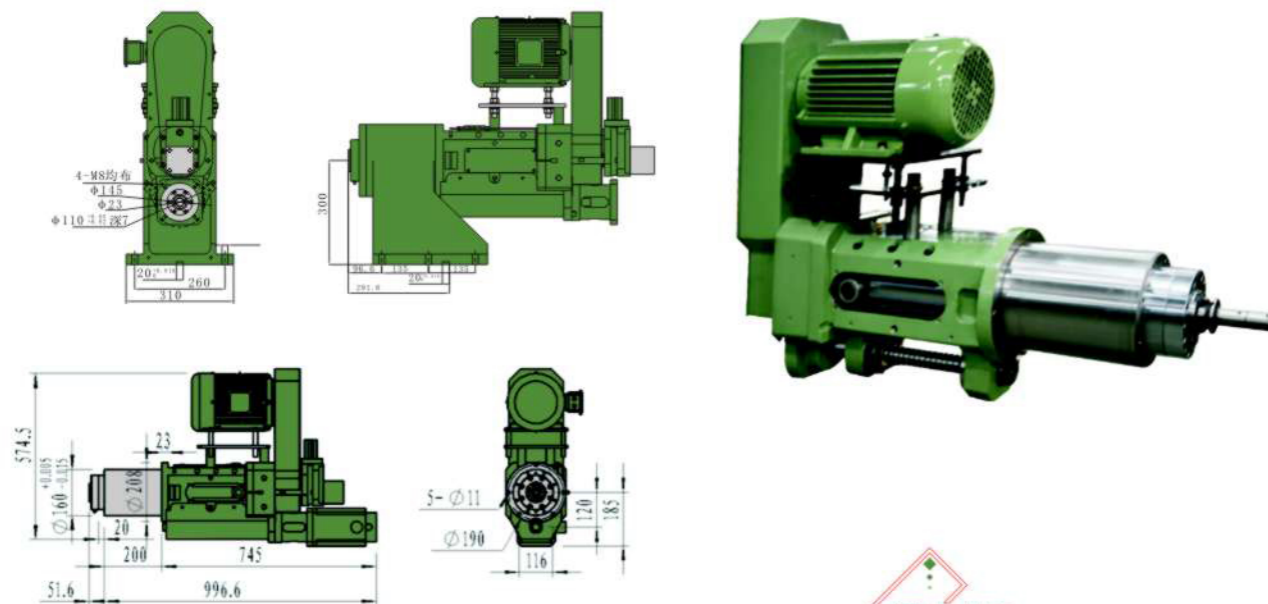
伺服動力主軸頭  
本產品榮獲5項發明專利/12項實用新型專利

## NC16伺服動力主軸頭配置選型表

| 產品編碼: NC16-ER/法蘭-001至005 |  |                                 |                                 |                                    |                                    |                                |
|--------------------------|--|---------------------------------|---------------------------------|------------------------------------|------------------------------------|--------------------------------|
| 序號                       | 配置內容   | 001標準配置                         | 002標準配置                         | 003標準配置                            | 004標準配置                            | 005標準配置                        |
| Serial number            | Configuration content  | 001 standard configuration      | 002 standard configuration      | 003 standard configuration         | 004 standard configuration         | 005 standard configuration     |
| 1                        | 主軸頭顏色蘋果綠<br>The spindle head in apple green  | ●                               | ●                               | ●                                  | ●                                  | ●                              |
| 2                        | 主軸電機為伺服電機1.8KW<br>參照主軸轉速與伺服電機轉速對照表<br>Spindle motor with AC servo motor,1.8KW<br>Motor specifics can see reference table in P. | ●                               | ●                               | ×                                  | ×                                  | Customer offer                 |
| 3                        | 1.1KW主軸電機一般交流電機<br>Spindle motor with AC induction motor,1.1KW.  | ×                               | ×                               | 參照一般交流電機轉速配置對照表(可指定轉速)             | ×                                  | Customer offer                 |
| 4                        | 0.4KW主軸進給驅動伺服電機<br>Feed motor with AC servo motor,0.4KW  | ●                               | ●                               | ●                                  | ●                                  | Customer offer                 |
| 5                        | 主軸進給快速移位速度<br>Maximum feed speed   | 24m/min                         | 24m/min                         | 24m/min                            | 24m/min                            | m/min                          |
| 6                        | 主軸外徑、主軸型式法蘭式ER25<br>Spindle Diameter, Spindle ER25   | φ100mm                          | φ100mm                          | φ100mm                             | φ100mm                             | φ100mm                         |
| 7                        | 主軸行程<br>Spindle travel   | 100mm                           | 100mm                           | 100mm                              | 100mm                              | 100mm                          |
| 8                        | 主軸軸承(日本NSK為主)<br>Spindle bearings (Japan NSK)  | Front:7008P4×2<br>Back:7007P4×2 | Front:7008P5×2<br>Back:7007P5×2 | Front:6008×2<br>Back:6007×2        | Front:6008×2<br>Back:6007×2        | customize                      |
| 9                        | 主軸重復定位精度<br>Spindle positioning repeatability  | 0.02mm                          | 0.02mm                          | 0.02mm                             | 0.02mm                             | customize                      |
| 10                       | 主軸原點光電近接開關1個<br>Machine Origin with a photoelectric proximity switch   | ●                               | ●                               | ●                                  | ●                                  | ●                              |
| 11                       | 主軸轉速最高RPM/每分鐘<br>Spindle Maximum Speed (R.P.M.)  | 5000參照主軸轉速與<br>伺服電機轉速對照表        | 3500參照主軸轉速與<br>伺服電機轉速對照表        | 2500(可指定轉速)<br>參照一般交流電機轉<br>速配置對照表 | 2500(可指定轉速)<br>參照一般交流電機轉<br>速配置對照表 | (可指定轉速)參照<br>一般交流電機轉<br>速配置對照表 |
| 12                       | 潤滑油給油管路系統<br>Lubrication system  | ●                               | ●                               | ●                                  | ●                                  | ●                              |
| 13                       | 軸承給油脂管路、油嘴<br>Oil pipeline for bearing   | ●                               | ●                               | ●                                  | ●                                  | ●                              |
| 14                       | 5M齒輪皮帶輪、軸承6009×2<br>5M timing pulley, pulley bearing 6009ZZ×2  | 25 teeth                        | 25 teeth                        | 25 teeth                           | 25 teeth                           | 25 teeth                       |
| 15                       | 三方向可轉向皮帶輪罩<br>3-direction rotatable belt cover   | ×                               | ●                               | ●                                  | ●                                  | ●                              |
| 16                       | 滾珠絲杆φ25×10節距<br>Ball screw size φ40mm,pitch:10mm   | ●                               | ●                               | ●                                  | ●                                  | ●                              |
| 17                       | 滾珠絲杆軸承前後7204×2、6204×1<br>Ball screw bearing: Front:7204×2 Back:6204×1  | ●                               | ●                               | ●                                  | ●                                  | ●                              |
| 18                       | 可配多軸器<br>Can insert multi-axis head  | ×                               | ●                               | ●                                  | ●                                  | customize                      |
| 19                       | 主軸精度<br>Roundness  | 0.003mm                         | 0.005mm                         | 0.01mm                             | 0.01mm                             | 0.01mm                         |

## NC25伺服動力主軸外形尺寸圖

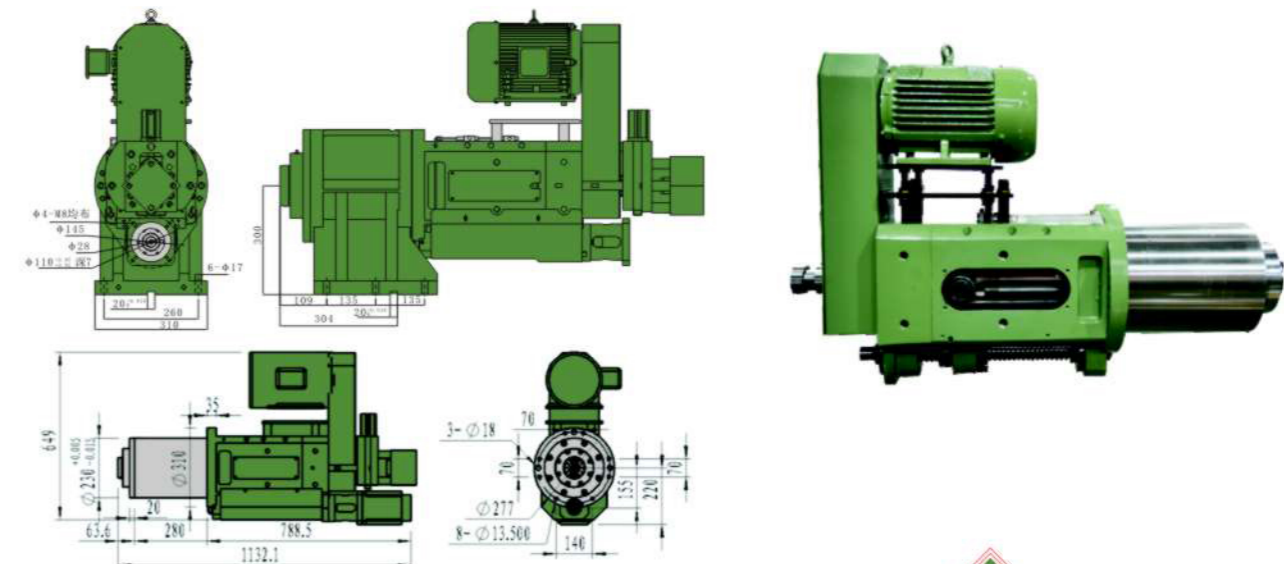
NC25 Servo Power Spindle Size Specification



伺服動力主軸頭  
 本產品榮獲5項發明專利/12項實用新型專利

## NC35伺服動力主軸外形尺寸圖

NC35 Servo Power Spindle Size Specification



伺服動力主軸頭  
 本產品榮獲5項發明專利/12項實用新型專利

### NC25伺服動力主軸頭配置選型表

產品編碼: NC25-BT30-001至005 (001-002為鉗攻兩用型) ●標配 ×不生產

| 序號<br>Serial number | 配置內容<br>Configuration content   | 001標準配置<br>001 standard configuration | 002標準配置<br>002 standard configuration | 003標準配置<br>003 standard configuration | 004標準配置<br>004 standard configuration | 005標準配置<br>005 standard configuration |
|---------------------|---|---------------------------------------|---------------------------------------|---------------------------------------|---------------------------------------|---------------------------------------|
| 1                   | 主軸頭顏色蘋果綠<br>The spindle head in apple green   | ●                                     | ●                                     | ●                                     | ●                                     | customize                             |
| 2                   | 主軸電機為伺服電機2.9KW<br>參照主軸轉速與伺服電機轉速對照表<br>Spindle motor with AC servo motor,<br>2.9KW Motor specifics can see reference table in P... | ●                                     | ●                                     | ×                                     | ×                                     | Customer offer                        |
| 3                   | 2.2-1.5KW主軸電機一般交流電機<br>Spindle motor with AC induction motor,2.2KW-1.5KW.   | ×                                     | ×                                     | 參照一般交流電機<br>轉速配置對照表                   | 參照一般交流電機轉<br>速配置對照表                   | Customer offer                        |
| 4                   | 0.85KW主軸進給驅動伺服電機<br>Feed motor with AC servo motor,0.85KW   | ●                                     | ●                                     | ●                                     | ●                                     | Customer offer                        |
| 5                   | 主軸進給快速移位速度<br>Maximum feed speed  | 24m/min                               | 24m/min                               | 24m/min                               | 24m/min                               | 24m/min                               |
| 6                   | 主軸外徑、主軸型式BT30<br>Spindle Diameter, Spindle BT30   | φ120mm                                | φ120mm                                | φ120mm                                | φ120mm                                | φ120mm                                |
| 7                   | 主軸外徑、主軸型式BT50<br>Spindle Diameter, Spindle BT50   | Front: 7011P4 × 3<br>Back:7010P4 × 2  | Front: 7011P5 × 3<br>Back:7010P5 × 2  | Front: 7011P5 × 3<br>Back:6010 × 2    | Front:6011 × 3<br>Back:6010 × 2       | customize                             |
| 8                   | 主軸重複定位精度<br>Spindle positioning repeatability   | 0.02mm                                | 0.02mm                                | 0.02mm                                | 0.02mm                                | customize                             |
| 9                   | 主軸行程<br>Spindle travel  | 150mm                                 | 150mm                                 | 150mm                                 | 150mm                                 | 150mm                                 |
| 10                  | 主軸原點光電近接開關1個<br>Machine Origin with a photoelectric proximity switch  | ●                                     | ●                                     | ●                                     | ●                                     | ●                                     |
| 11                  | 主軸轉速最高RPM/每分鐘<br>Spindle Maximum Speed (RPM)  | 4500參照主軸轉<br>速與伺服電機轉<br>速對照表          | 3500參照主軸轉<br>速與伺服電機轉<br>速對照表          | 2500(可指定轉速)<br>參照一般交流電機轉<br>速配置對照表    | 2000(可指定轉速)<br>參照一般交流電機轉<br>速配置對照表    | (可指定轉速)參照<br>一般交流電機轉速配<br>置對照表        |
| 12                  | 潤滑油給油管路系統<br>Lubrication system   | ●                                     | ●                                     | ●                                     | ●                                     | ●                                     |
| 13                  | 軸承給油脂管路、油嘴<br>Oil pipeline for bearing  | ●                                     | ●                                     | ●                                     | ●                                     | ●                                     |
| 14                  | 8YU齒輪皮帶輪、軸承6011 × 2<br>8YU timing pulley, pulley bearing 6011Z2-2   | 40 teeth                              | 40 teeth                              | 40 teeth                              | 40 teeth                              | 40 teeth                              |
| 15                  | 三方向可轉向皮帶輪罩<br>3-direction rotatable belt cover  | ●                                     | ●                                     | ●                                     | ●                                     | ●                                     |
| 16                  | 滾珠絲杆φ32 × 10節距<br>Ball screw size φ32mm,pitch:10mm  | ●                                     | ●                                     | ●                                     | ●                                     | ●                                     |
| 17                  | 滾珠絲杆軸承7205前2個后2個<br>Ball screw bearing: Front:7205-2 Back:7205-2  | ●                                     | ●                                     | ●                                     | ●                                     | ●                                     |
| 18                  | 可配多軸器<br>Can insert multi-axis head   | ×                                     | ×                                     | ●                                     | ●                                     | customize                             |
| 19                  | 手動油壓打刀、拉刀功能<br>Hydraulic manual tool changing   | customer select                       | customer select                       | customer select                       | ×                                     | customer select                       |
| 20                  | 主軸精度<br>Roundness   | 0.003mm                               | 0.005mm                               | 0.008mm                               | 0.01mm                                | customer select                       |

### NC35伺服動力主軸頭配置選型表

產品編碼: NC35-BT40-001至005 (001-002為鉗攻兩用型) ●標配 ×不生產

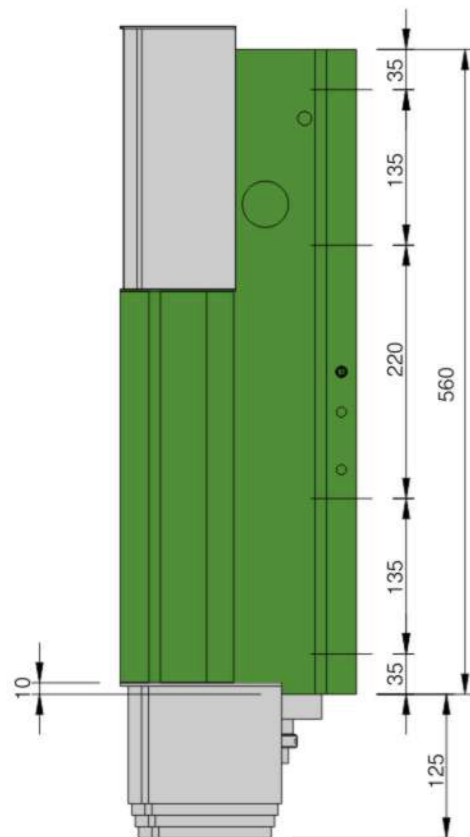
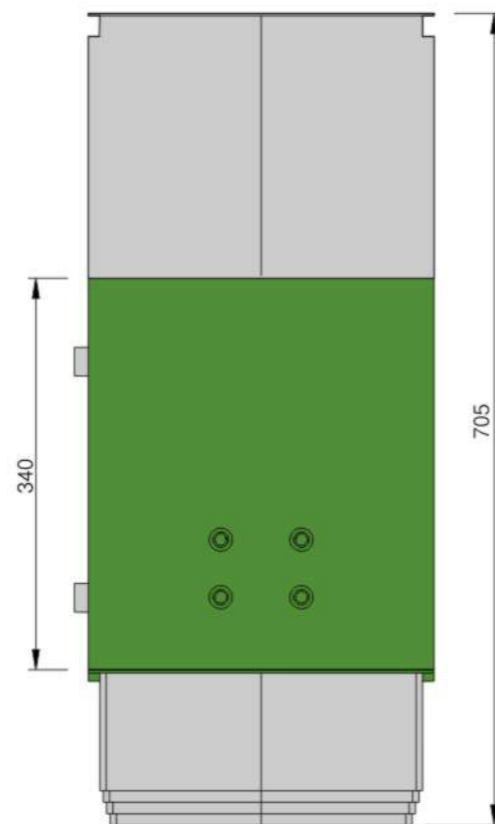
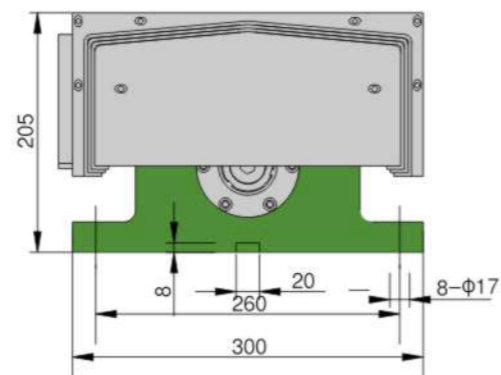
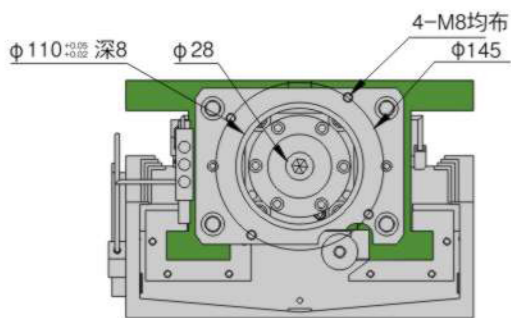
| 序號<br>Serial number | 配置內容<br>Configuration content   | 001標準配置<br>001 standard configuration | 002標準配置<br>002 standard configuration | 003標準配置<br>003 standard configuration | 004標準配置<br>004 standard configuration | 005標準配置<br>005 standard configuration |
|---------------------|---|---------------------------------------|---------------------------------------|---------------------------------------|---------------------------------------|---------------------------------------|
| 1                   | 主軸頭顏色蘋果綠<br>The spindle head in apple green   | ●                                     | ●                                     | ●                                     | ●                                     | customize                             |
| 2                   | 主軸電機為伺服電機4.4KW<br>參照主軸轉速與伺服電機轉速對照表<br>Spindle motor with AC servo motor,<br>4.4KW Motor specifics can see reference table in P... | ●                                     | ●                                     | ×                                     | ×                                     | Customer offer                        |
| 3                   | 2.2-3.0KW主軸電機一般交流電機<br>Spindle motor with AC induction motor,2.2KW-3.0KW.   | ×                                     | ×                                     | 參照一般交流電機<br>轉速配置對照表                   | 參照一般交流電機<br>轉速配置對照表                   | Customer offer                        |
| 4                   | 1.8KW主軸進給驅動伺服電機<br>Feed motor with AC servo motor,1.8KW   | ●                                     | ●                                     | ●                                     | ●                                     | Customer offer                        |
| 5                   | 主軸進給快速移位速度<br>Maximum feed speed  | 24m/min                               | 24m/min                               | 24m/min                               | 24m/min                               | 24m/min                               |
| 6                   | 主軸外徑、主軸型式BT40<br>Spindle Diameter, Spindle BT40   | φ150mm                                | φ150mm                                | φ150mm                                | φ150mm                                | φ150mm                                |
| 7                   | 主軸軸承(日本NSK為主)<br>Spindle bearings (Japan NSK)   | Front: 7014P4 × 3<br>Back:7013P4 × 2  | Front: 7014P5 × 3<br>Back:7013P5 × 2  | Front:7014P5 × 3<br>Back:6013 × 2     | Front:6014 × 3<br>Back:6013 × 2       | Customer select                       |
| 8                   | 主軸重複定位精度<br>Spindle positioning repeatability   | 0.02mm                                | 0.02mm                                | 0.02mm                                | 0.02mm                                | customize                             |
| 9                   | 主軸行程<br>Spindle travel  | 180mm                                 | 180mm                                 | 180mm                                 | 180mm                                 | 180mm                                 |
| 10                  | 主軸原點光電近接開關1個<br>Machine Origin with a photoelectric proximity switch  | ●                                     | ●                                     | ●                                     | ●                                     | ●                                     |
| 11                  | 主軸轉速最高RPM/每分鐘<br>Spindle Maximum Speed (RPM)  | 4500參照主軸轉<br>速與伺服電機轉<br>速對照表          | 3500參照主軸轉<br>速與伺服電機轉<br>速對照表          | 2500(可指定轉速)<br>參照一般交流電機<br>轉速配置對照表    | 2000(可指定轉速)<br>參照一般交流電機<br>轉速配置對照表    | (可指定轉速)參照一<br>般交流電機轉速配<br>置對照表        |
| 12                  | 潤滑油給油管路系統<br>Lubrication system   | ●                                     | ●                                     | ●                                     | ●                                     | ●                                     |
| 13                  | 軸承給油脂管路、油嘴<br>Oil pipeline for bearing  | ●                                     | ●                                     | ●                                     | ●                                     | ●                                     |
| 14                  | 8YU齒輪皮帶輪、軸承6216 × 2<br>8YU timing pulley, pulley bearing 6216Z2-2   | 55 teeth                              | 55 teeth                              | 55 teeth                              | 55 teeth                              | 55 teeth                              |
| 15                  | 三方向可轉向皮帶輪罩<br>3-direction rotatable belt cover  | ●                                     | ●                                     | ●                                     | ●                                     | ●                                     |
| 16                  | 滾珠絲杆φ40 × 10節距<br>Ball screw size φ40mm,pitch:10mm  | ●                                     | ●                                     | ●                                     | ●                                     | ●                                     |
| 17                  | 滾珠絲杆軸承7206 × 3前7206 × 2后<br>Ball screw bearing: Front:7206-3 Back:7206-2  | ●                                     | ●                                     | ●                                     | ●                                     | ●                                     |
| 18                  | 可配多軸器<br>Can insert multi-axis head   | ×                                     | ×                                     | ●                                     | ●                                     | customize                             |
| 19                  | 手動油壓打刀、拉刀功能BT40<br>Hydraulic manual tool changingBT40   | customer select                       | customer select                       | customer select                       | ×                                     | customer select                       |
| 20                  | 主軸精度<br>Roundness   | 0.003mm                               | 0.005mm                               | 0.008mm                               | 0.01mm                                | customer select                       |

## (伺服/油壓)硬軌滑臺

The (Servo/Hydraulic) Slide With Hardened Way

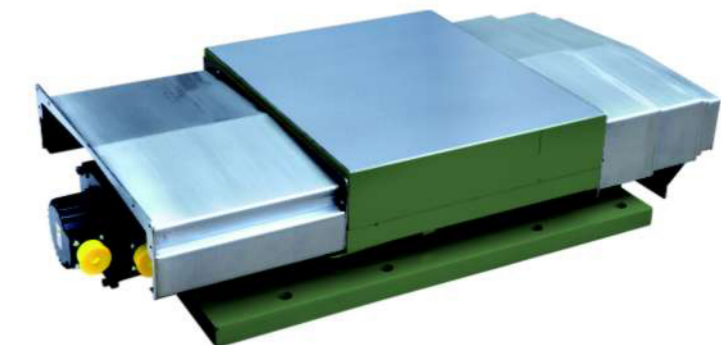


| 驅動方式<br>Drive type | 型號<br>model number | 行程<br>travel | 軌道<br>Rail type    |
|--------------------|--------------------|--------------|--------------------|
| 伺服<br>Servo        | NCBH300-L200       | 200          | 硬軌<br>hardened way |
| 油壓<br>Hydraulic    | BH300-L200         | 200          | 硬軌<br>hardened way |

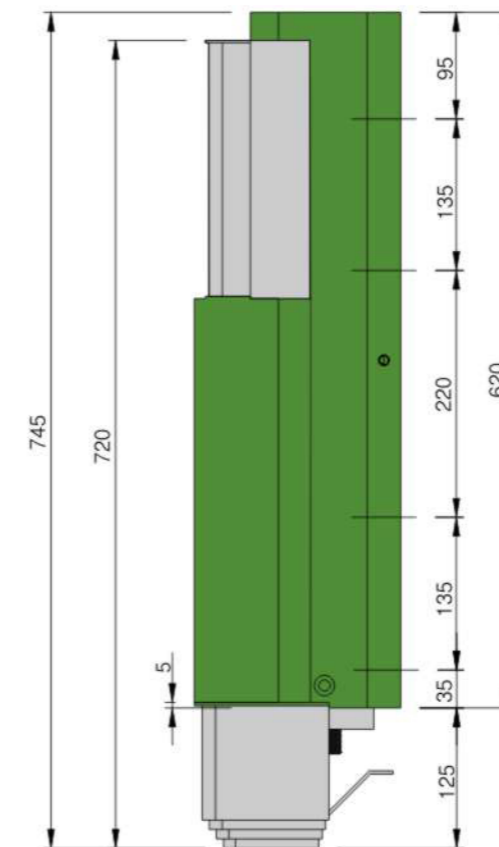
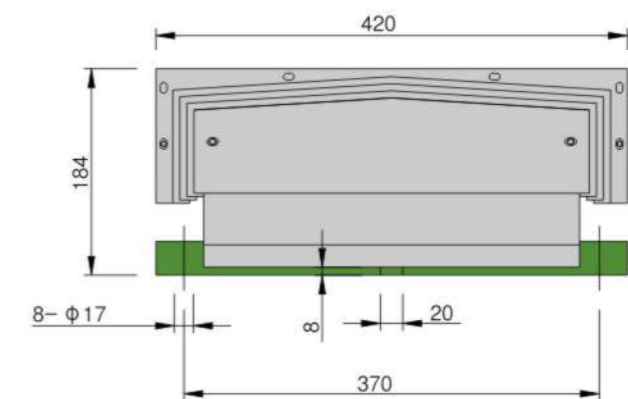
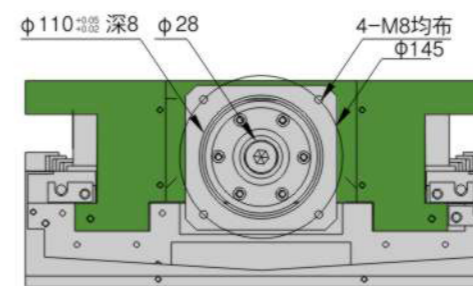


## 伺服硬軌滑臺

The Servo Slide With Hardened Way



| 驅動方式<br>Drive type | 型號<br>model number | 行程<br>travel |
|--------------------|--------------------|--------------|
| 伺服<br>Servo        | NCBH420-L180       | 180          |



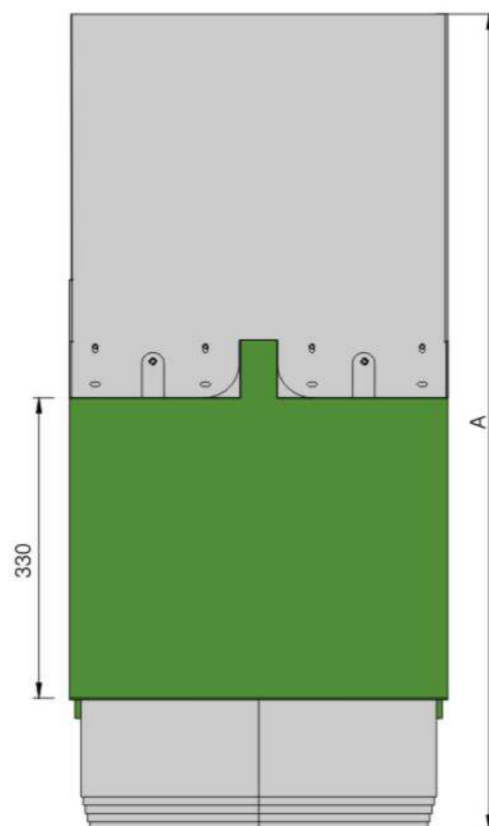
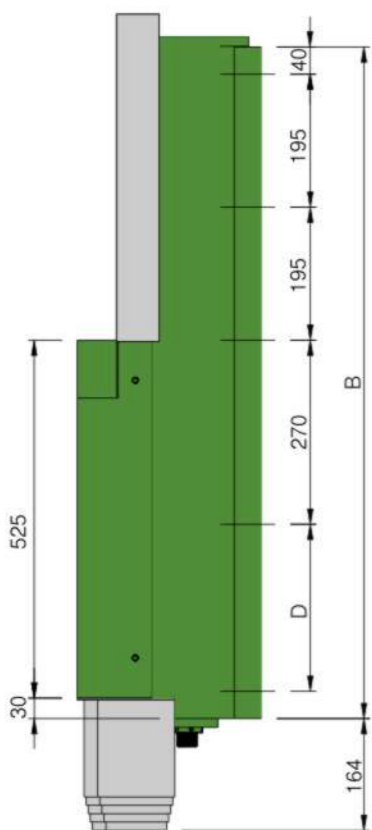
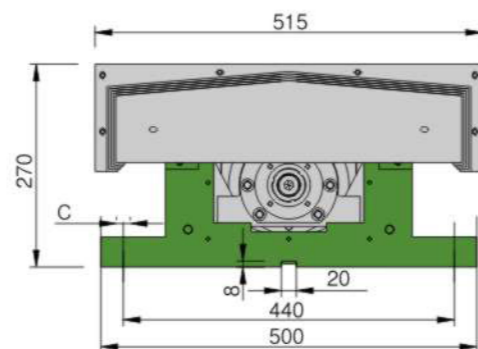
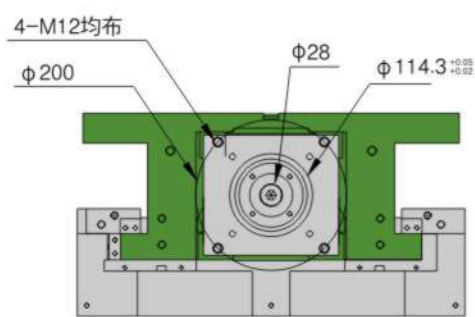


## 伺服硬軌滑臺

The Servo Slide With Hardened Way (With Turcite)

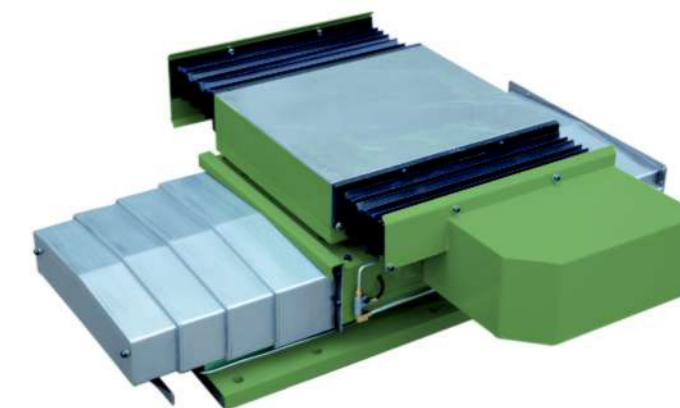


| 驅動方式<br>Drive type | 型號<br>model number | A    | B   | C      | D   | E    | 行程<br>travel |
|--------------------|--------------------|------|-----|--------|-----|------|--------------|
| 伺服<br>Servo        | NCBH500-L200       | 957  | 783 | 8-φ18  | -   | 1128 | 200          |
| 伺服<br>Servo        | NCBH500-L400       | 1197 | 985 | 10-φ18 | 245 | 1397 | 400          |

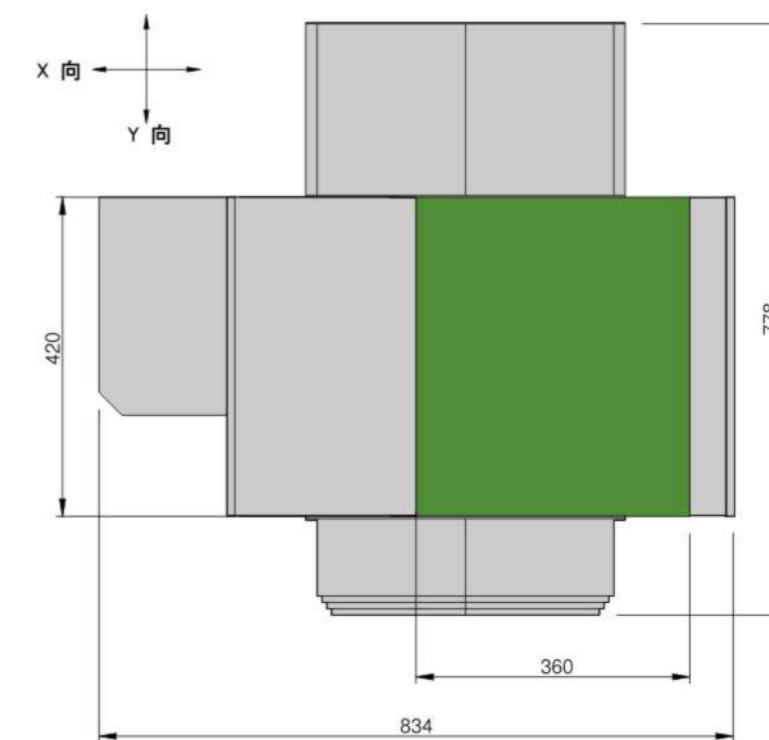
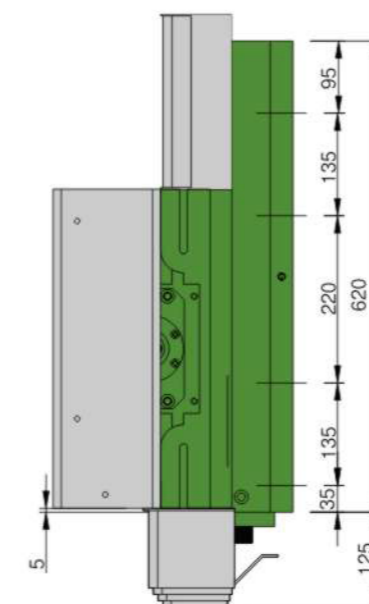
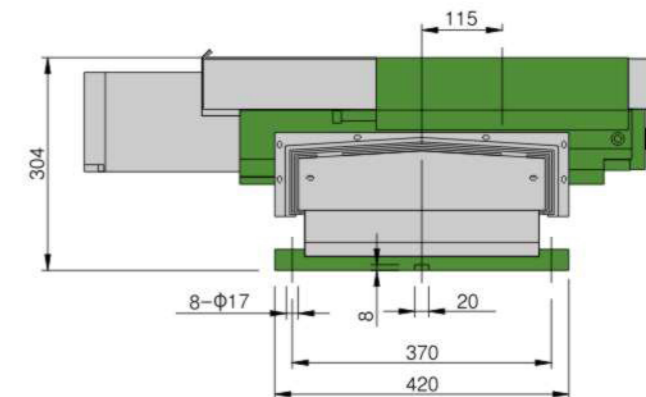
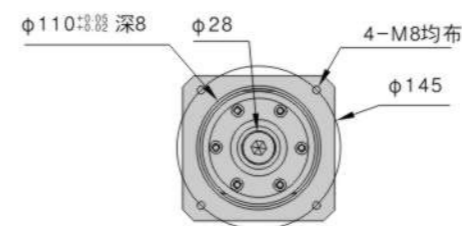


## 伺服硬軌十字滑臺

The Servo Cross Slide With Hardened Way



| 驅動方式<br>Drive type | 型號<br>model number  | X行程<br>X travel | Y行程<br>Y travel |
|--------------------|---------------------|-----------------|-----------------|
| 伺服<br>Servo        | NCBH420-XL180-YL180 | 180             | 180             |
| 伺服<br>Servo        | NCBH420-XL120-YL180 | 120             | 180             |



# 滑臺系列

Slipway series

<http://www.wxnjjd.com>

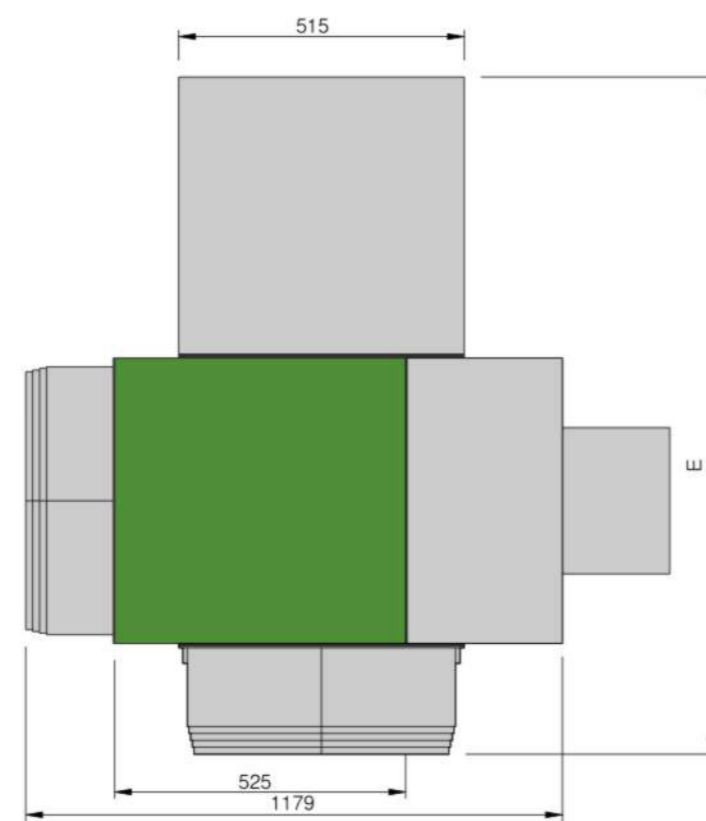
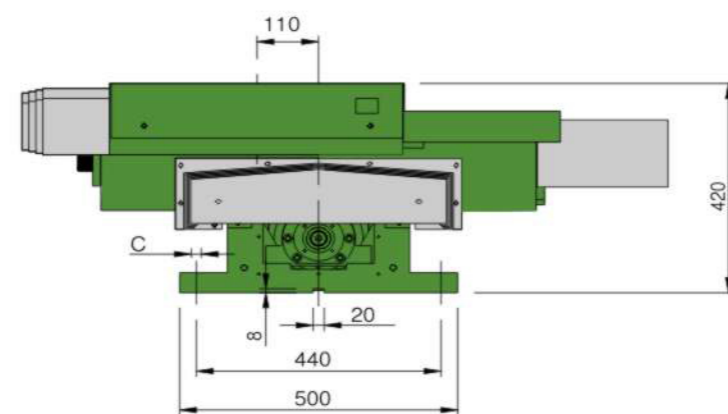
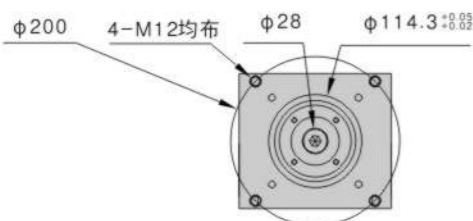


## 伺服硬軌十字滑臺

The Servo Cross Slide With Hardened Way



| 驅動方式<br>Drive type | 型號<br>model number  | A    | B   | C      | D   | E    | X行程<br>X travel | Y行程<br>Y travel |
|--------------------|---------------------|------|-----|--------|-----|------|-----------------|-----------------|
| 伺服<br>Servo        | NCBH500-XL200-YL200 | 1128 | 783 | 8-φ18  | -   | 956  | 200             | 200             |
| 伺服<br>Servo        | NCBH500-XL200-YL400 | 1397 | 985 | 10-φ18 | 245 | 1197 | 200             | 400             |

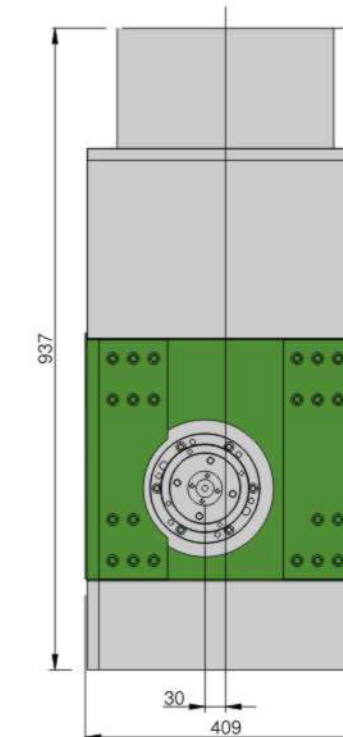
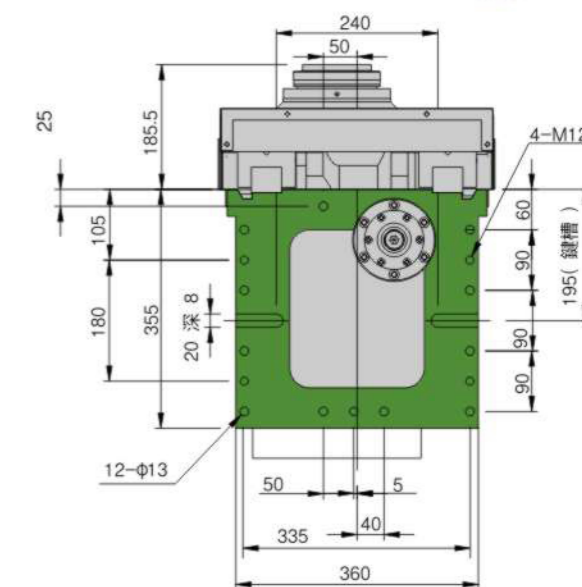
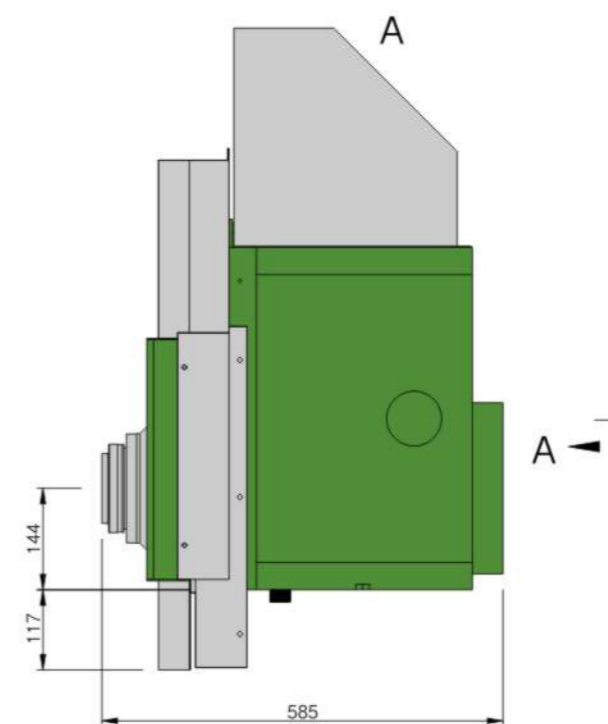
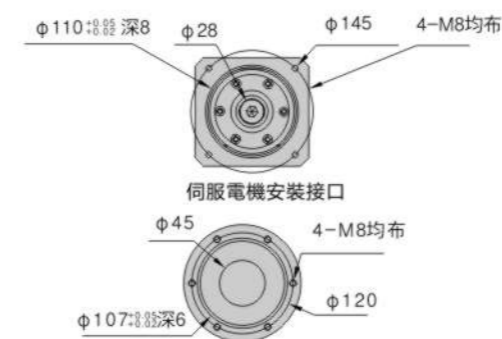


## 立式伺服綫軌臥式鏜銑主軸頭滑臺

Vertical Servo Linear Slide With Horizontal Boring Spindle Head



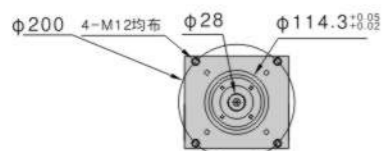
| 驅動方式<br>Drive type | 型號<br>model number | 行程<br>travel | 主軸最高轉速<br>Spindle Maximum Speed |
|--------------------|--------------------|--------------|---------------------------------|
| 伺服<br>Servo        | NCBH420-SR60-L140  | 140          | 3000                            |
| 伺服<br>Servo        | NCBH420-BT40-L140  | 140          | 6000                            |



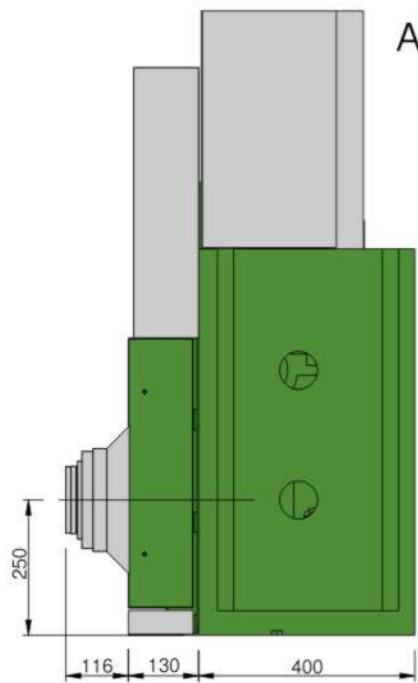
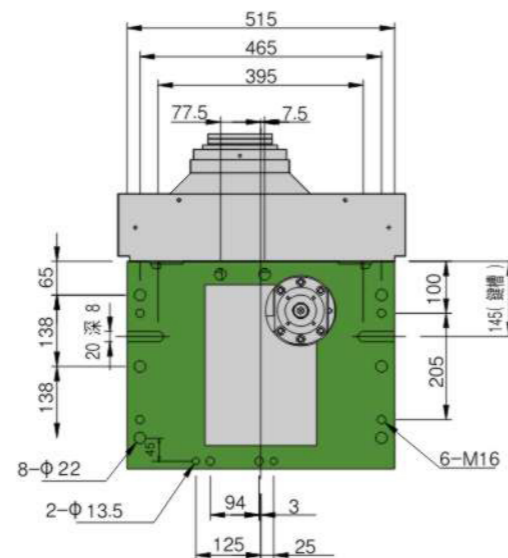
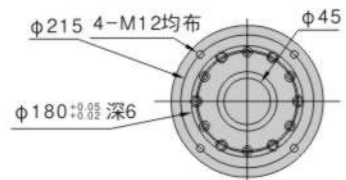
### 立式伺服綫軌臥式鏜銑主軸頭滑臺

Vertical Servo Linear Slide With Horizontal Boring Spindle Head

| 驅動方式<br>Drive type | 型號<br>model number | 行程<br>travel | 主軸最高轉速<br>Spindle Maximum Speed |
|--------------------|--------------------|--------------|---------------------------------|
| 伺服<br>Servo        | NCBH500-SR80-L200  | 200          | 1500                            |

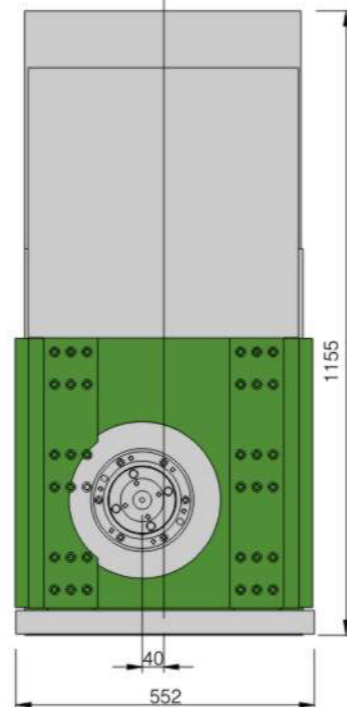


伺服電機安裝接口



A

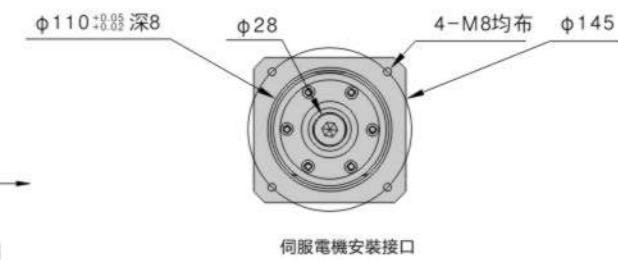
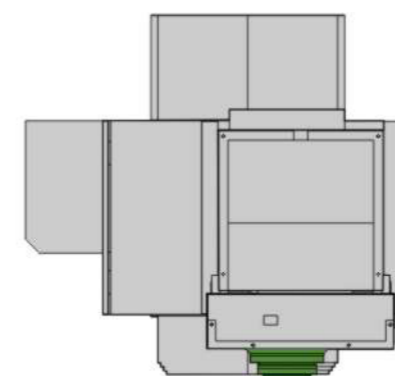
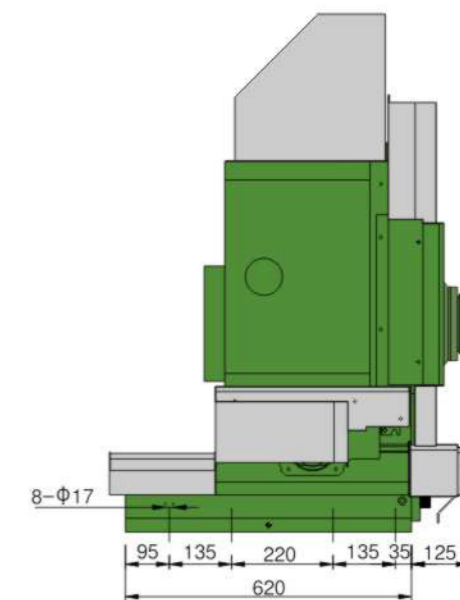
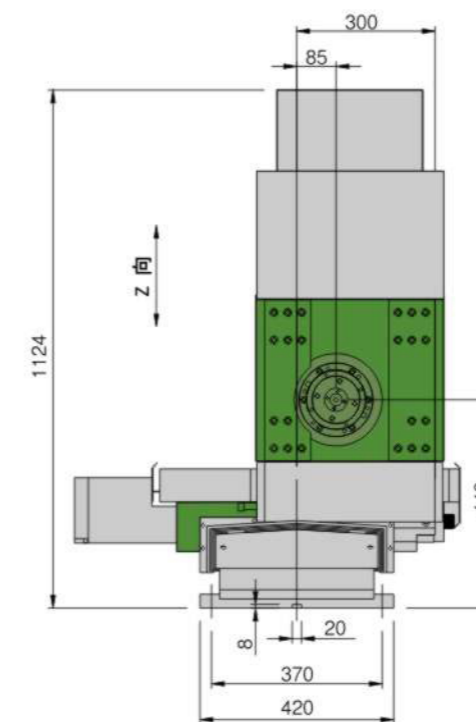
A ←



### 臥式三軸伺服鏜銑主軸頭滑臺

3-Axis Simultaneous Motion Servo Slide With Horizontal Boring Spindle Head

| 驅動方式<br>Drive type | 型號<br>model number       | X行程<br>X travel | Y行程<br>Y travel | Z行程<br>Z travel | 主軸最高轉速<br>Spindle Maximum Speed |
|--------------------|--------------------------|-----------------|-----------------|-----------------|---------------------------------|
| 伺服<br>Servo        | NCBH420-SR60-XL180-YL180 | 180             | 180             | 140             | 3000                            |
| 伺服<br>Servo        | NCBH420-BT40-XL180-YL180 | 180             | 180             | 140             | 6000                            |
| 伺服<br>Servo        | NCBH420-SR60-XL120-YL180 | 120             | 180             | 140             | 3000                            |
| 伺服<br>Servo        | NCBH420-BT40-XL120-YL180 | 120             | 180             | 140             | 6000                            |



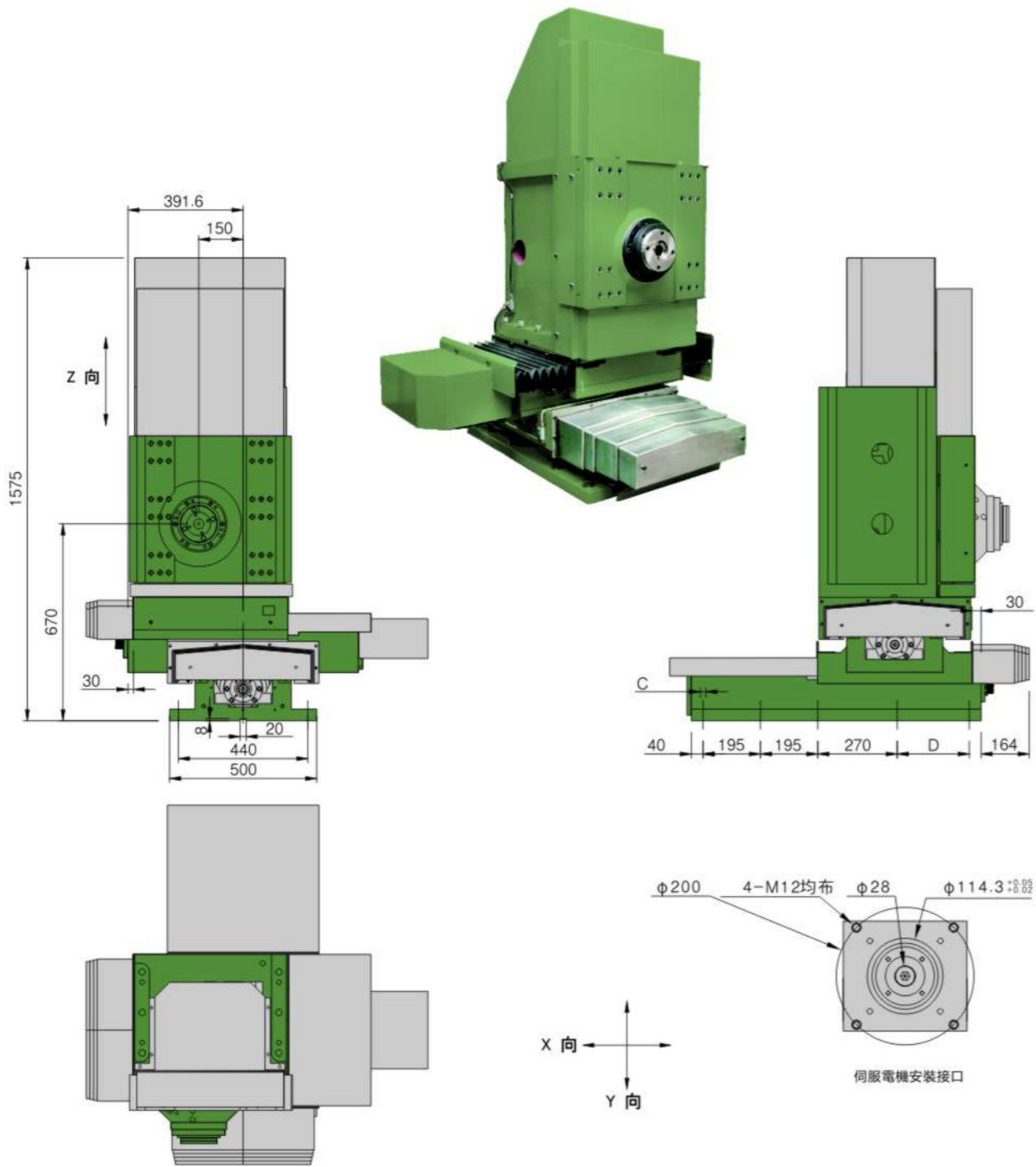
伺服電機安裝接口

# 滑臺系列

Slipway series

## 卧式三軸伺服鏜銑主軸頭滑臺

3-Axis Simultaneous Motion Servo Slide With Horizontal Boring Spindle Head



| 驅動方式<br>Drive type | 型號<br>model number       | B   | C      | D   | X行程<br>X travel | Y行程<br>Y travel | Z行程<br>Z travel | 主軸最高轉速<br>Spindle Maximum Speed |
|--------------------|--------------------------|-----|--------|-----|-----------------|-----------------|-----------------|---------------------------------|
| 伺服<br>Servo        | NCBH500-SR80-XL200-YL200 | 783 | 8-φ18  | -   | 200             | 200             | 200             | 1500                            |
| 伺服<br>Servo        | NCBH500-SR80-XL200-YL400 | 985 | 10-φ18 | 245 | 200             | 400             | 200             | 1500                            |

# 主軸頭系列

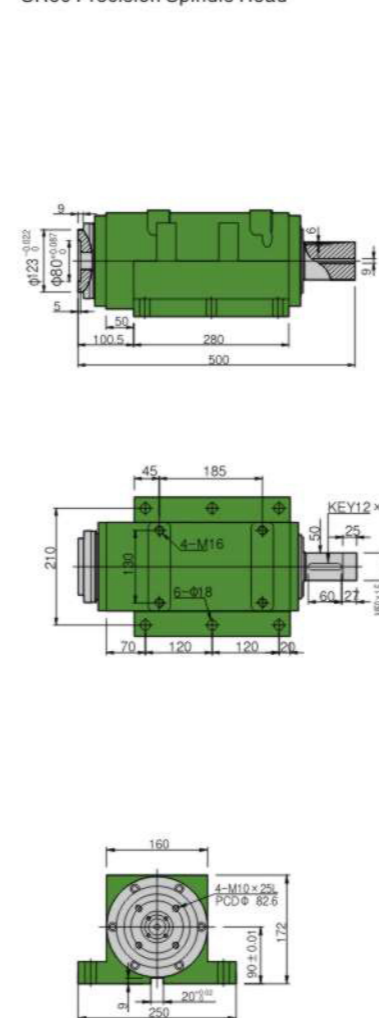
Spindle Head series



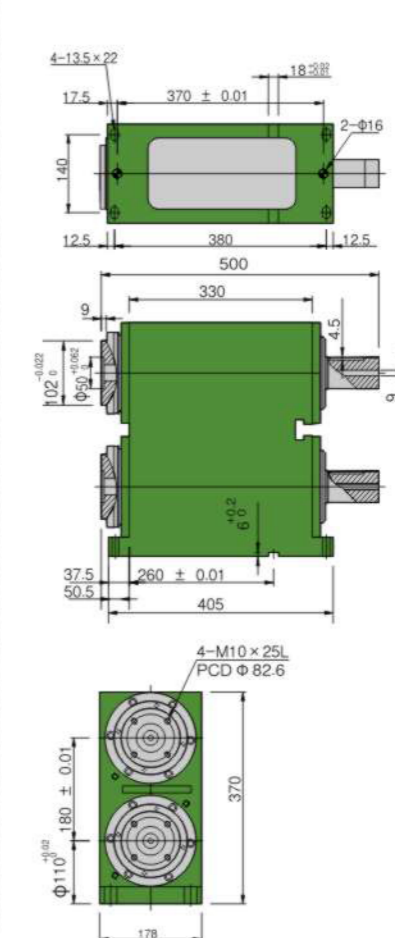
## SR60精密主軸頭

SR60 Precision Spindle Head

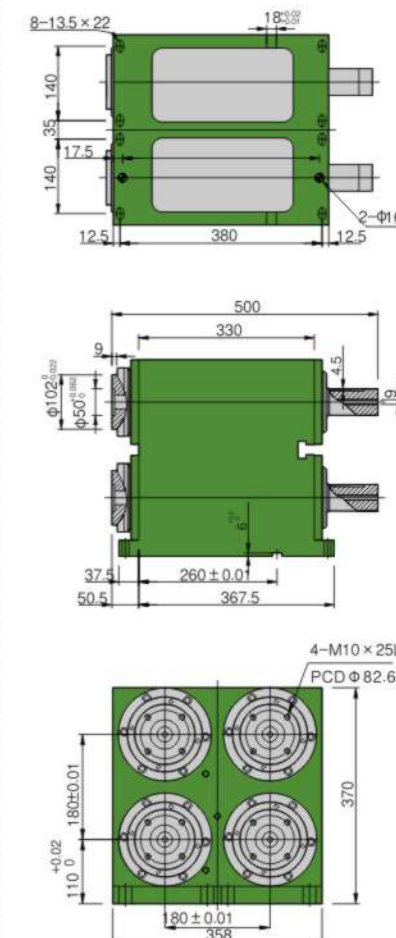
SR60精密主軸頭  
SR60 Precision Spindle Head



SR60-2T2S 雙層兩軸精密主軸頭  
SR60-2T2S Double-decker Two Axis Precision Spindle Head



SR60-2T4S 雙層四軸精密主軸頭  
SR60-2T4S Double-decker Four Axis Precision Spindle Head



| 精度保證<br>Precision                       | 潤滑方式<br>The types of lubrication Grease | 最大馬力<br>Maximum Power  | 固定螺栓<br>Fixing screws |                          |
|---|---|------------------------|-----------------------|--------------------------|
| 主軸端面之偏轉 0.005mm<br>End run out ±0.005mm | 黃油潤滑                                    | 3.7KW                  | 4-M16×60L             |                          |
| 型式<br>Type                              | 使用軸承<br>Bearing                         | 最大回轉數<br>Maximum speed | 重量<br>Weight          | 上升溫度<br>temperature rise |
| SR60-BT40                               | (NSK) 7212×2/7211×2                     | 3000R.P.M.             | 70KG                  | 20°                      |
| SR60-FB60                               | (NSK) 7212×2/7211×2                     | 3000R.P.M.             | 70KG                  | 20°                      |
| SR60-FB60-2T2S                          | (NSK) 7212×2/7211×2                     | 3000R.P.M.             | 70KG                  | 20°                      |
| SR60-FB60-2T4S                          | (NSK) 7212×2/7211×2                     | 3000R.P.M.             | 70KG                  | 20°                      |

# 主軸頭系列

Spindle Head series

<http://www.wxnjtd.com>

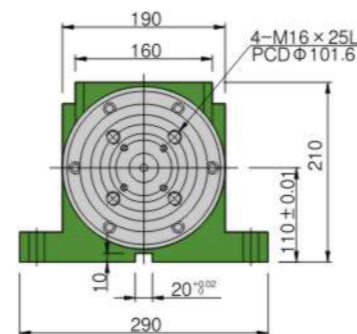
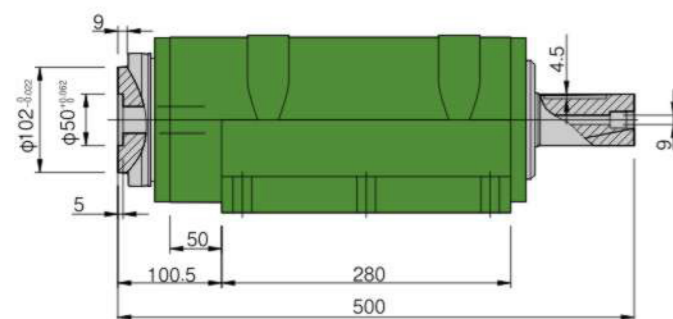
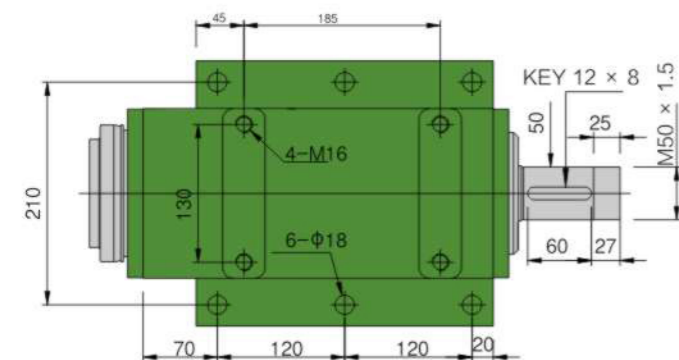


## SR80精密主軸頭

SR80 Precision Spindle Head

精密主軸頭

型號 | SR80



## SR80精密主軸頭

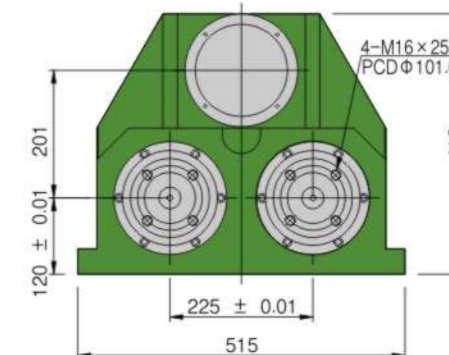
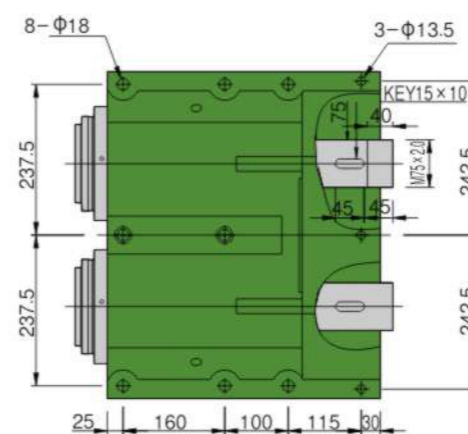
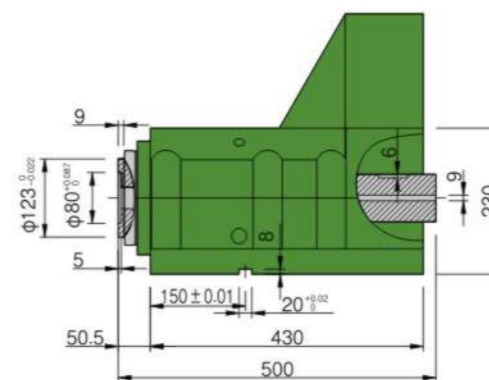
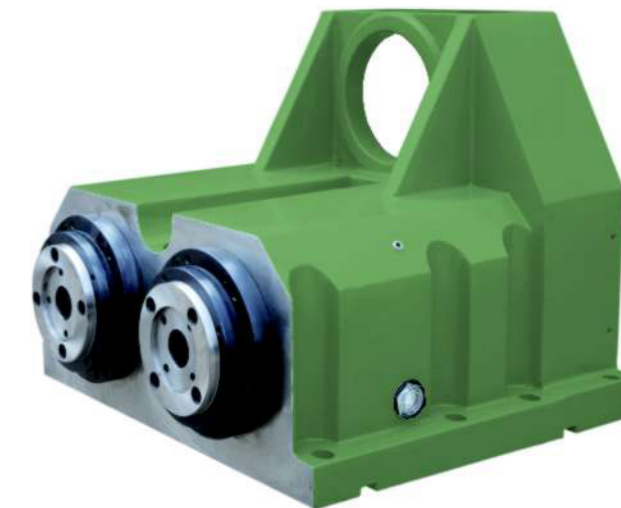
SR80 Precision Spindle Head

SR80 雙軸粗鏜主軸頭

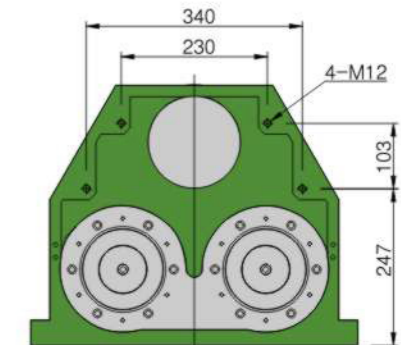
SNC80 雙軸精鏜主軸頭

型號 | SR80-2S

SNC80-2S



法蘭型



| 精度保證<br>Precision | 潤滑方式<br>The types of lubrication Grease | 最大馬力<br>Maximum Power | 固定螺栓<br>Fixing screws |
|-------------------|---|-----------------------|-----------------------|
| 主軸端面之偏轉 0.005mm   | 黃油潤滑                                    | 3.7KW                 | 4-M16 x 60L           |

| 型式<br>Type     | 使用軸承<br>Bearing     | 最大回轉數<br>Maximum speed | 重量<br>Weight | 上升溫度<br>temperature rise |
|----------------|---------------------|------------------------|--------------|--------------------------|
| SR80-BT40/BT50 | (NSK)32216×2/6216×2 | 1800rpm                | 95kg         | 20°                      |
| SR80-FB80      | (NSK)32216×2/6216×2 | 1800rpm                | 95kg         | 20°                      |
| SR80-BT40/BT50 | (NSK)7216×2/7216×2  | 3000rpm                | 95kg         | 20°                      |
| SR80-FB80      | (NSK)6216×2/6216×2  | 3000rpm                | 95kg         | 20°                      |

| 型式<br>Type   | 使用軸承<br>Bearing     | 最大回轉數<br>Maximum speed | 重量<br>Weight | 上升溫度<br>temperature rise |
|--------------|---------------------|------------------------|--------------|--------------------------|
| SR80-2S-BT40 | (NSK)32216×2/6216×2 | 1200rpm                | 290kg        | 20°                      |
| SR80-2S-FB80 | (NSK)32216×2/6216×2 | 1200rpm                | 290kg        | 20°                      |
| SR80-2S-BT40 | (NSK)7216×2/7216×2  | 3000rpm                | 290kg        | 20°                      |
| SR80-2S-FB80 | (NSK)7216×2/7216×2  | 3000rpm                | 290kg        | 20°                      |
| SNC80-2S     | (NSK)7016×5         | 6000rpm                | 360kg        | 20°                      |