

卫生级恒压调节阀 Sanitary Constant Pressure Adjust Valve

应用

SH11 恒压调节阀系列因其能在阀门出口和入口保证一个稳定的压力，所以广泛应用于分离器、热交换器、罐装系统等设备的后部，以及作为溢流阀门使用。

Application:

SH11 constant pressure regulating valve which its outlet and inlet to ensure a stable pressure, so widely used in separators, heat exchangers, the back of canned systems and other equipment, as well as the relief valve.

工作原理

SH11恒压调节阀系列均通过压缩空气进行遥控操作，该系列阀门的操作不需要依赖输送产品的管线中的任何传感器，仅需要一个用于压缩空气的压力调节装置和产品输送管路上的对压力实施监控的一个压力表。

一套隔膜/阀杆系统可以对所输送产品的任何压力变化做出迅速反应，并相对地改变阀杆位置，以便继续维持预先设定的压力值。当输送产品的压力升高时，阀门就会开启，反之，输送产品的压力降低，阀门就会关闭。

Working Principle:

SH11 constant pressure regulating valve series are remotely operated by compressed air, the series of valve operation does not depend on the pipeline transportation of products of any sensor, requiring only a compressed air pressure regulator for the devices and products pipeline on the road monitoring the implementation of a pressure gauge.

A diaphragm / stem system can transport the product of the rapid response to any pressure changes and changes in stem position relative to continue to maintain pre-set pressure value. When the delivery pressure of the product increases, the valve opens, on the contrary, transmission products, reduce the pressure, the valve is closed.



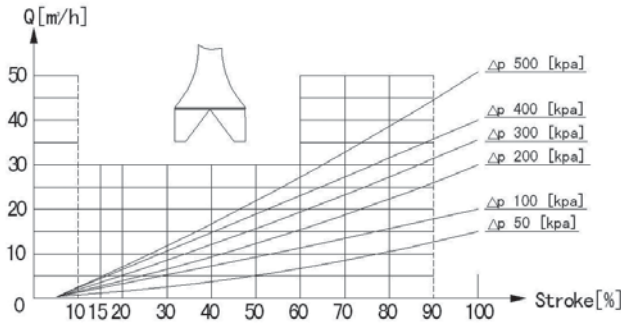
标准设计

森明现行设计SH11恒压调节阀系列均按DIN标准、3A标准和ISO标准等来设计生产。

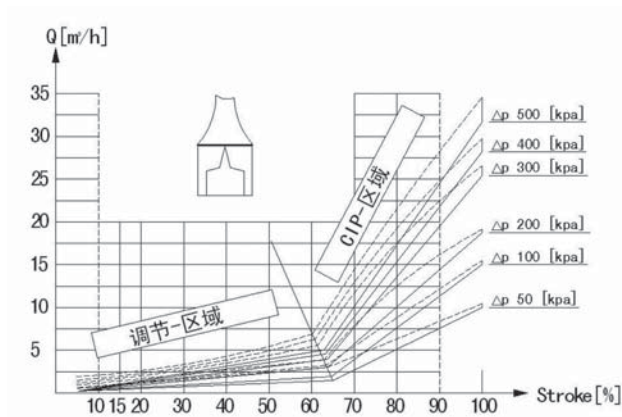
SH11恒压调节阀系列基本组成部件包括：一个带阀座的阀体、阀盖、一个带隔膜单元的阀杆以及一个卡箍。SH11恒压调节阀因入口与阀体底部成90°，残液无法积存，所以清洁作用更显著；另外特别的柱塞设计可容许较少的液体流量和较高的CIP流量。

Standard Design:

SENMING current design SH11 constant pressure regulating valve series according to DIN standards, 3A standards and ISO standards to design and manufacture. SH11 constant pressure regulating valve series of basic component parts, including: a body with a valve seat, valve cover, a stem cell with a diaphragm and a clamp. SH11 constant pressure regulating valve and the valve at the bottom for entry into the 90°, the residue can not accumulate, so clean and more significant; other special plunger design allows less liquid flow and higher CIP flow.



例：当压降 $\Delta p=200$ [kpa] 流量 $Q=8$ m³/h
选择：KV23 在工作位置将是 38% 空旷



注意!

这些曲线图示数据的测定系基于：
介质：水(水温20°C)
测量：符合VDI 2173.

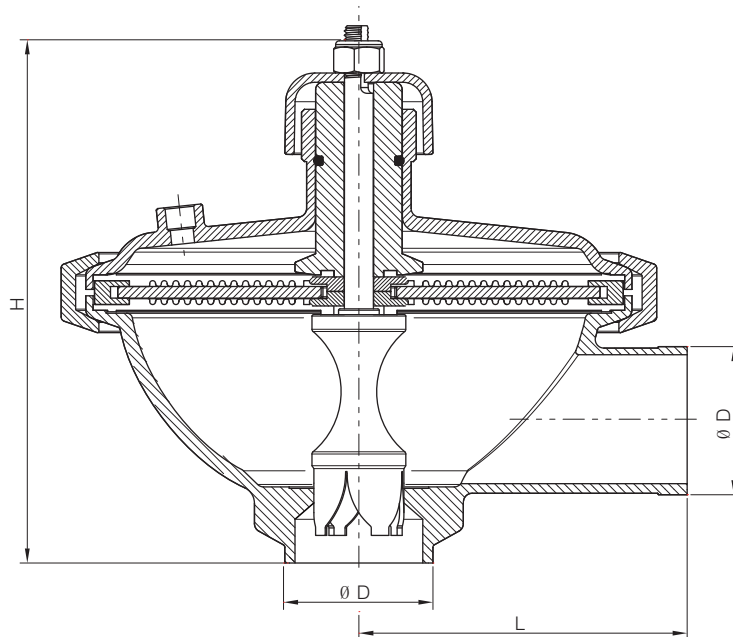
NOTE!

For the diagrams the following applies:
Medium: Water (20°C).
Measurement: In accordance with VDI 2173.

技术参数 Technical Data

金属材料 Metal material	产品受潮钢件 Product affected with damp steel	耐酸钢 316L 316L	可提供材质检测报告单
	其它钢配件 Other parts	不锈钢 304 304	
隔膜材质 Diaphragm material	上隔膜 Up diaphragm	丁腈橡胶 (NBR)	采用进口材料, 所有材质均符合 FDA117.2006 Use import material, all fit with FDA117.2006
	下隔膜 Down diaphragm	PTFE 敷层 EPDM 橡胶	
压力 Pressure	空气压力 air pressure	0kpa-800kpa(0bar-8bar)	
流量 (压力降 = 100 kpa) flow rate	大约 7m ³ /h about 7m ³ /h		
连接方式 Connected type	焊接 Welded	焊接口系列: DIN11850、DIN11851/SMS/3A/ISO 等 Welded series: DIN11850、DIN11851/SMS/3A/ISO and so on	

卫生级恒压调节阀 Sanitary Constant Pressure Adjust Valve



No.SH1001

恒压阀 Constant Pressure Valve					
Size		L	H		
DIN	ISO				
DN25 D 28.0	Ø25 D 25.4	113.0	186.0		
DN32 D 35.0	Ø32 D 31.8	113.0	186.0		
DN40 D 40.0	Ø38 D 38.1	113.0	176.0		
DN50 D 52.0	Ø51 D 50.8	113.0	176.0		