

管道连接部件

Pipe Connectors Parts



森明深知,要想开阔更广阔的市场,必须保证产品符合市场要求。所以为配合客户的需求,我们公司致力于制造更具多样性、更具灵活性和更易维修性的连接部件。

森明生产的连接部件包括:活接头系列(平接头、螺纹接头以及圆螺母)、卡箍系列(重型卡箍、高压卡箍以及三片式卡箍等)、法兰盘系列以及皮管接头系列均由棒材锻制,CNC数控精加工而成,适合于密封处压力高、要求控制容易和更换密封方便及最佳清洁度的流程应用。

森明现有 DIN、3A、SMS、ISO/IDF、BS-RJT、DS 等标准卫生级活接头、夹式接头、卡箍、法兰盘和卫生级钢管可满足客户不同的标准需求。

SENMING well knows, in order to expand a wider market, we must ensure the products to meet the market requirements. So to meet customers' needs, our company is dedicated to manufacturing more diversity, more flexible and easier to maintainability of connecting parts.

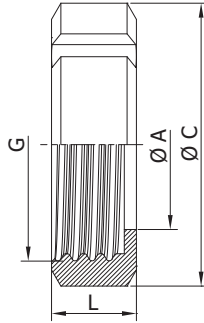
SENMING production of connecting parts including: union series (flat connector, threaded nipple and round nut), clamp series (heavy duty, high-pressure and three pieces, etc.), flanges hose pipe joints series which rod forging joint series made, CNC machining process, suitable for high seal pressure, easy control and replace the seal requirements and optimum flow of cleanness of party application.

SENMING now have these kind of standard: DIN, 3A, SMS, ISO/IDF, BS/RJT, DS etc standard sanitary union, clamp joint, clamp, flange plate. They can satisfy customers' different needs.

DIN

1.7 卫生级活接头 Sanitary Unions

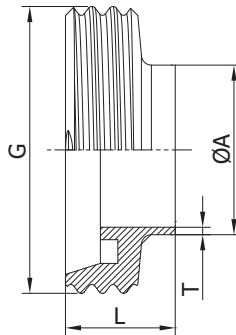
No.SM0514001



由任圆螺母
(DIN11850)
Round Nut

Size	A	C	G	L
DN10	19.0	38.0	RD28X1/8	18.0
DN15	25.0	44.0	RD34X1/8	18.0
DN20	31.0	54.0	RD44X1/6	21.0
DN25	36.0	63.0	RD52X1/6	21.0
DN32	42.0	70.0	RD58X1/6	21.0
DN40	49.0	78.0	RD65X1/6	21.0
DN50	62.0	92.0	RD78X1/6	22.0
DN65	80.0	112.0	RD95X1/6	25.0
DN80	94.0	127.0	RD110X1/4	30.0
DN100	115.0	148.0	RD130X1/4	31.0
DN125	138.0	178.0	RD160X1/4	35.0
DN150	164.0	210.0	RD190X1/4	40.0

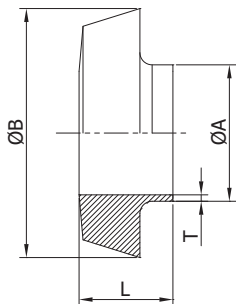
No.SM0513002



螺纹接头 (DIN11850)
Male

Size	A	G	L	T
DN10	12.0	RD28X1/8	17	1.5
DN15	18.0	RD34X1/8	17	1.5
DN20	22.0	RD44X1/6	20	1.5
DN25	28.0	RD52X1/6	22	1.5
DN32	34.0	RD58X1/6	22	1.5
DN40	40.0	RD65X1/6	22	1.5
DN50	52.0	RD78X1/6	22	1.5
DN65	70.0	RD95X1/6	24	2.0
DN80	85.0	RD110X1/4	28	2.0
DN100	104.0	RD130X1/4	28	2.0
DN125	129.0	RD160X1/4	35	2.0
DN150	154.0	RD190X1/4	40	2.0

No.SM0511003



平接头 (DIN11850)
Liner

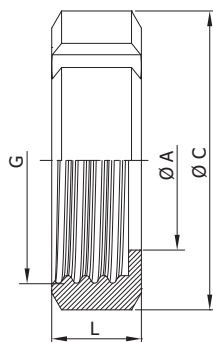
Size	A	B	L	T
DN10	12.0	22.0	13.0	1.5
DN15	18.0	28.0	13.0	1.5
DN20	22.0	36.0	15.0	1.5
DN25	28.0	44.0	17.0	1.5
DN32	34.0	50.0	17.0	1.5
DN40	40.0	56.0	17.0	1.5
DN50	52.0	68.0	18.0	1.5
DN65	70.0	86.0	20.0	2.0
DN80	85.0	100.0	20.0	2.0
DN100	104.0	121.0	24.0	2.0
DN125	129.0	150.0	28.0	2.0
DN150	154.0	176.0	32.0	2.0

DIN 1.7 卫生级活接头 Sanitary Unions

由任圆螺母 (DIN11851) Round Nut

Size	A	C	G	L
DN10	19.0	38.0	RD28X1/8	18.0
DN15	25.0	44.0	RD34X1/8	18.0
DN20	31.0	54.0	RD44X1/6	21.0
DN25	36.0	63.0	RD52X1/6	21.0
DN32	42.0	70.0	RD58X1/6	21.0
DN40	49.0	78.0	RD65X1/6	21.0
DN50	62.0	92.0	RD78X1/6	22.0
DN65	80.0	112.0	RD95X1/6	25.0
DN80	94.0	127.0	RD110X1/4	30.0
DN100	115.0	148.0	RD130X1/4	31.0
DN125	138.0	178.0	RD160X1/4	35.0
DN150	164.0	210.0	RD190X1/4	40.0

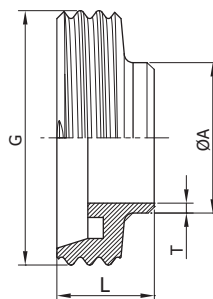
No.SM0514004



长型螺纹接头 (DIN11851) Long-type Male

Size	A	G	L	T
DN10	15.0	RD28X1/8	21.0	2.5
DN15	21.0	RD34X1/8	21.0	2.5
DN20	25.0	RD44X1/6	24.0	2.5
DN25	31.0	RD52X1/6	29.0	2.5
DN32	37.0	RD58X1/6	32.0	2.5
DN40	43.0	RD65X1/6	33.0	2.5
DN50	55.0	RD78X1/6	35.0	2.5
DN65	72.0	RD95X1/6	40.0	3.0
DN80	87.0	RD110X1/4	45.0	3.0
DN100	106.0	RD130X1/4	54.0	3.0
DN125	132.0	RD160X1/4	46.0	3.5
DN150	157.0	RD190X1/4	50.0	3.5

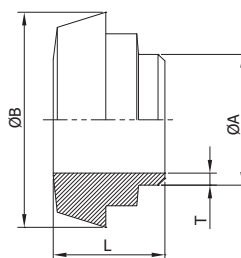
No.SM0513005



长型平接头 (DIN11851) Long-type Liner

Size	A	B	L	T
DN10	15.0	22.0	16.0	2.5
DN15	21.0	28.0	17.0	2.5
DN20	25.0	36.0	18.0	2.5
DN25	31.0	44.0	22.0	2.5
DN32	37.0	50.0	25.0	2.5
DN40	43.0	56.0	26.0	2.5
DN50	55.0	68.0	28.0	2.5
DN65	72.0	86.0	32.0	3.0
DN80	87.0	100.0	37.0	3.0
DN100	106.0	121.0	44.0	3.0
DN125	132.0	150.0	34.0	3.5
DN150	157.0	176.0	37.0	3.5

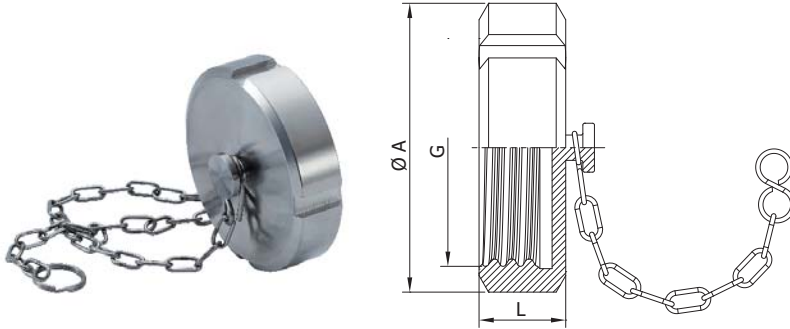
No.SM0511006



DIN

1.7 卫生级活接头 Sanitary Unions

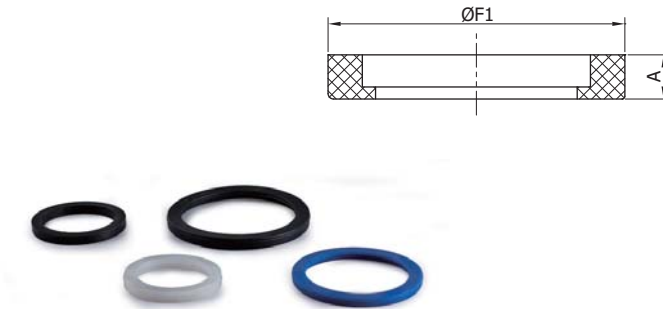
No.SM0513007



带链条盲螺母
Blind Nut With Chain

Size	A	G	L
DN10	38.0	RD28X1/8	18.0
DN15	44.0	RD34X1/8	18.0
DN20	54.0	RD44X1/6	21.0
DN25	63.0	RD52X1/6	21.0
DN32	70.0	RD58X1/6	21.0
DN40	78.0	RD65X1/6	21.0
DN50	92.0	RD78X1/6	22.0
DN65	112.0	RD95X1/6	25.0
DN80	127.0	RD110X1/4	30.0
DN100	148.0	RD130X1/4	31.0
DN125	178.0	RD160X1/4	35.0
DN150	210.0	RD190X1/4	40.0

No.SM0510008



由任垫圈
Gasket For Union

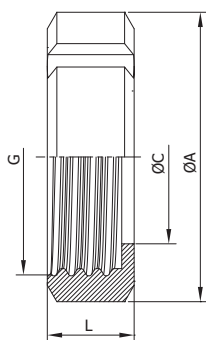
Size	A	F1
DN15	5.0	26.0
DN20	5.0	33.0
DN25	5.0	40.0
DN32	5.0	46.0
DN40	5.0	52.0
DN50	5.0	64.0
DN65	5.0	81.0
DN80	6.0	95.0
DN100	6.0	114.0
DN125	7.0	142.0
DN150	7.0	167.0

DIN 1.7 卫生级活接头 Sanitary Unions

由任 (DIN11850) 圆螺母 Round Nut

Size	A	G	C	L
DN10	38.0	RD28X1/8	19.0	18.0
DN15	44.0	RD34X1/8	25.0	18.0
DN20	54.0	RD44X1/6	31.0	21.0
DN25	63.0	RD52X1/6	36.0	21.0
DN32	70.0	RD58X1/6	42.0	21.0
DN40	78.0	RD65X1/6	49.0	21.0
DN50	92.0	RD78X1/6	62.0	22.0
DN65	112.0	RD95X1/6	80.0	25.0
DN80	127.0	RD110X1/4	94.0	30.0
DN100	148.0	RD130X1/4	115.0	31.0
DN125	178.0	RD160X1/4	138.0	35.0
DN150	210.0	RD190X1/4	164.0	40.0

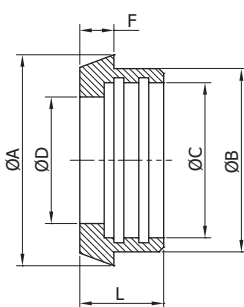
No.SM0513009



膨胀型平接头 Expanding Liner

Size	A	B	C	D	L	F
DN10	22.0	18.0	12.2	10.0	17.0	6.0
DN15	28.0	24.0	18.2	16.0	17.0	6.0
DN20	36.0	30.0	22.2	20.0	18.0	8.0
DN25	44.0	35.0	28.2	26.0	22.0	10.0
DN32	50.0	41.0	34.2	32.0	25.0	10.0
DN40	56.0	48.0	40.2	38.0	26.0	10.0
DN50	68.0	61.0	52.2	50.0	28.0	11.0
DN65	86.0	79.0	70.3	66.0	32.0	12.0
DN80	100.0	93.0	85.3	81.0	37.0	12.0
DN100	120.0	114.0	104.3	100.0	44.0	15.0
DN125	149.0	137.0	129.3	125.0	34.0	17.0
DN150	175.0	163.0	154.3	150.0	37.0	18.0

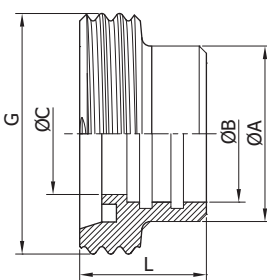
No.SM0511010



膨胀型螺纹接头 Expanded Male

Size	A	B	C	L	G
DN10	18.0	12.2	10.0	21.0	RD28X1/8
DN15	24.0	18.2	16.0	21.0	RD34X1/8
DN20	30.0	22.2	20.0	24.0	RD44X1/6
DN25	35.0	28.2	26.0	29.0	RD52X1/6
DN32	41.0	34.2	32.0	32.0	RD58X1/6
DN40	48.0	40.2	38.0	33.0	RD65X1/6
DN50	61.0	52.2	50.0	35.0	RD78X1/6
DN65	79.0	70.3	66.0	40.0	RD95X1/6
DN80	93.0	85.3	81.0	45.0	RD110X1/4
DN100	114.0	104.3	100.0	54.0	RD130X1/4
DN125	137.0	129.3	125.0	46.0	RD160X1/4
DN150	163.0	154.3	150.0	50.0	RD190X1/4

No.SM0513011

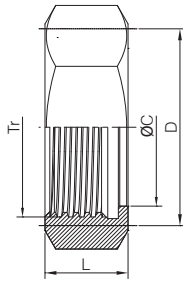


3A

1.7 卫生级活接头 Sanitary Unions



No.SM0524012

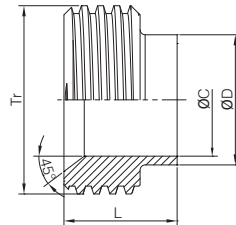


3A-13H 六角螺母
Hexagon Nut

Size	C	D	Tr	L
1"	30.3	46.0	38.02X1/8 TACME	23.0
1 1/2"	43.4	61.1	51.54X1/8 TACME	24.6
2"	56.5	76.2	65.05X1/8 TACME	27.0
2 1/2"	69.6	91.3	78.56X1/8 TACME	30.15
3"	82.7	106.4	92.08X1/8 TACME	32.5
4"	108.9	137.6	120.14X1/6TACME	38.1



No.SM0523013

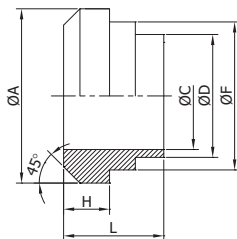


螺纹接头
Male

Size	C	D	Tr	L	
				15TRF	15A
1"	22.1	25.4	37.13X1/8 TACME	18.3	34.9
1.5"	34.8	38.1	50.65X1/8 TACME	18.3	38.1
2"	47.5	50.8	64.17X1/8 TACME	19.1	38.1
2.5"	60.2	63.5	77.67X1/8 TACME	22.2	44.5
3"	72.9	76.2	91.19X1/8 TACME	23.1	44.5
4"	97.4	101.6	119.25X1/6 TACME	26.2	44.5



No.SM0521014



平接头 14PRF/14A
Liner 14PRF/14A

Size	A	C	D	F	H	L	
						14PRF	14A
1"	33.3	22.1	25.4	29.5	7.9	18.3	34.9
1 1/2"	46.8	34.8	38.1	42.6	8.7	18.3	38.1
2"	60.3	47.5	50.8	55.7	10.3	19.1	38.1
2 1/2"	73.8	60.2	63.5	68.8	11.1	22.3	44.5
3"	87.3	72.9	76.2	81.9	11.9	23.1	44.5
4"	114.3	97.4	101.6	108.1	14.3	26.2	44.5

3A

1.7 卫生级活接头 Sanitary Unions

3A-13H 盲螺母 Blind Nut

Size	D5	Tr	L
1"	46.0	38.02X1/8 TACME	23.0
1 1/2"	61.1	51.54X1/8 TACME	24.6
2"	76.2	65.05X1/8 TACME	27.0
2 1/2"	91.3	78.56X1/8 TACME	30.15
3"	106.4	92.08X1/8 TACME	32.5
4"	137.6	120.14X1/6 TACME	38.1

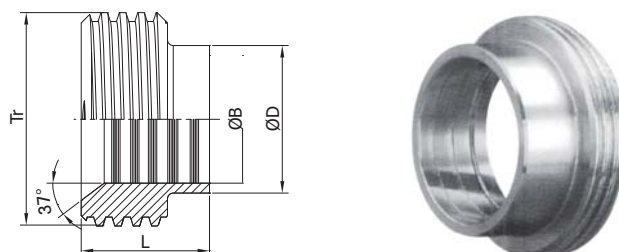
No.SM0524015



15R 扩管式外螺纹接头 Expanding Male

Size	Tr	B	D	L
1"	37.13X1/8 TACME	25.5	29.5	20.6
1.5"	50.65X1/8 TACME	38.2	42.6	28.6
2"	64.17X1/8 TACME	50.9	55.7	34.9
2.5"	77.67X1/8 TACME	63.6	68.8	38.1
3"	91.19X1/8 TACME	76.3	81.9	41.3
4"	119.25X1/6 TACME	101.7	108.1	41.3

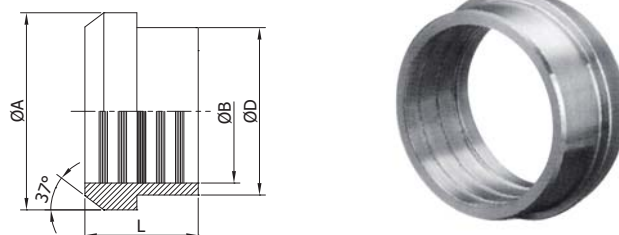
No.SM0523016



14R 扩管式平接头 Expanding Liner

Size	A	B	D	L
1"	33.3	25.5	29.5	19.1
1.5"	46.8	38.2	42.6	28.6
2"	60.3	50.9	55.7	33.3
2.5"	73.8	63.6	68.8	34.9
3"	87.3	76.3	81.9	36.5
4"	114.3	101.7	108.1	38.1

No.SM0521017

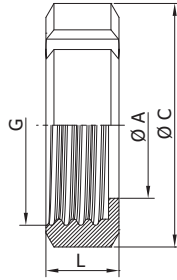


SMS

1.7 卫生级活接头 Sanitary Unions



No.SM0534018

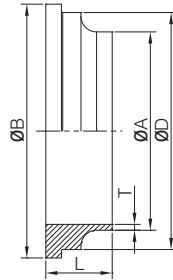


圆螺母
Round Nut

Size	A	C	G	L
25	32.5	51.0	RD40X1/6	19.0
32	40.3	60.0	RD48X1/6	22.0
38	48.5	74.0	RD60X1/6	23.0
51	61.0	84.0	RD70X1/6	24.0
63	74.0	100.0	RD85X1/6	28.0
76	87.0	114.0	RD98X1/6	30.0
89	100	125.0	RD110X1/6	31.0
102(小)	113.0	138.0	RD125X1/4	31.0
102(大)	117.0	150.0	RD132X1/6	31.0



No.SM0531020

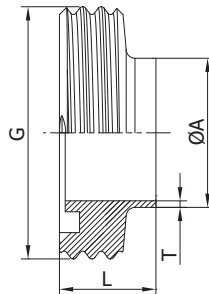


台阶型平接头
Stepped Liner

Size	A	B	D	L	T
25	25.4	35.5	32.0	15.5	1.5
32	31.8	43.5	40.0	16.0	1.5
38	38.1	55.0	48.2	16.0	1.5
51	50.8	65.0	60.7	17.0	1.5
63	63.5	80.0	73.7	19.0	2.0
76	76.2	93.0	86.7	19.0	2.0
89	88.9	105.8	99.2	19.0	2.0
102(小)	101.6	118.0	112.7	19.0	2.0
102(大)	101.6	127.0	116.2	19.0	2.0



No.SM0533019



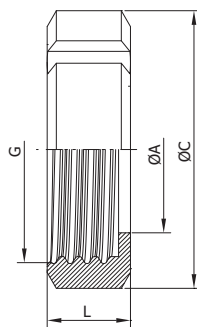
螺纹接头
Male

Size	A	G	L	T
25	25.4	RD40X1/6	19.0	1.5
32	31.8	RD48X1/6	23.0	1.5
38	38.1	RD60X1/6	23.0	1.5
51	50.8	RD70X1/6	23.0	1.5
63	63.5	RD85X1/6	27.0	2.0
76	76.2	RD98X1/6	27.0	2.0
89	88.9	RD110X1/6	30.0	2.0
102(小)	101.6	RD125X1/4	30.0	2.0
102(大)	101.6	RD132X1/6	30.0	2.0

SMS 1.7 卫生级活接头 Sanitary Unions

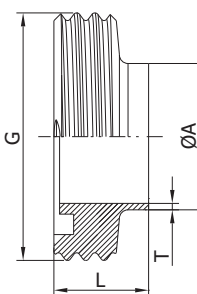
短型圆螺母 Short-type Round Nut				
Size	A	C	G	L
25	32.5	50.0	RD40X1/6	17.0
32	40.3	58.0	RD48X1/6	18.0
38	48.5	72.0	RD60X1/6	21.0
51	61.0	82.0	RD70X1/6	21.0
63	74.0	98.0	RD85X1/6	24.0
76	87.0	112.0	RD98X1/6	26.0
89	100	125.0	RD110X1/6	26.0
102	113.0	138.0	RD125X1/4	28.0

No.SM0534021



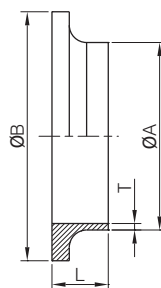
短型螺纹接头 short-type Male				
Size	A	G	L	T
25	25.4	RD40X1/6	15.0	1.5
32	31.8	RD48X1/6	16.0	1.5
38	38.1	RD60X1/6	20.0	1.5
51	50.8	RD70X1/6	20.0	1.5
63	63.5	RD85X1/6	22.0	2.0
76	76.2	RD98X1/6	23.0	2.0
89	88.9	RD110X1/6	23.0	2.0
102	101.6	RD125X1/4	26.0	2.0

No.SM0533022

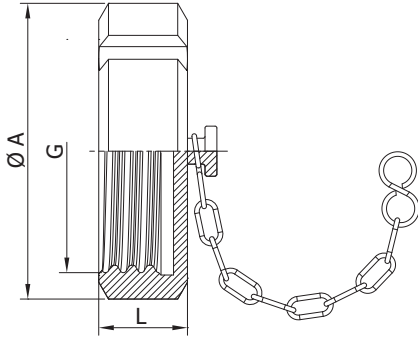


短型平接头 Short-type Liner				
Size	A	B	L	T
25	25.4	35.5	9.0	1.5
32	31.8	43.5	10.0	1.5
38	38.1	55.0	10.0	1.5
51	50.8	65.0	10.0	1.5
63	63.5	80.0	11.0	2.0
76	76.2	93.0	12.0	2.0
89	88.9	105.8	13.0	2.0
102	101.6	118.0	13.0	2.0

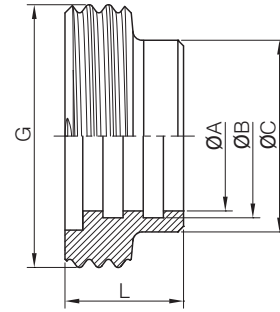
No.SM0531023



SMS 1.7 卫生级活接头 Sanitary Unions



No.SM0534024



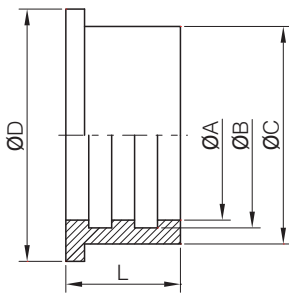
No.SM0533025

盲螺母 Blind Nuts

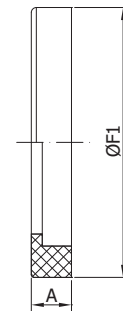
Size	A	G	L
25	51.0	RD40X1/6	19.0
32	60.0	RD48X1/6	22.0
38	74.0	RD60X1/6	23.0
51	84.0	RD70X1/6	24.0
63	100.0	RD85X1/6	28.0
76	114.0	RD98X1/6	30.0
89	125.0	RD110X1/6	31.0
102	138.0	RD125X1/4	31.0

膨胀型螺纹接头 SMS Expanding Male

Size	A	B	C	G	L
25	25.6	26.2	32.0	RD40X1/6	20.0
32	32.0	32.6	40.0	RD48X1/6	20.0
38	38.3	38.9	47.9	RD60X1/6	23.0
51	51.0	51.6	60.4	RD70X1/6	25.0
63	63.7	64.3	73.5	RD85X1/6	30.0
76	76.4	77.2	86.5	RD98X1/6	35.0
102	101.8	102.6	112.5	RD125X1/4	30.0



No.SM0531026



No.SM0530027

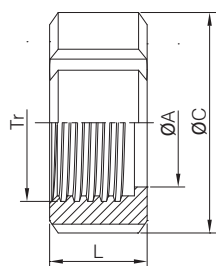
膨胀型平接头 Expanding Liner

Size	A	B	C	D	L
25	25.6	26.2	32.0	35.5	17.0
32	32.0	32.6	40.0	43.5	17.0
38	38.3	38.9	47.9	55.0	20.0
51	51.0	51.6	60.4	65.0	20.0
63	63.7	64.3	73.5	80.0	25.0
76	76.4	77.2	86.5	93.0	30.0
102	101.8	102.6	112.5	118.0	27.0

由任垫圈 Gasket for Union

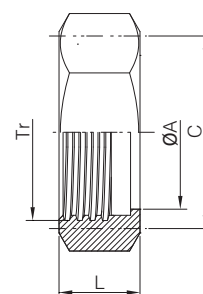
Size	A	F1
25	5.5	32.0
32	5.5	40.0
38	5.5	48.0
51	5.5	61.0
63	5.5	73.5
76	5.5	86.0
89	5.5	99.0
102	5.5	114.0

ISO 1.7 卫生级活接头 Sanitary Unions



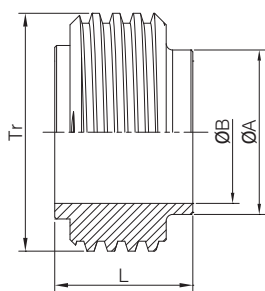
No.SM0544028

圆螺母 Round Nut					
Size	A	Tr	C	L	
Ø25	30.5	38.02x1/8 TACME	48.0	30.0	
Ø38	43.5	51.54x1/8 TACME	64.0	30.0	
Ø51	57.0	65.05x1/8 TACME	77.0	30.0	
Ø63	70.7	78.56x1/8 TACME	91.0	30.0	
Ø76	83.3	92.08x1/8 TACME	106.0	30.0	
Ø102	110.0	119.1x1/8 TACME	135.0	30.0	



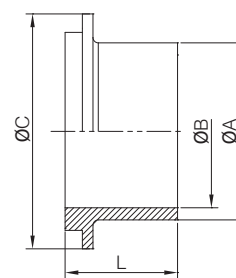
No.SM0544029

六角螺母 Hexagon Nut					
Size	A	Tr	C	L	
Ø25	30.3	38.02x1/8 TACME	46.0	30.0	
Ø38	43.5	51.54x1/8 TACME	61.0	30.0	
Ø51	57.0	65.05x1/8 TACME	76.2	30.0	
Ø63	70.7	78.56x1/8 TACME	91.3	30.0	
Ø76	83.3	92.08x1/8 TACME	106.5	30.0	
Ø102	110.0	119.1x1/8 TACME	137.7	30.0	



No.SM0543030

螺纹接头 Male					
Size	A	B	Tr	L	
Ø25	25.4	22.4	37.1x1/8 TACME	21.5	
Ø38	38.1	35.1	50.6x1/8 TACME	21.5	
Ø51	50.8	47.8	64.1x1/8 TACME	21.5	
Ø63	63.5	59.5	77.6x1/8 TACME	21.5	
Ø76	76.2	72.2	91.1x1/8 TACME	21.5	
Ø102	101.6	97.6	118.2x1/8 TACME	21.5	

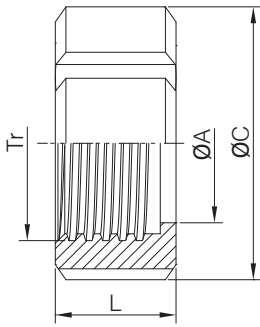


No.SM0541031

平接头 Liner					
Size	A	B	C	L	
Ø25	25.4	22.4	33.8	21.5	
Ø38	38.1	35.1	47.0	21.5	
Ø51	50.8	47.8	60.5	21.5	
Ø63	63.5	59.5	74.0	21.5	
Ø76	76.2	72.2	87.5	21.5	
Ø102	101.6	97.6	114.1	21.5	

ISO/IDF

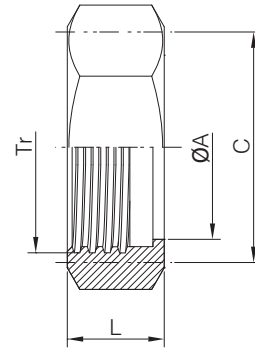
1.7 卫生级活接头 Sanitary Unions



No.SM0544032

圆螺母 (13R) Round Nut

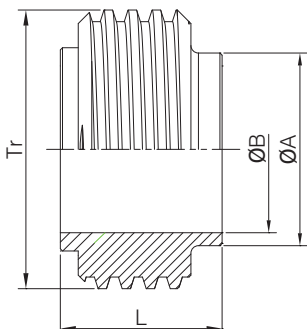
Size	A	Tr	C	L
Ø25	30.5	38.02x1/8 TACME	48.0	30.0
Ø38	43.5	51.54x1/8 TACME	64.0	30.0
Ø51	57.0	65.05x1/8 TACME	77.0	30.0
Ø63	70.7	78.56x1/8 TACME	91.0	30.0
Ø76	83.3	92.08x1/8 TACME	106.0	30.0
Ø102	110.0	119.1x1/8 TACME	135.0	30.0



No.SM0544033

六角螺母 (13H) Hexagon Nut

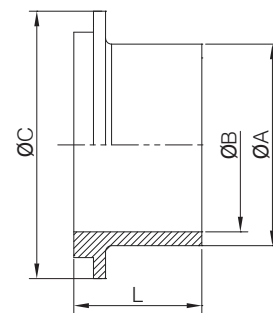
Size	A	Tr	C	L
Ø25	30.3	38.02x1/8 TACME	46.0	30.0
Ø38	43.5	51.54x1/8 TACME	61.0	30.0
Ø51	57.0	65.05x1/8 TACME	76.2	30.0
Ø63	70.7	78.56x1/8 TACME	91.3	30.0
Ø76	83.3	92.08x1/8 TACME	106.5	30.0
Ø102	110.0	119.1x1/8 TACME	137.7	30.0



No.SM0543034

螺纹接头 Male

Size	A	B	Tr	L
Ø25	25.6	22.6	37.1x1/8 TACME	21.5
Ø38	38.6	35.6	50.6x1/8 TACME	21.5
Ø51	51.6	48.6	64.1x1/8 TACME	21.5
Ø63	64.1	60.3	77.6x1/8 TACME	21.5
Ø76	76.7	72.9	91.1x1/8 TACME	21.5
Ø102	102.5	97.6	118.2x1/8 TACME	21.5



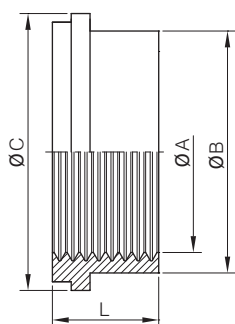
No.SM0541035

平接头 Liner

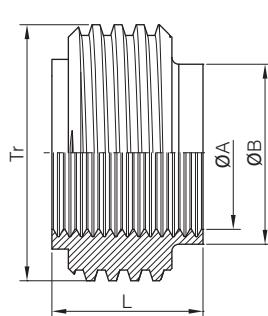
Size	A	B	C	L
Ø25	25.6	22.6	33.8	21.5
Ø38	38.6	35.6	47.0	21.5
Ø51	51.6	48.6	60.5	21.5
Ø63	64.1	60.3	74.0	21.5
Ø76	76.7	72.9	87.5	21.5
Ø102	102.5	97.6	114.1	21.5

ISO/IDF

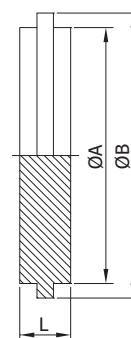
1.7 卫生级活接头 Sanitary Unions



No.SM0541036



No.SM0543037



No.SM0540038

IDF-14R 扩管式平接头 Expanding Liner IDF-14R

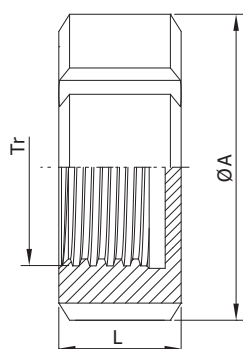
Size	A	B	C	L
Ø25	25.5	29.2	33.8	21.5
Ø38	38.2	42.7	47.0	21.5
Ø51	50.9	56.2	60.5	21.5
Ø63	63.6	69.9	74.0	21.5
Ø76	76.3	82.6	87.5	21.5
Ø102	101.7	111.1	114.1	21.5

IDF-15R 扩管式外螺纹接头 Expding Male IDF-15R

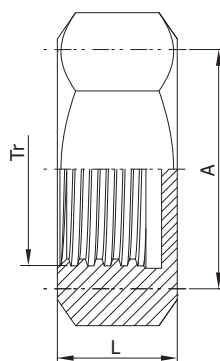
Size	A	B	Tr	L
Ø25	25.5	29.2	37.13x1/8 TACME	21.5
Ø38	38.2	42.7	50.65x1/8 TACME	21.5
Ø50	50.9	56.2	64.16x1/8 TACME	21.5
Ø63	63.6	69.9	77.67x1/8 TACME	21.5
Ø76	76.3	82.6	91.19x1/8 TACME	21.5
Ø102	101.7	111.1	118.2x1/8 TACME	21.5

IDF-16AMP 盲板 Blanks IDF-16AMP

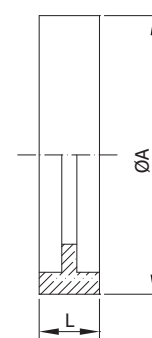
Size	A	B	L
Ø25	29.2	33.8	10.5
Ø38	42.7	47.0	10.5
Ø51	56.2	60.5	10.5
Ø63	69.9	74.0	10.5
Ø76	82.6	87.5	10.5
Ø102	111.1	114.1	10.5



No.SM0544039



No.SM0544040



No.SM0540041

IDF-13 圆形盲螺母 IDF Rounded Blind Nut

Size	A	Tr	L
Ø25	48.0	38.02x1/8 TACME	30.0
Ø38	64.0	51.54x1/8 TACME	30.0
Ø51	77.0	65.05x1/8 TACME	30.0
Ø63	91.0	78.56x1/8 TACME	30.0
Ø76	106.0	92.08x1/8 TACME	30.0
Ø102	135.0	119.1x1/8 TACME	30.0

六角盲螺母 Hexagon Blind Nut

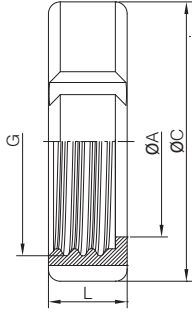
Size	A	Tr	L
Ø25	46.0	38.02x1/8TACME	30.0
Ø38	61.0	51.54x1/8TACME	30.0
Ø51	76.2	65.05x1/8TACME	30.0
Ø63	91.3	78.56x1/8TACME	30.0
Ø76	106.5	92.08x1/8TACME	30.0
Ø102	137.7	119.1x1/8TACME	30.0

由任垫圈 Gasket For Union

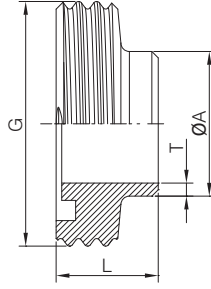
Size	A	L
Ø25	32.5	7.0
Ø38	46.0	7.0
Ø51	59.5	7.0
Ø63	73.0	7.0
Ø76	85.5	7.0
Ø102	114.0	7.0

DS

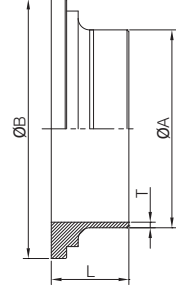
1.7 卫生级活接头 Sanitary Unions



No.SM0454042



No.SM0553043



No.SM0551044

圆螺母 Round Nut

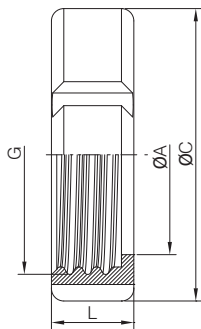
Size	A	C	G	L
1"	35.0	57.0	RD44X1/6	20.0
1 1/2"	48.5	71.0	RD58X1/6	20.0
2"	62.5	86.0	RD72X1/6	22.0
2 1/2"	76.5	103.0	RD88X1/6	24.0
3"	88.5	115.0	RD100X1/6	25.0
4"	117.0	147.0	RD130X1/6	28.0

螺纹接头 Male

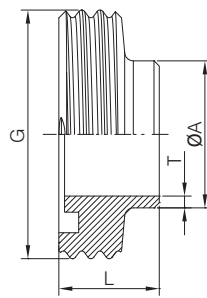
Size	A	G	L	T
1"	25.4	RD44X1/6	20.0	1.45
1 1/2"	38.4	RD58X1/6	22.0	1.45
2"	51.4	RD72X1/6	24.0	1.45
2 1/2"	63.9	RD88X1/6	26.0	1.7
3"	76.4	RD100X1/6	28.0	2.2
4"	102.0	RD130X1/6	34.0	2.2

平接头 Liner

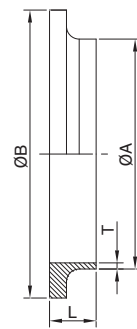
Size	A	B	L	T
1"	25.4	39.5	16.0	1.45
1 1/2"	38.4	53.5	18.0	1.45
2"	51.4	67.5	20.0	1.45
2 1/2"	63.9	83.5	22.0	1.7
3"	76.4	95.7	24.0	2.2
4"	102.0	124.0	30.0	2.2



No.SM0554045



No.SM0553046



No.SM0551047

短型圆螺母 Short-type Round Nut

Size	A	C	G	L
1"	35.0	57.0	RD44x1/6	20.0
1 1/2"	48.5	71.0	RD58x1/6	20.0
2"	62.5	86.0	RD72x1/6	22.0
2 1/2"	76.5	103.0	RD88x1/6	24.0
3"	88.5	115.0	RD100x1/6	25.0
4"	117.0	147.0	RD130x1/6	28.0

短型螺纹接头 Short-type Threaded Liner

Size	A	G	L	T
1"	25.4	RD44x1/6	18.5	1.45
1 1/2"	38.4	RD58x1/6	20.0	1.45
2"	51.4	RD72x1/6	20.0	1.45
2 1/2"	63.9	RD88x1/6	24.0	1.7
3"	76.4	RD100x1/6	24.0	2.2
4"	102.0	RD130x1/6	24.0	2.2

短型平接头 Short-type Liner

Size	A	B	L	T
1"	25.4	39.5	11.0	1.45
1 1/2"	38.4	53.5	11.0	1.45
2"	51.4	67.5	11.0	1.45
2 1/2"	63.9	83.5	12.0	1.7
3"	76.4	95.7	12.0	2.2
4"	102.0	124.0	12.0	2.2

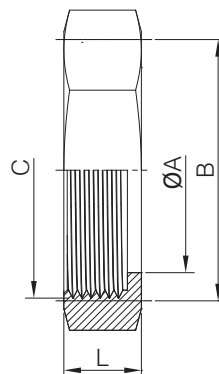
RJT

1.7 卫生级活接头 Sanitary Unions

六角螺母 Hexagon Nut

Size	A	B	C	L
1"	33.3	50.8	46.64X1/8 TWHIT	22.2
1 1/2"	46.0	65.0	59.34X1/8 TWHIT	22.2
2"	58.7	79.4	73.64X1/6 TWHIT	22.2
2 1/2"	71.4	92.1	86.34X1/6 TWHIT	22.2
3"	84.1	104.8	99.04X1/6 TWHIT	22.2
4"	109.5	130.2	124.44X1/6 TWHIT	22.2

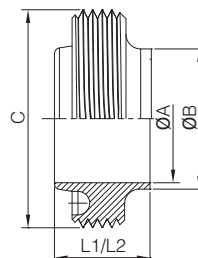
No.SM0564048



螺纹接头 Welding Male

Size	A	B	C	L1	L2
1"	22.2	25.65	45.7x1/8TWHIT	26.3	27.0
1 1/2"	34.9	38.35	58.4x1/8TWHIT	26.3	27.0
2"	47.6	51.05	72.7x1/6TWHIT	26.3	27.0
2 1/2"	60.3	63.75	85.4x1/6TWHIT	26.3	27.0
3"	73.0	76.45	98.1x1/6TWHIT	26.3	27.0
4"	97.6	101.85	123.5x1/6TWHIT	26.3	27.0

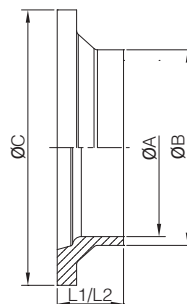
No.SM0563049



平接头 Liner

Size	A	B	C	L1	L2
1"	22.2	25.65	41.3	12.7	19.5
1 1/2"	34.9	38.35	54.0	12.7	19.5
2"	47.6	51.05	66.7	12.7	19.5
2 1/2"	60.3	63.75	79.4	12.7	19.5
3"	73.0	76.45	92.1	12.7	19.5
4"	97.6	101.85	117.5	25.4	19.5

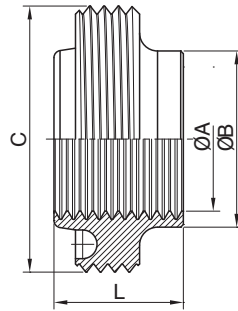
No.SM0561050



RJT

1.7 卫生级活接头 Sanitary Unions

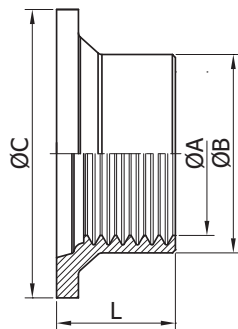
No.SM0563051



扩管式外螺纹接头
RJT Expanding Male

Size	A	B	C	L
1"	25.5	32.5	45.7x1/8TWHIT	27.0
1 1/2"	38.2	45.2	58.4x1/8TWHIT	27.0
2"	50.9	57.9	72.7x1/6TWHIT	27.0
2 1/2"	63.7	70.6	85.4x1/6TWHIT	27.0
3"	76.3	83.3	98.1x1/6TWHIT	27.0
4"	101.7	108.7	123.5x1/6TWHIT	27.0

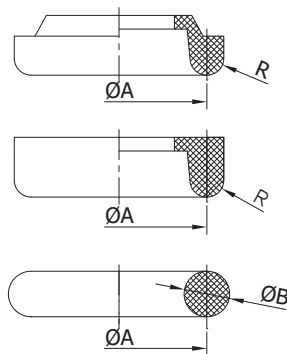
No.SM0561052



扩管式平接头
RJT Expanding Liner

Size	A	B	C	L
1"	25.5	32.5	41.3	19.5
1 1/2"	38.2	45.2	54.0	19.5
2"	50.9	57.9	66.7	19.5
2 1/2"	63.7	70.6	79.4	19.5
3"	76.3	83.3	92.1	19.5
4"	101.7	108.7	117.5	19.5

No.SM0560053



由任垫圈
Gasket for Union

Size	A	B	R
1"	33.3	6.6	3.2
1 1/2"	46.0	6.6	3.2
2"	58.7	6.6	3.2
2 1/2"	71.4	6.6	3.2
3"	84.1	6.6	3.2
4"	109.5	6.6	3.2
6"	162.6	6.6	3.2

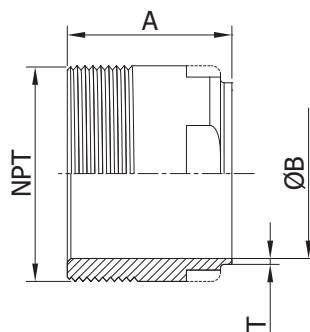
3A

1.8 卫生级螺纹接头 Sanitary Threaded Adapter

19WBF NPT 外螺纹焊接式接头 NPF Male Adapter

Size	A	B	T	NPT
1/2"	41.3	9.4	1.65	NPT1/2×14
3/4"	41.3	15.8	1.65	NPT3/4×14
1"	44.5	22.1	1.65	NPT1×11.5
1 1/4"	44.5	28.5	1.65	NPT1 1/4×11.5
1 1/2"	44.5	34.8	1.65	NPT1 1/2×11.5
2"	46.0	47.5	1.65	NPT2×11.5
2 1/2"	58.7	60.2	1.65	NPT2 1/2×8
3"	63.5	72.9	1.65	NPT3×8
4"	65.1	97.4	2.1	NPT4×8

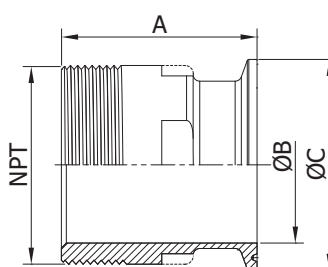
No.SM0623054



19-14MP NPT 外螺纹快装式接头 NPF Male Adapter

Size	A	B	C	NPT
1/2"	54.0	9.4	25.1	NPT1/2×14
3/4"	54.0	15.8	25.1	NPT3/4×14
1"	57.2	22.1	50.4	NPT1×11.5
1 1/4"	57.2	28.5	50.4	NPT1 1/4×11.5
1 1/2"	57.2	34.8	50.4	NPT1 1/2×11.5
2"	58.7	47.5	63.9	NPT2×11.5
2 1/2"	71.4	60.2	77.4	NPT2 1/2×8
3"	76.2	72.9	90.9	NPT3×8
4"	81.0	97.4	118.9	NPT4×8

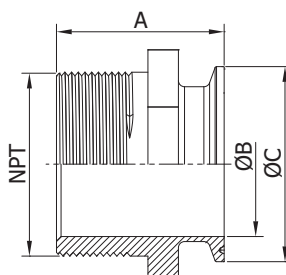
No.SM0623055



21MP NPT 外螺纹外六角快装式接头 NPT Male Hexagon Clamped Adapter

Size	A	B	C	NPT
1/2"	40.0	9.4	25.1	NPT1/2×14
3/4"	40.0	15.8	25.1	NPT3/4×14
1"	45.0	22.1	50.4	NPT1×11.5
1 1/4"	50.0	28.5	50.4	NPT1 1/4×11.5
1 1/2"	50.0	34.8	50.4	NPT1 1/2×11.5
2"	55.0	47.5	63.9	NPT2×11.5
2 1/2"	60.0	60.2	77.4	NPT2 1/2×8
3"	70.0	72.9	90.9	NPT3×8
4"	75.0	97.4	118.9	NPT4×8

No.SM0623056

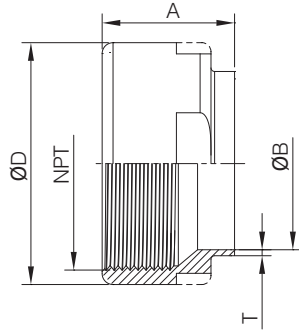


3A

1.8 卫生级螺纹接头 Sanitary Threaded Adapter



No.SM0624057

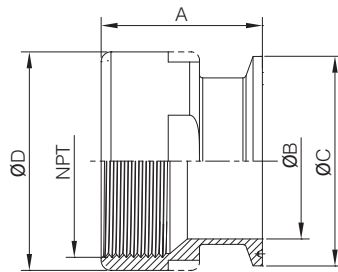


22WBF NPT 内螺纹焊接式接头
NPT Male Welded Adapter

Size	A	B	T	NPT	D
1/2"	28.6	9.4	1.65	NPT 1/2×14	30.0
3/4"	28.6	15.8	1.65	NPT 3/4×14	33.3
1"	28.6	22.1	1.65	NPT 1×11.5	41.3
1 1/4"	36.5	28.5	1.65	NPT 1 1/4×11.5	47.6
1 1/2"	36.5	34.8	1.65	NPT 1 1/2×11.5	55.0
2"	36.5	47.5	1.65	NPT 2×11.5	73.0
2 1/2"	41.3	60.2	1.65	NPT 2 1/2×8	79.0
3"	46.0	72.9	1.65	NPT 3×8	100.0
4"	50.8	97.4	2.1	NPT 4×8	125.0



No.SM0624059



22-14MP NPT 内螺纹快装式接头
NPT Male Clamped Adapter

Size	A	B	C	NPT	D
1/2"	41.3	9.4	25.1	NPT 1/2×14	30.0
3/4"	41.3	15.8	25.1	NPT 3/4×14	33.3
1"	41.3	22.1	50.4	NPT 1×11.5	41.3
1 1/4"	49.2	28.5	50.4	NPT 1 1/4×11.5	47.6
1 1/2"	49.2	34.8	50.4	NPT 1 1/2×11.5	55.0
2"	49.2	47.5	63.9	NPT 2×11.5	73.0
2 1/2"	54.0	60.2	77.4	NPT 2 1/2×8	79.0
3"	58.7	72.9	90.9	NPT 3×8	100.0
4"	66.7	97.4	118.9	NPT 4×8	125.0

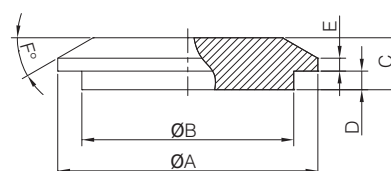
3A

1.8 卫生级重型堵头 Sanitary Solid End Cap

16AI-14WI (公) 重型堵头 Male Solid End Cap						
Size	A	B	C	D	E	F
1"	50.42	31.75	12.70	4.95	2.67	37°
1 1/2"	50.42	44.20	12.70	4.95	2.67	37°
2"	67.06	56.90	14.27	6.48	2.33	37°
2 1/2"	84.00	69.60	19.05	7.87	3.20	37°
3"	98.30	83.82	17.78	7.87	3.20	37°
4"	123.70	109.14	19.05	7.87	3.20	37°
6"	190.37	173.48	22.35	4.72	3.20	30°
8"	241.17	224.28	22.35	4.72	3.20	30°

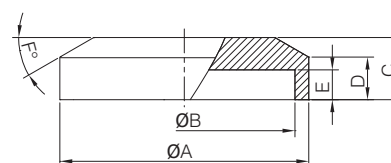


No.SM0620060



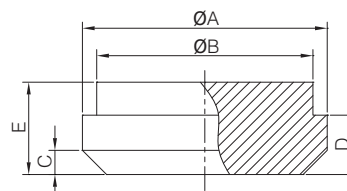
16AI-15WI (母) 重型堵头 Female Solid End Cap						
Size	A	B	C	D	E	F
1"	50.42	32.13	12.70	8.0	6.32	37°
1 1/2"	50.42	44.58	12.70	8.0	6.32	37°
2"	67.06	57.28	14.27	11.61	7.85	37°
2 1/2"	84.00	69.98	19.05	11.13	9.25	37°
3"	98.30	84.20	17.78	11.13	9.25	37°
4"	123.70	109.60	19.05	11.13	9.25	37°
6"	190.37	175.74	22.35	11.13	6.10	30°
8"	241.17	226.54	22.35	11.13	6.10	30°

No.SM0620061



堵头 (3A-16A) End Cap					
Size	A	B	C	D	E
1"	33.4	29.5	3.3	8.1	12.6
1.5"	46.8	42.6	4.0	8.7	14.3
2"	60.5	55.7	4.0	10.4	16.0
2.5"	73.9	68.8	4.8	11.9	18.2
3"	87.5	81.9	4.8	11.9	18.3
4"	114.5	108.1	6.3	14.2	20.6

No.SM0620062

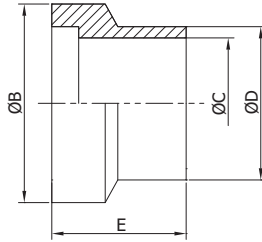


3A

1.8 卫生级卡盘 Sanitary Ferrules



No.SM0621063

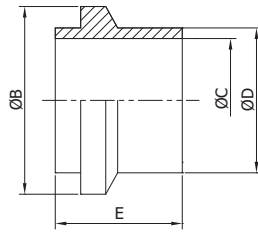


15WI/15WIL 重型卡盘
Heavy-type Ferrule

Size	B	C	D	E	
				15WI	15WIL
1"	50.67	22.1	25.65	19.84	44.5
1 1/2"	50.67	34.8	38.35	23.8	46.7
2"	67.06	47.5	51.05	26.19	58.9
2 1/2"	84.0	60.2	63.75	29.36	63.4
3"	98.3	72.9	76.45	30.94	68.2
4"	123.7	97.38	101.85	34.11	76.2



No.SM0621064



14WI/14WIL 重型卡盘
Heavy-type Ferrule

Size	B	C	D	E	
				14WI	14WIL
1"	50.67	22.1	25.65	19.84	44.5
1 1/2"	50.67	34.8	38.35	23.8	46.7
2"	67.06	47.5	51.05	26.19	58.9
2 1/2"	84.0	60.2	63.75	29.36	63.4
3"	98.3	72.9	76.45	30.94	68.2
4"	123.7	97.38	101.85	34.11	76.2

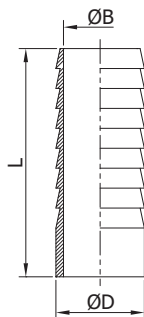
3A

1.9 卫生级软管接头 Sanitary Hose Nipple

焊接式软管接头 Welded Hose Nipple

Size	B	D	L
1/2"	9.0	12.7	38.1
3/4"	15.0	19.0	38.1
1"	21.4	25.4	101.6
1 1/4"	27.8	31.8	101.6
1 1/2"	34.0	38.1	101.6
2"	47.0	50.8	101.6
2 1/2"	59.5	63.5	101.6
3"	72.2	76.2	101.6
4"	97.6	101.6	98.4

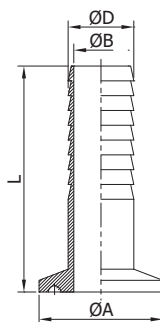
No.SM0721065



夹式软管接头 Clamped Hose Coupling

Size	A	B	D	L
1/2"	25.2	9.0	12.7	50.8
3/4"	25.2	15.0	19.0	50.8
1"	50.5	21.4	25.4	114.3
1 1/4"	50.5	27.8	31.8	114.3
1 1/2"	50.5	34.0	38.1	114.3
2"	64.0	47.0	50.8	114.3
2 1/2"	77.5	59.5	63.5	114.3
3"	91.0	72.2	76.2	114.3
4"	119.0	97.6	101.6	114.3

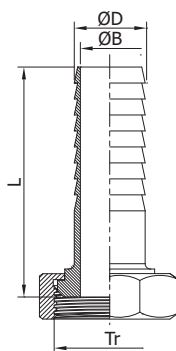
No.SM0722066



由任式软管接头 Union-type hose Coupling

Size	B	D	Tr	L
1"	21.4	25.4	38.02x1/8 TACME	119.9
1 1/2"	34.0	38.1	51.54x1/8 TACME	119.9
2"	47.0	50.8	65.05x1/8 TACME	120.7
2 1/2"	59.5	63.5	78.56x1/8 TACME	123.9
3"	72.2	76.2	92.08x1/8 TACME	124.7
4"	97.6	101.6	120.14x1/6 TACME	124.6

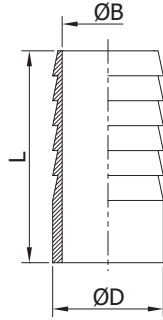
No.SM0725067



SMS

1.9 卫生级软管接头 Sanitary Hose Nipple

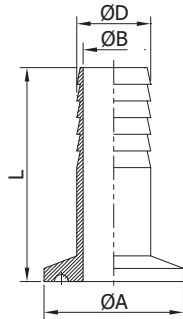
No.SM0731068



**焊接式软管接头
Welded hose coupling**

Size	B	D	L
12.7	9.0	12.7	45.0
19	15.0	19.0	45.0
25	21.4	25.4	60.0
32	27.8	31.8	60.0
38	34.0	38.1	60.0
51	47.0	50.8	60.0
63	59.5	63.5	70.0
76	72.2	76.2	80.0
102	97.6	101.6	80.0

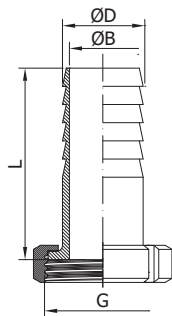
No.SM0732069



**夹式软管接头
Clamped hose coupling**

Size	A	B	D	L
12.7	25.2	9.0	12.7	66.0
19	25.2	15.0	19.0	66.0
25	50.5	21.4	25.4	81.0
32	50.5	27.8	31.8	81.0
38	50.5	34.0	38.1	81.0
51	64.0	47.0	50.8	81.0
63	77.5	59.5	63.5	91.0
76	91.0	72.2	76.2	101.0
102	119.0	97.6	101.6	101.0

No.SM0735070



**由任式软管接头
Union hose coupling**

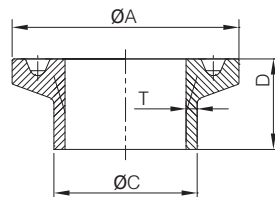
Size	B	D	G	L
25	21.4	25.4	RD40x1/6	69.0
32	27.8	31.8	RD48x1/6	70.0
38	34.0	38.1	RD60x1/6	70.0
51	47.0	50.8	RD70x1/6	70.0
63	59.5	63.5	RD85x1/6	81.0
76	72.2	76.2	RD98x1/6	92.0
102	97.6	101.6	RD125x1/4	93.0

DIN

2.0 卫生级夹式接头 Sanitary Clamped Ferrule

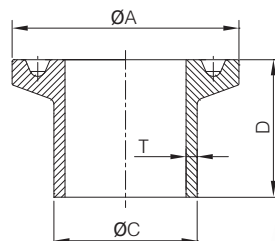
夹式接头 Clamped ferrule				
Size	A	C	D	T
DN15	34.0	18.0	18.0	1.5
DN20	34.0	22.0	18.0	1.5
DN25	50.5	28.0	21.5	1.5
DN32	50.5	34.0	21.5	1.5
DN40	50.5	40.0	21.5	1.5
DN50	64.0	52.0	21.5	1.5
DN65	91.0	70.0	28.0	2.0
DN80	106.0	85.0	28.0	2.0
DN100	119.0	104.0	28.0	2.0
DN125	145.0	129.0	28.0	2.0
DN150	167.0	154.0	28.0	2.0

RT0811071



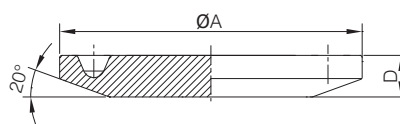
夹式接头 Clamped ferrule				
Size	A	C	D	T
DN15	34.0	18.0	28.0	1.5
DN20	34.0	22.0	28.0	1.5
DN25	50.5	28.0	28.0	1.5
DN32	50.5	34.0	28.0	1.5
DN40	50.5	40.0	28.0	1.5
DN50	64.0	52.0	28.0	1.5
DN65	91.0	70.0	28.0	2.0
DN80	106.0	85.0	28.0	2.0
DN100	119.0	104.0	28.0	2.0
DN125	145.0	129.0	28.0	2.0
DN150	167.0	154.0	28.0	2.0

RT0811072



盲板 Blank				
Size	A	D		
DN15	34.0	5.0		
DN20	34.0	5.0		
DN25	50.5	6.3		
DN32	50.5	6.3		
DN40	50.5	6.3		
DN50	64.0	6.3		
DN65	91.0	6.3		
DN80	106.0	7.9		
DN100	119.0	7.9		
DN125	145.0	10.5		
DN150	167.0	10.5		

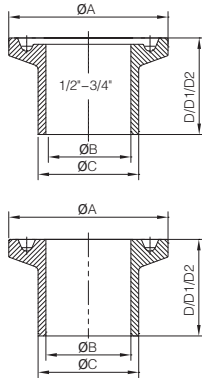
RT0810073



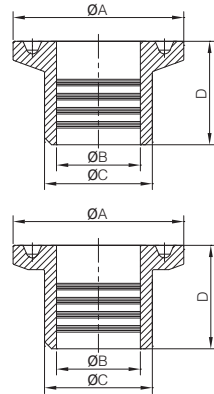
3A

2.0 卫生级夹式接头 Sanitary Clamped Ferrule

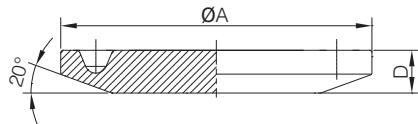
No.SM0821074



No.SM0821075



No.SM0820076



夹式接头
3A-14WMP/14MMP/14AMP
Clamped Ferrule

Size	A	B	C	D	D1	D2
1/2"	25.2	9.4	12.7	12.7	21.5	28.6
3/4"	25.2	15.75	19.05	12.7	21.5	28.6
1"	50.5	22.1	25.4	12.7	21.5	28.6
1 1/4"	50.5	28.5	31.8	12.7	21.5	28.6
1 1/2"	50.5	34.8	38.1	12.7	21.5	28.6
2"	64.0	47.5	50.8	12.7	21.5	28.6
2 1/2"	77.5	60.2	63.5	12.7	21.5	28.6
3"	91.0	72.9	76.2	12.7	21.5	28.6
4"	119.0	97.4	101.6	15.9	21.5	28.6
6"	166.8	146.8	152.4		21.5	38.1
8"	217.7	197.6	203.2		21.5	38.1
10"	268.5	248.4	254		21.5	38.1
12"	319.3	299.2	304.8		21.5	38.1

扩管式接头
Expanding Clamped Ferrule

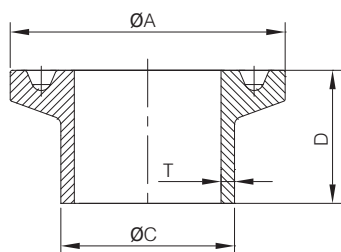
Size	A	B	C	D
1"	50.5	25.5	29.5	19.1
1.5"	50.5	38.2	42.6	28.6
2"	64	50.9	55.7	33.3
2.5"	77.5	63.6	68.8	34.9
3"	91	76.3	81.9	36.5
4"	119	101.7	108.1	38.1
40mm	50.5	40.2	43.8	28.6

盲板 3A-16AMP
Blank

Size	A	D
1/2"-3/4"	25.2	5.0
A37	34.0	6.3
1-1.5"	50.5	6.3
2"	64.0	6.3
2.5"	77.5	6.3
3"	91.0	6.3
4"	119.0	7.9
6"	166.8	11.1
8"	217.7	11.1
10"	268.5	11.1
12"	319.3	11.1

SMS

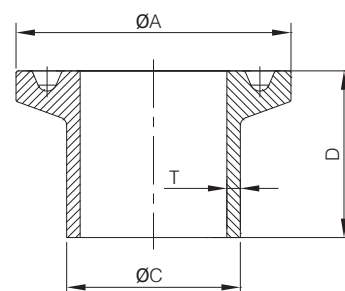
2.0 卫生级夹式接头 Sanitary Clamped Ferrule



No.SM0832077

短型夹式接头 Short-type Clamped Ferrule

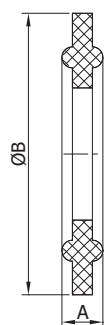
Size	A	C	D	T
25	50.5	25.4	12.7	1.5
32	50.5	31.8	12.7	1.5
38	50.5	38.1	12.7	1.5
51	64.0	50.8	12.7	1.5
63	77.5	63.5	12.7	2.0
76	91.0	76.2	12.7	2.0
89	106.0	88.9	12.7	2.0
102	119.0	101.6	15.9	2.0



No.SM0832078

夹式接头 Clamped Ferrule

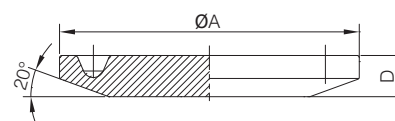
Size	A	C	D	T
19	25.2	19.05	21.0	1.5
25	50.5	25.4	21.0	1.5
32	50.5	31.8	21.0	1.5
38	50.5	38.1	21.0	1.5
51	64.0	50.8	21.0	1.5
63	77.5	63.5	21.0	2.0
76	91.0	76.2	21.0	2.0
89	106.0	88.9	21.0	2.0
102	119.0	101.6	21.0	2.0



No.SM0830079

卡箍垫圈 Gasket for Ferrule

Size	A	B
25	5.0	50.5
32	5.0	50.5
38	5.0	50.5
51	5.5	64.0
63	5.5	77.5
76	5.5	91.0
102	5.5	119.0



No.SM0830080

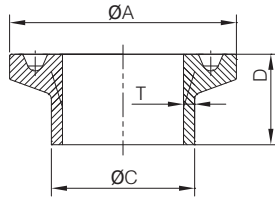
盲板 Blank

Size	A	D
12.7~19	25.2	5.0
37	34.0	6.4
25~38	50.5	6.4
51	64.0	6.4
63	77.5	6.4
76	91.0	6.4
102	119.0	8.0
152.4	166.8	11.0
203	217.7	11.0
254	268.5	11.0
305	319.3	11.0

ISO/IDF

2.0 卫生级夹式接头 Sanitary Clamped Ferrule

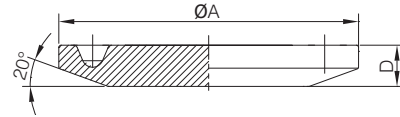
No.SM0842081



夹式接头
Clamped Ferrule

Size	A	B	C	D	T
Ø25	50.5	22.6	25.6	21.0	1.5
Ø33.7	50.5	31.3	34.3	21.0	1.5
Ø38	50.5	35.6	38.6	21.0	1.5
Ø51	64.0	48.6	51.6	21.0	1.5
Ø63	77.5	60.3	64.1	21.0	1.9
Ø76	91.0	72.9	76.7	21.0	1.9
Ø89	106.0	84.9	89.8	21.0	2.45
Ø102	119.0	97.6	102.5	21.0	2.45

No.SM0840082

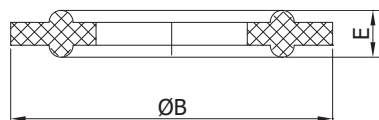


盲板
Blank (16AMP)

Size	A	D
Ø37	34	6.3
Ø12.7- Ø19	25.2	5.0
Ø25- Ø38	50.5	6.3
Ø51	64.0	6.3
Ø63	77.5	6.3
Ø76	91.0	6.3
Ø102	119.0	7.9
Ø133	166.7	10.6
Ø203	217.7	11.1
Ø254	268.5	13.0
Ø305	319.3	13.0

2.0 卫生级卡箍 Sanitary Clamp

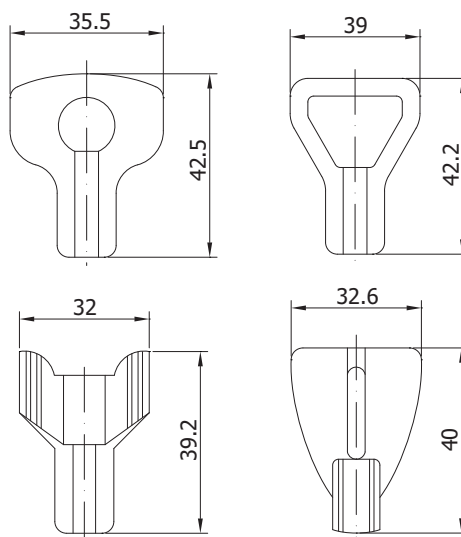
No.SM0810083



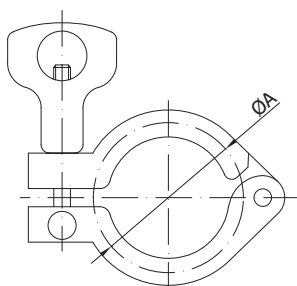
卡箍垫圈
Gasket for Ferrule

Size	E	B
DN15	5.0	34.0
DN20	5.0	34.0
DN25	5.0	50.5
DN32	5.5	50.5
DN40	5.5	50.5
DN50	5.5	64.0
DN65	5.5	91.0
DN80	5.5	106.0
DN100	5.5	119.0
DN125	5.5	145.0
DN150	5.5	167.0

No.SM0810087



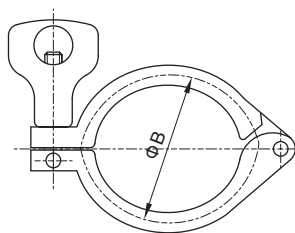
卡箍螺母
Clamp Nut



No.SM0810084

Size	A
DN10	37.0
DN15	37.0
DN20	37.0
DN25	53.0
DN32	53.0
DN40	53.0
DN50	67.0
DN65	94.0
DN80	109.0
DN100	122.0

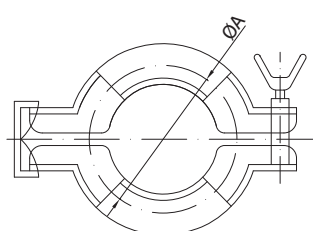
卡箍
Clamp



No.SM0800085

Size	B
1/2"	28.0
3/4"	28.0
1"	53.9
1 1/2"	53.9
2"	67.4
2 1/2"	80.9
3"	94.4
4"	122.4
6"	170.4
8"	221.2
10"	270.2

重型卡箍 (13MHH)
Heavy Duty Clamp



No.SM0810086

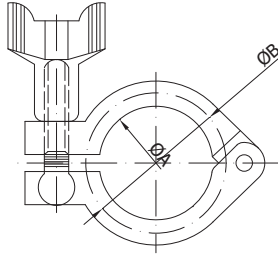
Size	A
DN20	58.5
DN25	58.5
DN32	58.5
DN40	58.5
DN50	72.0
DN65	99.0
DN100	127.0

冲压卡箍
Pressed Clamp

2.0 卫生级卡箍 Sanitary Clamp



No.SM0820088

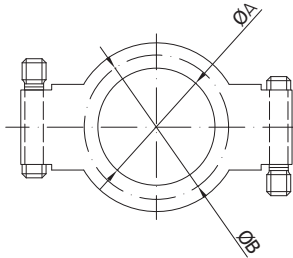


重型卡箍 (13MHHM)
Heavy Duty Clamp

Size	A	B
A37	27.8	37.0
1-1 1/2"	44.4	53.9
2"	57.8	67.4
2 1/2"	71.4	80.9
3"	84.0	94.4
3 1/2"	99.0	109.2
4"	110.0	122.4
4 1/2"	123.0	132.5
5"	129.0	147.8
6"	155.4	170.4
8"	205.0	221.2
10"	309.0	270.0

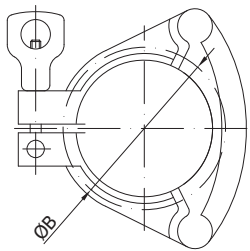


No.SM0820089



高压卡箍 (13MHP)
High Pressure Clamp

Size	A	B
1.5"	43.32	52.0
2"	56.44	65.5
2.5"	69.54	79.0
3"	77.56	92.5
4"	108.86	120.5
6"	158.0	170.0
8"	225.0	237.5
10"	258.2	272.8
12"	309.0	327.6

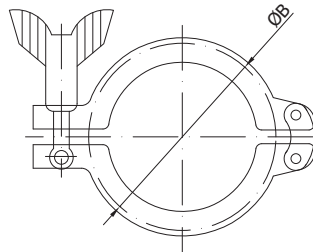


No.SM0820091

三片式卡箍 (13MHHM-3P)
Three-piece Clamp

Size	B
1"	53.9
1 1/2"	53.9
2"	67.4
2 1/2"	80.9
3"	94.4
4"	122.4

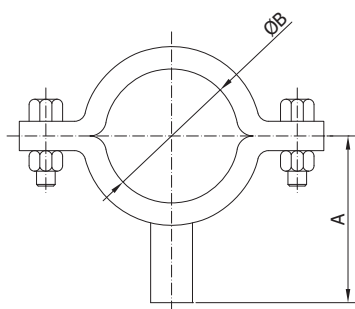
No.SM0820090



双销卡箍 (13MHHM-DP)
Double-pin Clamp

Size	B
1"	53.9
1.5"	53.9
2"	67.4
2.5"	80.9
3"	94.4
4"	122.4
4.5"	132.5
5"	147.8
6"	170.4
8"	221.2
10"	270.0

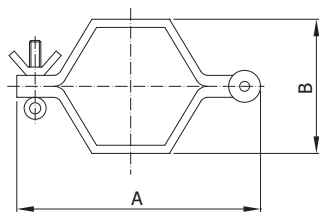
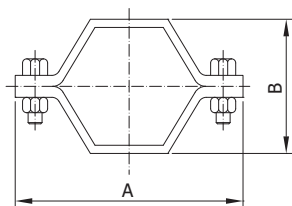
2.1 卫生级管支架 Sanitary Pipe Holder



No.SM0910092

管支架 Pipe Holder

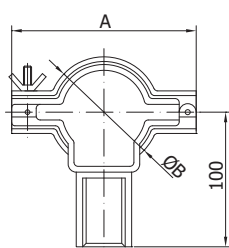
Size	A	B
1"	61.0	25.4
1 1/4"	64.0	31.8
1 1/2"	67.0	38.1
2"	74.0	50.8
2 1/2"	80.0	63.5
3"	86.0	76.2
3 1/2"	93.0	89.0
4"	100.0	101.6
4 1/4"	102.0	108.0
4 1/2"	105.0	114.0
5"	115.0	133.0
6"	128.0	159.0



No.SM0910093

六角形管支架 Hexagon Pipe Holder

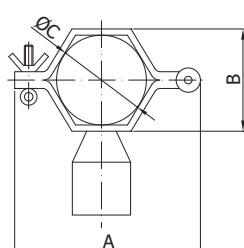
Size	A	B
1"	87.0	36.8
1 1/2"	101.6	53.9
2"	114.3	63.5
2 1/2"	120.6	79.4
3"	139.7	95.2
4"	171.4	120.6



No.SM0910094

圆形管支架带柄 Round Pipe Holder With Pipe

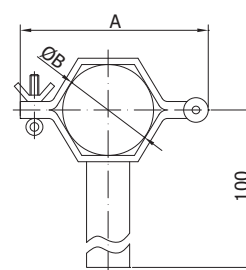
Size	A	B
1"	66.0	25.4
1 1/2"	76.0	38.1
2"	90.0	50.8
2 1/2"	105.0	63.5
3"	120.0	76.2
4"	146.0	101.6



No.SM0910095

六角形管支架带柄 Hexagon Pipe Holder With Pipe

Size	A	B	C
1"	66.0	45.0	25.4
1 1/2"	76.0	51.5	38.1
2"	90.0	58.0	50.8
2 1/2"	105.0	64.0	63.5
3"	120.0	70.5	76.2
4"	146.0	83.0	101.6



No.SM0910096

六角形管支架带柄 Hexagon Pipe Holder With Pipe

Size	A	B
1"	66.0	25.4
1 1/2"	76.0	38.1
2"	90.0	50.8
2 1/2"	105.0	63.5
3"	120.0	76.2
4"	146.0	101.6