

# R&S® ESRP EMI Test Receiver Precompliance measurements – fast and straightforward



# R&S®ESRP

## EMI Test Receiver

### At a glance

The R&S®ESRP EMI test receiver has been designed for diagnostic measurements during development and for precompliance measurements in order to prepare products for final certification testing. It measures electromagnetic disturbances in the frequency range from 10 Hz to 7 GHz, using either conventional stepped frequency scan or an FFT-based time domain scan, a method that significantly speeds up measurements. At the same time, the R&S®ESRP is a full-featured, powerful signal and spectrum analyzer for lab applications. The R&S®ESRP comes with a straightforward menu structure that combines with the intuitive touchscreen to make the test receiver very easy to operate in any mode.

The R&S®ESRP EMI test receiver uses an FFT-based time domain scan to carry out EMI measurements that took hours in the past in just a fraction of this time. This considerably cuts time and cost in product development and in preparing the product for final certification. An optional preselection module prevents overloading of the frontend and ensures reproducible results. The R&S®ESRP comes with tried-and-tested functions such as IF analysis for displaying the spectrum around disturbance signals, or spectrogram display in the analyzer mode, to help users analyze disturbance signals. The neatly organized menu structure makes it easy to navigate to a desired function or setting.

The instrument can simultaneously display up to six different traces on its 21 cm (8.4") touchscreen for fast, effective result analysis. Featuring compact dimensions, low weight, an optional ruggedized housing and optional DC power supply, the R&S®ESRP is perfectly suited also for mobile applications.

#### Key facts

- EMI test receiver and signal/spectrum analyzer combined in one box
- Optional preselection and preamplifier (R&S®ESRP-B2)
- Resolution bandwidths in line with CISPR, optionally in decade steps from 10 Hz to 1 MHz (R&S®ESRP-B29)
- Weighting detectors: max. peak, min. peak, average, RMS, quasi-peak, average with meter time constant, and RMS in line with current CISPR 16-1-1 version
- Standard-compliant disturbance measurements for pulsed disturbances with repetition frequencies  $\geq 10$  Hz (with R&S®ESRP-B2 preselection/preamplifier option)
- Very fast FFT-based time domain scan as an option (R&S®ESRP-K53)
- Automatic test routines
- IF analysis as an option (R&S®ESRP-K56)



# R&S®ESRP

## EMI Test Receiver

### Benefits and key features

#### **Disturbance measurements in line with commercial standards**

- ▮ Precompliance measurements
  - ▮ EMI measurements in spectrum analyzer mode
- ▷ [page 4](#)

#### **FFT-based time domain scan speeds up measurements**

- ▮ Measurement speed faster than with conventional method by multiple orders of magnitude
  - ▮ Parallel measurement of conducted disturbance signal levels throughout CISPR band B
- ▷ [page 5](#)

#### **Powerful measurement and analysis functions**

- ▮ Automatic test sequences with preview measurement, data reduction and final measurement
  - ▮ IF analysis function for displaying the spectrum around disturbance signals
  - ▮ Simultaneous display of up to six traces and four bargraphs
  - ▮ Preset antenna factors (transducers) and user-created transducer sets
  - ▮ EMI limit line library for commercial standards, with convenient editor
  - ▮ Remotely controlled measurements and automated EMI test routines using R&S®ES-SCAN and R&S®EMC32 EMC application software
  - ▮ Extensive analysis capabilities for general laboratory applications
  - ▮ Tracking generator for scalar network analysis (option)
- ▷ [page 6](#)

#### **Convenient operation, straightforward display**

- ▮ Touchscreen-based user interface with undo/redo functions
  - ▮ Straightforward scan settings in tabular format
  - ▮ Storage of results and instrument settings to internal or external media
  - ▮ Removable hard disk drive (HDD) to keep test data confidential
  - ▮ Remote control via GPIB or LAN
  - ▮ Drivers for LabView, LabWindows/CVI, VXI Plug & Play
  - ▮ Free-of-charge firmware updates – always in step with new developments
- ▷ [page 10](#)

#### **Robust and compact, ideal also for mobile use**

- ▮ DC supply for field use, optionally with external battery pack and/or ruggedized housing
  - ▮ Removable solid state drive (SSD) for high vibration and shock loading
  - ▮ Compact design
- ▷ [page 12](#)

# Disturbance measurements in line with commercial standards

## Precompliance measurements

The R&S®ESR has been designed with the main focus on diagnostic measurements in line with commercial EMC standards and on all measurements in the runup to final product certification. Equipped with optional preselection (R&S®ESRP-B2) including a 20 dB preamplifier, the R&S®ESRP performs measurements of intermittent disturbance signals with pulse repetition rates of 10 Hz or higher in line with the CISPR 16-1-1 basic standard.

The R&S®ESRP has a standard frequency range from 9 kHz to 3.6 GHz or 7 GHz. The R&S®ESRP-B29 option extends the frequency range down to 10 Hz.

The R&S®ESRP weighting detectors, including CISPR-average (average detector with meter time constant) and RMS-average, meet the requirements of the CISPR 16-1-1 basic standard, as do the EMI resolution bandwidths (200 Hz, 9 kHz, 120 kHz as 6 dB bandwidths, 1 MHz as impulse bandwidth). 6 dB resolution bandwidths in decade steps from 10 Hz to 1 MHz are optionally available (R&S®ESRP-B29), for example to enable measurements in line with MIL-STD-461, DO-160 and ICNIRP guidelines on exposure limits.

## EMI measurements in spectrum analyzer mode

Like all Rohde & Schwarz EMI test receivers, the R&S®ESRP is based on a powerful signal/spectrum analyzer platform. EMI analysis during development is possible in the spectrum analyzer mode, with or without preselection (option) activated.

Up to 16 configurable markers are placed on the frequencies of disturbance signals to carry out targeted analysis. Markers can be coupled with a CISPR weighting detector to enable direct comparison with limit values. The spectrum can also be displayed along a logarithmic frequency axis, which simplifies result analysis across a wide frequency range and displays limit lines in compliance with relevant standards. Critical frequencies are presented in a peak list, enabling fast comparison of disturbance signals with limit lines.

# FFT-based time domain scan speeds up measurements

## Measurement speed faster than with conventional method by multiple orders of magnitude

Speed is a crucial factor when testing devices that can be operated, or measured, only during a short period of time – either because they change their behavior (fluctuating or drifting disturbances), or because extended operation might be destructive, or because their operating cycle calls for high speed (as in the case of electric window regulators in motor vehicles). The R&S®ESRP-K53 option enhances the R&S®ESRP with the FFT-based time domain scan. Using this method, the R&S®ESRP performs measurements many times faster than with the conventional stepped frequency scan and thus makes it possible to handle such measurement scenarios. Users can also increase the measurement time (up to max. 100 s), in order to reliably detect intermittent interferers with low repetition rate or isolated pulses.

## Parallel measurement of conducted disturbance signal levels throughout CISPR band B

Disturbances emanating from switching power supplies fluctuate depending on the load state, often in the level. In this case, it is difficult to reproducibly find the highest level. Unlike a conventional test receiver, which scans the frequency in small frequency steps, the time domain scan of the R&S®ESRP measures the complete CISPR band B (150 kHz to 30 MHz) on 13,267 frequencies simultaneously. After approx. 50 s, the receiver already displays the entire disturbance spectrum with standard-compliant quasi-peak and CISPR-average weighting (measuring time 1 s), and the user can compare the highest levels directly with the applicable limit values.



The R&S®ESRP performs disturbance voltage measurements with quasi-peak and average weighting in a matter of seconds.



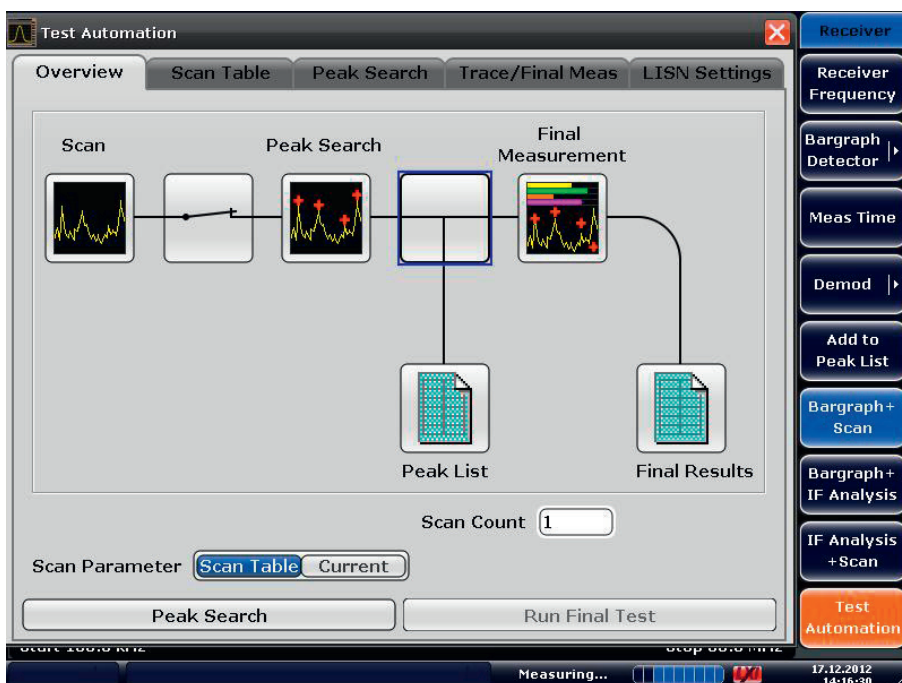
# Powerful measurement and analysis functions

## Automatic test sequences with preview measurement, data reduction and final measurement

A fast preview measurement with peak (and average) weighting combined with a final measurement on the critical frequencies with the specified CISPR weighting – this is the standard approach when performing disturbance measurements.

The R&S®ESR offers a choice of common limit lines defined in commercial product standards. The results of the preview measurement – obtained with a fast time domain scan or a stepped frequency scan – are compared with the limit lines. Next, the test receiver identifies critical frequencies according to user-defined criteria and presents them in a table (peak list). Users can manually edit the peak list by adding or deleting frequencies in an interactive way. In a last step, the test receiver performs a final measurement with standard-compliant measurement time and CISPR detector(s).

The R&S®ESRP can remotely control Rohde&Schwarz line impedance stabilization networks via its AUX port. Disturbance voltage measurements on power lines are performed fully automatically on all phases. This ensures reliable detection of the highest disturbance level.



The R&S®ESRP allows users to configure automatic test sequences (preview measurement, data reduction, final measurement) quickly and easily and execute them at the press of a button. The final measurement can also be carried out interactively.

## IF analysis function for displaying the spectrum around disturbance signals

The optional IF analysis function of the R&S®ESRP provides a spectral display of the RF input signal in a selectable range around the EMI receive frequency. The IF spectrum display can be coupled to the bargraph display for the current receive frequency (screenshot on page 9). Alternatively, the IF spectrum can be shown together with the stored results of the preview measurement. The center frequency of the IF spectrum can be controlled by the position of the marker, which is placed on the signal peaks detected during the preview measurement (screenshot on page 8).

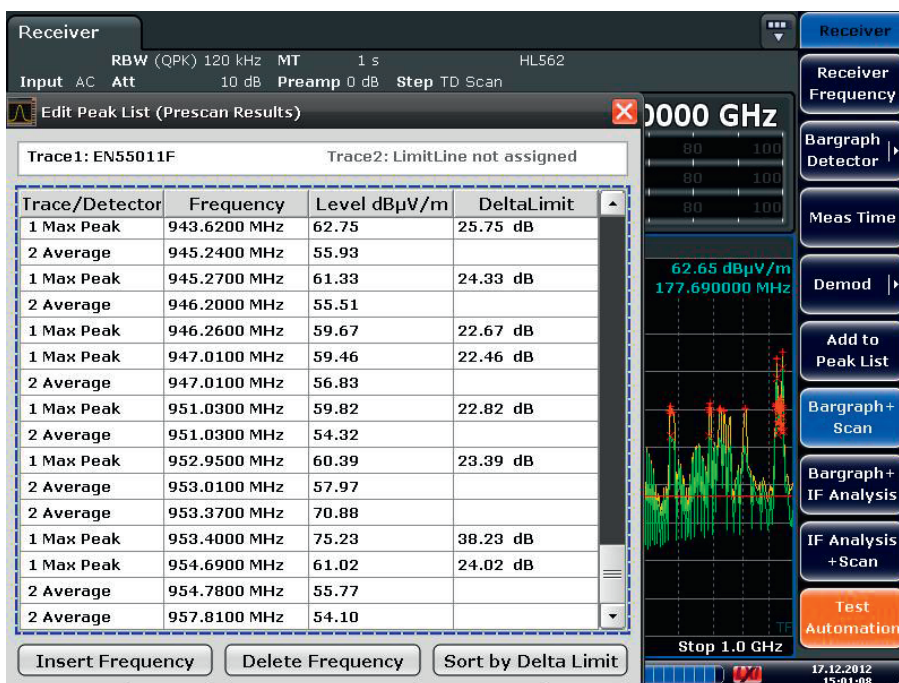
The center frequency of the IF spectrum always corresponds to the current receive frequency. The R&S®ESRP can therefore be tuned to the signal of interest quickly and accurately. In addition, the IF spectrum provides a detailed overview of the spectrum occupancy around the signal of interest and – with sufficiently wide IF bandwidth – information about the spectral distribution of a modulated signal in the measurement channel. Any signals received can be quickly classified as disturbance signals or wanted signals. AM or FM audio demodulation can be activated in parallel, making it easier to identify detected signals, for example in order to find and exclude ambient signals in open-area measurements.

## Simultaneous display of up to six traces and four bargraphs

The R&S®ESRP has a 21 cm (8.4") touchscreen with 800 × 600 pixel resolution. It can simultaneously display up to six different traces (including limit lines) in a single diagram. This affords the following benefits:

- Time-saving operation through simultaneous measurements using different weighting detectors
- Direct comparison of traces
- With up to four million values per trace, the R&S®ESRP performs frequency scans with narrow IF bandwidths even across very wide frequency ranges. Even for scans of this type, the R&S®ESRP provides high frequency resolution and, consequently, measures the disturbance frequency with high accuracy. This is a major advantage over spectrum analyzers or test receivers that use a lower number of test points
- The displayed frequency range can be traced back to real measured values even when zooming in closely, for example during subsequent detailed analysis

The R&S®ESRP provides a combined numeric and analog bargraph display of results for up to four detectors, including max. hold function. This allows users to rapidly recognize the effect of changes made to the device under test.



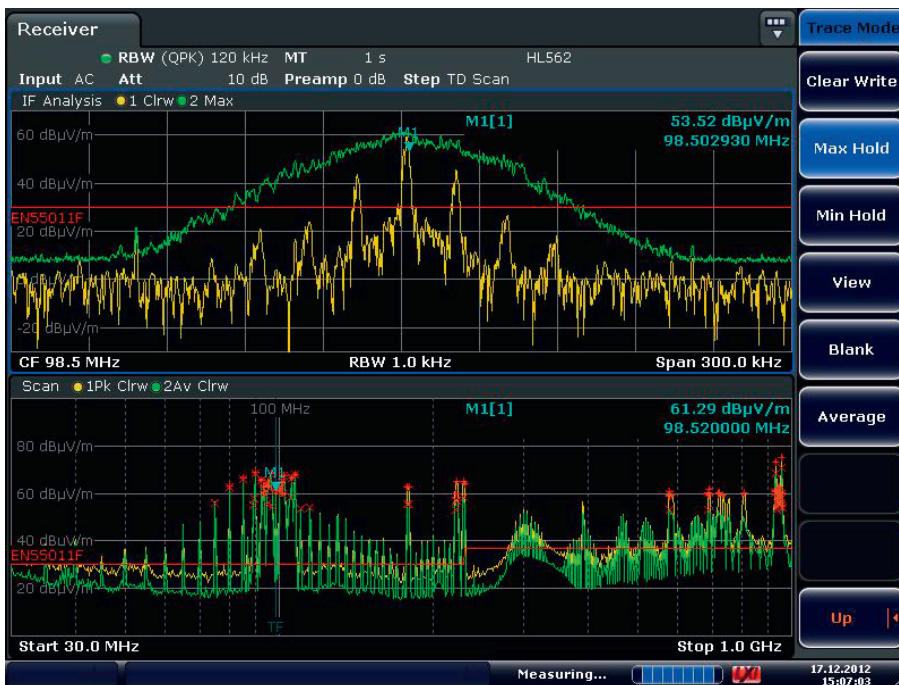
Results of standard-compliant final measurements presented in tabular format, stating the offset values (deltas) with respect to the applicable limit values. Results can be exported as an ASCII file for further processing.

### Preset antenna factors (transducers) and user-created transducer sets

The R&S®ESRP comes with a set of typical transducers for test antennas employed in radiated disturbance measurements. Users can also create and save correction tables of their own for antennas, cable losses, line impedance stabilization networks, external preamplifiers, etc. Multiple correction factors (for different antennas covering different frequency ranges, different cables, external preamplifiers, etc.) can be combined in transducer sets. The R&S®ESRP automatically takes into account all activated transducers and correction factors and selects the appropriate measurement unit.

### EMI limit line library for commercial standards, with convenient editor

The R&S®ESRP also includes a selection of important limit lines in line with commercial product emission standards. Users can edit limit lines and add new ones with an easy-to-use table editor.



Upper part of screen: continuous spectral display of RF input signal around the current receive frequency using the IF analysis function. Lower part of screen: stored results of preview measurement. The center frequency in the upper diagram is controlled by the marker position in the lower diagram (marker track function). Alternatively, the IF spectrum display can be coupled with the combined numeric and bargraph display.



## Remotely controlled measurements and automated EMI test routines using R&S®ES-SCAN and R&S®EMC32 EMC application software

The R&S®ES-SCAN EMI software is a cost-effective, user-friendly Windows software created especially for disturbance measurements during development. It ideally complements the R&S®ESRP.

The R&S®EMC32 EMC measurement software can also be used with the R&S®ESRP. The modular R&S®EMC32 software supports manual as well as partially or fully automated electromagnetic interference and immunity measurements in line with commercial and military standards. The software provides reliable recording, analysis, documentation and traceability of measurement results and offers remote-control capability for a wide variety of accessory components such as mast and turntable systems.

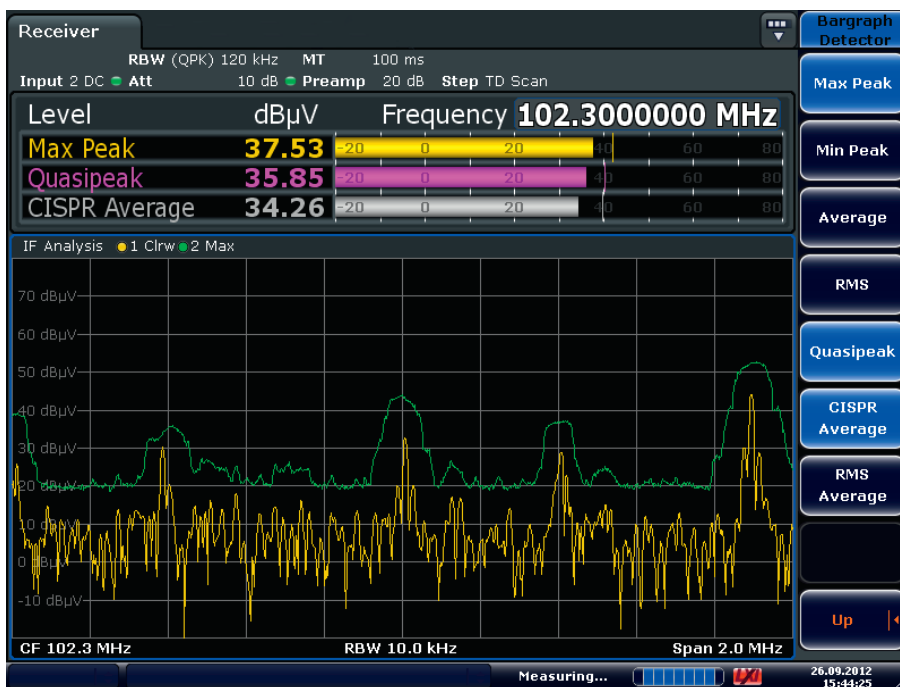
## Extensive analysis capabilities for general laboratory applications

The R&S®ESRP is based on a powerful signal and spectrum analyzer platform (R&S®FSV) and therefore features the extensive measurement capabilities of this platform. The test receiver provides test routines for many typical measurements (see R&S®FSV product brochure, PD 5214.0499.12), for example:

- AM modulation depth
- Third-order intercept (TOI)
- Phase noise
- Power measurement functions

## Tracking generator for scalar network analysis (option)

The optional, internal R&S®FSV-B9 tracking generator enhances the R&S®ESRP to operate as a scalar network analyzer in the frequency range from 9 kHz up to 7 GHz. With this option, users can quickly and easily determine the frequency-dependent insertion loss of test cable or filters and store the results as correction tables (transducers) in the R&S®ESRP.



Upper part of screen: Combined numeric and bargraph level display for the current receive frequency with up to four different weighting detectors.

Lower part of screen: Continuous spectral display of RF input signal around the receive frequency using the IF analysis function (max. 10 MHz span).

# Convenient operation, straightforward display

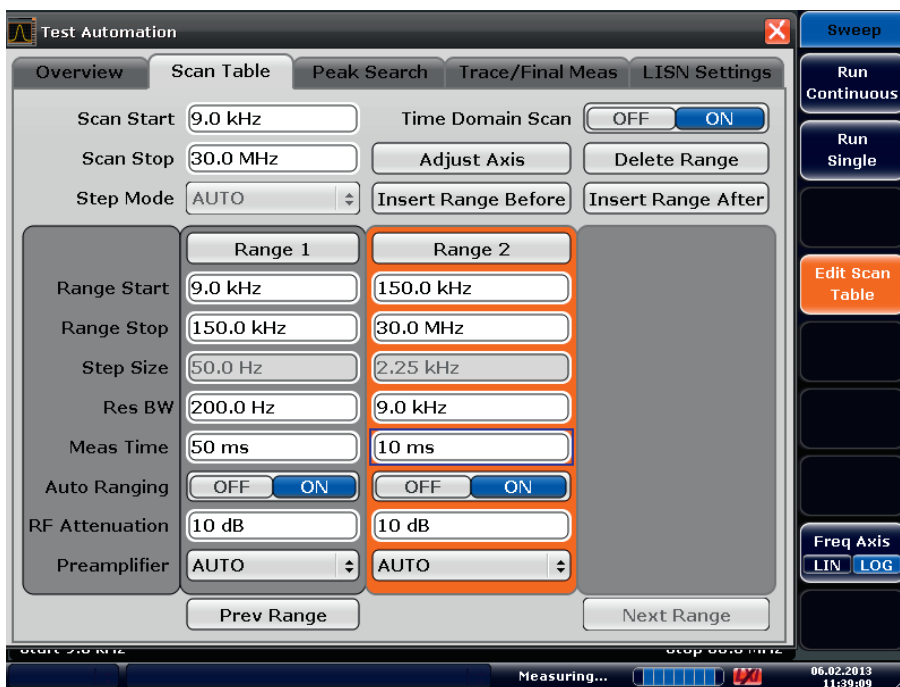
## Touchscreen-based user interface with undo/redo functions

The R&S®ESRP features a touchscreen GUI for convenient operation. The straightforward menu guidance allows users to familiarize themselves quickly with the instrument. All functions and measurement parameters can also be configured using mouse and keyboard. The large display is easy to read due to its high resolution of 800 × 600 pixels.

Up to six prior operating steps can be canceled and re-stored using the undo/redo softkeys. This enables users to quickly toggle between two different states or to correct erroneous entries.

## Straightforward scan settings in tabular format

In receiver mode, the scan table settings control the disturbance measurements in the frequency domain. The different scan parameters are presented in a clear manner and can be configured as required for a given task or device under test.



In receiver mode, the R&S®ESRP is tuned across a user-defined frequency range in line with the settings made in the scan table. Users can define up to ten frequency subranges and configure the parameters independently for each subrange (for example range start/stop, step size, measurement time, resolution bandwidth, input attenuation).

### **Integrated online help**

Context-sensitive help provides detailed information about the current function and lists the associated remote control commands. The online help supports even less experienced users, and programming becomes an easier task.

### **Storage of results and instrument settings to internal or external media**

Measurement data and instrument settings can be saved to, and recalled from, the instrument's internal hard disk or an external storage medium. Results can be stored as ASCII files for further processing. These files contain the trace data and the most important instrument settings. Data can be externally stored to a memory stick on the USB port, for example, or to a network drive via the LAN interface.

### **Removable hard disk drive (HDD) to keep test data confidential**

To keep their test data confidential, users can exchange the R&S®ESRP standard hard disk drive for another hard disk drive (R&S®ESRP-B19 option). The test receiver can then be sent in for calibration, repair or any other purpose without any confidential test data leaving the test lab. Device-specific alignment data remains in the test receiver, where it is stored separately and independently of user data.

### **Remote control via GPIB or LAN**

The R&S®ESRP can be remotely controlled via its standard IEC 625-2 (IEEE 488.2) interface or the LAN interface (10/100/1000BaseT).

### **Drivers for LabView, LabWindows/CVI, VXI Plug&Play**

For software integration of the R&S®ESRP, drivers for LabView, LabWindows/CVI and VXI Plug&Play are available free of charge.

# Robust and compact, ideal also for mobile use

## DC supply for field use, optionally with external battery pack and/or ruggedized housing

The optional R&S®FSV-B30 DC power supply makes it possible to operate the R&S®ESRP from 12 V to 15 V DC sources. Using the optional, rechargeable R&S®FSV-B32 battery pack, the R&S®ESRP can record field measurements for up to two hours on a single charge. In addition, a ruggedized housing with a carrying handle (R&S®FSV-B1 option) is available for mobile applications.

## Removable solid state drive (SSD) for high vibration and shock loading

The R&S®ESRP is equipped as standard with a removable hard disk drive. The hard disk drive can be replaced with a solid state drive (R&S®ESRP-B18 option) to handle scenarios with above-average fluctuations of the operating temperature (+5°C to +40°C), or when the instrument is exposed to strong shock and vibration loads, for example in vehicles.

## Compact design

Its compact and robust design and low weight of approx. 9.5 kg (without hardware options) make the R&S®ESRP an ideal choice also for mobile applications.



# Specifications in brief

| <b>Base unit</b>                            |   |   |
|---|---|---|
| <b>Frequency</b>                            |   |   |
| Frequency range                             | R&S®ESRP3   | 9 kHz to 3.6 GHz  |
|   | R&S®ESRP3 with R&S®ESRP-B29 option  | 10 Hz to 3.6 GHz  |
|   | R&S®ESRP7   | 9 kHz to 7 GHz  |
|   | R&S®ESRP7 with R&S®ESRP-B29 option  | 10 Hz to 7 GHz  |
| <b>Level</b>                                |   |   |
| Max. RF level (CW)                          | RF attenuation $\geq 10$ dB; RF preamplifier off  | 30 dBm (= 1 W)  |
|   | RF attenuation $\geq 10$ dB; RF preamplifier on   | 23 dBm (= 0.2 W)  |
| Max. pulse voltage                          | RF attenuation $\geq 10$ dB   | 150 V   |
| Max. pulse energy                           | RF attenuation $\geq 10$ dB; 10 $\mu$ s   | 1 mWs   |
| 1 dB compression                            | RF attenuation 0 dB;<br>RF preamplifier and preselection off  | +3 dBm, nominal   |
| <b>IF and resolution bandwidths</b>         |   |   |
|   | analyzer mode (span $\geq 10$ Hz) and receiver mode   | 10 Hz to 10 MHz ( $-3$ dB) in 1/2/3/5/10 steps  |
|   | analyzer and receiver mode  | 200 Hz, 9 kHz, 120 kHz ( $-6$ dB),<br>1 MHz (impulse bandwidth)   |
|   | with R&S®ESRP-B29 option in analyzer and receiver mode  | additionally 10 Hz to 100 kHz<br>( $-6$ dB) in decade steps   |
| Preselection (R&S®ESRP-B2 option)           | can be switched off in analyzer mode  | 16 fixed filters  |
| Preamplifier (R&S®ESRP-B2 option)           | can be switched on/off  | 1 kHz to 7 GHz, 20 dB gain, nominal   |
| Measurement time                            | analyzer mode (sweep time)  |   |
|   | span = 0 Hz   | 1 $\mu$ s to 16 000 s   |
|   | span $\geq 10$ Hz (swept)   | 1 ms to 16 000 s  |
|   | span $\geq 10$ Hz (FFT)   | 7 $\mu$ s to 16 000 s   |
|   | receiver mode (stepped frequency scan)  | 50 $\mu$ s to 100 s (per frequency)   |
|   | receiver mode (time domain scan)  | 50 $\mu$ s to 100 s (per frequency subrange)  |
| Frequency step size                         | receiver mode (stepped frequency scan)  | min. 1 Hz   |
|   | receiver mode (time domain scan)  | 0.25 $\times$ IF bandwidth  |
| Detectors                                   | receiver mode   | max. peak, min. peak, quasi-peak, RMS, average,<br>average with meter time constant (CISPR-average),<br>RMS-average (CISPR-RMS) |
| <b>Displayed average noise level (DANL)</b> |   |   |
|   | receiver mode, nominal, average detector (AV), RF attenuation 0 dB, termination 50 $\Omega$   |   |
|   | RF preamplifier off   |   |
|   | 500 MHz, bandwidth 120 kHz  | < 6 dB $\mu$ V  |
|   | 3 GHz, bandwidth 1 MHz  | < 17 dB $\mu$ V   |
|   | RF preamplifier on  |   |
|   | 500 MHz, bandwidth 120 kHz  | < $-7$ dB $\mu$ V   |
|   | 3 GHz, bandwidth 1 MHz  | < 5 dB $\mu$ V  |
| <b>Number of sweep (trace) points</b>       |   |   |
|   | analyzer mode (standard)  | 101 to 32 001   |
|   | analyzer mode (EMI)   | 101 to 200 001  |
|   | receiver mode   | max. 4 000 000  |
| Total measurement uncertainty               | CW signal, level 0 dB to $-70$ dB below reference level, S/N > 20 dB, auto sweep time,<br>RF attenuation 10 dB, 20 dB, 30 dB, 40 dB, preselection on, span/RBW < 100,<br>95% confidence level, +20 $^{\circ}$ C to +30 $^{\circ}$ C |   |
|   | 9 kHz $\leq f < 3.6$ GHz  | 0.47 dB   |
|   | 3.6 GHz $\leq f \leq 7$ GHz   | 0.57 dB   |

For data sheet see PD 3606.7576.22 and [www.rohde-schwarz.com](http://www.rohde-schwarz.com)



# Ordering information

| Designation   | Type         | Order number |
|---|--------------|--------------|
| EMI Test Receiver, 9 kHz to 3.6 GHz   | R&S®ESRP3    | 1316.4500.03 |
| EMI Test Receiver, 9 kHz to 7 GHz   | R&S®ESRP7    | 1316.4500.07 |
| Accessories supplied<br>Power cable, probe power adapter cable, quick start guide and CD-ROM (with operating manual and service manual) |              |              |
| <b>Software options</b>   |              |              |
| Time Domain Scan  | R&S®ESRP-K53 | 1316.4639.02 |
| IF Analysis   | R&S®ESRP-K56 | 1316.4897.02 |
| <b>Hardware options</b>   |              |              |
| Ruggedized Housing  | R&S®FSV-B1   | 1310.9500.02 |
| Preselection and RF Preamplifier  | R&S®ESRP-B2  | 1316.4700.02 |
| OCXO, Precision Reference Frequency   | R&S®FSV-B4   | 1310.9522.02 |
| OCXO, Enhanced Frequency Stability  | R&S®FSV-B4   | 1310.9522.03 |
| Tracking Generator, 9 kHz to 7 GHz  | R&S®FSV-B9   | 1310.9545.02 |
| Solid State Drive (SSD, removable)  | R&S®ESRP-B18 | 1316.3555.03 |
| Spare Hard Disk Drive (HDD, removable)  | R&S®ESRP-B19 | 1316.3561.03 |
| RF Preamplifier (100 kHz to 7 GHz)  | R&S®FSV-B22  | 1310.9600.02 |
| Frequency Extension 10 Hz, including EMI bandwidths in decade steps   | R&S®ESRP-B29 | 1316.4880.02 |
| DC Power Supply, 12 V to 15 V   | R&S®FSV-B30  | 1310.9897.02 |
| Lithium-Ion Battery Pack  | R&S®FSV-B32  | 1321.3750.02 |

| Service options  |             |   |
|--|-------------|---|
| Extended Warranty, one year                              | R&S®WE1ESRP | Please contact your local Rohde&Schwarz sales office. |
| Extended Warranty, two years                             | R&S®WE2ESRP |   |
| Extended Warranty, three years                           | R&S®WE3ESRP |   |
| Extended Warranty, four years                            | R&S®WE4ESRP |   |
| Extended Warranty with Calibration Coverage, one year    | R&S®CW1ESRP |   |
| Extended Warranty with Calibration Coverage, two years   | R&S®CW2ESRP |   |
| Extended Warranty with Calibration Coverage, three years | R&S®CW3ESRP |   |
| Extended Warranty with Calibration Coverage, four years  | R&S®CW4ESRP |   |

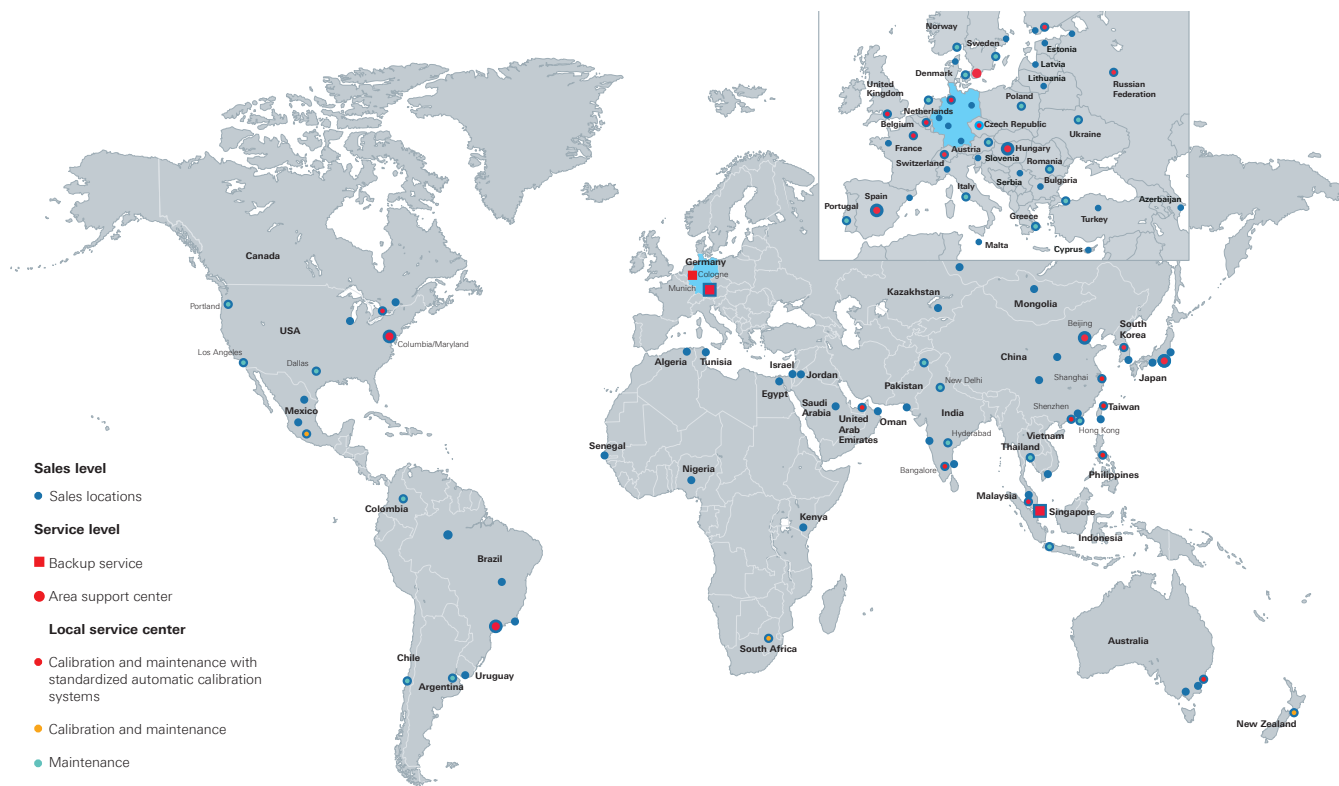
The Bluetooth® word mark and logos are registered trademarks owned by Bluetooth SIG, Inc. and any use of such marks by Rohde&Schwarz is under license. CDMA2000® is a registered trademark of the Telecommunications Industry Association (TIA-USA).

"WiMAX Forum" is a registered trademark of the WiMAX Forum. "WiMAX", the WiMAX Forum logo, "WiMAX Forum Certified" and the WiMAX Forum Certified logo are registered trademarks of the WiMAX Forum.

# From pre-sale to service. At your doorstep.

The Rohde&Schwarz network in over 70 countries ensures optimum on-site support by highly qualified experts. The user risks are reduced to a minimum at all stages of the project:

- ▮ Solution finding/purchase
- ▮ Technical startup/application development/integration
- ▮ Training
- ▮ Operation/calibration/repair



## Service you can rely on

- ▮ Worldwide
- ▮ Local and personalized
- ▮ Customized and flexible
- ▮ Uncompromising quality
- ▮ Long-term dependability

## About Rohde & Schwarz

Rohde & Schwarz is an independent group of companies specializing in electronics. It is a leading supplier of solutions in the fields of test and measurement, broadcasting, radiomonitoring and radiolocation, as well as secure communications. Established more than 75 years ago, Rohde & Schwarz has a global presence and a dedicated service network in over 70 countries. Company headquarters are in Munich, Germany.

## Environmental commitment

- ▮ Energy-efficient products
- ▮ Continuous improvement in environmental sustainability
- ▮ ISO 14001-certified environmental management system

Certified Quality System  
**ISO 9001**