



# AC-DC Conduction cooled PST21 150, 300, 600, 1200W

PST21, very compact AC-DC converter in conduction cooled format, incorporates input filtering, input and output protections, very robust mechanical package and connection required in most of the severe environment for industrial, defense type of applications. The PSU provides high reliability thanks to the integration of Vicor Corp. modules, high efficiency, input-to-output isolation, active very low inrush circuit, overtemperature protection, input over/undervoltage lockout. The PSU wide range input is protected against surges and transients and EMI filtered. The outputs are continuously short-circuit proof. Fanless, this solution is suitable for high reliability applications.

The PSU is configurable with 1 to 6 outputs according to models in many output voltages from 3,3V to 48Vdc, other outputs are even possible as semi-standard versions.

## General features

- Input : 85-265Vac
- Active PFC EN61000-3-2
- E.M.I. : EN55022, MIL-STD461E CE102 (M option)
- Output from 3,3V to 48Vdc
- Operating temperature -20°C +100°C baseplate
- Parallel or series operations up to several kW

## Signals

- Remote ON/OFF isolated
- Output LED
- Output voltage adjustment
- PowerGood
- Remote senses (A & B versions only)
- Paralleling with current share

## Options

- -H : Addition of a 15mm heatsink (H1 for transversal fins)
- -M : MIL-STD810, 704, MIL-STD 461 CE102
- -T : Components are changed to comply with -40°C operation
- -V : Components & PCB are covered with an acrylic coating
- -IP : Integration into IP65 enclosure

## Benefits

- Active very low inrush current limitation
- Very low profile 35 or 40mm
- High temperature operation 100°C baseplate
- Many signal available

Full datasheet on [www.powersystemtechnology.com](http://www.powersystemtechnology.com)

### PST21D

AC-DC, 150W, 1 output  
165 x 61 x 35mm  
Micro



### PST21C

AC-DC, 300W, 1-2 outputs  
200 x 80 x 40mm  
Micro, Mini



### PST21B

AC-DC, 600W, 1-3 outputs  
200 x 127 x 40mm  
Micro, Mini, Maxi



### PST21A

AC-DC, 1200W,  
1-6 outputs  
255 x 127 x 40mm  
Micro, Mini, Maxi



Fanless, conformal coated PSU is a benefit for industrial environment.



Low profile, chassis mounting, extended temperature range is essential for external display application.



Small size, conduction cooled, make it suitable to be mounted on the power amplifier heatsink.



IP65 option, ruggedization, conformal coating, -40°C to 90°C baseplate operation, are key functionalities for avionic applications.

Power System Technology - Z.A la Paillerie - 61340 BERD'HUIS (France)

Tel. +33 (0)2 33 83 94 94 - Fax +33 (0)2 33 83 94 95 - [sales@powersystemtechnology.com](mailto:sales@powersystemtechnology.com)

中国区总代理：上海佳舍珀电子科技有限公司

电话：021-50342560 | 手机：13764303579 | 电子邮件：[roman.xiao@fitpower.cn](mailto:roman.xiao@fitpower.cn) | [www.fitpower.cn](http://www.fitpower.cn)



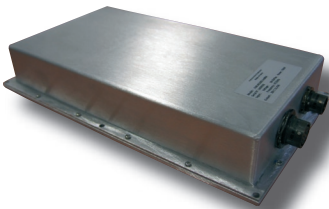
# AC-DC Conduction cooled PST21 150, 300, 600, 1200W

Integration & custom design with PST21



## 2 x PST21A-24600-MTV

Input : 85-264Vac 47-63Hz  
Output : 24V / 1200W  
300\*271\*50mm IP65 package  
External display application



## 1 x PST21B-28600-MV

Input : 85-264Vac 47-63Hz  
Output : 28V / 600W  
155\*275\*45mm Amphenol connectors IP65 package  
Defense application



## 1 x PST21C-28150-28150

Input : 85-264Vac  
Outputs : 115Vac / 4,5A 400Hz - 28Vdc / 4A - 28Vdc / 4A  
19''\*6U\*305mm  
Industrial application



## 1 x PST21C-1575-24150-MTV-01

Input : 90-264Vac 47-440Hz PFC correction  
Outputs : 15Vdc / 75W - 24Vdc / 150W  
200\*105\*70mm IP67  
Naval display application

Power System Technology - Z.A la Paillerie - 61340 BERD'HUIS (France)

Tel. +33 (0)2 33 83 94 94 - Fax +33 (0)2 33 83 94 95 - [sales@powersystemtechnology.com](mailto:sales@powersystemtechnology.com)

中国区总代理：上海佳舍珀电子科技有限公司

电话：021-50342560 | 手机：13764303579 | 电子邮件：[roman.xiao@fitpower.cn](mailto:roman.xiao@fitpower.cn) | [www.fitpower.cn](http://www.fitpower.cn)