

**Electrical
Specification
for:**

eFO800-124 Series

Wide range AC/DC Single Output 600W Power Supply

**Telkoor Part
Number:**

900-7124-0000

CUSTOMER	SIZE	CAGE CODE	S5417	DWG. NO.	7124-DOC1-10	REV	A	
GENERAL	SCALE		RELEASE DATE		SHEET	1	OF	7

REVISION HISTORY					
Rev Level	Rev Date	Change Made	Reason for Change	Approved By	Effective
A	21/03/2013	INITIAL RELEASE	-----	S. Sadot	20/06/2011

Approvals		
	Name	Date
Written by:	S. Sadot	21/03/2013
Engineering:	S. Sadot	21/03/2013
Marketing:	H. Liber	21/03/2013

CUSTOMER	SIZE	CAGE CODE	S5417	DWG. NO.	7124-DOC1-10	REV	A
GENERAL	SCALE	RELEASE DATE		SHEET	2	OF	7

Input:

Input Voltage: 85 - 264Vac
 Frequency: 47 - 63Hz
 Inrush Current: 50A maximum, cold start at 25°C
 Efficiency: 89% typical at 230Vac, full load
 84% typical at 115Vac, full load
 Power Factor: 0.96 typical at 230Vac, full load
 0.99 typical at 115Vac, full load
 Input Protection: Internal Line Fuse: IEC type 10A 250VAC SLO BLOW
 Brown – Out: 75 to 300Vac
 Leakage Current < 0.5mA @ 50/60Hz, 264Vac

Output Voltages & Currents:

Output	Output Voltage	Maximum Amps With 24CFM Forced Air	Peak Load
V1	+24V	33.3A	35A
V2 - Option	5V or 12V	5.0A	5.5A
V3 - Option	5V STANDBY	0.5A	1A

Output:

Maximum Power 300W for free convection base plate cooling, 800W with forced cooling air.
 Adjustment range ±5%
 Auxiliary standby output -Option 5 V @ 0.5A, regulated ± 4%.
 Second Output - Option 5V or 12V @ 5.0A max , regulated ± 5%.
 Line Regulation: ±0.1%
 Load Regulation: V1 only - Less than ± 0.5% for load changes from zero to full load
 Ripple & Noise 1% pk-pk Max, 20Mhz BW Measured on 120uF tantalum in parallel with a 0.1uF ceramic capacitor on output connector.
 Initial Set Point Tolerance: Vout ± 0.5%
 Minimum Load Not required.
 Overshoot & Undershoot: Less than 0.5% at turn ON and OFF
 Transient Load Response: ±5% Max. Deviation for load change of 25% to 75%, at slew rate of 1A/µsec, recovery time less then 500uSec
 Turn On Delay: 1 sec. Maximum
 Hold-up Time: 12mSec minimum.
 Turn-On Rise Time: 50mSec Typical
 Over-current Protection: 110 to 135% of I Max, constant current limit, automatic recovery.
 Over-voltage Protection: 120 to 135% above nominal (Latched Shut-Down) AC input must recycle to re-start.
 Temperature Protection: Shutdown due to excessive internal temperature 95± 5°C automatic recovery.
 Current Share (Option): Built In O-ring diode / FET
 Remote Sense Compensates for 0.5V lead drop min. will operate without remote sense connected.

CUSTOMER	SIZE	CAGE CODE	S5417	DWG. NO.	7124-DOC1-10	REV	A
GENERAL	SCALE	RELEASE DATE		SHEET	3	OF	7

Signals & Commands

Inhibit (on/off): Active low, output shut down (Active high – Option)
 DC Fail : TTL level Open collector active low.
 AC Fail (option): Open collector active high.
 I²C bus option I²C Passive data: s/n, model no., revision, and/or user defined data

Environmental Specifications:

Temperature: Operating: -20°C to +50°C (Linear de-rating to 50% output power at 70°C
 Storage: -45°C to +85°C.
 Temperature Coefficient: 0 to 70°C ± 0.02%/°C
 Cooling: 300W free convection cooling (base plate cooling). 800W forced air cooling (24CFM min.)
 Humidity: Maximum 95% RH non-condensing
 Altitude: Operating 6,000 ft. Non- operating 40,000 ft.
 Vibration: Three orthogonal axes at 1 octave/min, 5 min dwell at four major resonances at 0.75G peak, 5Hz to 500Hz.

Safety Regulatory & EMC Specifications:

Meets FCC CLASS B, CISPR 22 CLASS B, EN55022 CLASS B with external line filter

EN61000-3-2 Harmonics
 EN61000-3-3 Voltage fluctuations
 EN6000-4-2 ESD +8KV AIR +4KV contact discharge, performance criteria B
 EN61000-4-3 Radiated Immunity: 80-1000Mhz 3V/m, AM 80% (1KHz), criteria A
 EN61000-4-4 Fast transient: 1KV for AC power port, 0.5KV for DC power I/O and signals Port, performance criteria B
 EN61000-4-5 Surge: 2KV common mode and 1KV differential mode
 EN61000-4-6 3VRMS, 80% A.M. BY 1kHz
 EN61000-4-8 3A /m at 50Hz, performance criteria A.
 EN61000-4-11 Voltage dips and interruption: 30% reduction for 10mSec –Criteria B, 60% For 100mSec. Criteria C, 95% reduction for 5000mSec Criteria C.

Dielectric Withstand:
 Input to Case: 2200VDC
 Input to Output: 3000VAC
 Output to Case: 50VDC

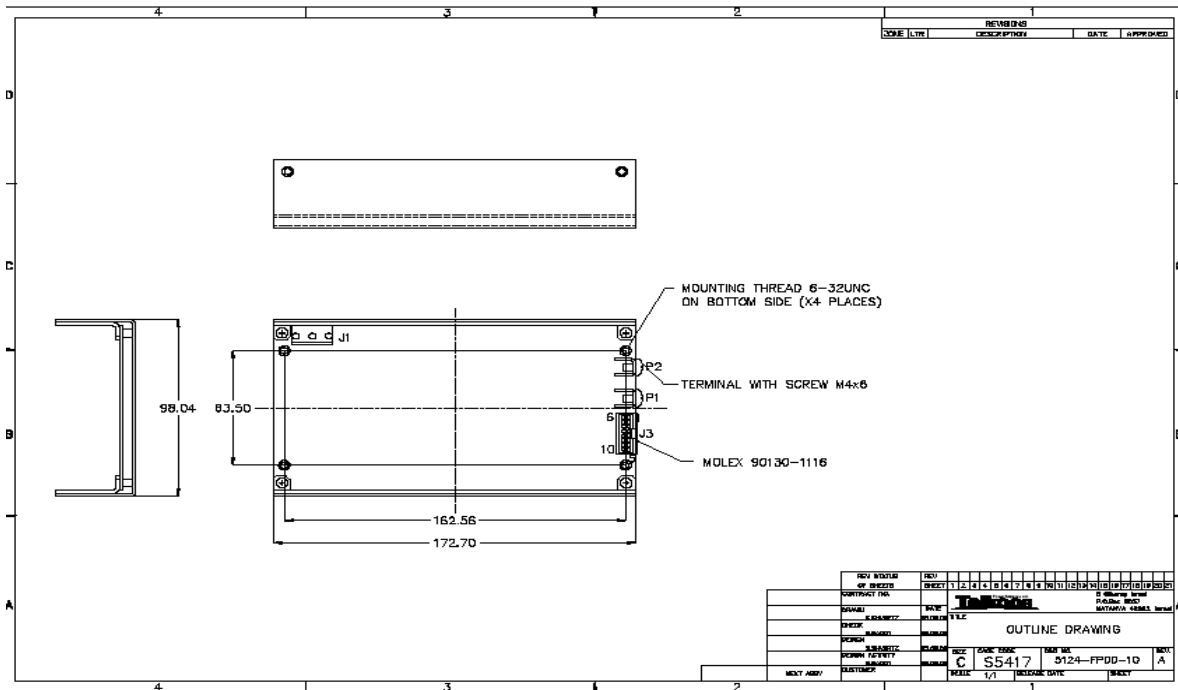
Safety Agency Compliance: UL 60950-2, CB Certificate & Report, CE MARK (LVD).
 MTBF: 300,000 hours minimum per BELCOR 332,issue 6 specification @30 degrees C.
 RoHS: Category 6

Mechanical Dimensions:

Size: 173 x 98 x 38.5(mm) (6.8" x 3.85" x 1.52")
 Weight: 850 gr. Max. (27 oz)
 Input Connector J1: Molex 3 Pin P/N 26-48-1055
 Mating connector: Housing – Molex 09-50-3051 (x1)
 Crimp terminal – 08-52-0113 (x3)
 M&C Connector J3: Molex 16 Pin P/N 90130-1116
 Mating connector: Housing 90142-0016
 Crimp terminal 90119-2110 (x16)
 Second output Connector J5: Molex 2 Pin P/N 26-48-1025
 Mating connector: Housing – Molex 09-50-3021 (x1)
 Crimp terminal – 08-52-0113 (x2)
 Main output 24V: Screw M4 X6

CUSTOMER	SIZE	CAGE CODE	S5417	DWG. NO.	7124-DOC1-10	REV	A
GENERAL	SCALE		RELEASE DATE		SHEET	4	OF
							7

Open Frame Outline Drawing:



REV	DATE	DESCRIPTION	DATE	APPROVED

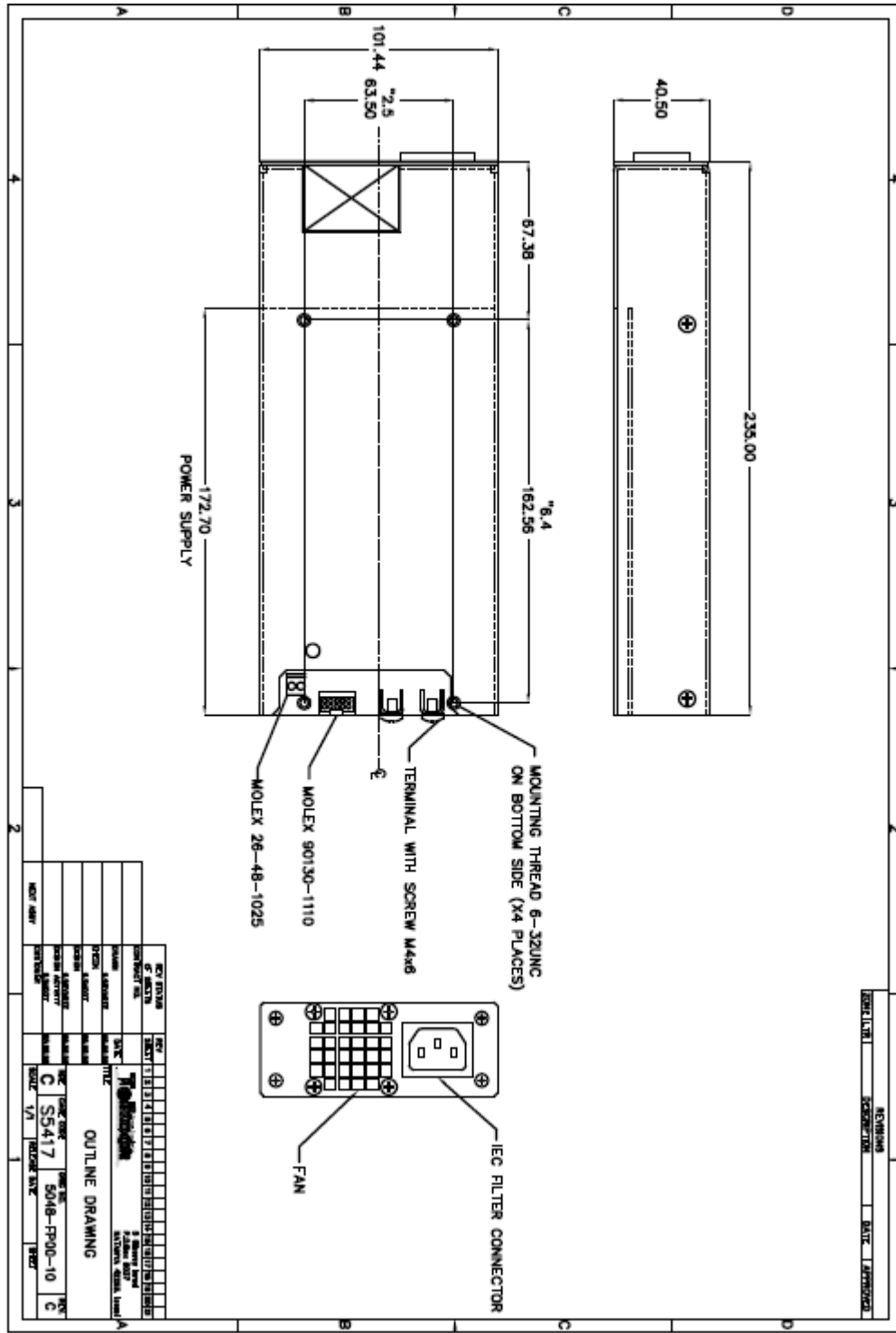
CONTRACT NO.	
DRAWN	
CHECKED	
DESIGNED	
APPROVED	
DATE	
SCALE	
PROJECT	
REV	
DATE	
SCALE	
PROJECT	
REV	
DATE	
SCALE	
PROJECT	
REV	
DATE	
SCALE	
PROJECT	

OUTLINE DRAWING

REV	C	DATE	0524-PP00-10	REV	A
SCALE	1/1	RELEASE DATE		SHEET	

CUSTOMER	SIZE	CAGE CODE	S5417	DWG. NO.	7124-DOC1-10	REV	A
GENERAL	SCALE	RELEASE DATE		SHEET	5	OF	7

COVER PLUS FAN AND FILTER OUTLINE DRAWING - OPTION



CUSTOMER	SIZE	CAGE CODE	S5417	DWG. NO.	7124-DOC1-10	REV	A
GENERAL	SCALE	RELEASE DATE		SHEET	6	OF	7

J1 - INPUT CONNECTOR PIN ASSIGNMENT

Pin	Signal Name.	Description
1	AC SAFETY GND	GROUND
3	AC NEUTRAL	NEUTRAL
5	AC LINE	LINE

J3 - OUTPUT CONNECTOR PIN ASSIGNMENT

Pin	Signal Name.	Description
1	GA-0	I2C GEOGRAPHIC ADD.
2	GA-1	I2C GEOGRAPHIC ADD.
3	GA-2	I2C GEOGRAPHIC ADD.
4	CURRENT SHARE	Current Share Signal
5	DC FAIL HIGH	TTL Level - Active High
6	DC FAIL LOW	TTL Level - Active Low
7	P- SENSE	+ Remote Sense
8	N - SENSE	- Remote Sense
9	IPMB - SDA	Serial Data I2C - Option
10	IPMB - SCL	Serial Clock I2C - Option
11	External 3.3V	External 3.3V for I2C
12	INHIBIT	Active Low (Active high - option)
13	AC_FAIL	Open Collector – Active Low- Option
14	RTN SIGNAL	5V Standby RTN
15	5V_OUT	5V Out - Option
16	5V_OUT RTN	5V Out RTN -Option

J5 - OUTPUT CONNECTOR PIN ASSIGNMENT

Pin	Signal Name.	Description
2	12V Out - Option	12V/1A - Option
1	2V Out RTN	12V/1A RTN

CUSTOMER	SIZE	CAGE CODE	S5417	DWG. NO.	7124-DOC1-10	REV	A	
GENERAL	SCALE		RELEASE DATE		SHEET	7	OF	7