

Electrical Specification for:	eF175-225
Telkoor Part number:	900-0225-0000
Product Description:	Dual Output 200W open frame power supply
Customer:	Martin professional
Customer Part number:	06150005

CUSTOMER	SIZE	CAGE CODE	S5417	DWG. NO.	0225-DOC1-10	REV	C
MARTIN PROFESSIONAL	SCALE	RELEASE DATE	30/10/06	SHEET	1	OF	5

REVISION HISTORY				
Rev Level	Rev Date	Change Made	Reason for Change	Effective
A	30/10/06	Release for production		30/10/06
B	25/01/07	Leakage current to 500uA		25/01/07
C	25/12/2007	Step Load Correction		25/12/2007

Approvals		
	Name	Date
Written by:	Sam Sadot	30/10/06
Engineering:	Sam Sadot	30/10/06
Sales & Marketing:	Mor Allon	30/10/06
Management:	Yossi Ben Ami	30/10/06

CUSTOMER	SIZE	CAGE CODE	S5417	DWG. NO.	0225-DOC1-10	REV	C
MARTIN PROFESSIONAL	SCALE	RELEASE DATE	30/10/06	SHEET	2	OF	5

Input:

Input Voltage: 85-265Vac
 Frequency: 47-63Hz
 Inrush Current: 60A maximum, cold start at 25°C, 250Vac
 Power Factor: 0.98 typical at 230Vac, full load
 0.99 typical at 115Vac, full load
 Efficiency: 80% typical at 230Vac, full load
 75% typical at 115Vac, full load
 Input Protection: Internal Line Fuse: IEC type 5A 250Vac Normal BLO
 Brown – Out: 75 to 300Vac

Output Voltages & Currents:

<i>Output</i>	<i>Output Voltage</i>	<i>Min</i>	<i>Max</i>	<i>Max. Peak</i>
V1	5.0V	0	40A	43A
V2	+12.0V	0	1.5A	2A

* Maximum output power at any combination within this table is 200 watts.

Output Power: 200W
 Line Regulation: $\pm 0.2\%$ for Vin (Min) to Vin (Max).
 Load Regulation:
 V1 $\pm 2\%$ for load change from zero to full load
 V2 $\pm 4\%$ for load change from 10% to 100% load
 Ripple & Noise
 V1 75mV P-P
 V2 120mV
 Output Voltage Adjustment Range: V1 only $\pm 5\%$
 Initial Set Point Tolerance: V2 $\pm 2\%$
 Overshoot & Undershoot: Less than 1% at turn ON-OFF
 Transient Load Response: $\pm 5\%$ Max. Deviation for load change of 50% to 75% , at slew rate of 1A/usec, recovery time less then 500Msec
 Turn On Delay: 2 sec. Maximum.
 Hold-up Time: 16msec minimum at any input voltage in range and full load
 Turn-On Rise Time: 50Msec Max.
 Over-current Protection: V1 105 to 130% of Im, constant current limit, automatic recovery (V2 SD)
 V2 110 to 175% of Im constant current limit, automatic recovery
 Over-voltage Protection: Outputs shut down at 125% Max. of nominal, AC input must Recycled to reset.
 Temperature Protection: Shutdown due to excessive internal temperature 90 to 97°C (U channel) automatic recovery.
 Remote Sense: Available on V1
 Current Share: N/A
 Hot Swap: N/A

CUSTOMER	SIZE	CAGE CODE	S5417	DWG. NO.	0225-DOC1-10	REV	C
MARTIN PROFESSIONAL	SCALE	RELEASE DATE	30/10/06	SHEET	3	OF	5

Signals & Commands

Inhibit: N/A

Power OK: Open collector, active low when any of V1, V2 outputs drop 10% below rated output.

Environmental Specifications:

Temperature: Operating: -5°C to +50°C (de-rating linearly to 70 °C with 50% de-rating).
Storage: -25°C to +85°C.

Temperature Coefficient: 0 to 70°C ± 0.005%/°C

Cooling: 200W continuous forced air cooling (250lfm, or 15CFM min.)

Humidity: Maximum 5% to 95% RH non-condensating.

Altitude: Operating 10,000 ft. Non- operating 40,000 ft.

Vibration: Three orthogonal axes at 1 octave/min, 5 min dwell at four major resonances at 0.75G peak, 5Hz to 500Hz.

Safety Regulatory & EMC Specifications:

MEETS FCC CLASS B, CISPR 22 CLASS B, EN55022 CLASS B – With an external input line filter

EN61000-3-2 HARMONICS

EN61000-3-3 VOLTAGE FLUCTUATION

EN60000-4-2 ESD +8KV AIR +4KV CONTACT DISCHARGE, performance criteria B

EN61000-4-3 RADIATED IMMUNITY: 80-1000Mhz 3V/m, AM 80% (1KHz), criteria A

EN61000-4-4 FAST TRANSIENT: 1KV for AC power port, 0.5KV for DC power I/O and signals Port, performance criteria B

EN61000-4-5 SURGE: 2KV common mode and 1KV differential mode

EN61000-4-6 3VRMS, 80% A.M. BY 1kHz

EN61000-4-8 3A /m at 50Hz, performance criteria A.

EN61000-4-11 VOLTAGE Dips and interruption: 30% reduction for 10mSec –Criteria B, 60% For 100mSec. Criteria C, 95% reduction for 5000mSec Criteria C.

Dielectric Withstand:

Input to Case: Input to case: 1500VAC.

Input to Output: Input to output: 3000VAC

Output to Case: Output to case: 100VDC.

Safety Agency Compliance (Pending): UL 60950-1
EN-60950-1
CE - MARK

Leakage Current: <500uA @ 50/60 Hz, 264Vac input.

MTBF: 300,000 hours minimum per BELCOR 332, issue 6 specification @30 degrees C (Max. junction temperature 110°C, Capacitors 105°C)

Mechanical Dimensions

Size 127mm x 84mm x 38.0mm

Weight 650 Gr.

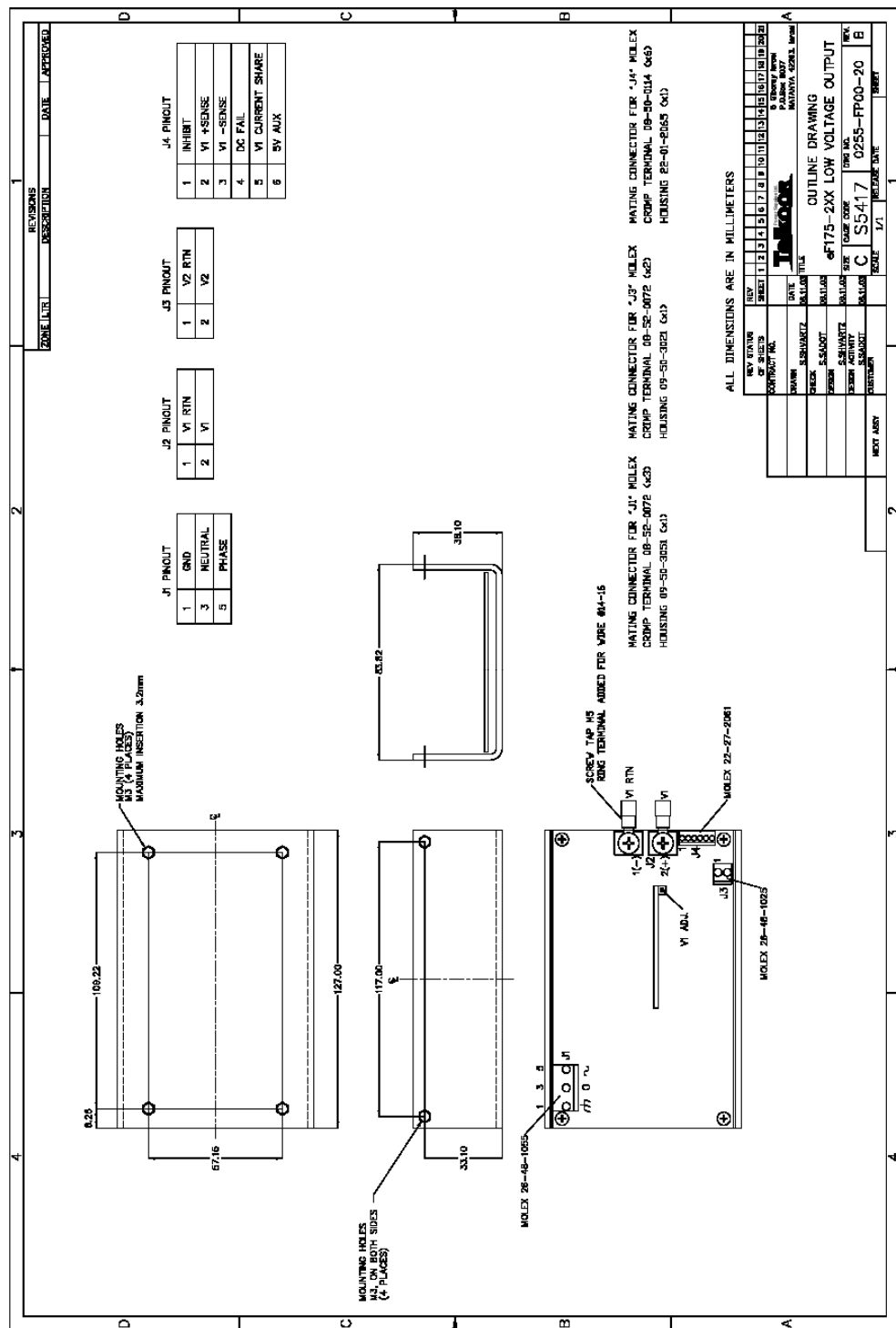
Input AC Connector Molex 26-48-1055

Output Connector V1 two #10 Lug
V2 Molex 26-48-1025

Command & Control Connector Molex 22-27-2061

CUSTOMER	SIZE	CAGE CODE	S5417	DWG. NO.	0225-DOC1-10	REV	C
MARTIN PROFESSIONAL	SCALE	RELEASE DATE	30/10/06	SHEET	4	OF	5

Outline Drawing



CUSTOMER	SIZE		CAGE CODE	S5417	DWG. NO.	0225-DOC1-10	REV	C
MARTIN PROFESSIONAL	SCALE		RELEASE DATE	30/10/06	SHEET	5	OF	5