

Electrical Specification for:	eF175-148
TelkooR Part number:	900-0448-0000
Product Description:	Wide Range AC/DC Single Output 200W Open Frame power supply
Customer:	General

CUSTOMER	SIZE	CAGE CODE	S5417	DWG. NO.	0448-DOC1-10	REV	B1	
GENERAL	SCALE		RELEASE DATE	1/12/05	SHEET	1	OF	5

REVISION HISTORY				
Rev Level	Rev Date	Change Made	Reason for Change	Effective
B	26/11/2007	Updated output current & leakage current	Error correction	26/11/2007
B1	17/02/08	Update the over voltage point to 130%	Error correction	17/02/08

Approvals		
	Name	Date
Written by:	Sam Sadot	11/6/2007
Engineering:	Moti Heller	11/6/2007
Sales & Marketing:	Boaz Weiss	11/6/2007
Management:	Yossi Ben Ami	11/6/2007

CUSTOMER	SIZE	CAGE CODE	S5417	DWG. NO.	0448-DOC1-10	REV	B1
GENERAL	SCALE	RELEASE DATE	1/12/05	SHEET	2	OF	5

Input:

Input Voltage: 85-264VAC
 Frequency: 47-63Hz
 Inrush Current: 60A maximum, cold start at 25°C, 250Vac
 Power Factor: 0.98 typical at 230Vac, full load
 0.99 typical at 115Vac, full load
 Efficiency: 80% typical at 230Vac, full load
 75% typical at 115Vac, full load
 Input Protection: Internal Line Fuse: IEC type 5A 250Vac Normal BLO
 Brown – Out: 75 to 300Vac

Output Voltages & Currents:

<i>Output</i>	<i>Output Voltage</i>	<i>I Min</i>	<i>I Max</i>	<i>I Peak</i>
V1	48.0 V	0	4.2 A	4.5A

Output Power: 200W
 Line Regulation: $\pm 0.2\%$ for V_{in} (Min) to V_{in} (Max).
 Load Regulation:
 V1 $\pm 2\%$ for load change from zero to full load
 Ripple & Noise
 V1 150mV P-P 20MHz BW
 Output Voltage Adjustment Range V1 $\pm 5\%$

Overshoot & Undershoot: Less than 1% at turn ON-OFF
 Transient Load Response: $\pm 5\%$ Max. Deviation for load change of 25% to 75%, at slew rate of 1A/usec, recovery time less then 500Msec
 Turn On Delay: 2 sec. Maximum.
 Hold-up Time: 16msec minimum at any input voltage in range and full load
 Turn-On Rise Time: 50msec Max.
 Over-current Protection: V1 105 to 130% of I_m , constant current limit, automatic recovery
 Over-voltage Protection: Outputs shut down at 130% of V1 Nominal, AC input must Recycled to reset.
 Temperature Protection: Shutdown due to excessive internal temperature 90 to 97°C (base plate) automatic recovery.
 Remote Sense: Outputs are internally sensed at The output connector
 Current Share: N/A
 Hot Swap: N/A

CUSTOMER	SIZE	CAGE CODE	S5417	DWG. NO.	0448-DOC1-10	REV	B1
GENERAL	SCALE	RELEASE DATE	1/12/05	SHEET	3	OF	5

Signals & Commands

Inhibit: N/A
 Power OK: N/A

Environmental Specifications:

Temperature: Operating: -5°C to +50°C (de-rating linearly to 70 °C with 50% de-rating).
 Storage: -25°C to +85°C.
 Temperature Coefficient: 0 to 70°C ± 0.005%/°C
 Cooling: 100W free convection cooling (base plate cooling). 200W continuous forced air-cooling (250 LFM, or 15CFM min.)
 Humidity: Maximum 5% to 95% RH non-condensating.
 Altitude: Operating 10,000 ft. Non- operating 40,000 ft.
 Vibration: Three orthogonal axes at 1 octave/min, 5 min dwell at four major resonances at 0.75G peak, 5Hz to 500Hz.

Safety Regulatory & EMC Specifications:

MEETS FCC CLASS B, CISPR 22 CLASS B, EN55022 CLASS B – With an external Line filter – Please contact Factory
 EN61000-3-2 HARMONICS
 EN61000-3-3 VOLTAGE FLUCTUATION
 EN6000-4-2 ESD +8KV AIR +4KV CONTACT DISCHARGE, performance criteria B
 EN61000-4-3 RADIATED IMMUNITY: 80-1000Mhz 3V/m, AM 80% (1KHz), criteria A
 EN61000-4-4 FAST TRANSIENT: 1KV for AC power port, 0.5KV for DC power I/O and signals Port, performance criteria B
 EN61000-4-5 SURGE: 2KV common mode and 1KV differential mode
 EN61000-4-6 3VRMS, 80% A.M. BY 1kHz
 EN61000-4-8 3A /m at 50Hz, performance criteria A.
 EN61000-4-11 VOLTAGE Dips and interruption: 30% reduction for 10mSec –Criteria B, 60% For 100mSec. Criteria C, 95% reduction for 5000mSec Criteria C.

Dielectric Withstand:

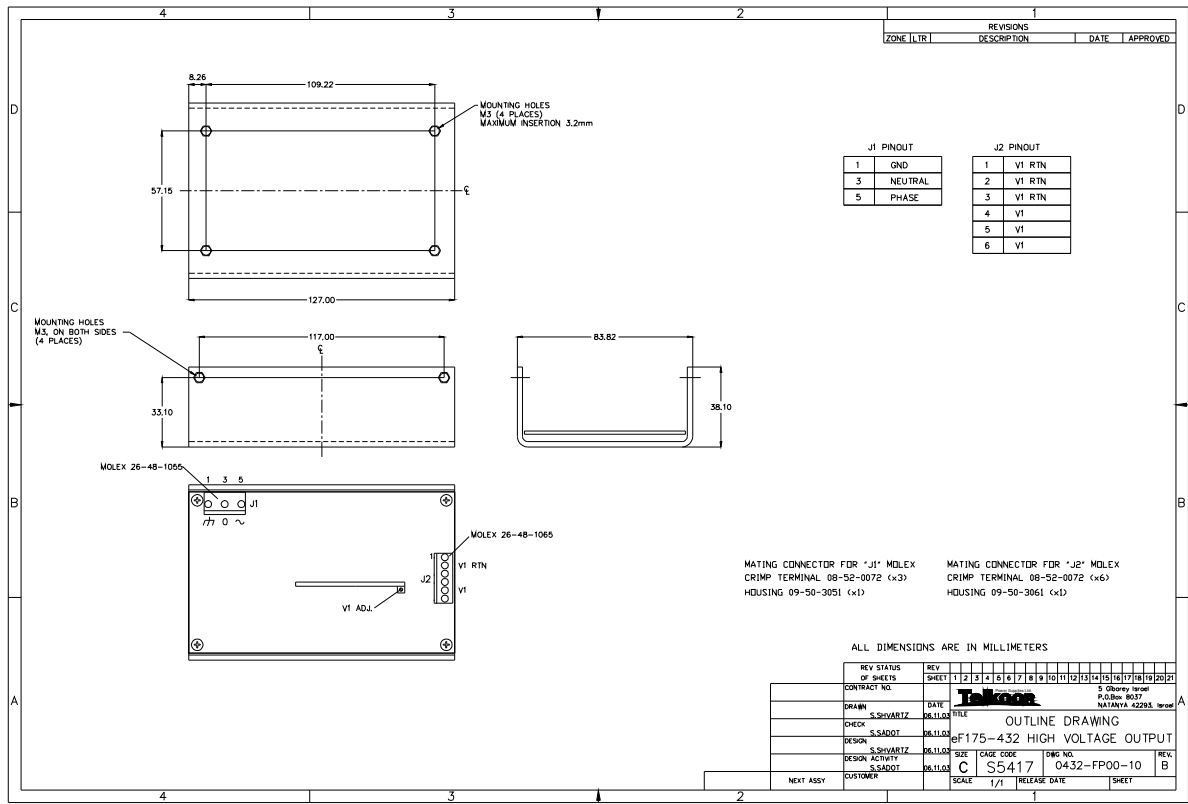
Input to Case: Input to case: 1500VAC.
 Input to Output: Input to output: 3000VAC
 Output to Case: Output to case: 100VDC.
 Safety Agency Compliance: UL 60950
 CSA C22.2 -234, LEVEL 3.
 EN-60950
 CE - MARK
 Leakage Current: 500uA @50/60 Hz, 264Vac input.
 MTBF: 300,000 hours minimum per BELCOR 332,issue 6 specification @30 degrees C (Max. junction temperature 110°C, Capacitors 105°C)

Mechanical Dimensions

Size 127mm x 84mm x 38.0mm
 Weight 650 Gr.
 Input AC Connector (J1) 3 Pin Molex 26-48-1055
 Output Connector V1 (J2) 6 Pin Molex Type 26-48-10xx

CUSTOMER	SIZE	CAGE CODE	S5417	DWG. NO.	0448-DOC1-10	REV	B1
GENERAL	SCALE	RELEASE DATE	1/12/05	SHEET	4	OF	5

Outline Drawing



CUSTOMER	SIZE	CAGE CODE	S5417	DWG. NO.	0448-DOC1-10	REV	B1
GENERAL	SCALE	RELEASE DATE	1/12/05	SHEET	5	OF	5