

**Electrical
Specification for:**

**TelkooR Part #:
Rev #:**

eF175-124
Wide range AC/DC Single Output 200W Power
Supply
900-0424-0000
C

CUSTOMER	SIZE	CAGE CODE	S5417	DWG. NO.	0424-DOC1-10	REV	C
GENERAL	SCALE		RELEASE DATE	1/10/04	SHEET	1	OF 5

Input :

Input Voltage: 90 – 264 V RMS

Frequency: 47-63Hz

Inrush Current: 25A max., cold start at 25°C, 120VAC
50A max., cold start at 25°C, 250VAC

Power Factor: 0.90 typical at 230Vac, full load
0.95 typical at 115Vac, full load

Efficiency: 86% typical at 230Vac, full load
82% typical at 115Vac, full load

Input Protection: Internal Line Fuse: IEC type 6.3A 250VAC

Brown - Out : 75 to 300Vac

Output Voltages and Currents

Output	Output voltage	Min. Load	Max. Load	Peak Load
V1	24V	0	8.2A	9..20A

Line Regulation: ±0.2% for Input Change from Vin(Min) to Vin (Max).

Load Regulation: ±0.4% for load change from zero to full load.

Ripple & Noise: 120 mVp-p Max. 20Mhz BW

Initial set point tolerance: Factory Pre-Set at +/-0.7%

Overshoot & Undershoot: Less than 1% at turn ON & OFF

Transient Load Response: ±5% Max. deviation for Step load of 25% to 75% I Max, at slew rate of 1A/usec, recovery time less then 500Msec.

Turn-on delay: 2 sec. Maximum.

Hold-Up Time: 16Msec minimum at full load

Turn-On Rise Time: 45Msec Max.

CUSTOMER	SIZE	CAGE CODE	S5417	DWG. NO.	0424-DOC1-10	REV	C
GENERAL	SCALE		RELEASE DATE	1/10/04	SHEET	2	OF 5

Over-current Protection: 110 to 155% of I Max, constant current limit, with automatic recovery.

Overvoltage Protection: Output shuts down at 125% of nominal output voltage AC input must be recycled to reset.

Temperature Protection: Shutdown due to excessive internal temperature 90 +/-5°C automatic recovery.

Current Share: N/A

Hot-Swap: N/A

Signals and Commands :

Inhibit: N/A

Power OK: N/A

Environmental Specifications :

Temperature Operating: -20°C to +50°C (de-rating linearly to 70 °C at 2.5%/C).
Storage: -45°C to +85°C.

Temperature Coefficient: 0 to 70°C ± 0.02%/°C

Cooling: 100W free convection cooling (base plate cooling).
200W (forced air cooling - 250 LFM)

Humidity: 5% to 95% RH non-condensing.

Altitude: Operating 10,000 ft. Non- operating 40,000 ft.

Vibration: Three orthogonal axes at 1 octave/min, 5 min dwell at four major resonances at 0.75G peak, 5Hz to 500Hz.

CUSTOMER	SIZE	CAGE CODE	S5417	DWG. NO.	0424-DOC1-10	REV	C
GENERAL	SCALE		RELEASE DATE	1/10/04	SHEET	3	OF 5

Safety Regulatory & EMC Specifications:

MEETS FCC CLASS B, CISPR 22 CLASS B, EN55022 CLASS B. With external line filter
 EN61000-3-2 HARMONICS
 EN61000-3-3 VOLTAGE FLUCTUATION
 EN6000-4-2 ESD +8KV AIR +4KV CONTACT DISCHARGE, performance criteria B
 EN61000-4-3 RADIATED IMMUNITY: 80-1000Mhz 3V/m, AM 80% (1KHz), criteria A
 EN61000-4-4 FAST TRANSIENT: 1KV for AC power port; 0.5KV for DC power I/O and signals port, performance criteria B
 EN61000-4-5 SURGE: 2KV common mode and 1KV differential mode.
 EN61000-4-6 3VRMS, 80% A.M. BY 1kHz
 EN61000-4-8 3A /m at 50Hz, performance criteria A.
 EN61000-4-11 VOLTAGE Dips and interruption: 30% reduction for 10mSec –Criteria B, 60% For 100mSec- Criteria C , 95% reduction for 5000mSec Criteria C.

Dielectric Withstand: Input to case: 2121 VDC.
 Input to output: 2121 VDC.
 Output to case: 250 VDC.

Safety Agency Compliance: UL 60950-1
 CSA C22.2 -234, LEVEL 3.
 EN-60950-1, CLASS 1, SELF CE – MARK

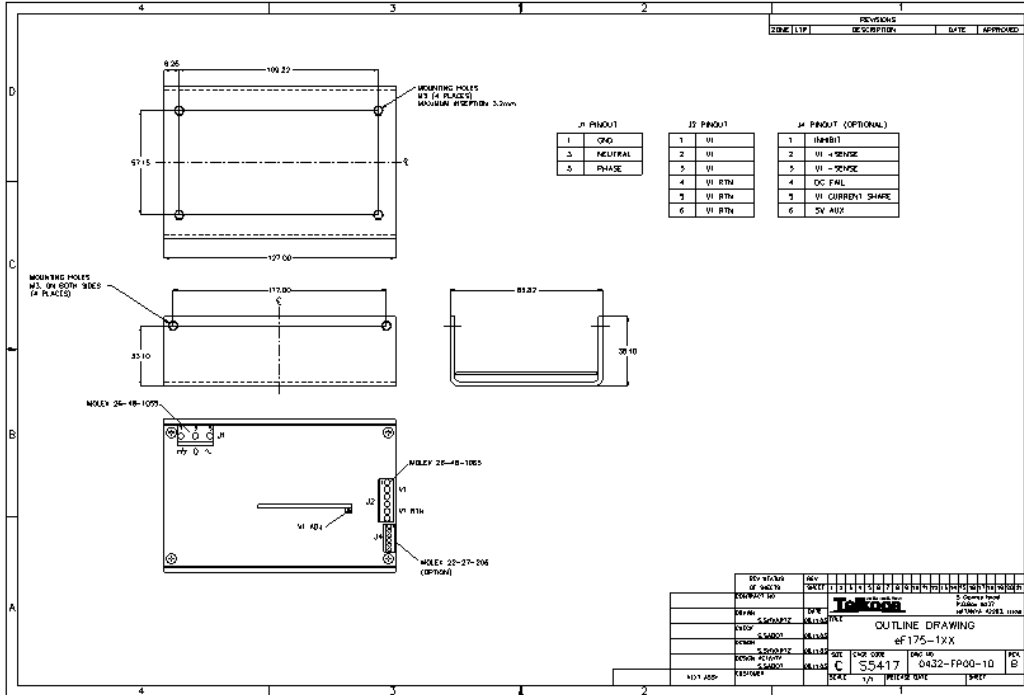
Leakage current: 1mA @50/60 Hz, 264Vac input.

MTBF: 300,000 hours minimum per BELCOR 332,issue 6 specification @30 degrees C. (Max. junction temperature 110°C, Capacitors 105°C)

Mechanical Dimension: Size – 127 x 84 x 38(mm) (3.3" x 5.0" x 1.5")
 Weight – 700 gr. Max. (26 oz)

CUSTOMER	SIZE	CAGE CODE	S5417	DWG. NO.	0424-DOC1-10	REV	C
GENERAL	SCALE		RELEASE DATE	1/10/04	SHEET	4	OF 5

Outline Drawing



CUSTOMER	SIZE	CAGE CODE	S5417	DWG. NO.	0424-DOC1-10	REV	C
GENERAL	SCALE	RELEASE DATE	1/10/04	SHEET	5	OF	5