

**Electrical
Specification for:**

Telkoor Part #:

Rev #:

eF175-131

Wide range AC/DC Single Output 200W Power
Supply

900-0431-0000

A

CUSTOMER	SIZE	CAGE CODE	S5417	DWG. NO.	431-DOC1-10	REV	
MARTIN PROFESSIONAL	SCALE	RELEASE DATE	1/1/06	SHEET	1	OF	

Input :

Input Voltage: 90 – 264 V RMS

Frequency: 47-63Hz

Inrush Current: 25A max., cold start at 25°C, 120VAC
50A max., cold start at 25°C, 250VAC

Power Factor: 0.90 typical at 230Vac, full load
0.95 typical at 115Vac, full load

Efficiency: 86% typical at 230Vac, full load
82% typical at 115Vac, full load

Input Protection: Internal Line Fuse: IEC type 6.3A 250VAC

Broun - Out : 75 to 300Vac

Output Voltages and Currents

Output	Output voltage	Min. Load	Max. Load	Peak Load
V1	32V	0	6.2A	7.20A

Line Regulation: $\pm 0.2\%$ for Input Change from Vin(Min) to Vin (Max).

Load Regulation: $\pm 0.4\%$ for load change from zero to full load.

Ripple & Noise: 150 mVp-p Max. 20Mhz BW

Initial set point tolerance: Factory Pre-Set at $\pm 0.7\%$

Overshoot & Undershoot: Less than 1% at turn ON & OFF

Transient Load Response: $\pm 5\%$ Max. deviation
for Step load of
25% to 75% I
Max, at slew rate of
1A/usec, recovery
time less then
500Msec.

Turn-on delay: 2 sec. Maximum.

Hold-Up Time: 16Msec minimum at full load

Turn-On Rise Time: 45Msec Max.

CUSTOMER	SIZE	CAGE CODE	S5417	DWG. NO.	431-DOC1-10	REV	
MARTIN PROFESSIONAL	SCALE	RELEASE DATE	1/1/06	SHEET	2	OF	

- Over-current Protection:** 110 to 155% of I Max, constant current limit, with automatic recovery
- Overvoltage Protection:** Output shuts down at 125% of nominal output voltage AC input must be recycled to reset.
- Temperature Protection:** Shutdown due to excessive internal temperature 90 +/-5°C automatic recovery.
- Current Share:** N/A
- Hot-Swap:** N/A
- Remote Sense:** N/A

Formatted

Signals and Commands :

- Inhibit:** N/A
- Power OK:** N/A

Environmental Specifications :

- Temperature** Operating: -5°C to +50°C (de-rating linearly to 70 °C at 2.5%/C).
Storage: -25°C to +85°C.
- Temperature Coefficient:** 0 to 70°C ± 0.02%/°C
- Cooling:** 100W free convection cooling (base plate cooling).
200W (forced air cooling - 250 LFM)
- Humidity:** 5% to 95% RH non-condensing.
- Altitude:** Operating 10,000 ft. Non- operating 40,000 ft.
- Vibration:** Three orthogonal axes at 1 octave/min, 5 min dwell at four major resonances at 0.75G peak, 5Hz to 500Hz.

CUSTOMER	SIZE	CAGE CODE	S5417	DWG. NO.	431-DOC1-10	REV	
MARTIN PROFESSIONAL	SCALE	RELEASE DATE	1/1/06	SHEET	3	OF	

Safety Regulatory & EMC Specifications:

MEETS FCC CLASS B, CISPR 22 CLASS B, EN55022 CLASS B. With external line filter

EN61000-3-2 HARMONICS
 EN61000-3-3 VOLTAGE FLUCTUATION
 EN60000-4-2 ESD +8KV AIR +4KV CONTACT DISCHARGE, performance criteria B
 EN61000-4-3 RADIATED IMMUNITY: 80-1000Mhz 3V/m, AM 80% (1KHz), criteria A
 EN61000-4-4 FAST TRANSIENT: 1KV for AC power port; 0.5KV for DC power I/O and signal port, performance criteria B
 EN61000-4-5 SURGE: 2KV common mode and 1KV differential mode.
 EN61000-4-6 3VRMS, 80% A.M. BY 1kHz
 EN61000-4-8 3A /m at 50Hz, performance criteria A.
 EN61000-4-11 VOLTAGE Dips and interruption: 30% reduction for 10mSec –Criteria B, 60 For 100mSec- Criteria C , 95% reduction for 5000mSec Criteria C.

Dielectric Withstand: Input to case: 2121 VDC.
 Input to output: 2121 VDC.
 Output to case: 250 VDC.

Safety Agency Compliance: UL 60950-1
 CSA C22.2 -234, LEVEL 3.
 EN-60950-1, CLASS 1, SELF CE – MARK

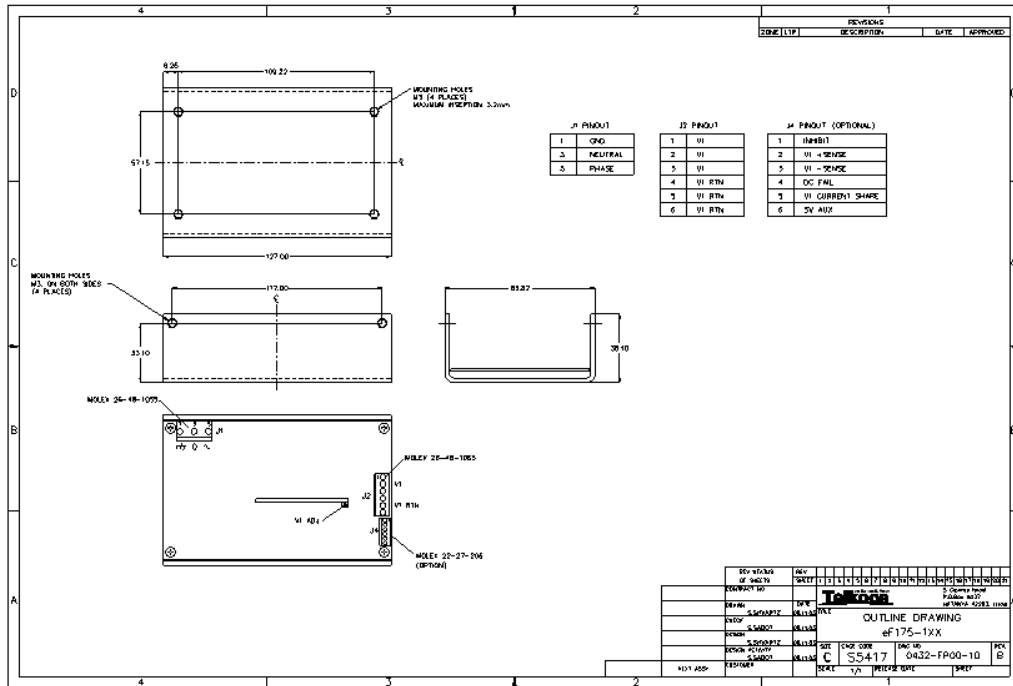
Leakage current: < 500µA @50/60 Hz, 264Vac input.

MTBF: 300,000 hours minimum per BELCOR 332, issue 6 specification @55 degrees C. (Max. junction temperature 110°C, Capacitors 105°C)

Mechanical Dimension: Size – 127 x 84 x 38(mm) (3.3" x 5.0" x 1.5")
 Weight – 700 gr. Max. (26 oz)

CUSTOMER	SIZE	CAGE CODE	S5417	DWG. NO.	431-DOC1-10	REV	
MARTIN PROFESSIONAL	SCALE	RELEASE DATE	1/1/06	SHEET	4	OF	

Outline Drawing



CUSTOMER	SIZE	CAGE CODE	S5417	DWG. NO.	431-DOC1-10	REV	
MARTIN PROFESSIONAL	SCALE	RELEASE DATE	1/1/06	SHEET	5	OF	