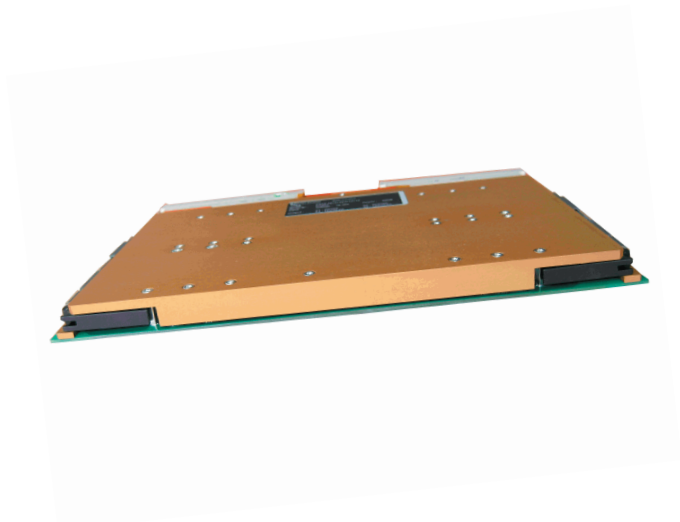




FEATURES

Defence COTS applications.
6U*4TE*160mm
INPUT : 24, 48, 170, 350Vdc
OUTPUT : 1 to 4 outputs 3V3 to 48Vdc
POWER : Up to 1000W
Efficiency : 86 % typ.
VME Conduction cooled



APPLICATIONS

Configurable DC/DC Eurocard for defence missile launcher, naval, land or avionic applications.
VME conduction cooled standard

INPUT

Voltage range :	24Vdcnom	Range : 18-36Vdc, operation at 16Vdc
	48Vdcnom	Range : 36-75Vdc
	170Vdcnom	Range : 110-200Vdc
	350Vdcnom	Range : 250-390Vdc
Input protection :	Fuse	
	transient and surges protected	
	EMI filtering MILSTD461	

OUTPUT

Voltage :	Up to 4 outputs 3V3 to 48Vdc fully configurable for series, parallel or independant operation.
Power :	Up to 1*1000W, 2*500W, 4*250W

SIGNALS / CONTROL

Input OK :	Open collector
Output OK :	Open collector for each output and green led in front panel
Output ajust :	50 to 110 % , factory adjustable
ON / OFF :	Inhibit for each output
Redundancy :	N+1