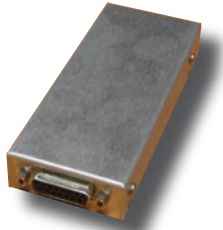




# FAB1206010

## DC/DC PCB board converter for military application



### Features

- 18-36Vdc Input voltage ranges
- 15V output up to 75W
- 120 \* 50 \* 20 mm, DSub 15pts connector
- Surge and transient protection
- Conduction cooled 95°C baseplate

Safety IEC/EN 60950-1, RoHS lead-free-solder compliant



The FAB1206010, very compact DC-DC converter in open frame chassis mount format, incorporate input filtering, input and output protections, very robust mechanical mounting and connection, conformal coating, required in most of the severe environment for military applications. The converter provides high reliability, high efficiency, input-to-output isolation, soft start, overtemperature protection, input over/undervoltage lockout. The outputs are continuously short-circuit proof. The 95°C baseplate operation allows operation in high temperature environment.

### Electrical Input Data

Input		24			Unit
Characteristics	Conditions	min	typ	max	
Operating input voltage		18		36	Vdc
Nominal input voltage			24		Vdc
Undervoltage lockout				15	V
Input current			4,1	7	A
No-load input power			2		W

### Electrical Output Data

Output		15V			Unit
Characteristics	Conditions	min	typ	max	
Output voltage			15		Vdc
Nominal output current			5		
Max. output current				5,5	
Output current limit				6	
Output noise			100		mVpp
Start up time			0,2		s

### Connector Pin Allocation

PIN	Dsub 15 points	
1	Vout+	Output +
2		
3		
4	Vout-	Output RTN
5	Vout-	Output RTN
6	VI-	Input RTN
7	VI+	Input +
8	Inhibit	Inhibit
9	Vout+	Output +
10	Vout+	Output +
11	Vout+	Output +
12	Vout-	Output RTN
13	Vout-	Output RTN
14	VI-	Input RTN
15	VI+	Input +

### Environmental & Mechanical

- Built to meet MIL STD 810E : Ruggedized with glue for the component, 95 % humidity with conformal coating.
- Vibration : 0,01g<sup>2</sup> 5-15Hz, 0,1g<sup>2</sup> 90Hz, 0,01g<sup>2</sup> 200Hz
- Shock : 6g
- Operating temperature : -55°C +95°C, baseplate
- Isolation : 100Vrms I/O, 100Vrms I/baseplate, 100Vrms O/baseplate
- Dimensions : 120 x 50 x 20mm, enclosed package

### E.M.I.

- Built to meet MIL STD 461E CE102
- Transient MIL STD 704A, MIL STD 1275A (100V/60ms)

### Protections

- Output overcurrent and short circuit
- Reverse input protection by fuse & parrallel diode

[www.powersystemtechnology.com](http://www.powersystemtechnology.com)

In partnership with

中国区总代理：上海佳舍珀电子科技有限公司 电话：021-61999334 | 手机：13764303579 | 电子邮件：roman.xiao@fitpower.cn | www.fitpower.cn