

**Electrical
Specification for:**

CPCI - 6U - AC -12V/ 600W

**Telkoor Part
Number:**

900-6012-0000

Approvals		
	Name	Date
Written by:	S. Sadot	25/10/2011
Engineering:	S. Sadot	25/10/2011
Sales & Marketing:	H.Liber	25/10/2011
Management:		

CUSTOMER: GENERAL	SIZE	CAGE CODE	S5417	DWG. NO.	6012-DOC1-10	REV	A
	SCALE	RELEASE DATE	25/10/2011	SHEET	1	OF	7

REVISION HISTORY					
Rev Level	Rev Date	Change Made	Reason for Change	Effective	Approved By
A	25/10/2011	Specification Release		25/10/2011	S . Sadot

CUSTOMER: GENERAL	SIZE	CAGE CODE	S5417	DWG. NO.	6012-DOC1-10	REV	A
	SCALE	RELEASE DATE	25/10/2011	SHEET	2	OF	7

±

Input:

Input Voltage: 85 - 264Vac, auto range, single phase
 Frequency: 47-63Hz
 Inrush Current: 50 A maximum at 230Vac
 Power Factor: 0.98 typical at 230Vac, full load
 0.99 typical at 115Vac, full load
 Efficiency >80% at 230Vac, full load rated power
 >76% at 120Vac, full load rated power
 Input Protection: Internal Line Fuse: IEC type, 8A 250Vac quick acting
 Brown – Out: 75 to 300Vac for 50Msec

Output Voltages & Currents:

<i>Output</i>	<i>Output Voltage</i>	<i>Adjustment Range</i>	<i>Output Current</i>	<i>Peak Current</i>
V1	+12V	11-13 V	50A	52A
V4	-12V	N.A	3A	3.5 A

Note: Maximum output power at any combination within this table is 400W

Output Power: 650W with 250LFM forced air cooling
 Line Regulation: ±0.5% % With minimum load of 3A on the output
 Load Regulation:
 V1 ±2%

Ripple & Noise 20 MHz bandwidth measured across 1uF ceramic and 120uF electrolytic.
 capacitor parallel
 V1 120mV p-p
 V4 120mV p-p

Overload & Short Circuit Protection Auto Recovery
 V1 ,V2 130% max

Initial Set Point Tolerance: ±1% on V1
 Overshoot & Undershoot: 0% at turn ON

Turn On Delay: 1 sec. Maximum.
 Over-voltage Protection: 110 to 130% with latched shut down
 Temperature Protection: System shutdown due to excessive internal temperature, automatic reset

CUSTOMER: GENERAL	SIZE	CAGE CODE	S5417	DWG. NO.	6012-DOC1-10	REV	A
	SCALE		RELEASE DATE	25/10/2011	SHEET 3	OF	7

Monitoring Command & Control

Remote Sense	Available on V1 Total voltage compensation for cable losses with respect to the main output 500mV
Inhibit (INH#)	Inhibited with GND or TTL "0" – Pulled up to internal +12V Aux supply
Enable (EN#)	Contact closure to external ground to start unit. On shortest pin (last make, first break)
Power Fail (FAL#)	Open collector - Active low signal .Indicates one or more outputs below 90% of specified rate.
Current Share	Accuracy of shared current ±10% with up to 6 parallel units. Single wire current share on V1 for 50% to 100% load
Hot Swap	Internal O-ring Diode FET's
Over Temperature Warning (DEG#)	Open collector active low about 10°C before power supply shut down.
I2C	Option
RoHS	In full compliance with the RoHS directive # 2002/69/EC

Operation Status Indicators

Input Voltage OK	Green LED - Indicates when mains input voltage is present.
Output Failure	Red LED - Indicates one or more outputs below 90% of specified rate.

Environmental Specification:

Operating Temperature:	Operation: -20°C to +55°C full load with 300LFM Forced Air Cooling and de-rating linearly above 55°C by 2.5% per °C
Storage Temperature	-40°C to +85°C
Humidity:	Up to 95% RH non-condensing.
Shock:	Peak acceleration 10GPK max.
Vibration:	Random vibration, 10Hz to 500Hz, 3 axis 1.9GRMS max.
Altitude	Operation 6K feet Non operation 40K feet
MTBF	400,000 hours per Bellcore standard B332 Gb 30°C

CUSTOMER: GENERAL	SIZE	CAGE CODE	S5417	DWG. NO.	6012-DOC1-10	REV	A
	SCALE	RELEASE DATE	25/10/2011	SHEET	4	OF	7

Safety Regulatory & EMC Specifications: DESIGNED TO MEET WITH FOLLOWING STANDARDS

Fully compliance to PICMG 2.11 CompactPCI Specification

Safety Agency Compliance	UL 60950 , EN-60950, CE - MARK
Harmonics	EN61000-3-2
Voltage Fluctuation	EN61000-4-3
ESD susceptibility	EN61000-4-2 level 4 8KV air
Conducted & radiated emission	EN55022/CISPR22 Class B with an external TBD line filter
Surge	EN6100 -4-5 level 3 line-to-line 1KV line to chassis 2KV
Radiated susceptibility	EN61000-4-3 level 3 10V/m
EFT/Burst	EN61000-4-4 level 3 ±2KV
Conducted disturbance	EN61000-4-6 level 2 3Vrms
RoHS	In full compliance with the RoHS directive # 2002/69/EC

Dielectric Withstand:

Input to Case:	1500VAC.
Input to Output:	3000VAC
Output to Case:	100VDC.

Mechanical Dimensions

Size	10.14"H X 1.60"W X 6.40"D (261.9mm x 40.34mm x 169.4mm)
Weight	1500 gr.

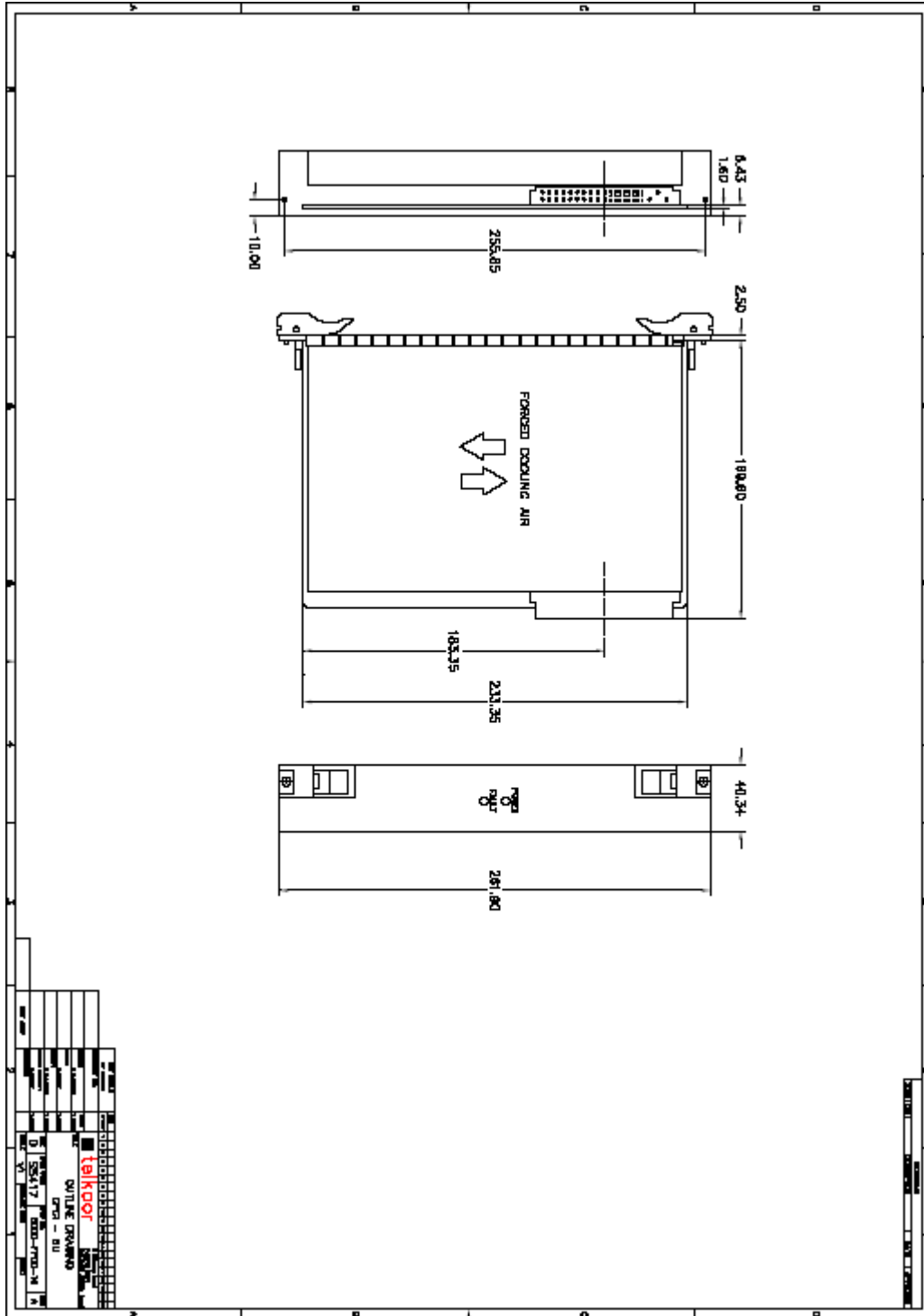
CUSTOMER: GENERAL	SIZE	CAGE CODE	S5417	DWG. NO.	6012-DOC1-10	REV	A
	SCALE		RELEASE DATE	25/10/2011	SHEET	5	OF 7

OUTPUT CONNECTOR – 47 pin
PIN ASSIGNMENT

Pin	Pin Type	Signal Name.	Description
1-4	Normal	V1	V1 and V2 , Output, 12V/50A
5-12	Normal	RTN	V1 and V2 Return
13-18	Normal	V1	V1 and V2 Output 12V/50A
19	Normal	RTN V3	V3 Return
20	Normal	V3 , NC	V3 Output , Not connected
21	Normal	V4	Output4V , -12V/3A
22	Normal	RTN	Signal Return
23	Normal	RTN	Signal Return
24	Normal	V4	V4 Return
25	Normal	GA-0	Geographic ADD-0 (option)
26	Normal	Reserve	Reserve
27	Short	EN#	Enable
28	Normal	GA-1	Geographic ADD-1 (option)
29	Normal	NC	Not Connected
30	Normal	V1 Sense	V1 Remote Sense
31	Normal	GA-2	Geographic ADD-2 (option)
32	Normal	NC	Not Connected
33	Normal	NC	Not Connected
34	Normal	S RTN	Sense Return
35	Normal	V1 Share	V1 Current Share
36	Normal	NC	Not Connected
37	Normal	IPMB_SCL	System Manager Bus (option)
38	Normal	DEG#	Degrade Signal
39	Normal	INH#	Open – ON Low - OFF
40	Normal	IPMB_SDA	System Manager Bus (option)
41	Normal	NC	Not Connected
42	Normal	FAL#	Fail Signal
43	Normal	IPMB_PWR	Power–System Manager (option)
44	Normal	NC	Not Connected
45	Long	Chassis GND	Chassis GND
46	Long	AC Neutral	AC input Neutral
47	Long	AC Line	AC Input Line

CUSTOMER: GENERAL	SIZE	CAGE CODE	S5417	DWG. NO.	6012-DOC1-10	REV	A
	SCALE		RELEASE DATE	25/10/2011	SHEET	6	OF 7

Outline Drawing:



CUSTOMER: GENERAL	SIZE	CAGE CODE	S5417	DWG. NO.	6012-DOC1-10	REV	A
	SCALE		RELEASE DATE	25/10/2011	SHEET	7	OF 7