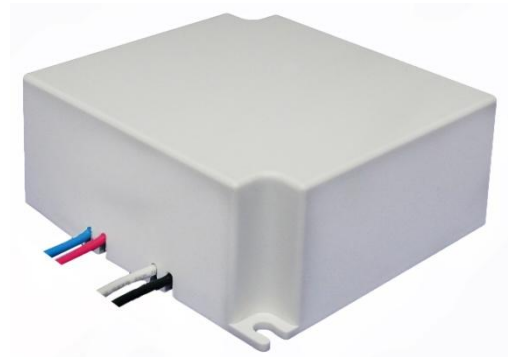
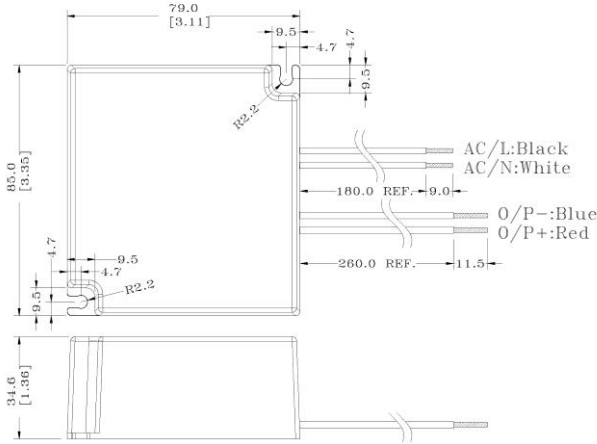


LDP040 Series-Wiring



Electrical specifications

Input

Voltage 90 - 305 Vac
 Current 1.3 Arms MAX.
 Frequency 47 - 63 Hz
 Power factor 90% MIN. (at 110Vac and 230Vac)
 Total harmonic distortion 20% MAX.
 Efficiency..... 80% minimum

Output

Voltage (Vo)..... (see table)
 Power (Po)..... 40W Max.
 Line regulation..... +/- 1%
 Load regulation..... +/- 5%
 Over voltage protection... Auto recover mode
 Over current protection.... 2 steps controlled current source
 Short circuit protection..... Built-in
 Ripple/Noise (mVpp)..... 2V Max. (20MHz bandwidth)

Output Electronic Specifications

Model#	Vo	Io	Po	CC
LDP040-120-00	12.0V	3.33A	40W	6~12V
LDP040-150-00	15.0V	2.66A	40W	7~15V
LDP040-240-00	24.0V	1.66A	40W	12~24V
LDP040-360-00	36.0V	1.11A	40W	18~36V
LDP040-480-00	48.0V	0.83A	40W	24~48V
LDP040-361-00	36.0V	700mA	25.2W	18~36V
LDP040-362-00	36.0V	1050mA	37.8W	18~36V
LDP040-481-00	48.0V	700mA	33.6W	24~48V

Features

- Plastic case for IP64
- Over voltage protection
- Over current protection
- PWM dimming option
- Constant voltage status (0~full amperage).
- Constant current status (as **CC** in table)
- Level B EMI filter
- High efficiency & High quality
- MTBF 100,000hrs min. at 25°C ambient

Environmental

Operating temperature

-20°C to +60°C ambient

Storage temperature

-20°C to +80°C ambient

EMI

FCC class B
 CISPR 22 class B

Safety

UL1310 for class 2



1580 North Kellogg Drive, Anaheim, CA 92807
 Tel: 714-917-0749 Fax: 714-917-0786 Website: www.jasperelectronics.com