



FEATURES

255 x 40 x 35 mm max.
Vin : 66-137Vdc ; 110V nominal
Output : 48Vdc
Pout max : 20W
Efficiency : 78,2% typical
RoHS compliant



APPLICATIONS

Power converter for fan mounted in railway applications. Built to meet EN50155.

INPUT

Voltage range : 66-137Vdc (154Vdc surge / 0,1s) (cf EN50155)
Input protection : Spikes transient
Overcurrent: by Fuse 5A

OUTPUT

Voltage : 48V / 0,42A (1 %)
Power : 20W no derating
Current limit : protected with constant power limit
1,5A @ 66 Vin
2,1A @ 110 Vin
Hold up time : 32ms

			Conditions
	Typ.	Max.	
Line regulation	0,22 %		Low line to high line ; Full load
Load regulation	0,5 %		0 % to full load
Ripple and noise	0,25 %		Peak to peak - Bandwidth 20MHz according to o/p voltage

SIGNALS

Tachy default : open collector
load connected to Vin and tachy-default

TRUTH TABLE	
ONE FAN FLOWS BELOW 1000rpm	TACHY_DEFAULT IS TIED TO 0V
ALL FANS FLOW MORE THAN 1000rpm	TACHY_DEFAULT IS HZ => (Vtachy_default = VIN)

Tachy -1 | fan speed control input compatible with PAPST signal /2 sensor
-2 |
-3 |

ENVIRONMENTAL

Storage temperature : -25°C to +85°C | 100 % max hygrometry
Operating temperature : -25°C to +85°C

EMI / EMC

EN55022 : Class A when floating or class B when grounded
No laboratory certification, certified in the customer equipment.

ISOLATION

Input or output to mounting holes : 500 Vdc

MECHANICALS

Built to meet EN61373 cat. 1 class B
 Components are glued
 Card is coated with tropical varnish.

CN1 : MRT5P -5.08/3

DESCRIPTION

+IN

0V

Tachy-default

CN2 : MRT5P -5.08/3

DESCRIPTION

48V

0V

Tachy 1

CN3 : MRT5P -5.08/2

DESCRIPTION

+48V

0V

CN4 : MRT5P -5.08/2

DESCRIPTION

Tachy 2

Tachy 3

Optional shunt between ground & mounting holes.

CN2

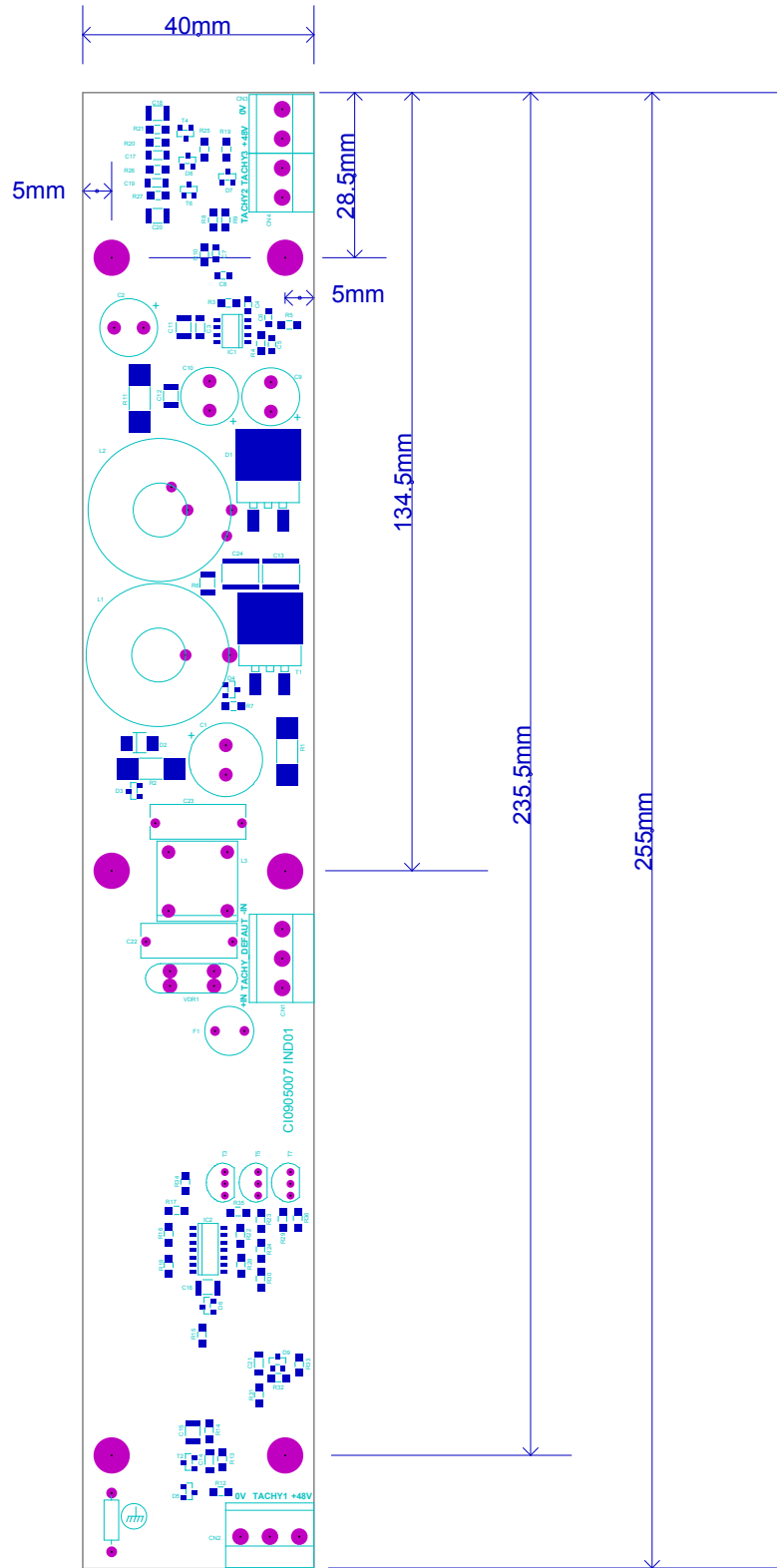
CN1

CN4

CN3



MECHANICALS



fixation : 6 trous diam 3,2mm