

# AUTOMATED ELECTROPHORESIS

## Experion™ Software

- Simultaneous display of electropherogram, gel view, and result table
- Automatic calculation of size, concentration, and percent of total sample for each peak
- Quick comparisons of protein or RNA components across all samples within a chip
- Multiple printing and data export options

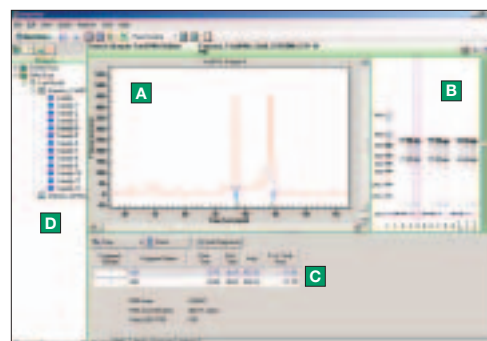
## Versatile and Functional Access to Automation

### Introduction

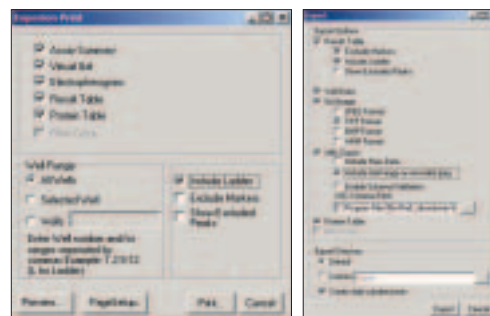
The Experion automated electrophoresis system delivers fast, high-resolution results for RNA and protein separations. Experion software optimizes this process by providing easy access to the setup, running, and data analysis functions of this innovative system. Experion software is your entryway to automation.

### Intuitive Access to Information

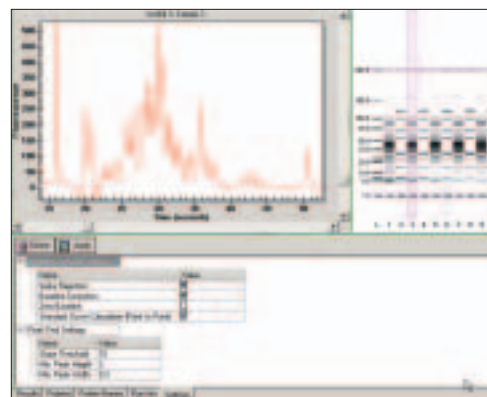
- Perform runs and analyze data from a single screen for efficient system control
- View separation data in simultaneous electropherogram (peak) and gel views
- Store, sort, and retrieve run data using the logical, flexible tree-view browser
- Print customized reports with information you select, including electropherogram or gel views and data from the result table
- Export results to a variety of useful formats, including spreadsheets, text, and XML, for further customized analysis and display
- Specify criteria for peak finding according to your experimental conditions or goals



Experion software provides easy access to the system and results with elements such as (A) electropherogram view, (B) gel view, (C) result table, and (D) tree-view browser.



Experion software allows custom printing and data export.



Changes can be made in the settings to optimize peak-finding criteria.

**BIO-RAD**



# Experience Meets Innovation

## Automated RNA Analysis

RNA sample quality and concentration are typically assessed before gene expression experiments are performed. Experion software displays separation profiles of RNA samples and automatically calculates the following information in a clear and easy-to-use format:

- Ribosomal RNA peak area and identity
- Concentration of total RNA and mRNA
- Percent of total sample for each peak
- Ribosomal RNA ratio, which indicates overall RNA quality and amount of degradation
- Comparisons of an RNA fragment across samples within a chip, which enable statistical analysis of an RNA fragment of interest

## Automated Protein Results

Experion software quickly provides accurate information about protein samples, automatically calculating and reporting the following:

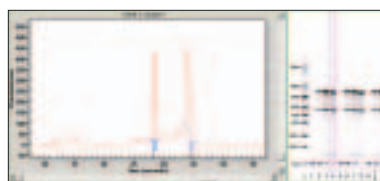
- Molecular weight and quantity of individual proteins
- Percent of total sample for each protein, which is useful for purity analysis
- Relative quantitation with the Experion Pro260 ladder
- Absolute quantitation with a user-added standard — designated in the software for automatic detection and calculation
- Comparisons of a single protein across samples within a chip, which enable statistical analysis

## Ordering Information

Catalog #	Description
700-7050	Experion Software, system operation and data analysis tools, PC



LabChip and the LabChip logo are trademarks of Caliper Life Sciences, Inc. Bio-Rad Laboratories, Inc. is licensed by Caliper Life Sciences, Inc. to sell products using the LabChip technology for research use only.



Experion software automatically calculates and displays RNA sample information.

Fragment	Area	Height	Width	Area %	Height %
1	100	100	100	100	100
2	100	100	100	100	100



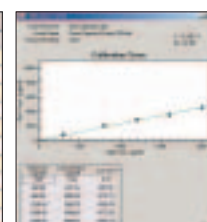
Protein molecular weight and concentration are automatically calculated by Experion software.

Sample	Area	Height	Width	Area %	Height %
1	100	100	100	100	100
2	100	100	100	100	100
3	100	100	100	100	100
4	100	100	100	100	100
5	100	100	100	100	100
6	100	100	100	100	100
7	100	100	100	100	100
8	100	100	100	100	100
9	100	100	100	100	100
10	100	100	100	100	100
11	100	100	100	100	100
12	100	100	100	100	100

RNA and protein tables allow user-selected comparisons of samples across a chip.

Sample	Area	Height	Width	Area %	Height %
1	100	100	100	100	100
2	100	100	100	100	100
3	100	100	100	100	100
4	100	100	100	100	100
5	100	100	100	100	100
6	100	100	100	100	100
7	100	100	100	100	100
8	100	100	100	100	100
9	100	100	100	100	100
10	100	100	100	100	100
11	100	100	100	100	100
12	100	100	100	100	100

World	Sample Name	Use for Calibration	Calo Conc (ug/ml)
1	Ladder	<input checked="" type="checkbox"/>	0
2	BCA	<input checked="" type="checkbox"/>	2.5
3	BCA	<input checked="" type="checkbox"/>	500
4	BCA	<input checked="" type="checkbox"/>	1000
5	BCA	<input checked="" type="checkbox"/>	1600
6	BCA	<input checked="" type="checkbox"/>	2000
7	Sample 1	<input type="checkbox"/>	0
8	Sample 2	<input type="checkbox"/>	0
9	Sample 3	<input type="checkbox"/>	0
10	Sample 4	<input type="checkbox"/>	0



Experion software allows designation of user-added protein standards for absolute quantitation.

**BIO-RAD**

**Bio-Rad  
Laboratories, Inc.**

Life Science  
Group

**Web site** [www.bio-rad.com](http://www.bio-rad.com) **USA** (800) 4BIORAD **Australia** 02 9914 2800 **Austria** (01)-877 89 01 **Belgium** 09-385 55 11 **Brazil** 55 21 2527 3454 **Canada** (905) 712-2771 **China** (86-21) 63052255 **Czech Republic** + 420 2 41 43 05 32 **Denmark** 44 52 10 00 **Finland** 09 804 22 00 **France** 01 47 95 69 65 **Germany** 089 318 84-0 **Hong Kong** 852-2789-3300 **Hungary** 36 1 455 8800 **India** (91-124)-6398112/113/114, 6450092/93 **Israel** 03 951 4127 **Italy** 39 02 216091 **Japan** 03-5811-6270 **Korea** 82-2-3473-4460 **Latin America** 305-894-5950 **Mexico** 55-52-00-05-20 **The Netherlands** 0318-540666 **New Zealand** 64 9 415 2280 **Norway** 23 38 41 30 **Poland** + 48 22 331 99 99 **Portugal** 351-21-472-7700 **Russia** 7 095 721 1404 **Singapore** 65-6415 3188 **South Africa** 00 27 11 4428508 **Spain** 34 91 590 5200 **Sweden** 08 555 12700 **Switzerland** 061 717-9555 **Taiwan** (8862) 2578-7189/2578-7241 **United Kingdom** 020 8328 2000