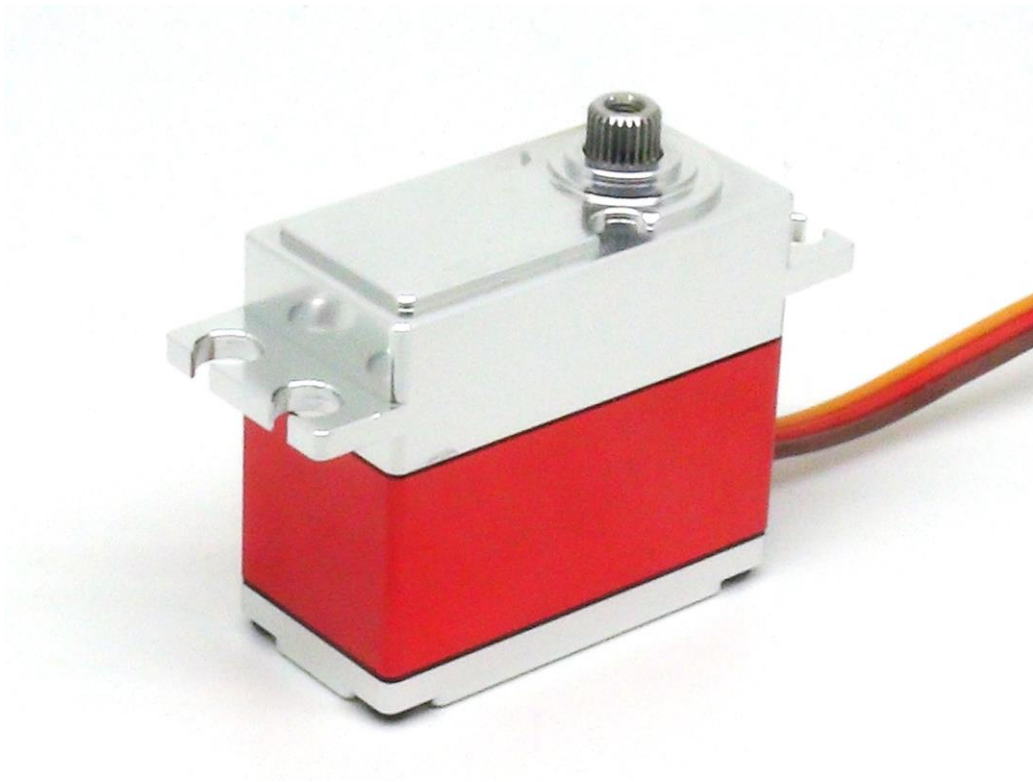
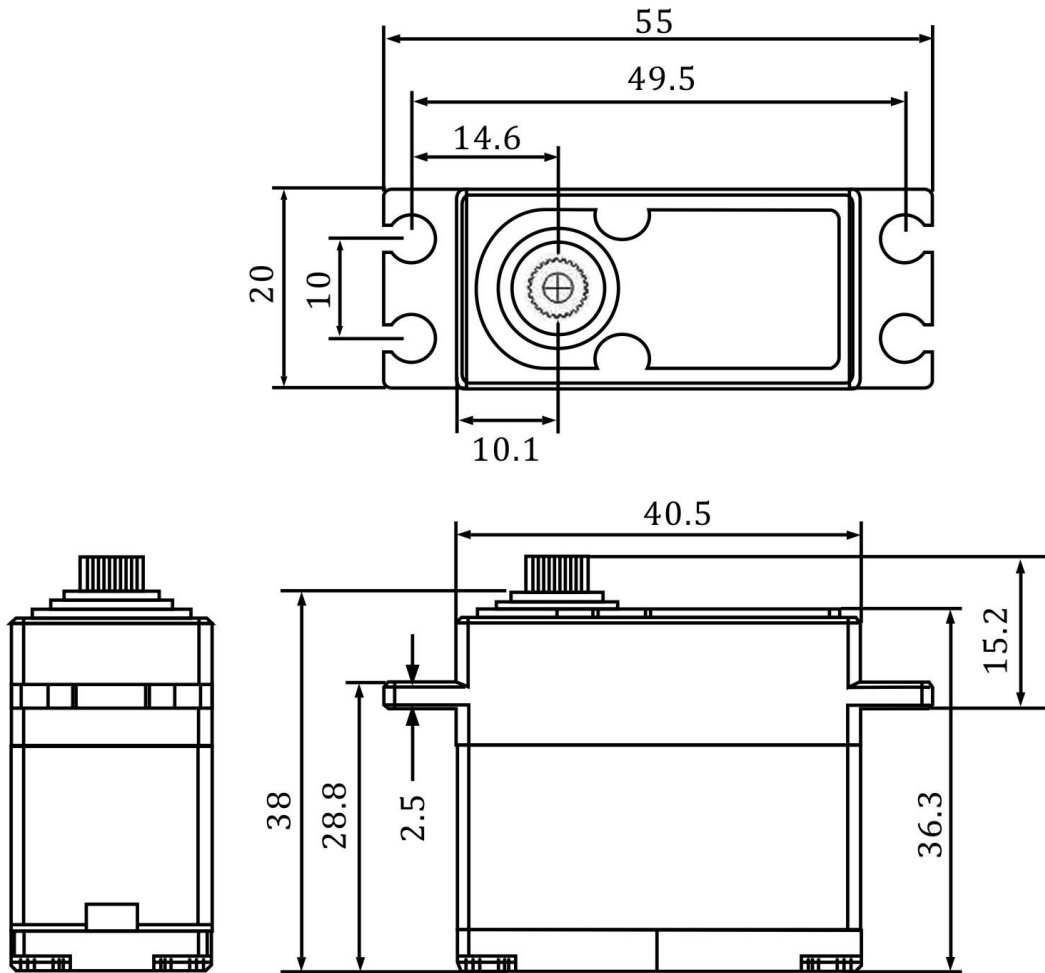


FZ835

Technical Specification



1. Installation Dimensions



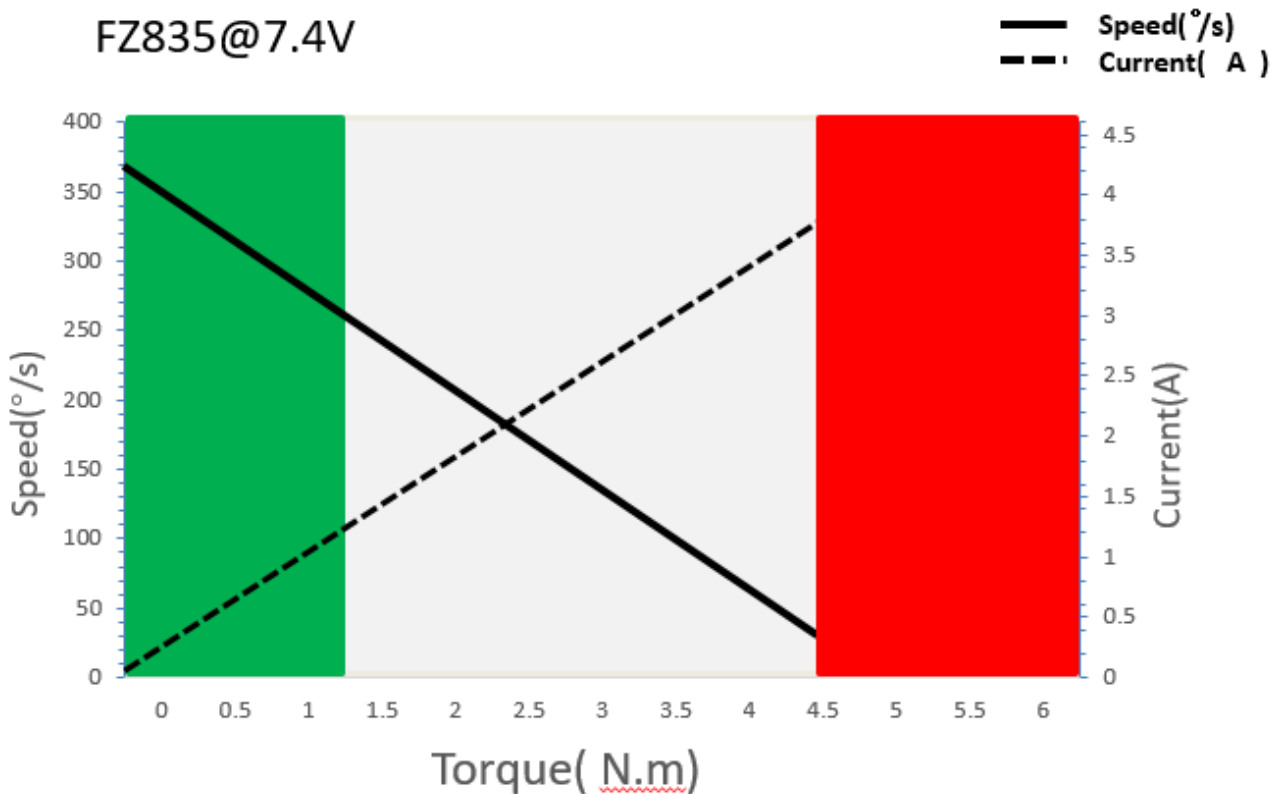
Case Dimensions	40.5*20*38mm ±0.2mm
Weight	70g ±10%

2. Operating Data

Operation Voltage(rated)	DC7.4V
Operation Voltage Range	DC6.0V-8.4V
Torque	36Kg.cm@6.0V
	45Kg.cm@7.4V
	50Kg.cm@8.4V
Speed	0.18sec/60 °@6.0V
	0.16sec/60 °@7.4V
	0.15sec/60 °@8.4V
Travel Angle	± 50° when 1000-2000us
Operating Temperature Range	-20℃……+65℃

3. Performance

FZ835@7.4V



Operation Model:

■ Continuous
 ■ Short Time<10s Repeat
 ■ <1s,60s Cool

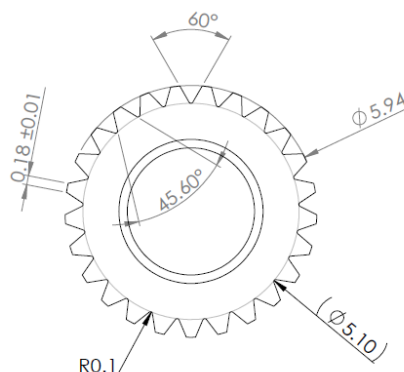
4. PWM Command Signal

Signal Voltage	TTL-Level: HIGH:min.3.3V,max.5.0V TTL-Level: Low:min.0.0V,max.1.5V
Pulse Lengths	1000-2000us
Pulse Lengths for Position -50° / 0° / $+50^{\circ}$	1000us/1500us/2000us
Resolution	<2us

5. Materials and protective features

Case Material	Aluminum Alloy
Motor Type	Coreless
Gear Set Material	Hardened Steel
Position Sensor	Potentiometer
Position Feedback	Optional
Shielded Connecting Cable	22AWG

6. Output Shaft Spline (25T)



7. Electrical Connection

	Pin Assignment			
	1	Yellow	SIG	Command Signal
	2	Red	+V DC	Supply Voltage
	3	Brown	GND	Supply Ground, Signal Ground