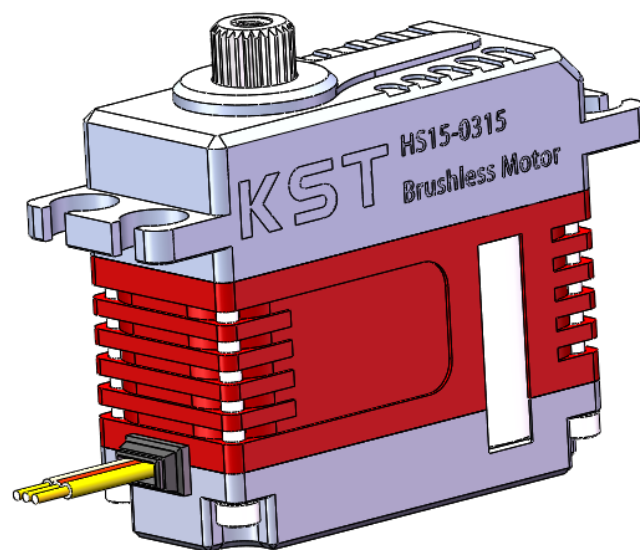


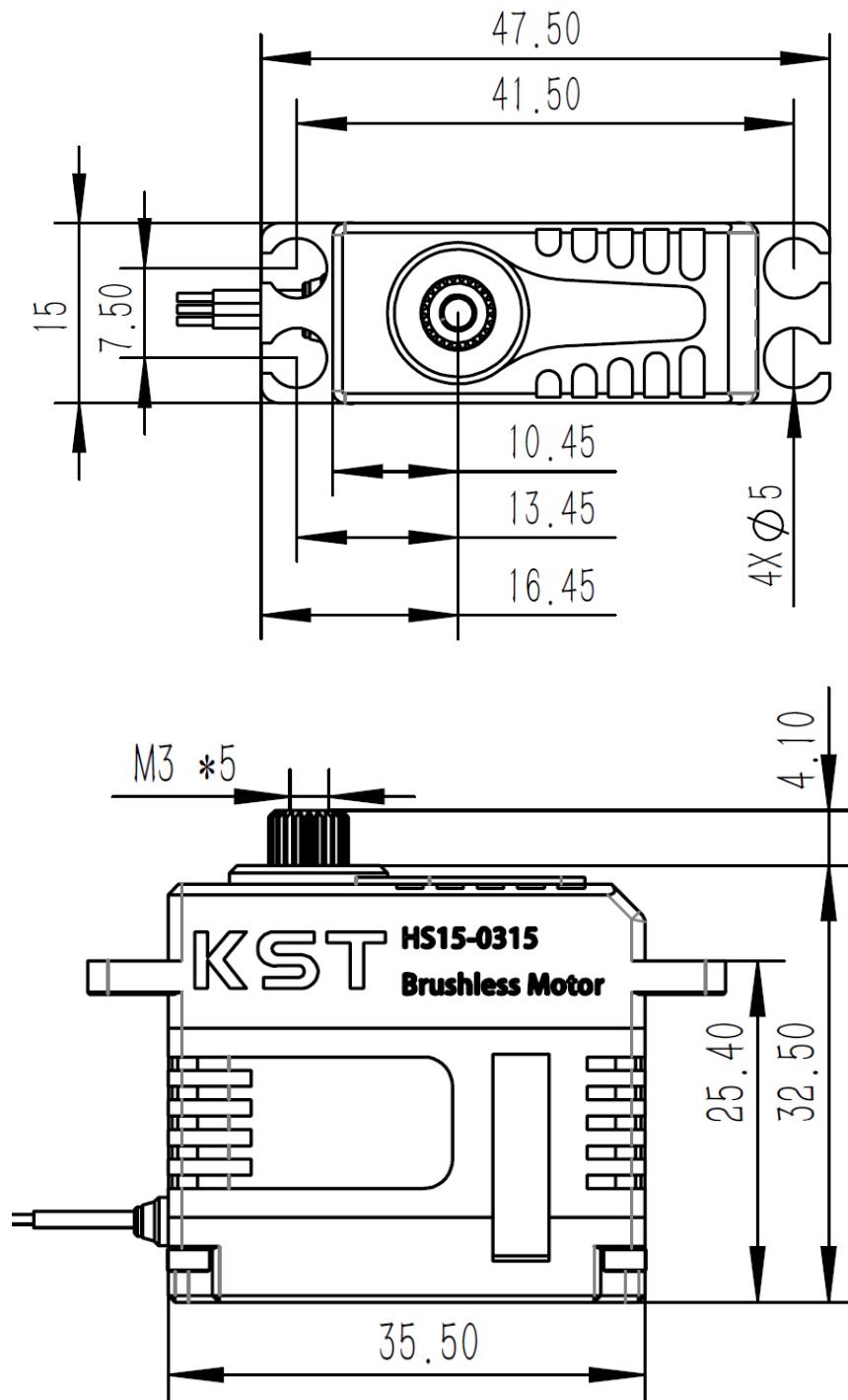
HS15-0315

Technical Specification



HS15-0315

1. Installation Dimensions

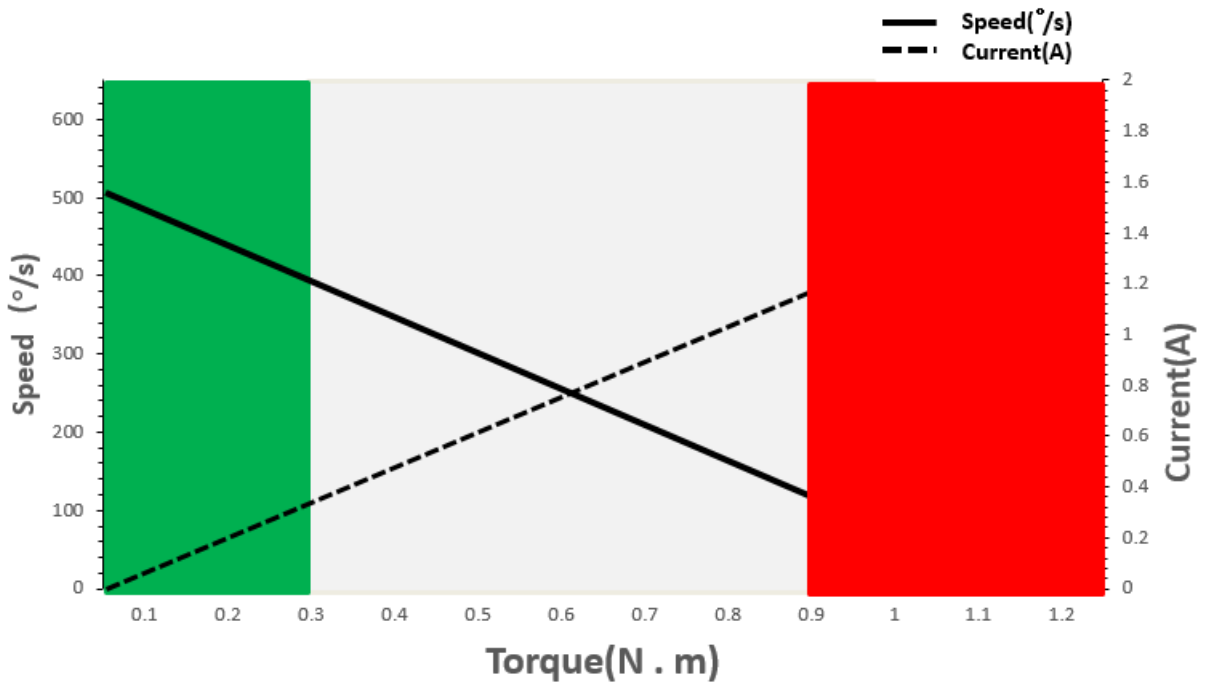


Case Dimensions	35.5mm*15mm*32.5mm
Weight	42g

2. Operating Data

Operation Voltage(Rated)	DC7.4V
Operation Voltage Range	DC6.0V-8.4V
Rated Torque	0.3N.m@7.4V
Stalling Torque	0.9N.m@7.4V
No-load Speed	0.12sec/60°@7.4V
Rated Speed	0.15sec/60°@7.4V
Travel Angle	±50° when 1000us-2000us
	±100° when 500us-2500us
Operating Temperature Range	-20°C.....+65°C

3. Performance



Operation Model:

■ Continuous
 ■ Short Time<10s Repeat
 ■ <1s,60s Cool

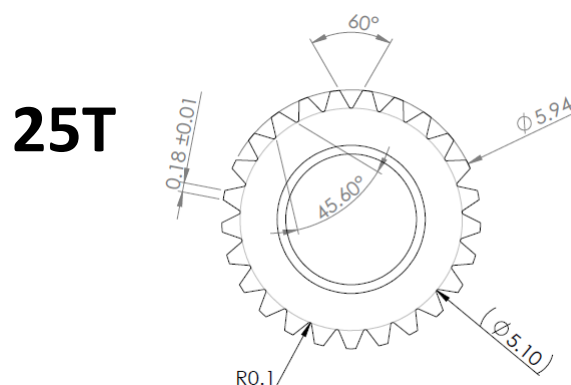
4. PWM Command Signal

PWM	HS15-0315
Signal Voltage	TTL-Level: HIGH:min.3.3V,max.5.0V TTL-Level: Low:min.0.0V,max.1.5V
Pulse Lengths	500us - 2500us
Pulse Lengths for Position -100°/center/+100°	500us/1500us/2500us
Gear backlash	≤0.5°


5. Materials and protective features

Case Material	Aluminum Alloy
EMI/RFI Shielding	Shielding
Motor Type	Brushless
Gear Set Material	Hardened Steel
Position Sensor	Potentiometer
Connecting Cable	26AWG

6. Output Shaft Spline



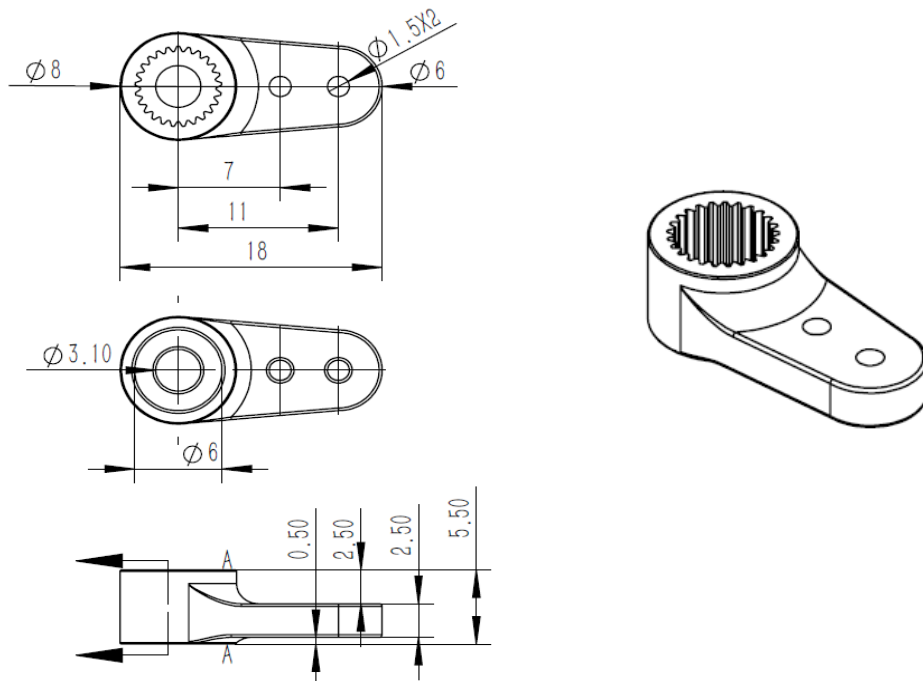
7. Electrical Connection

 <p>3 2 1</p>	Pin Assignment			
	1	Yellow	SIG	Command Signal
	2	Red	+V DC	Supply Voltage
3	Brown	GND	Supply Ground, Signal Ground	

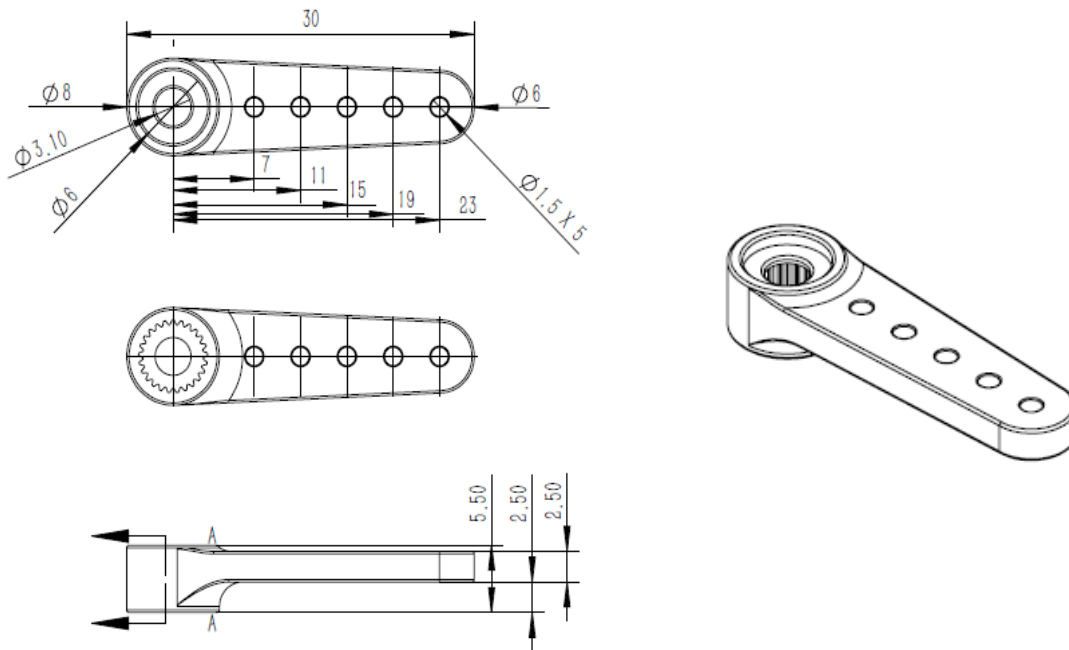
8. Accessories (Optionals)

Item	Item-No.
Aluminum Servo Arm (Single side)	0625.11
Aluminum Servo Arm (Single side)	0625.23
Aluminum Servo Arm (Single side)	0625.40
Aluminum Servo Arm (Double side)	0625.60

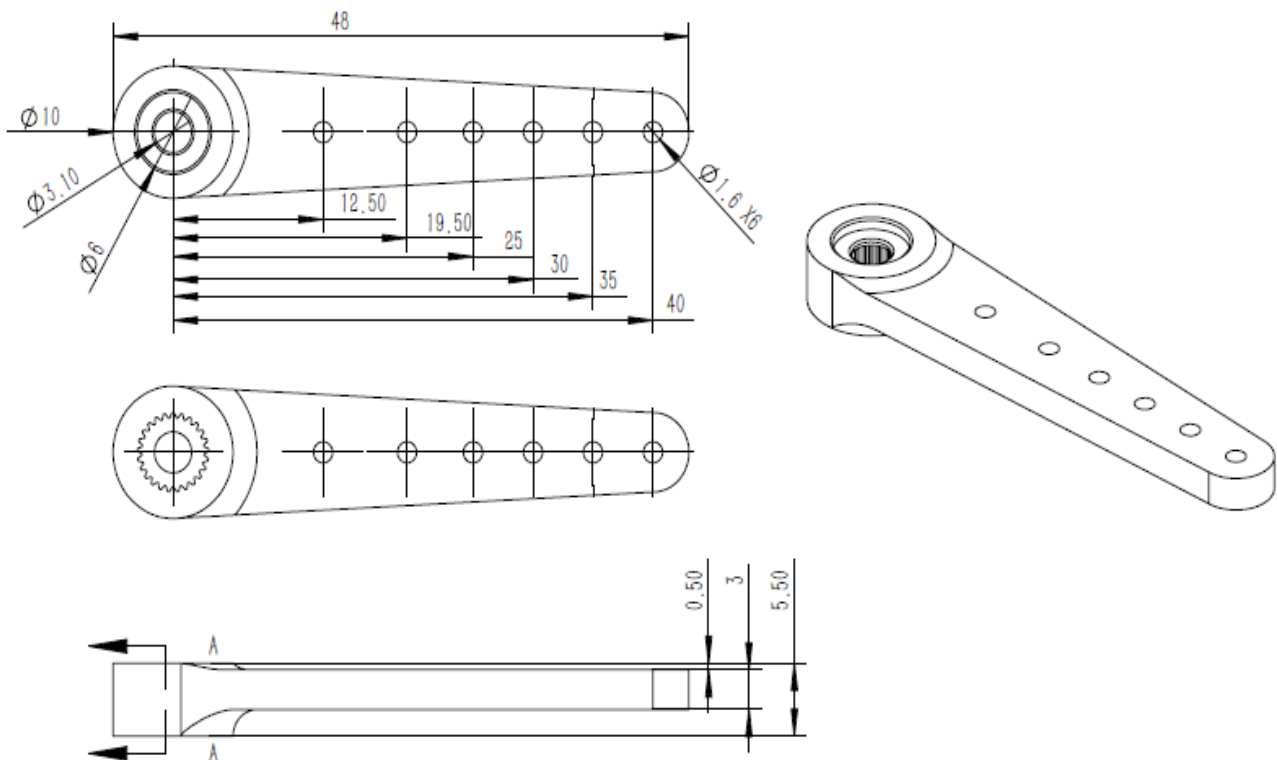
Item# 0625.11



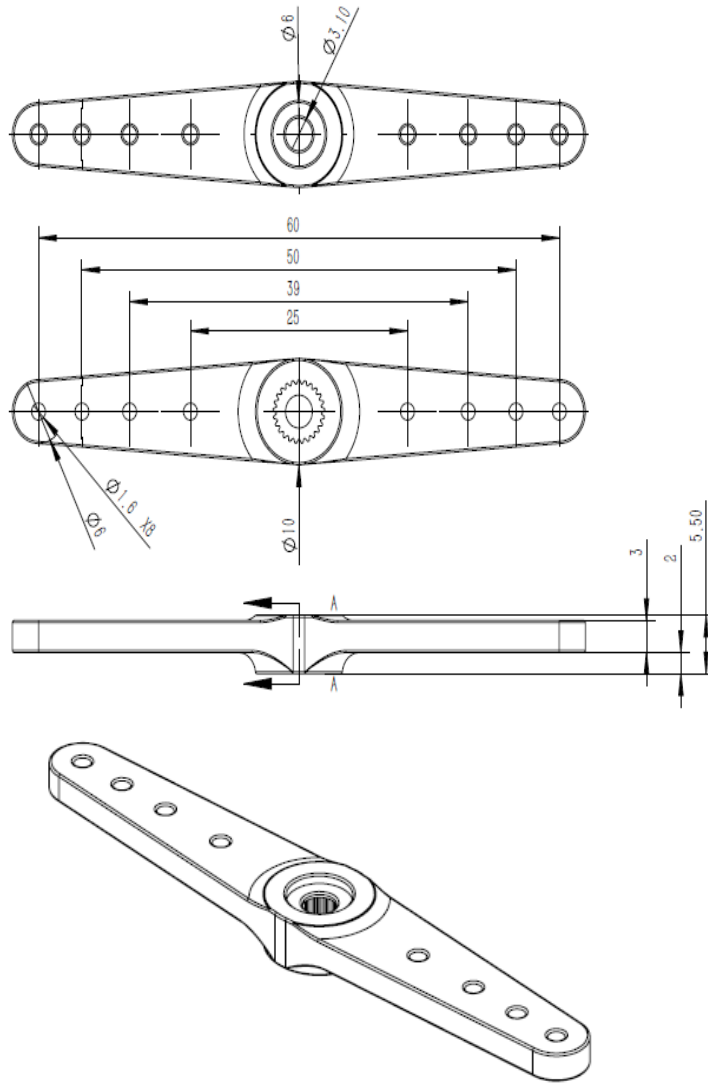
Item# 0625.23



Item# 0625.40



Item# 0625.60



9. Item Number System

HS15 - 0315	
Servo Class	Performance
15mm Class	03: Rated Torque (0.3N.m)
	15: Rated Speed (0.15Sec/60°)