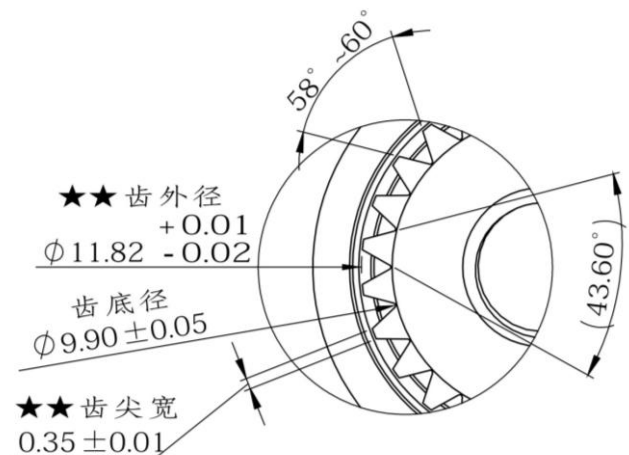
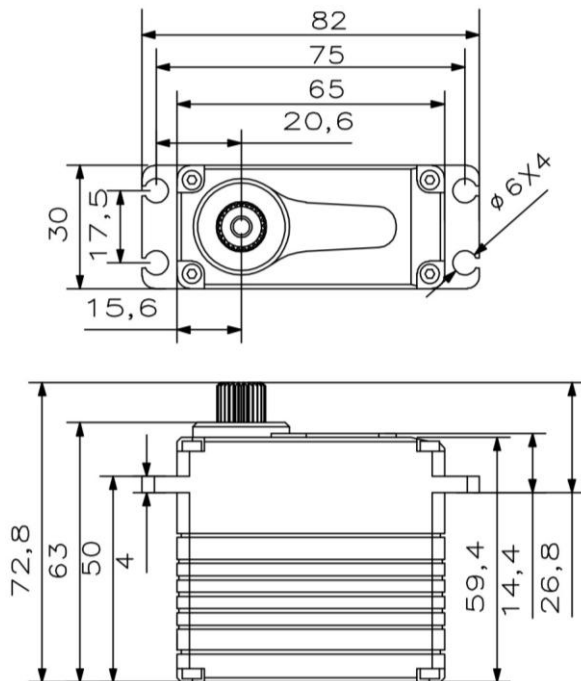


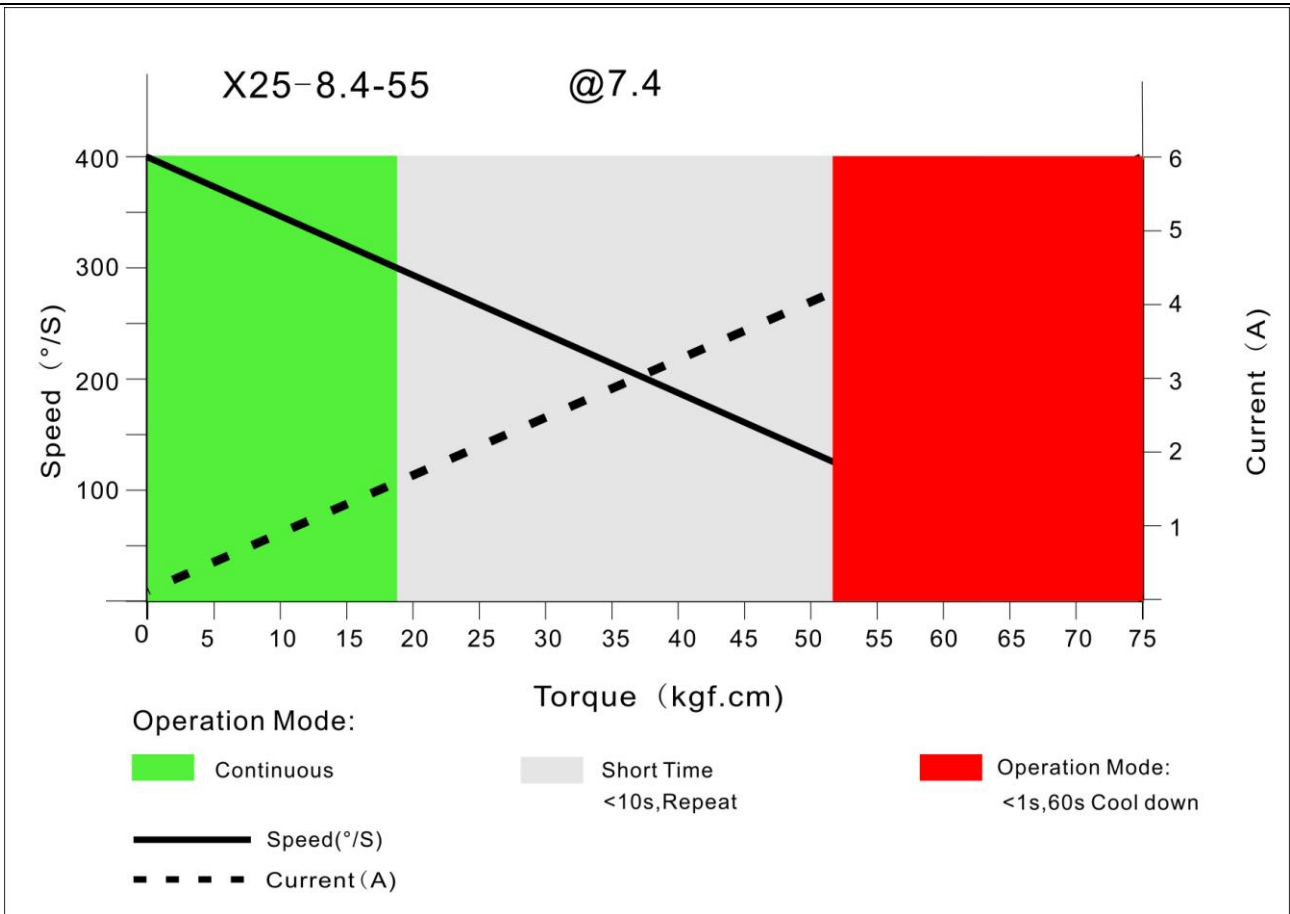
X25-8.4-55

Technical Specification



Operating Data

| | X25-8.4-55 |
|------------------------------------|------------------------------|
| Operation Voltage(rated) | DC7.4V |
| Operation Voltage Range | DC6.0-8.4V |
| Torque | 48Kg.cm@6.0V |
| | 52Kg.cm@7.4V |
| | 55kg.cm@8.4V |
| Speed | 0.18sec/60°@6.0V |
| | 0.15sec/60°@7.4V |
| | 0.12sec/60°@8.4V |
| Travel Angle | ±50° when 1000-2000us |
| Operating Temperature Range | -10℃……+55℃ |
| | -40℃……+65℃ (optional) |



PWM Command Signal

| PWM | X25-8.4-55 |
|--|---|
| Signal Voltage | TTL-Level: HIGH:min.3.3V,max.5.0V TTL-Level: Low:min.0.0V,max.0.5V |
| Pulse Lengths | 900-2100us |
| Pulse Lengths for Position -50° /center/+50° | 1000us/1500us/2000us |
| Resolution | <2us |

Materials and protective features

| | |
|---------------------------|---------------------|
| Case Material | Aluminum Alloy 7075 |
| Splash Surface Treatment | |
| Salt Water Resistance | |
| EMI/RFI Shielding | |
| Motor Type | Coreless |
| Gear Set Material | Hardened Steel |
| Position Sensor | Potentionmeter |
| Position Feedback | Optional |
| Shielded Connecting Cable | |

Dimensions

| | |
|-----------------|------------|
| Case Dimensions | 65*30*63mm |
| Weight | 270g |

舵臂尺寸图

