

# 0161/0162

## Diaphragm/piston pressure switches 250 V

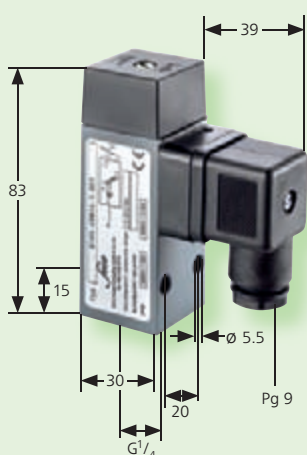
Aluminium body  
 With changeover switch and silver contacts  
 Max. voltage 250 V  
 Overpressure safe to 200/600 bar <sup>1)</sup>  
 With connector plug similar to DIN EN 175301 (DIN 43650)  
 Adjustable hysteresis at works

- See page 7 for electrical properties



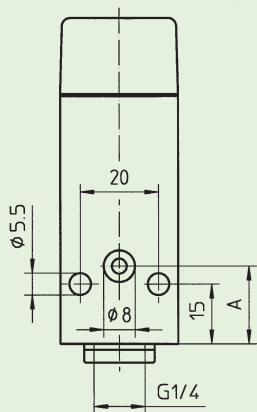
### 0161

With female thread

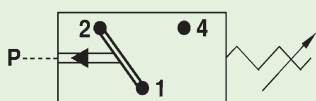


### 0162

Manifold mounting



- Also available with switching point preset in our works.



- For further technical data see page 38

### Diaphragm pressure switches

Adjustment range in bar	Tolerance in bar (room temperature)	Dim."A" in mm	P <sub>max.</sub> in bar	0161		0162 <sup>2)</sup>	
				Female thread G 1/4	Manifold mounting		
0.5 – 1	± 0.2	15	200 <sup>1)</sup>	0161 436 14	001	0162 436 14	001
0.5 – 5	± 0.2 – 0.5			0161 437 14	001	0162 437 14	001
1 – 10	± 0.5			0161 438 14	001	0162 438 14	001
10 – 50	± 3.0			0161 439 14	001	0162 439 14	001
50 – 100	± 3.0 – 5.0			0161 440 14	001	0162 440 14	001

### Piston pressure switches

Adjustment range in bar	Tolerance in bar (room temperature)	Dim."A" in mm	P <sub>max.</sub> in bar	0161		0162 <sup>2)</sup>	
				Female thread G 1/4	Manifold mounting		
100 – 400	± 5.0 – 9.0	19.5	600 <sup>1)</sup>	0161 441 14	001	0162 441 14	001

**Order number**  
 Add figure for diaphragm/  
 seal material

0161 XXX XX **X** XXX 0162 XXX XX **X** XXX

<b>NBR</b>	Hydraulic / machine oil, turpentine, heating oil, air etc.	=	<b>1</b>	=	<b>1</b>
<b>EPDM</b>	Brake fluid, ozone, acetylene, hydrogen etc.	=	<b>2</b>	=	<b>2</b>
<b>FKM</b>	Hydraulic fluids (HFA, HFB, HFC, HFD), petrol/gasoline etc.	=	<b>3</b>	=	<b>3</b>
<b>See page 38 for temperature ranges of diaphragm/seal materials</b>					

<sup>2)</sup> 0162 Diaphragm pressure switches: scope of supply includes O-ring NBR 5 x 1.5

### Warning!

When using with oxygen, the relevant accident-prevention regulations must be observed. In addition, we recommend that a maximum operating pressure of 10 bar is not exceeded.

Piston-type pressure switches are only to a limited extent suitable for use with gases and oxygen. See explanation on page 5.

<sup>1)</sup> Static pressure, dynamic pressures should be 30 to 50% lower. These values refer to the hydraulic or pneumatic part of the pressure switch.

### Degree of protection IP65

The type approval does not apply without restriction to all environmental conditions. It is the responsibility of the user to check whether the connection complies with regulations other than those stated, and whether it can be used for special applications which could not be foreseen by us in advance.