

DP01

Paddle-type flow switch

- With and without T fitting, for piping from 1/4" to 6"
- Constructed of brass, stainless steel and with T fitting of PVC
- Upper part with T fitting can be removed, allowing cleaning or replacement without requiring readjustment
- Causes only slight pressure loss
- Available with reed contact or microswitch
- Switching function depends only on flow, not on pressure and temperature of fluid



Description:

The flow switches model DP01 operate according to the paddle principle. The flowing liquid pushes against the surface area of a paddle mounted at the end of a pivoting arm. The dynamic pressure against the plate deflects the arm. This motion causes a permanent magnet attached on the other end of the arm to switch an adjustable reed contact located outside the liquid being monitored. By moving the reed contact, different switching points can be set.

Fields of application:

The DP01 paddle flow switch is suitable for monitoring the switching point of low-viscosity liquids. The switching point is normally set as required for the specific process. However, fixed switching points for increasing or decreasing flow rate can also be preset at the factory, if necessary.

Designs, switching ranges and dimensions:

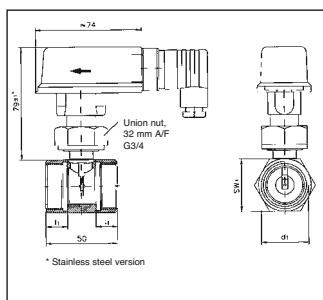
Nominal size (DN)	Connection (G)	Switch on at (l/min H ₂ O)	Switch off at (l/min H ₂ O)	Max. flow rate (l/min H ₂ O)	I ₁ (mm)	Size A/F 1 brass (mm)	Size A/F 1 stainless steel (mm)
DP01.1: with brass or stainless steel T fitting and reed contact							
8	1/4	2.1...2.7	1.8...2.4	45	11	27	27
10	3/8	2.5...3.2	2.2...2.9	60	11	19	27
15	1/2	3.4...4.2	3.0...3.8	67	11	19	27
20	3/4	7.0...9.1	6.4...8.2	180	15	27	32
25	1	13.5...17	12...15.5	195	15	32	41
32	1 1/4	15.5...20.5	14.5...19	240	15	46	46
40	1 1/2	26.5...34.5	25.5...32.5	400	15	55	55
50	2	39.5...51	39...50	400	15	70	70

DP01.2: with PVC T fitting and reed contact				I ₁ (mm)	l (mm)	h (mm)
15	DN15	5.1...6.9	4.9...6.5	50	16	54
20	DN20	9.4...12.3	9.1...11.9	100	19	66
25	DN25	10.7...15.2	10.4...14.8	100	22	78
32	DN32	17.0...22.6	16.8...22.5	150	26	98
40	DN40	21.8...30.1	21.6...40.8	200	31	118
50	DN50	29.0...40.0	28.6...49.8	260	38	144

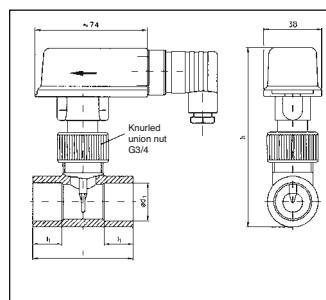
Nominal size (DN)	Connection (G)	Switch off at (l/min H ₂ O)	Max. flow rate (m ³ /h H ₂ O)	l (mm)	H (mm)
DP01.3: with brass T fitting and microswitch					
10	3/8 female thread	4.0...5.0	10	50	85.5
15	1/2 female thread	5.0...6.0	20	50	85.5
15	1/2 male thread	4.0...5.0	20	60	85.5
20	3/4 female thread	8.0...10.0	40	50	85.5
25	1 female thread	17.0...20.0	60	50	92.5
32	1 1/4 female thread	24.0...28.0	100	50	95
40	1 1/2 female thread	43.0...50.0	150	50	97.5
50	2 female thread	69.0-83.0	250	50	108

Nominal size (DN)	Switch on at (l/min H ₂ O)	Switch off at (l/min H ₂ O)	Max. flow rate (l/min H ₂ O)	I ₃ (mm)
DP01.4: without T fitting, 1/2" male thread, installation length 51 mm, reed contact				
50	1.9...2.7	1.8...2.6	30	51 +/- 1
80	5.0...8.0	4.9...7.9	80	51 +/- 1
100	8.3...12.5	8.2...12.4	150	51 +/- 1
150	17.5...25.0	17.4...24.9	200	51 +/- 1
DP01.5: without T fitting, 1/2" male thread, installation length, reed contact				
100	5.7...6.3	5.6...6.2	100	111 +/- 1
150	11.0...13.0	10.9...12.9	150	111 +/- 1
200	25.0...27.0	24.9...26.9	200	111 +/- 1
DP01.6: without T fitting, soldering or welding nipple, installation length 24 mm, reed contact				
50	3.8...4.9	3.7...4.8	30	24 +/- 1
80	9.0...14.3	8.9...14.2	100	24 +/- 1
100	13.0...18.8	12.7...18.4	150	24 +/- 1
150	33.0...46.0	32.9...45.9	200	24 +/- 1

DP01.1



DP01.2



Ordering Code:

Order number: **DP01.** 1. 2. 25. 0. 0

Paddle-type flow switch

Version:

- 1 = With T fitting, brass or stainless steel
- 2 = With PVC T fitting
- 3 = With brass T fitting and microswitch
- 4 = With 1/2" male thread, brass or stainless steel, installation length 51 mm
- 5 = With 1/2" male thread, brass or stainless steel, installation length 111 mm
- 6 = With soldering connector (brass) or welding connector (stainless steel), installation length 24 mm

Material:

- 1 = Brass (not DP01.2)
- 2 = Stainless steel (not DP01.2, DP01.3)
- 3 = PVC (DP01.2 only)

Nominal size:

DP01.1 only

08 = 1/4"

DP01.1 and DP01.3

10 = 3/8"

DP01.3 only

14 = 1/2" male thread

DP01.1, DP01.2, DP01.3

15 = 1/2"

20 = 3/4"

25 = 1"

32 = 1 1/4"

40 = 1 1/2"

50 = 2"

DP01.4, DP01.5 and DP01.6

00 = All nominal sizes from 2" to 6" as per table

Preset switching point:

- 0 = None
- 1 = Factory-set switching point (increasing)
- 2 = Factory-set switching point (decreasing)

Options:

- 0 = None
- 1 = Please specify in writing

Technical Specifications:

Max. pressure: 10 bar* (brass and stainless steel)
2.5 bar (PVC)
* reduced pressure stage equipment with cooper pipe section

Max. temperature: 110°C (brass and stainless steel)
100°C (DP01.3)
60°C PVC

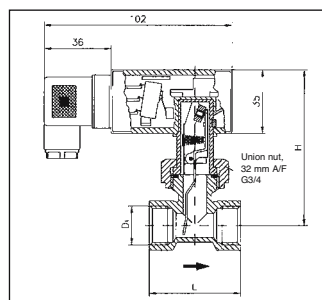
Reed contact:

Contact operation: NC contact/NO contact
Switching capacity: 230 VAC / 48 VDC, 1A, 20W/26 VA

Microswitch:

Contact operation: Changeover contact
Switching capacity: 250 VA, 5A, 1250 VA

DP01.3



DP01.4 / DP01.5 / DP01.6

