

(*) VEDI TABELLA ATTACCHI PORTAGOMMA /
SEE SCHEDULE "HOSE BIB CONNECTION" /
SIEHE TABELLE "SCHLAUCHNIPPELANSCHLUSS"

CARATTERISTICHE SPECIFICATIONS

ATTACCHI PIPES in → out	Ø mm	CODICE CODE	KV m ³ /h	M.O.P.D. bar		DIMENSIONI/DIMENSIONS mm				PESO/WEIGHT Kg
				AC	DC	A	B	C	D	
1/8" NPT	1,5	5503	0.065	17	8	31	48	40	41	0.105
(*)	2,0	5504	0.090	13	7	66	54	40	41	0.130
1/4" NPT	1,5	5505	0.065	17	8	38	56	40	42	0.100
1/8"	2,8	5509	0.160	7	2	31	56	40	41	0.100
1/8"	1,5	5510	0.065	17	8	31	54	40	41	0.100
1/8"	2,0	5510	0.090	13	7	31	54	40	41	0.100
1/8"	2,5	5510	0.150	9	2	31	54	40	41	0.100
1/8"	2,7	5510	0.160	8	2	31	54	40	41	0.100
1/8"	3,3	5510	0.190	4	1	31	54	40	41	0.100
1/8"	1,5	5511	0.065	17	8	31	48	40	41	0.100
1/8"	2,0	5511	0.090	13	7	31	48	40	41	0.100
1/8"	2,7	5511	0.160	8	2	31	48	40	41	0.100
1/8"	3,3	5511	0.190	4	1	31	48	40	41	0.100
1/4"	1,5	5512	0.065	17	8	38	56	40	42	0.120
1/4"	2,0	5512	0.090	13	7	38	56	40	42	0.120
(*)	2,0	5522	0.090	13	7	49	45	40	39	0.105
(*)	2,0	5523	0.090	13	7	35	44	40	39	0.090
(*)	2,0	5524	0.090	13	7	35	44	40	39	0.090
(*)	2,0	5525	0.090	13	7	32	61	40	39	0.090
(*)	2,0	5532	0.090	13	7	63	54	40	41	0.125
(*)	2,2	5534	0.105	10	3	56	54	40	44	0.125
(*)	2,0	5535	0.090	13	7	70	51	40	41	0.130
(*)	2,0	5536	0.090	13	7	66	54	40	41	0.130
1/8"	2,0	5537	0.090	13	7	26	51	40	43.5	0.110
1/8"	2,5	5537	0.150	9	2	26	48	40	41	0.110
1/8"	2,0	5540	0.090	13	7	39	54	40	41	0.110
(*)	1,5	5541	0.065	17	8	58,5	51	40	41	0.125
(*)	2,0	5541	0.090	13	7	58,5	51	40	41	0.125
1/8"-M8x1	2,0	5543	0.090	13	7	31	54	40	41	0.105
1/8" NPT	2,0	5545	0.090	13	7	26	48	40	41	0.110
1/8" NPT	3,0	5545	0.175	5	1	26	48	40	41	0.110
1/8" NPT	2,0	5546	0.090	13	7	26	51	40	43.5	0.105
3/8"	2,0	5548	0.090	-	7	73	53,5	40	41	0.190
5/8" -18UNF	2,0	5549	0.090	-	7	64	53,5	40	41	0.100
(*)	2,3	5572	0.090	10	3	70	47	40	40	0.130
(*)	2,3	5573	0.090	10	3	70	47	40	40	0.130
1/8"-M8x1	2,0	5584	0.090	13	7	79	56	40	43	0.150

CARATTERISTICHE ELETTRICHE ELECTRICAL INFORMATION

	V~						V=		POTENZA/POWER	
	12	24	48	110	230	400	50	60	NOMINALE HOLDING	SPUNTO IN RUSH
Hz									11VA	15VA
	12	24	48	110					9W	

Per dettagli costruttivi sulle bobine vedi capitolo "INFORMAZIONI DI PROGETTO"
For construction details of the coils see chapter "PROJECT INFORMATION"
Ausführliche Daten über die Ventilspulnen finden Sie unter Abschnitt "TECHNISCHE
INFORMATIONEN"

MAX TEMPERATURA MAX TEMPERATURE

FLUIDI/FLUIDS				AMBIENTE/AMBIENT
NBR	EPDM	FPM	HNBR	80°C
90°C	140°C	140°C	110°C	

Disponibili bobine per temperature ambiente fino a 120°C
Coils available for ambient temperatures up to 120°C
Spulen verfügbar für Umgebungstemperaturen bis zu 120°C

ATTACCHI PORTAGOMME HOSEBIB PIPES

CODE	IN	OUT	IN	OUT
5504	PG	PG		
5522 5523 5524 5525	R 1/8"	PG		
5532	PG	PG		
5534	1/4"	PG		
5535	PG/M12x1	M12x1/PG		
5536	PG	PG		
5541	1/4"	PG		
5572 5573	PG	PG		

serie 55

ELETTROVALVOLA AZIONE DIRETTA 2/2 VIE N.C.
SOLENOID VALVE DIRECT ACTING 2/2 WAY N.C.
DIREKTGESTEUERTES MAGNETVENTIL 2/2 WEGE S.G.



I CARATTERISTICHE GENERALI
PRESSIONE MINIMA DI FUNZIONAMENTO 0 bar
PARTI A CONTATTO CON IL FLUIDO

TENUTA EPDM - NBR - FPM
CORPO OTTONE
ORGANI INTERNI ACCIAIO INOX
FLUIDI ACQUA - ARIA - VAPORE - GAS INFIAMMABILE - GAS INERTI

VALVOLA UNIDIREZIONALE
VALVOLA NON ISPEZIONABILE

POSIZIONE DI MONTAGGIO Qualsiasi; sconsigliata quella con bobina rivolta verso il basso
TEMPERATURA AMBIENTE 80°C, in D.C. per temperature superiori a 40°C, le performance (M.O.P.D.) potrebbero diminuire

ESECUZIONI SPECIALI NICHELATURA SUL CORPO
 BYPASS = FORO DI COMUNICAZIONE TRA INGRESSO E USCITA PER CONSENTIRE IL PASSAGGIO RIDOTTO MA CONTINUO DEL FLUIDO

ACCESSORI CONNETTORE TRIPOLARE UNI ISO 6952 (DIN 43650B) - IP65
 FILTRO MECCANICO IN INGRESSO (5505-5510-5511-5512-5535-5536-5537)

UK GENERAL FEATURES

MINIMUM WORKING PRESSURE 0 bar
PARTS IN CONTACT WITH THE FLUID

SEALING EPDM - NBR - FPM
BODY BRASS
INTERNAL PARTS STAINLESS STEEL
FLUIDS WATER - AIR - STEAM - INFLAMMABLE GAS- INERT GAS

ONE WAY DIRECTION VALVE
NON-SERVICEABLE VALVE

MOUNTING POSITION Any, the position with the coil downwards is not recommended.
AMBIENT TEMPERATURE 80°C, in D.C. for temperatures higher than 40°C, the performances (M.O.P.D.) could decrease.

SPECIAL EXECUTIONS NICKEL-PLATED VALVE BODY
 BY-PASS= COMMUNICATION HOLE BETWEEN INLET AND OUTLET TO ALLOW A REDUCED BUT CONSTANT PASSAGE OF FLUID

ACCESSORIES THREE POLE PLUG CONNECTOR UNI ISO 6952 (DIN 43650B) -IP65
 MECHANICAL FILTER ON THE INLET SIDE (5505-5510-5511-5512-5535-5536-5537)

D ALLGEMEINE MERKMALE

MINIMALER ARBEITSDRUCK 0 bar
MEDIUMS BERUEHRTE ELEMENTE

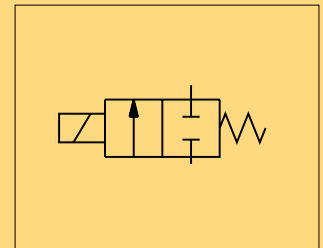
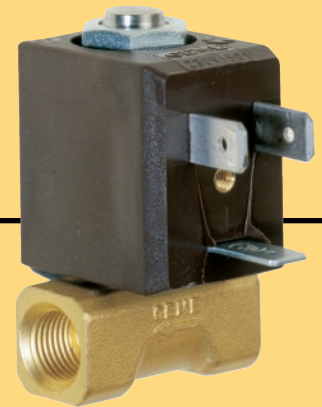
DICHTUNG EPDM - NBR - FPM
KOERPER MESSING
INNERE ELEMENTE EDELSTAHL
MEDIEN WASSER - LUFT - DAMPF - ENTZUENDBARE GASE - EDELGASE

UNIDIREKTIONALES VENTIL
VENTIL WARTUNGSFREI

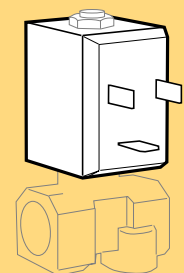
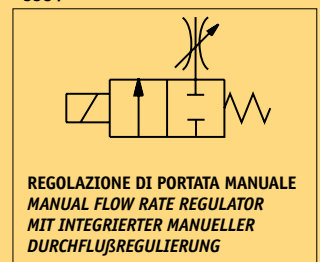
MONTAGEPOSITION Keine Einschränkungen. Fuer Montage mit dem Spulenkopf senkrecht nach unten, auf Anfrage.
UMGEBUNGSTEMPERATUR 80°C, im D.C-Betrieb koennen Temperaturen ueber 40°C die Schaltkrafte(M.O.P.D.) des Ventils beeintraechtigen.

SONDERAUSFUEHRUNGEN VERNICKELTER GRUNDKOERPER
 BYPASS= VERBINDUNGSBOHRUNG ZWISCHEN EINGANGS-AUSGANGSSEITE UM EINEN GERINGEN ABER KONSTANTEN DURCHFLUSS ZUERMOEGLICHEN

ZUBEHOER DREIPOLIGER STECKER UNI ISO 6952 (DIN 43650B) - IP65
 MECHANISCHER FILTER AUF EINGANGSSEITE (5505-5510-5511-5512-5535-5536-5537)



5584



BOBINA TIPO B4
COIL TYPE B4
SPULE TYP B4



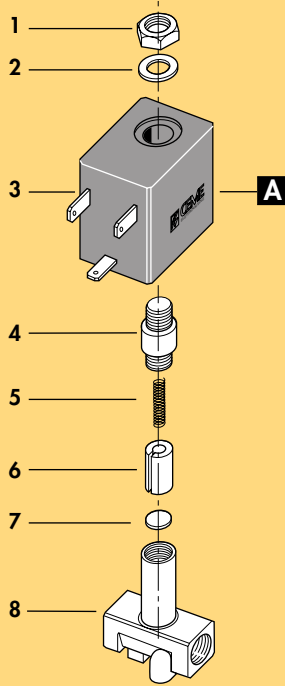
昆山苏美自动化科技有限公司

Kunshan Sumei Automation Technology Co.,LTD

TEL: (+86) 512-57914649 57910267 FAX: (+86) 512-82092939

Mail: kssumei@163.com Web: http://www.smzdh.com

serie 55



1	Dado	Lock nut	Mutter
2	Rondella	Washer	Beilagscheibe
3	Bobina	Coil	Magnetspule
4	Nucleo fisso	Tube top	Kern
5	Molla	Spring	Feder
6	Nucleo mobile	Plunger	Plunger
7	Pastiglia	Seal	Dichtung
8	Corpo	Valve body base	Grundkörper
RICAMBI		SPARE PARTS	ERSATZTEILE
A	Bobina	Coil	Magnetspule

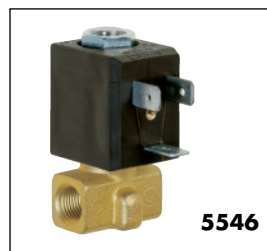
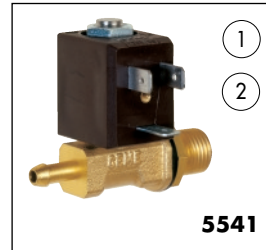
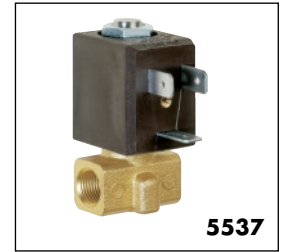
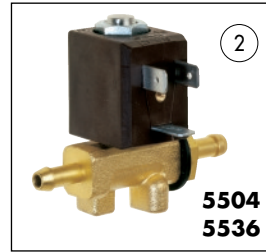
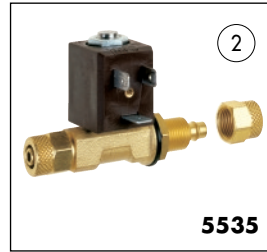
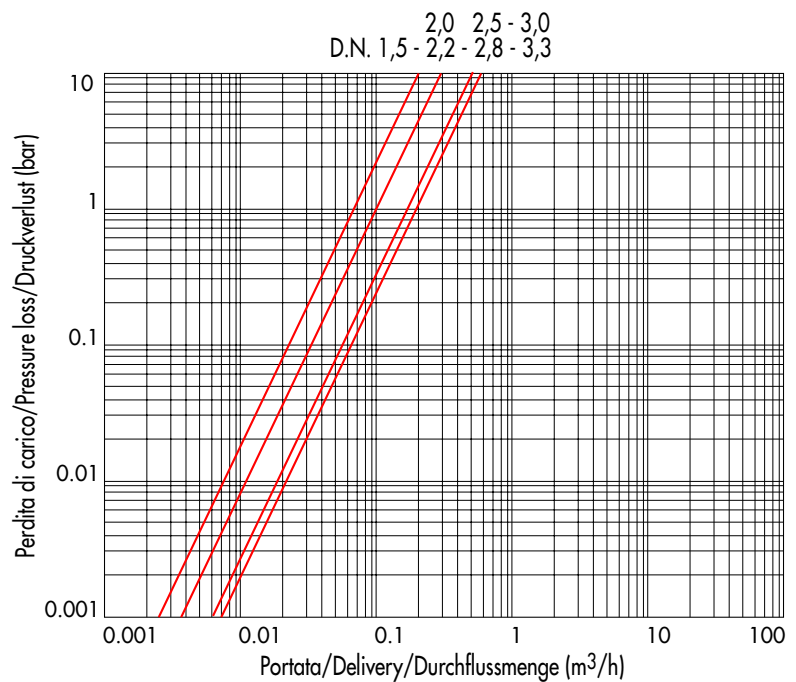


DIAGRAMMA PERDITA DI CARICO PRESSURE LOSS DIAGRAM



VALVOLA FORNITA CON

- ① FILTRO MECCANICO IN INGRESSO NON ISPEZIONABILE PER EVITARE L'INTRODUZIONE DI SPORCIZIA NELLA VALVOLA (5532, 5540, 5543, 5545, 5534, 5541, 5544, 5584).
- ② DADO E GUARNIZIONE DI FISSAGGIO DELLA VALVOLA DIRETTAMENTE SULLA CARPENTERIA DI UNA MACCHINA (INDICATO PER INDUSTRIA SALDATRICI) (5504, 5534, 5535, 5536, 5541, 5544, 5584).



QUESTA SERIE DI VALVOLE E' IDONEA ALL'INTERCETTAZIONE DI GAS INFIAMMABILE, OLTRE A TUTTI GLI ALTRI FLUIDI DESCRITTI NELLE CARATTERISTICHE GENERALI PAG.15. ALCUNI MODELLI SONO STATI SOTTOPOSTI ALL'ESAME DI TIPO RICHIESTO DALLA DIRETTIVA EUROPEA CEE 90/396 (APPARECCHI A GAS E SUOI COMPONENTI) (5510, 5511, 5512, 5540, 5542, 5543, 5584).

VALVE SUPPLIED WITH:

- ① NON-SERVICEABLE MECHANICAL FILTER ON INLET, TO DETER PARTICLE INTRODUCTION IN THE VALVE (5532-5534-5540-5541-5543-5544- 5545-5584).
- ② NUT AND GASKET TO MOUNT THE VALVE DIRECTLY ONTO A BULKHEAD OF A MACHINE (INDICATED FOR WELDING INDUSTRY) (5504, 5534, 5535, 5536, 5541, 5544, 5584).



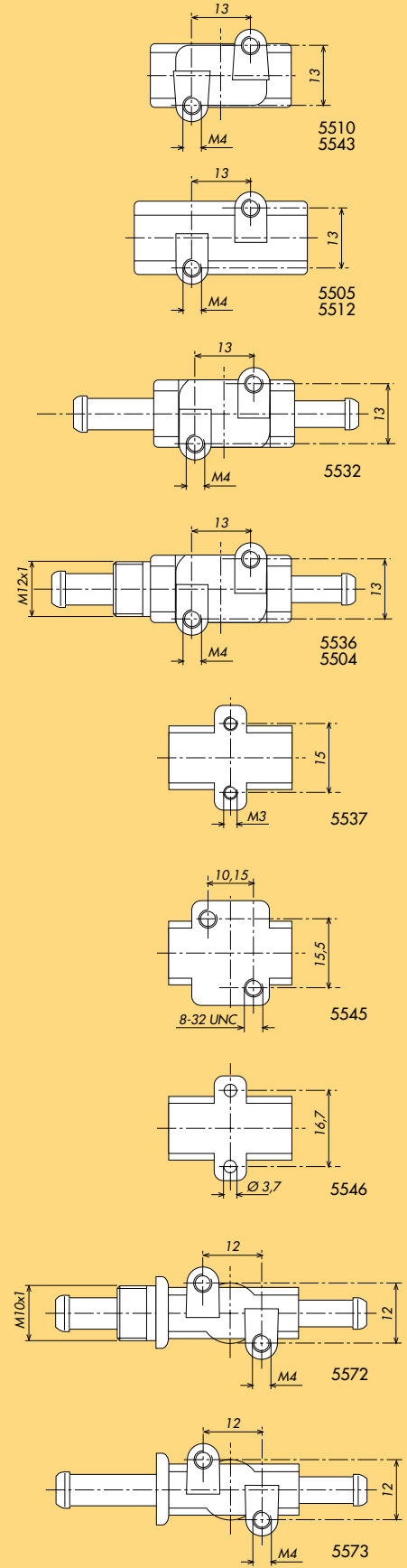
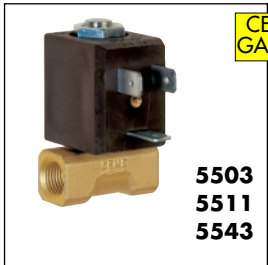
BESIDES ALL OTHER KIND OF MEDIUMS POINTED OUT IN THE GENERAL FEATURES OF PAGE NO. 15, THIS SERIES OF VALVES ARE SUITABLE FOR INTERCEPTION OF INFLAMMABLE GAS, CERTAIN MODELS HAVE BEEN SUBMITTED FOR THE TESTING REQUIRED FROM THE EEC DIRECTIVE CEE 90/ 396 (GAS APPARATUS AND THEIR COMPONENTS) (5510, 5511, 5512, 5540, 5542, 5543, 5584).

LIEFERUMFANG:

- ① WARTUNGSFREIER MECHANISCHER FILTER AUF VENTILEINGANGSSEITE UM DAS EINDRINGEN VON SCHMUTZ ZU VERMEIDEN (5532, 5534, 5540, 5541, 5543, 5544, 5545, 5584).
- ② MUTTER UND DICHTUNG UM DAS VENTIL DIREKT AN GEHAUSEWAENDEN DER MASCHINEN ZU MONTIEREN (z.B. SCHWEISSMASCHINEN) (5504, 5534, 5535, 5536, 5541, 5544, 5584).



AUSSER DEN BEREITS AUF SEITE 15 IN DEN ALLGEMEINE MERKMALEN ANGEGBEN MEDIEN, WURDEN DIESE VENTILSERIEN SPEZIELL FUER DIE VERWENDUNG MIT ENTZUENDBAREN GASEN GEPRUEFT.EIN GROSSTEIL DER BAUSERIEN WURDE GEMAESS EUROPAEISCHER GAS RICHTLINIE CEE 90/396 GEPRUEFT UND UNTERLIEGEN SOMIT EINER 100%TIGER DICHTIGKEITSPRUEFUNG. IM SPEZIELLEN DIE TYPEN (5510, 5511, 5512, 5540, 5542, 5543, 5584).



昆山苏美自动化科技有限公司

Kunshan Sumei Automation Technology Co.,LTD

TEL: (+86) 512-57914649 57910267 FAX: (+86) 512-82092939

Mail: kssumei@163.com Web: http://www.smzdh.com

serie 55