

Dexela Limited

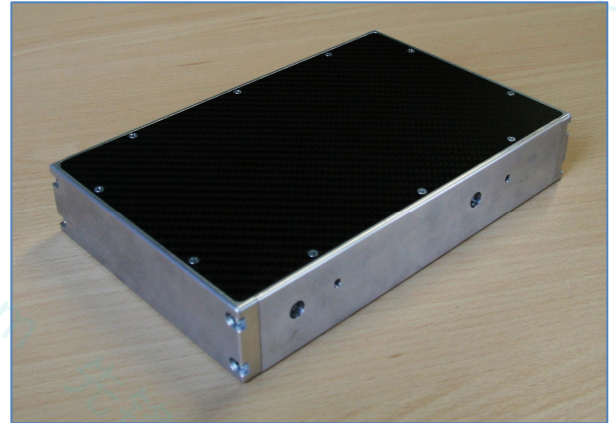
50-52 Wharf Road, London, N1 7EU, United Kingdom

Tel: +44 20 7148 3107
www.dexela.com

DEXELA 1207 CMOS X-ray Detector Product Specifications

The Dexela 1207 CMOS X-ray Detector is a high speed, low noise flat panel X-ray detector built from a single silicon die. It employs the innovative large-area CMOS image sensor technology and is supplied with a choice of columnar CsI or Gadox X-ray converters. This detector has a Camera Link interface.

The Dexela 1207 CMOS X-ray Detector is suitable for small-field digital mammography, bone densitometry and high-speed dental cone-beam CT imaging. It can also be used for next generation fluoroscopic diagnostic imaging equipment, mini C-arms and non-destructive testing.



1207 CMOS X-ray Detector

| | |
|---------------------------------|---|
| Detector sensor | CMOS |
| X-ray converter | Gadox or CsI |
| Sensitive area (mm) | 114.4 x 64.6 |
| Pixels | 1536 x 864 |
| Pixel size (um) | 74.8 / 149.6 / 299.2 (depending on binning) |
| Image (MPixel) | 1.3 to 0.08 (depending on binning) |
| MTF @ 6 lp/mm | >20 % (150um HR CsI at no binning) |
| DQE | ~0.7 at 1 lp/mm (28 kV, W / Al) |
| Binning | 1 x 1, 1 x 2, 2 x 2, 1 x 4, 2 x 4, 4 x 4 |
| Operating modes | Low Noise or High Saturation Modes |
| Dynamic range | 6400x – 2400x depending on Operating Mode and Binning |
| Saturation Level (e-/pixel) | 22,400,000 – 360,000 |
| Frame rate (frames/s) | 65 - 195 depending on binning (Camera Link) |
| Special Readout mode | Non-destructive spatial sampling, 20,000 frames/s |
| ADC resolution | 14-bits per pixel |
| Data interface | Camera Link, Base Configuration |
| Power requirements | +6V/1A, -6V/0.1A +4V/1A |
| Power consumption | 11W (active) 0.5W (standby) |
| Operating temperature range (C) | +10 to +40 |
| Storage temperature range (C) | -5 to +50 |
| Size (mm) | 223 x 152 x 43 |
| Weight (kg) | 2 |
| Regulatory Compliance | CE- and ETL-marked, IEC 60601-1 |