



**Test Report No. F690501/LF-CTSAYAA09-01144C**

Issued Date: January 16, 2009 Page 1 of 3

To: **AMO**  
185-1,Sucham-ri  
Tongjin-eup  
Gimpo-city  
GYEONGGI-DO  
Korea

The following merchandise was submitted and identified by the client as :

**Product Name** : Nano-Crystalline Amorphous Ribbon  
**SGS File No.** : AYAA09-01144C  
**Received Date** : January 13, 2009  
**Test Performing Date** : January 14, 2009  
**Test Performed** : SGS Testing Korea tested the sample(s) selected by applicant with following results  
**Test Results** : For further details, please refer to following page(s)

**Pluto Kim**  
**Monet Jeong**  
**Billy Oh / Testing Person**

**SGS Testing Korea Co. Ltd.**

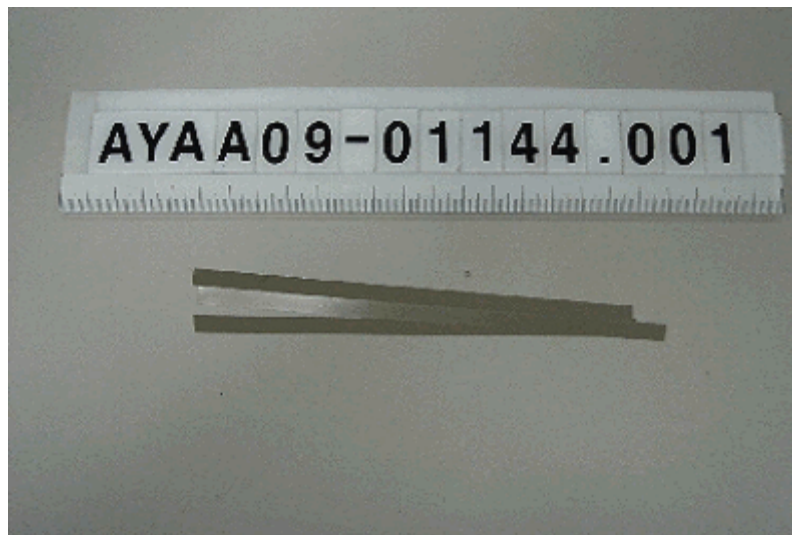
**Jeff Jang / Chemical Lab Mgr**

This document is issued by the Company under its General Conditions of Service printed overleaf or available on request and accessible at [http://www.sgs.com/terms\\_and\\_conditions.htm](http://www.sgs.com/terms_and_conditions.htm). Attention is drawn to the limitation of liability, indemnification and jurisdiction issues defined therein. Any holder of this document is advised that information contained hereon reflects the Company's findings at the time of its intervention only and within the limits of Client's instructions, if any. The Company's sole responsibility is to its Client and this document does not exonerate parties to a transaction from exercising all their rights and obligations under the transaction documents. Any unauthorized alteration, forgery or falsification of the content or appearance of this document is unlawful and offenders may be prosecuted to the fullest extent of the law. Unless otherwise stated the results shown in this test report refer only to the sample(s) tested. This document cannot be reproduced except in full, without prior approval of the Company.

**Sample No.** : AYAA09-01144C.001  
**Sample Description** : Nano-Crystalline Amorphous Ribbon  
**Item No./Part No.** : 9J06

**Heavy Metals**

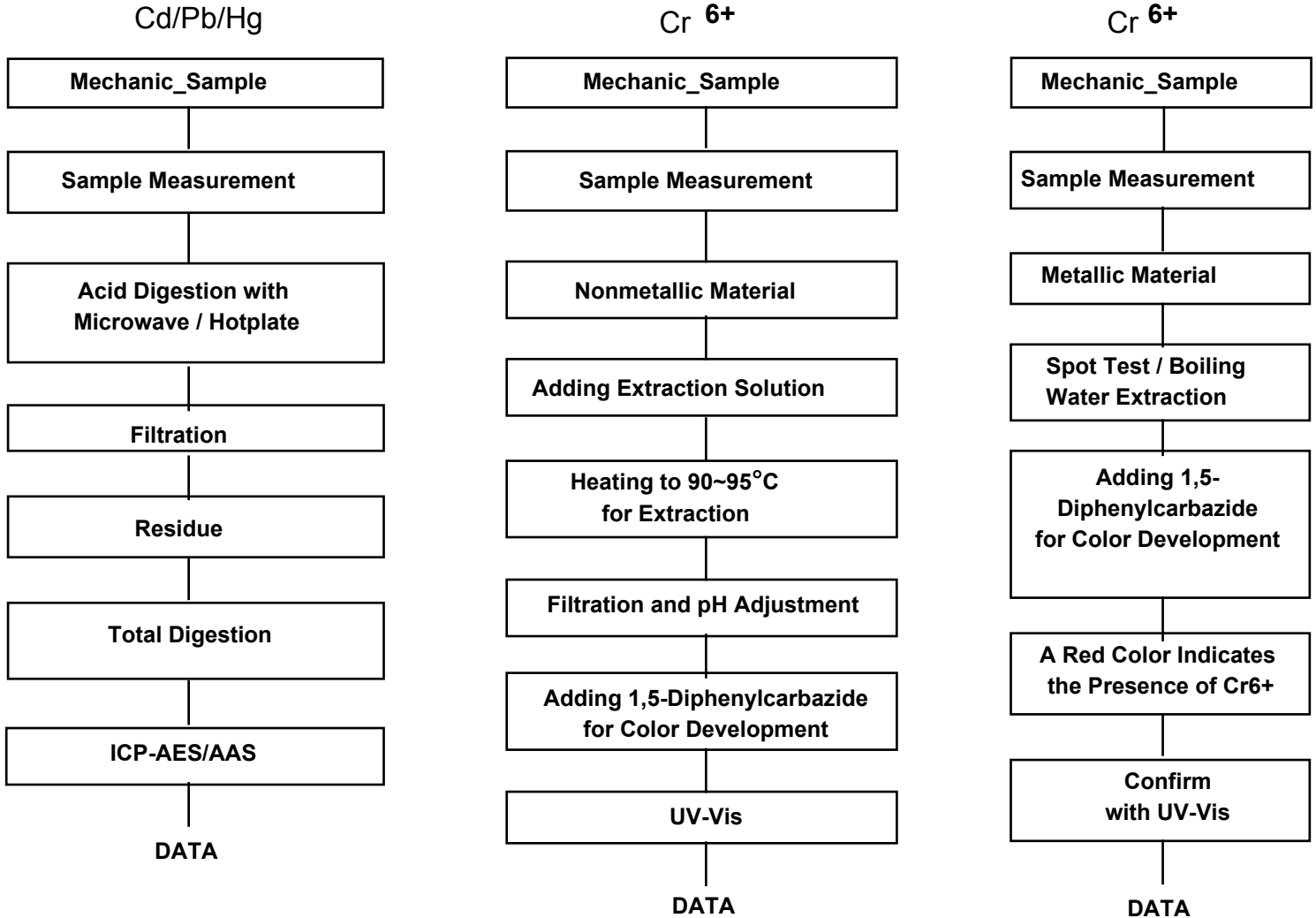
Test Items	Unit	Test Method	MDL	Results
Cadmium (Cd)	mg/kg	With reference to IEC 62321 Ed.1, ICP-OES	0.5	N.D.
Lead (Pb)	mg/kg	With reference to IEC 62321 Ed.1, ICP-OES	5	N.D.
Mercury (Hg)	mg/kg	With reference to IEC 62321 Ed.1, ICP-OES	2	N.D.
Hexavalent Chromium (Cr VI) By boiling water extraction	**	With reference to IEC 62321 Ed.1	-	Negative

**Picture of Sample as Received:**


- NOTE:
- (1) N.D. = Not detected.(<MDL)
  - (2) mg/kg = ppm
  - (3) MDL = Method Detection Limit
  - (4) - = No regulation
  - (5) \*\* = Qualitative analysis (No Unit)
  - (6) Negative = Undetectable / Positive = Detectable



Testing Flow Chart for RoHS: Cd/Pb/Hg/Cr<sup>6+</sup> Testing



The samples were dissolved totally by pre-conditioning method according to above flow chart for Cd,Pb,Hg.

Operator Dami Yeom

Section Chief Jeff Jang

\*\*\* End \*\*\*

- NOTE:
- (1) N.D. = Not detected.(<MDL)
  - (2) mg/kg = ppm
  - (3) MDL = Method Detection Limit
  - (4) - = No regulation
  - (5) \*\* = Qualitative analysis (No Unit)
  - (6) Negative = Undetectable / Positive = Detectable

This document is issued by the Company under its General Conditions of Service printed overleaf or available on request and accessible at [http://www.sgs.com/terms\\_and\\_conditions.htm](http://www.sgs.com/terms_and_conditions.htm). Attention is drawn to the limitation of liability, indemnification and jurisdiction issues defined therein. Any holder of this document is advised that information contained hereon reflects the Company's findings at the time of its intervention only and within the limits of Client's instructions, if any. The Company's sole responsibility is to its Client and this document does not exonerate parties to a transaction from exercising all their rights and obligations under the transaction documents. Any unauthorized alteration, forgery or falsification of the content or appearance of this document is unlawful and offenders may be prosecuted to the fullest extent of the law. Unless otherwise stated the results shown in this test report refer only to the sample(s) tested. This document cannot be reproduced except in full, without prior approval of the Company.