



### 【特點】

- 內置微處理器，數值精準，操作簡易
- 完全符合安全標準的規範
- 內建常見標準的人體模擬阻抗，一組外接，使用效率高
- 可量測常態、單一故障及接地失效的洩漏電流
- 可以和華儀耐壓測試器結合使用，組成自動化測試系統
- 量測頻寬達 1MHZ 符合 IEC 相關標準要求
- 可自動執行 8 組狀態洩漏電流的量測 ( 7611 )
- 可外接標準 GPIB / RS232 界面作控制
- 內建多組程式記憶組 (7611/7623 10組)
- 前面板軟體輸入校正
- 鍵盤鎖定功能
- 量測速度快，準確度高

### 【Features】

- Built-in microprocessor design with high accuracy of measurement and user friendly
- Full compliance to various safety agencies standard
- Built-in common Measuring Devices (MD) and an external MD circuit connection also available
- Able to perform normal, single fault and ground open measurement configurations
- Able to link EXTECH safety tester and AC Power Source to form a complete Electrical Safety Test System
- Wide measurement bandwidth DC ~ 1MHz for IEC compliance requirement
- Performs the 8 most common Line Leakage Tests in sequences (7611)
- GPIB or RS232 interfaces
- Storage up to multiple memories ( 10 memories for 7611/7623 )
- Front panel software calibration
- Front Panel Lockout
- Fast and accurate measurement test result

## Line Leakage Testers

## 【Specification】

MODEL	7611	7623
<b>CURRENT MEASUREMENT</b>		
Frequency Range	DC-1MHZ	
CMRR	>40dB@1MHZ	
Input Impedance/Capacitance	>1MΩ/<200pf	
<b>Leakage current (7611)</b>	<b>Resolution</b>	<b>Accuracy(DC-10KHZ)</b>
0.0-999.9, μA	0.1	±(1.5%of reading+ 5counts)
1000-6000, μA	1	±(1.5%of reading+ 2counts)
<b>Leakage current (7623)</b>	<b>Resolution</b>	<b>Accuracy(DC-200KHZ)</b>
0.0-999.9, μA	0.1	±(5%of reading+ 0.5 μA)
1000-9999, μA	1	
<b>Accuracy(10K-1MHZ)</b>	±(5%of reading+ 5counts)	
<b>Accuracy(200K-1MHZ)</b>	±(5%of reading+ 2 μA)	
<b>LINE VOLTAGE MEASUREMENT</b>		
Range	0 - 300 VAC	
Resolution	0.1 V	
Accuracy	±(1%of reading+ 2counts)	
<b>DUT</b>		
DUT Input Power Rating	30~300 VAC	30~277 VAC
	Single Phase Unbalanced (One Hot or Line conductor and One Neutral)	
DUT Current Capacity	30A	20A
DUT Production	32A, Short circuit current	22A, Short circuit current
	Response Time < 600msec	
<b>SETTINGS</b>		
High/Low Trip, μA (7611)	Range 0-6000 μA (0=OFF), Resolution 1μA	
High/Low Trip, μA (7623)	Range 0-9999 μA (0=OFF), Resolution 1μA	
Delay Time, second	Range 0, 1.0-999.9 (0=continuous), Resolution 0.1second	
<b>MEASUREMENT DEVICE CIRCUIT</b>		
	A/B/C/D/E/F	A/E/F
MD A	UL 544 Non Patient , UL484 , IEC60598	
MD B	UL 544 Patient Care	
MD C	IEC60601-1, UL2601-1, EN 60601-1	
MD D	UL1563	
MD E	UL60950, IEC60950, IEC61010-1, IEC60335-1, IEC60990	
MD F	External MD	
<b>GENERAL</b>		
Input Voltage	115/230Vac±15%, 50/60Hz ± 5%, max. current 2A	
PLC Remote Control	Input : Test , Reset , Memory1.2.3 Output : Pass , Fail , Processing for model 7611. Pass , Fail , Processing Reset-Out , Start-Out for module 7623	
Memory	10 memories, 8 steps/memory	10 memories, 8 steps/memory
Display	16 x 2 LCD with back light	20 x 2 LCD with back light
Key Lock	To prevent unauthorized alteration of the test Parameters	
Calibration	Build-in software and external calibrated meters	
Interface	GPIB/RS232 (Option)	
Alarm Volume Setting	Range: 0-9 ;0=OFF, 1 is softest volume, 9 is loudest volume.	
Environment	0-40°C, 20-80%RH	
Dimension	430(W) x 89(H) x 400(D)mm	430(W) x 89(H) x 400(D)mm
Net Weight	7.5Kg	7.5Kg
<b>STANDARD ACCESSORIES</b>		
Power Cord(10A)	x 1	x 2 (10A/15A)
Fuses	x 2 (Including a spare contained in the fuse holder)	
Hipot Return Lead ,1.8m (1102)	x 2	-
DUT I/P Power Cord ,1.6m (1761)	x 1	-
LLT Receptacle Adaptor Box 10A ,1.6m (1905)	-	x 1
LLT Receptacle Adaptor Box ,1.6m (1906)	x 1	-

\*product specifications are subject to change without notice.

## 【Ordering Information】

7611 Line Leakage Tester (30A)

7623 System Line Leakage Tester (20A)

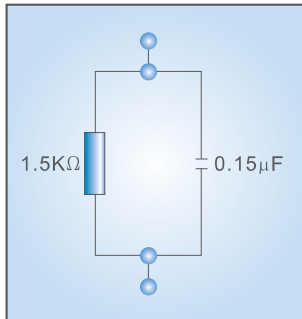
Opt. 705 RS232 Interface

Opt. 706 GPIB Interface

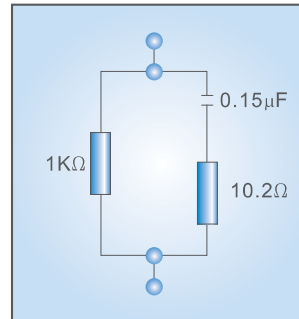
## Line Leakage Testers

Build-in Measuring Device (Five groups for model 7611 and two groups for model 7623)

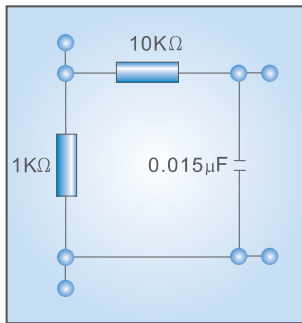
MD A=UL544NP、UL484、 IEC60598



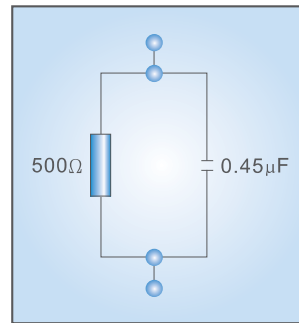
MD B=UL544P



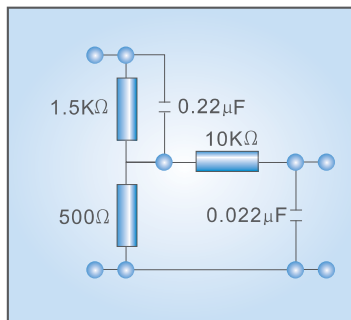
MD C = IEC60601-1,UL2601-1, EN60601-1



MD D= UL1563



MD E = IEC61010-1,UL61010, IEC60950, IEC 60335-1、 IEC60990



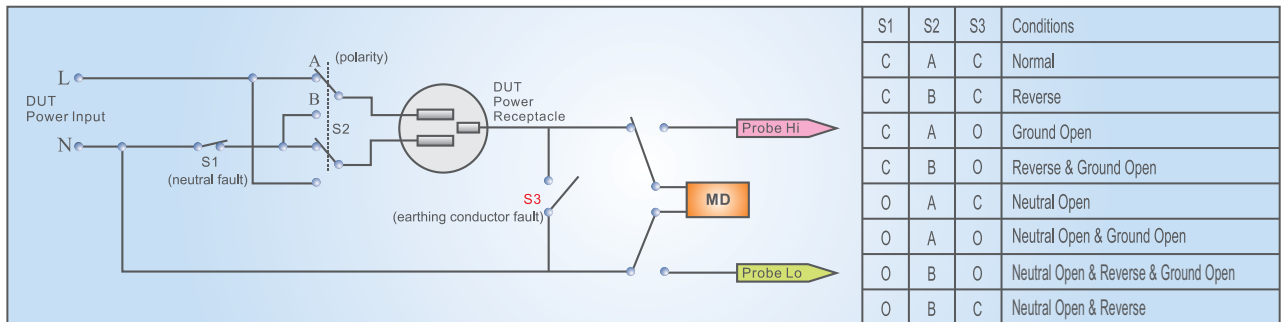
Cross Reference Letter	Agency Specification	Application
A	UL544 Non patient equipment	Medical Equipment
B	UL544 Patient care equipment	Medical Equipment
C	IEC60601-1, UL2601, EN60601-1	Medical Equipment
D	UL1563	Electric Spas, Equipment Assemblies and Associated Equipment
E	IEC61010-1,	Laboratory Equipment.
	IEC60950, UL60950, EN60950	Information Technology Equipment.
External	User configurable	User configurable

## Line Leakage Testers

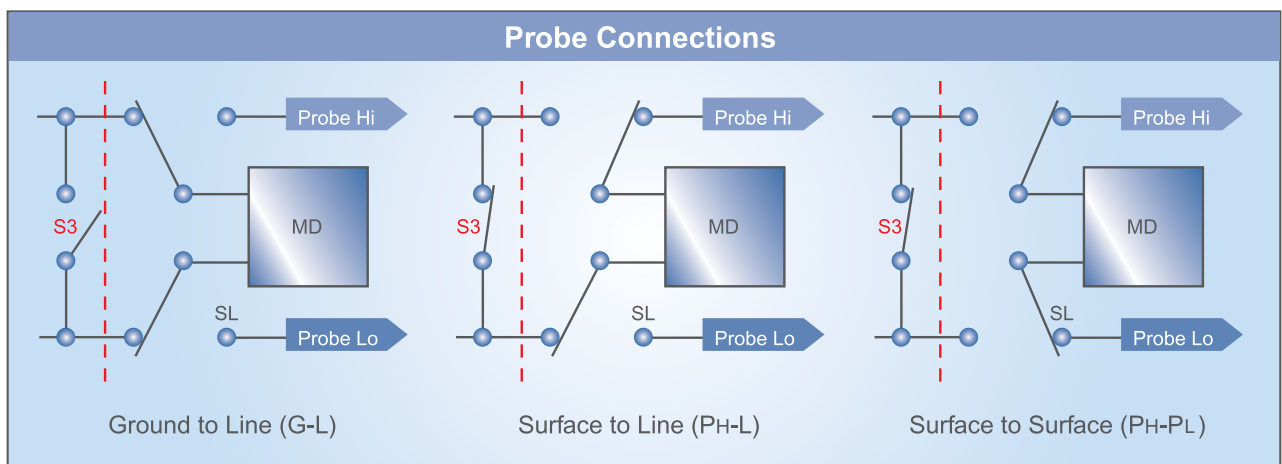
### MODEL 7611 measurement configuration

In accordance to IEC, UL or any safety standards for line leakage test, the model 7611 can be setup to 8 types of measurement configurations test in normal, reverse polarity, neutral fault, earthing conductor fault.

Different types of measurement configurations can be setup into one memory and the user able to run the test by pressing the button. The instrument will complete all the test parameters automatically.



S1=Neutral S2=Reverse S3=Ground O: open C: close



### MODEL 7623 measurement configuration

Model 7623 is exclusively designed to test for Class I DUT, which are required by some safety agencies on Earth Leakage Current measurement. Different types of measurement configurations can be setup into one memory and the user able to run the test by pressing the Test button. The instrument will complete all the test parameters automatically.

