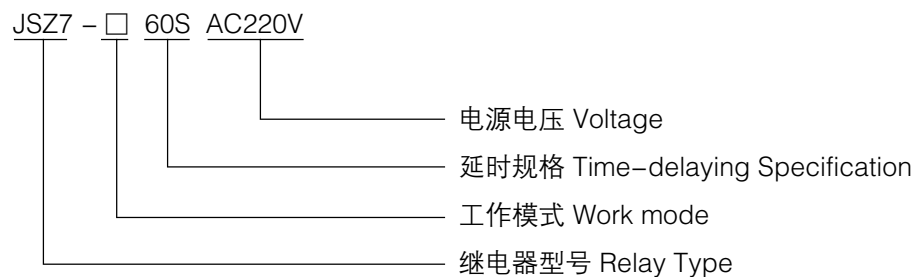




1 产品特性 Product Specialties

- 1.1 内部结构集成式 Internal structure integration type;
- 1.2 外部结构标准式 External structure standard type;
- 1.3 整定设置简单式 Adjusting set-up simplifying type;
- 1.4 功能模式多样性 Function mode diversification type。

2 产品型号及含义 Product Types and Meanings



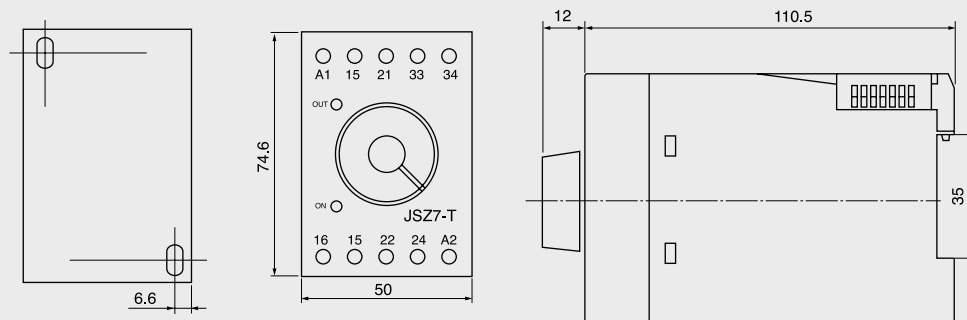
3 主要技术参数 Main Technological Parameter

电源电压 Voltage	DC12V~DC220V, AC12V~380V
延时范围 Time Range	1S~2h
安装形式 Contact Ratings	导轨式 Guides type
触点容量 Contact Capacity	AC220V:5A; DC24V:7A
环境温度 Operating Temperature	-10℃ ~ 50℃
湿度 Humidity	35%~85%
电寿命 Electricity Life	1 × 10 ⁵ 次

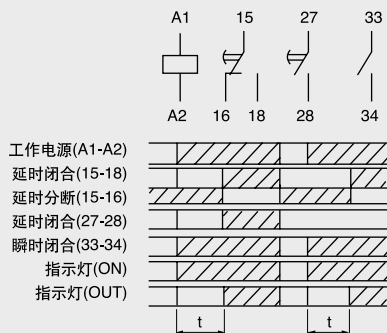
对应型号 Parallelism Type	工作模式 Work mode	延时范围 Time Range
T	通电延时 On-delay	0.6~2h
A	断电延时 Off-delay	1S~900S
H	循环延时 Circulation delaying	0.6~2h
D	断开延时 Turn off time delay	0.6~2h
S	定时延时 Timing delaying	0.6~2h
X	星三角转换 Star-delta change over	0.6~2h

4 外形安装尺寸、接线图、工作时序图

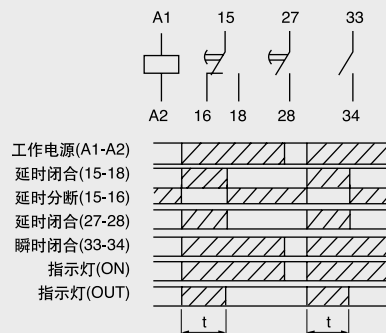
Outline and mounting dimensions, Wiring drawing, Work time-sequence drawing



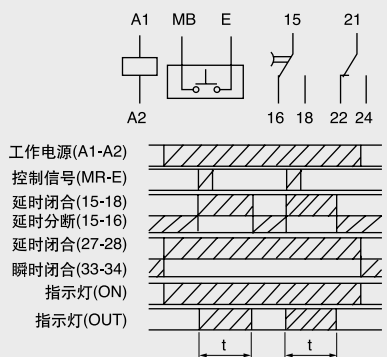
1、JSZ7-T接线图和工作时序图



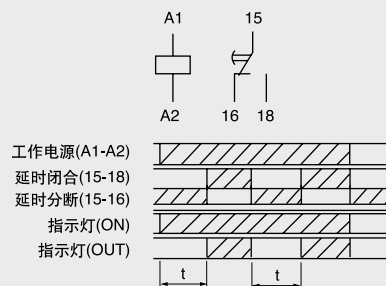
2、JSZ7-S接线图和工作时序图



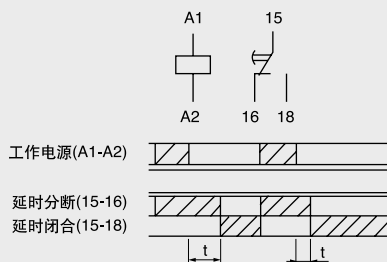
3、JSZ7-D接线图和工作时序图



4、JSZ7-H接线图和工作时序图



5、JSZ7-A接线图和工作时序图



6、JSZ7-X接线图和工作时序图

