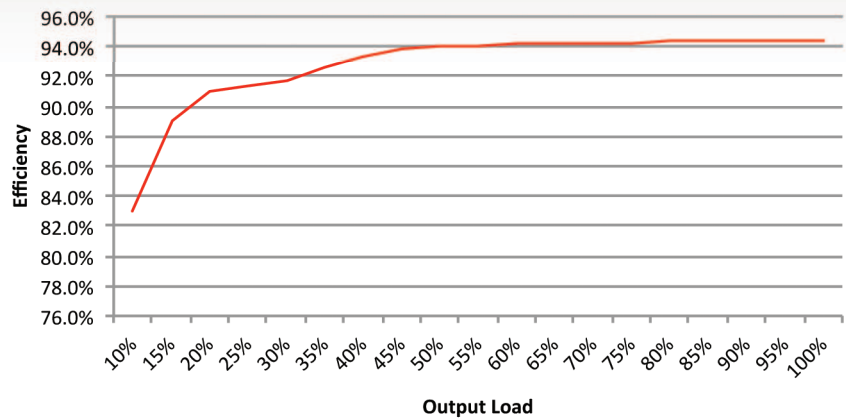


Mid-Range Industrial Power Supplies

DDP400 SERIES Best in Class Efficiency

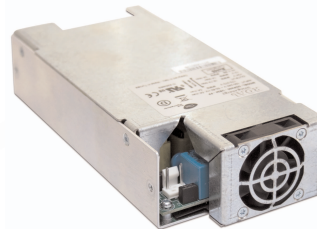
With typical efficiencies of 94% and efficiency load profiles that exceed **80 Plus Platinum requirements**, the DDP400 series of switching power supplies are the most efficient power supplies in their class.



OPEN FRAME
3" x 6.46" x 1.48"
(76 x 164.2 x 37.7mm)
0.89 lb (404g)



U-CHASSIS
3.23" x 6.55" x 1.57"
(84.4 x 166.5 x 39.8mm)
1.15lb (522g)



FRONT FAN
3.23 x 7.20 x 1.61
(84.4 x 183.0 x 41.0 mm)
1.51 lb. (682g)

The open-frame and u-chassis versions are well suited for challenging system designs where low profile, low power dissipation is desired with minimal air movement. Its low profile is applicable for industry standard 1U equipment design.

Open-frame and U-chassis versions are rated for 250W convection and 400W with forced air. The integral 12V fan output eliminates the need for an additional fan supply. The power supply can be disabled with a logic signal and dissipates less than 0.5W in standby mode allowing system level Energy Star compliance.

FEATURES

- Universal input voltage range (90 – 264 VAC)
- Active PFC, EN61000-3-2 compliant (Class C, >40 W load)
- 12, 24 and 48V standard output variants *
- Very low stand-by consumption < 0.5W
- Low earth leakage current
- Standby +5V, 2A output
- Auxiliary fan +12V, 1A output
- Variable fan speed for quiet operation (fan off <50W)
- 4000m altitude operation

*The output is tunable so any voltage from 8 to 56V is possible. Consult factory for details.

TOP FAN
3.23 x 6.55 x 1.61"
(84.4 x 166.0 x 41.0 mm)
1.48 lb. (670 g)



The fan cooled versions include the latest in fan speed control. The fan speed control monitors the operating conditions and applies the absolute minimum required airflow. This includes a fan off condition under light load operation (< 50W). This optimizes audible noise for fan cooled products to the lowest levels possible and maximizes fan lifetime, an ideal combination for audio and process control systems where power supplies are sized for short duration peak demand cycles.

ROAL
living energy

roallivingenergy.com

Mid-Range AC-DC Power Supplies

DDP400 SERIES Best in Class Efficiency

BASE MODEL NUMBER	PACKAGE	CONTINUOUS RATING WITH FORCED AIR (WATTS)	CONTINUOUS CONVECTION RATING (WATTS)	MAIN OUTPUT VOLTAGE (VDC)	MAXIMUM OUTPUT CURRENT (AMPS)
DDP400-US12-OF	OPEN FRAME	400	250	12	33.3
DDP400-US12-UC	U-CHASSIS	400	250	12	33.3
DDP400-US12-VC	TOP FAN	400	NA	12	33.3
DDP400-US12-FF	FRONT FAN	400	NA	12	33.3
DDP400-US24-OF	OPEN FRAME	400	250	24	16.7
DDP400-US24-UC	U-CHASSIS	400	250	24	16.7
DDP400-US24-VC	TOP FAN	400	NA	24	16.7
DDP400-US24-FF	FRONT FAN	400	NA	24	16.7
DDP400-US48-OF	OPEN FRAME	400	250	48	8.3
DDP400-US48-UC	U-CHASSIS	400	250	48	8.3
DDP400-US48-VC	TOP FAN	400	NA	48	8.3
DDP400-US48-FF	FRONT FAN	400	NA	48	8.3

APPLICATIONS

- Industrial and Process Control
- Laboratory Equipment
- Test & Measurement Equipment
- IT Networking & Telecom
- Audio Visual Equipment



Approved to the 2nd edition of the UL/IEC60950-1 standards for IT equipment.
All models are RoHS-6 compliant.



MORE Efficiency. LESS Waste.

ROAL Electronics S.p.A.

Via Jesina 56/A
60022 Castelfidardo (AN) - ITALY
PH: +39 071-721461
FX: +39 071-72146539
info@roallivingenergy.com

ROAL Electronics USA, Inc.

701 Main Street, Suite 405
Stroudsburg, PA 18360
PH: +1 (570) 421-5750
FX: +1 (570) 421-5687
sales@roallivingenergy.com

ROAL

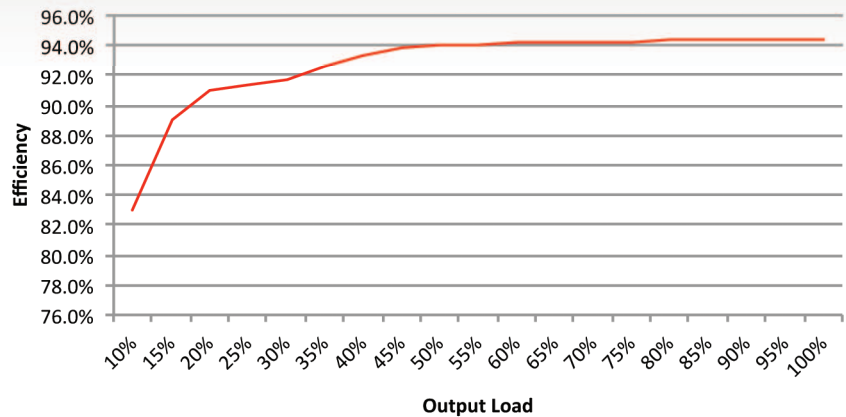
living energy

roallivingenergy.com

Mid-Range Medical Power Supplies

MDP400 SERIES Best in Class Efficiency

With typical efficiencies of 94% and efficiency load profiles that exceed **80 Plus Platinum requirements**, the MDP400 series of switching medical power supplies are the most efficient power supplies in their class.



OPEN FRAME
3" x 6.46" x 1.48"
(76 x 164.2 x 37.7mm)
0.89 lb (404g)



U-CHASSIS
3.23" x 6.55" x 1.57"
(84.4 x 166.5 x 39.8mm)
1.15lb (522g)



FRONT FAN
3.23 x 7.20 x 1.61
(84.4 x 183.0 x 41.0 mm)
1.51 lb. (682g)

The open-frame and u-chassis versions are well suited for challenging system designs where low profile, low power dissipation is desired with minimal air movement. Its low profile is applicable for industry standard 1U equipment design.

Open-frame and U-chassis versions are rated for 250W convection and 400W with forced air. The integral 12V fan output eliminates the need for an additional fan supply. The power supply can be disabled with a logic signal and dissipates less than 0.5W in standby mode allowing system level Energy Star compliance.

FEATURES

- Universal input voltage range (90 – 264 VAC)
- Active PFC, EN61000-3-2 compliant (Class C, >40 W load)
- 12, 24 and 48V standard output variants *
- Very low stand-by consumption < 0.5W
- Low Noise, No Noise Operation (fan off below 50W load)
- Low earth leakage current
- Stand-by +5V, 2A output
- Auxiliary fan +12V, 1A output
- Variable fan speed for quiet operation (fan off <50W)
- 4000m altitude operation

*The output is tunable so any voltage from 8 to 56V is possible. Consult factory for details.

TOP FAN
3.23 x 6.55 x 1.61"
(84.4 x 166.0 x 41.0 mm)
1.48 lb. (670 g)



The fan cooled versions include the latest in fan speed control. The fan speed control monitors the operating conditions and applies the absolute minimum required airflow. This includes a fan off condition under light load operation (< 50W). This optimizes audible noise for fan cooled products to the lowest levels possible and maximizes fan lifetime. An ideal combination for operating room and laboratory equipment where moving air and audible noise must be kept to the bare minimum.

ROAL
living energy

roallivingenergy.com

Mid-Range Medical Power Supplies

MDP400 SERIES Best in Class Efficiency

BASE MODEL NUMBER	PACKAGE	CONTINUOUS RATING WITH FORCED AIR (WATTS)	CONTINUOUS CONVECTION RATING (WATTS)	MAIN OUTPUT VOLTAGE (VDC)	MAXIMUM OUTPUT CURRENT (AMPS)
MDP400-US12-OF	OPEN FRAME	400	250	12	33.3
MDP400-US12-UC	U-CHASSIS	400	250	12	33.3
MDP400-US12-VC	TOP FAN	400	NA	12	33.3
MDP400-US12-FF	FRONT FAN	400	NA	12	33.3
MDP400-US24-OF	OPEN FRAME	400	250	24	16.7
MDP400-US24-UC	U-CHASSIS	400	250	24	16.7
MDP400-US24-VC	TOP FAN	400	NA	24	16.7
MDP400-US24-FF	FRONT FAN	400	NA	24	16.7
MDP400-US48-OF	OPEN FRAME	400	250	48	8.3
MDP400-US48-UC	U-CHASSIS	400	250	48	8.3
MDP400-US48-VC	TOP FAN	400	NA	48	8.3
MDP400-US48-FF	FRONT FAN	400	NA	48	8.3

APPLICATIONS

- 3D Dental Scanners
- Dialysis Equipment
- Ultrasound equipment
- Ventilators
- Other Electro-Medical Equipment



Approved to the 3rd edition of ANSI/AAMI ES60601-1, IEC/EN60601-1 standards for medical power supplies.
All models are RoHS-6 compliant.



MORE Efficiency. LESS Waste.

ROAL Electronics S.p.A.

Via Jesina 56/A
60022 Castelfidardo (AN) - ITALY
PH: +39 071-721461
FX: +39 071-72146539
info@roallivingenergy.com

ROAL Electronics USA, Inc.

701 Main Street, Suite 405
Stroudsburg, PA 18360
PH: +1 (570) 421-5750
FX: +1 (570) 421-5687
sales@roallivingenergy.com

ROAL
living energy

roallivingenergy.com