

Product Features:

- 75 Watt Modular Power Supply
- Universal AC Input Range (85-264 VAC)
- Optional Power Factor Correction (CCH Models)
- Low Profile for 1U High Applications
- Meets VDE/FCC Class "B" EMI
- Industry Standard 3 x 5" Footprint
- Total Power Overload Limit Protection
- Over-Current Protection
- International Safety Certifications - UL, CSA, TUV & CE Mark (LVD)

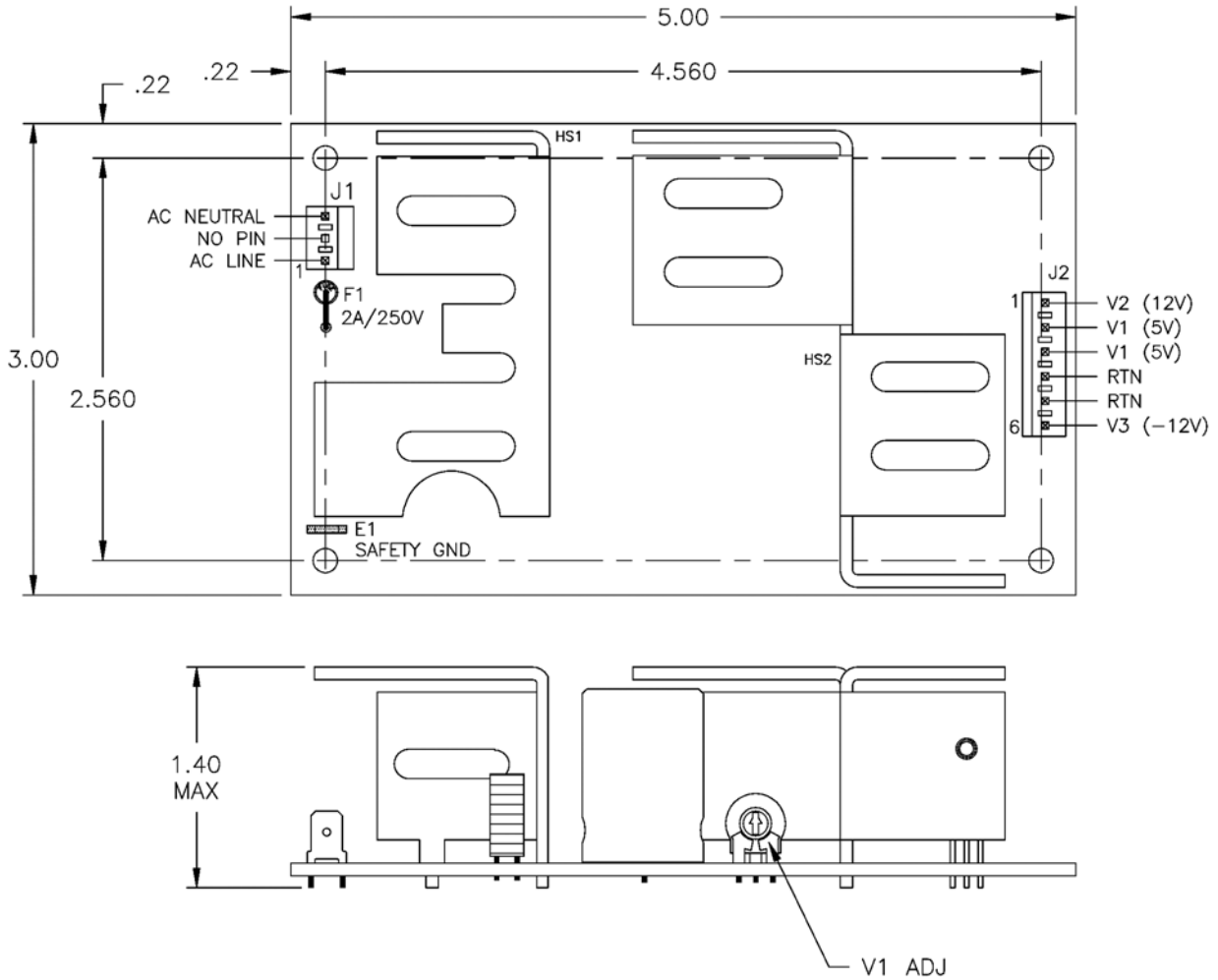


FEATURES	BENEFITS	KEY MARKET SEGMENTS & APPLICATIONS
PFC Compliant to EN61000-3-2	Supports global use of power supply	<ul style="list-style-type: none"> ■ Automation Equipment ■ Gaming Application ■ Point of Sale Equipment ■ Networking / Datacom
Input protection per EN61000-4	Designed to operate in harsh environmental conditions	<ul style="list-style-type: none"> ■ Industrial Applications ■ Computer Peripherals ■ Test Equipment
Economical	Lowered system costs	
Flexibility with options	Custom capability without NRE & long lead-times	

SPECIFICATIONS	75 Watt Switching Power Supply with 1-3 Outputs
Input Voltage Range	Universal AC Input (85-264VAC; 47-63Hz)
Harmonic Current	CCC Models Compliant to EN61000-3-2 Class A / CCH Models offer Active PFC for EN61000-3-2 Class D Compliance
Inrush Current (Cold Start)	20A @ 115VAC, 32A @ 230VAC typical
Input Current	1.25A max. at 85 VAC
Input Protection	Single fuse (2.0 or 3.5A / 250VAC / HB Type)
EMI	FCC and VDE Level "B" (Conducted)
Efficiency	70% typical @ 115 VAC (measured at full load)
Maximum Output Power	75 Watts Continuous
Total Power Over-Load Limit	Set at 90W typical by sensing the primary input current
Voltage Adjustment Range	+/-5% of V1 only, V2 / V3 is fixed
Regulation	+/-2% max of V1, V2 / V3 is +/-5% max
Output Ripple & Noise	1% pk-pk maximum @ 20MHz
Over Voltage Protection	V1 & V2 of CCx74 Models / V1 of CCx75 Models only. Trip point set at 116% - 130% of V1 or V2. To reset, cycle input power
Over Current Limit	V1 & V2 of CCx74 Models / V1 of CCx75 Models only. 110 - 135% of max lout. Output recovers when the fault is removed
Hold-Up Time	16ms min at 115 VAC / 60Hz Input and 65 Watt Output Operation
Operating Temperature	Full load from 0 to 50°C. Derates linearly from 50°C to 70°C at 2.5% per °C, 20 CFM Required for Full Power
Shock & Vibration	Per MIL STD-810E per 516.4 Part IV
Dimensions	10.00 x 5.00 x 1.95" (215.9mm x 125.7mm x 38.1mm) for standard open frame model
Safety Approvals	UL 1950, CSA 22.2 No. 950 & 234, TUV (EN60950), CE Mark & CB Report

MODEL NUMBER	V1 OUTPUT				V2 Output				V3 Output			
	Vout	Io Min	Io Max	Io Peak	Vout	Io Min	Io Max	Io Peak	Vout	Io Min	Io Max	Io Peak
CCC75F1	12	0	6.25	8	-	-	-	-	-	-	-	-
CCH74C3	+3.3	0.9	9	10	+5.1	0	2.5	3.5	5	0	1	1.5
CCHC4D3	+3.3	0.9	9	10	+5.1	0	2.5	3.5	12	0	1	1.5
CCH74D3	+3.3	0.9	9	10	+5.1	0	2.5	3.5	12	0	1	1.5
CCH74H3	+5.1	0.9	9	10	+3.3	0	2.5	3.5	12	0	1	1.5
CCH75K3	+5.1	0.9	9	10	+12	0	2.5	3.5	-12	0	1	1.5
CCH75Q3	+5.1	0.9	9	10	+15	0	2.5	3.5	-15	0	1	1.5

Specifications listed assume 25°C Ambient Operating Temperature and Full Load Operation unless otherwise specified. This product is qualified for use in OEM equipment and is not appropriate for stand-alone operation. The information contained within this specification is believed to be true and correct at the time of publication, however, Cherokee International accepts no responsibility for consequences arising from printing errors or inaccuracies. The information and specifications contained herein are subject to change without notice.

OUTLINE DRAWING


PIN ASSIGNMENTS					
CCC74 / CCH74 Models			CCC75 / CCH75 Models		
CONNECTOR	PIN	FUNCTION	CONNECTOR	PIN	FUNCTION
J2	1	+V1	J2	1	+V2
J2	2	+V1	J2	2	+V1
J2	3	+V2	J2	3	+V1
J2	4	RTN	J2	4	RTN
J2	5	RTN	J2	5	RTN
J2	6	V3	J2	6	V3
J2	7	V3 RTN	J2	7	V3 RTN
J1	1	AC NEUTRAL	J1	1	AC NEUTRAL
J1	2	NO PIN	J1	2	NO PIN
J2	3	AC LINE	J2	3	AC LINE

J1 Connector is AMP Part # 651937-1
J2 Connector is AMP Part # 640445-7

PART NUMBER DEFINITION GUIDE:				
CCx	xx	xx	x	-1A
			RoHS:	
			Blank = Non-Compliant	
			Y = 3 of 6 Compliant	
			Z = 6 of 6 Compliant	
			Output Combination (See Output Table)	
			Output Power	
			74 : 75 Watts	
			75 : 75 Watts	
			Series Name:	
			CCC : Non PFC Input Models	
			CCH : Active PFC Input Models	
Example:				
CCH75F1Y-1A: 12V Single Output with Active PFC, 5 of 6 RoHS				
CCC74D3X-1A: +3.3/+5.1/12V Triple Output (No PFC), 6 of 6 RoHS				
CCH75K3-1A: +5.1/+12/-12V Triple Output with Active PFC				