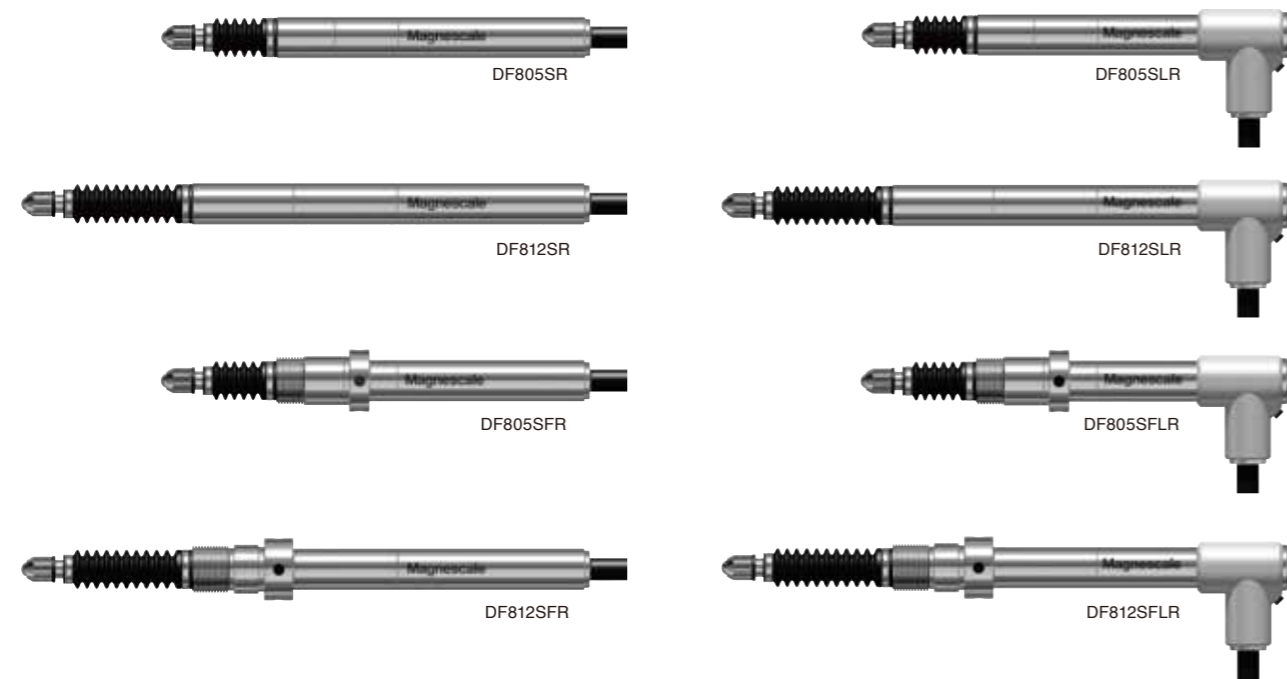


Digital Gauge
DF805S/DF812S Series

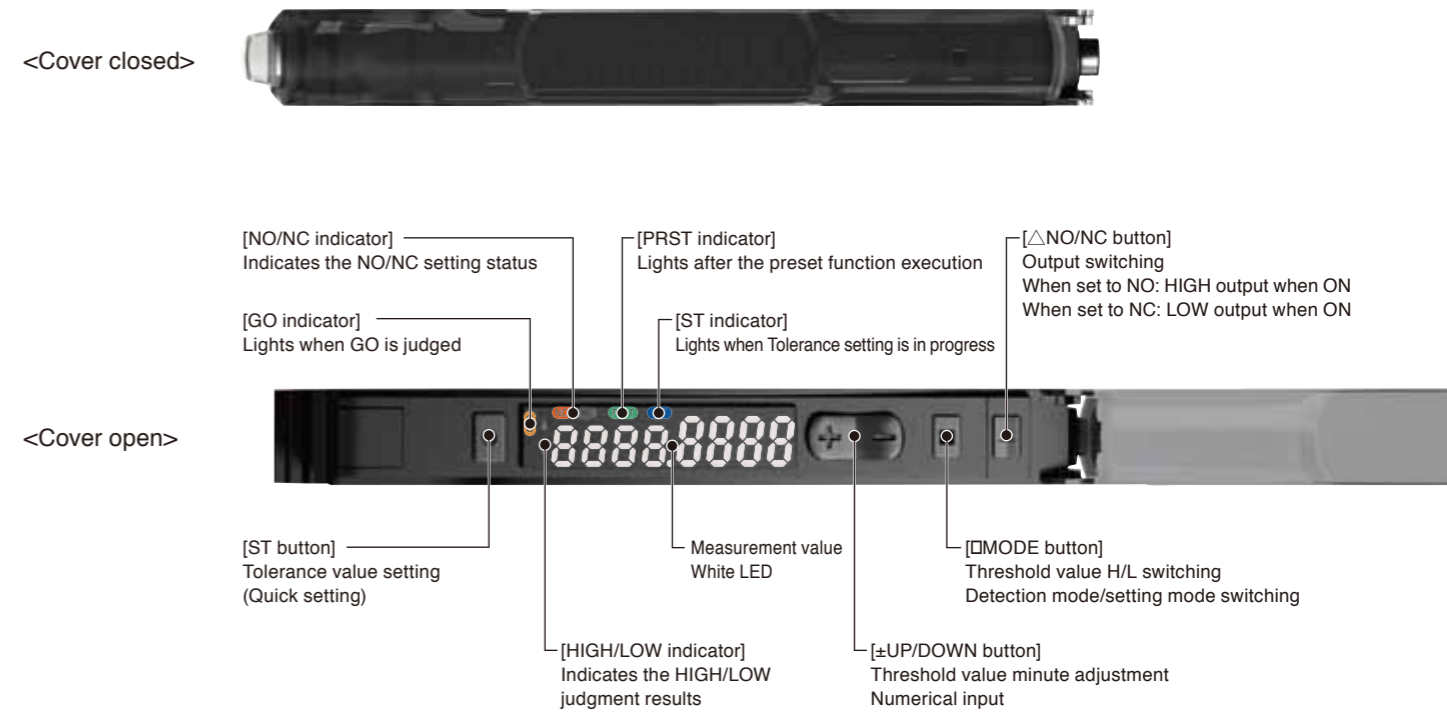


DF805S□□R
DF812S□□R

No letters: Straight
L: Right angle
F: Flange
FL: Flange & Right angle
S: Ball spline

05: measurement range 5 mm
12: measurement range 12 mm

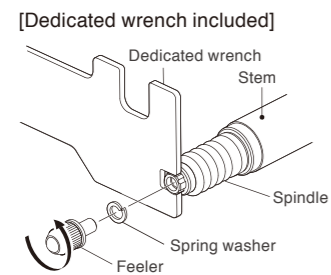
Digital Tolerance Indicator
MF10 Series



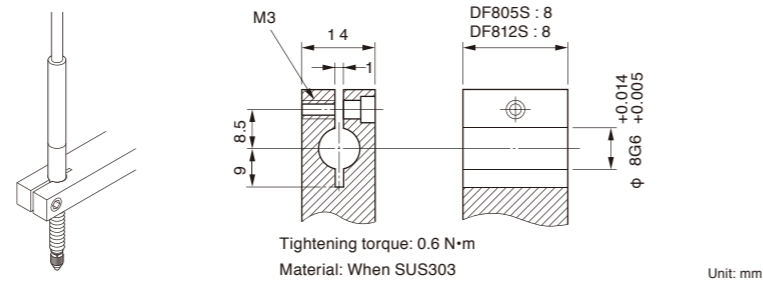
MF10-P1 Current sink (NPN)
MF10-P2 Current source (PNP)

DF800S mounting method and features <standard ø8 mounting>

Attaching/removing feeler

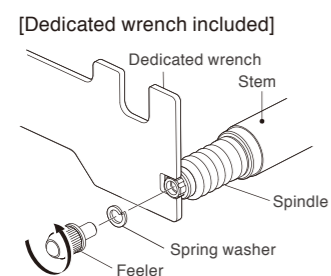


Recommended mounting holder dimensions

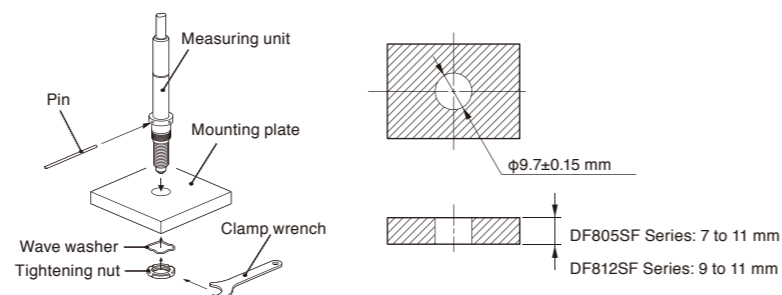


DF800SF mounting method and features <Easy mounting possible without applying excessive force to the bearing>

Attaching/removing feeler

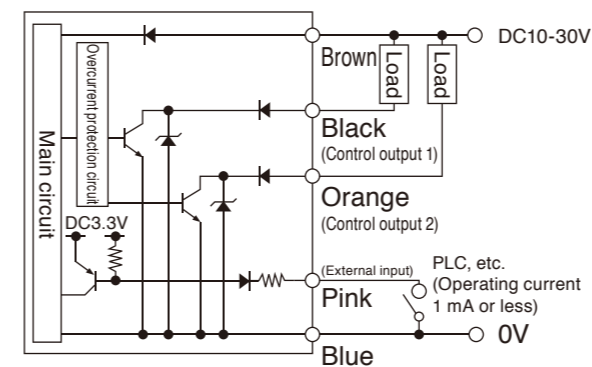


Recommended mounting holder dimensions

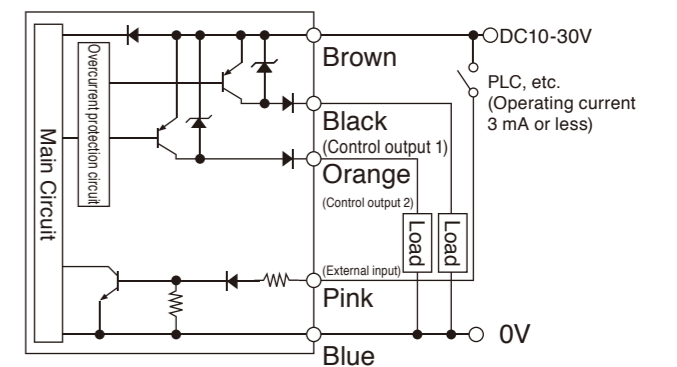


MF10 series Input/Output Circuit Diagram

MF10-P1 (NPN type)



MF10-P2 (PNP type)



■ Mounting on DIN rail

- Let the hook on the underside of the indicator catch the DIN rail track.
- Push in the unit until the hook clicks into place.

■ Removing from DIN rail

- Push the unit in the direction of arrow 1.
- Lift the unit in the direction of arrow 2 while performing step ①.

*Up to 30 digital tolerance indicators can be installed in a row.

