



Load Disc & Load Stand II

Application Data Form

Date _____ Sheet ____ of ____

Site Information

City _____ State _____ Industry _____
 Company Name _____ Division of _____
 Address _____

Contact Information

Contact Name _____ Title _____
 Tel _____ Fax _____

Originator Information

Form Completed by _____ Title _____
 Tel _____ Fax _____

Vessel(s) Information

Total Number of Vessels Contained in this ADF _____

Equipment Use

Inventory Only Inventory & Control Active Process Control

Vessel and Application Data Source

Phone Drawing(s) On-Site Visit

Is this a sanitary application? Yes No

If yes: Food Grade Pharmaceutical Grade

Is this a washdown application? Yes No

Is this a dry bulk application? Yes No

Describe the application and use of the measured levels in the vessel(s)

To be completed by Kistler-Morse			
S.O. # _____	REVIEWED BY _____	Date _____	
APPROVED BY _____		Date _____	

Vessel	ID	Material in Vessel	Tank Capacity (lbs or kgs)		Empty Tank Wt (lbs/kgs)	# of Tank Supports*	# of Process Connections	Temperature (°F/°C) of Material in Vessel		Hazardous Rating				
			Design	Working				Maximum	Minimum	Class	Div	Group	Operating Display Accuracy	Units
A														
B														
C														
D														
E														
F														
G														
H														

*Provide sketch on page 4.

Circle the appropriate vessel(s) with _____ Vessels _____

Vibrations or agitations	A	B	C	D	E	F	G	H
Corrosive materials	A	B	C	D	E	F	G	H
CIP	A	B	C	D	E	F	G	H
Horizontal or "bullet" tanks	A	B	C	D	E	F	G	H
Agitators, wipers or mixers	A	B	C	D	E	F	G	H
Jacketed or "reactor" vessels	A	B	C	D	E	F	G	H
Adjustable length legs	A	B	C	D	E	F	G	H
Thermal expansion/contraction of tank and/or its supports	A	B	C	D	E	F	G	H
External connections, platforms or other vessel attachments	A	B	C	D	E	F	G	H
Washdown	A	B	C	D	E	F	G	H
Dry Bulk	A	B	C	D	E	F	G	H

Controller

Enclosure Plastic/Fiberglass Stainless Steel
 Power 115/230VAC 100VAC DC (24V)
 Hazardous Rating at Controller Location(s) Class _____ Division _____ Group _____
 Temperature at Controller Location(s) Max _____ °F/°C Min _____ °F/°C
 Distance from Controller to the Most Distant Load Cell _____ feet/meters

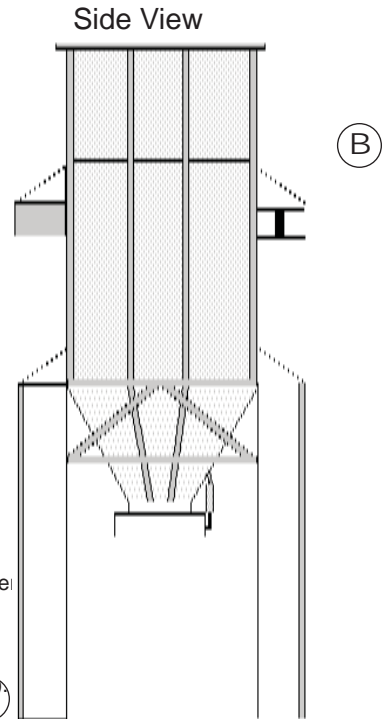
Electronics

STX Weigh II MVS-4D MVS-8D
 SVS 2000 MVS-4D with STX MVS-8D with STX
 Output Relays Required? No Yes. How many? _____
 Current Outputs Required? No Yes. How many? _____
 Serial Interface Options RS422 RS485 RS232 Compatible A-B RIO Modbus
 Other _____

Sketch Application in Detail

Illustration of typical tank

Empty vessel weight
_____ lbs/kg



Vessel supported by:
 A. Gussets on concrete floor.
 Number of gussets:

B. Gussets on H-beam.
 Number of gussets:

C. Legs on:
 Concrete floor
 Steel structure
 Other _____
 Number of legs: _____

Draw pipe, catwalk,
 conveyor and any other
 attachments.

Include separate
 drawing(s) or photo(s).

Sketch and dimension gusset
 support and bolt hole centers
 on page 4. Attach drawings,
 if applicable.

Leg shape:
 H-beam Pipe Angle
 Other _____

Sketch and dimension on page 4.

Note: If applicable,
 sketch and dimension
 foot plate on page
 4. Include bolt hole



Corporate Office
150 Venture Boulevard
Spartanburg, SC 29306 USA
Tel: 800-778-9242 • 864-574-8060
Fax: 864-574-8063

www.kistlermorse.com

KM #97-5000H