

### Certificate of Analysis

**Name:** *Borrelia burgdorferi* P35 recombinant protein, MBP-tag

**Product code:** REC31666-100

**Batch #:** R001218

**Description:** Recombinant *Borrelia burgdorferi* P35 protein (NCBI accession number NP\_045522.1) produced in *E. coli*. Protein contains a MBP-tag and is visible on SDS-PAGE at 69.5 kDa for p35-MBP (27.1 kDa for p35 and 42.4 kDa for MBP)

**Amount:** 100µg

**Protein conc.:** 1.0 mg/mL by UV absorbance at 280 nm

**Purity:** >90% pure (by SDS-PAGE)

**Presentation:** Liquid, 0.2µm filter sterilised.

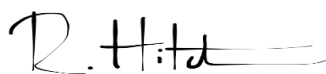
**Buffer:** 0.02 M Potassium Phosphate, 0.15 M Sodium Chloride, pH 7.2 and 0.01% (w/v) Sodium Azide

#### Usage guidelines

**Storage:** Short term: +2°C to +8°C  
Long Term: -80°C

**Stability:** At +4°C: not determined  
At -80°C: not determined

**Freezing:** Can be frozen, but avoid multiple freeze/thaw cycles



02 JANUARY 2019

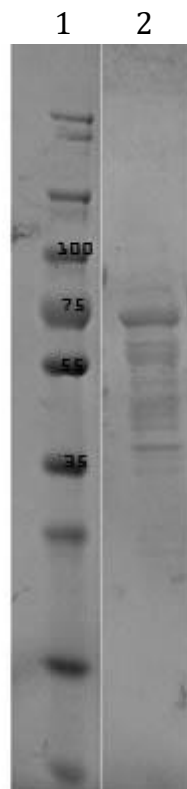
QC Officer

Date



### Certificate of Analysis

**Name:** Borrelia burgdorferi P35 recombinant protein, MBP-tag  
**Product code:** REC31666-100  
**Batch #:** R001218



SDS-PAGE of P35 Protein. Lane 1: Molecular Weight Marker. Lane 2: P35 Protein. Load: 10  $\mu$ l. Predicted/Observed size: 69.5 kDa fusion protein, 27.1 kDa for P35, 42.4 kDa for MBP alone.